

## Expertise

Protocol number: 46215954  
Order No. / Reference: 26478903-1  
Inspection date: 24 Jun 2026

Manufacturer: Audi

Model: e-tron 50 quattro

VIN: WAUZZZGE9MB031256



### Vehicle details

#### Manufacturer / Type / Model / Equipment

Audi e-tron 50 quattro

**Vehicle Identification number** WAUZZZGE9MB031256

**Mileage (Read)** 60,278 km

**First registration** 29 Mar 2021

**Number of holders** 2

**Next periodical technical inspection** 03/2026  
(Report on hand)

**Power / Engine displacement** 158 kw / 0 ccm

**Fuel type / Cylinder** Electric / 0

**Gearbox / Number of gears** Direct drive / 1

**Type of drive** All-wheel drive

**Type of vehicle** SUV

**Colour / colour code** Galaxisblau Metallic

**Doors / Seats** 5 / 5

**Upholstery type** Cloth

**Colour of upholstery** Black



## Vehicle details

<b>Maintenance booklet / proof</b>	digital evidence / incomplete	<b>Next maintenance in</b>	22,000 km
<b>Last service on / at</b>	04/2025 at 52,155 km		
<b>Key is / should be</b>	2 / 2	<b>FZG documents</b>	ZB#2 (B) was available (copy), ZB#1 (S) was not available.
		<b>Letter No.</b>	GA770503
<b>Previous damage / Accident</b>	None detectable	<b>Repainting</b>	None detectable
<b>Inspection conditions</b>	sufficient	<b>Lifting equipment / pit</b>	No
<b>Test drive</b>	Not performed	<b>Engine function test</b>	Performed
<b>Manufacturer key number/ type code number</b>	0588 / BSK 00057		
<b>Emission standard</b>	2017/1151;WLTP;reine Elektrofz	<b>fine dust sticker</b>	
<b>Permitted total weight</b>	3,040 kg	<b>Empty weight</b>	

## Tyres

### Mounted tyres

#	Tyre size	Type of tyre	Manufacturer	Tread depth
1)	255/55 R19 111H	Winter tyres on Light alloy	Continental	8mm / 8mm
2)	255/55 R19 111H	Winter tyres on Light alloy	Continental	6mm / 6mm

### Additional tyres

#	Tyre size	Type of tyre	Manufacturer	Tread depth
1)	255/55 R19 111H	Summer tyres on Light alloy	Bridgestone	5mm / 5mm
2)	255/55 R19 111H	Summer tyres on Light alloy	Bridgestone	5mm / 5mm

### Replacement

Typ	Tyre size	Type of tyre	Manufacturer	Tread depth
	Tirefit	Expiration date 05/2026		

**Legend: Tread depth information for the left tire is listed first, for the right tire it is listed second on the axle in the direction of travel.**



## Equipment

### Standard equipment

- Airbag for driver and front passenger
- Acoustic vehicle warning system
- Anti-lock braking system (ABS)
- Audi connect emergency call & service with Audi connect Remote & Control
- Audi virtual cockpit with 12.3" color display
- Exterior mirror housings painted in body color
- third brake light
- Parking aid plus with surround view
- Electronic Stability Control (ESC)
- key fob
- Removable luggage compartment cover
- Cruise control system including speed limiter
- Heated rear window
- Interior lighting
- ISOFIX child seat anchors for front passenger seat
- 2-zone automatic climate control
- Headrests (2) height adjustable
- Charging cable with household plug (mains connection cable (length 1.6 m) with household plug type E/F)
- Standard charging cable length
- e-tron compact charging system
- LED headlights with preparation for additional lighting functions
- Steering wheel: Double-spoke leather steering wheel with multifunction and paddle shifters
- Package: Gloss
- Wheel: 19" 5-arm aero alloy wheels with graphic print
- Radio: MMI Radio plus with MMI touch response
- Radio accessories: Audi sound system
- Wheel bolts with anti-theft protection and wheel loosening detection
- Rear seat backrest foldable
- Seat belts
- Front seats (standard seats)
- Sun visor with illuminated makeup mirror on driver and passenger side
- 12-volt sockets
- First aid kit with warning triangle
- Electronic immobilizer
- Central locking
- Airbag: Front side airbags and head airbag system
- All-wheel drive: Quattro
- Audi connect navigation & infotainment
- Audi pre sense basic
- Audi pre sense front
- Electrically adjustable and heated exterior mirrors
- Vehicle tool kit
- Decorative inlays: Fine lacquer graphite grey
- Door sill trims with aluminum inlay front and rear, unlit
- Chassis: adaptive air suspension
- front and rear floor mats
- Electrically opening and closing tailgate
- Transmission: 1-speed direct drive
- rear window wiper
- Interior mirror with automatic dimming, frameless
- ISOFIX child seat attachment and Top Tether for the rear seat
- CCS Type 2 charging socket
- Mode 3 charging cable (charging cable for charging at public AC charging stations (Type 2). The cable connects the charging station to the vehicle's AC charging port and enables a charging capacity of up to 22 kW (requires additional optional equipment). A current of up to 32 A can be transmitted per phase.)
- front center armrest
- On-board charger up to 11 kW (AC)
- Progressive steering
- Radio: MMI Navigation plus with MMI touch
- Radio accessories: Audi music interface
- Radio accessories: Digital radio reception (DAB)
- Tire pressure monitoring system
- Tire repair kit
- Headlight cleaning system
- Fabric seat covers with effect
- Seats: Front seats manually adjustable
- Lane Departure Warning
- Stationary air conditioning
- Separation net
- Glazing: Front window in acoustic glazing
- thermal insulation glazing



## Extra equipment

- Charging cable with industrial plug CEE 16A / 400V (mains connection cable (length 0.9 m) with industrial plug 3-phase, red, angled design)
- Front seat heating (heats seat and backrest center section, also seat side bolsters with leather upholstery and sports seats, individually adjustable in multiple stages for driver and passenger side)
- Seats: Lumbar support for the front seats, electric 4-way (horizontally and vertically adjustable)
- Stationary climate control comfort (cools or heats the interior to a desired temperature before driving, ensuring climate comfort from the moment you enter the vehicle. Additionally, seat heating and ventilation, steering wheel heating, and glass surface heating can also be activated before driving if these optional features have been selected. Programmable or activatable via MMI or smartphone app, regardless of whether the vehicle is charging at the time.)
- Surround view cameras (4 wide-angle surround view cameras cover the entire area immediately around the vehicle and enable a variety of different views for even more convenient maneuvering: continuously adjustable external view of the virtual vehicle and its surroundings via the upper touchscreen, bird's-eye view, view of the front or rear wheels, view of the front camera, panoramic view front and rear)
- Tour Assistance Package (Adaptive Driving Assistance supports the driver with acceleration, braking, maintaining speed and distance, and lane keeping. Adaptive Cruise Control including speed limiter. Efficiency Assist supports the driver in anticipatory and therefore fuel-efficient driving. Evasive Steering Assist helps the driver steer the vehicle around an obstacle in a critical situation. Turn Assist. Emergency Assist. Camera-based speed limit display/traffic sign recognition.)
- Towbar (removable and lockable; ball rod and head made of forged steel, the 13-pin socket can be swivelled invisibly behind the bumper apron, the removed towbar fits in the spare wheel well; trailer stabilization via ESC)
- Electrically adjustable, heated, and folding exterior mirrors with automatic dimming on both sides (including curb view function for the passenger-side exterior mirror with integrated LED turn signal, including heated windshield washer nozzles, convex, flat, or aspherical mirror glass. The curb view function tilts the passenger-side exterior mirror downwards when reverse gear is engaged, providing the driver with a better view of the curb).
- Lane change warning including Audi pre sense rear, exit warning and rear cross-traffic assist (Lane change warning helps the driver monitor the blind spot and traffic behind the vehicle. Exit warning warns of a possible collision when opening a door while the vehicle is stationary. Rear cross-traffic assist (Audi pre sense rear) uses data from the radar sensors).
- Manual sunshade (for the rear door windows)
- Package: Ambient lighting package plus (6 predefined color profiles, selection of 30 colors; illuminated front door pockets, color-matched; contour lighting front/rear doors, color-matched; ambient fabric lighting front/rear doors, color-matched; ambient lighting front center console, color-matched; contour lighting front center console, color-matched; contour lighting instrument panel including light graphics and illuminated e-tron badge, color-matched)
- Package: Storage and luggage compartment (2 cup holders in the rear center armrest - storage compartment in the spare wheel well - side nets in the trunk - luggage net for transporting items (luggage spider))
- Paint finish: Metallic
- Telephone: Audi smartphone interface (The Audi smartphone interface (Android Auto and Apple CarPlay) connects your smartphone to your Audi and seamlessly displays your smartphone content directly on the MMI display via USB. Navigation, telephony, music and selected third-party apps can be conveniently controlled via the MMI controller as well as via voice control of your smartphone.)
- Wheel: Winter alloy wheels, 19" 5-arm aero, with graphic print (8 J x 19, 255/55 R19 tires suitable for snow chains)

## Brief expert findings

Documents submitted	At the time of the inspection, the vehicle registration certificate Part 2 (title) was available, but the vehicle registration certificate Part 1 (document) was not. (Copy)
VIN comparison	The vehicle identification number (VIN) was read from the vehicle and its conformity with the submitted documents was confirmed by the undersigned during the inspection.
Inspection	The inspection conditions were sufficient for the assessment of the vehicle. No lifting equipment or pit was available for inspecting the vehicle. Therefore, inspection of the vehicle's underside was only possible to a limited extent.
Test drive	No test drive/shunting maneuver was carried out during the inspection of the vehicle.
Engine function test	An engine test run was performed.



## Value reducing factors

No.	Component group	Description
1	Misc.	Inspection / maintenance - No evidence - No deduction
2	Equipment	Tirefit filler - Expired - Replace
3	Misc.	Main inspection - Expired - Replace
4	2nd wheel set	1 alloy rim - Scratch(es) - Loss in value
5	Wing mirror - left side	Mirror bracket (Verätzung) - Paint defect - Replace

## Order/Scope of Order

An order was placed to prepare a sales report for the described vehicle. This report includes the following:

- Description of key vehicle information
- Documentation of equipment features  
*(Delivery by third-party service providers)*
- Documentation of damage, defects, missing parts
- Documentation of prior damage, unrepaired prior damage, repainting
- A brief visual or functional inspection of the equipment details, if possible.  
*(Functional testing of driver assistance systems is not included in the scope of services!)*
- a photographic documentation of the vehicle

## Basis for the order

This product is based on the guidelines for vehicle returns and valuations published by Alphabet Fleet GmbH. The expert makes the specific findings in each individual case objectively, within the framework of the prescribed standards, based on their own expertise.

The vehicle inspection takes place in a fully assembled, unassembled state.

Damage or defects that can only be detected during disassembly/diagnostic work or through further investigation remain within the realm of prognostic risk. An increased risk exists due to concealed defects caused by fraudulent misrepresentation and which were not identifiable by the expert.

Damage or defects resulting from normal use or wear and tear of the vehicle will be accepted in accordance with the applicable standard.

There was no explicit identification or monetary consideration of the expected features within the product.

Features which, in their nature and extent, slightly exceed normal use but do not constitute unacceptable damage, will be documented and indicated as signs of wear, if applicable.

Damage or defects that, according to the applicable standard, can no longer be attributed to normal use or wear and tear are listed under "Value Reducing Factors" in the product description.

Depending on the product specification, a monetary ID can be provided. If this takes place, the costs can be 100% d or pro rata depending on the vehicle's age and mileage.

## Previous damages

No apparent prior damage that had been repaired could be found on the vehicle.

## Comments

- Die Unterbodenbesichtigung war nur ebenerdig & eingeschränkt möglich. Mehrkosten möglich.



Figure 1: Diagonal front (left)



Figure 2: Diagonal front (right)



Figure 3: Diagonal rear (left)



Figure 4: Diagonal rear (right)

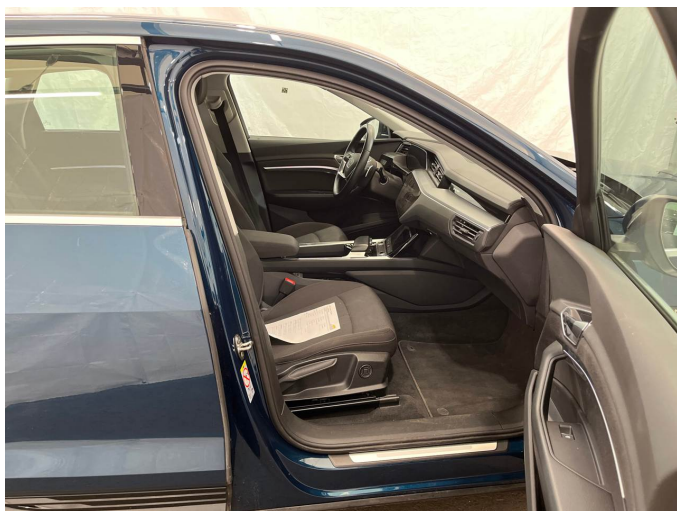


Figure 5: Interior - front



Figure 6: Interior - rear



Figure 7: Instrument cluster



Figure 8: Instrument panel



Figure 9: Interior 360° view



Figure 10: Cargo area

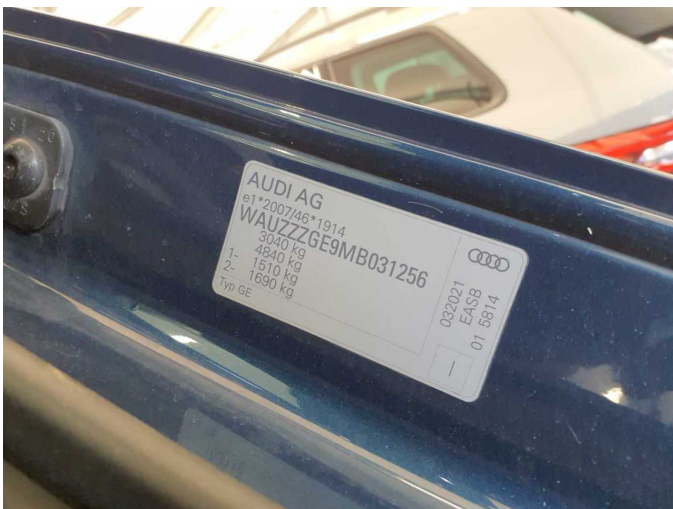


Figure 11: VIN



Figure 12: Mounted tyres



Figure 13: Documents

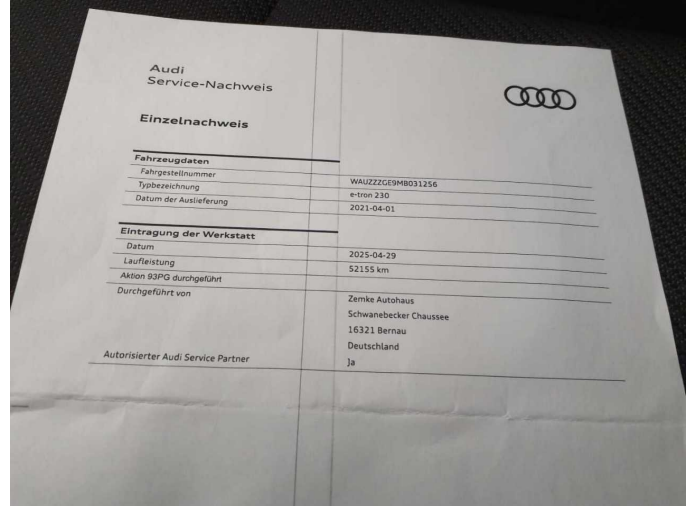


Figure 14: Documents



Figure 15: Documents



Figure 16: Documents



Figure 17: Additional tyres

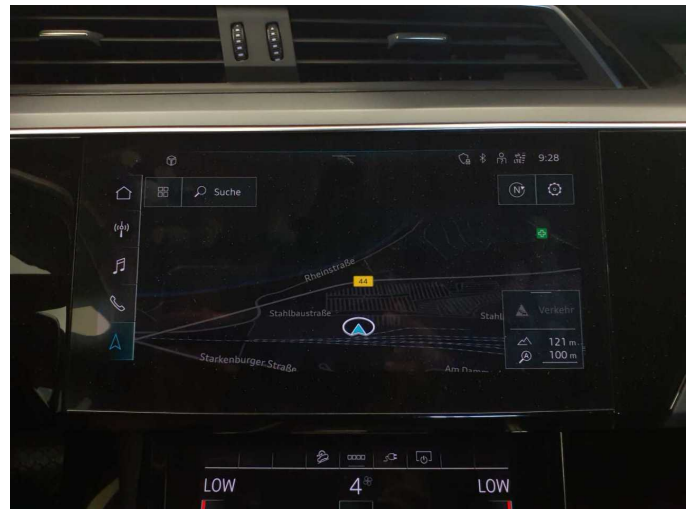


Figure 18: Navigation



Figure 19: Misc.



Figure 20: Misc.

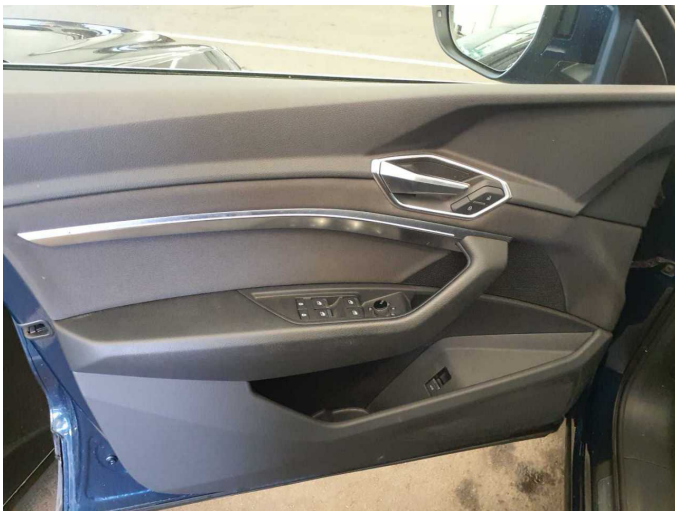


Figure 21: Misc.



Figure 22: Misc.



Figure 23: Misc.



Figure 24: Misc.



Figure 25: Misc.



Figure 26: Misc.



Figure 27: Misc.



Figure 28: Misc.



Figure 29: Misc.



Figure 30: Misc.



Figure 31: Misc.



Figure 32: Misc.



Figure 33: Misc.



Figure 34: Misc.



Figure 35: Misc.



Figure 36: Misc.



Figure 37: Misc.



Damage 2: Equipment: Tirefit filler - Expired - Replace



Damage 3: Misc.: Main inspection - Expired - Replace



Damage 4: 2nd wheel set: 1 alloy rim - Scratch(es) - Loss in value



Damage 4: 2nd wheel set: 1 alloy rim - Scratch(es) - Loss in value



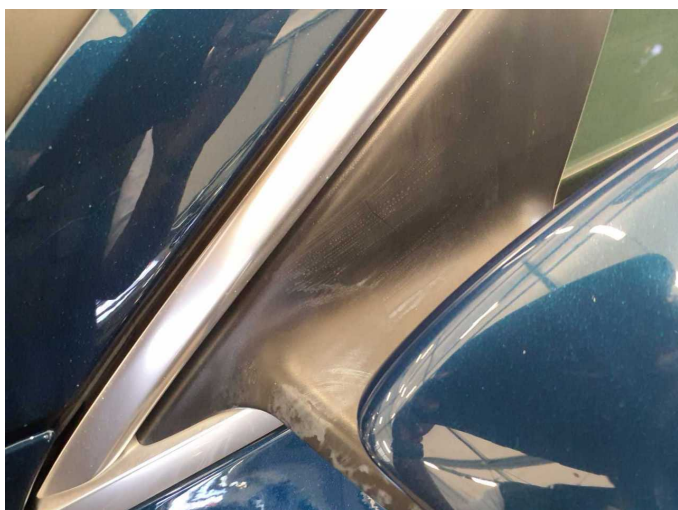
Damage 5: Wing mirror - left side: Mirror bracket (Verätzung) - Paint defect - Replace



**Damage 5:** Wing mirror - left side: Mirror bracket (Verätzung) - Paint defect - Replace



**Damage 5:** Wing mirror - left side: Mirror bracket (Verätzung) - Paint defect - Replace



**Damage 5:** Wing mirror - left side: Mirror bracket (Verätzung) - Paint defect - Replace