

## Expertise

Protocol number: 46042592  
Order No. / Reference: 26501470  
Inspection date: 17 Jun 2026

Manufacturer: Audi

Model: Q5 40 TDI quattro S tronic S line

VIN: WAUZZZFY3N2050883



### Vehicle details

#### Manufacturer / Type / Model / Equipment

Audi Q5 40 TDI quattro S tronic S line

**Vehicle Identification number** WAUZZZFY3N2050883

**Mileage (Read)** 123,683 km

**First registration** 11 May 2022

**Number of holders** 1

**Power / Engine displacement** 150 kw / 1,968 ccm

**Fuel type / Cylinder** Hybrid Diesel / E / 4

**Gearbox / Number of gears** Automatic / 7

**Type of drive** All-wheel drive

**Type of vehicle** SUV

**Colour / colour code** Mythossschwarz Metallic (Y9T)

**Doors / Seats** 5 / 5

**Upholstery type** Leather

**Colour of upholstery** Grey-Black



## Vehicle details

<b>Maintenance booklet / proof</b>	Non-existent	<b>Next maintenance in</b>	2 Tag(e)
<b>Last service on / at</b>	12/2025 at 115,430		
<b>Key is / should be</b>	2 / 2	<b>FZG documents</b>	ZB#2 (B) was available (copy), ZB#1 (S) was not available.
		<b>Letter No.</b>	GJ042827
<b>Previous damage / Accident</b>	Detectable	<b>Repainting</b>	None detectable
<b>Inspection conditions</b>	sufficient	<b>Lifting equipment / pit</b>	No
<b>Test drive</b>	Not performed	<b>Engine function test</b>	Performed
<b>Manufacturer key number/ type code number</b>	0588 / BQW 00319		
<b>Emission standard</b>	EURO6;WLTP;AP;PI/CI; M, N1 I	<b>fine dust sticker</b>	
<b>Permitted total weight</b>	2,510 kg	<b>Empty weight</b>	

## Tyres

### Mounted tyres

#	Tyre size	Type of tyre	Manufacturer	Tread depth
1)	255/40 R21 102Y	Summer tyres on Light alloy	Continental	5mm / 5mm
2)	255/40 R21 102Y	Summer tyres on Light alloy	Continental	6mm / 6mm

### Additional tyres

#	Tyre size	Type of tyre	Manufacturer	Tread depth
1)	235/65 R17 104H	Winter tyres on Light alloy	Pirelli	3mm / 3mm
2)	235/65 R17 104H	Winter tyres on Light alloy	Pirelli	3mm / 3mm

### Replacement

Typ	Tyre size	Type of tyre	Manufacturer	Tread depth
	Tirefit	Expiration date 10/2026		

**Legend: Tread depth information for the left tire is listed first, for the right tire it is listed second on the axle in the direction of travel.**

TÜV SÜD Auto Partner GmbH  
Gutenbergstraße 13  
70771 Leinfelden-Echterdingen

Inspection location  
Hartmann Fleet Professionals GmbH  
Leerenstraße 25  
29683 Bad Fallingbommel



## Equipment



## Standard equipment

- AdBlue tank (12 liters) (tank for AdBlue solution for reducing nitrogen oxides in the exhaust gas using an SCR system)
- Accent surfaces in matte black (for air vents and center console insert)
- "quattro" all-wheel drive with ultra technology (permanently available all-wheel drive with actively controlled torque distribution, ultra technology and wheel-selective torque control. The system includes an electronically controlled all-wheel drive coupling, a friction clutch integrated into the rear axle differential and an electronic differential lock (EDS) for all driven wheels. The ultra technology allows for a reduction in drag losses in the all-wheel drive system by opening both couplings.)
- Audi drive select (adjustment of vehicle characteristics in the available modes auto, comfort, dynamic, efficiency, allroad, offroad, individual by adjusting steering assistance, engine characteristics or shift characteristics, dynamic all-wheel steering, damper control, adaptive air suspension, sport differential, ultra technology, adaptive speed assistant, Matrix LED headlights and setting of other optional equipment.)
- Audi virtual cockpit plus (fully digital 12.3-inch instrument cluster in full HD with additional graphic display options: Classic, Sport, Dynamic design - Display of the respective information: speed, engine speed, map display, Audi connect services, radio media information, etc. - Configuration of on-board computer values in the tachometer - Break recommendation - Operation via the multifunction steering wheel - Display of the navigation map as a 3D terrain model - Permanent display of navigation information)
- Exterior mirror housings in body color
- Hill Descent Assist (enables controlled descent on steep slopes up to 30 km/h)
- Third brake light (in LED technology)
- Headliner in fabric (in titanium grey or atlas beige, color-matched to the respective interior color)
- Decorative inserts in micrometallic silver (for dashboard, door panels and center console)
- Parking aid plus (supports the driver with acoustic signals and a display message when parking and maneuvering. The parking aid is activated by engaging reverse gear or via a button in the center console, or automatically when the distance to a detected object is less than 90 cm. Automatic activation can be switched on and off.)
- Electronic Differential Lock (EDS)
- Sport suspension (The sport suspension offers more direct road contact and sportier handling thanks to its firmer spring and damping setup. The front axle is a lightweight 5-link axle with shock absorbers, coil springs, stabilizer bar, and a rigidly bolted axle carrier. The rear axle uses a lightweight 5-link axle with independent suspension, shock absorbers, coil springs, stabilizer bar, and an elastically mounted axle carrier.)
- Airbag for driver and front passenger (with front passenger airbag deactivation)
- Airbag: Front side airbags and head airbag system (front side airbags integrated into the seatbacks. With head airbag system: deploys in front of the side window area and thus protects front and outer rear passengers in the event of a side impact.)
- Anti-lock braking system (ABS) (with electronic brake force distribution (EBD))
- Traction control (ASR)
- Audi connect Emergency Call & Service with Audi connect Remote & Control (The Audi connect Emergency Call & Service services ensure a safe feeling on every journey. For example, in the event of a serious accident, an automatic emergency call is triggered to the Audi emergency call center. - Emergency Call & Service: Emergency call, online breakdown call, Audi damage service, Audi service appointment online - Remote & Control: Parking position, vehicle status, remote control, locking/unlocking, remote control of auxiliary heating, push notification, anti-theft alarm system)
- Audi pre sense city (Within system limits, an impending collision with vehicles and pedestrians can be detected at speeds up to approximately 85 km/h. In this case, the system warns the driver visually, audibly, and, if necessary, with a braking jolt. It can initiate full deceleration if required to reduce the collision speed or, if possible, avoid the collision altogether.)
- Electrically adjustable, heated and folding exterior mirrors, automatically dimming on both sides (including curb view function for the passenger side - with integrated LED turn signal - aspherical mirror glass on the left, convex on the right - including heated windshield washer nozzles - the curb view function tilts the passenger exterior mirror downwards when reverse gear is engaged, giving the driver a better view of the curb).
- Roof edge spoiler
- Black roof rails with roof rack recognition
- Diesel particulate filter (DPF)
- Tachometer
- Door sill trims with aluminum inlay at the front, illuminated, with S lettering
- Electromechanical parking brake (includes parking brake function when stationary, starting aid by automatic release when starting and full deceleration while driving via all 4 wheels)
- Electronic Stability Control (ESC)
- Electric windows front and rear
- Front and rear floor mats (made of velour in black)
- Electrically operated tailgate (The tailgate can be opened electrically by pressing the button on the vehicle key, in the driver's door, or the soft-touch button on the tailgate handle. Closing the tailgate is just as easy and convenient: simply press the button on the inside of the tailgate, the button in the driver's door, or the button on the vehicle key. A soft-close mechanism makes manual closing easier when necessary.)



- Cruise control system including speed limiter (maintains the desired speed from approximately 20 km/h, provided the engine power or engine braking effect allows it; adjustable speed limiter allows individual limitation of the maximum speed, e.g. within built-up areas)
- Interior lighting (roof module including reading lights for driver and front passenger - capacitively operated - reading lights in the rear - ambient light on the center console - illuminated vanity mirrors in the front - glove compartment light - passive door warning lights - trunk light left and right - approach lighting on the right side of the tailgate)
- Manual child lock
- ISOFIX and Top Tether child seat attachment for the outer rear seats (holding device for the practical attachment of ISOFIX child seats with an additional upper attachment point (Top Tether) on the outer rear seats)
- boot floor mat
- Comfort key (without Safelock) (provides access and engine start authorization without actively using the vehicle key. With the electronic access and immobilizer system, you can open your vehicle at the doors and tailgate via wireless communication between the key and the vehicle, and lock it using the sensors on the door handles. The comfort key must be carried in the vehicle for this to work. The engine is started and stopped using the engine start/stop button.)
- Steering wheel: Leather steering wheel in 3-spoke design with multifunction plus (with 14 multifunction buttons for convenient operation of the available infotainment features such as audio skip, telephony, NAV button or the freely programmable button - adjustable in height and distance - with full-size airbag - shift paddles for manual changing of the driving modes)
- Light/rain sensor (for controlling the automatic headlight switching, the windshield wipers and the coming home/leaving home function)
- front center armrest
- Model designation according to new performance labeling
- Navigation: MMI Navigation plus with MMI touch (Navigation system on the high-resolution 10.1-inch color display, 7-inch driver information system, map updates, 3D city display, highly detailed 3D city models, personal route assistance, online traffic information plus, MMI search, MMI touch, infotainment operation via natural language interaction, detailed route information. Includes Audi connect Nav & Infotainment, use of navigation data for predictive and efficient driving, country information. Input of up to 10 waypoints)
- Wheel: Tire repair kit (with 12-volt compressor and tire sealant in the luggage compartment, maximum permissible speed 80 km/h)
- Radio accessories: Data module Europe
- Reversing camera (Within the system's limits, the reversing camera captures the area behind the vehicle and displays it on the MMI screen using dynamic display elements. The system allows a choice between perpendicular parking mode and trailer mode (in conjunction with a factory-installed trailer hitch). Depending on the selected mode, the calculated driving lane or a guide line for coupling a trailer is displayed. The reversing camera is discreetly integrated into the tailgate handle.)
- Transmission: S tronic 7-speed
- Heated rear window
- rear window wiper
- Interior mirror, automatically dimming, frameless
- Camera-based traffic sign recognition (Supports the driver by displaying traffic signs detected within the system's limits, such as speed limits, no-overtaking zones, and temporary speed restrictions, which are within the detection range of the front camera. The traffic sign recognition is displayed automatically in the digital instrument cluster or in the optional Audi virtual cockpit.)
- Automatic climate control (1-zone - electronically regulates air temperature, volume and distribution, sun position-dependent control - air distribution can be set using 5 main positions - 3 LEDs integrated into the seat heating/ventilation buttons provide feedback on the selected setting (optional) - buttons for defrosting the front and rear windows - manual recirculation control - with key recognition and humidity sensor - dust and odor-removing cabin air filter)
- Rear headrests (3)
- Front headrests
- Stainless steel loading sill protector
- LED headlights: Matrix LED headlights with dynamic light display and dynamic turn signals (multifunction camera - headlight cleaning system). Front and rear LED headlights with the following functionalities: - visually enhanced daytime running lights - low beam - high beam - position lights - turn signals - cornering lights - all-weather lights - maneuvering lights - motorway lights - automatic dynamic headlight range control - static cornering lights - dynamic light display for coming home/leaving home functions.
- Mild hybrid (Mild hybrid features an enhanced start-stop function, extended energy recuperation during braking to charge the starter battery, and additional lithium-ion storage. This allows the system to recover more energy and switch off the engine more frequently. A supplementary belt-driven starter generator (BSG) is conceptually included for mild hybrid systems. Purely electric driving is not possible.)
- Non-smoking version (one 12-volt socket each at the front and rear - storage compartment at the front)
- Wheel: On-board tools (excluding jack)
- Wheel: Alloy wheels, 18" 5-arm star (8.0 J x 18, tire 235/60 R 18)
- Wheel: Tire pressure monitoring system (visual and audible warning in case of pressure loss in one or more wheels - display in the driver information system)
- Radio: MMI Radio plus with MMI touch (10.1" color display (1,540 × 720) including MMI touch operation - Driver information system with 7" color display - Audi music interface with 1 USB-A, 1 USB-C port, each with data and charging function - Bluetooth interface (hands-free calling and audio streaming) - 8 passive speakers, 4 front, 4 rear - DAB+ - AM/FM phase diversity - speed-dependent volume adjustment - voice control system with natural language for controlling infotainment and vehicle functions - WLAN hardware - teaser phases)



- Seat belts (with height adjustment and seat belt reminder for all seats. Acoustic and visual warning signals remind the front seat belts to fasten. A visual warning signal alerts the rear seat belts to unfastening.)
- Seats: Standard front seats
- Seats: Rear seat backrest, split and foldable (split, in a 40:20:40 ratio or fully foldable, with center armrest - including four lashing eyes in the luggage compartment, for securing luggage and objects, attachment points for the luggage compartment net)
- Front sun visor
- Lane Departure Warning (within system limits, helps prevent unintentional lane departures. If the system is activated and ready, and the driver has not used the turn signal, the Lane Departure Warning helps prevent crossing detected lane markings by making corrective steering interventions. Additional steering wheel vibration can be set at the driver's request. Operating range from approximately 60 to a maximum of 250 km/h)
- Telephone: Bluetooth interface (The smartphone can be connected to the vehicle via Bluetooth to play music through the vehicle or to make phone calls. Depending on the smartphone model, emails and SMS messages can also be displayed in the MMI via Bluetooth.)
- First aid kit with warning triangle (warning triangle in the trunk - first aid kit in the trunk - 2 high-visibility vests in the door pockets)
- Glazing: Clear glass
- Glazing: Side and rear windows in heat-insulating glass (for rear window, door and side windows - green tinted - rear window heated, with timer)
- Heat-insulating glazing (green tinted - for rear window, door and side windows - rear window heated, with timer)
- Electromechanical power steering (maintenance-free rack and pinion steering with speed-dependent steering assistance; precise steering feel at high speeds, excellent support when parking.)
- Seat covers in fabric (synonym: seat center panel in black fabric - seat side bolsters, headrests, front center armrest and door panel inserts in solid black fabric)
- Seats: Front seats manually adjustable (with manual adjustment of seat height, seat longitudinal position, backrest angle, headrest and seat belt height)
- Front seat heating (for driver and front passenger side, individually adjustable in 3 stages via direct selection button on the climate control unit)
- Start-stop system
- Telephone: Audi Phone Box (features as Audi phone box light; additional functions: The Audi phone box includes: - Bluetooth interface - Hands-free system - Coupling antenna for connecting the mobile phone to the external antenna for improved reception quality and reduced mobile phone radiation in the vehicle interior - LTE support - Charging option via USB port or wireless charging (Qi standard) - Forgetfulness warning - Charging status display in the MMI touch display)
- Partition net (to be attached to the body or to the folded-down rear seat backrest, helpful whether the rear seat backrest is upright, folded down on one side, or folded down completely; removable)
- Glazing: Windscreen in heat-insulating and acoustic glazing (windscreen in heat-insulating glazing, green tinted - improved external noise insulation)
- Electronic immobilizer (integrated into the engine control unit, automatic activation via vehicle key)
- Central locking with remote control
- black decorative trim



## Extra equipment

- 3-zone automatic climate control (climate control unit with large TFT display and capacitive rocker switches - electronically regulates the air temperature and distribution individually for driver and front passenger - additional climate control unit for setting the rear passenger compartment temperature in the rear center console - automatic recirculation control - dust and odor-removing cabin air filter - residual heat utilization - buttons for defrosting the front and rear windows - with key recognition and humidity sensor)
- Accent areas in glossy black
- Ambient Lighting Package Plus (in addition to the standard interior lighting (LED): - Approach lighting in the exterior door handles - Entry lights on the underside of the front and rear doors (white) - Footwell lighting front and rear (white) - Interior door handles front and rear (white) - Ambient lighting in the front and rear doors, multi-colored - Illuminated storage compartment below the instrument panel - Ambient lighting on the front center console, multi-colored - Illuminated decorative inserts in the instrument panel and doors, multi-colored)
- Application Store and Smartphone Interface (The Audi Application Store in the vehicle's MMI provides access to a wide selection of popular apps, for example from the categories of news and podcasts, sports and games, or video and entertainment. These can be downloaded directly to the vehicle and can be used within the framework of legal regulations.)
- Black fabric headliner
- Deletion of model designation and performance/technology lettering
- Glazing: Acoustic glazing for front door windows (Front door windows with acoustic glazing provide improved external noise insulation.)
- Glazing: Sun protection glazing, tinted
- Headlight cleaning system
- Headrests: variable headrests for front seats
- Phone: Smartphone interface
- Radio accessories: Audi sound system (10 speakers including center speaker and subwoofer - 6-channel amplifier - total output of 180 watts)
- S line interior package (sports seats in front - black cloth/leather combination with S embossing on the seatbacks - 3-spoke leather steering wheel with multifunction plus in black (perforated leather steering wheel grips) with S emblem; with contrast stitching, color-coordinated with the respective interior color; with shift paddles - matte brushed aluminum trim - glossy black accents - illuminated front door sills with aluminum inserts - stainless steel pedals and footrest (not for plug-in hybrids) - front and rear floor mats - black cloth headliner)
- Seat covers in fine nappa leather with S embossing (seat center panel, seat side bolsters, headrest center panel and center armrest in fine nappa leather - diamond quilting - S embossing in the backrests of the front seats)
- Assistance Package Tour (adaptive speed assistant (0-250 km/h) - traffic jam assistant - Audi active lane assist (above 65 km/h) - predictive efficiency assistant - left turn assistant - evasive steering assistant - high beam assistant)
- Audi exclusive piano black decorative inlays (for dashboard, door panels and center console)
- Black Optics Package Plus (Black Optics Package (black accents in the area of the Audi Singleframe grille, the trim strips on the side windows and the front and rear bumpers, exterior mirror housings in black (optionally available), roof rails in black), Audi rings front and rear and model designation on the rear in black. On the S model, the model designation in the radiator grille and the tailpipe design are also finished in black)
- Comfort center armrest at the front (adjustable in tilt and longitudinally sliding or completely foldable)
- Front sun visor, sliding
- Interior elements in synthetic leather (lower center console and armrest in the doors in synthetic leather)
- Lane change warning including Audi pre sense rear (lane change assistant, supports the driver within system limits when changing lanes (functional range from approx. 15 to a maximum of 250 km/h) by displaying the information in the respective exterior mirror. Audi pre sense rear uses additional radar sensors to detect potential rear-end collisions within system limits. In combination with the optional parking aid plus or parking assistant, exit warning and rear cross-traffic assist are also included).
- LED headlights: Matrix LED headlights, OLED taillights with specific taillight signature 1 (with dynamic light staging Coming/Leaving Home and dynamic turn signals - multifunction camera - headlight cleaning system - OLED taillights). LED headlights front and rear with the following functionalities: - visually enhanced daytime running lights - low beam - high beam - position lights - turn signals - cornering lights - all-weather lights - maneuvering lights - motorway lights - automatic dynamic headlight range control - static cornering lights)
- Paint finish: Metallic
- Parking assistant with parking aid plus (The parking assistant supports parking maneuvers by making suitable steering corrections. Ultrasonic sensors search for suitable parallel and perpendicular parking spaces. For perpendicular parking spaces (forwards and backwards), the ideal parking path is calculated; for parallel parking spaces, the ideal entry and exit paths are calculated. The system takes over the steering. The driver only needs to follow the instructions on the display to change gears, accelerate, brake, and monitor the parking process.)
- Seats: Front seats electrically adjustable
- Seats: Lumbar support for the front seats, electric (4-way) (horizontally and vertically adjustable)



- Seats: Pneumatically adjustable lumbar support with massage function (The lumbar support provides support in the lumbar region through targeted inflation and deflation of three lordosis bladders and is adjustable via lumbar support buttons on the seat. The massage function, with three different programs (wave, stretch, kneading) and three intensity levels, can be switched on and off via the lumbar support buttons with integrated direct massage buttons. Programs and intensity levels can be adjusted via the MMI. Massage duration approximately 10 minutes.)
- Steering wheel: Leather steering wheel in 3-spoke design with multifunction plus including steering wheel heating (with 14 multifunction buttons for convenient operation of the available infotainment features such as audio skip, telephony, NAV button or steering wheel heating - adjustable in height and distance - with full-size airbag - shift paddles for manual changing of the driving modes)
- sunshade roller blind, manual
- Wheel: Light alloy wheels, 21" 5-V-spoke offset, anthracite black, gloss turned (8.5 J x 21, tires 255/40 R 21. An offer from Audi Sport GmbH)
- Seats: Rear bench seat plus (including longitudinal adjustment and backrest tilt - fold-out center armrest with 2 cup holders - rear seat backrest split 40:20:40 or fully foldable - including load-through facility - remote backrest release in the luggage compartment for the two outer backrest sections (no separate remote release for the smaller center section) - rear L-shaped headrests, manually adjustable)
- Storage and luggage compartment package (flexible transport of items and comfort while traveling; consisting of: - storage net on the back of the front seatbacks - cup holder in the rear center armrest - storage compartment on the driver's side - lockable glove compartment in the luggage compartment: - luggage compartment net - net in the recess on the left - tension strap on the trunk side (not available for SQ5 Sportback))
- Towbar (ball head mechanically swiveling with electric release - ball rod and head made of forged steel - operation via push button in the luggage compartment - trailer stabilization via the electronic stability control (ESC) The integrated swiveling system socket allows continuous operation of electrical devices in the trailer or caravan while driving and can be swivelled invisibly behind the bumper apron when not in use)

### Brief expert findings

Documents submitted	At the time of the inspection, the vehicle registration certificate Part 2 (title) was available, but the vehicle registration certificate Part 1 (document) was not. (Copy)
VIN comparison	The vehicle identification number (VIN) was read from the vehicle and its conformity with the submitted documents was confirmed by the undersigned during the inspection.
Inspection	The inspection conditions were sufficient for the assessment of the vehicle. No lifting equipment or pit was available for inspecting the vehicle. Therefore, inspection of the vehicle's underside was only possible to a limited extent.
Test drive	No test drive/shunting maneuver was carried out during the inspection of the vehicle.
Engine function test	An engine test run was performed.

### Value reducing factors

No.	Component group	Description
1	Door - rear left side	Door handle - outside - Scratch(es) - Smart repair
2	Door - rear right side	Door edge - Scratch(es) - Smart repair
3	Bonnet	Bonnet - dent(s) - Smooth repair work
4	Body	C-pillar - right side - Dent / paintcoat damage - Smart repair
5	Side panel - rear left side	Wheel well extension - Scratch(es) - Smart repair
6	Mudguard - left side	Wheel well extension - Scratch(es) - Smart repair
7	Front bumper	Front bumper - Scratch(es) - Smart repair
8	Rear bumper	Rear bumper - Scratch(es) - Smart repair
9	Wheel / tyres	Tyre - front right side - Damaged - Replace
10	Wheel / tyres	Alloy rim - rear right side - Scratch(es) - Replace
11	Wheel / tyres	Alloy rim - front right side - Scratch(es) - Replace



## Wear and tear

No.	Component group	Description
1	Vehicle glazing	Windscreen - Stone chips - No deduction
2	2nd wheel set	Tyres - complete set (Kein Teil der Ausstattung) - does not comply with manufacturer's specifications - No deduction
3	Door - rear right side	Door - dent(s) - No deduction

The vehicle shows signs of wear and tear commensurate with its age and use.

## Missing parts

### Description

Documents - Log book

## Previous damages

No.	Previous damage	Extent of damage (Net)
1	Side - left, Provided by user / customer, from 11 Aug 2025	1.112,50 €
2	Rear, Provided by user / customer, from 30 Apr 2024	2.179,12 €
3	Rear, Side right, Provided by user / customer, from 22 Sept 2022	2.992,42 €

## Order/Scope of Order

An order was placed to prepare a sales report for the described vehicle. This report includes the following:

- Description of key vehicle information
- Documentation of equipment features  
(*Delivery by third-party service providers*)
- Documentation of damage, defects, missing parts
- Documentation of prior damage, unrepaired prior damage, repainting
- A brief visual or functional inspection of the equipment details, if possible.  
(*Functional testing of driver assistance systems is not included in the scope of services!*)
- a photographic documentation of the vehicle

## Basis for the order

This product is based on the guidelines for vehicle returns and valuations published by Alphabet Fleet GmbH. The expert makes the specific findings in each individual case objectively, within the framework of the prescribed standards, based on their own expertise.

The vehicle inspection takes place in a fully assembled, unassembled state.

Damage or defects that can only be detected during disassembly/diagnostic work or through further investigation remain within the realm of prognostic risk. An increased risk exists due to concealed defects caused by fraudulent misrepresentation and which were not identifiable by the expert.

Damage or defects resulting from normal use or wear and tear of the vehicle will be accepted in accordance with the applicable standard.

There was no explicit identification or monetary consideration of the expected features within the product.

Features which, in their nature and extent, slightly exceed normal use but do not constitute unacceptable damage, will be documented and indicated as signs of wear, if applicable.

Damage or defects that, according to the applicable standard, can no longer be attributed to normal use or wear and tear are listed under "Value Reducing Factors" in the product description.

Depending on the product specification, a monetary ID can be provided. If this takes place, the costs can be 100% d or pro rata depending on the vehicle's age and mileage.



## Previous damages

According to available information previous damages were repaired at the vehicle. Traces of repairs, which allow conclusions about the area of repair, were not recognizable during the inspection.

## Comments

Der beiliegende Winterradsatz ist kein Teil der Ausstattung.



Figure 1: Diagonal front (left)



Figure 2: Diagonal front (right)



Figure 3: Diagonal rear (left)



Figure 4: Diagonal rear (right)



Figure 5: Interior - front



Figure 6: Interior - rear



Figure 7: Instrument cluster



Figure 8: Instrument panel



Figure 9: Interior 360° view



Figure 10: Cargo area

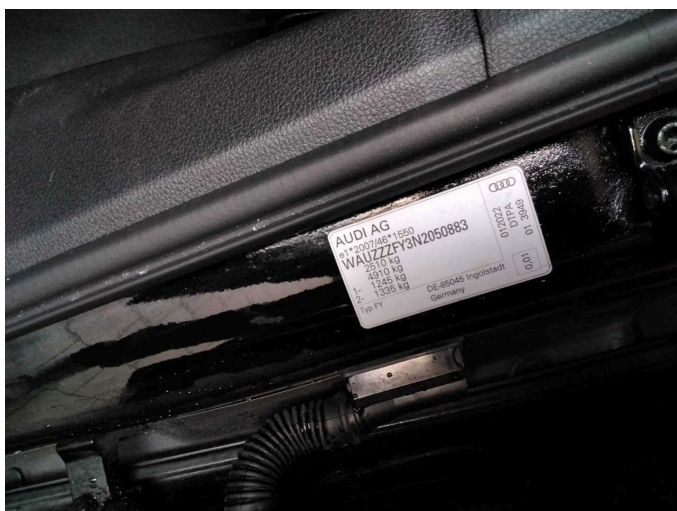


Figure 11: VIN



Figure 12: Mounted tyres

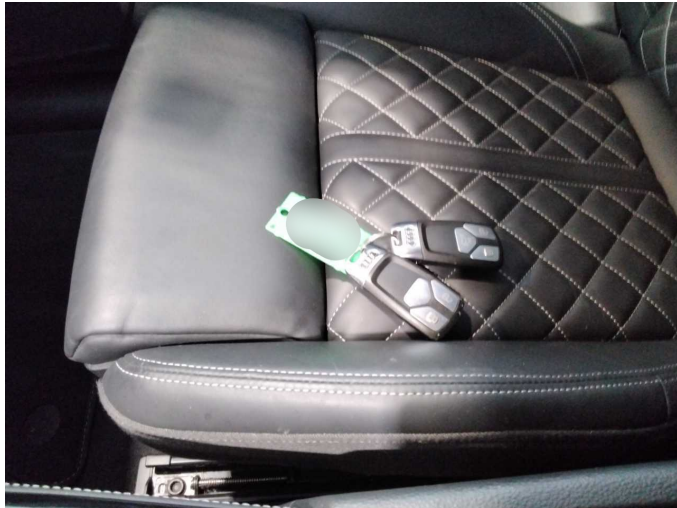


Figure 13: Documents



Figure 14: Additional tyres



Figure 15: Additional tyres

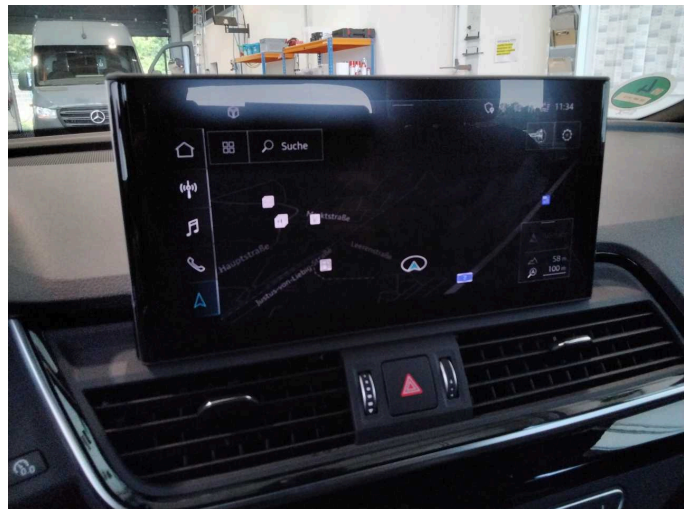


Figure 16: Navigation

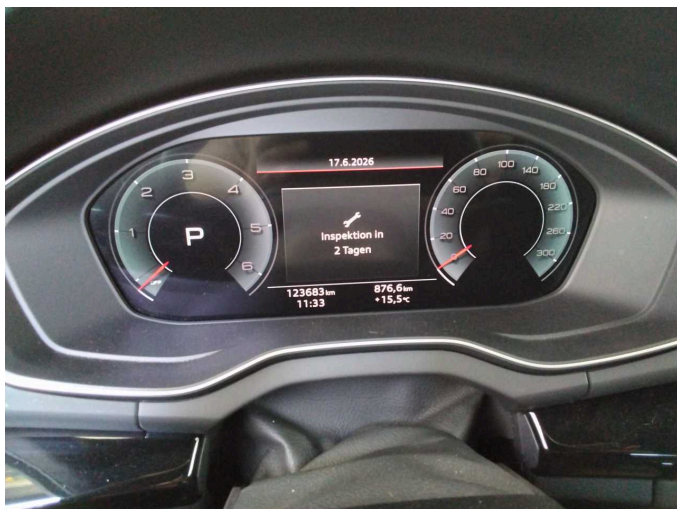


Figure 17: Misc.



Figure 18: Misc.



Figure 19: Misc.



Figure 20: Misc.



Figure 21: Misc.



Figure 22: Misc.



Figure 23: Misc.



Figure 24: Misc.



Figure 25: Misc.



Figure 26: Misc.



Figure 27: Misc.



Figure 28: Misc.

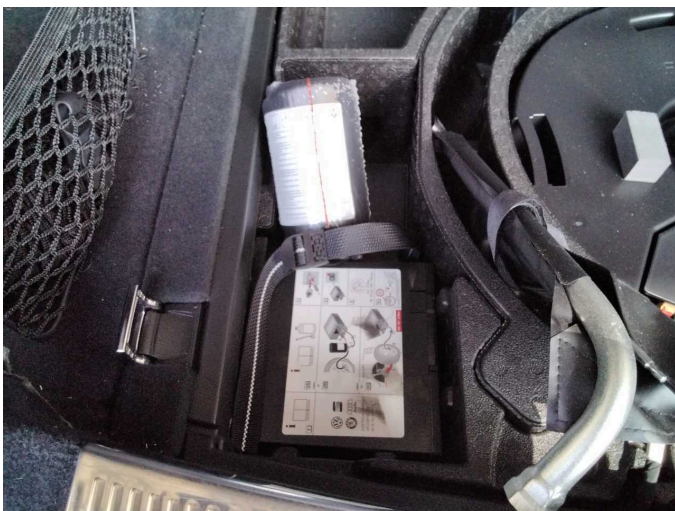


Figure 29: Misc.



Figure 30: Misc.



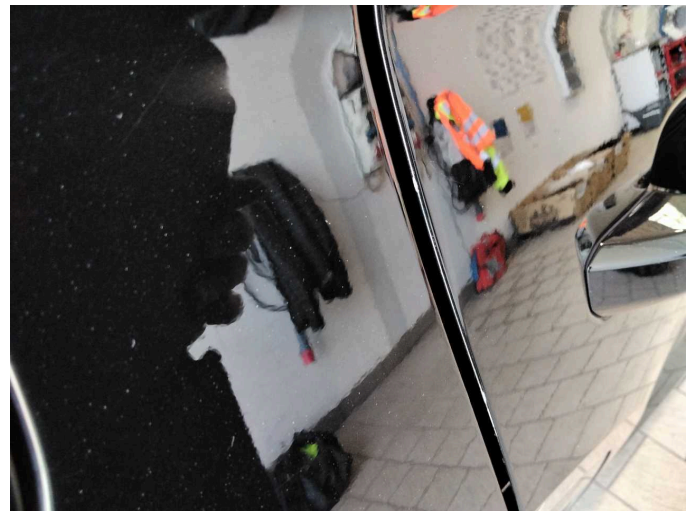
Figure 31: Misc.



Damage 1: Door - rear left side: Door handle - outside - Scratch(es) - Smart repair



Damage 1: Door - rear left side: Door handle - outside - Scratch(es) - Smart repair



Damage 2: Door - rear right side: Door edge - Scratch(es) - Smart repair



Damage 3: Bonnet: Bonnet - dent(s) - Smooth repair work



Damage 3: Bonnet: Bonnet - dent(s) - Smooth repair work



**Damage 4:** Body: C-pillar - right side - Dent / paintcoat damage - Smart repair



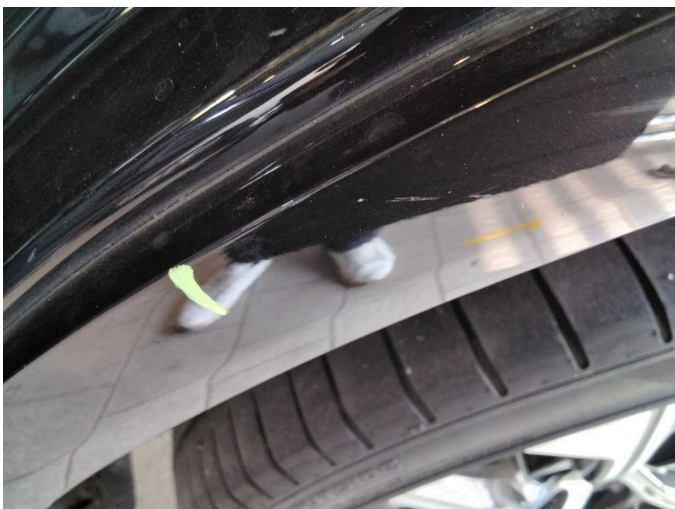
**Damage 4:** Body: C-pillar - right side - Dent / paintcoat damage - Smart repair



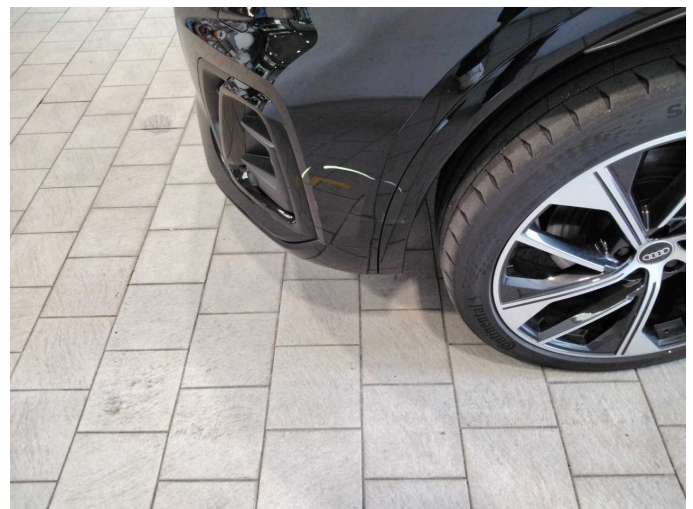
**Damage 4:** Body: C-pillar - right side - Dent / paintcoat damage - Smart repair



**Damage 5:** Side panel - rear left side: Wheel well extension - Scratch(es) - Smart repair



**Damage 5:** Side panel - rear left side: Wheel well extension - Scratch(es) - Smart repair



**Damage 6:** Mudguard - left side: Wheel well extension - Scratch(es) - Smart repair



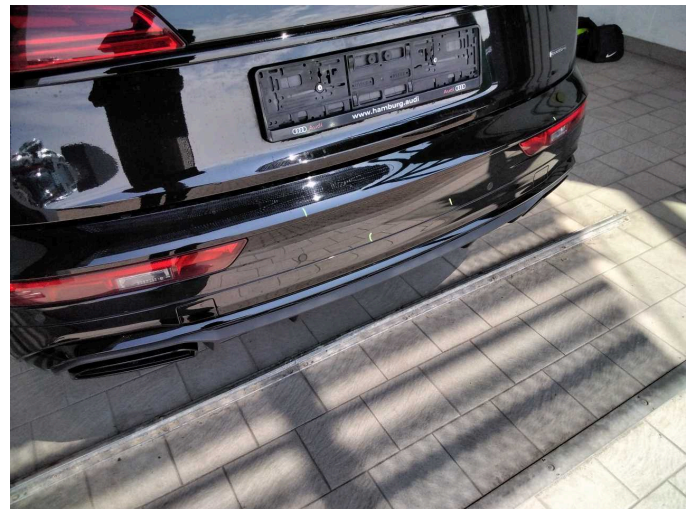
**Damage 6:** Mudguard - left side: Wheel well extension - Scratch(es) - Smart repair



**Damage 7:** Front bumper: Front bumper - Scratch(es) - Smart repair



**Damage 7:** Front bumper: Front bumper - Scratch(es) - Smart repair



**Damage 8:** Rear bumper: Rear bumper - Scratch(es) - Smart repair



**Damage 8:** Rear bumper: Rear bumper - Scratch(es) - Smart repair



**Damage 8:** Rear bumper: Rear bumper - Scratch(es) - Smart repair



**Damage 8:** Rear bumper: Rear bumper - Scratch(es) - Smart repair



**Damage 9:** Wheel / tyres: Tyre - front right side - Damaged - Replace



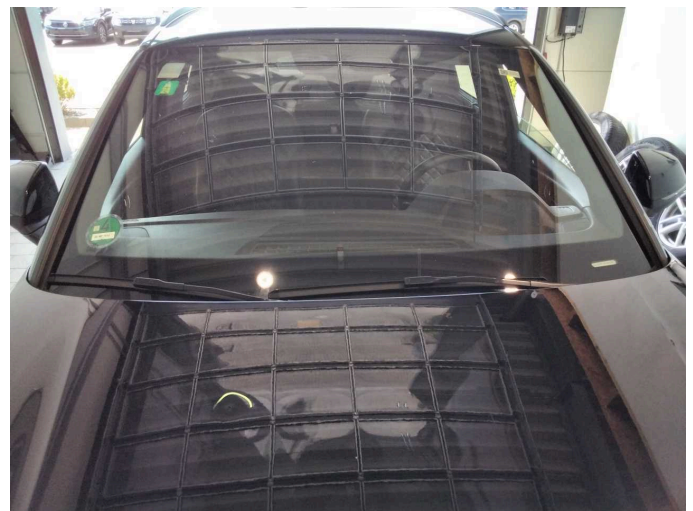
**Damage 10:** Wheel / tyres: Alloy rim - rear right side - Scratch(es) - Replace



**Damage 10:** Wheel / tyres: Alloy rim - rear right side - Scratch(es) - Replace



**Damage 11:** Wheel / tyres: Alloy rim - front right side - Scratch(es) - Replace



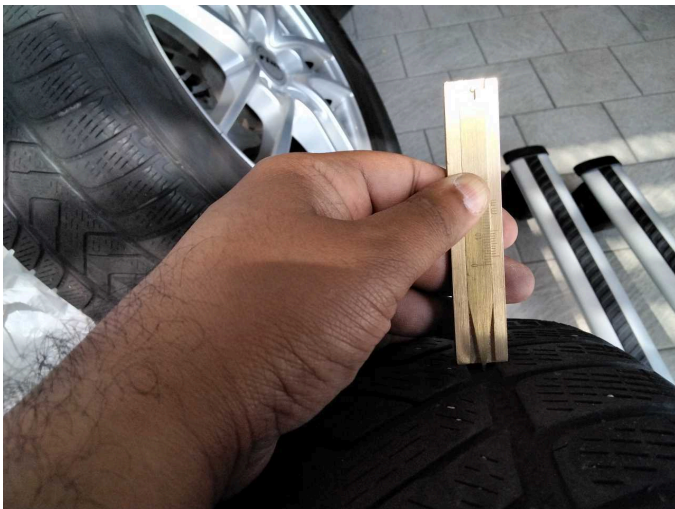
**Wear and tear 1:** Vehicle glazing: Windscreen - Stone chips - No deduction



**Wear and tear 2:** 2nd wheel set: Tyres - complete set (Kein Teil der Ausstattung) - does not comply with manufacturer's specifications - No deduction



**Wear and tear 2:** 2nd wheel set: Tyres - complete set (Kein Teil der Ausstattung) - does not comply with manufacturer's specifications - No deduction



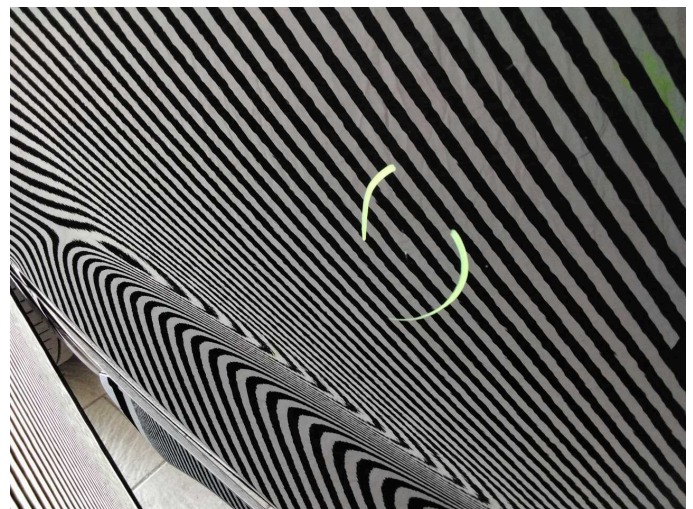
**Wear and tear 2:** 2nd wheel set: Tyres - complete set (Kein Teil der Ausstattung) - does not comply with manufacturer's specifications - No deduction



**Wear and tear 2:** 2nd wheel set: Tyres - complete set (Kein Teil der Ausstattung) - does not comply with manufacturer's specifications - No deduction



**Wear and tear 3:** Door - rear right side: Door - dent(s) - No deduction



**Wear and tear 3:** Door - rear right side: Door - dent(s) - No deduction



# Wartungshistorie

(gemäß Auftraggeber Informationen)

Fahrgestellnummer: WAUZZZF3N2050883  
Hersteller / Modell: AUDI AUDI Q5 40 TDI quattro S tronic S line

Datum	KM-Stand	Beschreibung
17.12.2025	115.430	Bremsbelagfühler ern; Bremse Sonstiges; Bremsklötze hinten; Bremsklötze vorne; Bremsscheiben + Klötze h; Bremsscheiben + Klötze v; Bremsscheiben hinten; Bremsscheiben vorne; Getriebeöl ern/prüfen; Kraftstofffilter ern; Regelwartungsdienst; Reparatur Sonstiges
16.09.2025	104.123	Motoröl b. Wartung; Ölfilter ern; Ölwechsel; Wartung Sonstiges
18.06.2025	102.320	AU; Wartung Sonstiges
03.12.2024	90.742	Luftfiltereinsatz ern; Regelwartungsdienst
12.07.2024	80.706	Motoröl b. Wartung; Ölfilter ern; Ölwechsel; Wartung Sonstiges
14.06.2024	78.505	Bremsflüssigkeit; Bremsflüssigkeit ern
27.09.2023	61.192	Getriebeöl ern/prüfen; Kraftstofffilter ern; Regelwartungsdienst; Reparatur Sonstiges; Wartung Sonstiges
07.07.2023	56.821	Motoröl b. Wartung; Ölfilter ern; Ölwechsel; Wartung Sonstiges
19.12.2022	32.449	Motoröl b. Wartung; Ölfilter ern; Regelwartungsdienst; Wartung Sonstiges