

Expertise

Protocol number: 45128651
Order No. / Reference: 26114657
Inspection date: 24 Apr 2026

Manufacturer: Volvo

Model: V60 B4 D Geartronic Momentum Pro

VIN: YV1ZWK5VDN2479461



Vehicle details

Manufacturer / Type / Model / Equipment

Volvo V60 B4 D Geartronic Momentum Pro

Vehicle Identification number	YV1ZWK5VDN2479461
Mileage (Read)	76,658 km
First registration	7 Dec 2021
Number of holders	1
Next periodical technical inspection	01/2027 (Report not on hand)

Power / Engine displacement	145 kw / 1,969 ccm
Fuel type / Cylinder	Hybrid Diesel / E / 4
Gearbox / Number of gears	Automatic / 8
Type of drive	Front drive
Type of vehicle	Station wagon

Colour / colour code	Ice White
Doors / Seats	5 / 5
Upholstery type	Cloth
Colour of upholstery	Anthracite-Black



Vehicle details

Maintenance booklet / proof	digital evidence / incomplete	Next maintenance in	0 Tag(e)
Last service on / at	01/2025 at 68,182 km		
Key is / should be	2 / 2	FZG documents	ZB#2 (B) was available (copy), ZB#1 (S) was not available.
		Letter No.	GC691755
Previous damage / Accident	Detectable	Repainting	None detectable
Inspection conditions	sufficient	Lifting equipment / pit	yes
Test drive	Not performed	Engine function test	Performed
Manufacturer key number/ type code number	9101 / BTH 00009		
Emission standard	EURO6;WLTP;AP;PI/CI; M, N1 I	fine dust sticker	
Permitted total weight	2,280 kg	Empty weight	

Tyres

Mounted tyres

#	Tyre size	Type of tyre	Manufacturer	Tread depth
1)	225/50 R17 98H	Winter tyres on Light alloy	Dunlop	6mm / 6mm
2)	225/50 R17 98H	Winter tyres on Light alloy	Goodyear	6mm / 6mm

Additional tyres

#	Tyre size	Type of tyre	Manufacturer	Tread depth
1)	225/50 R17 98Y	Summer tyres on Light alloy	Continental	4mm / 4mm
2)	225/50 R17 98Y	Summer tyres on Light alloy	Continental	4mm / 4mm

Legend: Tread depth information for the left tire is listed first, for the right tire it is listed second on the axle in the direction of travel.



Equipment

Standard equipment

- ABS - Anti-lock Braking System
- Driver and passenger side airbags with two-stage deployment system
- Heated exterior mirrors and rear window (automatic)
- Attachment system for carrier bags in the luggage compartment
- LED turn signals integrated into the exterior mirrors
- third brake light
- CleanZone air quality system
- Connected Safety
- Black roof rails (integrated)
- Drive Mode
- Driver Alert - Attention Warning
- Rear parking assist
- Electronic Stability Control (ESC)
- Electric windows front and rear
- Automatic emergency braking
- Luggage compartment partition net
- Transmission: 8-speed Geartronic
- Automatic tailgate (electric)
- Interior and exterior mirrors with automatic dimming function
- ISOFIX anchors for the outer rear seats
- Child safety lock (manual, rear doors)
- Headrests (5) front and rear,
- Paint finish: Solid
- Stainless steel loading sill protector in the luggage compartment
- LED headlights "Thor's Hammer"
- Steering wheel: Multifunction buttons on the steering wheel
- Rear center armrest (foldable) with cup holders
- Sensus navigation system
- Emergency brake lights
- Electric parking brake
- Particulate filter: Soot particle filter for diesel engines
- Radio: High Performance Sound audio system
- Radio accessories: Apple CarPlay and Android Auto
- Radio accessories: Two USB-C ports on the back of the center console
- Road Sign Information (RSI)
- Wheels: 17" alloy wheels, 5-twin-spoke design
- Wheel accessories: Tire sealant
- Safety braking system with disc brakes all around (internally ventilated)
- Seats: Driver and front passenger seats are height-adjustable (electrically)
- Seats: Rear seats in a 40/60 split or fully foldable with pass-through function
- Fuel filler neck with misfuelling protection
- Volvo On Call with WiFi hotspot
- Front passenger airbag can be deactivated
- Electrically folding exterior mirrors
- Electrically adjustable exterior mirrors
- Outdoor temperature display
- Hill Start Assist (HSA)
- fog sensor
- On-board computer with vehicle control functions
- City Safety
- Colored glazing
- Roof edge spoiler
- Digital instrumentation 12.3" full-graphic display (31.2 cm diagonal, high-resolution)
- Insoles: Iron Ore
- Aluminum door sill plates with Volvo lettering at the front
- Electronic differential lock
- Chrome window surround
- Front grille in waterfall design in black
- Cruise control system with variable speed limiter
- Front seat belt height adjustment
- rear window wiper
- Interior lighting
- Intelligent driver information system
- Keyless Drive (electronic access system)
- Automatic air conditioning
- Rear headrests foldable, electrically
- Charging box under the cargo floor
- Cargo area roller blind
- Lane Keeping Aid (LKA) - Active lane keeping assistant
- Steering wheel adjustable for height and reach
- Illuminated makeup mirror for driver and front passenger
- Front center armrest with integrated storage compartment and cup holders
- Oncoming Lane Mitigation
- Parking ticket holder
- Upholstery: Textile comfort seats
- Radio: Sensus Connect infotainment system
- Radio accessories: Digital radio reception (DAB+)
- Rain sensor
- Road Edge Detection
- Run-off Road Protection
- Wheels: Tire pressure monitoring system (passive)
- Speed-sensitive power steering
- Seat belts
- Safety steering column (adaptive)
- Seats: Lumbar support (2-way electrically adjustable) for driver and front passenger seats
- Start/Stop technology



- Immobiliser
- Central locking system with two remote controls and integrated emergency keys

- Power socket
- Lashing eyes in the luggage compartment (foldable)
- Preparation for Trailer Stability Assist (TSA)
- WHIPS whiplash protection system

Extra equipment

- Towbar (semi-electric)
- Package: Parking Assistance Package (front and rear parking aid - reversing camera)

- Child safety lock for the rear doors, electric
- Package: Winter Package (front seat heating - steering wheel heating)

Brief expert findings

Documents submitted	At the time of the inspection, the vehicle registration certificate Part 2 (title) was available, but the vehicle registration certificate Part 1 (document) was not. (Copy)
VIN comparison	The vehicle identification number (VIN) was read from the vehicle and its conformity with the submitted documents was confirmed by the undersigned during the inspection.
Inspection	The inspection conditions were sufficient for the assessment of the vehicle. Lifting equipment and/or a pit were available for examining the vehicle.
Test drive	No test drive/shunting maneuver was carried out during the inspection of the vehicle.
Engine function test	An engine test run was performed.

Value reducing factors

No.	Component group	Description
1	Equipment	Vehicle key (Batterie) - Empty - Replace
2	Boot lid / rear door	Gas pressure damper (Motoren, schwergängig, Knarren) - Functional / admissibility - Perform diagnosis
3	Side panel - rear left side	Side panel - dent(s) - Smooth repair work
4	Body	B-pillar - left side - Dent / paintcoat damage - Smart repair
5	Misc.	Inspection / maintenance - Due - Perform

Wear and tear

No.	Component group	Description
1	Misc.	Main inspection - No evidence - No deduction
2	Boot lid / rear door	Boot lid - dent(s) - No deduction

The vehicle shows signs of wear and tear commensurate with its age and use.

Missing parts

Description

Equipment - Tirefit filler

Previous damages

No.	Previous damage	Extent of damage (Net)
1	Front, Provided by user / customer, from 3 Jul 2025	3.740,83 €



Order/Scope of Order

An order was placed to prepare a sales report for the described vehicle. This report includes the following:

- Description of key vehicle information
- Documentation of equipment features
(Delivery by third-party service providers)
- Documentation of damage, defects, missing parts
- Documentation of prior damage, unrepaired prior damage, repainting
- A brief visual or functional inspection of the equipment details, if possible.
(Functional testing of driver assistance systems is not included in the scope of services!)
- a photographic documentation of the vehicle

Basis for the order

This product is based on the guidelines for vehicle returns and valuations published by Alphabet Fleet GmbH. The expert makes the specific findings in each individual case objectively, within the framework of the prescribed standards, based on their own expertise.

The vehicle inspection takes place in a fully assembled, unassembled state.

Damage or defects that can only be detected during disassembly/diagnostic work or through further investigation remain within the realm of prognostic risk. An increased risk exists due to concealed defects caused by fraudulent misrepresentation and which were not identifiable by the expert.

Damage or defects resulting from normal use or wear and tear of the vehicle will be accepted in accordance with the applicable standard.

There was no explicit identification or monetary consideration of the expected features within the product.

Features which, in their nature and extent, slightly exceed normal use but do not constitute unacceptable damage, will be documented and indicated as signs of wear, if applicable.

Damage or defects that, according to the applicable standard, can no longer be attributed to normal use or wear and tear are listed under "Value Reducing Factors" in the product description.

Depending on the product specification, a monetary ID can be provided. If this takes place, the costs can be 100% d or pro rata depending on the vehicle's age and mileage.

Previous damages

According to available information previous damages were repaired at the vehicle. Traces of repairs, which allow conclusions about the area of repair, were not recognizable during the inspection.

Comments

- Winterradsatz ist kein Bestandteil des Auslieferungsumfangs.



Figure 1: Diagonal front (left)



Figure 2: Diagonal front (right)



Figure 3: Diagonal rear (left)



Figure 4: Diagonal rear (right)



Figure 5: Interior - front



Figure 6: Interior - rear



Figure 7: Instrument cluster



Figure 8: Instrument panel



Figure 9: Interior 360° view



Figure 10: Cargo area

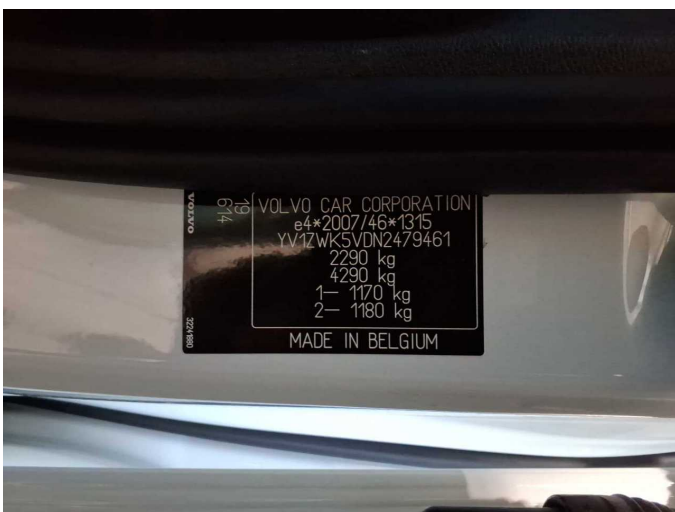


Figure 11: VIN



Figure 12: Mounted tyres



Figure 13: Documents

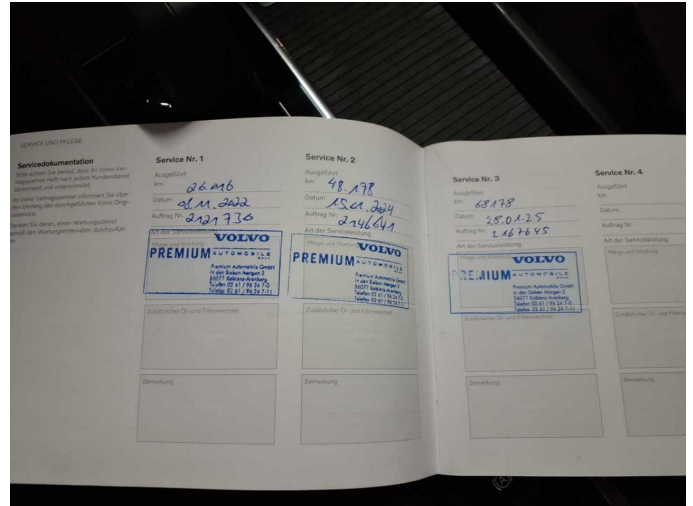


Figure 14: Documents



Figure 15: Additional tyres



Figure 16: Navigation



Figure 17: Misc.



Figure 18: Misc.



Figure 19: Misc.



Figure 20: Misc.



Figure 21: Misc.



Figure 22: Misc.



Figure 23: Misc.



Figure 24: Misc.



Figure 25: Misc.



Figure 26: Misc.



Figure 27: Misc.



Figure 28: Misc.



Damage 2: Boot lid / rear door: Gas pressure damper (Motoren, schwergängig, Knarren) - Functional / admissibility - Perform diagnosis



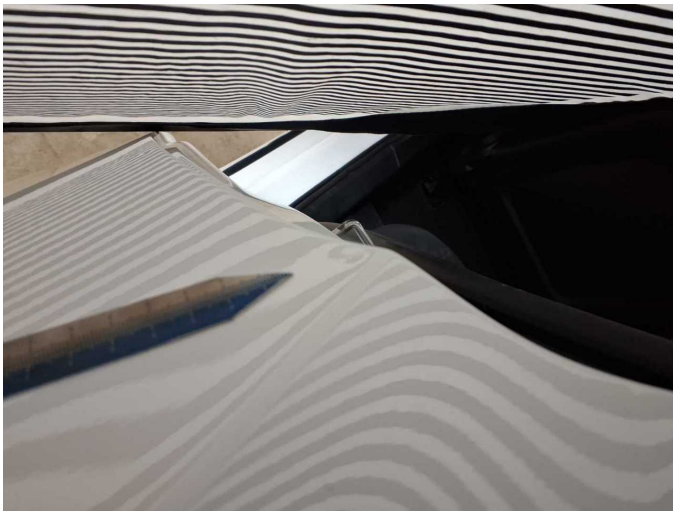
Damage 2: Boot lid / rear door: Gas pressure damper (Motoren, schwergängig, Knarren) - Functional / admissibility - Perform diagnosis



Damage 2: Boot lid / rear door: Gas pressure damper (Motoren, schwergängig, Knarren) - Functional / admissibility - Perform diagnosis



Damage 3: Side panel - rear left side: Side panel - dent(s) - Smooth repair work



Damage 3: Side panel - rear left side: Side panel - dent(s) - Smooth repair work



Damage 4: Body: B-pillar - left side - Dent / paintcoat damage - Smart repair



Damage 4: Body: B-pillar - left side - Dent / paintcoat damage - Smart repair



Damage 5: Misc.: Inspection / maintenance - Due - Perform



Damage 5: Misc.: Inspection / maintenance - Due - Perform



Missing part 1: Equipment: Tirefit filler - Missing - Replace



Wartungshistorie

(gemäß Auftraggeber Informationen)

Fahrgestellnummer: YV1ZWK5VDN2479461

Hersteller / Modell: VOLVO VOLVO V60 B4 D Geartronic Momentum Pro

Datum	KM-Stand	Beschreibung
28.01.2025	68.182	AU; Motoröl b. Wartung; Ölfilter ern; Regelwartungsdienst; Wartung Sonstiges
03.01.2024	26.016	Bremsflüssigkeit; Bremsflüssigkeit ern; Kraftstofffilter ern; Luftfiltereinsatz ern; Motoröl b. Wartung; Ölfilter ern; Regelwartungsdienst; Reparatur Sonstiges; Wartung Sonstiges
08.11.2022	25.000	Motoröl b. Wartung; Regelwartungsdienst