

Expertise

Protocol number: 46331617
Order No. / Reference: 26581874
Inspection date: 6 Jul 2026

Manufacturer: Ford

Model: Transit Custom 320 L1H1 LKW VA Trend

VIN: WF0YXXTTGYNY27668



Vehicle details

Manufacturer / Type / Model / Equipment

Ford Transit Custom 320 L1H1 LKW VA Trend

Vehicle Identification number WF0YXXTTGYNY27668

Mileage (Read) 95,818 km

First registration 14 Jun 2022

Number of holders 1

Power / Engine displacement 96 kw / 1,995 ccm

Fuel type / Cylinder Diesel / 4

Gearbox / Number of gears Manual / 6

Type of drive Front drive

Type of vehicle Van

Colour / colour code Frost-Weiß

Doors / Seats 4 / 3

Upholstery type Cloth

Colour of upholstery Black-Anthracite



Vehicle details

Maintenance booklet / proof	Available / incomplete	Next maintenance in	25,000 km
Key is / should be	2 / 2	FZG documents	ZB#2 (B) was available (copy), ZB#1 (S) was not available.
		Letter No.	GK829168
Previous damage / Accident	Detectable	Repainting	Detectable
Inspection conditions	sufficient	Lifting equipment / pit	yes
Test drive	Not performed	Engine function test	Performed
Manufacturer key number/ type code number	8566 / BMU 06911		
Emission standard	EURO6;WLTP;AR;PI/CI;N1 III, N2	fine dust sticker	
Permitted total weight	3,200 kg	Empty weight	

Tyres

Mounted tyres

#	Tyre size	Type of tyre	Manufacturer	Tread depth
1)	215/65 R16 107T	Summer tyres on Steel	Goodyear	4mm / 4mm
2)	215/65 R16 107T	Summer tyres on Steel	Goodyear	4mm / 4mm

Replacement

Typ	Tyre size	Type of tyre	Manufacturer	Tread depth
E	215/65 R16 107T C	Summer tyres on Steel	Goodyear	7 mm

Legend: Tread depth information for the left tire is listed first, for the right tire it is listed second on the axle in the direction of travel.



Equipment

Standard equipment

- 1 battery
- Anti-lock braking system with electronic brake force distribution (EBD)
- roof, flat
- Double-leaf rear door with 180° opening angle (without window)
- Electronic Stability Program (ESP) with Traction Control System (TCS)
- FordPass Connect
- Generator, 240 A
- Cruise control including imitation leather steering wheel
- Lockable glove compartment with lid
- Front air conditioning
- Paint finish: Solid color paint
- Cargo area floor: Vinyl floor covering, sealed, "Easy Clean"
- Emergency brake assist including emergency brake light
- Front and rear parking pilot system including fog lights
- Wheel trims
- Wheels: Steel wheels 6.5 J x 16 with 215/65 R 16 R tires
- Sliding door entry light automatically illuminates when the door is opened
- Side protection strips
- Power steering
- Start-stop system
- Lashing eyes 8
- Heat-insulating glazing, lightly tinted
- Auxiliary heater, electric

Extra equipment

- Package: Service Line (shelving systems (left and right) - vise - ventilation for transporting gas cylinders - HDF wall cladding - screen-printed wooden floor in the cargo area (the standard lashing eyes are omitted))
- Reversing camera (reversing camera with image transmission of the rear driving path in the multifunction display and coupling aid)
- Seats: Seat package 17A - Partition (load-through flap), without window (Custom Truck Trend (driver's seat, 4-way adjustable (forward/backward, backrest, seat cushion tilt, height) - double passenger seat with storage compartment under individually foldable seat cushions - height-adjustable headrests - integrated tray in the double passenger seat (foldable) - heated driver's seat - heated passenger seat (outer seat) - inner armrest for driver - manual lumbar support (driver's seat) - passenger and side airbags and front head/shoulder airbags - TREND seat cover: fabric)

- Driver's side airbag
- Exterior mirrors, electrically adjustable and heated
- On-board computer
- Headliner in driver's cab
- Tachometer
- Third brake light
- Front electric windows
- Ford Easy Fuel
- Warranty: 2-year Ford new car warranty including Ford Assistance mobility guarantee
- Transmission: 6-speed transmission
- Interior lighting with delay circuit
- Fuel tank 70 l
- Cargo area lighting with activatable switch-off delay
- Steering column, adjustable in height and reach
- Package: Style-Color Package
- Particulate filter: diesel particulate filter
- Wheels/Tires: Spare wheel, steel wheel
- Headlights: Halogen projector headlights
- Sliding door: Sliding door, right
- Mud flaps front and rear
- Half-height side wall cladding
- Seat belts
- Power outlet: 12-volt connection
- Immobiliser
- Central locking with remote control

- Cargo area ventilation
- LED lights in the cargo area
- Radio: Audio System 24: Ford audio system including Ford SYNC 3 with AppLink, DAB/DAB+, navigation system. (Radio (FM/AM) 8" touchscreen multifunction display (20.32 cm), 4 speakers, FordPass Connect Wi-Fi hotspot, integrated control panel and audio remote control on the steering wheel, Ford SYNC 3 with touchscreen (hands-free system with voice control, SMS readout/sending function, Bluetooth, Emergency Assistance...), AppLink (advanced voice control, privacy mode, Android Auto and Apple CarPlay support, capacitive touchscreen technology,...), dynamic navigation, lane guidance, road map for Western Europe)
- Roof rack (integrated and foldable - max. roof load: 100 kg)
- Towing device (fixed, 13-pin socket - incl. trailer stability control (TSC))



Brief expert findings

Documents submitted	At the time of the inspection, the vehicle registration certificate Part 2 (title) was available, but the vehicle registration certificate Part 1 (document) was not. (Copy)
VIN comparison	The vehicle identification number (VIN) was read from the vehicle and its conformity with the submitted documents was confirmed by the undersigned during the inspection.
Inspection	The inspection conditions were sufficient for the assessment of the vehicle. Lifting equipment and/or a pit were available for examining the vehicle.
Test drive	No test drive/shunting maneuver was carried out during the inspection of the vehicle.
Engine function test	An engine test run was performed.

Value reducing factors

No.	Component group	Description
1	Misc.	Inspection / maintenance - No evidence - No deduction
2	Misc.	Main inspection - No evidence - No deduction
3	Front bumper	Front bumper (unpainted) - Scratched - Smart repair
4	Wing mirror - left side	Cap - Scratch(es) - Smart repair
5	Boot lid / rear door	Rear door - left side - Scratch(es) - Smart repair
6	Door - front right side	Door - Dent / paintcoat damage - Smart repair

Wear and tear

No.	Component group	Description
1	Bonnet	Bonnet - Stone chips - No deduction
2	Front bumper	Front bumper - Stone chips - No deduction
3	Vehicle glazing	Windscreen - Stone chips - No deduction
4	Interior	Interior - Scratch(es) - No deduction

The vehicle shows signs of wear and tear commensurate with its age and use.

Previous damages

No.	Previous damage	Extent of damage (Net)
1	Side right, Provided by user / customer, from 10 Apr 2026	3.677,06 €
2	Front, Side - left, Side right, Provided by user / customer, from 10 May 2023	4.750,05 €

Repainting

No.	Repainting
1	Side panel - rear right side, Door - rear right side, Door - front left side, Professionally carried out, Invoice of repair done Non-existent

Order/Scope of Order

An order was placed to prepare a sales report for the described vehicle. This report includes the following:

- Description of key vehicle information
- Documentation of equipment features
(*Delivery by third-party service providers*)
- Documentation of damage, defects, missing parts
- Documentation of prior damage, unrepaired prior damage, repainting
- A brief visual or functional inspection of the equipment details, if possible.
(*Functional testing of driver assistance systems is not included in the scope of services!*)
- a photographic documentation of the vehicle



Basis for the order

This product is based on the guidelines for vehicle returns and valuations of light commercial vehicles published by Alphabet Fleet Management GmbH. The expert makes the specific findings in each individual case objectively, within the framework of the prescribed standards, based on their own expertise.

The vehicle inspection takes place in a fully assembled, unassembled state.

Damage or defects that can only be detected during disassembly/diagnostic work or through further investigation remain within the realm of prognostic risk. An increased risk exists due to concealed defects caused by fraudulent misrepresentation and which were not identifiable by the expert.

Damage or defects resulting from normal use or wear and tear of the vehicle will be accepted in accordance with the applicable standard.

There was no explicit identification or monetary consideration of the expected features within the product.

Features which, in their nature and extent, slightly exceed normal use but do not constitute unacceptable damage, will be documented and indicated as signs of wear, if applicable.

Damage or defects that, according to the applicable standard, can no longer be attributed to normal use or wear and tear are listed under "Value Reducing Factors" in the product description.

Depending on the product specification, a monetary ID can be provided. If this takes place, the costs can be 100% d or pro rata depending on the vehicle's age and mileage.

Previous damages

According to available information previous damages were repaired at the vehicle. Traces of repairs, which allow conclusions about the area of repair, were not recognizable during the inspection.



Figure 1: Diagonal front (left)



Figure 2: Diagonal front (right)



Figure 3: Diagonal rear (left)



Figure 4: Diagonal rear (right)

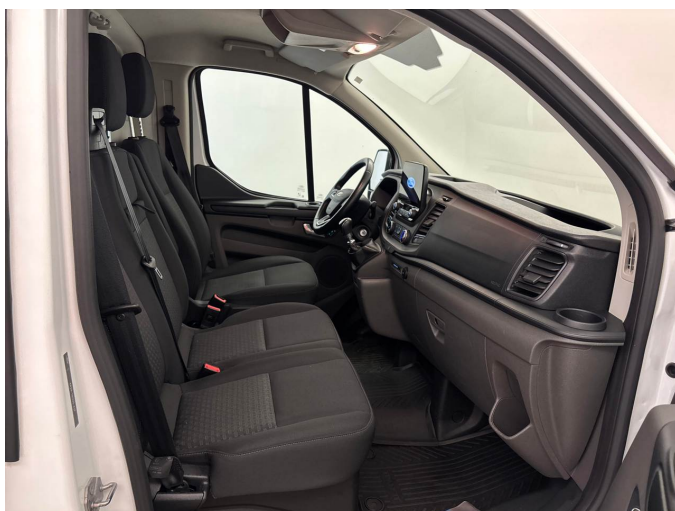


Figure 5: Interior - front

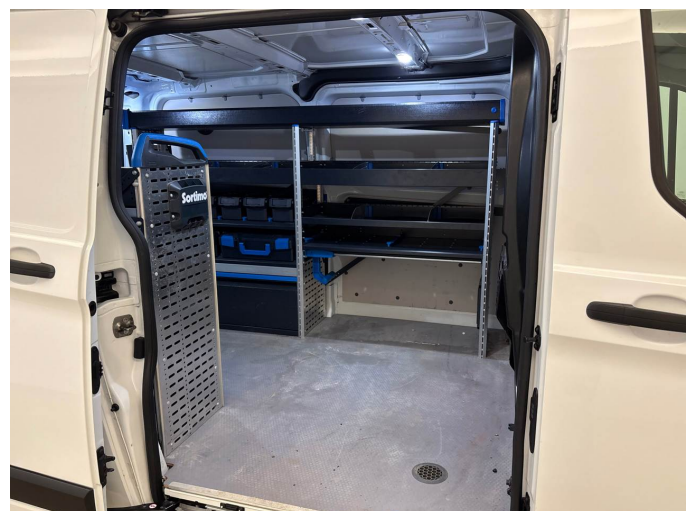


Figure 6: Interior - rear



Figure 7: Instrument cluster



Figure 8: Instrument panel



Figure 9: Interior 360° view



Figure 10: Cargo area



Figure 11: VIN



Figure 12: Mounted tyres



Figure 13: Documents

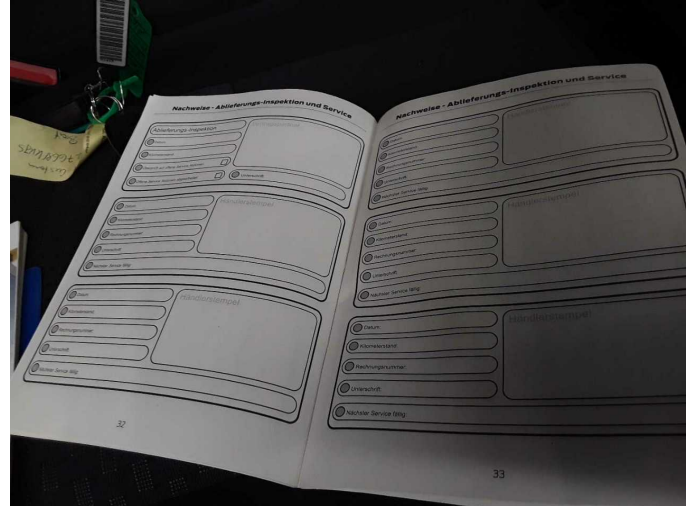


Figure 14: Documents



Figure 15: Navigation



Figure 16: Misc.

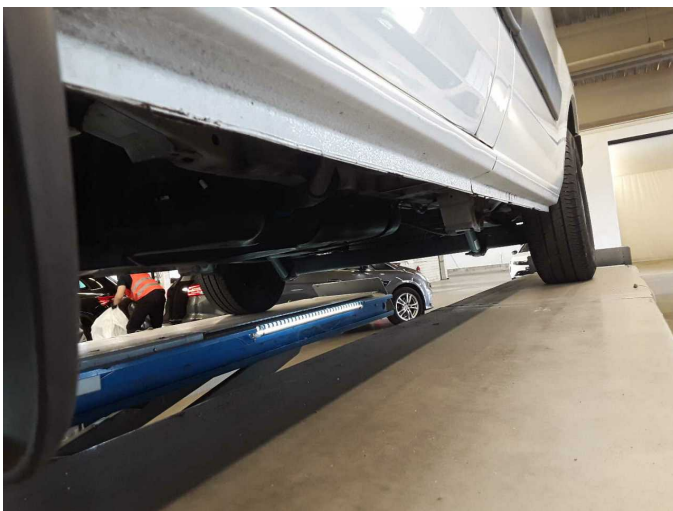


Figure 17: Misc.



Figure 18: Misc.



Figure 19: Misc.



Figure 20: Misc.



Figure 21: Misc.

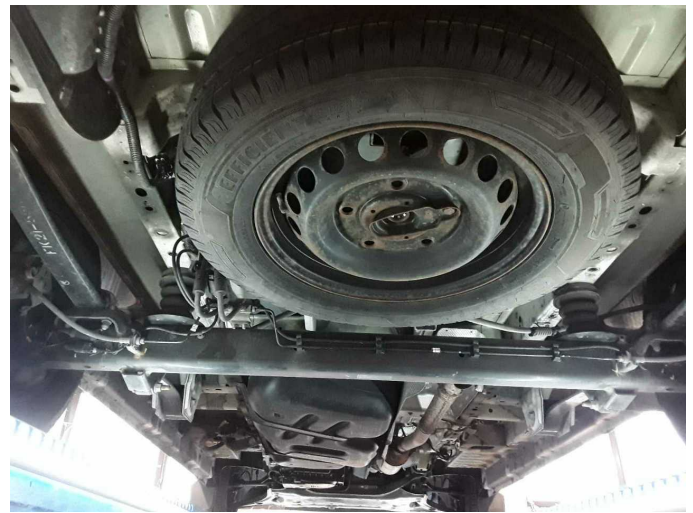


Figure 22: Misc.



Figure 23: Misc.



Figure 24: Misc.



Figure 25: Misc.

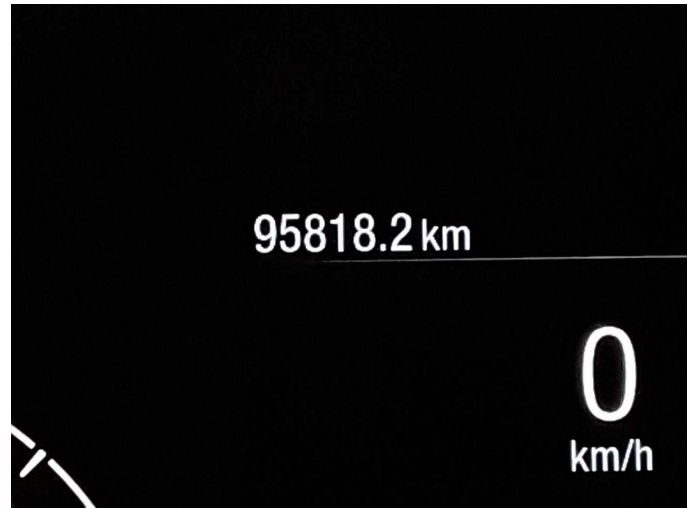


Figure 26: Misc.

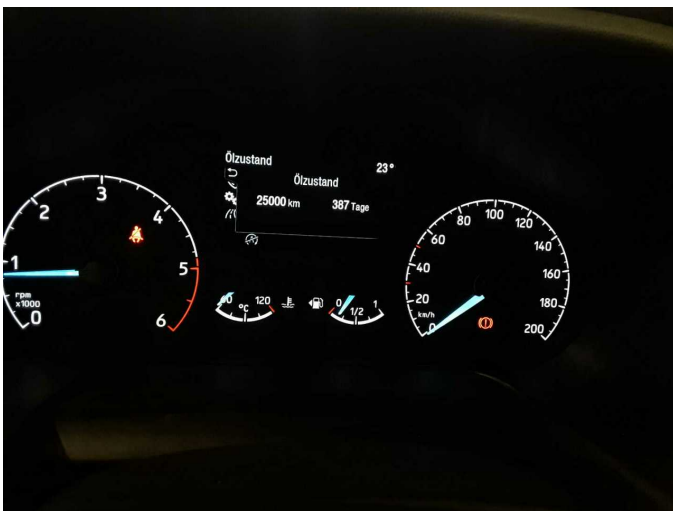


Figure 27: Misc.



Damage 3: Front bumper: Front bumper (unpainted) - Scratched - Smart repair



Damage 3: Front bumper: Front bumper (unpainted) - Scratched - Smart repair



Damage 4: Wing mirror - left side: Cap - Scratch(es) - Smart repair



Damage 4: Wing mirror - left side: Cap - Scratch(es) - Smart repair



Damage 5: Boot lid / rear door: Rear door - left side - Scratch(es) - Smart repair



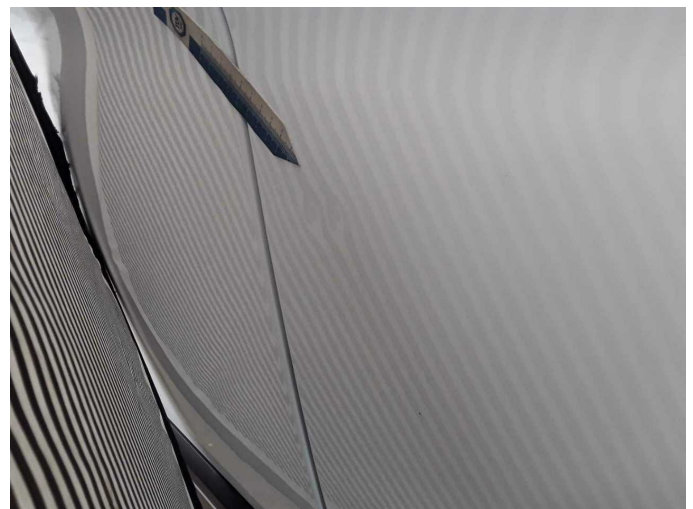
Damage 5: Boot lid / rear door: Rear door - left side - Scratch(es) - Smart repair



Damage 5: Boot lid / rear door: Rear door - left side - Scratch(es) - Smart repair



Damage 6: Door - front right side: Door - Dent / paintcoat damage - Smart repair



Damage 6: Door - front right side: Door - Dent / paintcoat damage - Smart repair



Damage 6: Door - front right side: Door - Dent / paintcoat damage - Smart repair



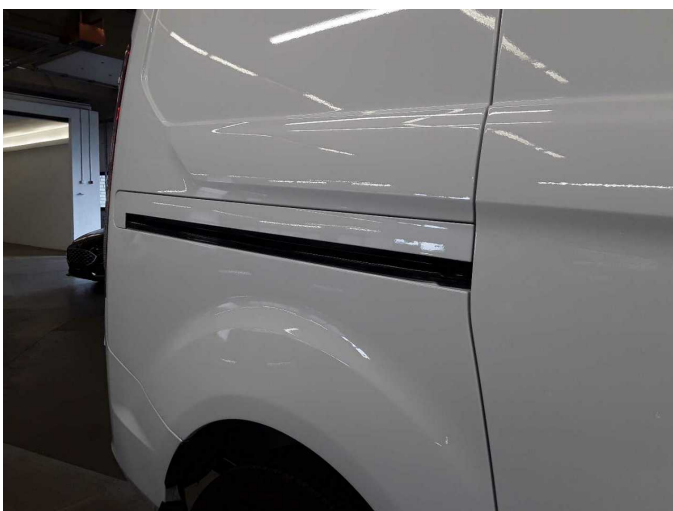
Repainting 1: Side panel - rear right side, Door - rear right side, Door - front left side



Repainting 1: Side panel - rear right side, Door - rear right side, Door - front left side



Repainting 1: Side panel - rear right side, Door - rear right side, Door - front left side



Repainting 1: Side panel - rear right side, Door - rear right side, Door - front left side



Repainting 1: Side panel - rear right side, Door - rear right side, Door - front left side



Repainting 1: Side panel - rear right side, Door - rear right side, Door - front left side