

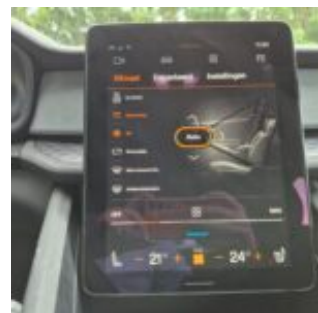
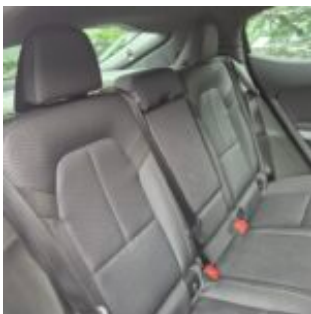
2-DSR-352

2-DSR-352 · 78kW Long Range Single Motor MY23 · 30 June 2026 · Zaventem (BE)

Specifications

License Plate Number	2-DSR-352	Fuel Type	Electric
Manufacturer	POLESTAR	VIN	YSMVSEGE8PL168254
Model	2	Transmission Type	Automatisch geschakelde Transmissie
Model Versions	78kW Long Range Single Motor MY23	First Admission	14-06-2023
Body Type	5 door hatchback	Odometer	62.447 ^{Km}
Color	White	Numer Of Keys	2
Paint Type	Metallic	Interior	Grey
Production Year	2023	Number Headrests	5
KW	170		

Images





Accessories

ABS

Airbags

Alloy wheels

Audio System

Automatic air conditioning

Bluetooth car kit

Central door locking

Centre armrest

Charging cable - 230v

Charging cable - 380v

Cruise control

Electric rear windows

Electric windows front

Electrically adjustable exterior mirrors

Fog lights

Front & rear parking sensors

Leather steering wheel

Navigation system

Rear view camera

Roller cover / parcel shelf

Seat heating

Steering wheel multifunction

Condition

Condition exterior Adequate

Condition interior Adequate

Last Maintenance Unknown

Previous Repairs

Unknown

Tire Specifications

Tire	Profile	Brand	Width	Aspect Ratio	Radial	Type
Front Left	2 ^{mm}	Bridgestone	245 ^{mm}	45 ^{mm}	19 ^{inch}	Summer
Rear Left	6 ^{mm}	Michelin	245 ^{mm}	45 ^{mm}	19 ^{inch}	Summer
Front Right	2 ^{mm}	Bridgestone	245 ^{mm}	45 ^{mm}	19 ^{inch}	Summer
Rear Right	6 ^{mm}	Michelin	245 ^{mm}	45 ^{mm}	19 ^{inch}	Summer
Spare Tire Type	Compressor					

Damages



Damage Part

Frontdoor - Right

Damage Type

small dents / small scratches

Repair Type

Panelbeating & Spray

Acceptable

No



Damage Part

Alloy - Left Rear

Damage Type

Damaged

Repair Type

Rim repair

Acceptable

No



Damage Part

Reardoor - Left

Damage Type

small dents / small scratches

Repair Type

Panelbeating & Spray

Acceptable

No



Damage Part

Alloy - Left Front

Damage Type

Damaged

Repair Type

Rim repair

Acceptable

No



Damage Part

Hood

Damage Type

small dents / small scratches

Repair Type

Panelbeating & Spray

Acceptable

No



Damage Part

Alloy - Right Front

Damage Type

Damaged

Repair Type

Acceptable

Acceptable

Yes



Damage Part

Damage Type

Repair Type

Acceptable

Alloy - Right Rear

Damaged

Rim repair

No



Damage Part

Damage Type

Repair Type

Acceptable

Bumper - Rear

Scratch(es)

Spray

No



Damage Part

Damage Type

Repair Type

Acceptable

Interior

Stains & dirt

Cleaning

No