

Expertise

Protocol number: 45919040
Order No. / Reference: 26344076
Inspection date: 10 Jun 2026

Manufacturer: Volvo

Model: XC60 B4 D Geartronic Momentum Pro

VIN: YV1UZZK5VDM1831165



Vehicle details

Manufacturer / Type / Model / Equipment

Volvo XC60 B4 D Geartronic Momentum Pro

Vehicle Identification number YV1UZZK5VDM1831165

Mileage (Read) 156,482 km

First registration 29 Apr 2021

Number of holders 1

Power / Engine displacement 145 kw / 1,969 ccm

Fuel type / Cylinder Hybrid Diesel / E / 4

Gearbox / Number of gears Automatic / 7

Type of drive Front drive

Type of vehicle SUV

Colour / colour code Black University

Doors / Seats 5 / 5

Upholstery type Cloth

Colour of upholstery Black



Vehicle details

Maintenance booklet / proof	Non-existent	Next maintenance in	95 Tag(e)
Key is / should be	2 / 2	FZG documents	ZB#2 (B) was available (copy), ZB#1 (S) was not available.
		Letter No.	GA553388
Previous damage / Accident	None detectable	Repainting	Detectable
Inspection conditions	sufficient	Lifting equipment / pit	yes
Test drive	Not performed	Engine function test	Performed
Manufacturer key number/ type code number	9101 / BTJ 00001		
Emission standard	EURO6;WLTP;AP;PI/CI; M, N1 I	fine dust sticker	
Permitted total weight	2,390 kg	Empty weight	

Tyres

Mounted tyres

#	Tyre size	Type of tyre	Manufacturer	Tread depth
1)	235/55 R19 105V	Summer tyres on Light alloy	Continental	3mm / 3mm
2)	235/55 R19 105V	Summer tyres on Light alloy	Continental	3mm / 3mm

Replacement

Typ	Tyre size	Type of tyre	Manufacturer	Tread depth
	Tirefit	Expiration date 03/2025		

Legend: Tread depth information for the left tire is listed first, for the right tire it is listed second on the axle in the direction of travel.

TÜV SÜD Auto Partner GmbH
Wiesenring 2
04159 Leipzig

Inspection location
Hartmann Fleet Professionals GmbH
Leerenstraße 25
29683 Bad Fallingbommel



Equipment



Standard equipment

- ABS - Anti-lock Braking System (with EBV)
- Passenger side airbag can be deactivated
- Airbag, driver's knee airbag
- Exhaust system with two chrome-plated tailpipes
- Electrically folding exterior mirrors
- Outdoor temperature display
- Hill Descent Control (HDC)
- Hill Start Assist (HSA)
- LED turn signals integrated into the exterior mirrors
- third brake light
- City Safety (automatic emergency braking system with detection of vehicles, cyclists, pedestrians and large animals, including intersection braking assistant, emergency braking assistant for oncoming traffic and steering support during evasive maneuvers)
- Roof edge spoiler
- Aluminum roof rails (integrated)
- Digital instrumentation (12.3" full graphic display (31.2 cm diagonal) with two variable round instruments and information display (e.g. for navigation map view))
- Driver Alert (Attention Warning)
- Rear parking assist
- Electronic differential lock Corner Traction Control (CTC)
- Electric windows front and rear (with auto-down and auto-up function)
- Cruise control system (and variable speed limiter)
- Automatic tailgate (electric)
- IDIS - Intelligent Driver Information System (delays incoming calls or vehicle information in potentially dangerous situations)
- ISOFIX mounting for the outer rear seats
- Keyless Drive (electronic access system with sensor-controlled tailgate, waterproof micro key and illuminated door handles and puddle lights)
- Automatic climate control with separate temperature control for driver and front passenger (and additional air vents for the 2nd row of seats (integrated in the B-pillar) including pre-ventilation and reheating of the interior when the engine is switched off via Volvo On Call smartphone app or menu)
- Cargo area roller blind
- LED fog lights (integrated into the front spoiler - only when selecting the "Full LED headlights - Thor's Hammer" option including cornering lights)
- Steering wheel adjustable for height and reach
- Illuminated makeup mirror for driver and front passenger
- Rear center armrest (foldable) (with cup holders)
- Front center armrest with integrated storage compartment and cup holders
- Emergency brake lights (brake lights flash rapidly during heavy deceleration; hazard warning lights are automatically activated at speeds below 10 km/h)
- Driver and passenger side airbags with two-stage deployment system
- Airbag, side airbags for driver and front passenger and head/shoulder airbags (iC) for all occupants
- Electrically adjustable and heated exterior mirrors on the left and right (driver and passenger side with wide-angle optics)
- Fog sensor for automatic activation of the defroster function
- On-board computer (with vehicle control functions)
- Chrome trim on the side windows
- CleanZone air quality system with activated carbon filter (automatic recirculation and pre-ventilation of the interior when the vehicle is unlocked)
- Connected Safety (Cloud-based warning of slippery road conditions and vehicles with hazard warning lights activated)
- Diesel particulate filter
- Drive Mode (driving mode settings for engine, transmission, steering, brakes and suspension: Comfort, Eco, Dynamic, Off Road, Individual)
- Aluminum inlay Iron Ore
- Aluminum door sill plates with Volvo lettering at the front
- ESC - Vehicle Dynamics Control
- Front grille in waterfall design in high-gloss black
- Luggage compartment partition net
- Transmission: 8-speed Geartronic automatic transmission
- Heated rear window
- Interior and exterior mirrors automatically dimming
- Interior lighting (headliner, front reading lights, front ambient lighting, front footwell, storage compartment behind center console, glove compartment and luggage compartment)
- Keyless Start (electronic engine start system)
- Child safety lock (rear doors)
- Headrests (5) front and rear
- Rear headrests foldable (electrically)
- Paint finish: Solid
- Charging box under the cargo floor
- Stainless steel loading sill protector in the luggage compartment
- Lane Keeping Aid (LKA) (Active Lane Keeping Assistant)
- LED headlights "Thor's Hammer" with high beam assist and integrated LED daytime running lights
- Leather gearshift lever
- Steering wheel: Leather steering wheel, 3-spoke design (anthracite) (multifunction buttons on the steering wheel in black)
- Sensus navigation system (3D navigation - destination input via natural voice control - dynamic route guidance with real-time traffic information - local search (surroundings search by keywords with information, ratings and photos) - Volvo Lifetime MapCare)
- Electric parking brake
- Upholstery: Textile



- Oncoming Lane Mitigation (preventive protection system when crossing the center line and approaching oncoming traffic, including steering intervention towards one's own lane)
- Radio accessories: Digital radio reception (DAB+)
- Radio accessories: Smartphone integration Apple CarPlay and Android Auto (integration of Apple iPhones and Android smartphones into the Sensus operating system)
- Radio accessories: Two USB-C ports on the back of the center console
- Rain sensor
- Road Edge Detection (system to protect against unintentional leaving of the roadway through steering and braking interventions)
- Wheels: Tire sealant (Incl. 12-volt compressor, maximum speed 80 km/h)
- Rear seats in a 40/60 split or completely foldable with pass-through function
- Speed-sensitive power steering
- Seat belts (active seat belts with belt tensioners, pre-activation of the belt tensioners only in conjunction with IntelliSafe Surround - belt height adjustment front - warning tone/indication when seat belts are not fastened (for all seats))
- Start/Stop technology
- Power outlet (12-volt connection in the luggage compartment)
- Glazing: Colored glazing
- Volvo On Call with Wi-Fi hotspot (including integrated modem, external antenna, and Wi-Fi hotspot for mobile devices). Volvo On Call features: automatic emergency call function with transmission of vehicle position and data, and alerting the Volvo On Call service center at the touch of a button (10-year subscription). Additionally, various convenience services are available via the smartphone app (3-year subscription, extendable upon request; includes extension of the emergency call function).

Extra equipment

- Package: IntelliSafe Package Pro (Pilot Assist: Adaptive cruise control with distance warning and lane keeping assist up to speeds of 130 km/h - IntelliSafe Surround: Blind Spot Information System (BLIS) including lane change warning for rapidly approaching vehicles and steering intervention; Cross Traffic Alert with braking intervention - cross traffic warning for vehicles, cyclists and pedestrians when reversing out of parking spaces, including braking; rear impact mitigation)
- Package: Winter Package Pro (front seat heating - heated wiper blades and windshield washer nozzles - auxiliary heater with timer (fuel-operated), remote activation possible via Volvo On Call app - rear seat heating (outer seats of the 2nd row) - heated steering wheel)
- Wheels: 19" alloy wheels, 5-twin-spoke design, diamond cut / graphite look (tires 235/55 R19 with rims 7.5 Jx 19")
- Phone: Inductive smartphone charging system (Wirelessly charges smartphones that support the Qi standard on a charging pad)

- Radio: Sensus Connect infotainment system with High Performance Sound (22.9 cm touchscreen (9" diagonal) - 330 watts of power - 10 speakers - 2x USB ports (compatible with Apple iPod/iPhone/iPad) - Bluetooth hands-free system incl. audio streaming - Internet access incl. internet radio and apps (via paired smartphone) - Voice control - Digital vehicle owner's manual - Connected Service Booking)
- Tire pressure monitoring system (with tire-specific pressure loss warning)
- Road Sign Information (RSI) - Traffic Sign Recognition
- Run-off Road Protection (preventive protection system in case of unintentional road leaving or impending rollovers including pre-activation of the seat belt tensioners, deactivation of the battery (plug-in hybrid only), emergency call via Volvo On Call and door unlocking)
- Safety braking system with disc brakes all around (internally ventilated) (automatic brake system pre-tensioning, brake assist and automatic hold function)
- Seats: Driver and front passenger seats height adjustable (electrically) (including manual tilt adjustment)
- Seats: Lumbar support (2-way adjustable) for driver and front passenger seats
- 12-volt socket at the front
- First aid kit and warning triangle
- Lashing eyes in the luggage compartment (foldable)
- Preparation for Trailer Stability Assist (TSA)
- Immobiliser
- WHIPS whiplash protection system (including immersion protection on all seats and energy-absorbing front seat cushions)
- Central locking with two remote controls and integrated emergency keys (automatic locking of doors while driving (can be deactivated) - comfort opening/closing of side windows and, if applicable, sunroof via remote control - panic function integrated into the remote control)

- Package: Lighting Package (Headlight cleaning system - Full LED headlights "Thor's Hammer" Active High Beam with extended high beam, dynamic cornering lights, intelligent high beam assist with adaptive headlight range control and integrated LED daytime running lights - Ambient lighting Extended ambient lighting (multicoloured) front/rear tailgate Exit lights front/rear illuminated door pockets - openers front/rear illuminated cup holders front Footwell lighting rear Reading lights)
- Park Assist Pilot (Intelligent parking assistant for parallel and perpendicular parking spaces (left and right) as well as exiting parallel parking spaces. Steering is controlled by the assistant, acceleration and braking by the driver. The parking space must be at least 1.2 times the length of the vehicle. - Front and rear parking aid)
- Seats: Heated rear seats (outer seats of the 2nd row)



Brief expert findings

Documents submitted	At the time of the inspection, the vehicle registration certificate Part 2 (title) was available, but the vehicle registration certificate Part 1 (document) was not. (Copy)
VIN comparison	The vehicle identification number (VIN) was read from the vehicle and its conformity with the submitted documents was confirmed by the undersigned during the inspection.
Inspection	The inspection conditions were sufficient for the assessment of the vehicle. Lifting equipment and/or a pit were available for examining the vehicle.
Test drive	No test drive/shunting maneuver was carried out during the inspection of the vehicle.
Engine function test	An engine test run was performed.

Value reducing factors

No.	Component group	Description
1	Equipment	Tirefit filler - Expired - Replace
2	Door - front left side	Door - dent(s) - Smooth repair work
3	Seat - front	Seat cover - left side - Scratch(es) - Smart repair
4	Trim / covers	Door trim - rear right side - Scratch(es) - Smart repair
5	Side panel - rear right side	Sill - Scratch(es) - Smart repair
6	Side panel - rear left side	Sill - Scratch(es) - Smart repair
7	Door - rear right side	Door - Scratch(es) - Smart repair
8	Rear bumper	Rear bumper - Scratch(es) - Smart repair
9	Tail light	Tail lamp - right side - Scratch(es) - Replace
10	Bonnet	Bonnet - Dent / paintcoat damage - Repair and paint
11	Front bumper	Front bumper (Matt und kantig) - Unprofessionally repaired - Repair and paint
12	Side panel - rear left side	Side panel - Scratch(es) - Paint
13	Boot lid / rear door	Boot lid - Scratch(es) - Paint
14	Door - rear left side	Door (Matt) - Unprofessionally repaired - Repair and paint

Repainting

No. Repainting

- 1 Door - rear left side, Unprofessionally carried out, Invoice of repair done Non-existent

Paint coat thickness measurement

Door - rear left side 173 µm |

Order/Scope of Order

An order was placed to prepare a sales report for the described vehicle. This report includes the following:

- Description of key vehicle information
- Documentation of equipment features
(*Delivery by third-party service providers*)
- Documentation of damage, defects, missing parts
- Documentation of prior damage, unrepaired prior damage, repainting
- A brief visual or functional inspection of the equipment details, if possible.
(*Functional testing of driver assistance systems is not included in the scope of services!*)
- a photographic documentation of the vehicle



Basis for the order

This product is based on the guidelines for vehicle returns and valuations published by Alphabet Fleet GmbH. The expert makes the specific findings in each individual case objectively, within the framework of the prescribed standards, based on their own expertise.

The vehicle inspection takes place in a fully assembled, unassembled state.

Damage or defects that can only be detected during disassembly/diagnostic work or through further investigation remain within the realm of prognostic risk. An increased risk exists due to concealed defects caused by fraudulent misrepresentation and which were not identifiable by the expert.

Damage or defects resulting from normal use or wear and tear of the vehicle will be accepted in accordance with the applicable standard.

There was no explicit identification or monetary consideration of the expected features within the product.

Features which, in their nature and extent, slightly exceed normal use but do not constitute unacceptable damage, will be documented and indicated as signs of wear, if applicable.

Damage or defects that, according to the applicable standard, can no longer be attributed to normal use or wear and tear are listed under "Value Reducing Factors" in the product description.

Depending on the product specification, a monetary ID can be provided. If this takes place, the costs can be 100% or pro rata depending on the vehicle's age and mileage.

Previous damages

No apparent prior damage that had been repaired could be found on the vehicle.



Figure 1: Diagonal front (left)



Figure 2: Diagonal front (right)



Figure 3: Diagonal rear (left)



Figure 4: Diagonal rear (right)



Figure 5: Interior - front



Figure 6: Interior - rear



Figure 7: Instrument cluster



Figure 8: Instrument panel



Figure 9: Interior 360° view



Figure 10: Cargo area



Figure 11: VIN



Figure 12: Mounted tyres



Figure 13: Documents



Figure 14: Navigation



Figure 15: Misc.



Figure 16: Misc.

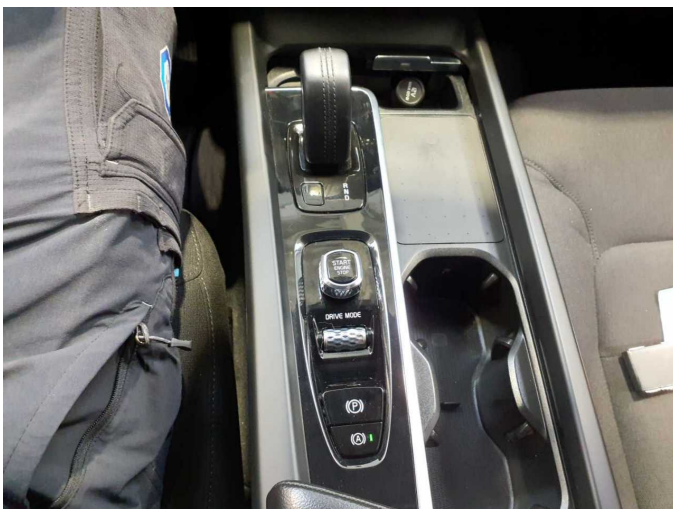


Figure 17: Misc.

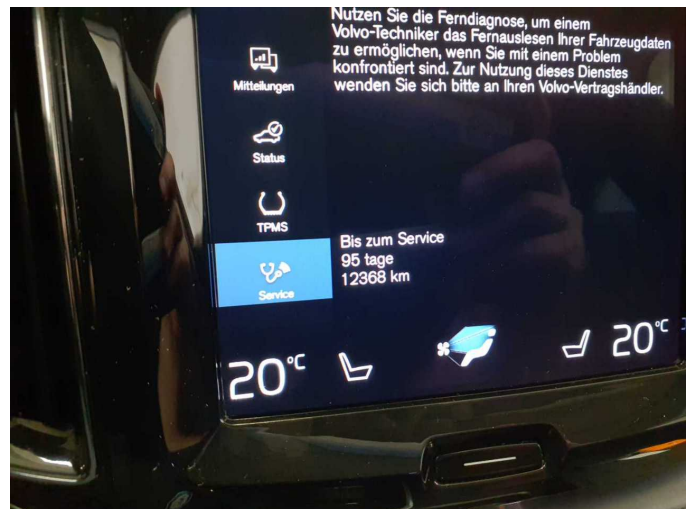


Figure 18: Misc.



Figure 19: Misc.



Figure 20: Misc.

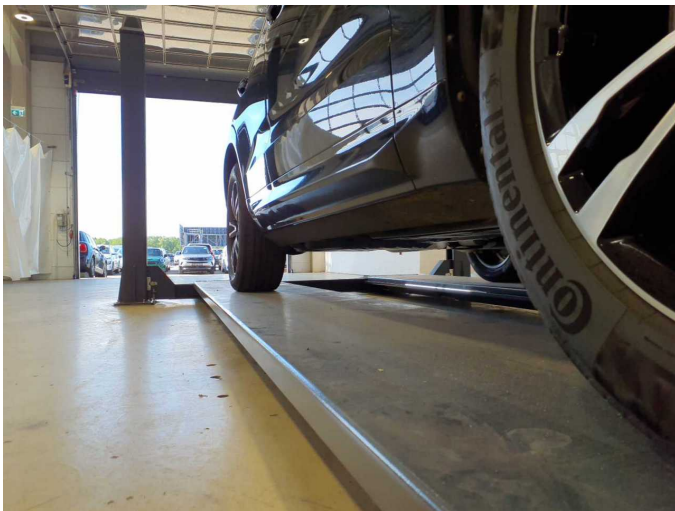


Figure 21: Misc.

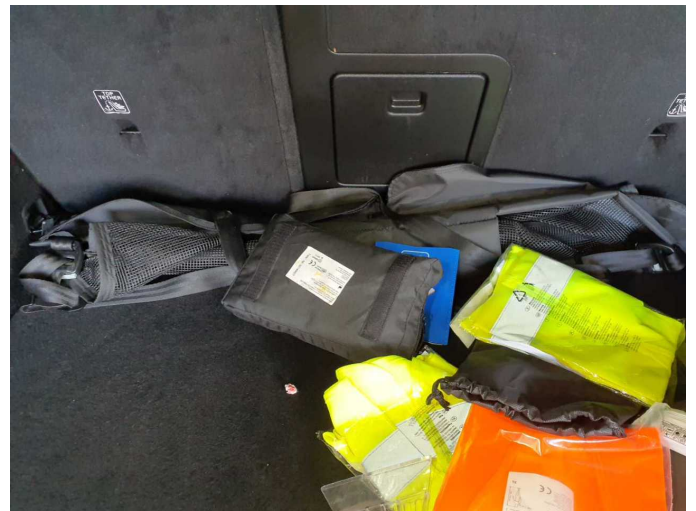


Figure 22: Misc.

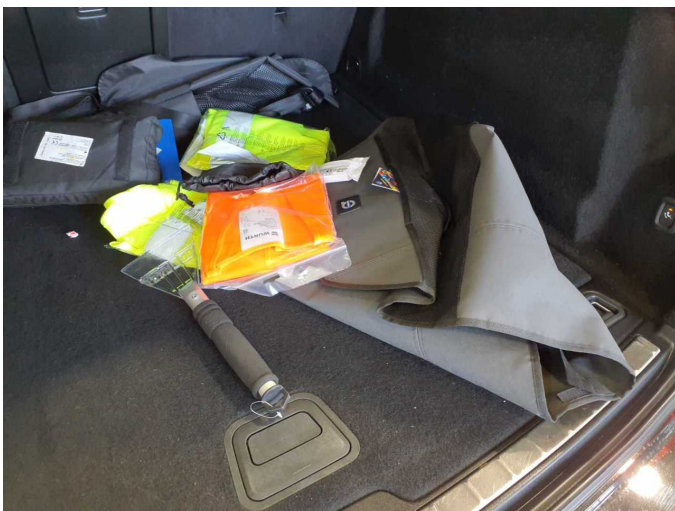


Figure 23: Misc.



Figure 24: Misc.



Figure 25: Misc.



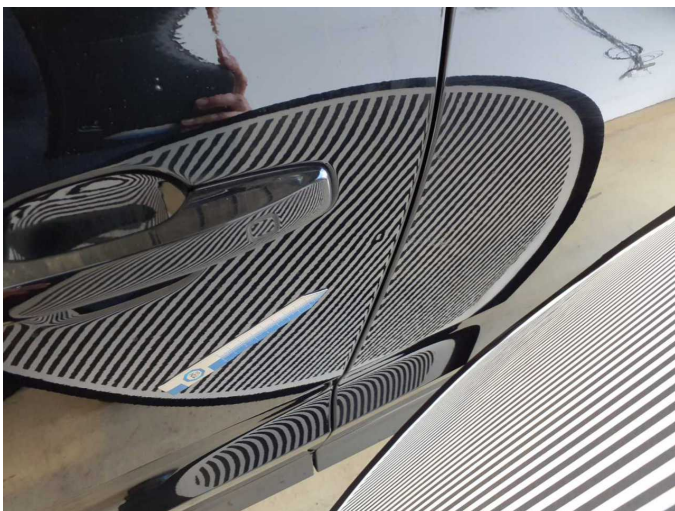
Figure 26: Misc.



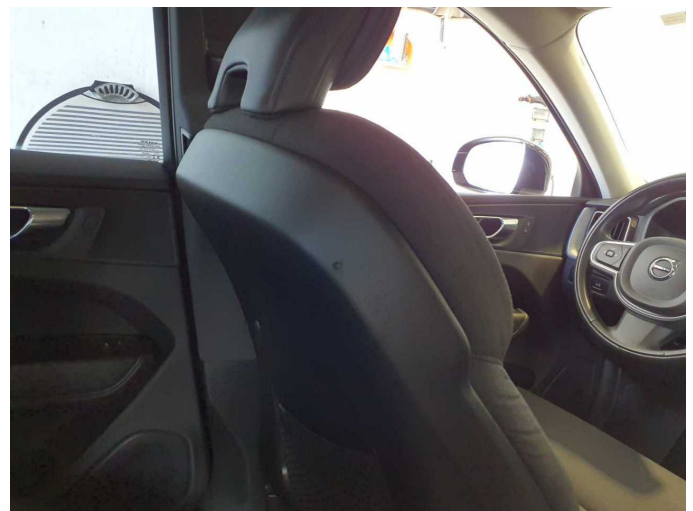
Damage 1: Equipment: Tirefit filler - Expired - Replace



Damage 2: Door - front left side: Door - dent(s) - Smooth repair work



Damage 2: Door - front left side: Door - dent(s) - Smooth repair work



Damage 3: Seat - front: Seat cover - left side - Scratch(es) - Smart repair



Damage 3: Seat - front: Seat cover - left side - Scratch(es) - Smart repair



Damage 4: Trim / covers: Door trim - rear right side - Scratch(es) - Smart repair



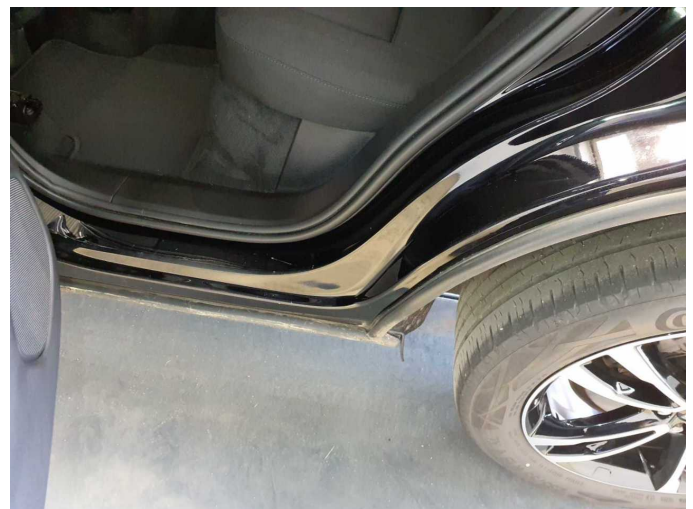
Damage 4: Trim / covers: Door trim - rear right side - Scratch(es) - Smart repair



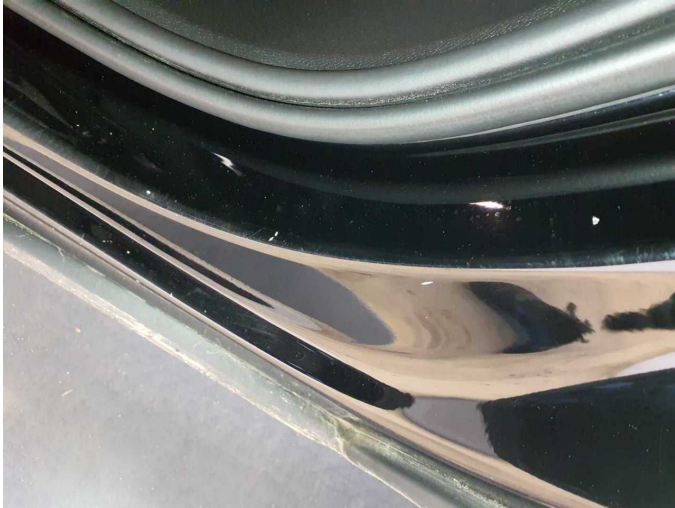
Damage 5: Side panel - rear right side: Sill - Scratch(es) - Smart repair



Damage 5: Side panel - rear right side: Sill - Scratch(es) - Smart repair



Damage 6: Side panel - rear left side: Sill - Scratch(es) - Smart repair



Damage 6: Side panel - rear left side: Sill - Scratch(es) - Smart repair



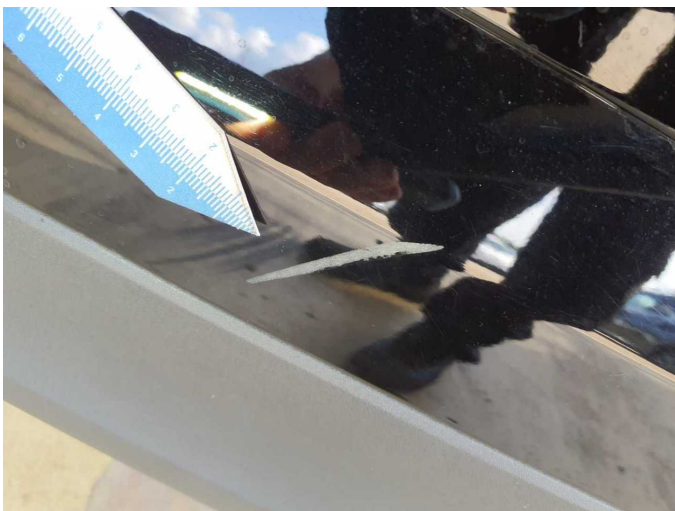
Damage 7: Door - rear right side: Door - Scratch(es) - Smart repair



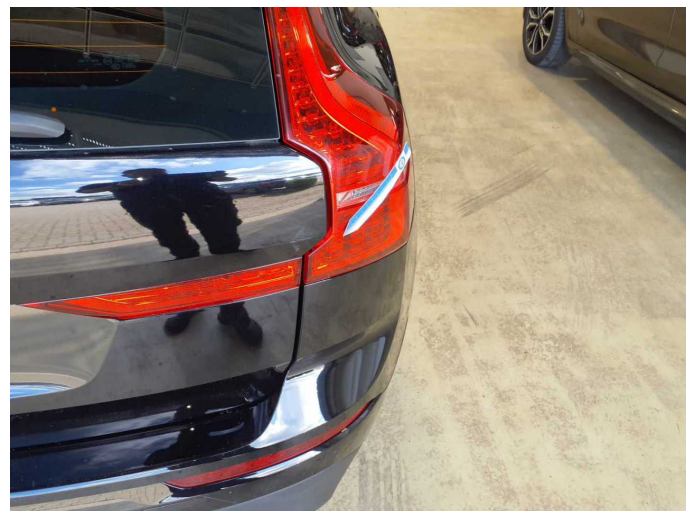
Damage 7: Door - rear right side: Door - Scratch(es) - Smart repair



Damage 8: Rear bumper: Rear bumper - Scratch(es) - Smart repair



Damage 8: Rear bumper: Rear bumper - Scratch(es) - Smart repair



Damage 9: Tail light: Tail lamp - right side - Scratch(es) - Replace



Damage 9: Tail light: Tail lamp - right side - Scratch(es) - Replace



Damage 10: Bonnet: Bonnet - Dent / paintcoat damage - Repair and paint



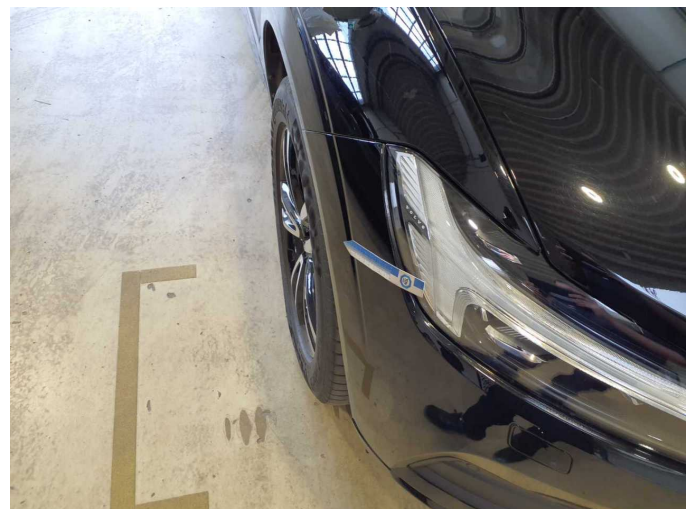
Damage 10: Bonnet: Bonnet - Dent / paintcoat damage - Repair and paint



Damage 10: Bonnet: Bonnet - Dent / paintcoat damage - Repair and paint



Damage 10: Bonnet: Bonnet - Dent / paintcoat damage - Repair and paint



Damage 11: Front bumper: Front bumper (Matt und kantig) - Unprofessionally repaired - Repair and paint



Damage 11: Front bumper: Front bumper (Matt und kantig) - Unprofessionally repaired - Repair and paint



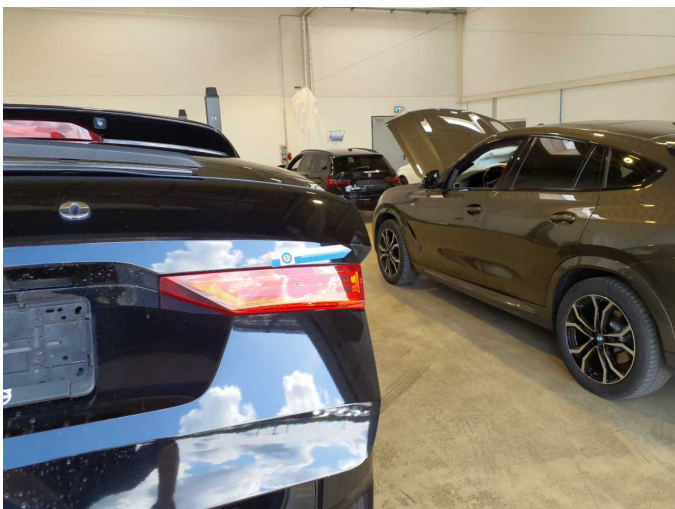
Damage 11: Front bumper: Front bumper (Matt und kantig) - Unprofessionally repaired - Repair and paint



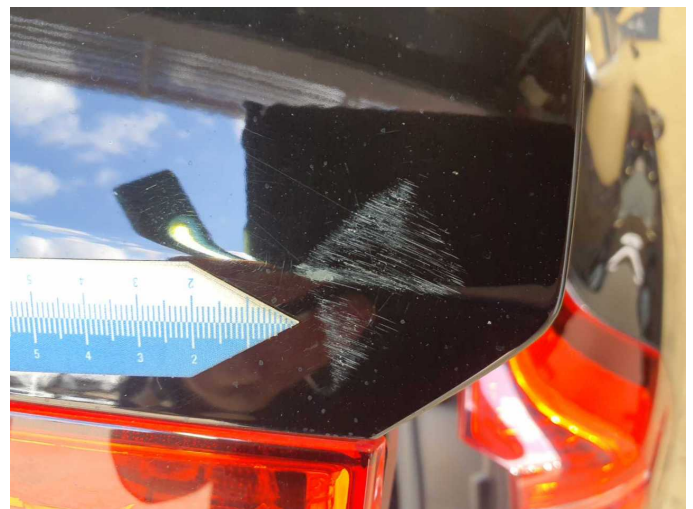
Damage 12: Side panel - rear left side: Side panel - Scratch(es) - Paint



Damage 12: Side panel - rear left side: Side panel - Scratch(es) - Paint



Damage 13: Boot lid / rear door: Boot lid - Scratch(es) - Paint



Damage 13: Boot lid / rear door: Boot lid - Scratch(es) - Paint



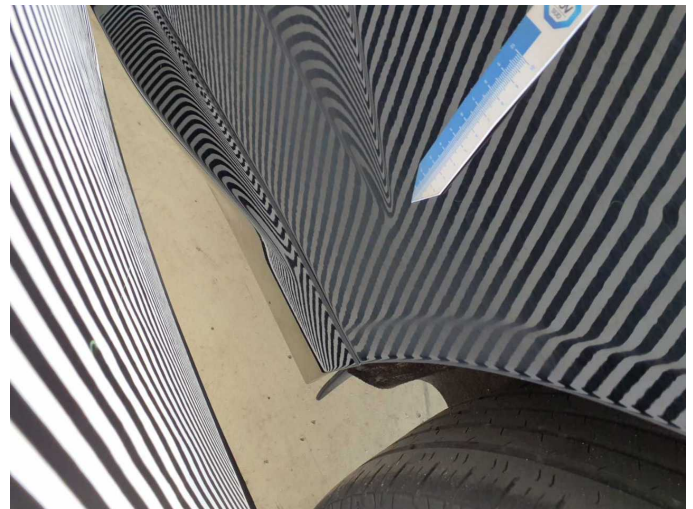
Damage 13: Boot lid / rear door: Boot lid - Scratch(es) - Paint



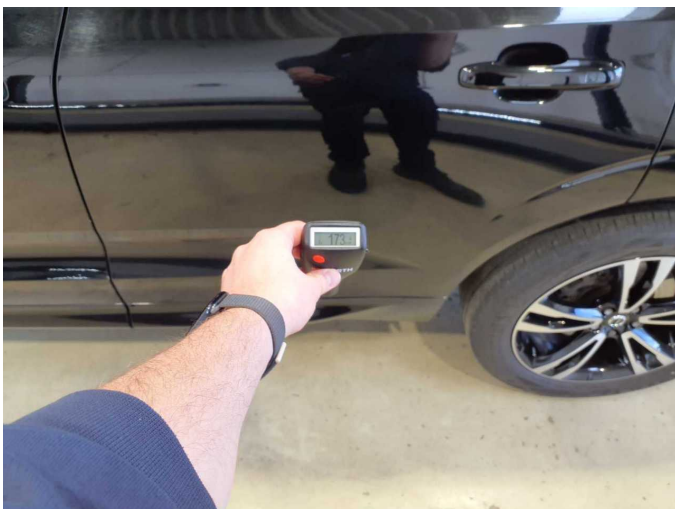
Damage 13: Boot lid / rear door: Boot lid - Scratch(es) - Paint



Damage 14: Door - rear left side: Door (Matt) - Unprofessionally repaired
- Repair and paint



Damage 14: Door - rear left side: Door (Matt) - Unprofessionally repaired
- Repair and paint



Repainting 1: Door - rear left side



Repainting 1: Door - rear left side