

Expertise

Protocol number: 45856279
Order No. / Reference: 26471232
Inspection date: 9 Jun 2026

Manufacturer: Mercedes-Benz

Model: C 200 d T 9G-TRONIC AMG Line Advanced

VIN: W1KAH0DB1RF150837



Vehicle details

Manufacturer / Type / Model / Equipment

Mercedes-Benz C 200 d T 9G-TRONIC AMG Line Advanced

Vehicle Identification number W1KAH0DB1RF150837

Mileage (Read) 153,635 km

First registration 23 Jan 2024

Number of holders 1

Next periodical technical inspection 01/2027

(Report not on hand)

Power / Engine displacement 120 kw / 1,993 ccm

Fuel type / Cylinder Hybrid Diesel / E / 4

Gearbox / Number of gears Automatic / 9

Type of drive Rear drive

Type of vehicle Station wagon

Colour / colour code Graphitgrau Metallic

Doors / Seats 5 / 5

Upholstery type Alcantara / Leather

Colour of upholstery Black



Vehicle details

Maintenance booklet / proof	digital proof / complete	Next maintenance in	286 Tag(e)
Last service on / at	02/2026 at 145,103 km		
Key is / should be	2 / 2	FZG documents	ZB#2 (B) was available (copy), ZB#1 (S) was not available.
		Letter No.	GY573355
Previous damage / Accident	None detectable	Repainting	None detectable
Inspection conditions	sufficient	Lifting equipment / pit	yes
Test drive	Not performed	Engine function test	Performed
Manufacturer key number/ type code number	2222 / BDF 00347		
Emission standard	EURO6;WLTP;EA;PI/CI;M, N1, N2	fine dust sticker	
Permitted total weight	2,400 kg	Empty weight	

Tyres

Mounted tyres

#	Tyre size	Type of tyre	Manufacturer	Tread depth
1)	225/45 R18 95H	Winter tyres on Light alloy	Continental	7mm / 7mm
2)	225/45 R18 95H	Winter tyres on Light alloy	Continental	6mm / 6mm

Additional tyres

#	Tyre size	Type of tyre	Manufacturer	Tread depth
1)	225/45 R18 95Y	Summer tyres on Light alloy	Pirelli	4mm / 4mm
2)	245/40 R18 97Y	Summer tyres on Light alloy	Pirelli	3mm / 3mm

Replacement

Typ	Tyre size	Type of tyre	Manufacturer	Tread depth
	Tirefit	Expiration date 02/2029		

Legend: Tread depth information for the left tire is listed first, for the right tire it is listed second on the axle in the direction of travel.



Equipment

Standard equipment

- Adaptive Highbeam Assist
- Airbag: Automatic passenger airbag deactivation
- Airbag: Side airbag for driver and front passenger
- Ambient lighting with 64 light colors
- ATTENTION ASSIST
- Basic services
- Brake system with larger brake discs on the front axle
- Diesel particulate filter
- DYNAMIC SELECT
- Electronic Stability Program (ESP)
- Electric windows (4-way)
- Speed Limit Assistant
- rear window wiper
- Instrument panel and door sills in ARTICO man-made leather with a nappa leather look
- Mechanical child safety lock for the rear doors
- Rear headrests (3)
- Fuel tank with larger volume 66 l
- LED High Performance Headlights
- Mercedes-Benz emergency call system
- Center console in high-gloss black
- Package: Storage
- Package: Interior lighting package
- Package: Seating comfort
- Package: USB
- Radio: Extended MBUX functions
- Radio accessories: Digital radio (DAB)
- Radio accessories: Central display
- Tire pressure monitoring system (TPMS)
- Windscreen wipers with rain sensor
- Seats: Heated seats for driver and front passenger
- Lane Keeping Assist, active
- Phone accessories: Smartphone integration
- Cruise control
- Fully digital instrument display
- High-visibility vest for drivers
- Central locking with remote control
- Airbag for driver and front passenger
- Airbag: Center airbag
- Airbag: Windowbag for driver and front passenger
- AMG floor mats
- Left and right exterior mirrors are heated and electrically adjustable
- Brake assist, active
- Double cup holder at the front
- EASY-PACK tailgate
- Driver display
- Fingerprint scanner
- Transmission: 9-speed automatic, 9G-TRONIC
- Heated rear window
- ISOFIX child seat attachment with top tether in the rear
- KEYLESS-GO start function
- THERMATIC automatic climate control with 2 climate zones
- Front headrests
- Cargo area cover including EASY-PACK safety net
- Steering wheel: Multifunction sports steering wheel in Nappa leather
- Navigation: MBUX Navigation Premium
- Package: AMG Line Advanced
- Package: Trunk Comfort
- Package: Mirror package
- Upholstery: ARTICO leatherette/MICROCUT microfiber
- Radio: MBUX multimedia system
- Radio accessories: Communication module (LTE) for using Mercedes me connect services
- Remote Services
- Power steering
- Seats: Rear seat backrests foldable
- Phone accessories: Wireless charging system for mobile devices
- TIREFIT with tire inflation compressor
- Pre-installation for digital key handover
- Electronic immobilizer



Extra equipment

- Chassis: Sport chassis with sport direct steering
- Package: Parking package with 360° camera (12 ultrasonic sensors: six each in the front and rear bumpers - 360° camera - Active Parking Assist with PARKTRONIC: detects parking spaces, assisted parking, assisted exiting, visual and acoustic warning of detected obstacles according to distance and position, display of camera and ultrasonic data in the central display, button for Active Parking Assist with PARKTRONIC - cross traffic warning - maneuvering braking - drive-away assist)
- Paint finish: Metallic
- Active Distance Assist DISTRONIC
- Black fabric headliner
- Package: AMG Line Premium (electrically adjustable driver's seat with memory function - Blind Spot Assist - Illuminated door sills with "Mercedes-Benz" lettering - Traffic Sign Assist - DIGITAL LIGHT - Parking Package with 360° camera - MBUX Augmented Reality for navigation - KEYLESS-GO Comfort Package)
- Towbar with ESP trailer stabilization
- Type designation removed from trunk lid

Brief expert findings

Documents submitted	At the time of the inspection, the vehicle registration certificate Part 2 (title) was available, but the vehicle registration certificate Part 1 (document) was not. (Copy)
VIN comparison	The vehicle identification number (VIN) was read from the vehicle and its conformity with the submitted documents was confirmed by the undersigned during the inspection.
Inspection	The inspection conditions were sufficient for the assessment of the vehicle. Lifting equipment and/or a pit were available for examining the vehicle.
Test drive	No test drive/shunting maneuver was carried out during the inspection of the vehicle.
Engine function test	An engine test run was performed.

Value reducing factors

No.	Component group	Description
1	Seat - front	Seat adjustment - right side - Broken / torn - Replace
2	Side panel - rear right side	Sill - Scratch(es) - Smart repair
3	Mudguard - left side	Mudguard - left side - Scratch(es) - Smart repair
4	Front bumper	Front bumper - Scratched - Smart repair
5	Bonnet	Bonnet - dent(s) - Smooth repair work
6	Rear bumper	Rear bumper - Scratch(es) - Paint
7	Vehicle glazing	Windscreen (Im Sichtfeld) - Stone chips - repair according to calculation

Wear and tear

No.	Component group	Description
1	2nd wheel set	1 alloy rim - Scratch(es) - No deduction
2	Side panel - rear left side	Side panel - Scratch(es) - No deduction
3	Roof	Roof rail - right side - Stone chips - No deduction
4	Side panel - rear right side	Side panel - Stone chips - No deduction
5	Engine	Engine cowling lower front - Scratched - No deduction
6	Wheel / tyres	Alloy rim - rear right side - Scratch(es) - No deduction

The vehicle shows signs of wear and tear commensurate with its age and use.



Order/Scope of Order

An order was placed to prepare a sales report for the described vehicle. This report includes the following:

- Description of key vehicle information
- Documentation of equipment features
(Delivery by third-party service providers)
- Documentation of damage, defects, missing parts
- Documentation of prior damage, unrepaired prior damage, repainting
- A brief visual or functional inspection of the equipment details, if possible.
(Functional testing of driver assistance systems is not included in the scope of services!)
- a photographic documentation of the vehicle

Basis for the order

This product is based on the guidelines for vehicle returns and valuations published by Alphabet Fleet GmbH. The expert makes the specific findings in each individual case objectively, within the framework of the prescribed standards, based on their own expertise.

The vehicle inspection takes place in a fully assembled, unassembled state.

Damage or defects that can only be detected during disassembly/diagnostic work or through further investigation remain within the realm of prognostic risk. An increased risk exists due to concealed defects caused by fraudulent misrepresentation and which were not identifiable by the expert.

Damage or defects resulting from normal use or wear and tear of the vehicle will be accepted in accordance with the applicable standard.

There was no explicit identification or monetary consideration of the expected features within the product.

Features which, in their nature and extent, slightly exceed normal use but do not constitute unacceptable damage, will be documented and indicated as signs of wear, if applicable.

Damage or defects that, according to the applicable standard, can no longer be attributed to normal use or wear and tear are listed under "Value Reducing Factors" in the product description.

Depending on the product specification, a monetary ID can be provided. If this takes place, the costs can be 100% d or pro rata depending on the vehicle's age and mileage.

Previous damages

No apparent prior damage that had been repaired could be found on the vehicle.

Comments

Die Montierten Räder sind kein Teil der Ausstattung.



Figure 1: Diagonal front (left)



Figure 2: Diagonal front (right)



Figure 3: Diagonal rear (left)



Figure 4: Diagonal rear (right)

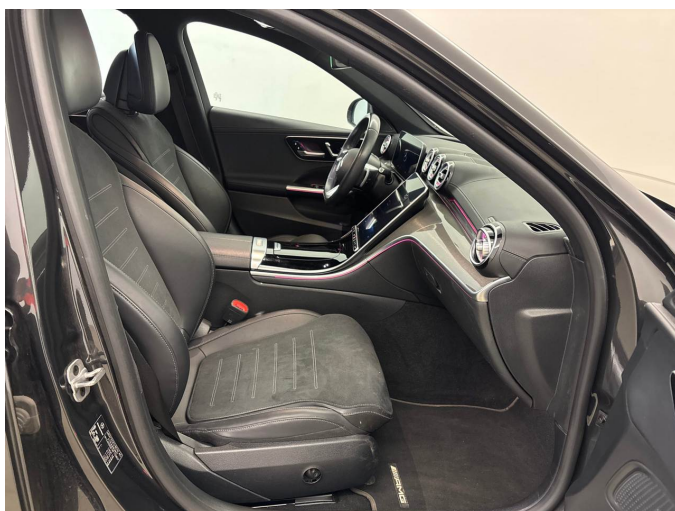


Figure 5: Interior - front



Figure 6: Interior - rear



Figure 7: Instrument cluster



Figure 8: Instrument panel



Figure 9: Interior 360° view



Figure 10: Cargo area

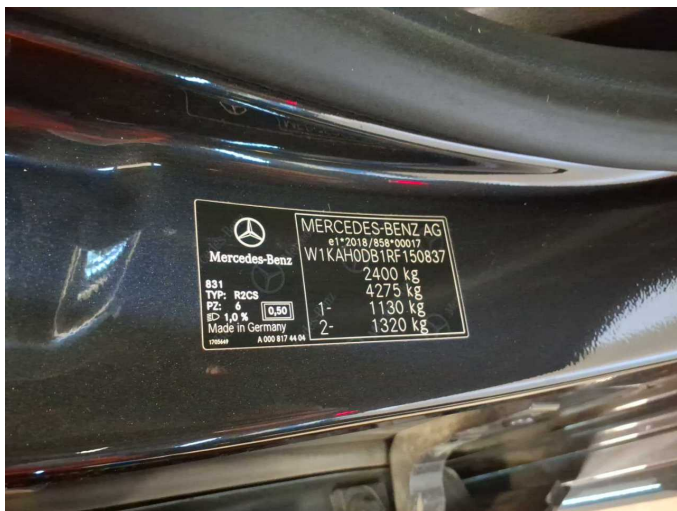


Figure 11: VIN



Figure 12: Mounted tyres



Figure 13: Documents



Figure 14: Documents

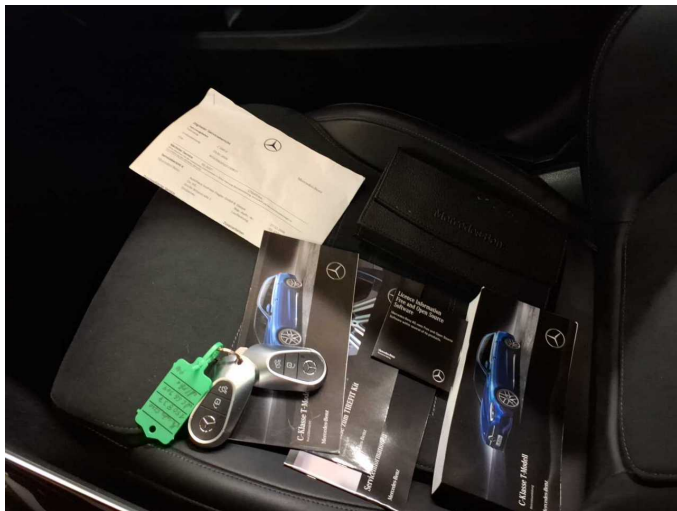


Figure 15: Documents

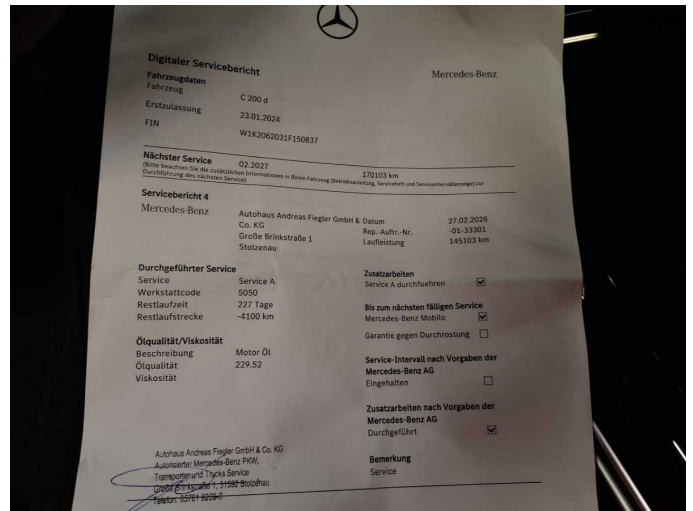


Figure 16: Documents

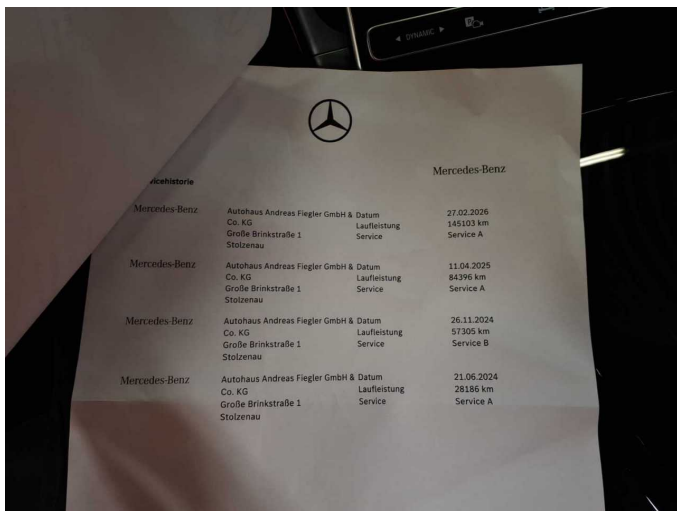


Figure 17: Documents



Figure 18: Additional tyres



Figure 19: Navigation



Figure 20: Misc.



Figure 21: Misc.

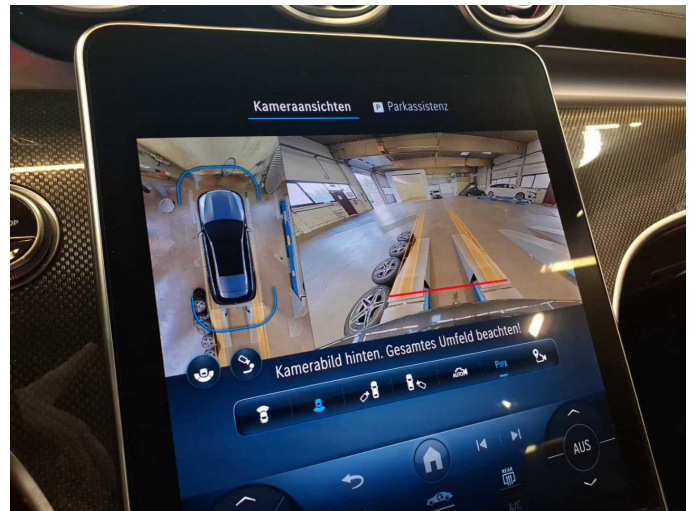


Figure 22: Misc.



Figure 23: Misc.

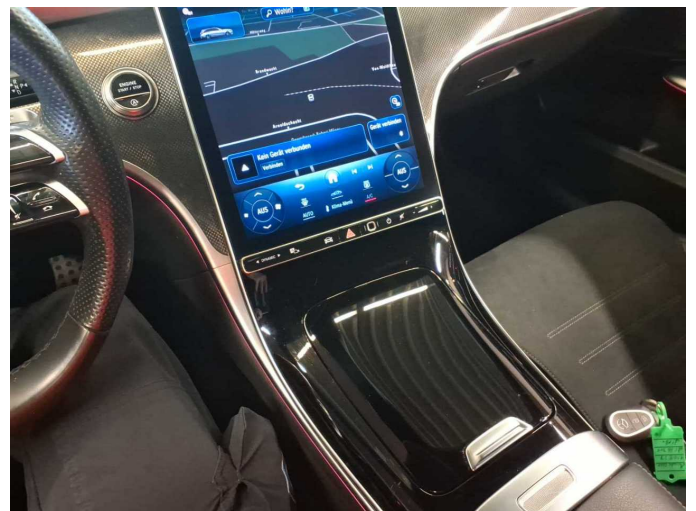


Figure 24: Misc.



Figure 25: Misc.



Figure 26: Misc.

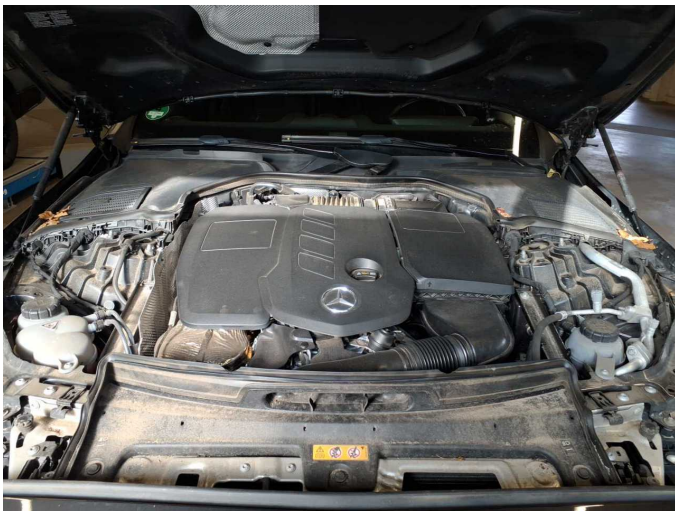


Figure 27: Misc.



Figure 28: Misc.

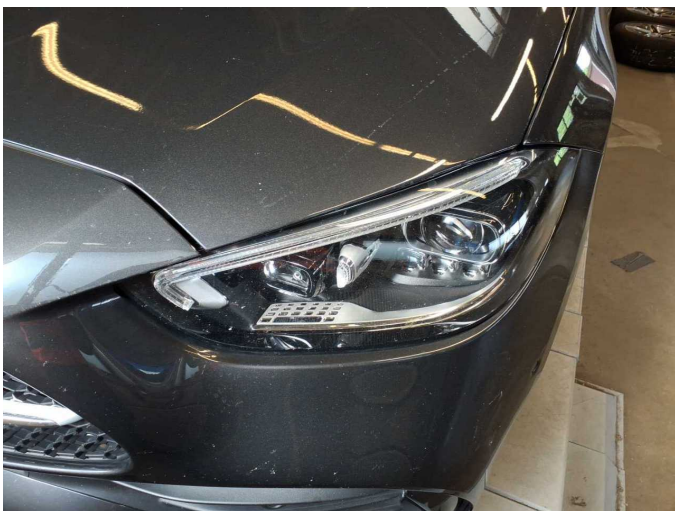


Figure 29: Misc.



Figure 30: Misc.



Figure 31: Misc.



Figure 32: Misc.



Figure 33: Misc.



Figure 34: Misc.



Figure 35: Misc.



Figure 36: Misc.



Figure 37: Misc.



Figure 38: Misc.



Damage 1: Seat - front: Seat adjustment - right side - Broken / torn - Replace



Damage 1: Seat - front: Seat adjustment - right side - Broken / torn - Replace



Damage 2: Side panel - rear right side: Sill - Scratch(es) - Smart repair



Damage 2: Side panel - rear right side: Sill - Scratch(es) - Smart repair



Damage 2: Side panel - rear right side: Sill - Scratch(es) - Smart repair



Damage 2: Side panel - rear right side: Sill - Scratch(es) - Smart repair



Damage 3: Mudguard - left side: Mudguard - left side - Scratch(es) - Smart repair



Damage 3: Mudguard - left side: Mudguard - left side - Scratch(es) - Smart repair



Damage 4: Front bumper: Front bumper - Scratched - Smart repair



Damage 4: Front bumper: Front bumper - Scratched - Smart repair



Damage 4: Front bumper: Front bumper - Scratched - Smart repair



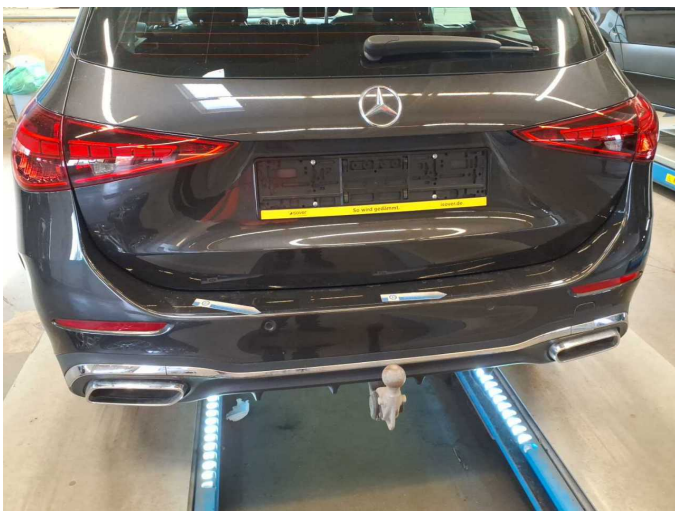
Damage 4: Front bumper: Front bumper - Scratched - Smart repair



Damage 5: Bonnet: Bonnet - dent(s) - Smooth repair work



Damage 5: Bonnet: Bonnet - dent(s) - Smooth repair work



Damage 6: Rear bumper: Rear bumper - Scratch(es) - Paint



Damage 6: Rear bumper: Rear bumper - Scratch(es) - Paint



Damage 6: Rear bumper: Rear bumper - Scratch(es) - Paint



Damage 6: Rear bumper: Rear bumper - Scratch(es) - Paint



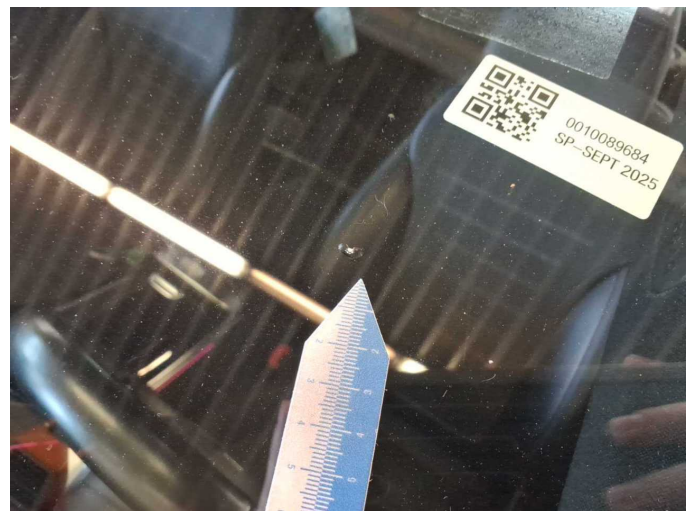
Damage 6: Rear bumper: Rear bumper - Scratch(es) - Paint



Damage 6: Rear bumper: Rear bumper - Scratch(es) - Paint



Damage 7: Vehicle glazing: Windscreen (Im Sichtfeld) - Stone chips - repair according to calculation



Damage 7: Vehicle glazing: Windscreen (Im Sichtfeld) - Stone chips - repair according to calculation



Wartungshistorie

(gemäß Auftraggeber Informationen)

Fahrgestellnummer: W1KAH0DB1RF150837

Hersteller / Modell: MERCEDES-BENZ MERCEDES-BENZ C 200 d T 9G-TRONIC
AMG Line Advanced

Datum	KM-Stand	Beschreibung
17.02.2026	145.103	Regelwartungsdienst
04.11.2025	124.820	Bremsscheiben vorne
05.09.2025	115.224	Regelwartungsdienst
11.04.2025	84.396	Regelwartungsdienst
25.11.2024	57.305	Regelwartungsdienst
21.06.2024	28.186	Regelwartungsdienst