

Expertise

Protocol number: 46060785
Order No. / Reference: 26518872-1
Inspection date: 18 Jun 2026

Manufacturer: Volkswagen

Model: Caddy Cargo 2.0 TDI BMT DSG

VIN: WV1ZZZSK0NX061384



Vehicle details

Manufacturer / Type / Model / Equipment

Volkswagen Caddy Cargo 2.0 TDI BMT DSG

Vehicle Identification number WV1ZZZSK0NX061384

Mileage (Read) 72,615 km

First registration 27 Jul 2022

Number of holders 1

Power / Engine displacement 90 kw / 1,968 ccm

Fuel type / Cylinder Diesel / 4

Gearbox / Number of gears Automatic / 7

Type of drive Front drive

Type of vehicle Van

Colour / colour code Reflexsilber-metallic

Doors / Seats 4 / 2

Upholstery type Cloth

Colour of upholstery Black-Anthracite



Vehicle details

Maintenance booklet / proof	digital proof / complete	Next maintenance in	9,100 km
Last service on / at	11/2025 at 52,530 km		
Key is / should be	2 / 2	FZG documents	ZB#2 (B) was available (copy), ZB#1 (S) was not available.
		Letter No.	GM625052
Previous damage / Accident	Detectable	Repainting	Detectable
Inspection conditions	sufficient	Lifting equipment / pit	yes
Test drive	Not performed	Engine function test	Performed
Manufacturer key number/ type code number	0603 / CME 00521		
Emission standard	EURO6;WLTP;AQ;PI/CI; N1 II	fine dust sticker	
Permitted total weight	2,250 kg	Empty weight	

Tyres

Mounted tyres

#	Tyre size	Type of tyre	Manufacturer	Tread depth
1)	205/60 R16 96H	Summer tyres on Steel rim with wheel cover	Continental	5mm / 5mm
2)	205/60 R16 96H	Summer tyres on Steel rim with wheel cover	Hankook	5mm / 5mm

Additional tyres

#	Tyre size	Type of tyre	Manufacturer	Tread depth
1)	205/60 R16 96H	Winter tyres on Steel	Bridgestone	3mm / 3mm
2)	205/60 R16 96H	Winter tyres on Steel	Bridgestone	6mm / 6mm

Replacement

Typ	Tyre size	Type of tyre	Manufacturer	Tread depth
	Tirefit	Expiration date 04/2026		

Legend: Tread depth information for the left tire is listed first, for the right tire it is listed second on the axle in the direction of travel.



Equipment

Standard equipment

- Storage compartments
- Towing eye front and rear, screw-in
- Exterior mirrors: electrically adjustable
- Reinforced battery (70 Ah/ 420 A)
- Operating voltage 12 V
- Brake booster
- Cockpit panel, matte
- Three-phase generator 140 A
- Electronic parking brake including auto-hold function
- Automatic headlight control with daytime running lights
- Electric windows, front
- Cruise control system including speed limiter
- Halogen dual headlights-H7
- Rear wing door (asymmetrically divided) without window cutout
- Instrument usage (km/h)
- Steering column adjustable in height and tilt
- Headlight range control
- Multifunction display: 16.51 cm (6.5 inch) color touchscreen for convenient operation
- Non-smoking version
- Particulate filter: Soot particle filter for diesel engines
- Wheels, tires: Wheel covers
- Wheels/Tires: Steel wheels 6.5J x 16, in black
- taillights
- Windscreen wiper intermittent control with light sensor
- Keys for locking system: 2 remote control flip keys
- Side indicator lights
- Seatbelt check
- Seats: Seat left and right, in the 1st row
- Start-stop system
- Bumper in grey
- First aid kit, warning triangle and high-visibility vest
- Electronic immobilizer
- Central locking with remote control and interior operation
- Storage compartments: Glove compartment open
- Airbag for driver and front passenger
- Exterior mirror housings and door handles in black, sliding door track in silver
- Floor coverings: Carpet in the driver's cab
- third brake light
- Roof rail/roof rack preparation
- Three-point automatic seat belts
- ESP Electronic Stability Program with Brake Assist
- Windows: Laminated glass front pane in heat-insulating glazing
- Transmission: DSG (dual-clutch transmission), 7-speed automatic
- Heating system with electronic control
- Interior lighting in the cargo area
- Steering wheel: Multifunction leather steering wheel with paddle shifters
- Center console with 2 universal cup holders
- Multi-collision brake
- Fatigue detection
- eCall emergency call system
- Upholstery: Fabric, "Double Grid" design
- Wheels/Tires: 205/60 R 16 96 H XL, optimized for low rolling resistance
- Gearshift lever DSG
- Sliding door, on the right in the passenger/cargo area
- Standard side panels in the cargo area
- Speed-sensitive power steering (Servotronic)
- Seats: Height adjustment for left seat, manual
- Sun visors without mirrors, with ticket pocket on the driver's side, plus airbag label on the sun visor
- Tire Mobility Set
- Lashing points: 6 lashing points for securing cargo
- Green thermal insulation glazing
- Additional dust protection seal on the outside



Extra equipment

- Exterior mirrors, electrically adjustable, heated and folding
- Parking assistance (rear parking distance control)
- Deletion: Lettering on the rear (excluding lettering for type/model designation - excluding promotional lettering and decals)
- Loading platform covering made of wood (multiple-layered plywood, 10 mm thick, non-slip)
- Package: Special Offers - Assistance Package (DSG) (Multifunction camera - Multifunction display "Plus" - Auto-dimming rearview mirror - Three-point automatic front seat belts with height adjustment and electric pretensioners - Side and head airbags for driver and front passenger - Lane Assist - Tire pressure monitoring system - Rear parking sensors - Front Assist - Cruise control including speed limiter)
- Package: Light and Sight (Safety interior mirror, automatically dimming - Windscreen wiper interval control with light and rain sensor - Automatic headlight control, with daytime running lights and welcome and farewell lights)
- Package: Winter package (Seat heating for seats in the driver's cab, left and right, separately adjustable - Washer fluid level indicator with enlarged washer fluid reservoir - Heated windshield washer nozzles at the front)
- Smoker's version (12V socket with cigarette lighter and ashtray)
- Partition wall (high) with windows and grilles
- Exterior mirror housings in black, door handles in body color and sliding door rail in silver
- Interior design
- Interior lighting in the cargo area, 2 LED spotlights
- Paint finish: Metallic
- Navigation system "Discover Media" (25.4 cm (10 inch) touch color display - streaming & internet - 2 USB interfaces (Type C) in the center console, front - glove compartment with lockable, illuminated flap - 4 speakers - mobile phone interface)
- Package: Cool & Sound (Refrigerant R1234yf - Safety interior mirror, automatically dimming - Air Care Climatronic air conditioning with 2-zone temperature control and air purification function)
- Package: Window package (Caddy Cargo with rear wing doors) (Rear wing doors with asymmetrically divided window cutouts - Fixed side window in the load/passenger compartment, front left - Fixed side window in the load/passenger compartment, front right - Fixed side window in the load/passenger compartment, rear left - Heated rear window - Fixed side window in the load/passenger compartment, rear right - Rear window wiper/washer system with intermittent function)
- Radio accessories: Digital radio reception DAB+
- Wheels/Tires: Tire pressure monitoring system
- Seats: Manually adjustable lumbar support, left

Brief expert findings

Documents submitted	At the time of the inspection, the vehicle registration certificate Part 2 (title) was available, but the vehicle registration certificate Part 1 (document) was not. (Copy)
VIN comparison	The vehicle identification number (VIN) was read from the vehicle and its conformity with the submitted documents was confirmed by the undersigned during the inspection.
Inspection	The inspection conditions were sufficient for the assessment of the vehicle. Lifting equipment and/or a pit were available for examining the vehicle.
Test drive	No test drive/shunting maneuver was carried out during the inspection of the vehicle.
Engine function test	An engine test run was performed.

Value reducing factors

No.	Component group	Description
1	Trim / covers	Floor mats - Damaged - Replace
2	Equipment	Tirefit filler - Expired - Replace
3	Boot lid / rear door	Rear door - left side - Scratch(es) - Smart repair
4	Body	Body - Glued / labelled - De-glue / neutralise



Wear and tear

No.	Component group	Description
1	Front bumper	Front bumper (unpainted) - Scratched - No deduction
2	Rear bumper	Rear bumper (unpainted) - Scratch(es) - No deduction
3	Bonnet	Bonnet - Stone chips - No deduction
4	Vehicle glazing	Windscreen - Stone chips - No deduction
5	Interior	Interior - Scratch(es) - No deduction

The vehicle shows signs of wear and tear commensurate with its age and use.

Previous damages

No.	Previous damage	Extent of damage (Net)
1	Side - left, Provided by user / customer, from 25 Feb 2025	2.192,30 €
2	Side right, Provided by user / customer, from 11 Aug 2025	6.474,22 €

Repainting

No.	Repainting
1	Side panel - rear left side, Side panel - rear right side, Door - front right side, Professionally carried out, Invoice of repair done Non-existent

Paint coat thickness measurement

Side panel - rear left side	344 µm	Side panel - rear right side	1,006 µm
Door - front right side	363 µm		

Order/Scope of Order

An order was placed to prepare a sales report for the described vehicle. This report includes the following:

- Description of key vehicle information
- Documentation of equipment features
(Delivery by third-party service providers)
- Documentation of damage, defects, missing parts
- Documentation of prior damage, unrepaired prior damage, repainting
- A brief visual or functional inspection of the equipment details, if possible.
(Functional testing of driver assistance systems is not included in the scope of services!)
- a photographic documentation of the vehicle



Basis for the order

This product is based on the guidelines for vehicle returns and valuations of light commercial vehicles published by Alphabet Fleet Management GmbH. The expert makes the specific findings in each individual case objectively, within the framework of the prescribed standards, based on their own expertise.

The vehicle inspection takes place in a fully assembled, unassembled state.

Damage or defects that can only be detected during disassembly/diagnostic work or through further investigation remain within the realm of prognostic risk. An increased risk exists due to concealed defects caused by fraudulent misrepresentation and which were not identifiable by the expert.

Damage or defects resulting from normal use or wear and tear of the vehicle will be accepted in accordance with the applicable standard.

There was no explicit identification or monetary consideration of the expected features within the product.

Features which, in their nature and extent, slightly exceed normal use but do not constitute unacceptable damage, will be documented and indicated as signs of wear, if applicable.

Damage or defects that, according to the applicable standard, can no longer be attributed to normal use or wear and tear are listed under "Value Reducing Factors" in the product description.

Depending on the product specification, a monetary ID can be provided. If this takes place, the costs can be 100% d or pro rata depending on the vehicle's age and mileage.

Previous damages

According to available information previous damages were repaired at the vehicle. Traces of repairs, which allow conclusions about the area of repair, were not recognizable during the inspection.

Comments

Wartungshistorie gemäß Auftraggeber Informationen.

- Winterradsatz ist kein Bestandteil des Auslieferungsumfangs.



Figure 1: Diagonal front (left)



Figure 2: Diagonal front (right)



Figure 3: Diagonal rear (left)



Figure 4: Diagonal rear (right)



Figure 5: Interior - front



Figure 6: Interior - rear



Figure 7: Instrument cluster



Figure 8: Instrument cluster



Figure 9: Instrument panel



Figure 10: Interior 360° view

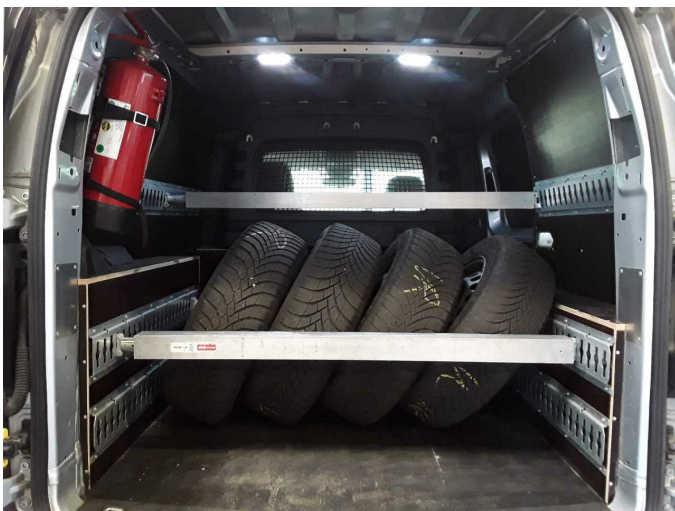


Figure 11: Cargo area

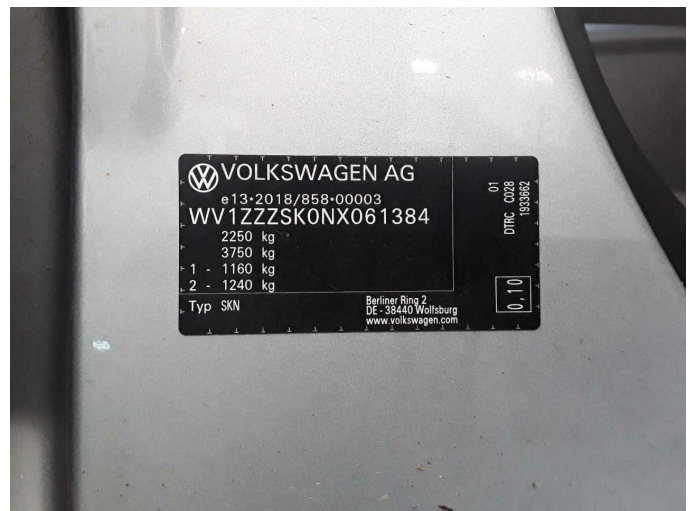


Figure 12: VIN



Figure 13: Mounted tyres



Figure 14: Documents



Figure 15: Additional tyres

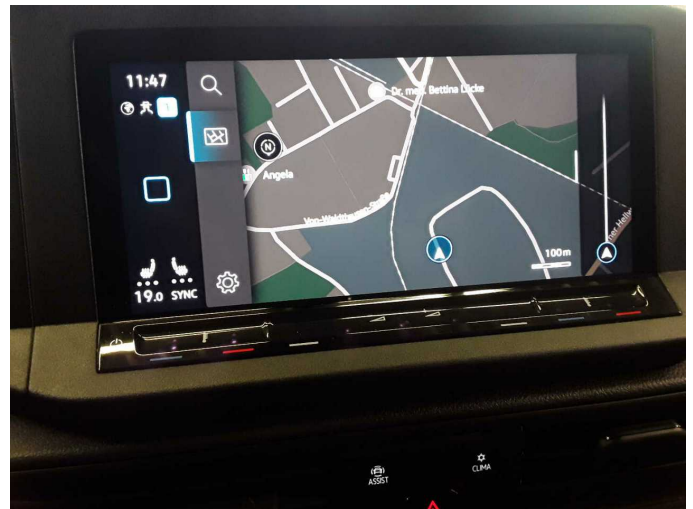


Figure 16: Navigation

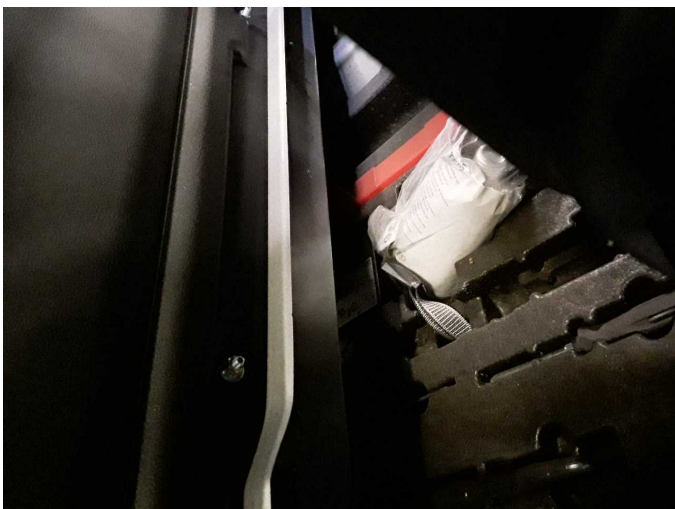


Figure 17: Misc.



Figure 18: Misc.



Figure 19: Misc.



Figure 20: Misc.



Figure 21: Misc.



Figure 22: Misc.



Figure 23: Misc.



Figure 24: Misc.



Figure 25: Misc.



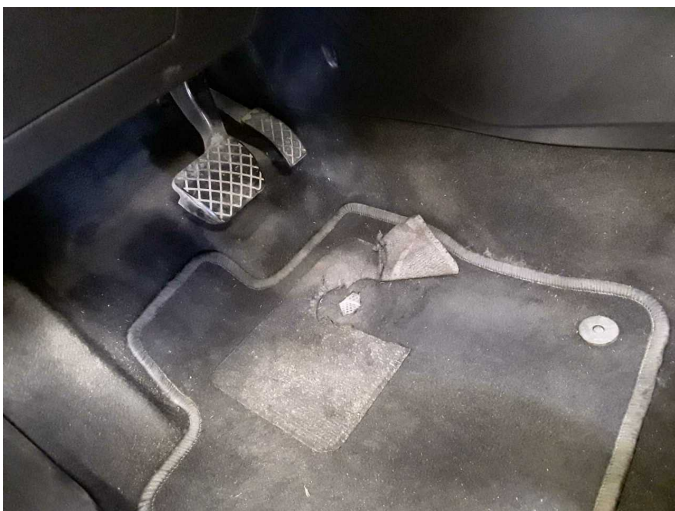
Figure 26: Misc.



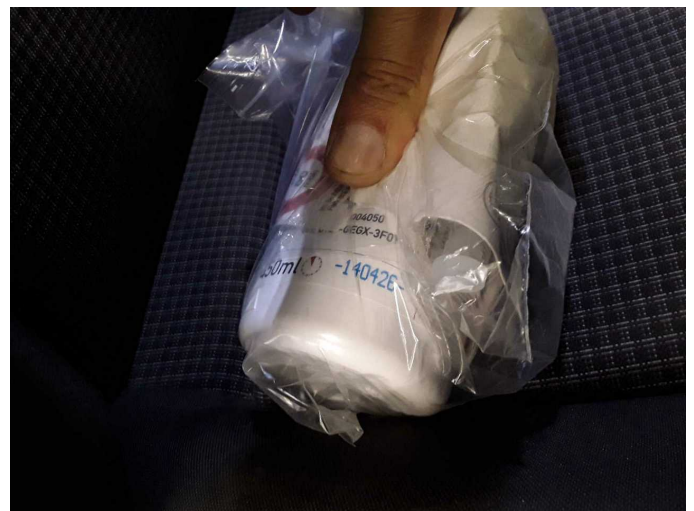
Figure 27: Misc.



Damage 1: Trim / covers: Floor mats - Damaged - Replace



Damage 1: Trim / covers: Floor mats - Damaged - Replace



Damage 2: Equipment: Tirefit filler - Expired - Replace



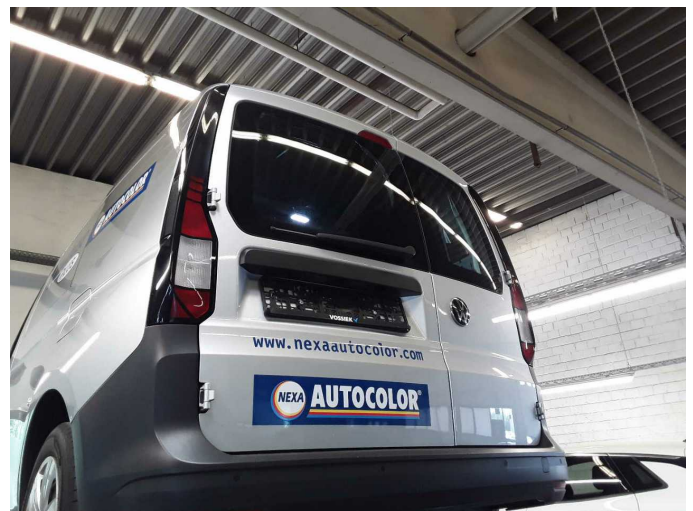
Damage 3: Boot lid / rear door: Rear door - left side - Scratch(es) - Smart repair



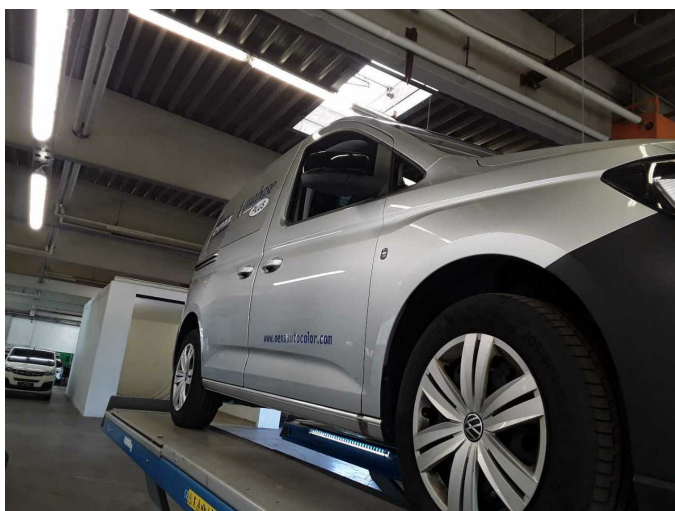
Damage 3: Boot lid / rear door: Rear door - left side - Scratch(es) - Smart repair



Damage 4: Body: Body - Glued / labelled - De-glug / neutralise



Damage 4: Body: Body - Glued / labelled - De-glug / neutralise



Damage 4: Body: Body - Glued / labelled - De-glug / neutralise



Wear and tear 1: Front bumper: Front bumper (unpainted) - Scratched - No deduction



Wear and tear 1: Front bumper: Front bumper (unpainted) - Scratched - No deduction



Wear and tear 1: Front bumper: Front bumper (unpainted) - Scratched - No deduction



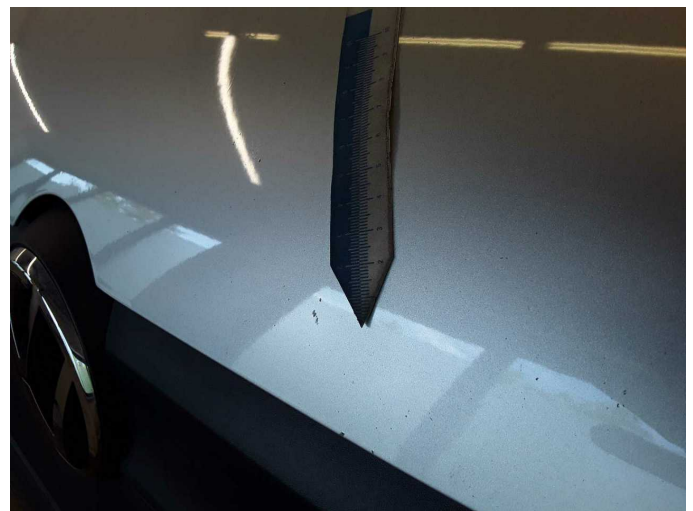
Wear and tear 2: Rear bumper: Rear bumper (unpainted) - Scratch(es) - No deduction



Wear and tear 2: Rear bumper: Rear bumper (unpainted) - Scratch(es) - No deduction



Wear and tear 3: Bonnet: Bonnet - Stone chips - No deduction



Wear and tear 3: Bonnet: Bonnet - Stone chips - No deduction



Wear and tear 4: Vehicle glazing: Windscreen - Stone chips - No deduction



Wear and tear 4: Vehicle glazing: Windscreen - Stone chips - No deduction



Repainting 1: Side panel - rear left side, Side panel - rear right side, Door - front right side



Repainting 1: Side panel - rear left side, Side panel - rear right side, Door - front right side



Repainting 1: Side panel - rear left side, Side panel - rear right side, Door - front right side



Repainting 1: Side panel - rear left side, Side panel - rear right side, Door - front right side



Repainting 1: Side panel - rear left side, Side panel - rear right side,
Door - front right side



Repainting 1: Side panel - rear left side, Side panel - rear right side,
Door - front right side