

Expertise

Protocol number: 46054141
Order No. / Reference: 26482494
Inspection date: 18 Jun 2026

Manufacturer: Seat

Model: Cupra Born 150kW/58kWh

VIN: VSSZZK14RP024621



Vehicle details

Manufacturer / Type / Model / Equipment

Seat Cupra Born 150kW/58kWh

Vehicle Identification number VSSZZK14RP024621

Mileage (Read) 10,995 km

First registration 23 May 2024

Number of holders 1

Power / Engine displacement 70 kw /

Fuel type / Cylinder Electric / 1

Gearbox / Number of gears Automatic / 1

Type of drive Rear drive

Type of vehicle Station wagon

Colour / colour code Pebble Grey (A7C)

Doors / Seats 5 / 5

Upholstery type Cloth

Colour of upholstery Anthracite-Grey



Vehicle details

Maintenance booklet / proof	Non-existent	Next maintenance in	701 Tag(e)
Key is / should be	2 / 2	FZG documents	ZB#2 (B) was available (copy), ZB#1 (S) was not available.
		Letter No.	GY951743
Previous damage / Accident	None detectable	Repainting	None detectable
Inspection conditions	sufficient	Lifting equipment / pit	No
Test drive	Not performed	Engine function test	Performed
Manufacturer key number/ type code number	7593 / ASO 00002		
Emission standard	2017/1151;WLTP;reine Elektrofz	fine dust sticker	
Permitted total weight	2,260 kg	Empty weight	

Tyres

Mounted tyres

#	Tyre size	Type of tyre	Manufacturer	Tread depth
1)	215/55 R18 95T	Summer tyres on Light alloy	Continental	6mm / 6mm
2)	215/55 R18 95T	Summer tyres on Light alloy	Continental	6mm / 6mm

Replacement

Typ	Tyre size	Type of tyre	Manufacturer	Tread depth
	Tirefit	Expiration date 02/2028		

Legend: Tread depth information for the left tire is listed first, for the right tire it is listed second on the axle in the direction of travel.

TÜV SÜD Auto Partner GmbH
Wiesenring 2
04159 Leipzig

Inspection location
Hartmann Fleet Professionals GmbH
Leerenstraße 25
29683 Bad Fallingbommel



Equipment



Standard equipment

- Airbag: Airbag for driver and front passenger (center airbag - side airbags for driver and front passenger)
- Ambient lighting in the front door trim (including footwell lighting)
- Electrically adjustable, folding and heated exterior mirrors (including passenger-side mirror lowering function)
- C-pillar with CUPRA design element
- CUPRA Drive Profile (driving profiles can be individually selected - Range, Comfort, Performance, Individual)
- CUPRA lettering on tailgate
- Black headliner
- Electronic parking brake including auto-hold function
- Electronic Stability Control (ESC) (Anti-lock Braking System (ABS) - Traction Control System (ASR))
- Electric windows front and rear, with anti-pinch protection and one-touch function
- Transmission: 1-speed automatic
- Rear spoiler in car color
- Manufacturer's warranty: 5 years or up to 150,000 km
- High-voltage battery warranty 8 years or maximum 160,000 km, with 70% Abattery power
- Keyless Go (engine start/stop button)
- Air conditioning: Climatronic with electronic temperature control (separate for driver and front passenger, with stationary air conditioning)
- Paint finish: Solid
- Steering wheel: CUPRA Supersport multifunction steering wheel in leather (heated)
- Front center armrest (in Dinamica Granite Grey, front, made from recycled materials)
- Center console with integrated storage compartment and cup holder (including roller shutter, in black)
- Fatigue detection
- Emergency call service (no registration required - service is activated upon delivery)
- Rain sensor
- Tire pressure monitoring system
- Wheels: CYCLONE 7.5J x 18" alloy wheels (tires 215/55 R 18 with Tyre Fit)
- Windscreen wiper interval control
- Seat belts - front and rear (warning buzzer and warning light for unfastened seat belts)
- Seats: 3 rear seats, rear seat backrest asymmetrically split and foldable
- Seats: Driver's seat with height adjustment
- Sport pedals in aluminum look
- 12V socket in the luggage compartment
- Ultrasonic parking aid front and rear
- Front Assist area monitoring system with City Emergency Braking function
- Airbag: Passenger airbag deactivation
- Airbag: Head airbag system, front and rear
- Exterior mirrors: aspherical on driver's side, convex on passenger's side
- Exterior mirror housing in Liquid Grey
- third brake light
- CCS charging socket
- CUPRA e-Sound (AVAS Acoustic Vehicle Alert System, acoustic vehicle warning system) from 0-50 km/h
- CUPRA side skirts in Liquid Grey
- Decorative elements (decorative element on instrument panel Black, decorative stitching in Copper - decorative inlay in front doors, Dinamica Granite Grey, made from recycled materials - decorative elements in Copper)
- Luggage compartment lighting
- Speed limiter
- rear window wiper
- Rear bumper and diffuser in body color (with Liquid Grey accents)
- Interior mirror automatically dimming
- ISOFIX child seat restraint system, in the 2nd row left and right as well as on the front passenger seat (i-Size compatible - incl. top tether anchor points at the rear)
- Headrests, 2 front
- Headrests, 3 rear
- Mode 3 Type 2 charging cable, 16 A
- Lights: Full headlights (full LED headlights with light sensor and automatic headlight control, cornering light function and bad weather light - full LED taillights with Infinite Light; dynamic LED light strip at the rear - turn signals with LED technology integrated into exterior mirrors including welcome light projection under the exterior mirrors - Ceremony Light)
- Progressive steering
- Radio: Radio and multimedia systems (2 USB-C charging ports for the 2nd row of seats - 7 speakers - Virtual Cockpit-5, 3" fully digital instrument cluster - antenna for FM reception - Bluetooth interface with integrated hands-free system and audio streaming - Android Auto, Apple CarPlay incl. Full Link Wireless - 2 USB-C ports in the front - DAB+ - infotainment system with 12" color touchscreen - voice control - CUPRA CONNECT)
- Seats: CUPRA front sport bucket seats (made of SEAQUAL Yarn fabric, Black)
- Sun visors with illuminated makeup mirror
- Lane departure warning system
- Front bumper in body color (with air intakes in Liquid Grey and trim in Copper)
- Electronic immobilizer
- thermal insulation glazing



Brief expert findings

Documents submitted	At the time of the inspection, the vehicle registration certificate Part 2 (title) was available, but the vehicle registration certificate Part 1 (document) was not. (Copy)
VIN comparison	The vehicle identification number (VIN) was read from the vehicle and its conformity with the submitted documents was confirmed by the undersigned during the inspection.
Inspection	The inspection conditions were sufficient for the assessment of the vehicle. No lifting equipment or pit was available for inspecting the vehicle. Therefore, inspection of the vehicle's underside was only possible to a limited extent.
Test drive	No test drive/shunting maneuver was carried out during the inspection of the vehicle.
Engine function test	An engine test run was performed.

Value reducing factors

No.	Component group	Description
1	Misc.	Main inspection - No evidence - No deduction
2	Misc.	Inspection / maintenance - No evidence - No deduction
3	Roof	Roof - dent(s) - Smooth repair work
4	Rear bumper	Rear bumper - Scratch(es) - Smart repair
5	Sill - right side	Sill - Scratch(es) - Smart repair
6	Fuel system	Tank cap - Scratch(es) - Smart repair
7	Body	C-pillar - left side - Scratch(es) - Smart repair
8	Wing mirror - right side	Cap - Scratch(es) - Paint
9	Wheel / tyres	Tyre - front right side - Damaged - Replace
10	Door - rear right side	Door - Scratch(es) - Smart repair
11	Wheel / tyres	Alloy rim - front right side - Scratch(es) - Loss in value
12	Front bumper	Spoiler - Scratch(es) - Paint

Wear and tear

No.	Component group	Description
1	Vehicle glazing	Windscreen - Stone chips - No deduction
2	Bonnet	Bonnet - Stone chips - No deduction
3	Front bumper	Front bumper - Stone chips - No deduction

The vehicle shows signs of wear and tear commensurate with its age and use.

Order/Scope of Order

An order was placed to prepare a sales report for the described vehicle. This report includes the following:

- Description of key vehicle information
- Documentation of equipment features
(*Delivery by third-party service providers*)
- Documentation of damage, defects, missing parts
- Documentation of prior damage, unrepaired prior damage, repainting
- A brief visual or functional inspection of the equipment details, if possible.
(*Functional testing of driver assistance systems is not included in the scope of services!*)
- a photographic documentation of the vehicle



Basis for the order

This product is based on the guidelines for vehicle returns and valuations published by Alphabet Fleet GmbH. The expert makes the specific findings in each individual case objectively, within the framework of the prescribed standards, based on their own expertise.

The vehicle inspection takes place in a fully assembled, unassembled state.

Damage or defects that can only be detected during disassembly/diagnostic work or through further investigation remain within the realm of prognostic risk. An increased risk exists due to concealed defects caused by fraudulent misrepresentation and which were not identifiable by the expert.

Damage or defects resulting from normal use or wear and tear of the vehicle will be accepted in accordance with the applicable standard.

There was no explicit identification or monetary consideration of the expected features within the product.

Features which, in their nature and extent, slightly exceed normal use but do not constitute unacceptable damage, will be documented and indicated as signs of wear, if applicable.

Damage or defects that, according to the applicable standard, can no longer be attributed to normal use or wear and tear are listed under "Value Reducing Factors" in the product description.

Depending on the product specification, a monetary ID can be provided. If this takes place, the costs can be 100% d or pro rata depending on the vehicle's age and mileage.

Previous damages

No apparent prior damage that had been repaired could be found on the vehicle.



Figure 1: Diagonal front (left)



Figure 2: Diagonal front (right)



Figure 3: Diagonal rear (left)



Figure 4: Diagonal rear (right)



Figure 5: Interior - front



Figure 6: Interior - rear



Figure 7: Instrument cluster



Figure 8: Instrument panel



Figure 9: Interior 360° view



Figure 10: Cargo area



Figure 11: VIN



Figure 12: Mounted tyres



Figure 13: Documents

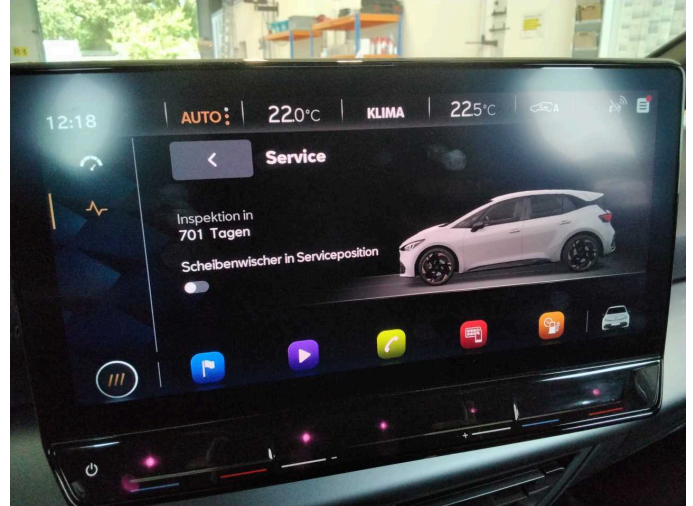


Figure 14: Misc.

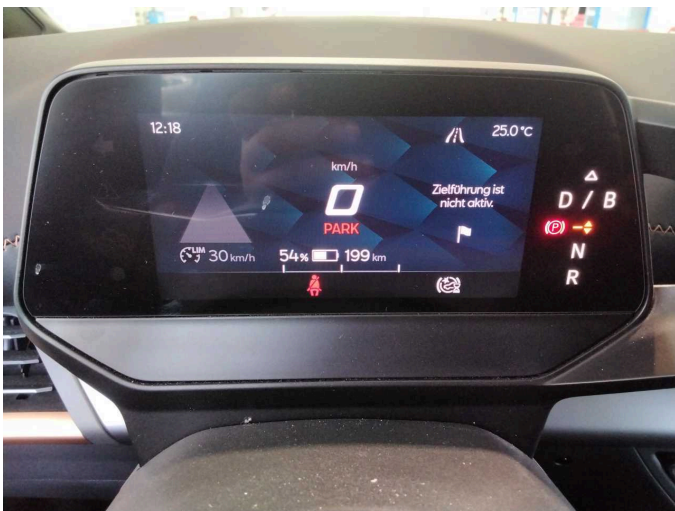


Figure 15: Misc.



Figure 16: Misc.

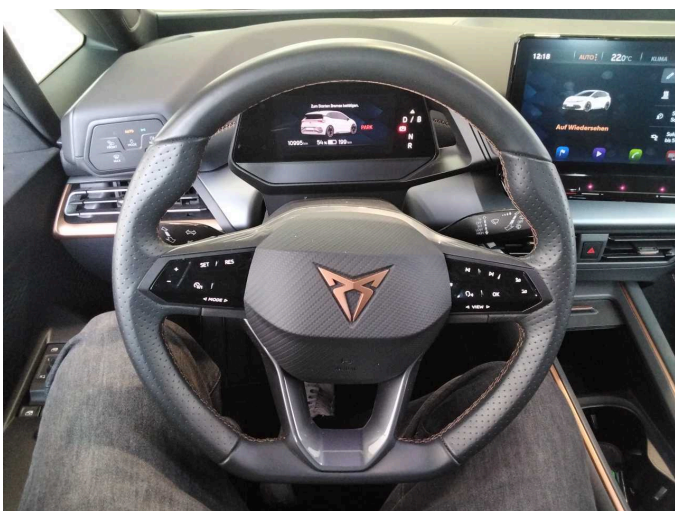


Figure 17: Misc.



Figure 18: Misc.



Figure 19: Misc.



Figure 20: Misc.



Figure 21: Misc.



Figure 22: Misc.



Figure 23: Misc.

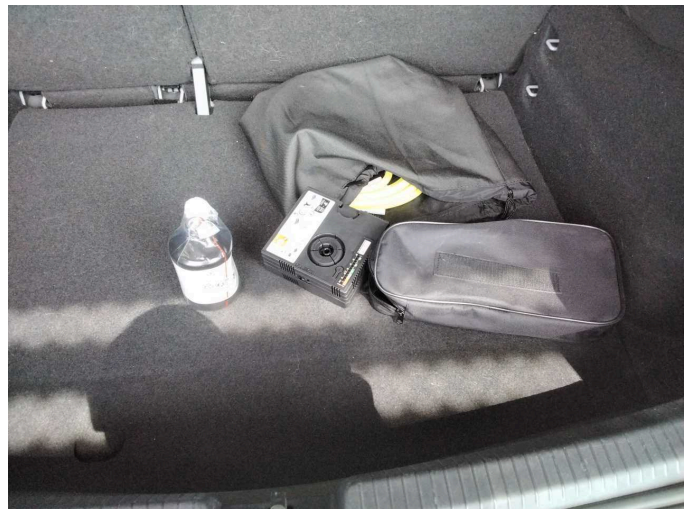


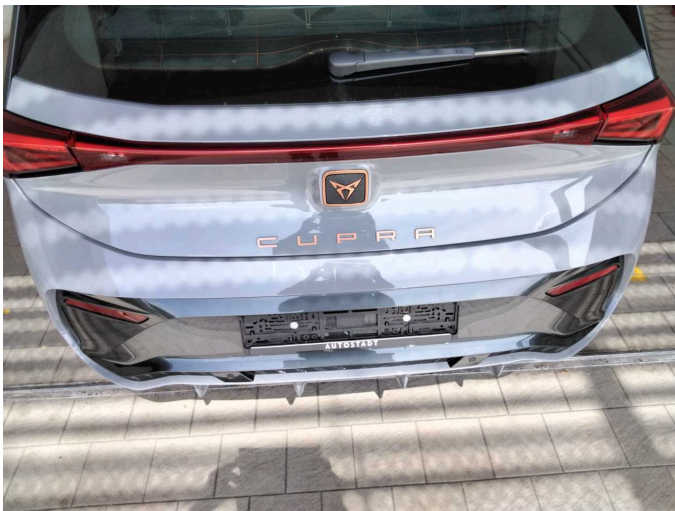
Figure 24: Misc.



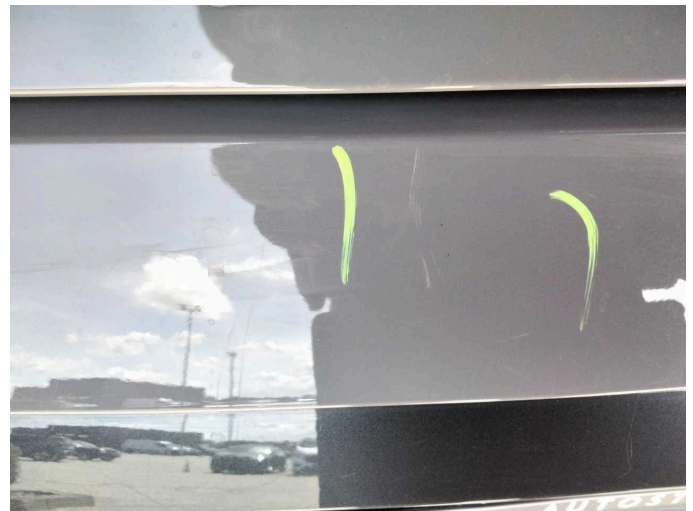
Damage 3: Roof: Roof - dent(s) - Smooth repair work



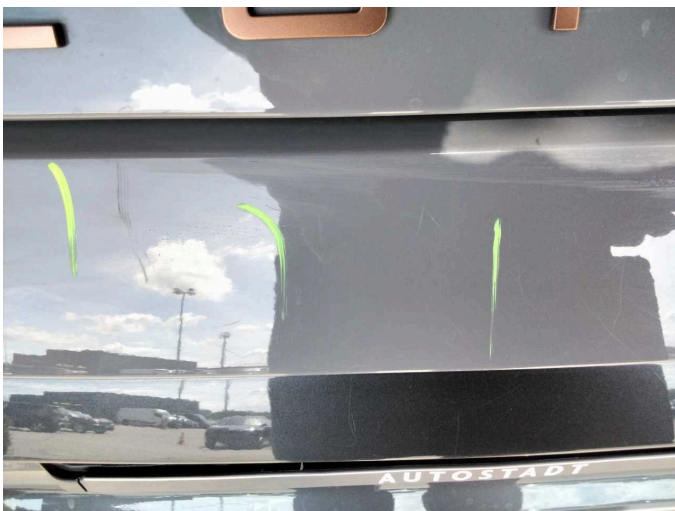
Damage 3: Roof: Roof - dent(s) - Smooth repair work



Damage 4: Rear bumper: Rear bumper - Scratch(es) - Smart repair



Damage 4: Rear bumper: Rear bumper - Scratch(es) - Smart repair



Damage 4: Rear bumper: Rear bumper - Scratch(es) - Smart repair



Damage 5: Sill - right side: Sill - Scratch(es) - Smart repair



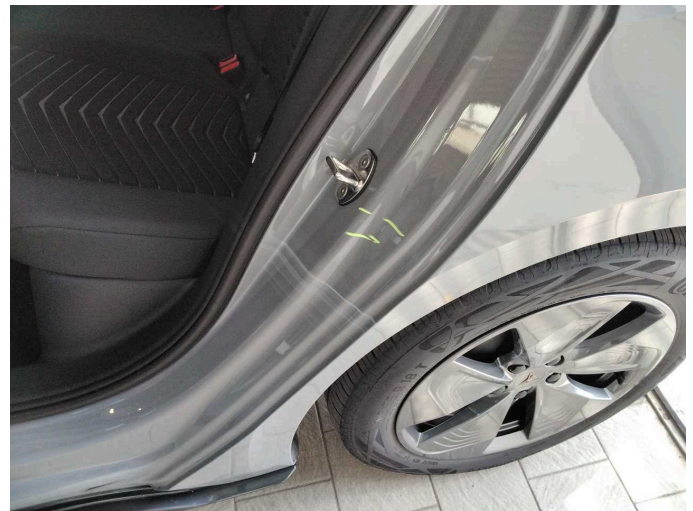
Damage 5: Sill - right side: Sill - Scratch(es) - Smart repair



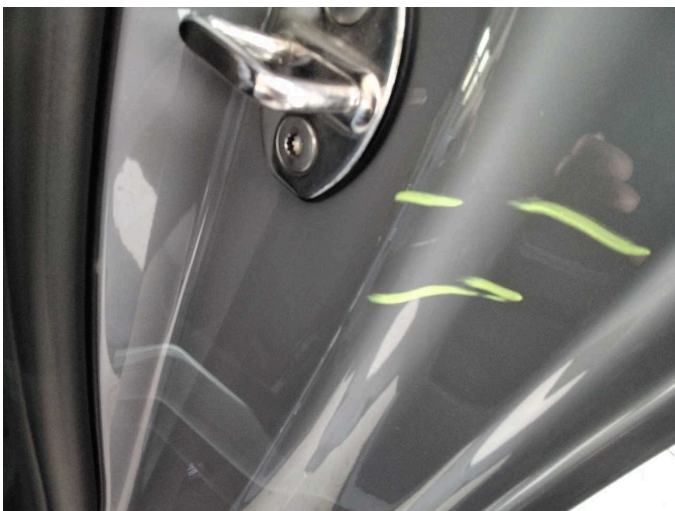
Damage 6: Fuel system: Tank cap - Scratch(es) - Smart repair



Damage 6: Fuel system: Tank cap - Scratch(es) - Smart repair



Damage 7: Body: C-pillar - left side - Scratch(es) - Smart repair



Damage 7: Body: C-pillar - left side - Scratch(es) - Smart repair



Damage 8: Wing mirror - right side: Cap - Scratch(es) - Paint



Damage 8: Wing mirror - right side: Cap - Scratch(es) - Paint



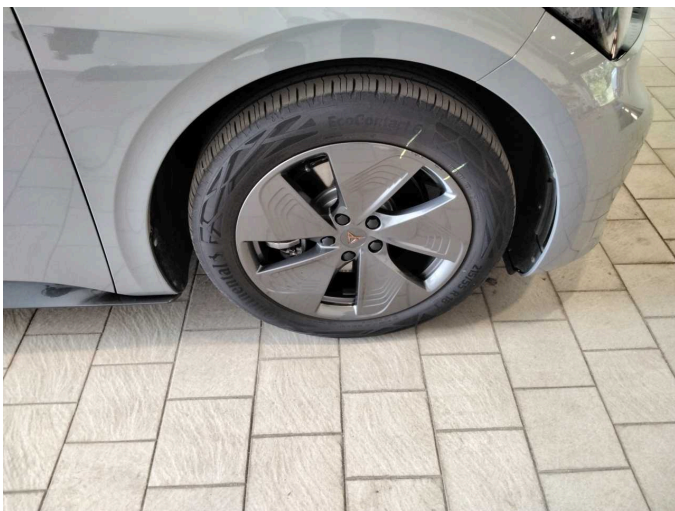
Damage 9: Wheel / tyres: Tyre - front right side - Damaged - Replace



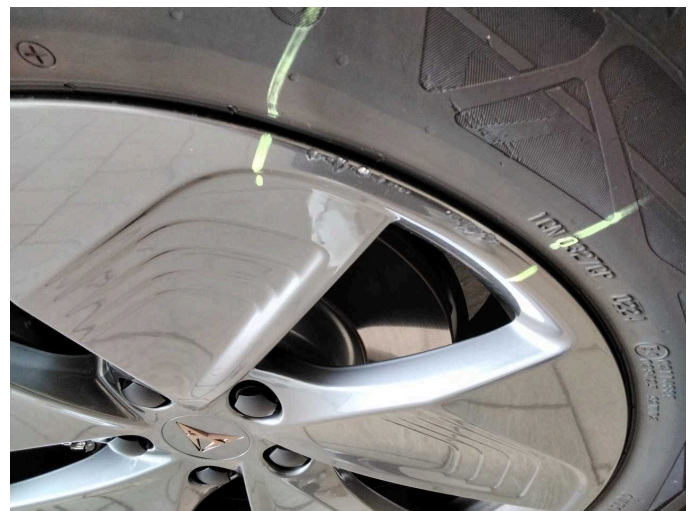
Damage 10: Door - rear right side: Door - Scratch(es) - Smart repair



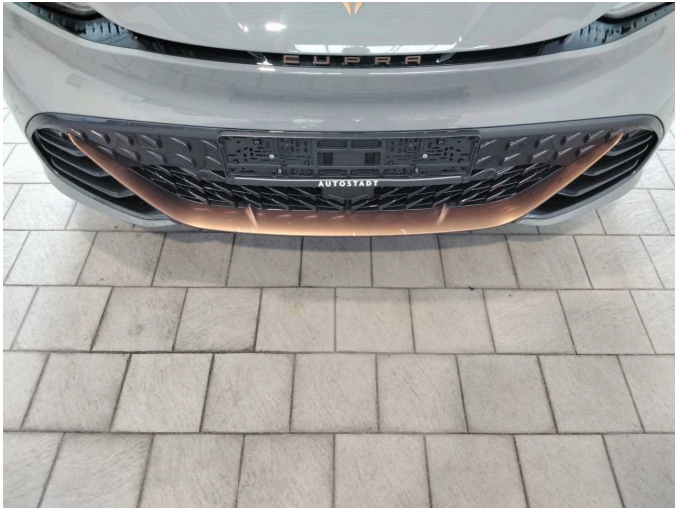
Damage 10: Door - rear right side: Door - Scratch(es) - Smart repair



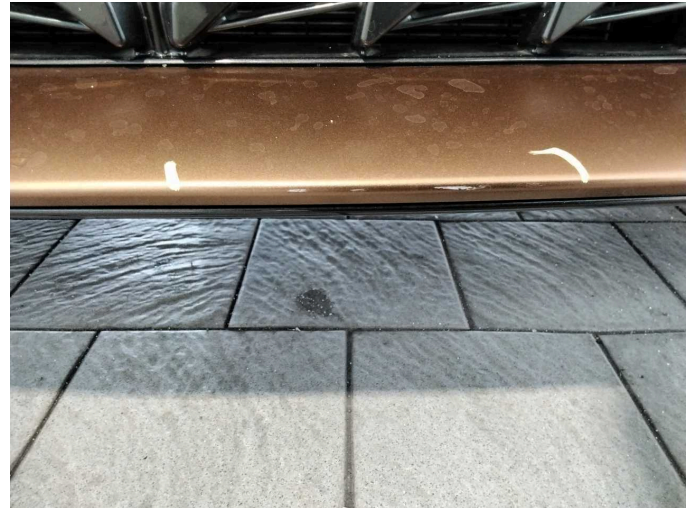
Damage 11: Wheel / tyres: Alloy rim - front right side - Scratch(es) - Loss in value



Damage 11: Wheel / tyres: Alloy rim - front right side - Scratch(es) - Loss in value



Damage 12: Front bumper: Spoiler - Scratch(es) - Paint



Damage 12: Front bumper: Spoiler - Scratch(es) - Paint



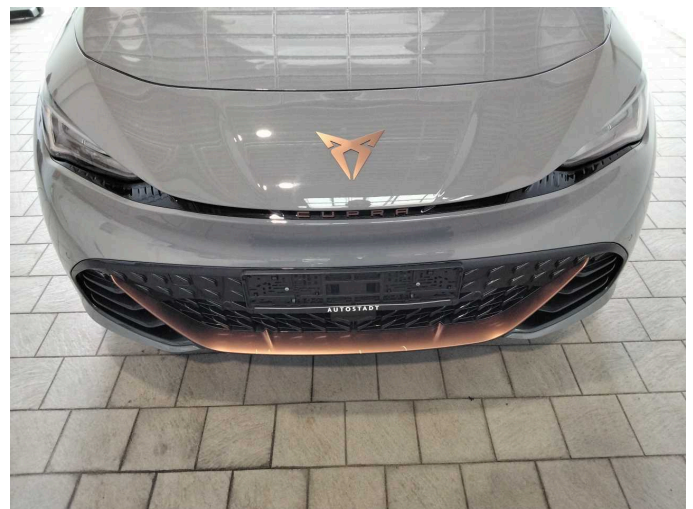
Damage 12: Front bumper: Spoiler - Scratch(es) - Paint



Wear and tear 1: Vehicle glazing: Windscreen - Stone chips - No deduction



Wear and tear 2: Bonnet: Bonnet - Stone chips - No deduction



Wear and tear 3: Front bumper: Front bumper - Stone chips - No deduction