

Expertise

Protocol number: 46015799
 Order No. / Reference: 26466591
 Inspection date: 17 Jun 2026

Manufacturer: Volkswagen

Model: Golf Variant 2.0 TDI SCR DSG Life

VIN: WVVZZZCDZMW510916



Vehicle details

Manufacturer / Type / Model / Equipment

Volkswagen Golf Variant 2.0 TDI SCR DSG Life

Vehicle Identification number WVVZZZCDZMW510916

Mileage (Read) 90,873 km

First registration 23 Apr 2021

Number of holders 1

Power / Engine displacement 110 kw / 1,968 ccm

Fuel type / Cylinder Diesel / 4

Gearbox / Number of gears Automatic / 7

Type of drive Front drive

Type of vehicle Station wagon

Colour / colour code Pure White

Doors / Seats 5 / 5

Upholstery type Cloth

Colour of upholstery Black-Anthracite

readiness to drive Not roadworthy /
moveable



Vehicle details

Maintenance booklet / proof	digital proof / complete	Next maintenance in	13,200 km
Last service on / at	02/2026 at 89,980 km		
Key is / should be	2 / 2	FZG documents	ZB#2 (B) was available (copy), ZB#1 (S) was not available.
		Letter No.	GA787018
Previous damage / Accident	None detectable	Repainting	Detectable
Inspection conditions	sufficient	Lifting equipment / pit	No
Test drive	Not performed	Engine function test	With complaint
readiness to drive	Not roadworthy / moveable		
Manufacturer key number/ type code number	0603 / CNN 00400		
Emission standard	EURO6;WLTP;AP;PI/CI; M, N1 I	fine dust sticker	
Permitted total weight	2,060 kg	Empty weight	

Tyres

Mounted tyres

#	Tyre size	Type of tyre	Manufacturer	Tread depth
1)	205/55 R16 91H	Winter tyres on Steel rim with wheel cover	Continental	7mm / 7mm
2)	205/55 R16 91H	Winter tyres on Steel rim with wheel cover	Continental	7mm / 7mm

Additional tyres

#	Tyre size	Type of tyre	Manufacturer	Tread depth
1)	205/55 R16 91H	Summer tyres on Light alloy	Pirelli	3mm / 3mm
2)	205/55 R16 91H	Summer tyres on Light alloy	Pirelli	4mm / 4mm

Replacement

Typ	Tyre size	Type of tyre	Manufacturer	Tread depth
	Tirefit			

Legend: Tread depth information for the left tire is listed first, for the right tire it is listed second on the axle in the direction of travel.

TÜV SÜD Auto Partner GmbH
Gutenbergstraße 13
70771 Leinfelden-Echterdingen

Inspection location
ARS Altmann AG Automobillogistik
Römerstraße 3
64560 Riedstadt



Equipment



Standard equipment

- Turning brake function and evasive steering support (When making left turns, the Golf with the turning assistant automatically brakes to a standstill (with a simultaneous acoustic and visual warning) should a vehicle approach in the lane to be crossed. Depending on the speed of both vehicles, the turning assistant can, within the system limits, prevent the accident or mitigate its consequences.)
- Electrically adjustable and heated exterior mirrors with memory function and passenger-side mirror lowering function.
- Car2X (Using the WLANp ITS G5 standard, all Car2X-enabled vehicles and traffic systems such as traffic lights can transmit data at high speed without using the mobile network. This works over a distance of around 800 meters - enough to warn of an invisible traffic jam.)
- Dual-tone signal horn
- Parking aid (acoustic warning signals for obstacles in the front and rear area)
- Electronic parking brake including auto-hold function
- Automatic headlight control with LED daytime running lights ("Coming home" function and "Leaving home" function)
- Electric windows, front and rear
- Windscreen made of laminated safety glass, heat and sound insulating
- Speed limiter
- Rear window heated
- Rear window wiper with intermittent function
- ISOFIX mounting points (for child seats on the outer rear seats and on the front passenger seat, i-Size compatible)
- Rear headrests (3)
- LED reading lights at the front (2) and 2 at the rear
- LED headlights
- Dynamic headlight range control
- Fatigue detection (detects signs of possible driver fatigue based on characteristic steering behavior, time of day and driving duration and issues a visual and audible warning)
- Emergency call service (no registration required, service is activated upon delivery)
- Package: Seating comfort package (2 USB-C ports in the front, 2 USB-C charging ports on the rear center console; charging power up to 45 W - front center armrest adjustable in height and length - front seats with height adjustment)
- Wheels: Alloy wheels (4) "Norfolk" 7 J x 16 (tires 205/55 R 16)
- Rear bench seat undivided, backrest asymmetrically split and foldable with center armrest
- Seat belts: Three-point automatic seat belt for the middle rear seat
- Seat belts: Three-point automatic seat belts at the front with height adjustment and belt tensioner
- Seats: Comfort seats in the front (with height adjustment and lumbar support)
- 12-volt power outlet in the luggage compartment
- Telephone interface with inductive charging function
- Airbag for driver and front passenger (with passenger airbag deactivation)
- Airbag: Head airbag system for front and rear passengers including front side airbags
- Ambient lighting
- App-Connect (selected apps for Android smartphones and Apple iPhones can be displayed and operated on the touchscreen of the radio or navigation system)
- Exterior mirror housings and door handles in body color
- third brake light
- black roof rails
- Decorative inlays "Nature Cross Brushed" (for instrument panel and front door trim)
- Diesel particulate filter and SCR catalyst
- Digital Cockpit Pro, multicolor (various info profiles selectable)
- Electric auxiliary air heater
- Electronic differential lock XDS
- Electronic stability program and electromechanical brake booster (Anti-lock braking system with brake assist - Electronic brake force distribution - Traction control - Electronic differential lock - Engine drag torque control - Trailer stabilization)
- Pedestrian protection measures expanded
- luggage compartment cover
- Transmission: 7-speed DSG (7-speed dual-clutch transmission DSG)
- Rear spoiler in car color
- "Climatronic" air conditioning system (with active combination filter)
- Front headrests (safety-optimized)
- LED taillights
- Steering wheel: Multifunction leather steering wheel with paddle shifters
- Non-smoking version (storage compartment and 12V socket at the front)
- Emergency braking assistant "Front Assist" with pedestrian and cyclist detection (detects critical distance situations to other vehicles and helps to shorten the stopping distance - warns the driver visually and audibly in dangerous situations as well as with a preventive braking jolt with pedestrian and cyclist detection - also reacts to pedestrians and cyclists)
- Tire pressure monitoring system (passive)
- Wheels: Tire Mobility Set (12-volt compressor and tire sealant)
- Keyless start system without safe locking
- Electromechanical power steering (speed-dependent control)
- Seat belts: Three-point automatic seat belts for the outer rear seats
- Seat covers in "Maze" fabric
- Lane keeping assistant "Lane Assist"
- Start-stop system (with brake energy recuperation)
- Bumpers in body color
- Ambient lighting with logo projection
- Green thermal insulation glazing, sides and rear



- Electronic immobilizer
- Central locking without safe locking, with remote control and 2 remote folding keys

Extra equipment

- Towbar, foldable with electric release
- Navigation system "Discover Media" including "Streaming & Internet" and voice control (25.4 cm touchscreen - 6+1 speakers - App-Connect including App-Connect Wireless for Apple CarPlay - FM and DAB+ radio reception - Multifunction camera - 4x20 watts - Dual tuner with phase diversity - 3-band sound control - RDS - MP3 playback - USB-C with Apple compatibility - Voice control - Map with 2D display - Traffic sign display - Traffic sign recognition - Telephone interface (hands-free system, Bluetooth audio))
- Wheels: Winter wheels (additional) steel, 6.5 J x 16 (4 steel wheels 6.5 J x 16 - wheel wrench and jack - winter tires 205/55 R16 H)
- Paint finish: Special color Pure White
- Package: Business Premium incl. navigation system (DSG) (6+1 speakers, App-Connect incl. App-Connect Wireless for Apple CarPlay, ACC adaptive cruise control "stop & go", speed limiter, DAB+ radio, Travel Assist, Lane Assist, Emergency Assist, leather multifunction steering wheel, heated, with paddle shifters, multifunction camera, Discover Media navigation incl. streaming & internet MP3, cargo net partition, radio, heated windshield washer system, voice control, telephone interface, Comfort with inductive charging, textile floor mats front and rear, traffic sign recognition, heated front seats)

Brief expert findings

Documents submitted	At the time of the inspection, the vehicle registration certificate Part 2 (title) was available, but the vehicle registration certificate Part 1 (document) was not. (Copy)
VIN comparison	The vehicle identification number (VIN) was read from the vehicle and its conformity with the submitted documents was confirmed by the undersigned during the inspection.
Inspection	The inspection conditions were sufficient for the assessment of the vehicle. No lifting equipment or pit was available for inspecting the vehicle. Therefore, inspection of the vehicle's underside was only possible to a limited extent.
Test drive	No test drive/shunting maneuver was carried out during the inspection of the vehicle.
Engine function test	An engine test run was performed, problem has been detected This is due to the following reason.: Bordnetzbatterie Spannung niedrig, Motorstart nur mit ext. Stromquelle möglich
readiness to drive	The vehicle was not capable of driving under its own power at the time of inspection, but can be moved on its own axle with the aid of assistance.

Value reducing factors

No.	Component group	Description
1	Instrument panel	Indicator light (Mehrere Leuchten im Zusammenhang mit niedr. Bordnetzspannung) - Specify findings - Perform diagnosis
2	Wing mirror - left side	Cap - Scratched - Smart repair
3	Wing mirror - right side	Cap - Scratched - Smart repair
4	Bonnet	Insulation lining - Damage caused by marten / rodent - Replace
5	Body	Body - Glued / labelled - De-glue / neutralise
6	Body	Body - Damage by hail - Smooth repair work
7	Rear bumper	Rear bumper - Scratched - Paint
8	Front bumper	Front bumper - Scratched - Paint

Missing parts

Description

Equipment - Tirefit filler



Repainting

No. Repainting

1 Mudguard - left side, Professionally carried out, Invoice of repair done Non-existent

Paint coat thickness measurement

Mudguard - left side 289 µm |

Order/Scope of Order

An order was placed to prepare a sales report for the described vehicle. This report includes the following:

- Description of key vehicle information
- Documentation of equipment features
(*Delivery by third-party service providers*)
- Documentation of damage, defects, missing parts
- Documentation of prior damage, unrepaired prior damage, repainting
- A brief visual or functional inspection of the equipment details, if possible.
(*Functional testing of driver assistance systems is not included in the scope of services!*)
- a photographic documentation of the vehicle

Basis for the order

This product is based on the guidelines for vehicle returns and valuations published by Alphabet Fleet GmbH. The expert makes the specific findings in each individual case objectively, within the framework of the prescribed standards, based on their own expertise.

The vehicle inspection takes place in a fully assembled, unassembled state.

Damage or defects that can only be detected during disassembly/diagnostic work or through further investigation remain within the realm of prognostic risk. An increased risk exists due to concealed defects caused by fraudulent misrepresentation and which were not identifiable by the expert.

Damage or defects resulting from normal use or wear and tear of the vehicle will be accepted in accordance with the applicable standard.

There was no explicit identification or monetary consideration of the expected features within the product.

Features which, in their nature and extent, slightly exceed normal use but do not constitute unacceptable damage, will be documented and indicated as signs of wear, if applicable.

Damage or defects that, according to the applicable standard, can no longer be attributed to normal use or wear and tear are listed under "Value Reducing Factors" in the product description.

Depending on the product specification, a monetary ID can be provided. If this takes place, the costs can be 100% d or pro rata depending on the vehicle's age and mileage.

Previous damages

No apparent prior damage that had been repaired could be found on the vehicle.



Figure 1: Diagonal front (left)



Figure 2: Diagonal front (right)



Figure 3: Diagonal rear (left)



Figure 4: Diagonal rear (right)



Figure 5: Interior - front



Figure 6: Interior - rear



Figure 7: Instrument cluster



Figure 8: Instrument panel



Figure 9: Interior 360° view



Figure 10: Cargo area



Figure 11: VIN



Figure 12: Mounted tyres

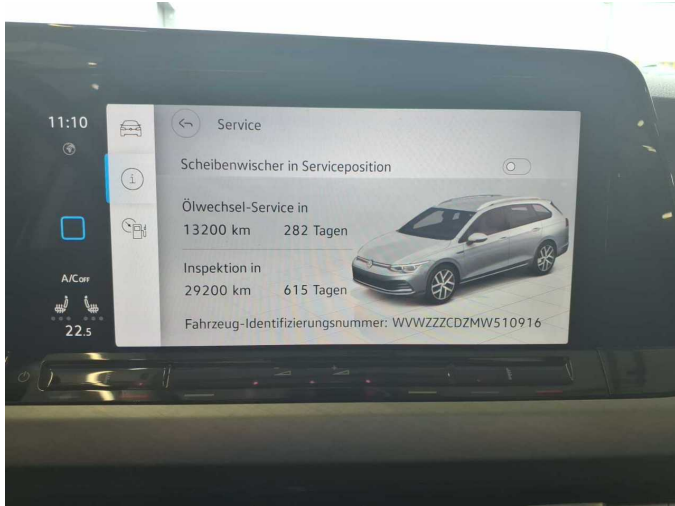


Figure 13: Documents



Figure 14: Documents



Figure 15: Additional tyres



Figure 16: Navigation



Figure 17: Misc.



Figure 18: Misc.



Figure 19: Misc.



Figure 20: Misc.



Figure 21: Misc.



Figure 22: Misc.



Figure 23: Misc.

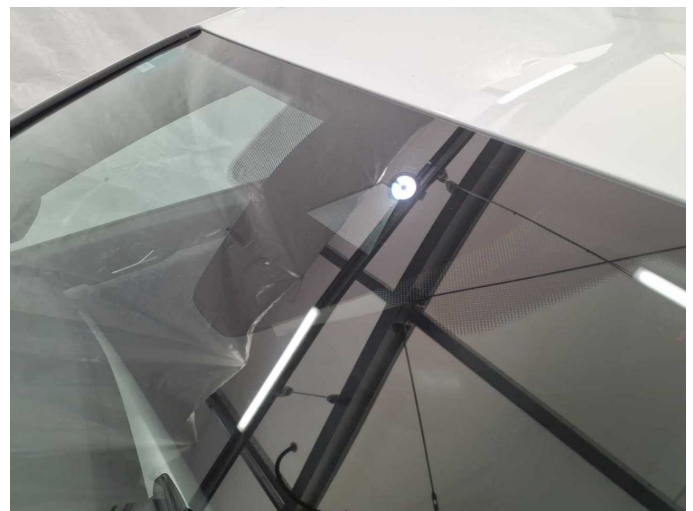


Figure 24: Misc.



Figure 25: Misc.



Figure 26: Misc.



Figure 27: Misc.



Figure 28: Misc.



Figure 29: Misc.

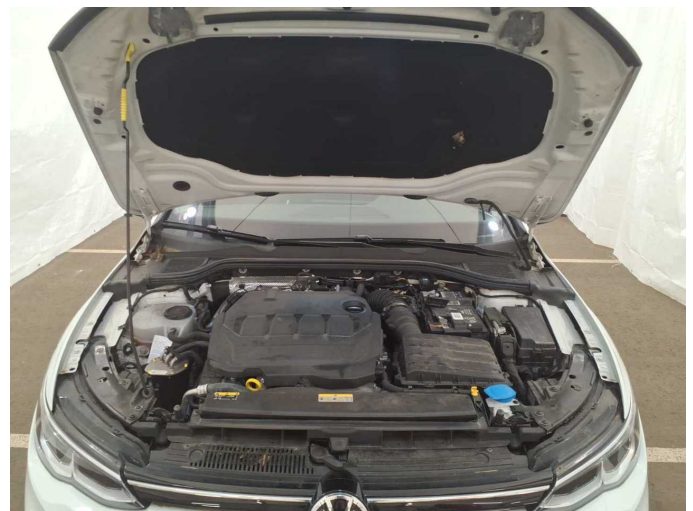


Figure 30: Misc.



Figure 31: Misc.



Figure 32: Misc.



Damage 1: Instrument panel: Indicator light (Mehrere Leuchten im Zusammenhang mit niedr. Bordnetzspannung) - Specify findings - Perform diagnosis



Damage 1: Instrument panel: Indicator light (Mehrere Leuchten im Zusammenhang mit niedr. Bordnetzspannung) - Specify findings - Perform diagnosis



Damage 2: Wing mirror - left side: Cap - Scratched - Smart repair



Damage 2: Wing mirror - left side: Cap - Scratched - Smart repair



Damage 3: Wing mirror - right side: Cap - Scratched - Smart repair



Damage 3: Wing mirror - right side: Cap - Scratched - Smart repair



Damage 4: Bonnet: Insulation lining - Damage caused by marten / rodent - Replace



Damage 4: Bonnet: Insulation lining - Damage caused by marten / rodent - Replace



Damage 5: Body: Body - Glued / labelled - De-glue / neutralise



Damage 5: Body: Body - Glued / labelled - De-glue / neutralise



Damage 5: Body: Body - Glued / labelled - De-glue / neutralise



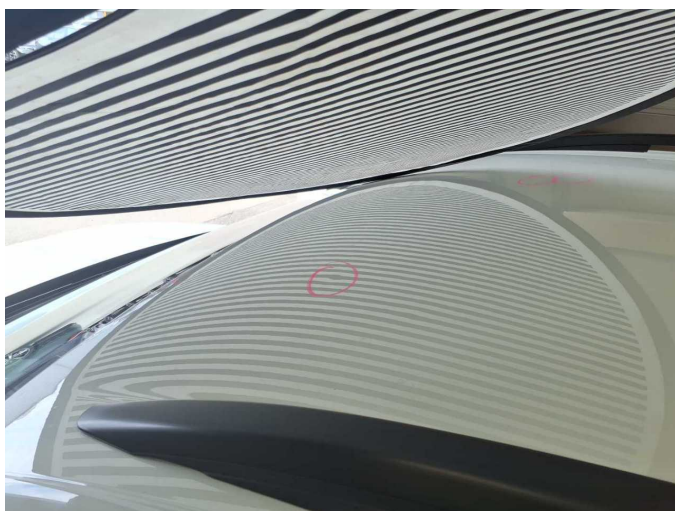
Damage 5: Body: Body - Glued / labelled - De-glue / neutralise



Damage 6: Body: Body - Damage by hail - Smooth repair work



Damage 6: Body: Body - Damage by hail - Smooth repair work



Damage 6: Body: Body - Damage by hail - Smooth repair work



Damage 6: Body: Body - Damage by hail - Smooth repair work



Damage 6: Body: Body - Damage by hail - Smooth repair work



Damage 6: Body: Body - Damage by hail - Smooth repair work



Damage 6: Body: Body - Damage by hail - Smooth repair work



Damage 7: Rear bumper: Rear bumper - Scratched - Paint



Damage 7: Rear bumper: Rear bumper - Scratched - Paint



Damage 7: Rear bumper: Rear bumper - Scratched - Paint



Damage 8: Front bumper: Front bumper - Scratched - Paint



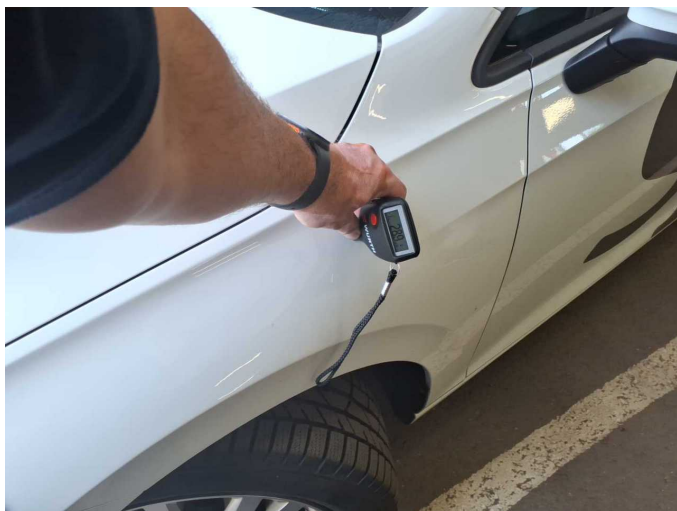
Damage 8: Front bumper: Front bumper - Scratched - Paint



Damage 8: Front bumper: Front bumper - Scratched - Paint



Missing part 1: Equipment: Tirefit filler - Missing - Replace



Repainting 1: Mudguard - left side



Repainting 1: Mudguard - left side



Wartungshistorie

(gemäß Auftraggeber Informationen)

Fahrgestellnummer: WVWZZZCDZMW510916
Hersteller / Modell: VOLKSWAGEN VW Golf Variant 2.0 TDI SCR DSG Life

Datum	KM-Stand	Beschreibung
03.02.2026	89.980	Bremse Sonstiges; Bremsklötze hinten; Bremsscheiben + Klötze h; Bremsscheiben hinten; Kraftstofffilter ern; Luftfiltereinsatz ern; Regelwartungsdienst; Systemtest/Eigendiagnose; Wartung Sonstiges
29.10.2025	83.750	Motoröl b. Wartung; Ölfilter ern; Ölwechsel; Wartung Sonstiges
06.11.2024	56.911	Motoröl b. Wartung; Ölfilter ern; Ölwechsel; Wartung Sonstiges
26.08.2024	54.015	Reparatur Sonstiges; Systemtest/Eigendiagnose
19.04.2024	49.200	AU; Bremse Sonstiges; Bremsklötze vorne; Bremsscheiben vorne
24.01.2024	46.500	Systemtest/Eigendiagnose
10.10.2023	40.485	Motoröl b. Wartung; Ölfilter ern; Ölwechsel; Wartung Sonstiges
03.07.2023	37.862	Systemtest/Eigendiagnose
04.01.2023	30.296	Regelwartungsdienst
02.05.2022	19.133	AU; Motoröl b. Wartung; Ölfilter ern; Ölwechsel; Wartung Sonstiges