

# INSPECTION REPORT

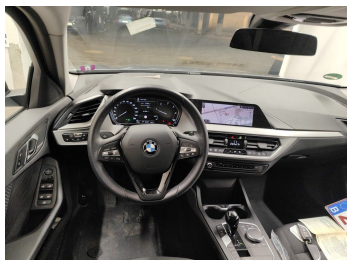
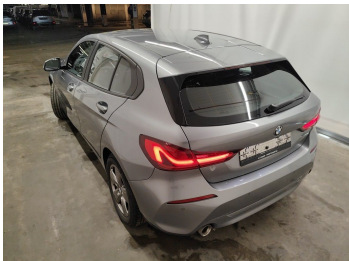
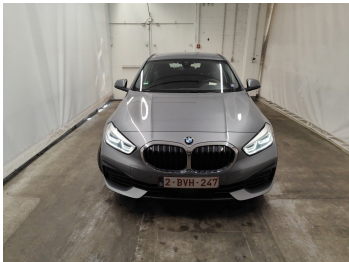
End of contract

## GENERAL INFO

File	312608
License plate	2BVH247
Vehicle identification number	WBA7M710207K84844
Dossier	2021 188 098
Make	BMW 116d 85kW Aut.
Mileage	97025
First registration	05/04/2022
client availability date	20/05/2026
inspectionDate	27/05/2026

## CHECK POINTS

Description	Number	Present	Remark
Original license plate		Y	
Registration Part 2		N	
Keys	2	Y	
Spare wheel		N	
Towbar (+keys)		N	
Certificate of conformity		Y	
Registration certificate		Y	
Repair kit		N	
RunOnFlat		N	
Charging cable		N	
Charge back wrong tyres		N	





## DAMAGES

Damages	Type	Acceptable
13	Bumper Front // Painting	N
77	Side View Mirror Left / Shell / Replace Not Painted	N
116	Wing Rear Left // Polish	Y
133	Bumper Rear // Painting	N
225	Side View Mirror Right // Polish	Y
227	Side View Mirror Right / Shell / Replace Not Painted	N
271	Bumper Front / Trim Left / Replace	N
311	Wheel Alloy Front Left // Repair	N
341	Wheel Alloy Front Right // Repair	N
594	Trunk Lid Interior Coating / Complete Panel / Replace	Y

## Damage Pictures



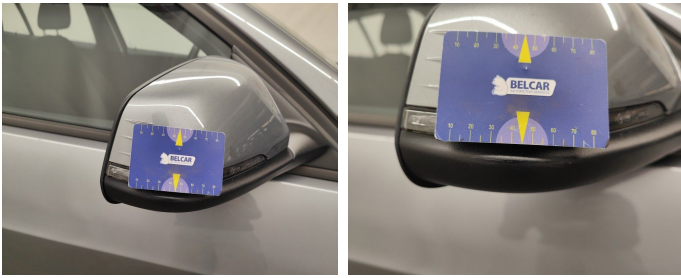
Trunk Lid Interior Coating / Complete Panel / Replace-scratch



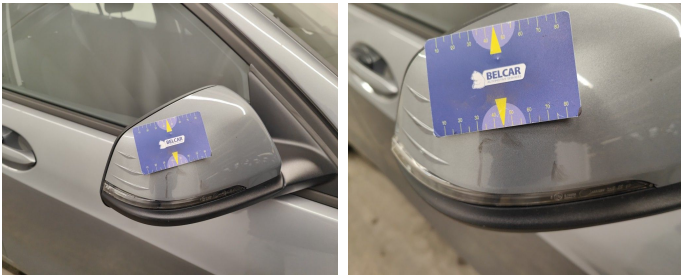
Wing Rear Left // Polish-scratch



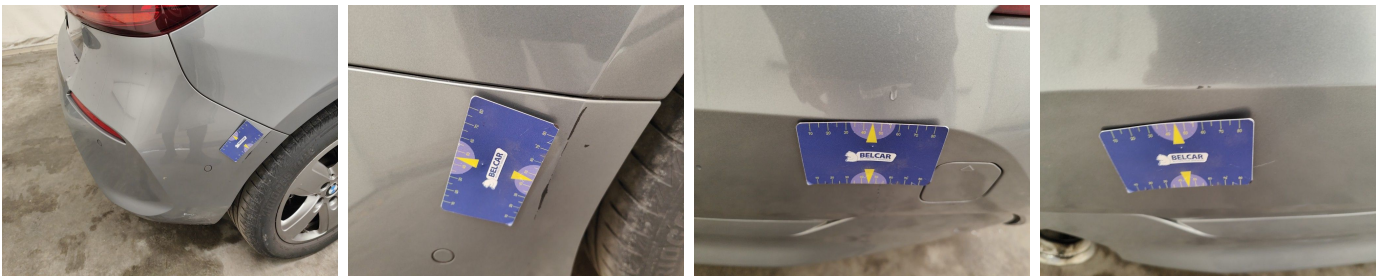
Side View Mirror Left / Shell / Replace Not Painted-scratch



Side View Mirror Right / Shell / Replace Not Painted-scratch



Side View Mirror Right // Polish-scratch



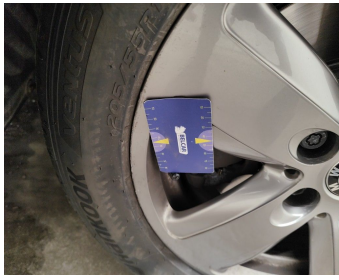
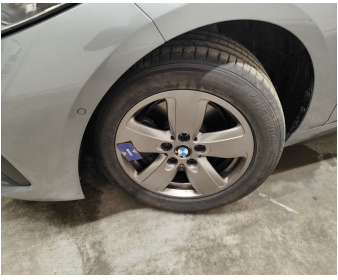
Bumper Rear // Painting-scratch



Bumper Front // Painting-scratch



Bumper Front / Trim Left / Replace-scratch



Wheel Alloy Front Left // Repair-scratch



Wheel Alloy Front Right // Repair-scratch