

## Expertise

Protocol number: 46250159  
Order No. / Reference: 26576790  
Inspection date: 30 Jun 2026

Manufacturer: Mercedes-Benz

Model: E 220 d 9G-TRONIC Avantgarde

VIN: W1K2130041B063117



### Vehicle details

#### Manufacturer / Type / Model / Equipment

Mercedes-Benz E 220 d 9G-TRONIC Avantgarde

<b>Vehicle Identification number</b>	W1K2130041B063117
<b>Mileage (Read)</b>	58,869 km
<b>First registration</b>	26 Aug 2022
<b>Number of holders</b>	1
<b>Next periodical technical inspection</b>	08/2027 (Report not on hand)

<b>Power / Engine displacement</b>	147 kw / 1,993 ccm
------------------------------------	--------------------

<b>Fuel type / Cylinder</b>	Hybrid Diesel / E / 4
-----------------------------	-----------------------

<b>Gearbox / Number of gears</b>	Automatic / 9
----------------------------------	---------------

<b>Type of drive</b>	Rear drive
----------------------	------------

<b>Type of vehicle</b>	Station wagon
------------------------	---------------

<b>Colour / colour code</b>	SCHWARZ - UNILACK
-----------------------------	-------------------

<b>Doors / Seats</b>	4 / 5
----------------------	-------

<b>Upholstery type</b>	Cloth / leather combination
------------------------	--------------------------------

<b>Colour of upholstery</b>	Black-Anthracite
-----------------------------	------------------



## Vehicle details

<b>Maintenance booklet / proof</b>	digital proof / complete	<b>Next maintenance in</b>	50 Tag(e)
<b>Last service on / at</b>	08/2025 at 40,027 km		
<b>Key is / should be</b>	2 / 2	<b>FZG documents</b>	ZB#2 (B) was available (copy), ZB#1 (S) was not available.
		<b>Letter No.</b>	GJ433164
<b>Previous damage / Accident</b>	None detectable	<b>Repainting</b>	None detectable
<b>Inspection conditions</b>	sufficient	<b>Lifting equipment / pit</b>	yes
<b>Test drive</b>	Not performed	<b>Engine function test</b>	Performed
<b>Manufacturer key number/ type code number</b>	2222 / BEJ 00025		
<b>Emission standard</b>	EURO6;WLTP;AP;PI/CI; M, N1 I	<b>fine dust sticker</b>	
<b>Permitted total weight</b>	2,490 kg	<b>Empty weight</b>	

## Tyres

### Mounted tyres

#	Tyre size	Type of tyre	Manufacturer	Tread depth
1)	225/55 R17 97H	Winter tyres on Light alloy	Pirelli	5mm / 5mm
2)	225/55 R17 97H	Winter tyres on Light alloy	Pirelli	5mm / 5mm

### Additional tyres

#	Tyre size	Type of tyre	Manufacturer	Tread depth
1)	225/55 R17 97Y	Summer tyres on Light alloy	Goodyear	4mm / 4mm
2)	225/55 R17 97Y	Summer tyres on Light alloy	Goodyear	3mm / 3mm

**Legend: Tread depth information for the left tire is listed first, for the right tire it is listed second on the axle in the direction of travel.**



## Equipment

### Standard equipment

- ADAPTIVE BRAKE with hill start assist, pre-filling and drying braking in wet conditions
- Airbag: Automatic passenger airbag deactivation
- Airbag: Side airbag for driver and front passenger
- Ambient lighting with 64 colors and 3 color zones
- Foldable armrest for driver and front passenger
- Basic services
- Brake assist, active
- Tachometer
- DYNAMIC SELECT
- Chassis: AGILITY CONTROL chassis with selective damping system and lowered suspension
- Velour floor mats
- Heated rear window with timer
- THERMATIC automatic climate control
- Paint finish: Solid
- Steering wheel: Multifunction steering wheel in Nappa leather in a 3-spoke design
- Mercedes-Benz emergency call system
- Center console with on-the-fly storage compartment
- Navigation: Hard disk navigation
- Package: Filing package
- Package: Seating comfort
- PRE-SAFE system
- Radio accessories: Communication module (LTE) for using Mercedes me connect services
- Windscreen wipers with rain sensor
- Seats: i-Size child seat attachment
- Cruise control
- High-visibility vest for drivers
- Green, heat-insulating glass all around
- Decorative elements: aluminum with longitudinal brushing, light finish
- AdBlue tank with a capacity of 23.5 liters
- Airbag for driver and front passenger
- Airbag: Kneebag for driver
- Airbag: Windowbags left/right
- Anti-lock braking system (ABS)
- Attention Assist
- On-board computer
- Diesel particulate filter
- Third brake light
- Electronic Stability Program (ESP)
- Electric window regulator with comfort operation and anti-pinch protection, 4-way
- Transmission: 9-speed automatic, 9G-TRONIC
- Interior headliner in nevgrau fabric
- Headrests (5)
- LED High Performance Headlights
- Steering column mechanically adjustable in height and length
- Center console piano black finish
- Navigation accessories: Pre-installation for Live Traffic Information
- Package: AVANTGARDE Exterior
- Upholstery: ARTICO leatherette/Norwich fabric
- Radio accessories: Digital radio
- Tire pressure monitoring system
- Remote Services Plus
- Power steering
- Seats: Front seats electrically adjustable
- Touchpad
- Electronic immobilizer
- Central locking



### Extra equipment

- Adaptive High Beam Assist (You activate the system with one operation and then benefit from the long beam range.)
- Decorative elements, wood, ash, black, open-pore
- Fuel tank with larger volume 66 l
- KEYLESS-GO (KEYLESS-GO access and drive authorization system - electronic vehicle key: communicates with the vehicle within 2 meters of the respective vehicle door - door handles with chrome inserts)
- Package: MBUX High-End Package (without MBUX Augmented Reality) (Traffic Sign Assist - Connectivity Package Navigation: Hard drive navigation, Extended navigation services, Destination input via touch function or voice control, Near Field Communication (NFC) - Widescreen Cockpit with 12.3 inches - Wireless charging system for mobile devices - Smartphone integration: merges the mobile phone with the media system via Apple CarPlay and Android Auto - Preparation for digital key handover)
- Package: Mirrors (both exterior mirrors electrically foldable (button in the driver's door control panel) - automatic lowering of the passenger-side mirror glass to parking position when reverse gear is engaged - interior mirror and driver's side exterior mirror automatically dimming continuously - ambient lighting of the exterior mirror to illuminate the entry area)
- Power outlet: 2 USB ports in the rear with charging function
- Seats: Heated seats for driver and front passenger (selectable in three stages - Intelligent and comfortable: The seat heating switches off automatically)
- Type designation removed from trunk lid
- Glazing: Heat-insulating dark tinted glass (for rear side windows and rear window. The dark tint of the rear side windows and the rear window emphasizes the sporty and individual look. At the same time, it protects rear passengers and the interior from prying eyes and direct sunlight.)
- Illuminated door sills with Mercedes-Benz lettering (With an illuminated "Mercedes-Benz" lettering, the brushed stainless steel front door sills add sporty and exclusive highlights. At the same time, they protect the entry area from damage.)
- Package: Driving Assistance Package Plus (Active Distance Assist DISTRONIC incl. Active Speed Limit Assist, Extended Automatic Restart on Motorways, Route-Based Speed Adaptation with Traffic Jam Function (only when Parking Packages are selected), Active Steering Assist incl. Active Emergency Stop Assist with SOS Function, Emergency Lane Radio, Active Brake Assist incl. Turn and Intersection Radio, Traffic Jam Emergency Brake Radio, Evasive Steering Assist, Active Lane Keeping Assist, Active Blind Spot Assist incl. Exit Warning, Pedestrian Warning Radio, PRE-SAFE Impulse Side, Active Traffic Jam Assist)
- Radio accessories: Burmester surround sound system (13 high-performance speakers - 9-channel DSP amplifier with a total output of 590 W - Frontbass technology with woofers integrated into the body shell for powerful bass reproduction - Sound optimization for the front and rear seats - Noise cancellation (VNC) - Sound preset: Surround function to generate a virtual surround sound - Multi-channel format support for true surround sound)
- Seats: Rear seat backrests foldable

### Brief expert findings

Documents submitted	At the time of the inspection, the vehicle registration certificate Part 2 (title) was available, but the vehicle registration certificate Part 1 (document) was not. (Copy)
VIN comparison	The vehicle identification number (VIN) was read from the vehicle and its conformity with the submitted documents was confirmed by the undersigned during the inspection.
Inspection	The inspection conditions were sufficient for the assessment of the vehicle. Lifting equipment and/or a pit were available for examining the vehicle.
Test drive	No test drive/shunting maneuver was carried out during the inspection of the vehicle.
Engine function test	An engine test run was performed.

### Value reducing factors

No.	Component group	Description
1	Side panel - rear right side	Side panel - Dent / paintcoat damage - Repair and paint
2	Vehicle glazing	Windscreen (Rissbildung) - Stone chips - Replace

### Wear and tear

No.	Component group	Description
1	Front bumper	Front bumper - Stone chips - No deduction
2	Bonnet	Bonnet - Stone chips - No deduction

The vehicle shows signs of wear and tear commensurate with its age and use.



## Order/Scope of Order

An order was placed to prepare a sales report for the described vehicle. This report includes the following:

- Description of key vehicle information
- Documentation of equipment features  
*(Delivery by third-party service providers)*
- Documentation of damage, defects, missing parts
- Documentation of prior damage, unrepaired prior damage, repainting
- A brief visual or functional inspection of the equipment details, if possible.  
*(Functional testing of driver assistance systems is not included in the scope of services!)*
- a photographic documentation of the vehicle

## Basis for the order

This product is based on the guidelines for vehicle returns and valuations published by Alphabet Fleet GmbH. The expert makes the specific findings in each individual case objectively, within the framework of the prescribed standards, based on their own expertise.

The vehicle inspection takes place in a fully assembled, unassembled state.

Damage or defects that can only be detected during disassembly/diagnostic work or through further investigation remain within the realm of prognostic risk. An increased risk exists due to concealed defects caused by fraudulent misrepresentation and which were not identifiable by the expert.

Damage or defects resulting from normal use or wear and tear of the vehicle will be accepted in accordance with the applicable standard.

There was no explicit identification or monetary consideration of the expected features within the product.

Features which, in their nature and extent, slightly exceed normal use but do not constitute unacceptable damage, will be documented and indicated as signs of wear, if applicable.

Damage or defects that, according to the applicable standard, can no longer be attributed to normal use or wear and tear are listed under "Value Reducing Factors" in the product description.

Depending on the product specification, a monetary ID can be provided. If this takes place, the costs can be 100% d or pro rata depending on the vehicle's age and mileage.

## Previous damages

No apparent prior damage that had been repaired could be found on the vehicle.

## Comments

Der montierte Winterradsatz ist nicht Bestandteil der Ausstattung.



Figure 1: Diagonal front (left)



Figure 2: Diagonal front (right)



Figure 3: Diagonal rear (left)



Figure 4: Diagonal rear (right)



Figure 5: Interior - front



Figure 6: Interior - rear



Figure 7: Instrument cluster



Figure 8: Instrument panel



Figure 9: Interior 360° view



Figure 10: Cargo area

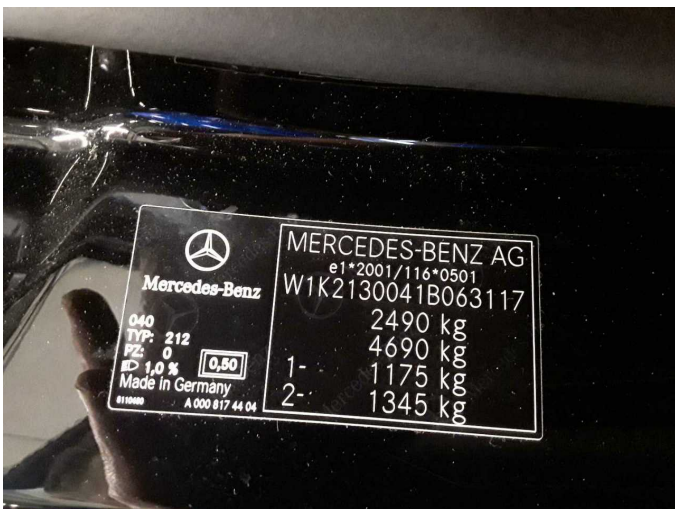


Figure 11: VIN



Figure 12: Mounted tyres



Figure 13: Documents



Figure 14: Additional tyres



Figure 15: Navigation



Figure 16: Misc.

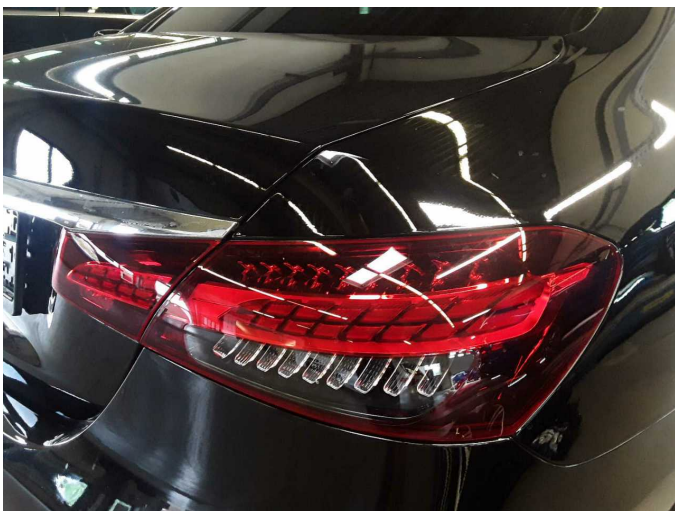


Figure 17: Misc.



Figure 18: Misc.



Figure 19: Misc.



Figure 20: Misc.



Figure 21: Misc.



Figure 22: Misc.



Figure 23: Misc.

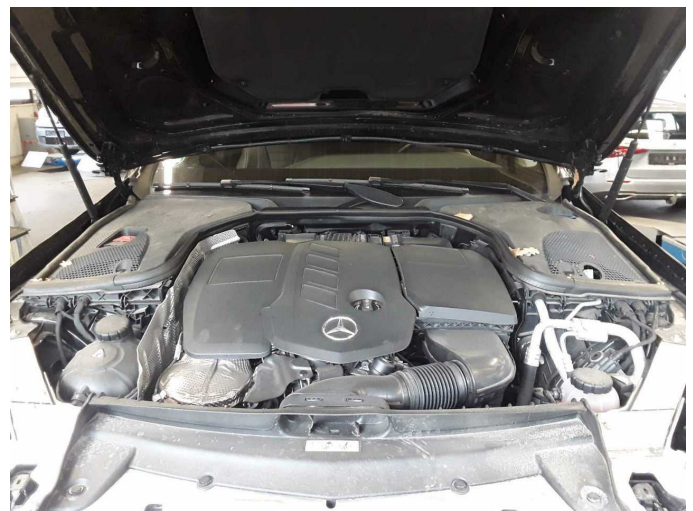


Figure 24: Misc.



Figure 25: Misc.



Figure 26: Misc.



Figure 27: Misc.



Damage 1: Side panel - rear right side: Side panel - Dent / paintcoat damage - Repair and paint



Damage 1: Side panel - rear right side: Side panel - Dent / paintcoat damage - Repair and paint



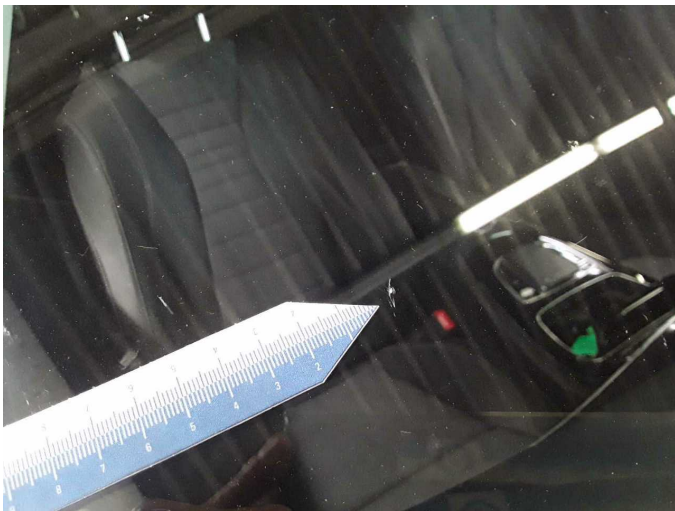
Damage 1: Side panel - rear right side: Side panel - Dent / paintcoat damage - Repair and paint



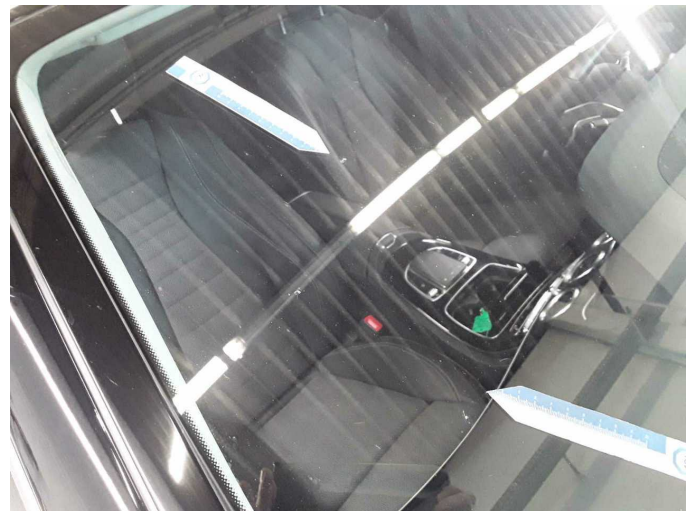
**Damage 2:** Vehicle glazing: Windscreen (Rissbildung) - Stone chips - Replace



**Damage 2:** Vehicle glazing: Windscreen (Rissbildung) - Stone chips - Replace



**Damage 2:** Vehicle glazing: Windscreen (Rissbildung) - Stone chips - Replace



**Damage 2:** Vehicle glazing: Windscreen (Rissbildung) - Stone chips - Replace



# Wartungshistorie

(gemäß Auftraggeber Informationen)

Fahrgestellnummer: W1K2130041B063117

Hersteller / Modell: MERCEDES-BENZ MB E 220 d 9G-TRONIC Avantgarde

Datum	KM-Stand	Beschreibung
20.08.2025	40.027	HU + AU
28.07.2025	40.027	Regelwartungsdienst
24.07.2025	35.910	Kombiinstrument ern; Systemtest/Eigendiagnose
28.08.2024	13.860	Regelwartungsdienst