

Expertise

Protocol number: 46155031
Order No. / Reference: 26525021
Inspection date: 17 Jun 2026

Manufacturer: Mercedes-Benz

Model: GLC 300 d 4Matic 9G-TRONIC Edition AMG Line

VIN: W1NKM0HB2SF347826



Vehicle details

Manufacturer / Type / Model / Equipment

Mercedes-Benz GLC 300 d 4Matic 9G-TRONIC Edition AMG Line

Vehicle Identification number W1NKM0HB2SF347826

Mileage (Read) 22,916 km

First registration 15 Apr 2025

Number of holders 1

Next periodical technical inspection 04/2028

(Report not on hand)

Power / Engine displacement 198 kw / 1,993 ccm

Fuel type / Cylinder Hybrid Diesel / E / 4

Gearbox / Number of gears Automatic / 9

Type of drive All-wheel drive

Type of vehicle SUV

Colour / colour code Polarweiß

Doors / Seats 5 / 5

Upholstery type Alcantara / Leather

Colour of upholstery Black-Anthracite

Re-import no

readiness to drive Roadworthy



Vehicle details

Maintenance booklet / proof	Non-existent	Next maintenance in	
Key is / should be	2 / 2	FZG documents	ZB#2 (B) was available (copy), ZB#1 (S) was not available.
		Letter No.	HM214418
Previous damage / Accident	Detectable	Repainting	None detectable
Inspection conditions	sufficient	Lifting equipment / pit	yes
Test drive	Not performed	Engine function test	Performed
readiness to drive	Roadworthy		
Manufacturer key number/ type code number	2222 / BLA 00367		
Emission standard	EURO6;WLTP;EA;PI/CI;M, N1, N2	fine dust sticker	
Permitted total weight	2,570 kg	Empty weight	

Tyres

Mounted tyres

#	Tyre size	Type of tyre	Manufacturer	Tread depth
1)	235/60 R18 103H	Winter tyres on Light alloy	Continental	8mm / 8mm
2)	235/60 R18 103H	Winter tyres on Light alloy	Continental	8mm / 8mm

Additional tyres

#	Tyre size	Type of tyre	Manufacturer	Tread depth
1)	285/40 R20 108W	Summer tyres on Light alloy	Continental	5 mm

Replacement

Typ	Tyre size	Type of tyre	Manufacturer	Tread depth
Tirefit		Expiration date 03/2030		

Legend: Tread depth information for the left tire is listed first, for the right tire it is listed second on the axle in the direction of travel.



Equipment

Standard equipment

- Adaptive Highbeam Assist
- Airbag: Kneebag for driver
- Airbag: Side airbag for driver and front passenger
- Active Distance Assist DISTRONIC
- Active Lane Keeping Assist
- Ambient lighting
- AMG front apron with sporty air intakes and chrome trim element
- AMG Line interior
- Anti-lock braking system (ABS)
- Traction control (ASR)
- Automatic passenger airbag deactivation
- Brake system with larger brake discs on the front axle
- Diesel particulate filter
- Downhill Speed Regulation (DSR)
- EASY-PACK tailgate
- Illuminated door sills with "Mercedes-Benz" lettering
- Driver display
- Fingerprint scanner
- Rear window heated
- Instrument panel and door sills in ARTICO man-made leather in black nappa look
- Communication module (LTE) for the use of Mercedes me connect services
- LED High Performance Headlights
- Steering: Sport direct steering
- Mercedes-Benz emergency call system
- Navigation accessories: Pre-installation for Live Traffic Information
- Navigation: Hard disk navigation
- Package: Storage
- Package: Chrome Interior Package
- Package: Interior light
- Package: Memory
- Package: Seating comfort
- Package: USB package
- Radio accessories: Digital radio (DAB)
- Tire pressure loss warning
- Wheels: Summer tires
- Windscreen wipers with rain sensor
- Heated seats for driver and front passenger
- Phone accessories: Wireless charging system for mobile devices
- Pre-installation for digital key handover
- Immobiliser
- Central display
- Airbag for driver and front passenger
- Airbag: Center airbag
- Airbag: Windowbag
- Active Brake Assist
- 4MATIC all-wheel drive
- Ambient lighting plus
- AMG floor mats
- AMG Line Exterior
- AMG sports pedal assembly made of brushed stainless steel with black rubber studs
- ATTENTION ASSIST
- Basic services
- Roof rails made of glossy anodized aluminum
- Double cup holder
- Tachometer
- EASY-Pack: Cargo area cover
- Electronic Stability Program (ESP)
- Chassis: Sport chassis
- Transmission: 9G-TRONIC
- Rear window wiper/washer system
- KEYLESS-GO start function
- Climate: THERMATIC automatic climate control
- Radiator grille with Mercedes-Benz pattern and integrated Mercedes star
- Steering wheel: Multifunction sports steering wheel in Nappa leather
- Navigation accessories: Extended MBUX functions
- Navigation accessories: Pre-installation for navigation services
- Navigation: MBUX Navigation Premium
- Package: AMG Line Advanced Plus
- Package: Customization Package
- Package: Boot Comfort Package
- Package: Parking package with 360° camera
- Package: Mirror Package
- Upholstery: ARTICO leatherette/MICROCUT microfiber
- Radio accessories: MBUX multimedia system
- Remote and Charging Services Plus
- Wheel accessories: TIREFIT with tire inflator compressor
- Seats: 4-way lumbar support for driver and front passenger
- Sporty engine sound
- Phone accessories: Smartphone integration
- Cruise control
- High-visibility vest for drivers
- Heat-insulating dark tinted glass
- Central locking with remote control



Extra equipment

- Trailer maneuvering assistant
- Digital Light (HD system with projection module - MULTIBEAM LED background module - Topography compensation keeps the beam range as constant as possible even with changes in altitude - Adaptive Highbeam Assist Plus - ULTRA RANGE highbeam - Active cornering light - Extended fog light, cornering light, country road light, city light, bad weather light, motorway light and motorway high beam - Cornering light with roundabout and intersection function - Off-road light - Adaptive full-LED taillights)
- Package: Driving Assistance Package Plus (Active Distance Assist DISTRONIC, Active Speed Limit Assist, Extended Automatic Restart, Route-Based Speed Adaptation with Traffic Jam Definition, Active Steering Assist, Active Lane Change Assist, Active Emergency Stop Assist with SOS Radio, Emergency Lane Radio, Active Brake Assist, Turn and Intersection Radio, Traffic Jam Emergency Brake Radio, Evasive Steering Assist, Active Lane Keeping Assist, Active Blind Spot Assist, Exit Warning Radio, PRE-SAFE PLUS Pedestrian Warning Function, Traffic Sign Assist, Active Traffic Jam Assist, PRE-SAFE Impulse Side)
- Radio accessories: Sound personalization (A tailor-made listening experience: Personalizing the sound system makes it easy to achieve your perfect sound setup. A setup assistant with an innovative algorithm works with you to determine your music preferences and adjusts the Burmester® sound system to your wishes. The result is saved in a personal profile.)
- Wheel arch trims in body color
- Sunroof: Panoramic sunroof (large glass module made of heat-insulating safety glass - mesh wind deflector in the front area - electric sunshade with one-touch operation - comprehensive protection concept: anti-pinch protection, automatic rain closing, automatic closing when the recirculation function is activated, PRE-SAFE closing function (only in conjunction with PRE-SAFE system))
- Towbar with ESP trailer stabilization
- Chassis: AGILITY CONTROL chassis with selective damping system (The AGILITY CONTROL chassis offers optimal road holding without compromising driving comfort. The passive selective damping system ensures a confident driving experience on any road surface because it automatically optimizes rolling behavior, damping effect and stabilization.)
- Black fabric headliner
- Paint finish: Special paint finish, solid color
- Center console metal structure
- Package: Night (Radiator grille with Mercedes-Benz pattern and louvre in high-gloss black - Attractive 48.3 cm (19") AMG 5-spoke light-alloy wheels in high-gloss black and polished finish 235/55 R19 on 8.0 J x 19 ET 32.5 - AMG front apron with visual underguard in high-gloss black - Belt trim strip and window surrounds in high-gloss black - Exterior mirror housings painted in high-gloss black - Roof rails in matte black, rear apron and diffuser in black)
- Package: Winter Package (heated steering wheel - heated windshield washer system)
- Radio accessories: Burmester 3D surround sound system (15 powerful speakers - DSP amplifier with a total output of 710 W (2 x 120 watts, 7 x 50 watts, 6 x 20 watts) - 2 broadband speakers in the front for 3D sound - Frontbass technology with woofers integrated into the body shell - Sound optimization for the front, rear or all seats - 2 sound presets: "Pure" and "3D Sound" - Equalizer function for adjusting bass, midrange and treble - Noise cancellation (VNC))
- Wheels: 50.8 cm (20") AMG light-alloy wheels in 5-spoke design (aerodynamically optimized, painted black and high-sheen finish - front axle 255/45 R20 on 8.5 J x 20 ET 34.5 and rear axle 285/40 R20 on 9.5 J x 20 ET 35.5)
- Decorative elements: wood, black, open-pore, aluminum lines

Brief expert findings

Documents submitted	At the time of the inspection, the vehicle registration certificate Part 2 (title) was available, but the vehicle registration certificate Part 1 (document) was not. (Copy)
VIN comparison	The vehicle identification number (VIN) was read from the vehicle and its conformity with the submitted documents was confirmed by the undersigned during the inspection.
Inspection	The inspection conditions were sufficient for the assessment of the vehicle. Lifting equipment and/or a pit were available for examining the vehicle.
Test drive	No test drive/shunting maneuver was carried out during the inspection of the vehicle.
Engine function test	An engine test run was performed.
readiness to drive	The vehicle was roadworthy at the time of inspection.

Value reducing factors

No.	Component group	Description
1	Front bumper	Front bumper - Stone chips - Smart repair
2	Misc.	Inspection / maintenance - Due - Perform



Wear and tear

No.	Component group	Description
1	Rear bumper	Rear bumper - Scratch(es) - No deduction
2	Misc.	Inspection / maintenance - No evidence - No deduction

The vehicle shows signs of wear and tear commensurate with its age and use.

Missing parts

Description

2nd wheel set - 2nd wheel set (3 Räder fehlen)

Previous damages

No.	Previous damage	Extent of damage (Net)
1	Side right, Underbody, Provided by user / customer, from 22 Sept 2025	949,71 €

Order/Scope of Order

An order was placed to prepare a sales report for the described vehicle. This report includes the following:

- Description of key vehicle information
- Documentation of equipment features
(*Delivery by third-party service providers*)
- Documentation of damage, defects, missing parts
- Documentation of prior damage, unrepaired prior damage, repainting
- A brief visual or functional inspection of the equipment details, if possible.
(*Functional testing of driver assistance systems is not included in the scope of services!*)
- a photographic documentation of the vehicle

Basis for the order

This product is based on the guidelines for vehicle returns and valuations published by Alphabet Fleet GmbH. The expert makes the specific findings in each individual case objectively, within the framework of the prescribed standards, based on their own expertise.

The vehicle inspection takes place in a fully assembled, unassembled state.

Damage or defects that can only be detected during disassembly/diagnostic work or through further investigation remain within the realm of prognostic risk. An increased risk exists due to concealed defects caused by fraudulent misrepresentation and which were not identifiable by the expert.

Damage or defects resulting from normal use or wear and tear of the vehicle will be accepted in accordance with the applicable standard.

There was no explicit identification or monetary consideration of the expected features within the product.

Features which, in their nature and extent, slightly exceed normal use but do not constitute unacceptable damage, will be documented and indicated as signs of wear, if applicable.

Damage or defects that, according to the applicable standard, can no longer be attributed to normal use or wear and tear are listed under "Value Reducing Factors" in the product description.

Depending on the product specification, a monetary ID can be provided. If this takes place, the costs can be 100% d or pro rata depending on the vehicle's age and mileage.

Previous damages

According to available information previous damages were repaired at the vehicle. Traces of repairs, which allow conclusions about the area of repair, were not recognizable during the inspection.



Figure 1: Diagonal front (left)



Figure 2: Diagonal front (right)



Figure 3: Diagonal rear (left)



Figure 4: Diagonal rear (right)



Figure 5: Interior - front



Figure 6: Interior - rear



Figure 7: Instrument cluster



Figure 8: Instrument panel



Figure 9: Interior 360° view



Figure 10: Cargo area



Figure 11: VIN



Figure 12: Mounted tyres



Figure 13: Documents



Figure 14: Additional tyres



Figure 15: Navigation



Figure 16: Misc.



Figure 17: Misc.

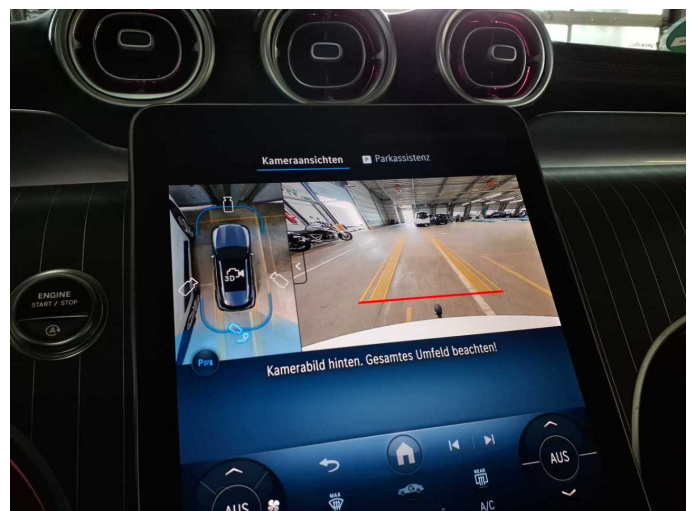


Figure 18: Misc.



Figure 19: Misc.



Figure 20: Misc.

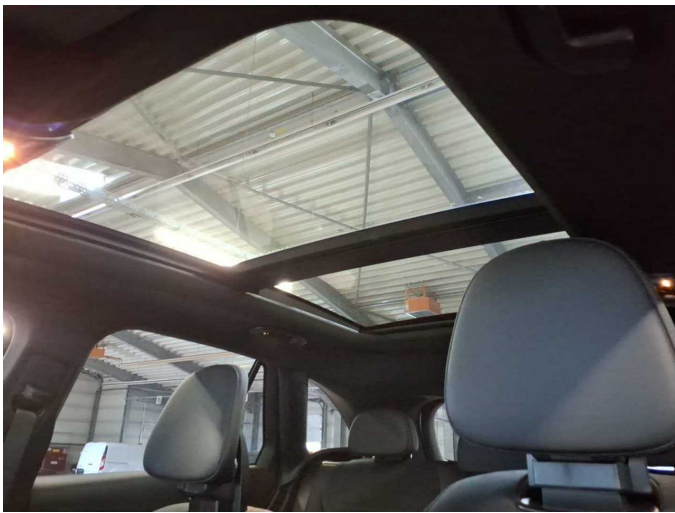


Figure 21: Misc.



Figure 22: Misc.



Figure 23: Misc.



Figure 24: Misc.



Figure 25: Misc.



Figure 26: Misc.



Figure 27: Misc.



Figure 28: Misc.



Figure 29: Misc.



Figure 30: Misc.



Damage 1: Front bumper: Front bumper - Stone chips - Smart repair



Damage 1: Front bumper: Front bumper - Stone chips - Smart repair



Damage 2: Misc.: Inspection / maintenance - Due - Perform



Missing part 1: 2nd wheel set: 2nd wheel set (3 Räder fehlen) - Missing - Replace



Missing part 1: 2nd wheel set: 2nd wheel set (3 Räder fehlen) - Missing - Replace



Missing part 1: 2nd wheel set: 2nd wheel set (3 Räder fehlen) - Missing - Replace