

Expertise

Protocol number: 46181476
Order No. / Reference: 26451302
Inspection date: 18 Jun 2026

Manufacturer: Skoda

Model: Superb Combi 2.0 TDI DSG Ambition

VIN: TMBJH7NP7N7046757



Vehicle details

Manufacturer / Type / Model / Equipment

Skoda Superb Combi 2.0 TDI DSG Ambition

Vehicle Identification number TMBJH7NP7N7046757

Mileage (Read) 177,706 km

First registration 2 Jun 2022

Number of holders 1

Next periodical technical inspection 06/2027
(Report on hand)

Power / Engine displacement 110 kw / 1,968 ccm

Fuel type / Cylinder Diesel / 4

Gearbox / Number of gears Automatic / 7

Type of drive Front drive

Type of vehicle Station wagon

Colour / colour code Space-Violett Metallic

Doors / Seats 5 / 5

Upholstery type Cloth

Colour of upholstery Black-Anthracite



Equipment

Standard equipment

- Closed storage compartments behind the wheel arches in the trunk, including cargo elements
- Airbag, driver's knee airbag
- Airbag, front side airbags
- Traction control (ASR)
- Exterior mirrors and door handles in body color
- Illuminated glove compartment
- Hydraulic brake assist (HBA)
- Roof rails, black
- Diesel particulate filter and SCR catalyst
- Tachometer
- Easy Start (start-stop button instead of ignition lock)
- Electronic transverse differential lock (XDS+)
- Driving light assistant and rain sensor
- Front radar assistant including city emergency braking function
- Transmission: 7-speed dual-clutch transmission (DSG)
- Tinted windows
- Rear window wiper including windshield washer system
- Child safety lock for rear doors & windows, electric
- Air Care Climatronic air conditioning (2-zone)
- Front and rear headrests are height-adjustable.
- LED taillights
- Steering wheel: height and reach adjustable
- Reading lights at the front and rear of the headliner
- Front center armrest with storage compartment
- Engine drag torque control (MSR)
- LED fog lights with integrated cornering lights
- Upholstery: Cloth
- Radio accessories: In-car communication
- Radio accessories: USB ports at the front (Type-C) and USB charging port (Type-A) in the center armrest
- Tire mobility kit
- Heated windshield washer nozzles
- Superb seat belts
- Seats: Height-adjustable front seats
- SKODA Care Connect
- Start/stop system including brake energy recuperation
- 12V socket in the trunk
- Telephone: Convenient Bluetooth hands-free phone system
- Immobiliser
- Storage compartments
- Airbag, driver and switchable passenger airbag
- Airbag, head airbags
- Anti-lock braking system (ABS)
- Electrically adjustable and heated exterior mirrors
- Electrically folding exterior mirrors
- Hill start assist
- Grey headliner
- Decorative inlay silver brushed
- Digital instrument cluster (Virtual Cockpit) 10.2"
- Third brake light
- Electronic parking brake including auto-hold function
- Electronic Stability Control (ESC)
- Electric windows front and rear, including anti-pinch protection and child safety lock
- Cruise control system (cruise control) including speed limiter
- Heated rear window
- ISOFIX preparation on the outer rear seats, including top tether
- Boot cover, roll-up and removable, semi-automatic
- LED low beam
- Steering wheel: 2-spoke leather steering wheel with multifunction buttons
- Rear center armrest with cup holders and pass-through option
- Multi-collision brake
- Rear parking sensors
- Radio accessories: Digital radio reception DAB+
- Radio accessories: Voice control
- Radio accessories: Wireless SmartLink for Apple CarPlay
- Tire pressure monitoring
- Wheels: 16" Orion alloy wheels
- Electromechanical power steering
- Seats: Adjustable lumbar support in the front seats
- Seats: Rear seat backrest split 60:40, foldable
- Sun visor on driver and passenger side with illuminated make-up mirror
- 12V socket in the center console, front and rear
- Chrome-plated elements
- Lashing eyes in the trunk
- Central locking with remote control



Extra equipment

- Swiveling trailer hitch including trailer stabilization
- Paintwork: Individual
- Package: Business Amundsen (DSG) (Amundsen navigation system - voice control - Wi-Fi hotspot - Wireless Smartlink for Apple CarPlay - 8" capacitive touchscreen in glass design - Phonebox - Traveller assistance system (traffic sign recognition, predictive lane keeping assist pACC, adaptive lane keeping assist, emergency and traffic jam assist, capacitive steering wheel with hands-off detection) - 230 V socket and 3 USB ports, tablet holder - Sunset - Infotainment Online (3-year subscription))
- Divider grille Skoda Superb Combi
- Chassis: Sport chassis (15 mm lowering)
- Network program in the trunk
- Package: Comfort Plus (Combi DSG) (3-zone Climatronic - heated front and rear seats - Lounge Step floor mats - KESSY - 3rd vehicle key - comfort opening for the tailgate - heated steering wheel (with shift paddles) - sunshade for the rear side windows)
- Package: Transport (Combi) (Interior waste bin - Boot net - Variable loading floor - Luggage net partition)
- Front and rear parking sensors
- Auxiliary heater with radio remote control

Brief expert findings

Documents submitted	At the time of the inspection, the vehicle registration certificate Part 2 (title) was available, but the vehicle registration certificate Part 1 (document) was not. (Copy)
VIN comparison	The vehicle identification number (VIN) was read from the vehicle and its conformity with the submitted documents was confirmed by the undersigned during the inspection.
Inspection	The inspection conditions were sufficient for the assessment of the vehicle. No lifting equipment or pit was available for inspecting the vehicle. Therefore, inspection of the vehicle's underside was only possible to a limited extent.
Test drive	No test drive/shunting maneuver was carried out during the inspection of the vehicle.
Engine function test	An engine test run was performed.

Value reducing factors

No.	Component group	Description
1	Equipment	Tirefit filler - Expired - Replace
2	Trim / covers	Floor mats - Broken / torn - Replace
3	Door - front right side	Door handle - outside - Scratch(es) - Smart repair
4	Side panel - rear left side	Side panel - Scratch(es) - Smart repair
5	Front bumper	Front bumper (Unterhalb) - Scratched - Smart repair

Wear and tear

No.	Component group	Description
1	Bonnet	Bonnet - Stone chips - No deduction
2	Vehicle glazing	Windscreen - Stone chips - No deduction
3	Interior	Interior - Soiled - No deduction
4	Rear bumper	Rear bumper - Scratch(es) - No deduction

The vehicle shows signs of wear and tear commensurate with its age and use.

Missing parts

Description

Documents - Service book (Digitaler Ausdruck)



Order/Scope of Order

An order was placed to prepare a sales report for the described vehicle. This report includes the following:

- Description of key vehicle information
- Documentation of equipment features
(Delivery by third-party service providers)
- Documentation of damage, defects, missing parts
- Documentation of prior damage, unrepaired prior damage, repainting
- A brief visual or functional inspection of the equipment details, if possible.
(Functional testing of driver assistance systems is not included in the scope of services!)
- a photographic documentation of the vehicle

Basis for the order

This product is based on the guidelines for vehicle returns and valuations published by Alphabet Fleet GmbH. The expert makes the specific findings in each individual case objectively, within the framework of the prescribed standards, based on their own expertise.

The vehicle inspection takes place in a fully assembled, unassembled state.

Damage or defects that can only be detected during disassembly/diagnostic work or through further investigation remain within the realm of prognostic risk. An increased risk exists due to concealed defects caused by fraudulent misrepresentation and which were not identifiable by the expert.

Damage or defects resulting from normal use or wear and tear of the vehicle will be accepted in accordance with the applicable standard.

There was no explicit identification or monetary consideration of the expected features within the product.

Features which, in their nature and extent, slightly exceed normal use but do not constitute unacceptable damage, will be documented and indicated as signs of wear, if applicable.

Damage or defects that, according to the applicable standard, can no longer be attributed to normal use or wear and tear are listed under "Value Reducing Factors" in the product description.

Depending on the product specification, a monetary ID can be provided. If this takes place, the costs can be 100% d or pro rata depending on the vehicle's age and mileage.

Previous damages

No apparent prior damage that had been repaired could be found on the vehicle.

Comments

- Die Unterbodenbesichtigung war nur ebenerdig & eingeschränkt möglich. Mehrkosten möglich.

-Der montierte Winterradsatz ist kein Bestandteil des Auslieferungsumfangs.



Figure 1: Diagonal front (left)



Figure 2: Diagonal front (right)



Figure 3: Diagonal rear (left)



Figure 4: Diagonal rear (right)



Figure 5: Interior - front



Figure 6: Interior - rear



Figure 7: Instrument cluster



Figure 8: Instrument panel



Figure 9: Interior 360° view



Figure 10: Cargo area



Figure 11: VIN



Figure 12: Mounted tyres



Figure 13: Documents



Figure 14: Documents



Figure 15: Documents



Figure 16: Additional tyres



Figure 17: Navigation



Figure 18: Misc.



Figure 19: Misc.



Figure 20: Misc.



Figure 21: Misc.



Figure 22: Misc.

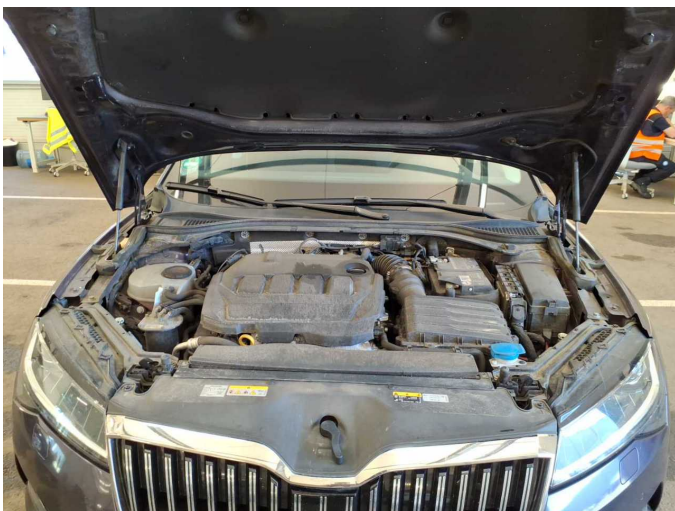


Figure 23: Misc.

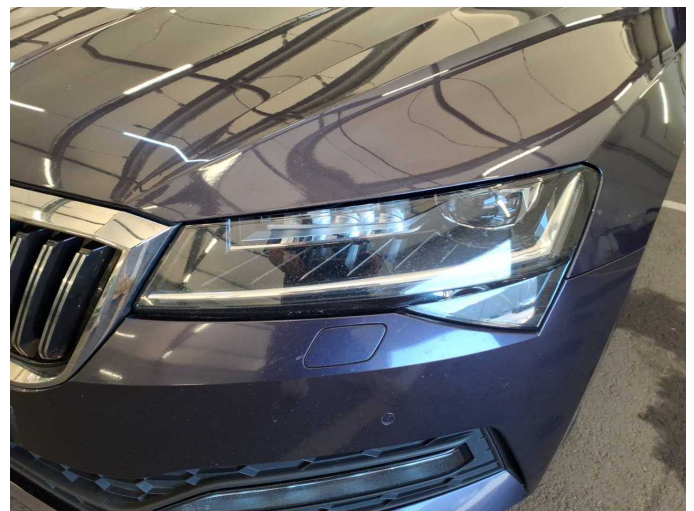


Figure 24: Misc.



Figure 25: Misc.



Figure 26: Misc.

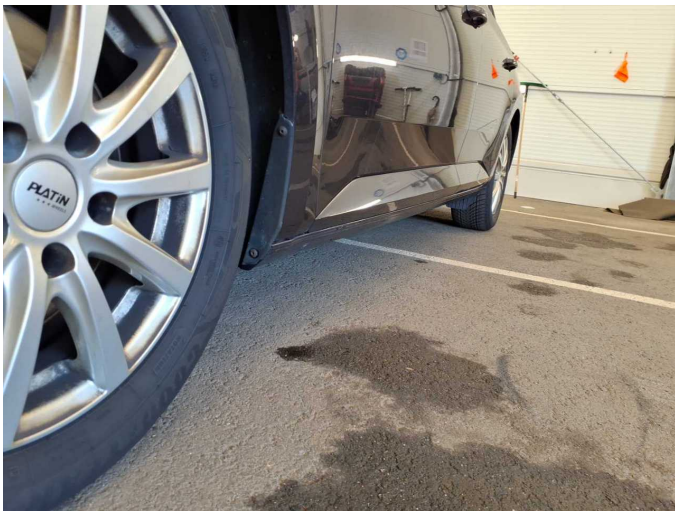


Figure 27: Misc.



Figure 28: Misc.

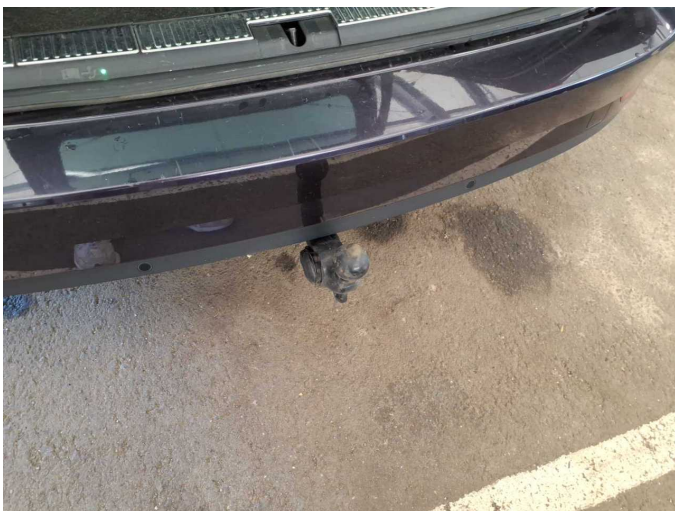


Figure 29: Misc.



Figure 30: Misc.



Figure 31: Misc.



Damage 1: Equipment: Tirefit filler - Expired - Replace



Damage 2: Trim / covers: Floor mats - Broken / torn - Replace



Damage 3: Door - front right side: Door handle - outside - Scratch(es) - Smart repair



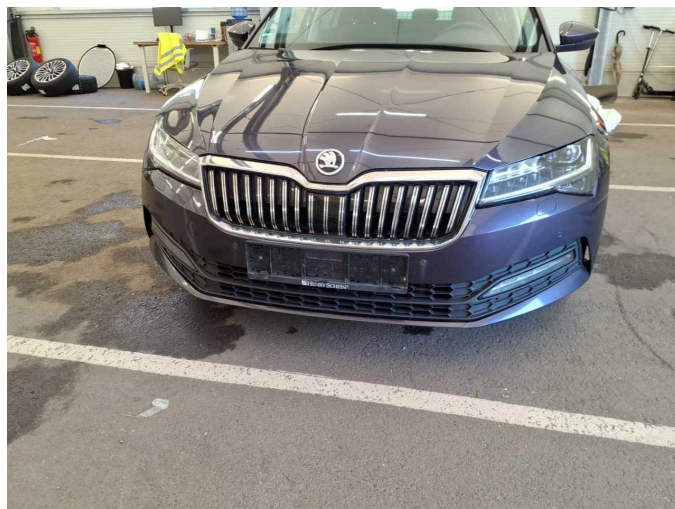
Damage 3: Door - front right side: Door handle - outside - Scratch(es) - Smart repair



Damage 4: Side panel - rear left side: Side panel - Scratch(es) - Smart repair



Damage 4: Side panel - rear left side: Side panel - Scratch(es) - Smart repair



Damage 5: Front bumper: Front bumper (Unterhalb) - Scratched - Smart repair



Damage 5: Front bumper: Front bumper (Unterhalb) - Scratched - Smart repair



Wartungshistorie

(gemäß Auftraggeber Informationen)

Fahrgestellnummer: TMBJH7NP7N7046757
Hersteller / Modell: SKODA SKODA Superb Combi 2.0 TDI DSG Ambition

Datum	KM-Stand	Beschreibung
29.10.2025	152.004	Motoröl b. Wartung; Ölfilter ern; Regelwartungsdienst; Wartung Sonstiges
23.06.2025	130.223	AU; Bremse Sonstiges; Bremsklötze hinten; Bremsscheiben + Klötze v; Bremsscheiben hinten; Bremsscheiben vorne; Wartung Sonstiges
23.04.2025	122.395	Getriebeöl ern/prüfen; Motoröl b. Wartung; Ölfilter ern; Regelwartungsdienst; Wartung Sonstiges
22.07.2024	92.936	Bremse Sonstiges; Bremsflüssigkeit; Bremsflüssigkeit ern; Bremsklötze hinten; Bremsklötze vorne; Kraftstofffilter ern; Luftfiltereinsatz ern; Motoröl b. Wartung; Ölfilter ern; Regelwartungsdienst; Wartung Sonstiges
17.05.2024	59.561	Motoröl b. Wartung; Ölfilter ern; Regelwartungsdienst; Wartung Sonstiges
14.09.2023	52.438	Bremse Sonstiges; Bremsklötze hinten; Bremsklötze vorne; Bremsscheiben hinten; Bremsscheiben vorne
14.03.2023	29.778	Motoröl b. Wartung; Ölfilter ern; Regelwartungsdienst; Wartung Sonstiges