

Expertise

Protocol number: 45918336
Order No. / Reference: 26443800
Inspection date: 10 Jun 2026

Manufacturer: Volkswagen

Model: Tiguan 2.0 TDI SCR 4MOTION DSG Life

VIN: WVGZZZ5NXPW075605



Vehicle details

Manufacturer / Type / Model / Equipment

Volkswagen Tiguan 2.0 TDI SCR 4MOTION DSG Life

Vehicle Identification number WVGZZZ5NXPW075605

Mileage (Read) 171,244 km

First registration 15 May 2023

Number of holders 1

Power / Engine displacement 110 kw / 1,968 ccm

Fuel type / Cylinder Diesel / 4

Gearbox / Number of gears Automatic / 7

Type of drive All-wheel drive

Type of vehicle SUV

Colour / colour code Reflexsilber-metallic
(A7W)

Doors / Seats 5 / 5

Upholstery type Cloth

Colour of upholstery Anthracite-Grey



Equipment

Standard equipment

- Airbag for driver and front passenger including knee airbag on the driver's side (passenger airbag deactivation - knee airbag on the driver's side)
- Adaptive Cruise Control ACC (DSG) (Adaptive Cruise Control ACC "stop & go", with speed limiter - Emergency Brake Assist "Front Assist" (for ACC up to 210 km/h))
- Diesel particulate filter
- Parking aid (warning signals for obstacles in the front and rear area)
- Automatic headlight control with LED daytime running lights ("Coming home" and "Leaving home" function)
- Electric windows front and rear
- Pedestrian detection
- Rear window heated
- Interior mirror automatically dimming
- LED license plate lighting
- Air conditioning system "Air Care Climatronic" (with active combination filter, rear controls and 3-zone temperature control)
- Front headrests (safety-optimized - adjustable lengthwise and height)
- Steering wheel: Multifunction steering wheel in leather, with paddle shifters
- front center armrest
- Fatigue detection
- Emergency call service (no registration required, service is activated upon delivery)
- Radio "Composition" (16.5 cm touchscreen - dual tuner with phase diversity for best possible radio reception - Radio Data System (RDS) - MP3 playback - USB-C interface with Apple compatibility - 4 x 20 watt output power - telephone interface - DAB+ digital radio reception)
- Wheels: Tire Mobility Set omitted
- Gearshift knob in leather
- Drawers under the front seats
- Seat belts: Three-point automatic seat belts at the front with height adjustment and belt tensioner (3 three-point automatic seat belts at the rear including belt tensioner for the outer rear seats - warning tone and light for unfastened seat belts at the front and rear)
- Seats: Rear bench seat asymmetrically split (longitudinally sliding and folding - with pass-through and center armrest)
- Start-stop system with brake energy recuperation
- Power outlet: 2 USB-C ports on the front
- Power outlet: 2 USB-C ports on the front (charging power up to 45 W)
- Electronic immobilizer
- Central locking without safe locking, with remote control and 2 remote keys
- Airbag: Head airbag system for front and rear passengers including front side airbags
- Permanent 4MOTION all-wheel drive
- Hill descent control
- third brake light
- black roof rails
- Tachometer
- Electronic parking brake including auto-hold function
- Electronic stability program with counter-steering support (including ABS, ASR, EDS, MSR and trailer stabilization)
- Driving profile selection
- High beam control Light Assist
- Transmission: 7-speed DSG
- rear window wiper
- ISOFIX mounting points, also for i-Size child seats (device for attaching 2 child seats to the rear seats)
- Instrument cluster with electronic speedometer (odometer, trip meter, tachometer)
- Rear headrests (3)
- LED reading lights, 2 in the front and 2 in the rear
- LED headlights with LED daytime running lights
- Light in the front footwell
- Manual headlight range adjustment
- Multifunction display "Premium" (with multi-color display)
- Non-smoking version (storage compartment and 12V socket at the front)
- Upholstery: Cloth
- Radio accessories: 8 speakers
- Rain sensor
- Tire pressure monitoring system
- Wheels: AirStop tires 235/55 R 18, rolling resistance class A
- Wheels: Light alloy (4) "Frankfurt" 7 J x 18 (tires 235/55 R 18)
- Electromechanical power steering (speed-dependent control)
- Seats: Front passenger seat backrest folds down completely
- Seats: Comfort seats in the front
- Seats: Lumbar support in the front
- Seats: Front seats with height adjustment
- Lane keeping assistant "Lane Assist"
- 12-volt power outlet (on the rear center console and in the luggage compartment)
- Textile floor mats front and rear
- First aid kit, warning triangle and high-visibility vest
- Green thermal insulation glazing, sides and rear



Extra equipment

- Airbag: Side airbags for the outer rear seats (including front side airbags and head airbag system)
- Electrically adjustable, folding, and heated exterior mirrors, ambient lighting, passenger-side mirror lowering function
- luggage compartment tray
- Navigation system "Discover Media" incl. "Streaming & Internet"
- Package: Business Premium (DSG) (App-Connect incl. App-Connect Wireless for Apple CarPlay and Android Auto - Leather multifunction steering wheel, heated, with shift paddles - Automatically heated front windscreen washer nozzles - Voice control - "Comfort" telephone interface with inductive charging function - Heated front seats)
- Package: Cargo package including space- and weight-saving spare wheel (230V socket in the luggage compartment - on-board tools and jack - luggage compartment lighting - luggage compartment floor height-adjustable in 2 stages - space- and weight-saving spare wheel)
- All-weather floor mats, front, set of 2
- Foldable towbar (electric release)
- Wirelessly heated windshield (infrared-reflective, noise-reducing)
- Paint finish: Metallic
- Package: "IQ.DRIVE" assistance package including "Emergency Assist", without "Side Assist" (Proactive occupant protection system - "Travel Assist" driving assistant, "Lane Assist" lane keeping assistant and "Emergency Assist" - "Park Assist" parking assistant including parking aid - traffic sign recognition)
- Package: Cargo Package "Plus" (luggage net - net partition)
- Park Assist system including parking aid
- Tire pressure monitoring system
- Windows: Rear side windows and rear window tinted
- Auxiliary heating and ventilation (with radio remote control and timer)

Brief expert findings

Documents submitted	At the time of the inspection, the vehicle registration certificate Part 2 (title) was available, but the vehicle registration certificate Part 1 (document) was not. (Copy)
VIN comparison	The vehicle identification number (VIN) was read from the vehicle and its conformity with the submitted documents was confirmed by the undersigned during the inspection.
Inspection	The inspection conditions were sufficient for the assessment of the vehicle. No lifting equipment or pit was available for inspecting the vehicle. Therefore, inspection of the vehicle's underside was only possible to a limited extent.
Test drive	No test drive/shunting maneuver was carried out during the inspection of the vehicle.
Engine function test	An engine test run was performed.

Value reducing factors

No.	Component group	Description
1	Misc.	Main inspection - No evidence - No deduction
2	Door - front left side	Door edge - Scratch(es) - Smart repair
3	Body	C-pillar - right side - dent(s) - Smart repair
4	Boot lid / rear door	Boot lid - dent(s) - Smooth repair work
5	Front bumper	Front bumper (Unterteil) - Scratch(es) - Smart repair
6	Rear bumper	Rear bumper - Scratch(es) - Paint
7	Door - front right side	Door - Dent / paintcoat damage - Repair and paint
8	Front bumper	Front bumper - Scratch(es) - Paint
9	Bonnet	Bonnet - Stone chips - Paint

Wear and tear

No.	Component group	Description
1	Vehicle glazing	Windscreen - Stone chips - No deduction

The vehicle shows signs of wear and tear commensurate with its age and use.



Missing parts

Description

Interior - Boot cover / roller cover

Previous damages

No. Previous damage

Extent of
damage (Net)

1 Front, Side right, Underbody, Provided by user / customer, from 27 Jun 2024

4.086,66 €

Order/Scope of Order

An order was placed to prepare a sales report for the described vehicle. This report includes the following:

- Description of key vehicle information
- Documentation of equipment features
(*Delivery by third-party service providers*)
- Documentation of damage, defects, missing parts
- Documentation of prior damage, unrepaired prior damage, repainting
- A brief visual or functional inspection of the equipment details, if possible.
(*Functional testing of driver assistance systems is not included in the scope of services!*)
- a photographic documentation of the vehicle

Basis for the order

This product is based on the guidelines for vehicle returns and valuations published by Alphabet Fleet GmbH. The expert makes the specific findings in each individual case objectively, within the framework of the prescribed standards, based on their own expertise.

The vehicle inspection takes place in a fully assembled, unassembled state.

Damage or defects that can only be detected during disassembly/diagnostic work or through further investigation remain within the realm of prognostic risk. An increased risk exists due to concealed defects caused by fraudulent misrepresentation and which were not identifiable by the expert.

Damage or defects resulting from normal use or wear and tear of the vehicle will be accepted in accordance with the applicable standard.

There was no explicit identification or monetary consideration of the expected features within the product.

Features which, in their nature and extent, slightly exceed normal use but do not constitute unacceptable damage, will be documented and indicated as signs of wear, if applicable.

Damage or defects that, according to the applicable standard, can no longer be attributed to normal use or wear and tear are listed under "Value Reducing Factors" in the product description.

Depending on the product specification, a monetary ID can be provided. If this takes place, the costs can be 100% d or pro rata depending on the vehicle's age and mileage.

Previous damages

According to available information previous damages were repaired at the vehicle. Traces of repairs, which allow conclusions about the area of repair, were not recognizable during the inspection.



Figure 1: Diagonal front (left)



Figure 2: Diagonal front (right)



Figure 3: Diagonal rear (left)



Figure 4: Diagonal rear (right)



Figure 5: Interior - front

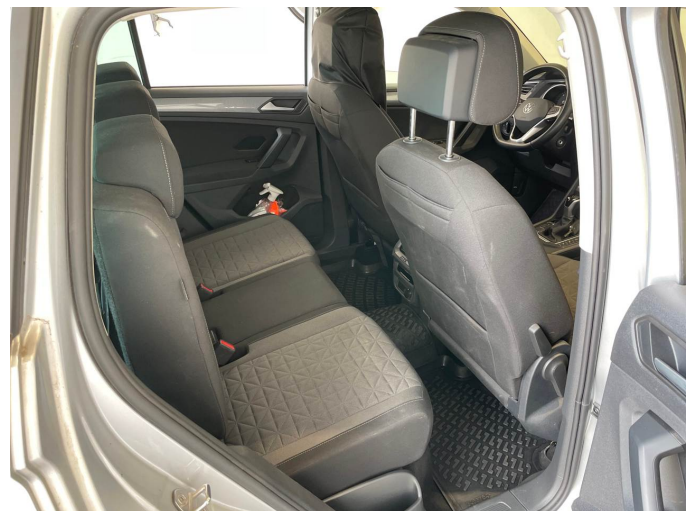


Figure 6: Interior - rear



Figure 7: Instrument cluster



Figure 8: Instrument panel



Figure 9: Interior 360° view



Figure 10: Cargo area

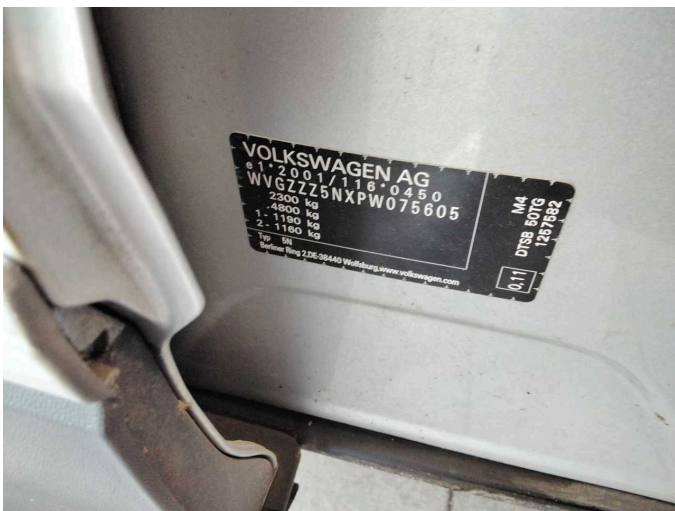


Figure 11: VIN



Figure 12: Mounted tyres



Figure 13: Documents



Figure 14: Additional tyres



Figure 15: Navigation

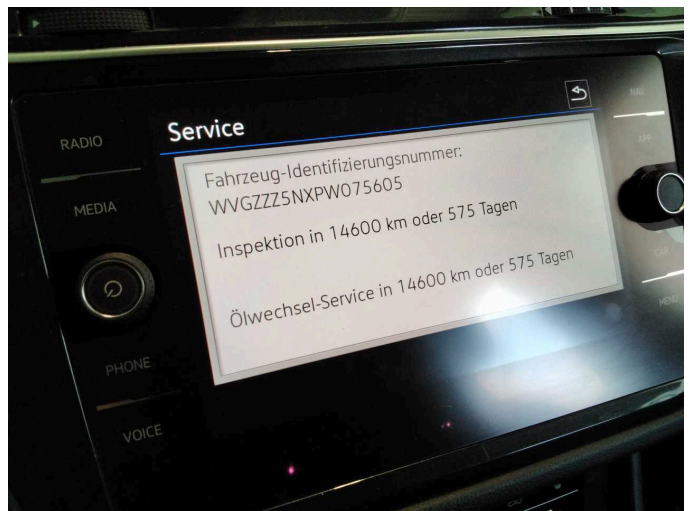


Figure 16: Misc.

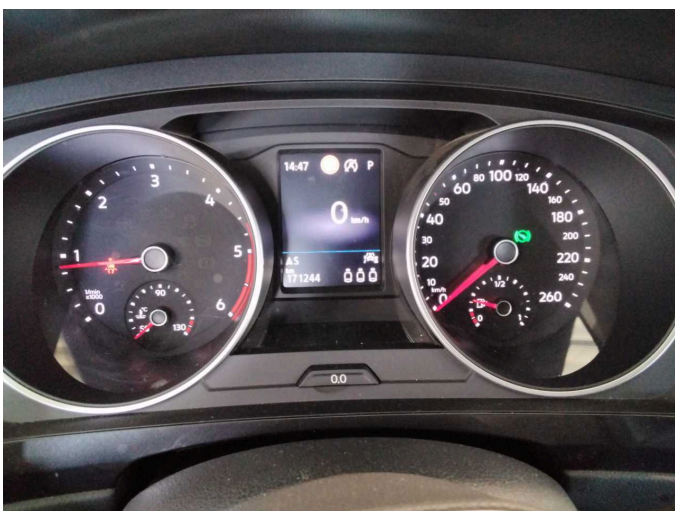


Figure 17: Misc.

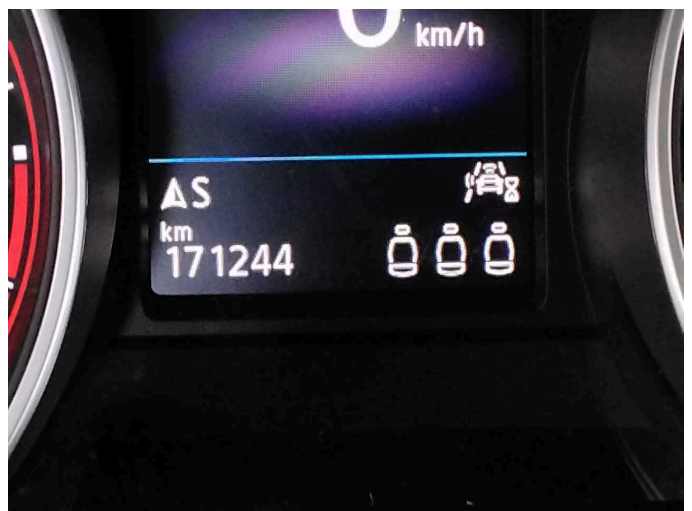


Figure 18: Misc.



Figure 19: Misc.



Figure 20: Misc.



Figure 21: Misc.



Figure 22: Misc.

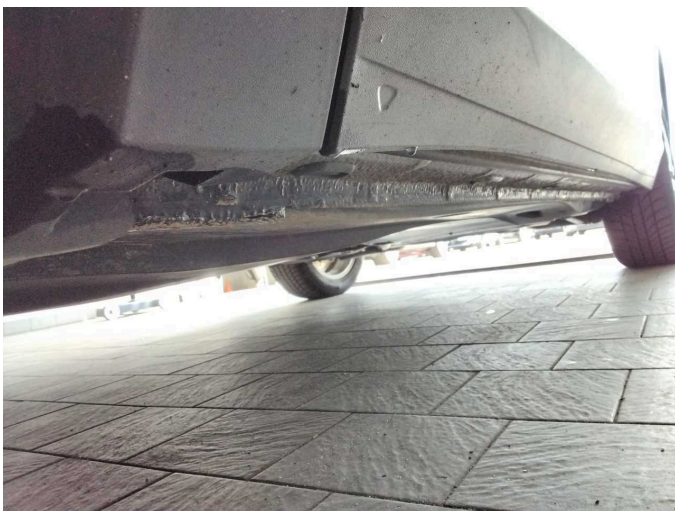


Figure 23: Misc.



Figure 24: Misc.



Figure 25: Misc.



Figure 26: Misc.



Figure 27: Misc.



Figure 28: Misc.

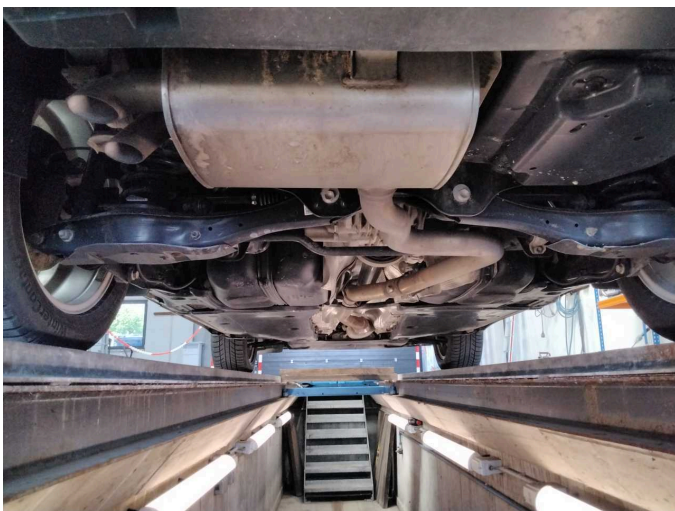


Figure 29: Misc.



Figure 30: Misc.



Figure 31: Misc.



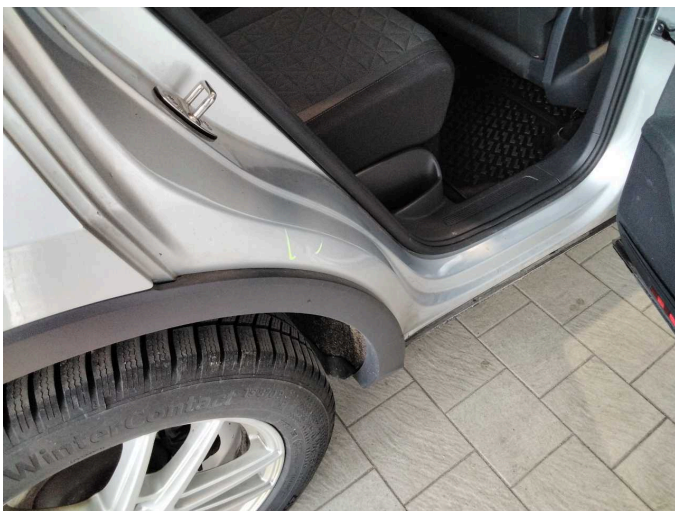
Damage 2: Door - front left side: Door edge - Scratch(es) - Smart repair



Damage 2: Door - front left side: Door edge - Scratch(es) - Smart repair



Damage 2: Door - front left side: Door edge - Scratch(es) - Smart repair



Damage 3: Body: C-pillar - right side - dent(s) - Smart repair



Damage 3: Body: C-pillar - right side - dent(s) - Smart repair



Damage 4: Boot lid / rear door: Boot lid - dent(s) - Smooth repair work



Damage 4: Boot lid / rear door: Boot lid - dent(s) - Smooth repair work



Damage 4: Boot lid / rear door: Boot lid - dent(s) - Smooth repair work



Damage 5: Front bumper: Front bumper (Unterteil) - Scratch(es) - Smart repair



Damage 5: Front bumper: Front bumper (Unterteil) - Scratch(es) - Smart repair



Damage 5: Front bumper: Front bumper (Unterteil) - Scratch(es) - Smart repair



Damage 6: Rear bumper: Rear bumper - Scratch(es) - Paint



Damage 6: Rear bumper: Rear bumper - Scratch(es) - Paint



Damage 6: Rear bumper: Rear bumper - Scratch(es) - Paint



Damage 6: Rear bumper: Rear bumper - Scratch(es) - Paint



Damage 6: Rear bumper: Rear bumper - Scratch(es) - Paint



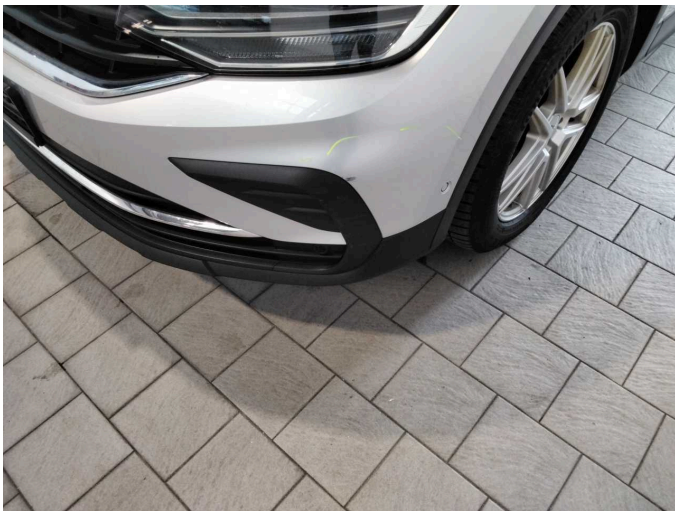
Damage 6: Rear bumper: Rear bumper - Scratch(es) - Paint



Damage 7: Door - front right side: Door - Dent / paintcoat damage - Repair and paint



Damage 7: Door - front right side: Door - Dent / paintcoat damage - Repair and paint



Damage 8: Front bumper: Front bumper - Scratch(es) - Paint



Damage 8: Front bumper: Front bumper - Scratch(es) - Paint



Damage 9: Bonnet: Bonnet - Stone chips - Paint



Damage 9: Bonnet: Bonnet - Stone chips - Paint



Damage 9: Bonnet: Bonnet - Stone chips - Paint



Damage 9: Bonnet: Bonnet - Stone chips - Paint



Damage 9: Bonnet: Bonnet - Stone chips - Paint



Damage 9: Bonnet: Bonnet - Stone chips - Paint



Damage 9: Bonnet: Bonnet - Stone chips - Paint



Wear and tear 1: Vehicle glazing: Windscreen - Stone chips - No deduction



Missing part 1: Interior: Boot cover / roller cover - Missing - Replace



Wartungshistorie

(gemäß Auftraggeber Informationen)

Fahrgestellnummer: WVGZZZ5NXPW075605
Hersteller / Modell: VOLKSWAGEN VOLKSWAGEN Tiguan 2.0 TDI SCR 4MOTION
DSG Life

Datum	KM-Stand	Beschreibung
06.01.2026	155.769	Getriebeöl ern/prüfen; Motoröl b. Wartung; Ölfilter ern; Regelwartungsdienst; Systemtest/Eigendiagnose; Wartung Sonstiges
30.09.2025	131.597	Bremse Sonstiges; Reparatur Sonstiges
13.08.2025	116.307	Bremse Sonstiges; Bremsflüssigkeit; Bremsflüssigkeit ern; Bremsklötze vorne; Getriebeöl ern/prüfen; Kraftstofffilter ern; Luftfiltereinsatz ern; Motoröl b. Wartung; Ölfilter ern; Ölwechsel - Hinterachse; Regelwartungsdienst; Reparatur Sonstiges; Systemtest/Eigendiagnose
15.02.2025	78.956	Bremse Sonstiges; Bremsklötze hinten; Bremsscheiben + Klötze h; Bremsscheiben hinten
21.08.2024	59.485	Regelwartungsdienst; Wartung Sonstiges
19.07.2024	55.396	Motoröl b. Wartung; Ölfilter ern; Ölwechsel; Wartung Sonstiges
12.03.2024	29.925	Bremse Sonstiges; Bremsklötze vorne; Bremsscheiben vorne; Regelwartungsdienst; Wartung Sonstiges
13.02.2024	25.236	Motoröl b. Wartung; Ölfilter ern; Ölwechsel; Wartung Sonstiges