

Expertise

Protocol number: 45918363
Order No. / Reference: 26416993
Inspection date: 11 Jun 2026

Manufacturer: Mercedes-Benz

Model: GLC-Coupe 220 d 4Matic 9G-TRONIC

VIN: W1N0J1FB3PG151694



Vehicle details

Manufacturer / Type / Model / Equipment

Mercedes-Benz GLC-Coupe 220 d 4Matic 9G-TRONIC

Vehicle Identification number W1N0J1FB3PG151694

Mileage (Read) 124,801 km

First registration 30 Jan 2023

Number of holders 1

Power / Engine displacement 143 kw / 1,950 ccm

Fuel type / Cylinder Diesel / 4

Gearbox / Number of gears Automatic / 9

Type of drive All-wheel drive

Type of vehicle SUV

Colour / colour code HIGHTECHSILBER
METALLIC-LACKE

Doors / Seats 5 / 5

Upholstery type Artificial leather

Colour of upholstery Black



Vehicle details

Maintenance booklet / proof	Non-existent	Next maintenance in	128 Tag(e)
Key is / should be	2 / 2	FZG documents	ZB#2 (B) was available (copy), ZB#1 (S) was not available.
		Letter No.	GQ133355
Previous damage / Accident	None detectable	Repainting	Detectable
Inspection conditions	sufficient	Lifting equipment / pit	yes
Test drive	Not performed	Engine function test	Performed
Manufacturer key number/ type code number	2222 / AKF 00134		
Emission standard	EURO6;WLTP;AP;PI/CI; M, N1 I	fine dust sticker	
Permitted total weight	2,500 kg	Empty weight	

Tyres

Mounted tyres

#	Tyre size	Type of tyre	Manufacturer	Tread depth
1)	235/60 R18 103H	Winter tyres on Light alloy	Bridgestone	5mm / 5mm
2)	235/60 R18 103H	Winter tyres on Light alloy	Bridgestone	4mm / 4mm

Additional tyres

#	Tyre size	Type of tyre	Manufacturer	Tread depth
1)	235/60 R18 103V	Summer tyres on Light alloy	Bridgestone	4mm / 1mm
2)	235/60 R18 103V	Summer tyres on Light alloy	Bridgestone	6mm / 6mm

Legend: Tread depth information for the left tire is listed first, for the right tire it is listed second on the axle in the direction of travel.



Equipment

Standard equipment

- | | |
|--|---|
| <ul style="list-style-type: none"> • Storage compartments • Airbag: Kneebag for driver • Airbag: Windowbags • 4MATIC all-wheel drive • ATTENTION ASSIST • Heated exterior mirrors (left and right), electrically adjustable from inside • Tachometer • DYNAMIC SELECT • EASY-Pack cargo cover (removable) • Electronic Stability Program (ESP) • Chassis: Sport chassis • electric parking brake • Transmission: 9G-TRONIC • Black fabric headliner • Climate: THERMATIC automatic climate control with 2 climate zones • Communication module (LTE) for the use of Mercedes me connect services • LED High Performance Headlights • Steering column mechanically adjustable in height and length • Navigation accessories: Extended MBUX functions • Package: Chrome • Upholstery: ARTICO man-made leather • Radio accessories: Remote Online • Tire pressure monitoring system (TPMS) • Wheels: 45.7 cm (18") alloy wheels, 4-spoke design, 5-triple-spoke design • Seats: Rear seat backrests foldable • Seats: Front seats electrically adjustable • Pre-installation for roof rack systems • Immobiliser • Decorative elements: Piano lacquer look in high-gloss black | <ul style="list-style-type: none"> • Airbag for driver and front passenger • Airbag: Side airbag for driver and front passenger • Active Brake Assist • Anti-lock braking system (ABS) • Automatic passenger airbag deactivation • On-board computer • Diesel particulate filter • Third brake light in LED technology • EASY-Pack tailgate with electric operation for opening and closing • Driving light assistant • Electric windows (4-way) • Velour floor mats in interior color • Rear window heated • KEYLESS-GO start function • Instrument cluster with 2 tubular round instruments, 13.97 cm (5.5") multifunction display • Headrests 5-way • Paint finish: Solid • Steering wheel: Multifunction sports steering wheel in 3-spoke design in black leather • Mercedes-Benz emergency call system • Package: Storage • Package: Interior light • Radio accessories: Digital radio • Radio accessories: Touchpad • Remote Services Plus • Rear view camera • Windscreen wipers with rain sensor • Seats: i-Size child restraint system on the outer rear seats • Cruise control • High-visibility vest for drivers • Central locking |
|--|---|

Extra equipment

- | | |
|---|---|
| <ul style="list-style-type: none"> • Paint finish: Metallic • Decorative elements: black piano lacquer finish/light longitudinally brushed aluminum | <ul style="list-style-type: none"> • Navigation accessories: Pre-installation for Live Traffic Information |
|---|---|

Brief expert findings

Documents submitted	At the time of the inspection, the vehicle registration certificate Part 2 (title) was available, but the vehicle registration certificate Part 1 (document) was not. (Copy)
VIN comparison	The vehicle identification number (VIN) was read from the vehicle and its conformity with the submitted documents was confirmed by the undersigned during the inspection.
Inspection	The inspection conditions were sufficient for the assessment of the vehicle. Lifting equipment and/or a pit were available for examining the vehicle.
Test drive	No test drive/shunting maneuver was carried out during the inspection of the vehicle.
Engine function test	An engine test run was performed.



Value reducing factors

No.	Component group	Description
1	Misc.	Inspection / maintenance - No evidence - No deduction
2	Misc.	Main inspection - No evidence - No deduction
3	Documents	Service book - Incomplete - No deduction
4	2nd wheel set	1 tyre (Außen abgefahren) - Does not meet the leasing specifications - Replace

Wear and tear

No.	Component group	Description
1	Wheel / tyres	Tyre - right (Über 4mm) - No deduction
2	Front bumper	Front bumper - Stone chips - No deduction

The vehicle shows signs of wear and tear commensurate with its age and use.

Repainting

No.	Repainting
1	Boot lid / rear door, Professionally carried out, Invoice of repair done Non-existent
2	Side panel - rear right side, Professionally carried out, Invoice of repair done Non-existent

Order/Scope of Order

An order was placed to prepare a sales report for the described vehicle. This report includes the following:

- Description of key vehicle information
- Documentation of equipment features
(*Delivery by third-party service providers*)
- Documentation of damage, defects, missing parts
- Documentation of prior damage, unrepaired prior damage, repainting
- A brief visual or functional inspection of the equipment details, if possible.
(*Functional testing of driver assistance systems is not included in the scope of services!*)
- a photographic documentation of the vehicle

Basis for the order

This product is based on the guidelines for vehicle returns and valuations published by Alphabet Fleet GmbH. The expert makes the specific findings in each individual case objectively, within the framework of the prescribed standards, based on their own expertise.

The vehicle inspection takes place in a fully assembled, unassembled state.

Damage or defects that can only be detected during disassembly/diagnostic work or through further investigation remain within the realm of prognostic risk. An increased risk exists due to concealed defects caused by fraudulent misrepresentation and which were not identifiable by the expert.

Damage or defects resulting from normal use or wear and tear of the vehicle will be accepted in accordance with the applicable standard.

There was no explicit identification or monetary consideration of the expected features within the product.

Features which, in their nature and extent, slightly exceed normal use but do not constitute unacceptable damage, will be documented and indicated as signs of wear, if applicable.

Damage or defects that, according to the applicable standard, can no longer be attributed to normal use or wear and tear are listed under "Value Reducing Factors" in the product description.

Depending on the product specification, a monetary ID can be provided. If this takes place, the costs can be 100% d or pro rata depending on the vehicle's age and mileage.



Previous damages

No apparent prior damage that had been repaired could be found on the vehicle.



Figure 1: Diagonal front (left)



Figure 2: Diagonal front (right)



Figure 3: Diagonal rear (left)



Figure 4: Diagonal rear (right)



Figure 5: Interior - front



Figure 6: Interior - rear



Figure 7: Instrument cluster



Figure 8: Instrument panel



Figure 9: Interior 360° view



Figure 10: Cargo area



Figure 11: VIN



Figure 12: Mounted tyres



Figure 13: Documents



Figure 14: Documents

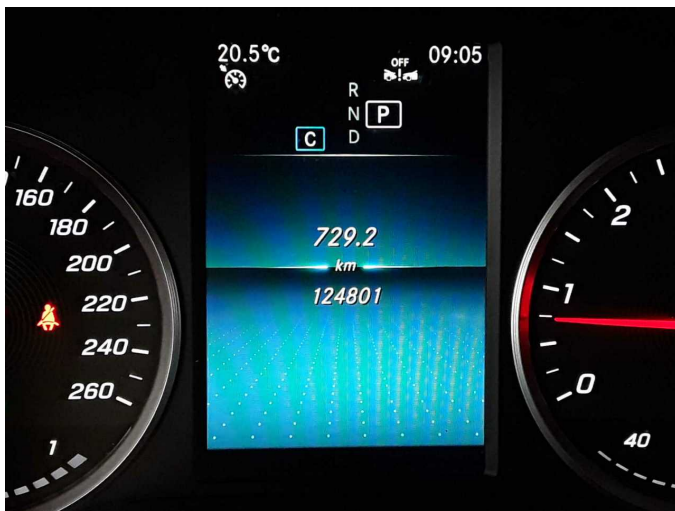


Figure 15: Documents



Figure 16: Additional tyres

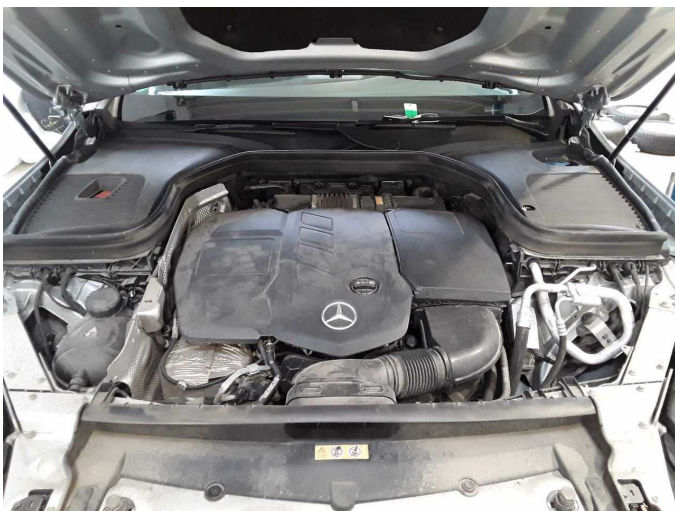


Figure 17: Misc.



Figure 18: Misc.



Figure 19: Misc.



Figure 20: Misc.



Figure 21: Misc.



Figure 22: Misc.

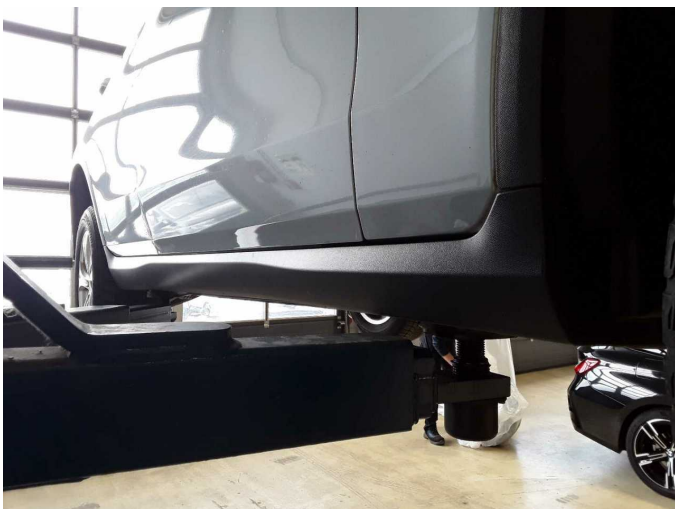


Figure 23: Misc.



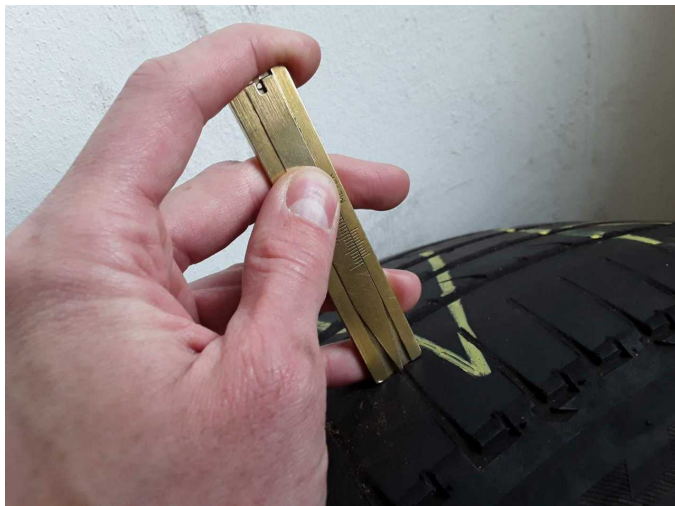
Figure 24: Misc.



Damage 4: 2nd wheel set: 1 tyre (Außen abgefahren) - Does not meet the leasing specifications - Replace



Damage 4: 2nd wheel set: 1 tyre (Außen abgefahren) - Does not meet the leasing specifications - Replace



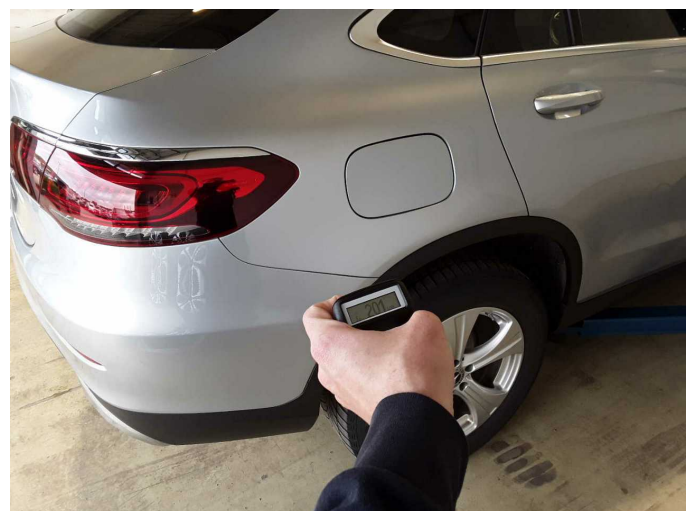
Damage 4: 2nd wheel set: 1 tyre (Außen abgefahren) - Does not meet the leasing specifications - Replace



Repainting 1: Boot lid / rear door



Repainting 1: Boot lid / rear door



Repainting 2: Side panel - rear right side



Repainting 2: Side panel - rear right side