

Expertise

Protocol number: 46132617
Order No. / Reference: 26550427
Inspection date: 24 Jun 2026

Manufacturer: Polestar

Model: 2 Dual Motor 78kWh Performance

VIN: YSMVSETE4PL137119



Vehicle details

Manufacturer / Type / Model / Equipment

Polestar 2 Dual Motor 78kWh Performance

Vehicle Identification number YSMVSETE4PL137119

Mileage (Read) 58,142 km

First registration 13 Mar 2023

Number of holders 1

Next periodical technical inspection 03/2026

(Report not on hand)

Power / Engine displacement 160 kw / 0 ccm

Fuel type / Cylinder Electric / 0

Gearbox / Number of gears Direct drive / 1

Type of drive All-wheel drive

Type of vehicle Saloon car

Colour / colour code Thunder Metallic

Doors / Seats 5 / 5

Upholstery type Cloth

Colour of upholstery Anthracite-Black



Vehicle details

Maintenance booklet / proof	Available / incomplete	Next maintenance in	1,514 km
Key is / should be	2 / 2	FZG documents	ZB#2 (B) was available (copy), ZB#1 (S) was not available.
		Letter No.	GQ203539
Previous damage / Accident	None detectable	Repainting	None detectable
Inspection conditions	sufficient	Lifting equipment / pit	yes
Test drive	Not performed	Engine function test	Performed
Manufacturer key number/ type code number	2219 / AAA 00006		
Emission standard	2017/1151;WLTP;reine Elektrofz	fine dust sticker	
Permitted total weight	2,600 kg	Empty weight	

Tyres

Mounted tyres

#	Tyre size	Type of tyre	Manufacturer	Tread depth
1)	245/40 R20 99W	All-season tyres on Light alloy	Michelin	5mm / 5mm
2)	245/40 R20 99W	All-season tyres on Light alloy	Michelin	5mm / 5mm

Additional tyres

#	Tyre size	Type of tyre	Manufacturer	Tread depth
1)	245/40 R20 99V	Summer tyres on Light alloy	Continental	3mm / 3mm
2)	245/40 R20 99V	Summer tyres on Light alloy	Continental	3mm / 3mm

Replacement

Typ	Tyre size	Type of tyre	Manufacturer	Tread depth
Tirefit		Expiration date 10/2026		

Legend: Tread depth information for the left tire is listed first, for the right tire it is listed second on the axle in the direction of travel.



Equipment

Standard equipment

- 2 USB ports on the back
- Acoustic Vehicle Alert System - AVAS
- Airbags: Head/shoulder airbags
- Alarm system
- Automatic braking after a collision
- Frameless, electrically adjustable exterior mirrors
- Bluetooth
- CleanZone
- Driver Alert Control
- Electric tailgate with soft closing
- Driver display 12.3"
- Forward Collision Warning
- Speed limiter and cruise control
- Large, vertical display with touchscreen
- High-performance audio
- Interior rearview mirror with automatic dimming function
- ISOFIX attachment for front passenger seat and outer rear seats
- Collision avoidance and mitigation
- Charging cable (6 meters)
- LED headlights, adaptive
- Automatic headlight range control
- Navigation system
- Package: Performance
- Polestar Connect
- Upholstery: embossed fabric with 3D etched decor
- Rain sensor
- Tire repair kit
- Rear lights, full-LED
- Keyless opening and starting
- Seat belts
- Seats: Semi-electric seats, front
- Lane Assist (LKA)
- 12V socket in the trunk
- Vehicle Deceleration Control
- Immobiliser

Extra equipment

- Paint finish: Metallic
- Package: Pilot Little (Pilot Assist: keeps the vehicle in the center of the lane by intervening in the steering - Blind Spot Information system with steer assist - Adaptive Cruise Control - Cross Traffic Alert with brake support - Rear Collision Warning & Mitigation - Emergency Stop Assist - 360° camera - Side parking aid - LED front fog lights - Automatically dimming exterior mirrors)
- performance
- ACCESSORIES Partially electric towbar

- 2 USB ports on the front
- Airbags, driver and front passenger
- Airbags: SIPS side airbags
- Armrest with cup holder and storage compartment
- Automatically folding exterior mirrors
- Hill start assist
- third brake light
- Connected Safety
- Front and rear parking assist
- First aid kit
- electric window regulator
- Front storage compartment 41 liters
- Transmission: Direct drive
- Back window, heater
- Infotainment powered by Android
- Integrated eSIM
- Electric child safety lock
- ECC 2-zone air conditioning
- Front and rear headrests
- Charging cable (7 meters) for standard wall sockets
- Steering wheel: Multifunction steering wheel, height and reach adjustable
- One pedal drive
- Electric parking brake
- Polestar Digital Key
- Radio accessories: Digital radio DAB+
- Indirect tire pressure monitoring
- Rear view camera
- whiplash protection system
- Servotronic
- Seats: Split and foldable rear bench seat (40/60)
- Seats: Front seats with seat heating
- Electronic Stability Control (ESC) and traction control
- Textile floor mats
- Traffic Sign Information, RSI
- Hexagonal gear selector with illuminated Polestar symbol

- Long Range Dual Motor with Performance Package
- Package: Plus (Panoramic glass roof with projected Polestar logo, heat pump, WeaveTech seats - Black Ash decor, electrically adjustable front seats with 4-way power lumbar support (memory for driver's seat), leg rest and storage nets in the backrest, heated rear seats, steering wheel and windshield washer nozzles, high-level interior lighting, Harman Kardon premium sound system with 13 speakers, 15W wireless smartphone charging, bag holders, tinted rear window, air quality)



Brief expert findings

Documents submitted	At the time of the inspection, the vehicle registration certificate Part 2 (title) was available, but the vehicle registration certificate Part 1 (document) was not. (Copy)
VIN comparison	The vehicle identification number (VIN) was read from the vehicle and its conformity with the submitted documents was confirmed by the undersigned during the inspection.
Inspection	The inspection conditions were sufficient for the assessment of the vehicle. Lifting equipment and/or a pit were available for examining the vehicle.
Test drive	No test drive/shunting maneuver was carried out during the inspection of the vehicle.
Engine function test	An engine test run was performed.

Value reducing factors

No.	Component group	Description
1	Rear bumper	Rear bumper - Scratch(es) - Smart repair
2	Wheel / tyres	Alloy rim - rear right side - Scratched - Loss in value
3	Door - rear left side	Door - Dent / paintcoat damage - Repair and paint

Wear and tear

No.	Component group	Description
1	Bonnet	Bonnet - Stone chips - No deduction
2	Front bumper	Front bumper - Stone chips - No deduction
3	Vehicle glazing	Windscreen - Stone chips - No deduction

The vehicle shows signs of wear and tear commensurate with its age and use.

Order/Scope of Order

An order was placed to prepare a sales report for the described vehicle. This report includes the following:

- Description of key vehicle information
- Documentation of equipment features
(*Delivery by third-party service providers*)
- Documentation of damage, defects, missing parts
- Documentation of prior damage, unrepaired prior damage, repainting
- A brief visual or functional inspection of the equipment details, if possible.
(*Functional testing of driver assistance systems is not included in the scope of services!*)
- a photographic documentation of the vehicle



Basis for the order

This product is based on the guidelines for vehicle returns and valuations published by Alphabet Fleet GmbH. The expert makes the specific findings in each individual case objectively, within the framework of the prescribed standards, based on their own expertise.

The vehicle inspection takes place in a fully assembled, unassembled state.

Damage or defects that can only be detected during disassembly/diagnostic work or through further investigation remain within the realm of prognostic risk. An increased risk exists due to concealed defects caused by fraudulent misrepresentation and which were not identifiable by the expert.

Damage or defects resulting from normal use or wear and tear of the vehicle will be accepted in accordance with the applicable standard.

There was no explicit identification or monetary consideration of the expected features within the product.

Features which, in their nature and extent, slightly exceed normal use but do not constitute unacceptable damage, will be documented and indicated as signs of wear, if applicable.

Damage or defects that, according to the applicable standard, can no longer be attributed to normal use or wear and tear are listed under "Value Reducing Factors" in the product description.

Depending on the product specification, a monetary ID can be provided. If this takes place, the costs can be 100% d or pro rata depending on the vehicle's age and mileage.

Previous damages

No apparent prior damage that had been repaired could be found on the vehicle.



Figure 1: Diagonal front (left)



Figure 2: Diagonal front (right)



Figure 3: Diagonal rear (left)



Figure 4: Diagonal rear (right)



Figure 5: Interior - front

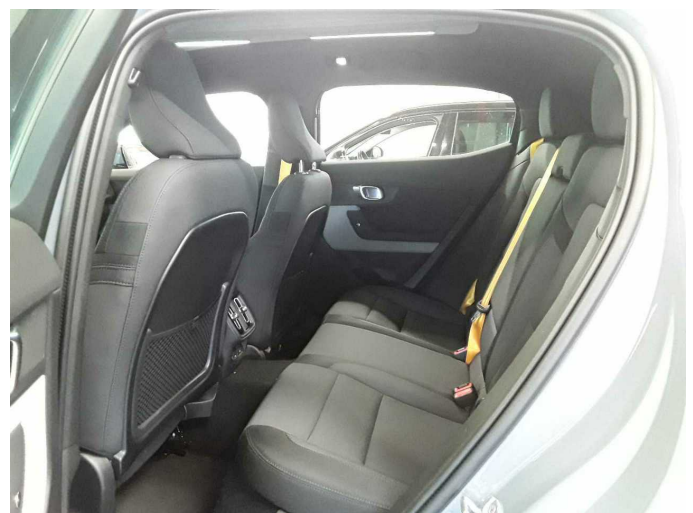


Figure 6: Interior - rear



Figure 7: Instrument cluster



Figure 8: Instrument panel



Figure 9: Interior 360° view



Figure 10: Cargo area

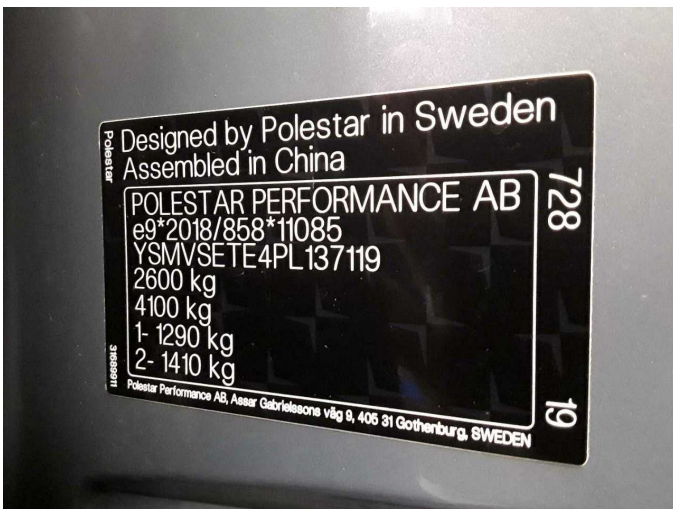


Figure 11: VIN



Figure 12: Mounted tyres



Figure 13: Mounted tyres

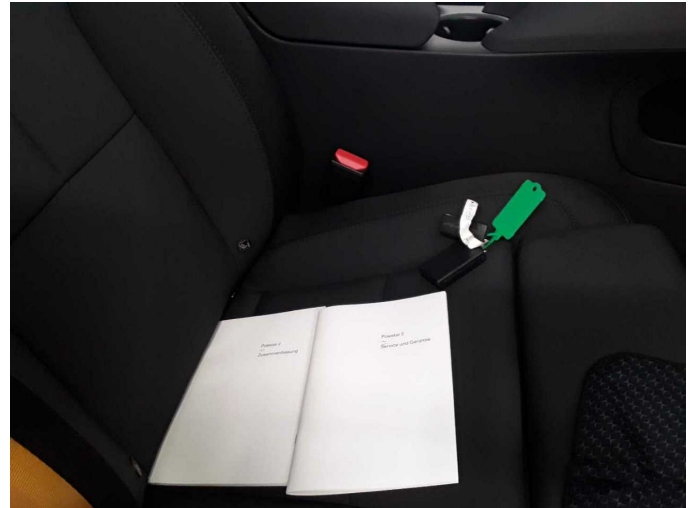


Figure 14: Documents

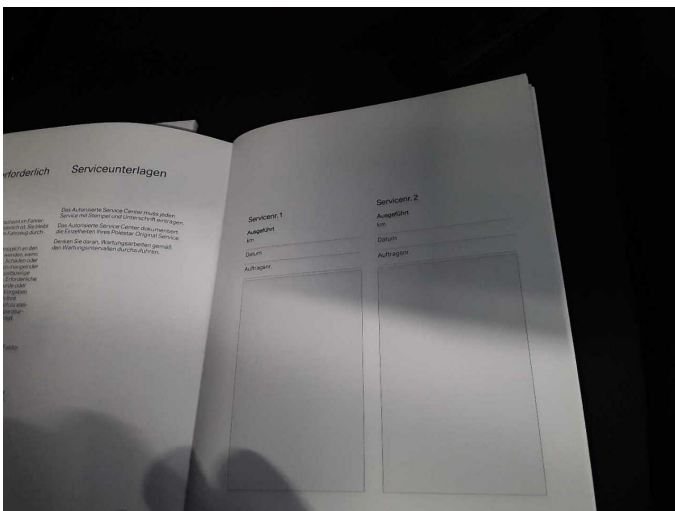


Figure 15: Documents



Figure 16: Additional tyres



Figure 17: Navigation



Figure 18: Misc.



Figure 19: Misc.



Figure 20: Misc.



Figure 21: Misc.



Figure 22: Misc.



Figure 23: Misc.



Figure 24: Misc.



Figure 25: Misc.



Figure 26: Misc.



Figure 27: Misc.



Figure 28: Misc.

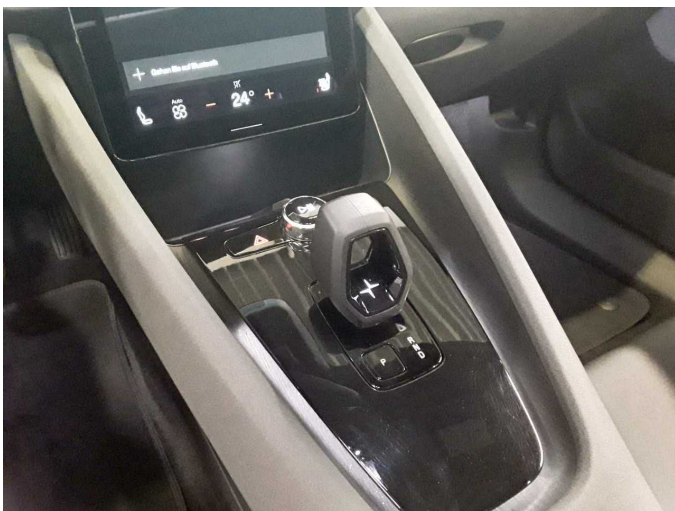


Figure 29: Misc.

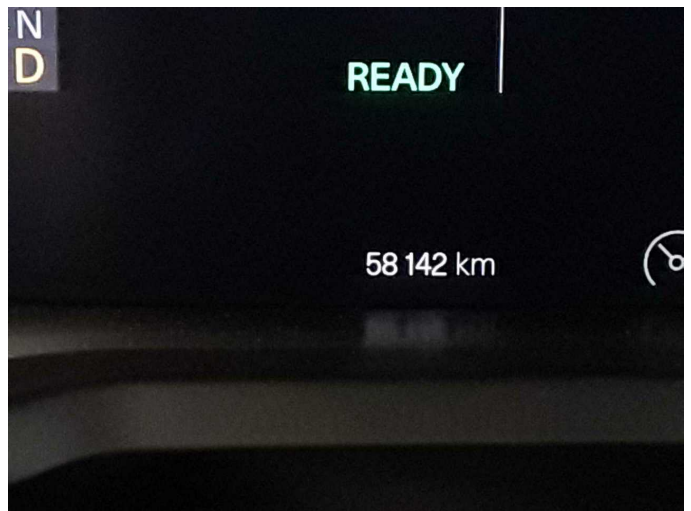


Figure 30: Misc.

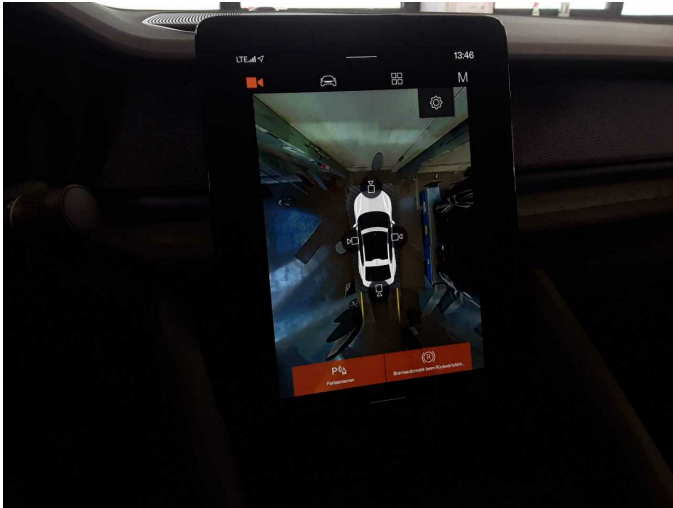


Figure 31: Misc.



Figure 32: Misc.



Figure 33: Misc.

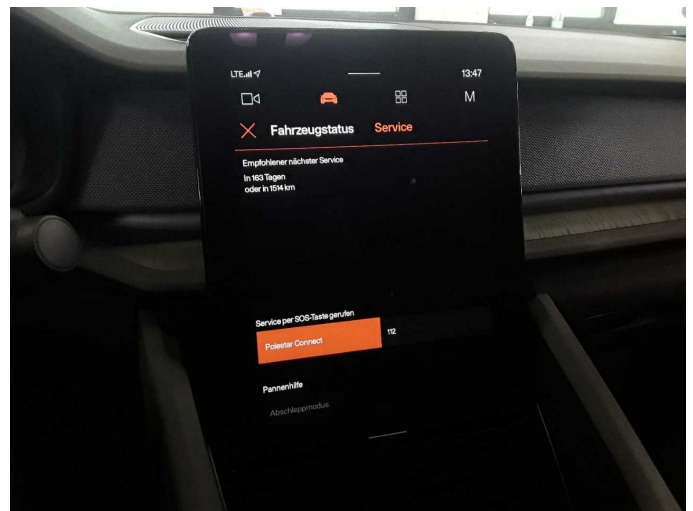


Figure 34: Misc.



Damage 1: Rear bumper: Rear bumper - Scratch(es) - Smart repair



Damage 1: Rear bumper: Rear bumper - Scratch(es) - Smart repair



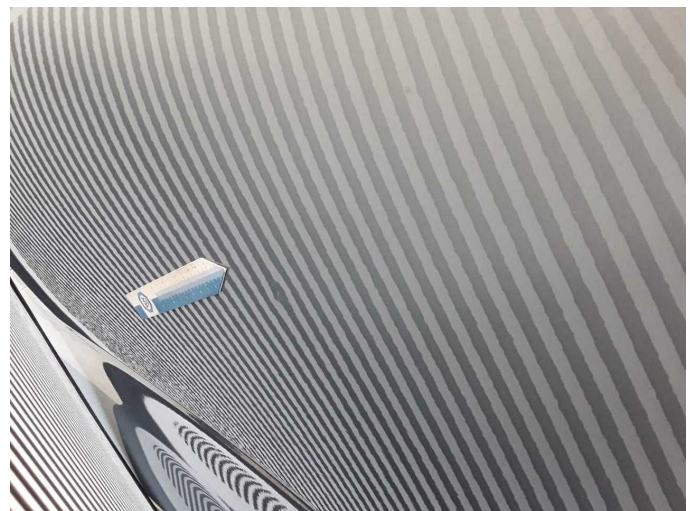
Damage 2: Wheel / tyres: Alloy rim - rear right side - Scratched - Loss in value



Damage 2: Wheel / tyres: Alloy rim - rear right side - Scratched - Loss in value



Damage 3: Door - rear left side: Door - Dent / paintcoat damage - Repair and paint



Damage 3: Door - rear left side: Door - Dent / paintcoat damage - Repair and paint



Wear and tear 1: Bonnet: Bonnet - Stone chips - No deduction



Wear and tear 1: Bonnet: Bonnet - Stone chips - No deduction



Wear and tear 2: Front bumper: Front bumper - Stone chips - No deduction



Wear and tear 2: Front bumper: Front bumper - Stone chips - No deduction