

Expertise

Protocol number: 45933099
Order No. / Reference: 26466347
Inspection date: 10 Jun 2026

Manufacturer: Skoda

Model: Kodiaq 2.0 TDI 4x4 DSG Tour

VIN: TMBLJ7NS4P8043605



Vehicle details

Manufacturer / Type / Model / Equipment

Skoda Kodiaq 2.0 TDI 4x4 DSG Tour

Vehicle Identification number TMBLJ7NS4P8043605

Mileage (Read) 106,676 km

First registration 13 Apr 2023

Number of holders 1

Power / Engine displacement 110 kw / 1,968 ccm

Fuel type / Cylinder Diesel / 4

Gearbox / Number of gears Automatic / 7

Type of drive All-wheel drive

Type of vehicle SUV

Colour / colour code Brilliant-Silber Metallic

Doors / Seats 5 / 5

Upholstery type Cloth

Colour of upholstery Black-Dark grey

Re-import no



Vehicle details

Maintenance booklet / proof	digital proof / complete	Next maintenance in	3,100 km
Last service on / at	08/2025 at 88,640 km		
Key is / should be	2 / 2	FZG documents	ZB#2 (B) was available (copy), ZB#1 (S) was not available.
		Letter No.	GQ565934
Previous damage / Accident	Detectable	Repainting	Detectable
Inspection conditions	sufficient	Lifting equipment / pit	yes
Test drive	Not performed	Engine function test	Performed
Manufacturer key number/ type code number	8004 / ARU 04908		
Emission standard	EURO6;WLTP;AP;PI/CI; M, N1 I	fine dust sticker	
Permitted total weight	2,430 kg	Empty weight	

Tyres

Mounted tyres

#	Tyre size	Type of tyre	Manufacturer	Tread depth
1)	235/50 R19 99V	Summer tyres on Light alloy	Hankook	6mm / 6mm
2)	235/50 R19 99V	Summer tyres on Light alloy	Hankook	4mm / 4mm

Additional tyres

#	Tyre size	Type of tyre	Manufacturer	Tread depth
1)	215/65 R17 103H	Winter tyres on Light alloy	Bridgestone	6mm / 6mm
2)	215/65 R17 103H	Winter tyres on Light alloy	Nexen	7mm / 7mm

Replacement

Typ	Tyre size	Type of tyre	Manufacturer	Tread depth
	Tirefit	Expiration date 02/2027		

Legend: Tread depth information for the left tire is listed first, for the right tire it is listed second on the axle in the direction of travel.



Equipment

Standard equipment

- 12V socket in the center console and in the trunk
- Storage compartments behind the wheel arches in the trunk
- Airbag, driver and passenger
- Airbag, head airbags
- Allergen filter
- Anti-lock braking system (ABS)
- Dashboard in black / black, door trim in black
- Electrically folding exterior mirrors including interior and driver's side mirrors with automatic dimming
- Hill start assist
- Care Connect: Proactive services (10-year term)
- Roof rails, black
- Anti-theft alarm system
- Tachometer
- Easy Start (start-stop button)
- Electric tailgate operation including comfort opening
- Electronic transverse differential lock (XDS+)
- Driving light assistant and rain sensor
- High Beam Assist (Light Assist)
- front and rear floor mats
- Closed storage compartment on the driver's side
- Tinted windows
- Isofix anchorage on the outer rear seats including top tether
- Boot cover, roll-up and removable
- Paint finish: Solid
- LED taillights in crystal glass look & LED license plate lights
- Reading lights at the front of the headliner
- Rear center armrest with cup holders and pass-through option
- Multifunction display in the instrument cluster, color
- Fog lights with integrated LED daytime running lights
- Parking assist
- Upholstery: Cloth
- Radio: Amundsen infotainment system (tour)
- Radio accessories: Digital radio reception DAB+
- Radio accessories: Wireless SmartLink
- Wheels: RunFlat tires with Seal technology
- Heated windshield washer nozzles, front
- Headlights washer / wiper system
- Kodiahq seat belts
- Seats: Adjustable lumbar support in the front seats
- Skoda Care Connect
- Sunshade roller blind for the rear side windows
- Sunset
- Front door sill trims
- Variable fastening concept in the trunk
- Immobiliser
- Storage compartment on the left wheel arch
- Option to opt out of standard extended warranty
- front aero windshield wipers
- Airbag, driver's knee airbag
- Airbag, front side airbags
- Permanent all-wheel drive
- Traction control (ASR)
- Traveller Plus Assistance System (DSG)
- Electrically adjustable and heated exterior mirrors with integrated side indicators
- Hydraulic brake assist (HBA)
- Grey headliner
- Decorative inlay Anodized Cross
- Diesel particulate filter
- Third brake light
- eCall
- Electronic parking brake including auto-hold function
- ESC Electronic Stability Control
- Electric windows front and rear
- Front radar assistant including city emergency braking function with pedestrian detection
- Transmission: 7-speed dual-clutch transmission (DSG)
- Illuminated glove compartment
- Kessy - keyless entry and start-stop system
- Climatronic air conditioning (2-zone)
- Front and rear headrests are height-adjustable.
- LED matrix headlights and dynamic high beam assist (Light Assist)
- Steering wheel: Sport leather steering wheel with multifunction buttons including paddle shifters.
- Front center armrest, including storage compartment
- Engine drag torque control (MSR)
- Multi-collision brake
- Package: Family
- Front and rear parking sensors
- Wheel arch cover
- Radio accessories: 8 speakers
- Radio accessories: SmartLink
- Tire pressure monitoring
- Rear seat backrest split 60:40, foldable, longitudinally adjustable, backrest angle adjustable
- Electromechanical power steering
- Seats: Heated front and outer rear seats
- Seats: Height-adjustable front seats
- Sun visor on driver and passenger side with illuminated vanity mirror
- Telephone: Convenient hands-free telephone system including phone box
- Lashing eyes in the trunk
- Central locking with remote control



Extra equipment

- 17" Premium Alloy Winter Wheels
- Chassis: Adaptive chassis DCC including driving profile selection
- LED ambient lighting
- Electric panoramic sliding sunroof including sunshade
- Rear view camera
- Engine underbody protection
- Windscreen, wirelessly heated
- Roof rails, anodized
- Climatronic air conditioning (3-zone)
- Paint finish: Metallic / Pearl effect
- Package: Business Columbus (Tour)
- Wheels: 19" Trigrav alloy wheels
- Seats: Remote release of the rear seat backrests (2nd row) in the boot

Brief expert findings

Documents submitted	At the time of the inspection, the vehicle registration certificate Part 2 (title) was available, but the vehicle registration certificate Part 1 (document) was not. (Copy)
VIN comparison	The vehicle identification number (VIN) was read from the vehicle and its conformity with the submitted documents was confirmed by the undersigned during the inspection.
Inspection	The inspection conditions were sufficient for the assessment of the vehicle. Lifting equipment and/or a pit were available for examining the vehicle.
Test drive	No test drive/shunting maneuver was carried out during the inspection of the vehicle.
Engine function test	An engine test run was performed.

Value reducing factors

No.	Component group	Description
1	Misc.	Inspection / maintenance - Incomplete - No deduction
2	Misc.	Main inspection - No evidence - No deduction
3	Electronic systems	Parking assistance - on - Perform diagnosis
4	Side panel - rear right side	Side panel - Scratch(es) - Smart repair
5	Rear bumper	Rear bumper - Scratch(es) - Smart repair
6	2nd wheel set	1 alloy rim - Scratch(es) - Smart repair
7	Airbag systems	Airbag system (Folgekosten möglich) - on - Perform diagnosis
8	Electrical system	Battery - Empty - Replace
9	Door - rear left side	Door - Dent / paintcoat damage - Repair and paint

Wear and tear

No.	Component group	Description
1	Bonnet	Bonnet - Stone chips - No deduction
2	Bonnet	Bonnet - dent(s) - No deduction
3	Boot lid / rear door	Boot lid - Scratch(es) - No deduction
4	Trim / covers	Boot lining - Scratched - No deduction
5	Trim / covers	Boot lid - interior trim - Scratched - No deduction
6	Side panel - rear left side	Side panel - dent(s) - No deduction

The vehicle shows signs of wear and tear commensurate with its age and use.

Missing parts

Description

Equipment - Umbrella
 Interior - Boot cover / roller cover



Previous damages

No.	Previous damage	Extent of damage (Net)
1	Front, Provided by user / customer, from 16 Feb 2025	5.620,44 €
2	Front, Side right, Provided by user / customer, from 27 Mar 2024	10.725,23 €
3	Side right, Provided by user / customer	

Repainting

No.	Repainting
1	Mudguard - right side, Bonnet, Door - rear right side, Door - front right side, Professionally carried out, Invoice of repair done Non-existent

Paint coat thickness measurement

Mudguard - right side	157 µm	Bonnet	299 µm
Door - rear right side	193 µm	Door - front right side	206 µm

Order/Scope of Order

An order was placed to prepare a sales report for the described vehicle. This report includes the following:

- Description of key vehicle information
- Documentation of equipment features
(*Delivery by third-party service providers*)
- Documentation of damage, defects, missing parts
- Documentation of prior damage, unrepaired prior damage, repainting
- A brief visual or functional inspection of the equipment details, if possible.
(*Functional testing of driver assistance systems is not included in the scope of services!*)
- a photographic documentation of the vehicle

Basis for the order

This product is based on the guidelines for vehicle returns and valuations published by Alphabet Fleet GmbH. The expert makes the specific findings in each individual case objectively, within the framework of the prescribed standards, based on their own expertise.

The vehicle inspection takes place in a fully assembled, unassembled state.

Damage or defects that can only be detected during disassembly/diagnostic work or through further investigation remain within the realm of prognostic risk. An increased risk exists due to concealed defects caused by fraudulent misrepresentation and which were not identifiable by the expert.

Damage or defects resulting from normal use or wear and tear of the vehicle will be accepted in accordance with the applicable standard.

There was no explicit identification or monetary consideration of the expected features within the product.

Features which, in their nature and extent, slightly exceed normal use but do not constitute unacceptable damage, will be documented and indicated as signs of wear, if applicable.

Damage or defects that, according to the applicable standard, can no longer be attributed to normal use or wear and tear are listed under "Value Reducing Factors" in the product description.

Depending on the product specification, a monetary ID can be provided. If this takes place, the costs can be 100% d or pro rata depending on the vehicle's age and mileage.

Previous damages

According to available information previous damages were repaired at the vehicle. Traces of repairs, which allow conclusions about the area of repair, were not recognizable during the inspection.



Figure 1: Diagonal front (left)



Figure 2: Diagonal front (right)



Figure 3: Diagonal rear (left)



Figure 4: Diagonal rear (right)



Figure 5: Interior - front



Figure 6: Interior - rear



Figure 7: Instrument cluster



Figure 8: Instrument panel



Figure 9: Interior 360° view



Figure 10: Cargo area

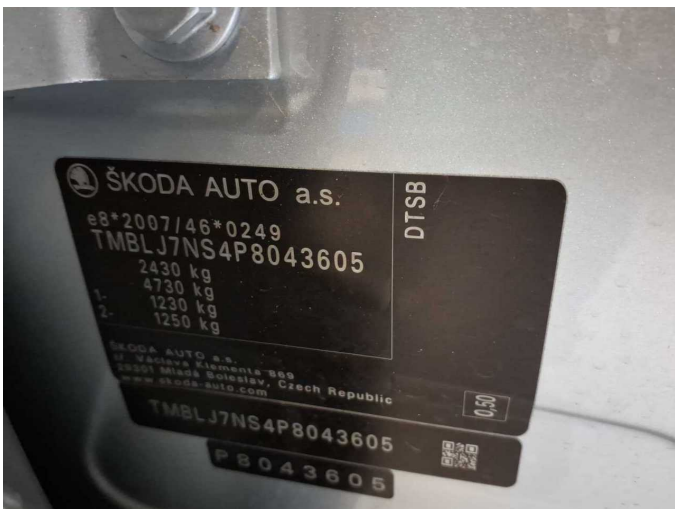


Figure 11: VIN



Figure 12: Mounted tyres



Figure 13: Documents



Figure 14: Additional tyres

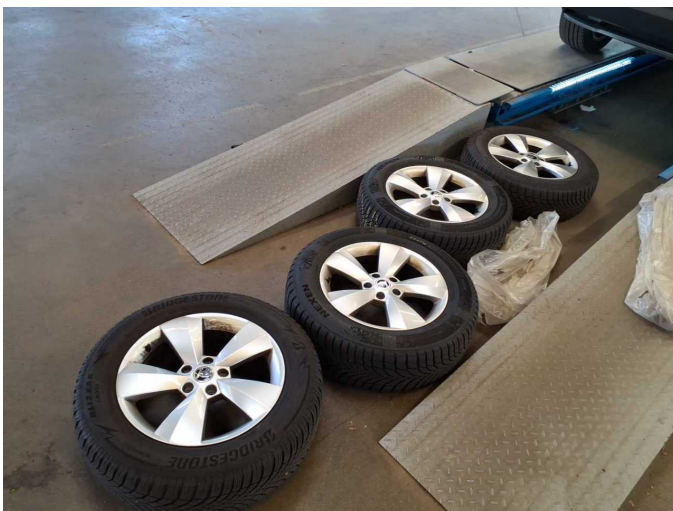


Figure 15: Additional tyres



Figure 16: Navigation



Figure 17: Misc.



Figure 18: Misc.



Figure 19: Misc.



Figure 20: Misc.

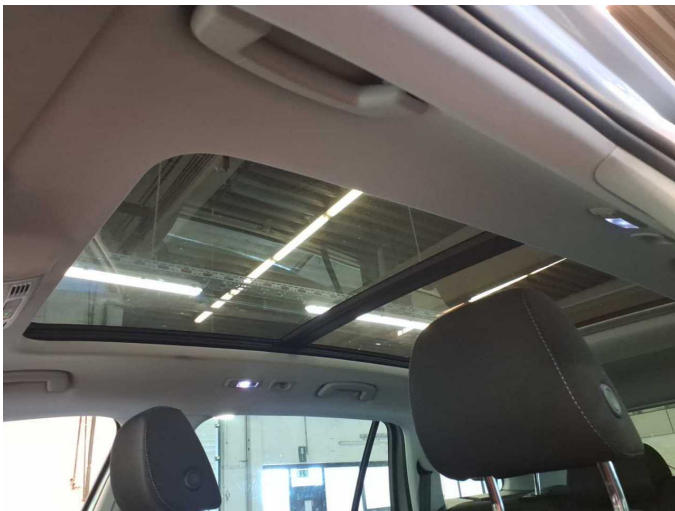


Figure 21: Misc.



Figure 22: Misc.

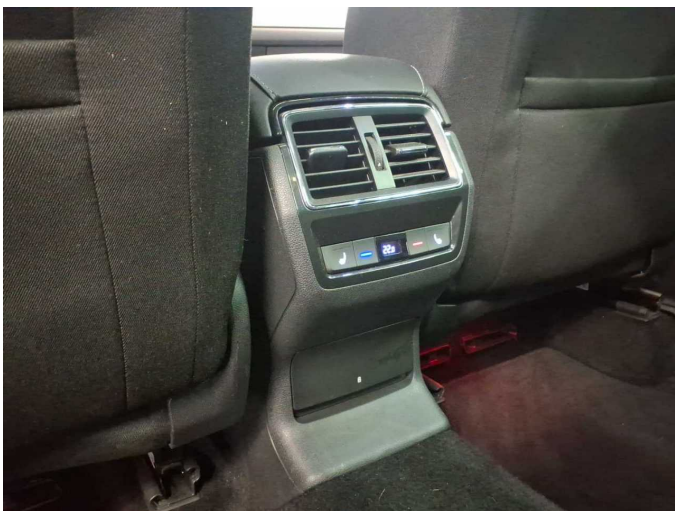


Figure 23: Misc.

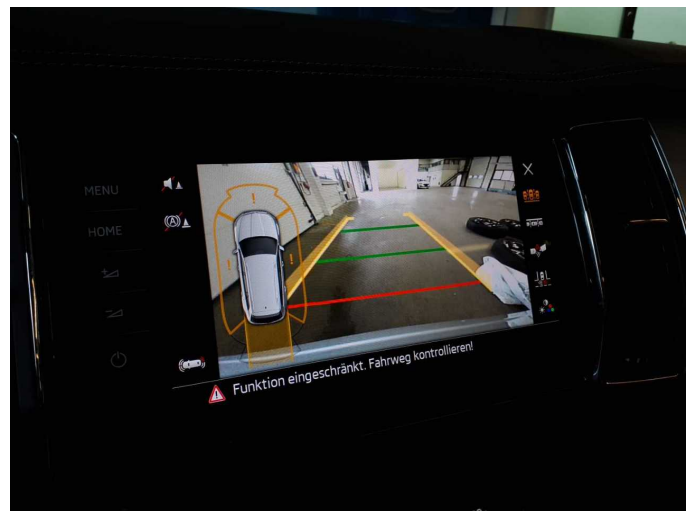


Figure 24: Misc.



Figure 25: Misc.



Figure 26: Misc.



Damage 3: Electronic systems: Parking assistance - on - Perform diagnosis



Damage 4: Side panel - rear right side: Side panel - Scratch(es) - Smart repair



Damage 4: Side panel - rear right side: Side panel - Scratch(es) - Smart repair



Damage 5: Rear bumper: Rear bumper - Scratch(es) - Smart repair



Damage 5: Rear bumper: Rear bumper - Scratch(es) - Smart repair



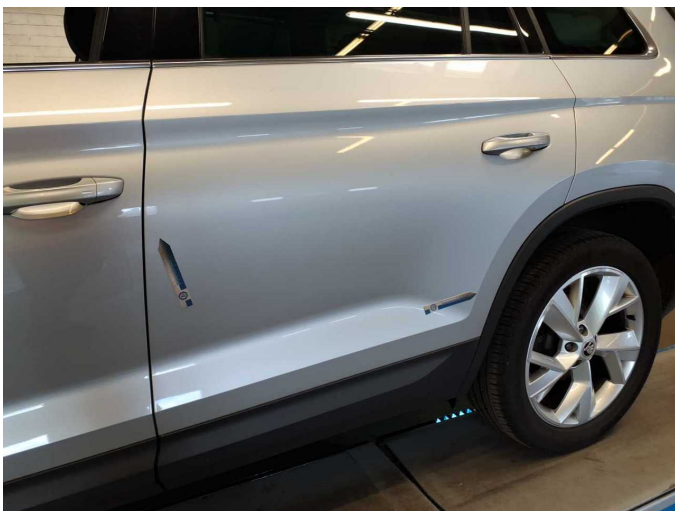
Damage 6: 2nd wheel set: 1 alloy rim - Scratch(es) - Smart repair



Damage 6: 2nd wheel set: 1 alloy rim - Scratch(es) - Smart repair



Damage 7: Airbag systems: Airbag system (Folgekosten möglich) - on - Perform diagnosis



Damage 9: Door - rear left side: Door - Dent / paintcoat damage - Repair and paint



Damage 9: Door - rear left side: Door - Dent / paintcoat damage - Repair and paint



Damage 9: Door - rear left side: Door - Dent / paintcoat damage - Repair and paint



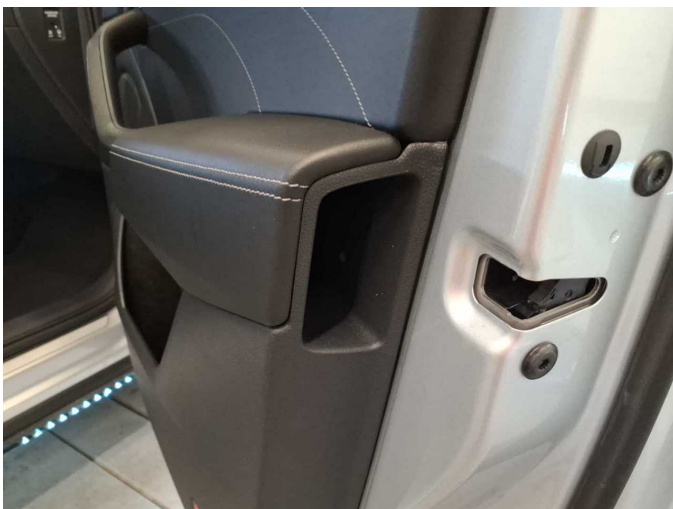
Damage 9: Door - rear left side: Door - Dent / paintcoat damage - Repair and paint



Damage 9: Door - rear left side: Door - Dent / paintcoat damage - Repair and paint



Missing part 1: Equipment: Umbrella - Missing - Replace



Missing part 1: Equipment: Umbrella - Missing - Replace



Repainting 1: Mudguard - right side, Bonnet, Door - rear right side, Door - front right side



Repainting 1: Mudguard - right side, Bonnet, Door - rear right side, Door - front right side



Repainting 1: Mudguard - right side, Bonnet, Door - rear right side, Door - front right side



Repainting 1: Mudguard - right side, Bonnet, Door - rear right side, Door - front right side



Wartungshistorie

(gemäß Auftraggeber Informationen)

Fahrgestellnummer: TMBLJ7NS4P8043605
Hersteller / Modell: SKODA SKODA Kodiaq 2.0 TDI 4x4 DSG Tour

Datum	KM-Stand	Beschreibung
25.08.2025	88.640	Bremse Sonstiges; Bremsklötze vorne; Bremsscheiben vorne; Kraftstofffilter ern; Luftfiltereinsatz ern; Regelwartungsdienst
25.06.2025	79.747	Bremse Sonstiges; Bremsflüssigkeit; Bremsflüssigkeit ern; Bremsklötze hinten; Bremsscheiben hinten; Getriebeöl ern/prüfen; Motoröl b. Wartung; Ölfilter ern; Ölwechsel; Ölwechsel - Hinterachse; Reparatur Sonstiges; Wartung Sonstiges
18.12.2024	57.582	Motoröl b. Wartung; Ölfilter ern; Regelwartungsdienst; Wartung Sonstiges
05.12.2024	57.582	Reparatur Sonstiges; Systemtest/Eigendiagnose; Turbolader ern