

## Expertise

Protocol number: 46115668  
Order No. / Reference: 26496516  
Inspection date: 23 Jun 2026

Manufacturer: Volkswagen

Model: Tiguan Allspace 2.0 TDI SCR DSG Life

VIN: WVGZZZ5NZNM093045



### Vehicle details

#### Manufacturer / Type / Model / Equipment

Volkswagen Tiguan Allspace 2.0 TDI SCR DSG Life

<b>Vehicle Identification number</b>	WVGZZZ5NZNM093045
<b>Mileage (Read)</b>	175,290 km
<b>First registration</b>	27 Jun 2022
<b>Number of holders</b>	1
<b>Next periodical technical inspection</b>	06/2027 (Report not on hand)

<b>Power / Engine displacement</b>	110 kw / 1,968 ccm
------------------------------------	--------------------

<b>Fuel type / Cylinder</b>	Diesel / 4
-----------------------------	------------

<b>Gearbox / Number of gears</b>	Automatic / 7
----------------------------------	---------------

<b>Type of drive</b>	Front drive
----------------------	-------------

<b>Type of vehicle</b>	SUV
------------------------	-----

<b>Colour / colour code</b>	Deep Black Perleffekt (C9X)
-----------------------------	--------------------------------

<b>Doors / Seats</b>	5 / 5
----------------------	-------

<b>Upholstery type</b>	Alcantara / cloth
------------------------	-------------------

<b>Colour of upholstery</b>	Black-Anthracite
-----------------------------	------------------

<b>Re-import</b>	no
------------------	----

<b>readiness to drive</b>	Roadworthy
---------------------------	------------



## Vehicle details

<b>Maintenance booklet / proof</b>	digital proof / complete	<b>Next maintenance in</b>	200 km
<b>Last service on / at</b>	09/2025 at 147,403 km		
<b>Key is / should be</b>	2 / 2	<b>FZG documents</b>	ZB#2 (B) was available (copy), ZB#1 (S) was not available.
		<b>Letter No.</b>	GJ163403
<b>Previous damage / Accident</b>	None detectable	<b>Repainting</b>	None detectable
<b>Inspection conditions</b>	sufficient	<b>Lifting equipment / pit</b>	yes
<b>Test drive</b>	Not performed	<b>Engine function test</b>	Performed
<b>readiness to drive</b>	Roadworthy		
<b>Manufacturer key number/ type code number</b>	0603 / BZG 21342		
<b>Emission standard</b>	EURO6;WLTP;AP;PI/CI; M, N1 I	<b>fine dust sticker</b>	
<b>Permitted total weight</b>	2,270 kg	<b>Empty weight</b>	

## Tyres

### Mounted tyres

#	Tyre size	Type of tyre	Manufacturer	Tread depth
1)	235/55 R18 104V	Summer tyres on Light alloy	Continental	4mm / 4mm
2)	235/55 R18 104V	Summer tyres on Light alloy	Continental	5mm / 5mm

### Additional tyres

#	Tyre size	Type of tyre	Manufacturer	Tread depth
1)	215/65 R17 103V	Winter tyres on Light alloy	Bridgestone	5mm / 5mm
2)	215/65 R17 103V	Winter tyres on Light alloy	Bridgestone	6mm / 6mm

**Legend: Tread depth information for the left tire is listed first, for the right tire it is listed second on the axle in the direction of travel.**

TÜV SÜD Auto Partner GmbH  
Wiesenring 2  
04159 Leipzig

Inspection location  
Hartmann Fleet Professionals GmbH  
Industriestraße 11  
36272 Niederaula



## Equipment



## Standard equipment

- Storage compartments in the overhead console
- Airbag, head airbag system including front side airbags (for front and rear passengers)
- Adaptive Cruise Control (ACC) "stop & go" with speed limiter
- third brake light
- Chrome trim on the side windows
- Silver anodized roof rails
- Decorative inserts "Horizont Black" (for instrument panel and front door panels)
- Parking aid (acoustic warning signals for obstacles in the front and rear area)
- Electronic stability program with counter-steering support (including ABS, ASR, EDS, MSR and trailer stabilization)
- Automatic headlight control, with daytime running lights ("Leaving home" function and manual "Coming home" function)
- Driving profile selection (possibility to set different vehicle settings: Comfort, Normal, Sport, Eco, Individual - adaptable vehicle systems include: engine, adaptive chassis control DCC, DSG, steering, start-stop system, cornering lights and "Dynamic Light Assist", automatic distance control ACC, air conditioning)
- Pedestrian detection
- Luggage compartment lighting (additional, removable and usable as a flashlight)
- Tailgate with electric opening and closing, adjustable opening angle
- Interior mirror automatically dimming
- LED license plate lighting
- Air conditioning "Air Care Climatronic" (3-zone temperature control - allergen filter - rear controls)
- LED headlights
- Steering wheel: Multifunction steering wheel in leather, with paddle shifters
- Illuminated makeup mirrors in the sun visors
- Fatigue detection
- Emergency braking assistant "Front Assist" (detects critical distance situations and helps to shorten the stopping distance - warns the driver visually and audibly in dangerous situations as well as with a preventive brake jolt)
- Radio
- Radio accessories: 8 speakers
- Rain sensor
- Wheels: AirStop tires 235/55 R 18, optimized for low rolling resistance
- Gearshift knob in leather
- Drawers under the front seats
- Seat belts: Three-point automatic seat belts at the front with height adjustment and belt tensioner (3 three-point automatic seat belts at the rear including belt tensioner for the outer rear seats - warning tone and light for unfastened seat belts at the front and rear)
- Lane keeping assistant "Lane Assist"
- Airbag for driver and front passenger including knee airbag on the driver's side (passenger airbag deactivation - knee airbag on driver's side)
- Exterior mirror housings painted silver
- Hill descent control
- Chrome applications on mirror adjustment switches, window regulator switches, door pull handles (interior door operation in matte chrome)
- Diesel particulate filter
- Display: Digital Cockpit Pro, multicolor, various selectable info profiles
- Electronic parking brake including Auto Hold function (Volkswagen's Auto Hold function is an extension of the electronic parking brake. The Auto Hold function prevents the vehicle from rolling away unintentionally when stationary or starting off, without the driver having to constantly apply the brakes. In this way, Auto Hold offers maximum driving comfort. - If the ABS wheel speed sensors detect rolling, the braking torque is automatically increased until the vehicle comes to a complete stop.)
- Electric windows front and rear
- High beam control Light Assist
- Windscreen made of laminated safety glass, heat and sound insulating
- Luggage compartment floor height adjustable in 2 stages
- Transmission: 7-speed DSG
- Rear window heated
- Rear window wiper with intermittent function
- ISOFIX mounting points, also for i-Size child seats (device for attaching 2 child seats to the rear seats)
- Rear headrests (3)
- Front headrests (safety-optimized - adjustable lengthwise and height)
- Reading lights: 2 front and 2 rear
- Light in the front footwell
- front center armrest
- Non-smoking version (storage compartment and 12V socket at the front)
- Emergency call service (no registration required, service is activated upon delivery)
- Upholstery: Cloth
- Proactive occupant protection system in conjunction with "Front Assist"
- Radio accessories: Digital radio reception DAB+
- Tire pressure monitoring system
- Wheels: Tire Mobility Set omitted
- Wheels: Light alloy (4) "Frankfurt" 7 J x 18 (tires 235/55 R 18)
- Electromechanical power steering (speed-dependent control)
- Seats: Front passenger seat backrest folds down completely
- Seats: Lumbar support in the front
- Seats: Front seats with height adjustment
- Start-stop system with brake energy recuperation



- 12-volt power outlet (on the rear center console and in the luggage compartment)
- Telephone interface
- First aid kit, warning triangle and high-visibility vest
- Prepared for later activation: Navigation function "Discover Media" incl. "Streaming & Internet"
- Central locking without safe locking, with remote control and 2 remote keys

### Extra equipment

- 230 volt socket
- Electrically adjustable, folding and heated exterior mirrors (with passenger-side mirror lowering function)
- Mesh partition
- Navigation system "Discover Pro" incl. "Streaming & Internet" (8 speakers - App-Connect incl. App-Connect Wireless for Apple CarPlay and Android Auto - Digital radio reception DAB+ - Navigation system "Discover Pro" incl. "Streaming & Internet" - Radio - Voice control - Traffic sign recognition)
- Package: Business Premium (DSG) (2 USB-C ports in the front, 1 USB-C charging port on the rear center console - Head-up display - Leather multifunction steering wheel, heated, with shift paddles - Automatically heated windshield washer nozzles in the front - Voice control - "Comfort" telephone interface with inductive charging function - Heated front seats)
- Paint finish: Pearl effect
- Park Assist system including parking aid
- Surround view "Area View" (incl. reversing camera "Rear View")
- Windows: Rear side windows and rear window tinted

- Power outlet: 2 USB-C ports on the front
- Bumpers in body color (lower bumper parts black)
- Textile floor mats front and rear
- Prepared for "We Connect" and "We Connect Plus"
- Electronic immobilizer
- Green thermal insulation glazing, sides and rear

- Anti-theft alarm system with safe locking (anti-theft alarm system with interior monitoring, backup horn and tow-away protection, central locking with safe locking, remote control and 2 remote folding keys)
- Package: "Easy Open & Close" with safe locking mechanism ("Easy Open & Close" - tailgate with sensor-controlled opening and closing, with remote unlocking - keyless locking and starting system "Keyless Access" with safe locking mechanism)
- Package: Driver assistance package "Plus" (Driving assistant "Travel Assist", lane keeping assistant "Lane Assist" and "Emergency Assist" - parking steering assistant "Park Assist" incl. parking aid - proactive occupant protection system in conjunction with "Front Assist" - lane change assistant "Side Assist" and parking assistant - traffic sign recognition)
- Seats: ergoActive front seats (front passenger seat backrest not foldable - ergoActive front seats height-adjustable, seat and backrest tilt adjustable, thigh support longitudinally adjustable - front lumbar support electrically adjustable and with massage function - seat center panels of the front seats and the outer rear seats in microfleece "ArtVelours" - top comfort seats in front)

### Brief expert findings

Documents submitted	At the time of the inspection, the vehicle registration certificate Part 2 (title) was available, but the vehicle registration certificate Part 1 (document) was not. (Copy)
VIN comparison	The vehicle identification number (VIN) was read from the vehicle and its conformity with the submitted documents was confirmed by the undersigned during the inspection.
Inspection	The inspection conditions were sufficient for the assessment of the vehicle. Lifting equipment and/or a pit were available for examining the vehicle.
Test drive	No test drive/shunting maneuver was carried out during the inspection of the vehicle.
Engine function test	An engine test run was performed.
readiness to drive	The vehicle was roadworthy at the time of inspection.



## Value reducing factors

No.	Component group	Description
1	Equipment	Vehicle key (Batterie) - Empty - Replace
2	Side panel - rear left side	Side panel - dent(s) - Smooth repair work
3	Door - rear right side	Door (Innen) - dent(s) - Smooth repair work
4	Side panel - rear left side	Sill - dent(s) - Smooth repair work
5	Rear bumper	Rear bumper - Scratch(es) - Smart repair
6	Boot lid / rear door	Boot lid - dent(s) - Smooth repair work
7	Door - front right side	Door - Dent / paintcoat damage - Smart repair
8	Mudguard - right side	Wheel well extension (Materialabtrag) - Scratched - Replace
9	Bonnet	Bonnet - Dent / paintcoat damage - Repair and paint

## Wear and tear

No.	Component group	Description
1	Misc.	Main inspection - No evidence - No deduction
2	Front bumper	Front bumper - Stone chips - No deduction
3	Door - rear left side	Door - Scratch(es) - No deduction
4	Door - front left side	Door edge - Scratch(es) - Smart repair

The vehicle shows signs of wear and tear commensurate with its age and use.

## Order/Scope of Order

An order was placed to prepare a sales report for the described vehicle. This report includes the following:

- Description of key vehicle information
- Documentation of equipment features  
(*Delivery by third-party service providers*)
- Documentation of damage, defects, missing parts
- Documentation of prior damage, unrepaired prior damage, repainting
- A brief visual or functional inspection of the equipment details, if possible.  
(*Functional testing of driver assistance systems is not included in the scope of services!*)
- a photographic documentation of the vehicle

## Basis for the order

This product is based on the guidelines for vehicle returns and valuations published by Alphabet Fleet GmbH. The expert makes the specific findings in each individual case objectively, within the framework of the prescribed standards, based on their own expertise.

The vehicle inspection takes place in a fully assembled, unassembled state.

Damage or defects that can only be detected during disassembly/diagnostic work or through further investigation remain within the realm of prognostic risk. An increased risk exists due to concealed defects caused by fraudulent misrepresentation and which were not identifiable by the expert.

Damage or defects resulting from normal use or wear and tear of the vehicle will be accepted in accordance with the applicable standard.

There was no explicit identification or monetary consideration of the expected features within the product.

Features which, in their nature and extent, slightly exceed normal use but do not constitute unacceptable damage, will be documented and indicated as signs of wear, if applicable.

Damage or defects that, according to the applicable standard, can no longer be attributed to normal use or wear and tear are listed under "Value Reducing Factors" in the product description.

Depending on the product specification, a monetary ID can be provided. If this takes place, the costs can be 100% d or pro rata depending on the vehicle's age and mileage.



## Previous damages

No apparent prior damage that had been repaired could be found on the vehicle.

## Comments

- Winterradsatz ist kein Bestandteil des Auslieferungsumfangs.



Figure 1: Diagonal front (left)



Figure 2: Diagonal front (right)



Figure 3: Diagonal rear (left)



Figure 4: Diagonal rear (right)



Figure 5: Interior - front



Figure 6: Interior - rear



Figure 7: Instrument cluster



Figure 8: Instrument panel



Figure 9: Interior 360° view

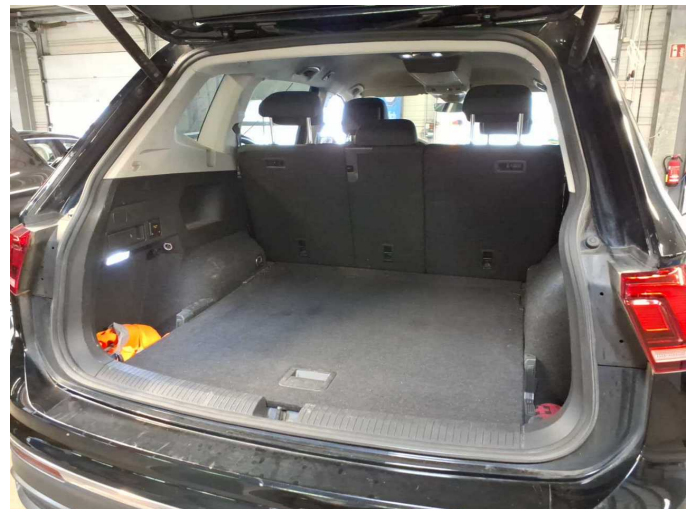


Figure 10: Cargo area

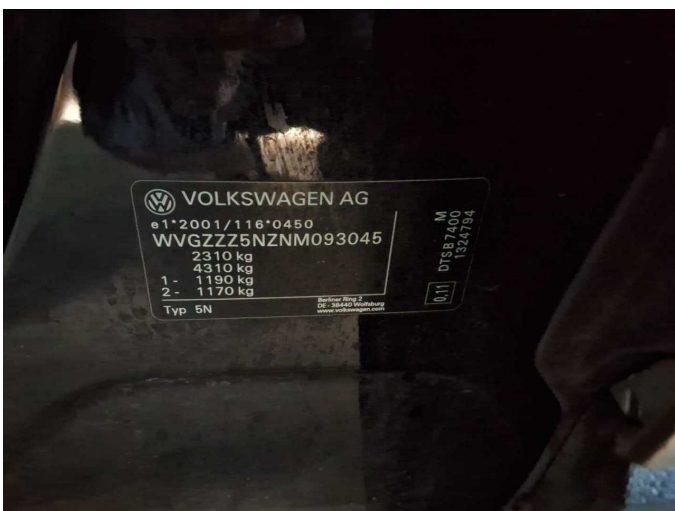


Figure 11: VIN



Figure 12: Mounted tyres

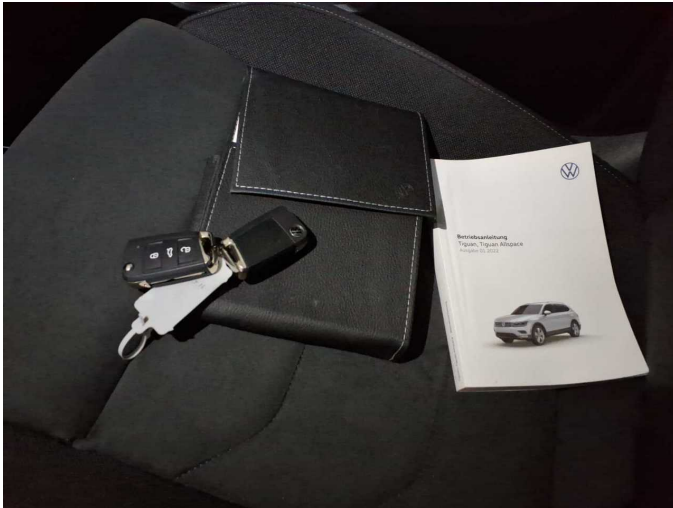


Figure 13: Documents



Figure 14: Additional tyres



Figure 15: Navigation



Figure 16: Misc.

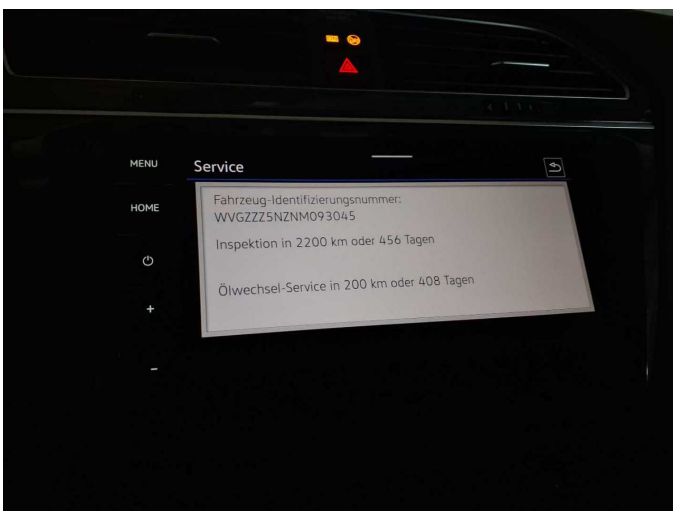


Figure 17: Misc.



Figure 18: Misc.



Figure 19: Misc.



Figure 20: Misc.



Figure 21: Misc.

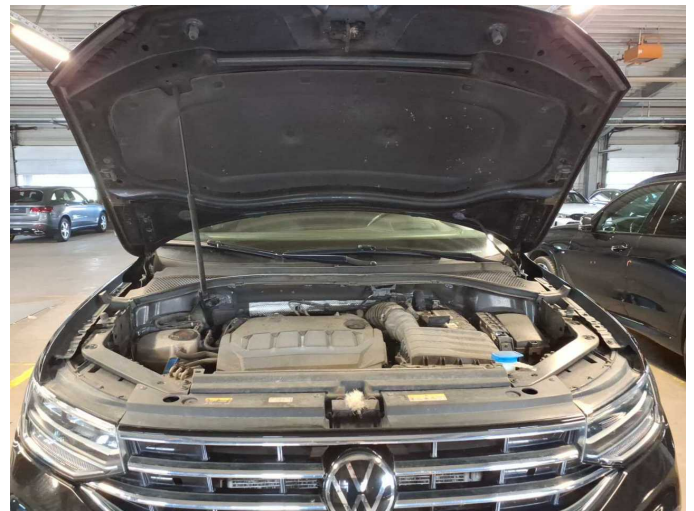


Figure 22: Misc.

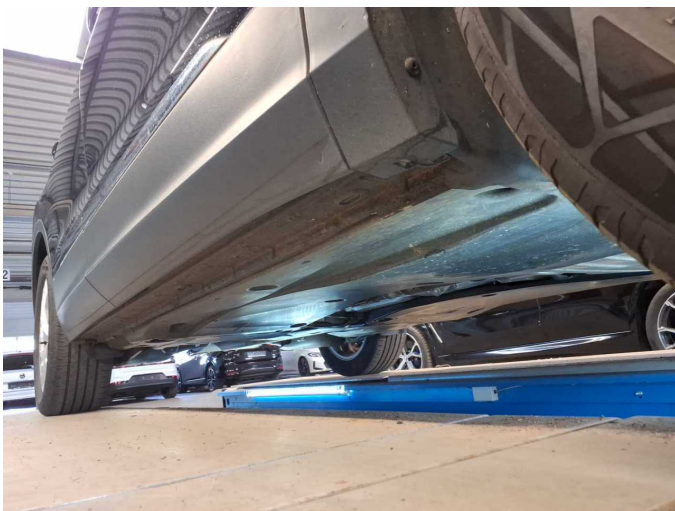


Figure 23: Misc.

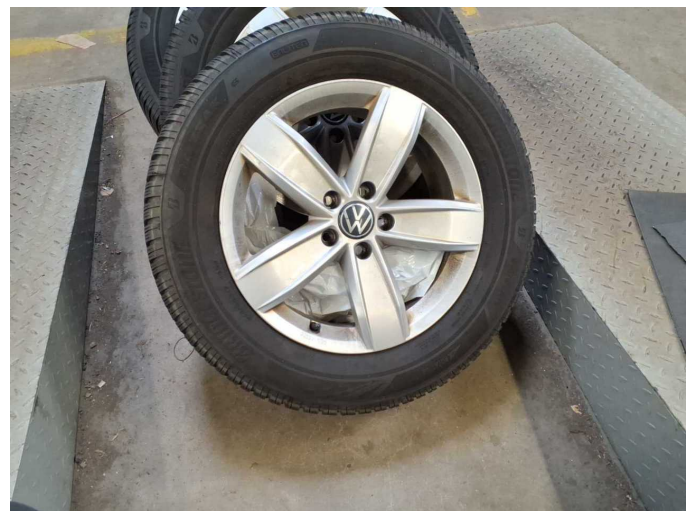


Figure 24: Misc.



Figure 25: Misc.



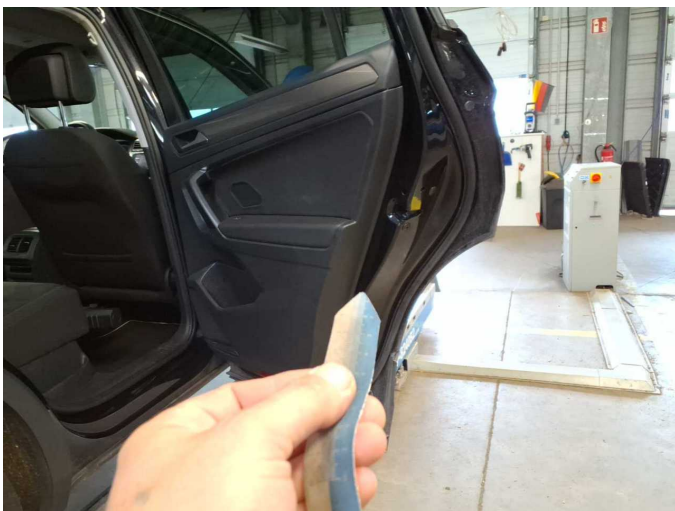
Figure 26: Misc.



Damage 2: Side panel - rear left side: Side panel - dent(s) - Smooth repair work



Damage 2: Side panel - rear left side: Side panel - dent(s) - Smooth repair work



Damage 3: Door - rear right side: Door (Innen) - dent(s) - Smooth repair work



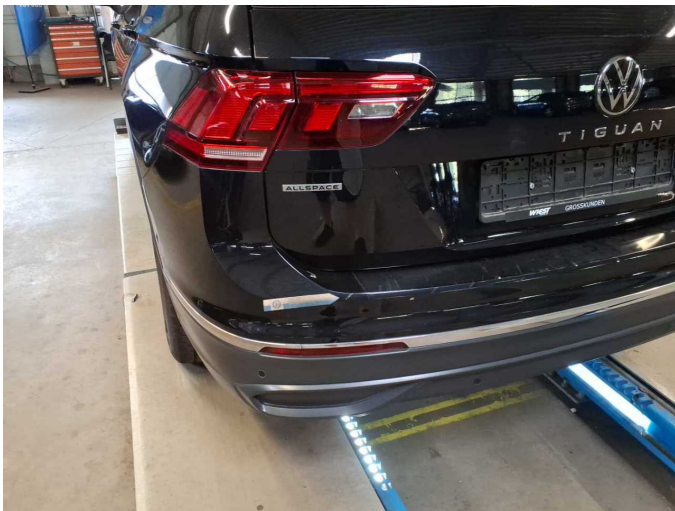
Damage 3: Door - rear right side: Door (Innen) - dent(s) - Smooth repair work



**Damage 4:** Side panel - rear left side: Sill - dent(s) - Smooth repair work



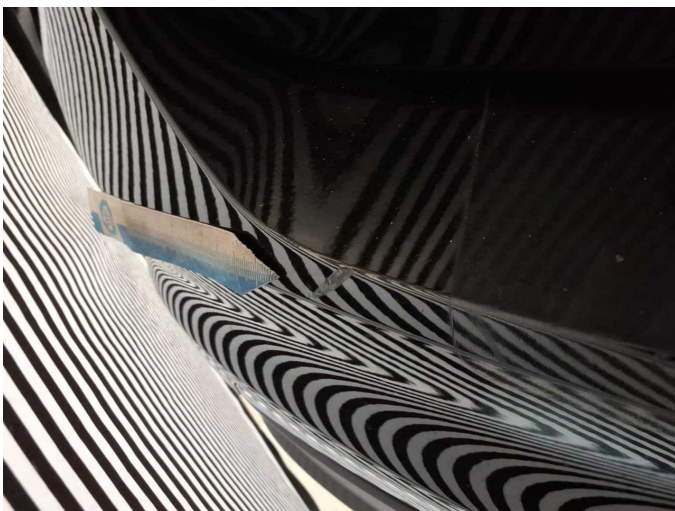
**Damage 4:** Side panel - rear left side: Sill - dent(s) - Smooth repair work



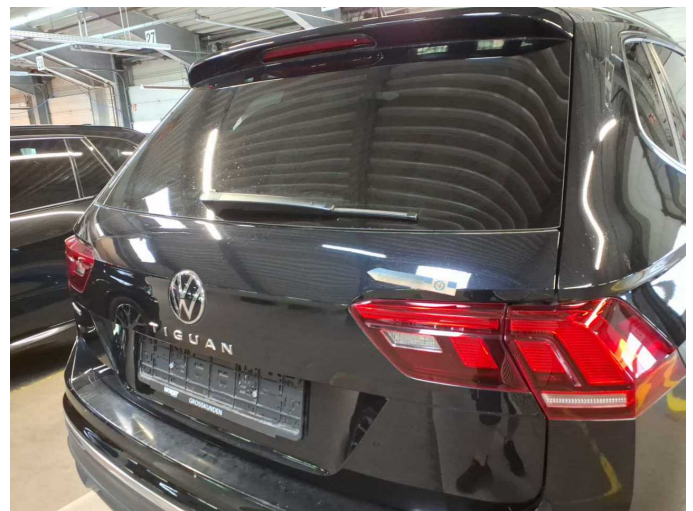
**Damage 5:** Rear bumper: Rear bumper - Scratch(es) - Smart repair



**Damage 5:** Rear bumper: Rear bumper - Scratch(es) - Smart repair



**Damage 5:** Rear bumper: Rear bumper - Scratch(es) - Smart repair



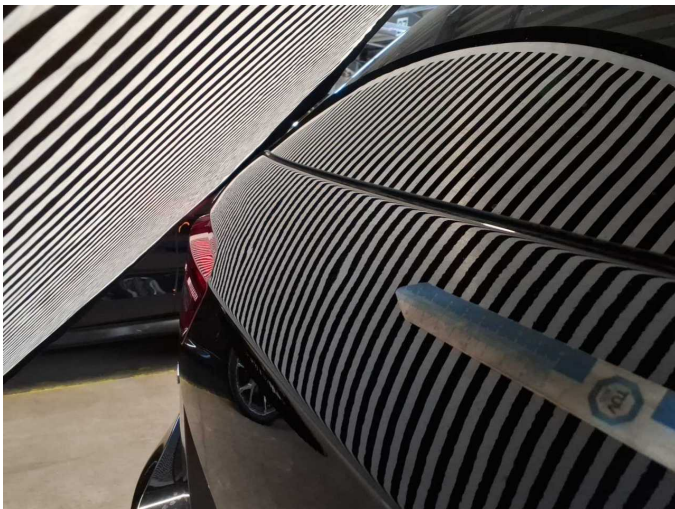
**Damage 6:** Boot lid / rear door: Boot lid - dent(s) - Smooth repair work



**Damage 6:** Boot lid / rear door: Boot lid - dent(s) - Smooth repair work



**Damage 6:** Boot lid / rear door: Boot lid - dent(s) - Smooth repair work



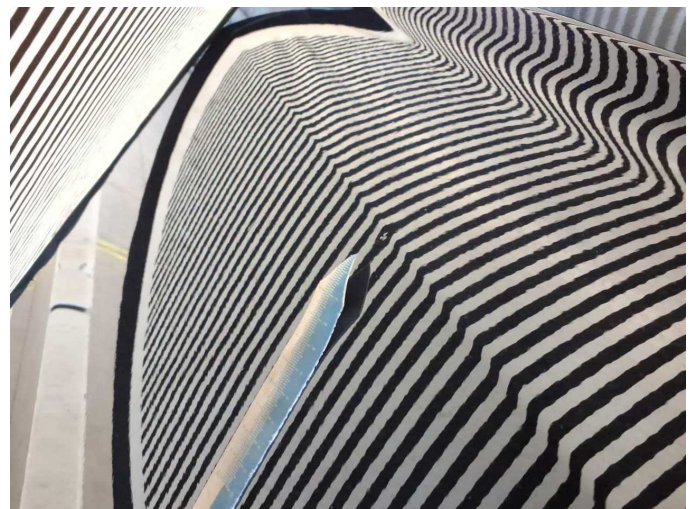
**Damage 6:** Boot lid / rear door: Boot lid - dent(s) - Smooth repair work



**Damage 7:** Door - front right side: Door - Dent / paintcoat damage - Smart repair



**Damage 7:** Door - front right side: Door - Dent / paintcoat damage - Smart repair



**Damage 7:** Door - front right side: Door - Dent / paintcoat damage - Smart repair



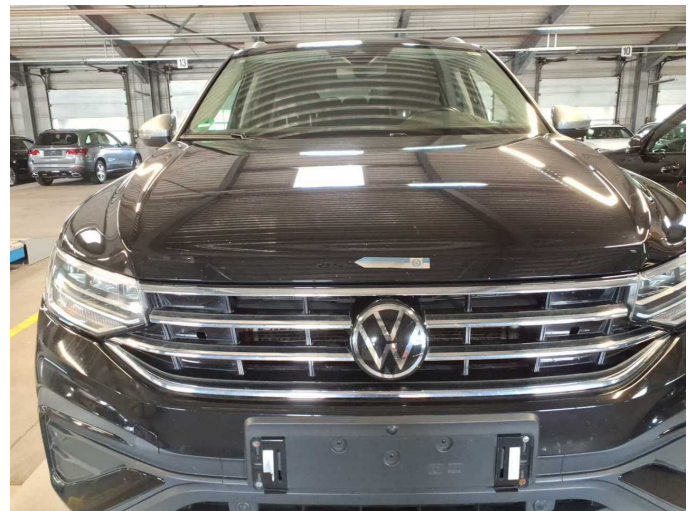
**Damage 8:** Mudguard - right side: Wheel well extension (Materialabtrag)  
- Scratched - Replace



**Damage 8:** Mudguard - right side: Wheel well extension (Materialabtrag)  
- Scratched - Replace



**Damage 8:** Mudguard - right side: Wheel well extension (Materialabtrag)  
- Scratched - Replace



**Damage 9:** Bonnet: Bonnet - Dent / paintcoat damage - Repair and paint



**Damage 9:** Bonnet: Bonnet - Dent / paintcoat damage - Repair and paint



**Damage 9:** Bonnet: Bonnet - Dent / paintcoat damage - Repair and paint



**Damage 9:** Bonnet: Bonnet - Dent / paintcoat damage - Repair and paint



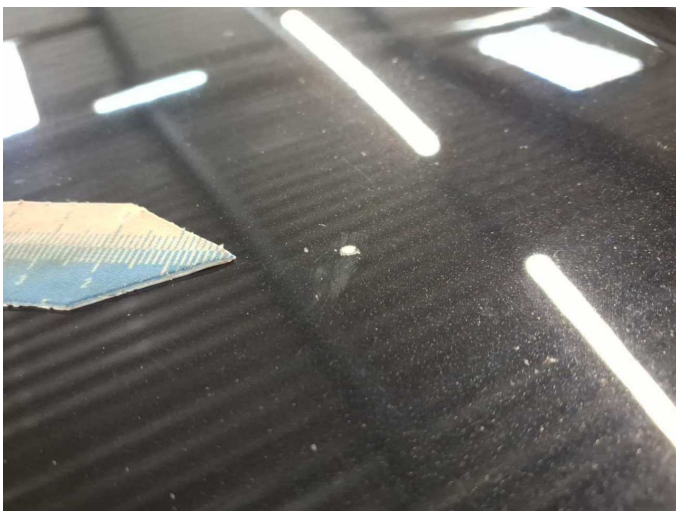
**Damage 9:** Bonnet: Bonnet - Dent / paintcoat damage - Repair and paint



**Damage 9:** Bonnet: Bonnet - Dent / paintcoat damage - Repair and paint



**Damage 9:** Bonnet: Bonnet - Dent / paintcoat damage - Repair and paint



**Damage 9:** Bonnet: Bonnet - Dent / paintcoat damage - Repair and paint



**Wear and tear 4:** Door - front left side: Door edge - Scratch(es) - Smart repair



**Wear and tear 4:** Door - front left side: Door edge - Scratch(es) - Smart repair



# Wartungshistorie

(gemäß Auftraggeber Informationen)

Fahrgestellnummer: WVGZZZ5NZNM093045

Hersteller / Modell: VOLKSWAGEN VW Tiguan Allspace 2.0 TDI SCR DSG Life

Datum	KM-Stand	Beschreibung
22.09.2025	147.403	Bremse Sonstiges; Bremsflüssigkeit; Bremsflüssigkeit ern; Bremsklötze hinten; Bremsklötze vorne; Motoröl b. Wartung; Ölfilter ern; Regelwartungsdienst; Wartung Sonstiges
10.06.2025	136.448	HU + AU; Systemtest/Eigendiagnose
19.12.2024	118.803	Bremse Sonstiges; Bremsklötze vorne; Getriebeöl ern/prüfen; Motoröl b. Wartung; Ölfilter ern; Regelwartungsdienst; Systemtest/Eigendiagnose; Wartung Sonstiges
13.05.2024	93.623	Bremse Sonstiges; Bremsklötze hinten; Bremsklötze vorne; Bremsscheiben + Klötze h; Bremsscheiben + Klötze v; Bremsscheiben hinten; Bremsscheiben vorne; Kraftstofffilter ern; Luftfiltereinsatz ern; Motoröl b. Wartung; Ölfilter ern; Regelwartungsdienst; Systemtest/Eigendiagnose; Wartung Sonstiges
25.08.2023	62.635	Motoröl b. Wartung; Ölfilter ern; Regelwartungsdienst; Wartung Sonstiges
11.05.2023	46.727	Bremse Sonstiges; Bremsklötze hinten; Bremsklötze vorne; Bremsscheiben hinten; Bremsscheiben vorne
08.02.2023	31.474	Motoröl b. Wartung; Ölfilter ern; Regelwartungsdienst; Wartung Sonstiges