

Expertise

Protocol number: 46129802
Order No. / Reference: 26349545
Inspection date: 24 Jun 2026

Manufacturer: MAN

Model: TGE 3.140 4X2F SB

VIN: WMA03VUY9P9019465



Vehicle details

Manufacturer / Type / Model / Equipment

MAN TGE 3.140 4X2F SB

Vehicle Identification number WMA03VUY9P9019465

Mileage (Read) 52,724 km

First registration 11 Apr 2023

Number of holders 1

Next periodical technical inspection 12/2027
(Report on hand)

Power / Engine displacement 103 kw / 1,968 ccm

Fuel type / Cylinder Diesel / 4

Gearbox / Number of gears Manual / 6

Type of drive Front drive

Type of vehicle Van

Colour / colour code Candy weiß

Doors / Seats 2 / 4

Upholstery type Cloth

Colour of upholstery Black

Vehicle with smoke odor no



Vehicle details

Maintenance booklet / proof	Available / complete	Next maintenance in	67 Tag(e)
Last service on / at	12/2025 at 52,493		
Key is / should be	2 / 2	FZG documents	ZB#2 (B) was available (copy), ZB#1 (S) was not available.
		Letter No.	GU301595
Previous damage / Accident	None detectable	Repainting	None detectable
Inspection conditions	sufficient	Lifting equipment / pit	No
Test drive	Not performed	Engine function test	Performed
Manufacturer key number/ type code number	1516 / AYN 61613		
Emission standard	EURO6;WLTP;AR;PI/CI;N1 III, N2	fine dust sticker	
Permitted total weight	3,500 kg	Empty weight	

Tyres

Mounted tyres

#	Tyre size	Type of tyre	Manufacturer	Tread depth
1)	205/75 R16 113R	Winter tyres on Steel rim with wheel cover	Falken	6mm / 6mm
2)	205/75 R16 113R	Winter tyres on Steel rim with wheel cover	Falken	6mm / 6mm

Replacement

Typ	Tyre size	Type of tyre	Manufacturer	Tread depth
E				

Legend: Tread depth information for the left tire is listed first, for the right tire it is listed second on the axle in the direction of travel.

TÜV SÜD Auto Partner GmbH
Wiesenring 2
04159 Leipzig

Inspection location
Mosolf SE & Co.KG
Faberweg 25
73230 Kirchheim unter Teck



Equipment



Equipment

- "Multifunction display ""Plus"" "
- "Reversing camera ""Rear View""
- "Seat ""Comfort"" left "
- Single-layer solid color - Candy white
- 2 remote flip keys
- 3-button module
- 4 speakers: 2 tweeters, 2 woofers
- 4-cyl. turbo diesel engine 2.0 l/103 KW (4V) common rail
- 4th cylinder diesel engine 2.0L unit 04L.Y
- 6-speed
- from 09.2018
- Filing package
- Electrically adjustable exterior mirrors
- Left exterior mirror, convex, with integrated LED indicator light and wide-angle range
- Exterior mirrors, electrically adjustable and heated
- Battery with increased capacity
- Hill start assist
- Operating permit supplement C38
- Floor in the cargo area
- On-board tools and jack
- Roof gallery with storage compartments, two 1-DIN slots and reading light
- Three-point automatic seat belts with belt height adjustment and electric belt tensioners at the front
- Entry handles on the rear pillars
- Factory
- Driver/passenger airbag
- Vehicle class differentiation-7C0-
- Suspension/damping and stabilization package 1
- Front drive
- All-season tyres
- Weight range front axle class 2
- Gray Mesh-Man Black/Titanium Black-Palladium/Pearl Gray
- Seatbelt monitoring, electrical contact in the seatbelt buckle
- Lockable glove compartment
- Rear wing doors 270° opening
- Rear wing doors without window cutouts
- Signposts without country group
- High roof, painted in the car's color on the outside
- Wooden floor
- Instrument cluster, display in km/h
- panel van
- No category
- Diesel fuel system
- Radiator guard, black with chrome strip
- LED interior lighting concept in the passenger/cargo area
- Steering wheel
- LNFZ version with up to 3 seats
- MAN Media Van
- "Region code" "ECE" "for radio"
- "Front disc brakes, 16"" "
- "Seat ""Standard"" right "
- 1968ccm (2.0 Ltr) 103kW
- 205/75 R 16 C
- 4 speakers
- 4 steel wheels 6 1/2 J x 16, with a load capacity of 1,050 kg, in silver
- 4490mm with extended frame (L5)
- 6.5 J x 16
- Exhaust concept, EU6 AR
- Airbag for driver and front passenger with front passenger airbag deactivation
- Right-hand exterior mirror, convex, with integrated LED indicator light and wide-angle range
- 520A (92Ah) battery
- Component set without country-specific building regulations
- Operating voltage 12 V
- Onboard literature in German
- CO2-optimized variant
- Digital radio reception (DAB+)
- Three-phase generator 140 A
- A tow hook at the front
- Entry handle on the partition wall in the cargo area
- Electronic Stability Program (ESP) and ABS with electronic differential lock
- Cab doors, additionally with reinforced door hinges on the driver's side
- Front Assist with City Emergency Braking function
- Radio frequency 433 MHz
- Generator 140 A
- Weight class front axle, weight range 2
- Rubber flooring in the driver's cab
- Halogen dual headlights
- Handbrake lever, standard
- Glove compartment with lockable, illuminated flap
- Rear wing doors with an enlarged opening angle
- Heating in the driver's cab, electronically controlled
- High roof (H2)
- Wooden floor in the cargo area with wheel arch cladding
- Interior noise dampening measures Plus
- Instrument panel
- Not a special vehicle, standard version
- Initial fuel fill with 15 liters
- Fuel tank 75l
- LED interior lighting
- Unladen weight range 3
- Left-hand drive
- MAN brand/class specific features
- MAN Media Van package with 4 speakers
- Side marker lights



- MAN SmartLink
- With first-aid supplies and a warning triangle
- Standard engine start
- Not hot country
- Without a second battery
- Without overhead storage tray
- Without an acoustic warning system for reverse gear engaged
- Without armrests, on the far left and far right, on all available rows of seats in the passenger compartment
- Without battery master switch
- Without roof-mounted turn signals
- Without roof vents in the passenger/cargo area
- Without differential lock
- Without parking assistance
- Without high beam assist
- Without speed warning system
- No speed limit
- Without refrigerant compressor / without preparation
- Without air/water auxiliary heater
- Without navigation system
- Without power take-off from the gearbox
- Without rotating beacons
- Without sliding door, on the left, in the cargo/passenger compartment (closed side wall)
- Without side airbags
- Without side window opening in the cargo area, rear right
- Without side window opening in the cargo area, center right
- Without rearview mirror
- Without seats, in the 3rd row of seats
- Without seat heating
- Without voice control
- No power outlets in the passenger/cargo area
- Without tachograph
- Without step lighting
- Without traffic sign recognition
- Without a maintenance contract
- Without auxiliary heating
- Online service, with OCU, without head unit coding, without WFS network
- Digital radio reception
- Long wheelbase 4,490 mm with long overhang
- Smoker's package
- Legal transactions
- Tires without specifying the tire brand
- Spare wheel (steel rim) with driving tires
- Rear view camera
- 6-speed manual transmission
- Sliding door, right
- Lettering for type, tonnage and horsepower
- Crosswind assist
- Side interior paneling in the cargo area made of plastic, extending to the roof frame
- Mobile phone interface
- National registration documentation Germany
- Emergency brake assist
- Without a second heat exchanger and without a second evaporator.
- Without tow hitch
- Without extended warranty
- Without increasing or decreasing the permissible total weight
- Without chrome package
- Without roof interior trim
- Without roof rails / roof rack
- Without constant speed control
- Without electrical terminal block and without KFG
- Without specifying the weight class for the rear axle
- Without rear window
- Without child safety locks in the passenger compartment
- Without a loading ramp
- Without fatigue detection
- Without fog lights
- Without tire pressure monitoring system
- Without headlight cleaning system
- Without mudguards
- Without protective frame
- Without side window opening in the cargo area, rear left
- Without side window opening in the cargo area, center left
- Without side window opening in the cargo area, front left
- Without side window opening in the cargo area, front right
- Without seats, in the 2nd row of seats
- Without seats, in the 4th row of seats
- Without special measures
- Without lane keeping assist and without lane change assist
- without cruise control
- Without wedge(s)
- Without preparation for a second three-phase generator
- Without additional malfunction indicator
- Without additional winter tires
- Center wheel cover
- Center wheel cover with chrome emblem
- Wheel bolts without wheel locking mechanism
- Smoker's version: 12V socket with cigarette lighter, ashtray, 4 cup holders in the dashboard
- Tires 205/75 R 16 C 113/111, optimized for rolling resistance
- Spare wheel in driving tire size, steel, as well as on-board tools and jack
- Windscreen wiper intermittent control
- Sliding door, right, in the cargo/passenger compartment
- Front and rear side windows and rear window in heat-insulating glass
- Side marker lights
- Service indicator: 50,000 km or 2 years (variable)
- Fabric seat covers
- Special EC type plate for commercial vehicles
- Start-stop system
- Front bumper in grey with painted trim in body color



- Seat covers in "Toronto Grid" fabric
 - Sun visors, foldable and swiveling to the side
 - Standard climate zones
 - Start-stop system with brake energy recuperation
 - Daytime running light
 - Partition wall
 - Rear step
 - Carrier frequency 433.92 to 434.42 MHz
 - USB dual function module 45W
 - Lashing rails (airline) in the cargo area: side walls
 - Front axle (1,800 kg load capacity)
 - Electronic immobilizer
 - Central locking with remote control and interior operation
 - Registration as a truck with an N1 registration (up to and including 3.5t permissible total weight)
- Transport protection measures without surface protection film
 - Rear step, across the entire width
 - Type testing country: Germany
 - Laminated glass windshield in heat-insulating glazing
 - Lashing eyes for securing cargo
 - Front axle weight version 1
 - Central locking with remote control
 - Approval as 3.5t
 - Permitted total weight 3,500 kg
 - Two 12V sockets in the driver's cab (in the instrument panel)

Brief expert findings

Documents submitted	At the time of the inspection, the vehicle registration certificate Part 2 (title) was available, but the vehicle registration certificate Part 1 (document) was not. (Copy)
VIN comparison	The vehicle identification number (VIN) was read from the vehicle and its conformity with the submitted documents was confirmed by the undersigned during the inspection.
Inspection	The inspection conditions were sufficient for the assessment of the vehicle. No lifting equipment or pit was available for inspecting the vehicle. Therefore, inspection of the vehicle's underside was only possible to a limited extent.
Test drive	No test drive/shunting maneuver was carried out during the inspection of the vehicle.
Engine function test	An engine test run was performed.

Value reducing factors

No.	Component group	Description
1	Front bumper	Front bumper (unpainted) (Blend) - Scratch(es) - Loss in value
2	Side panel - rear right side	Side panel - Dent / paintcoat damage - Smart repair
3	Body	Body - Glued / labelled - De-glue / neutralise
4	Boot lid / rear door	Rear door - left side - Dent / paintcoat damage - Repair and paint

Wear and tear

No.	Component group	Description
1	Interior	Interior - Soiled - No deduction
2	Body	Body - Dent / paintcoat damage - No deduction
3	Vehicle glazing	Windscreen - Stone chips - No deduction
4	Boot lid / rear door	Rear door - right side - dent(s) - No deduction
5	Rear bumper	Rear bumper (unpainted) (Tritbrett) - Scratch(es) - No deduction
6	Interior	Interior - Dent / paintcoat damage - No deduction

The vehicle shows signs of wear and tear commensurate with its age and use.



Order/Scope of Order

An order was placed to prepare a sales report for the described vehicle. This report includes the following:

- Description of key vehicle information
- Documentation of equipment features
(Delivery by third-party service providers)
- Documentation of damage, defects, missing parts
- Documentation of prior damage, unrepaired prior damage, repainting
- A brief visual or functional inspection of the equipment details, if possible.
(Functional testing of driver assistance systems is not included in the scope of services!)
- a photographic documentation of the vehicle

Basis for the order

This product is based on the guidelines for vehicle returns and valuations of light commercial vehicles published by Alphabet Fleet Management GmbH. The expert makes the specific findings in each individual case objectively, within the framework of the prescribed standards, based on their own expertise.

The vehicle inspection takes place in a fully assembled, unassembled state.

Damage or defects that can only be detected during disassembly/diagnostic work or through further investigation remain within the realm of prognostic risk. An increased risk exists due to concealed defects caused by fraudulent misrepresentation and which were not identifiable by the expert.

Damage or defects resulting from normal use or wear and tear of the vehicle will be accepted in accordance with the applicable standard.

There was no explicit identification or monetary consideration of the expected features within the product.

Features which, in their nature and extent, slightly exceed normal use but do not constitute unacceptable damage, will be documented and indicated as signs of wear, if applicable.

Damage or defects that, according to the applicable standard, can no longer be attributed to normal use or wear and tear are listed under "Value Reducing Factors" in the product description.

Depending on the product specification, a monetary ID can be provided. If this takes place, the costs can be 100% d or pro rata depending on the vehicle's age and mileage.

Previous damages

No apparent prior damage that had been repaired could be found on the vehicle.

Comments

Das Fahrzeug kann nicht ordnungsgemäß angehoben werden.

Unter der Beklebung sind weitere Schäden möglich.



Figure 1: Diagonal front (left)



Figure 2: Diagonal front (right)



Figure 3: Diagonal rear (left)



Figure 4: Diagonal rear (right)

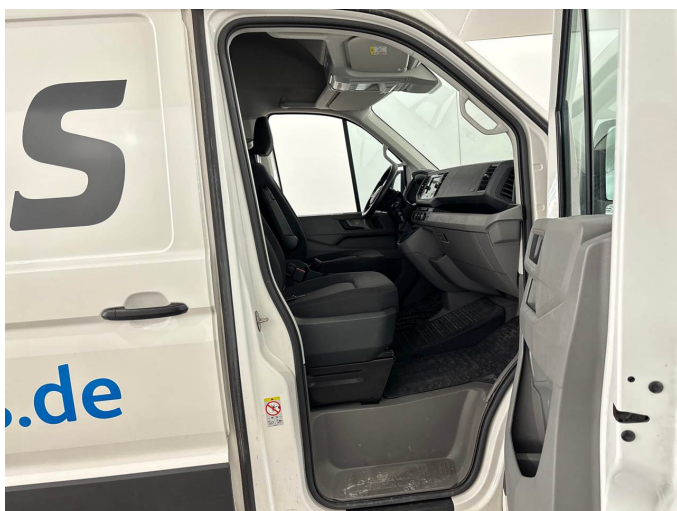


Figure 5: Interior - front



Figure 6: Interior - rear



Figure 7: Instrument cluster



Figure 8: Instrument panel



Figure 9: Interior 360° view

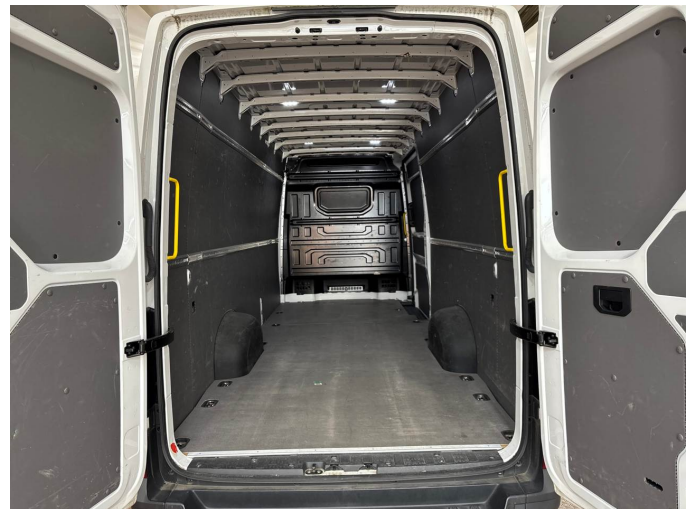


Figure 10: Cargo area



Figure 11: VIN



Figure 12: Mounted tyres

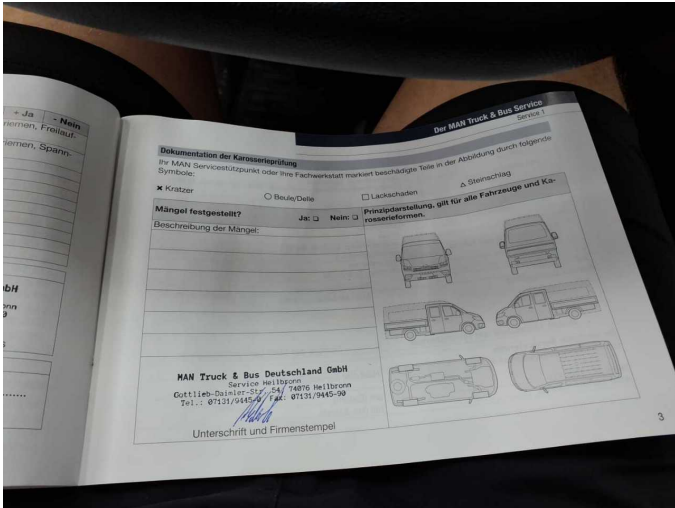


Figure 13: Documents

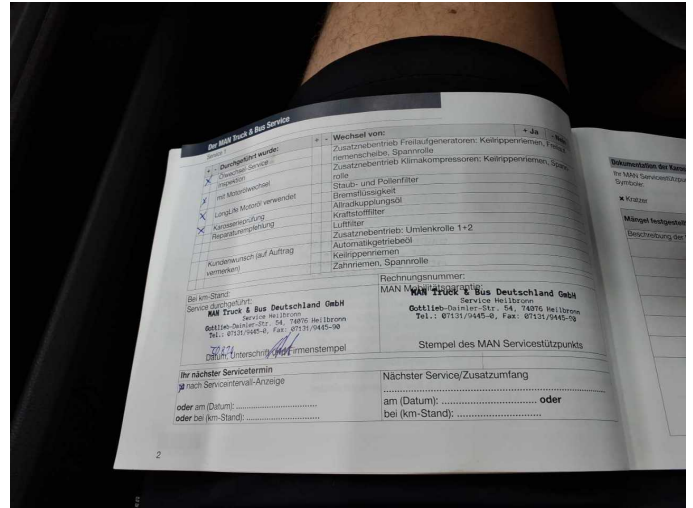


Figure 14: Documents



Figure 15: Documents



Figure 16: Documents

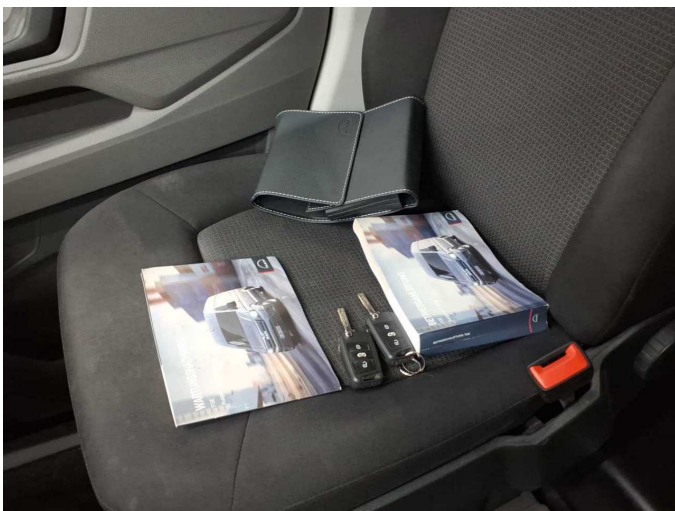


Figure 17: Documents



Figure 18: Misc.



Figure 19: Misc.



Figure 20: Misc.



Figure 21: Misc.



Figure 22: Misc.



Figure 23: Misc.



Figure 24: Misc.



Figure 25: Misc.



Figure 26: Misc.



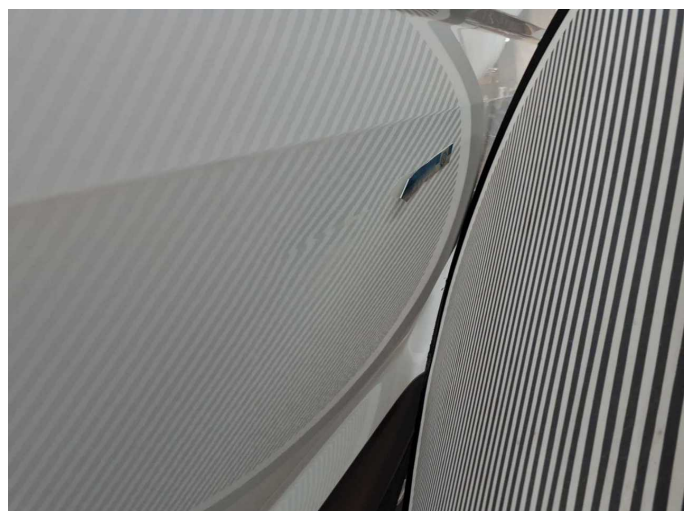
Damage 1: Front bumper: Front bumper (unpainted) (Blend) - Scratch(es) - Loss in value



Damage 1: Front bumper: Front bumper (unpainted) (Blend) - Scratch(es) - Loss in value



Damage 2: Side panel - rear right side: Side panel - Dent / paintcoat damage - Smart repair



Damage 2: Side panel - rear right side: Side panel - Dent / paintcoat damage - Smart repair



Damage 2: Side panel - rear right side: Side panel - Dent / paintcoat damage - Smart repair



Damage 2: Side panel - rear right side: Side panel - Dent / paintcoat damage - Smart repair



Damage 3: Body: Body - Glued / labelled - De-glug / neutralise



Damage 3: Body: Body - Glued / labelled - De-glug / neutralise



Damage 3: Body: Body - Glued / labelled - De-glug / neutralise



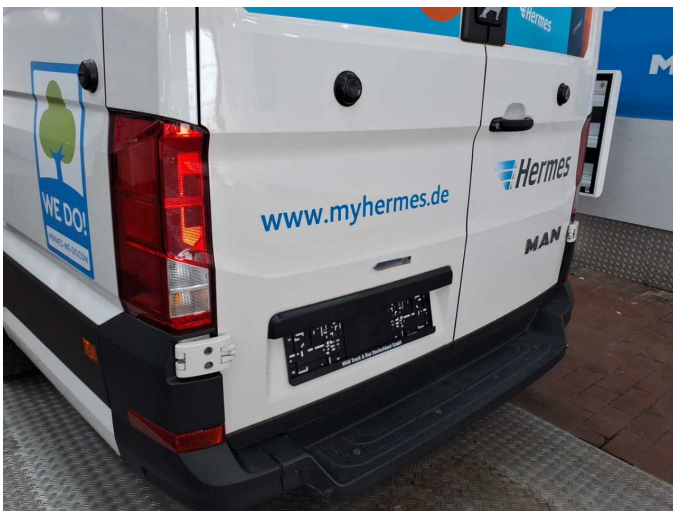
Damage 3: Body: Body - Glued / labelled - De-glug / neutralise



Damage 3: Body: Body - Glued / labelled - De-glove / neutralise



Damage 3: Body: Body - Glued / labelled - De-glove / neutralise



Damage 4: Boot lid / rear door: Rear door - left side - Dent / paintcoat damage - Repair and paint



Damage 4: Boot lid / rear door: Rear door - left side - Dent / paintcoat damage - Repair and paint



Damage 4: Boot lid / rear door: Rear door - left side - Dent / paintcoat damage - Repair and paint



Damage 4: Boot lid / rear door: Rear door - left side - Dent / paintcoat damage - Repair and paint



Damage 4: Boot lid / rear door: Rear door - left side - Dent / paintcoat damage - Repair and paint



Wartungshistorie

(gemäß Auftraggeber Informationen)

Fahrgestellnummer: WMA03VUY9P9019465

Hersteller / Modell: MAN MAN TGE 3.140 4X2F SB

Datum	KM-Stand	Beschreibung
20.12.2025	52.493	AU; Systemtest/Eigendiagnose; Wartung Sonstiges
09.10.2024	41.126	Wartung Sonstiges