

## Expertise

Protocol number: 46220451  
Order No. / Reference: 26223211-1  
Inspection date: 12 May 2026

Manufacturer: Volkswagen

Model: Transporter T6.1 TDI SCR DSG 4motion Kurz Sortimo-  
Regalsystem

VIN: WV1ZZZ7H6PX037218



### Vehicle details

#### Manufacturer / Type / Model / Equipment

Volkswagen Transporter T6.1 TDI SCR DSG 4motion Kurz Sortimo-  
Regalsystem

**Vehicle Identification number** WV1ZZZ7H6PX037218

**Mileage (Read)** 46,304 km

**First registration** 28 Jul 2023

**Number of holders** 1

**Next periodical technical inspection** 01/2028

(Report not on hand)

**Power / Engine displacement** 110 kw / 1,968 ccm

**Fuel type / Cylinder** Diesel / 4

**Gearbox / Number of gears** Automatic / 7

**Type of drive** All-wheel drive

**Type of vehicle** Van

**Colour / colour code** Candy White (B9A)

**Doors / Seats** 4 / 2

**Upholstery type** Cloth

**Colour of upholstery** Grey-Black

**Re-import** no

**readiness to drive** Roadworthy



## Vehicle details

<b>Maintenance booklet / proof</b>	digital proof / complete	<b>Next maintenance in</b>	22,900 km
<b>Last service on / at</b>	04/2025 at 40,513 km		
<b>Key is / should be</b>	2 / 2	<b>FZG documents</b>	ZB#2 (B) was available (copy), ZB#1 (S) was not available.
		<b>Letter No.</b>	GS502599
<b>Previous damage / Accident</b>	None detectable	<b>Repainting</b>	None detectable
<b>Inspection conditions</b>	sufficient	<b>Lifting equipment / pit</b>	yes
<b>Test drive</b>	Not performed	<b>Engine function test</b>	Performed
<b>readiness to drive</b>	Roadworthy		
<b>Manufacturer key number/ type code number</b>	0603 / BXT 79636		
<b>Emission standard</b>	EURO6;WLTP;AR;PI/CI;N1 III, N2	<b>fine dust sticker</b>	
<b>Permitted total weight</b>	2,800 kg	<b>Empty weight</b>	

## Tyres

### Mounted tyres

#	Tyre size	Type of tyre	Manufacturer	Tread depth
1)	215/65 R16 109R	Winter tyres on Steel rim with wheel cover	Semperit	8mm / 8mm
2)	215/65 R16 109R	Winter tyres on Steel rim with wheel cover	Semperit	7mm / 7mm

### Additional tyres

#	Tyre size	Type of tyre	Manufacturer	Tread depth
1)	205/65 R16 107T	Summer tyres on Steel	Hankook	4mm / 4mm
2)	205/65 R16 107T	Summer tyres on Steel	Hankook	1mm / 1mm

### Replacement

Typ	Tyre size	Type of tyre	Manufacturer	Tread depth
E	205/65 R16 107T	Summer tyres on Steel	Hankook	6 mm

**Legend: Tread depth information for the left tire is listed first, for the right tire it is listed second on the axle in the direction of travel.**



## Equipment

### Standard equipment

- Storage and stowage boxes
- 4MOTION all-wheel drive (permanent)
- Exterior mirrors, left and right convex
- Floor coverings: Rubber floor covering in the driver's cab
- Braking systems: Electronic Stability Program, ABS, ASR (with deactivation button), EDS
- Chassis: Suspension and damping, standard
- Fresh air system with multi-stage fresh air blower
- Tailgate without window
- Heating and ventilation system in the driver's cab
- Headrests (2)
- Paint finish: Solid
- Multi-collision brake
- Particulate filter: Soot particle filter for diesel engines
- "Composition Audio" radio with TFT display (monochrome)
- Radio accessories: 2 speakers (wideband)
- Wheels/Tires: Steel wheels 6.5 J x 16 in 20-hole design
- Wheels/Tire Accessories: Wheel covers for 16" wheels
- Sliding door in the passenger/cargo compartment: sliding door on the right
- electromechanical power steering
- Start-stop system
- Telephone: Mobile phone interface
- Lashing eyes for securing cargo
- Green thermal insulation glazing
- Registration as a truck
- Airbag for driver and front passenger
- Electrically adjustable and heated exterior mirrors
- Hill Start Assist
- third brake light
- Tachometer
- Chassis: 16" chassis with 16" brake system
- Electric windows, front
- Transmission: DSG (dual-clutch transmission), 7-speed automatic
- Child safety lock, electrically operated
- Fuel tank with a 70-liter tank capacity
- Headlight range control
- Non-smoking version
- Upholstery: Seat covers in fabric, "Double Grid" design
- Radio: Digital radio reception (DAB+)
- Wheels/Tires: 205/65 R 16 C 107/105 T, optimized for low rolling resistance
- Wheels: Tire Mobility Set
- Keys for locking system: 2 remote control flip keys
- Crosswind assist
- Seat belts: Three-point automatic seat belts
- Daytime running light
- First aid kit, warning triangle and high-visibility vest
- Electronic immobilizer
- Central locking with remote control and interior operation



## Extra equipment

- Airbag: Side and head airbags for driver and front passenger
- Driver assistance systems: Rearview camera "Rear View" ((static lines))
- Windows: Front window and closed rear side wall, in the cargo/passenger compartment, left
- Fleet management system interface (electrical terminal block and function control unit 1 with body manufacturer (ABH) programming)
- Cruise control system including speed limiter
- Glove compartment with light
- Heating: Fuel-powered auxiliary heater
- Interior paneling: Side panels in the passenger/cargo area, made of hardboard (half-height in vehicles with window cutouts)
- LED headlights and LED taillights (LED headlights with LED daytime running lights - automatic headlight range control - red LED taillights)
- Package: Comfort Package Plus (2 12-volt sockets, air conditioning in the driver's cab with manual control, fabric seat covers, "Bricks" design, 1 waste bin for the door pockets in the driver's cab, additional soundproofing measures in the driver's cab, height adjustment for the left individual seat in the driver's cab, glove compartment with light, sun visors with mirrors and airbag label on the passenger sun visor, grab handle for entry on the A-pillar, on the driver and passenger, manual lumbar support for the left individual seat in the 1st row of seats)
- Wheels/Tires: Spare wheel (steel rim) with driving tires
- Heated front windshield washer nozzles and washer fluid level indicator
- Sortimo installation (external)
- Auxiliary heater: Windscreen defrosting and heating/ventilation of the driver's cab
- Batteries: 2nd battery (75 Ah, AGM) with isolating relay and battery monitoring
- Windows (glass type in the cargo/passenger compartment) (front side windows in heat-insulating glass, rear side windows and rear window tinted (privacy))
- Windows: Front window and closed rear side wall, in the cargo/passenger compartment, right
- Total weight: Permissible total weight 3.2 t with reinforced 16" steel wheels (4 steel wheels 6.5 J x 16 - Permissible total weight 3,200 kg - Suspension and damping, for vehicles with 3.2 t permissible total weight - On-board tools and jack, reinforced, for vehicles with 3.2 t GVW)
- Air conditioning with manual control in the driver's cab, with additional heating for the cargo/passenger compartment
- Steering wheel: Multifunction leather steering wheel (3 spokes)
- Multifunction display "Plus" with fatigue detection (Multifunction display "Plus" with black and white display)
- ParkPilot in the front and rear areas
- Upholstery: Robust fabric seat covers, "Robusta" design in the driver's cab (artificial leather, "Mesh" design for existing seats in the passenger compartment)
- Radio navigation system "Discover Media" including "Streaming & Internet" (voice control - 2 USB interfaces (Type C) in the dashboard - "Discover Media" radio navigation system with 20.3 cm (8 inch) touchscreen including "Streaming and Internet" - navigation function/preparation - 4 speakers: 2 tweeters, 2 woofers - Wired & Wireless App-Connect)
- Heated seats for the driver's cab, left and right, separately adjustable
- Power outlets: 2 12-volt sockets in the dashboard

## Brief expert findings

Documents submitted	At the time of the inspection, the vehicle registration certificate Part 2 (title) was available, but the vehicle registration certificate Part 1 (document) was not. (Copy)
VIN comparison	The vehicle identification number (VIN) was read from the vehicle and its conformity with the submitted documents was confirmed by the undersigned during the inspection.
Inspection	The inspection conditions were sufficient for the assessment of the vehicle. Lifting equipment and/or a pit were available for examining the vehicle.
Test drive	No test drive/shunting maneuver was carried out during the inspection of the vehicle.
Engine function test	An engine test run was performed.
readiness to drive	The vehicle was roadworthy at the time of inspection.

## Value reducing factors

No.	Component group	Description
1	Door - front right side	Door - Scratch(es) - Smart repair
2	Door - rear right side	Door - Scratch(es) - Smart repair
3	Body	Body - Glued / labelled - De-glue / neutralise
4	2nd wheel set	2 tyres (Sommerreifen Profiltiefe <2mm) - Worn - Replace
5	Vehicle glazing	Windscreen - Broken / torn - Replace



## Wear and tear

No.	Component group	Description
1	Trim / covers	Boot lid - interior trim - Scratch(es) - No deduction
2	Boot lid / rear door	Boot lid - Dent / paintcoat damage - No deduction
3	Rear bumper	Rear bumper - Scratch(es) - No deduction
4	Bonnet	Bonnet - Stone chips - No deduction
5	Front bumper	Front bumper (unpainted) - Scratch(es) - No deduction
6	Roof	Roof - dent(s) - No deduction
7	Interior	Cargo space partition (Sortimo Regaleinbauten) - Differs from the original configuration - No deduction

The vehicle shows signs of wear and tear commensurate with its age and use.

## Order/Scope of Order

An order was placed to prepare a sales report for the described vehicle. This report includes the following:

- Description of key vehicle information
- Documentation of equipment features  
(*Delivery by third-party service providers*)
- Documentation of damage, defects, missing parts
- Documentation of prior damage, unrepaired prior damage, repainting
- A brief visual or functional inspection of the equipment details, if possible.  
(*Functional testing of driver assistance systems is not included in the scope of services!*)
- a photographic documentation of the vehicle

## Basis for the order

This product is based on the guidelines for vehicle returns and valuations of light commercial vehicles published by Alphabet Fleet Management GmbH. The expert makes the specific findings in each individual case objectively, within the framework of the prescribed standards, based on their own expertise.

The vehicle inspection takes place in a fully assembled, unassembled state.

Damage or defects that can only be detected during disassembly/diagnostic work or through further investigation remain within the realm of prognostic risk. An increased risk exists due to concealed defects caused by fraudulent misrepresentation and which were not identifiable by the expert.

Damage or defects resulting from normal use or wear and tear of the vehicle will be accepted in accordance with the applicable standard.

There was no explicit identification or monetary consideration of the expected features within the product.

Features which, in their nature and extent, slightly exceed normal use but do not constitute unacceptable damage, will be documented and indicated as signs of wear, if applicable.

Damage or defects that, according to the applicable standard, can no longer be attributed to normal use or wear and tear are listed under "Value Reducing Factors" in the product description.

Depending on the product specification, a monetary ID can be provided. If this takes place, the costs can be 100% d or pro rata depending on the vehicle's age and mileage.

## Previous damages

No apparent prior damage that had been repaired could be found on the vehicle.

## Comments

- Für den montierten Radsatz wurde kein Nachweis erbracht.
- Winterradsatz ist kein Bestandteil des Auslieferungsumfangs.



Figure 1: Diagonal front (left)



Figure 2: Diagonal front (right)



Figure 3: Diagonal rear (left)



Figure 4: Diagonal rear (right)

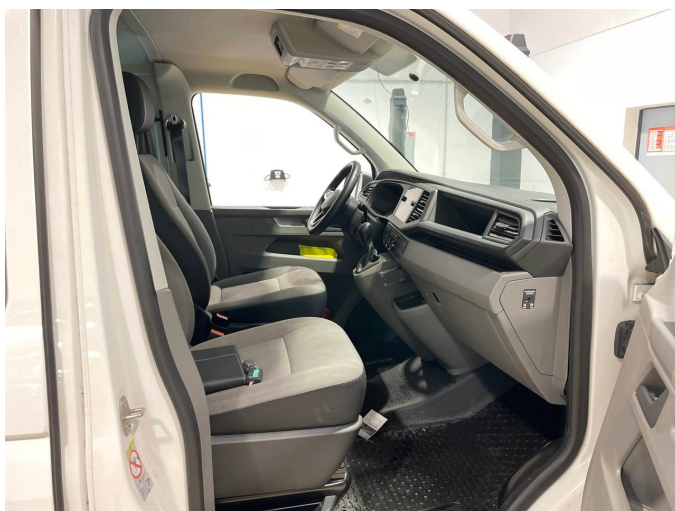


Figure 5: Interior - front

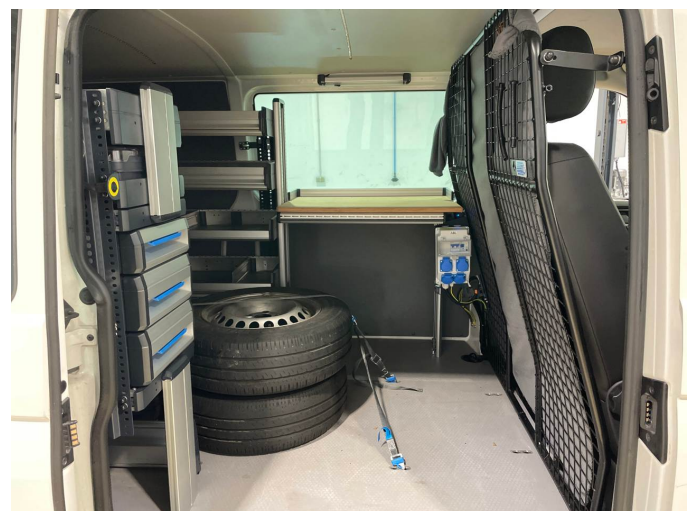


Figure 6: Interior - rear



Figure 7: Instrument cluster



Figure 8: Instrument panel

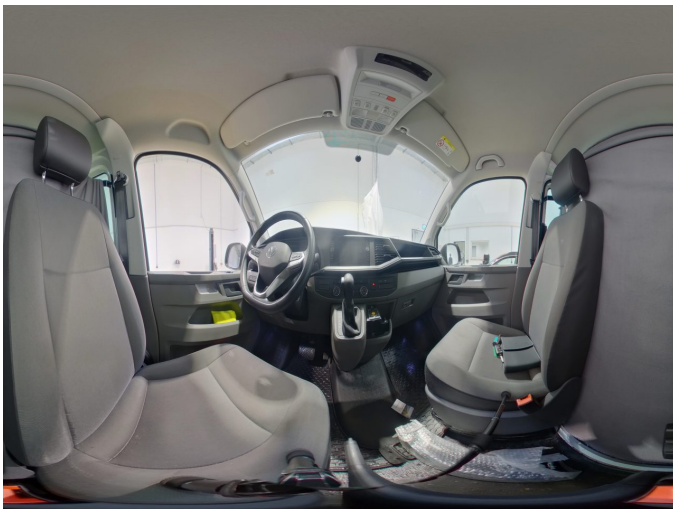


Figure 9: Interior 360° view



Figure 10: Cargo area

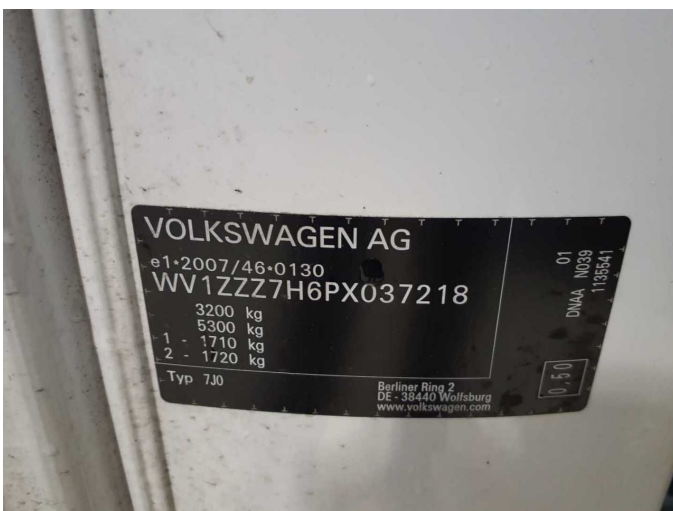


Figure 11: VIN



Figure 12: Mounted tyres



Figure 13: Documents



Figure 14: Additional tyres



Figure 15: Additional tyres



Figure 16: Navigation



Figure 17: Misc.



Figure 18: Misc.



Figure 19: Misc.



Figure 20: Misc.

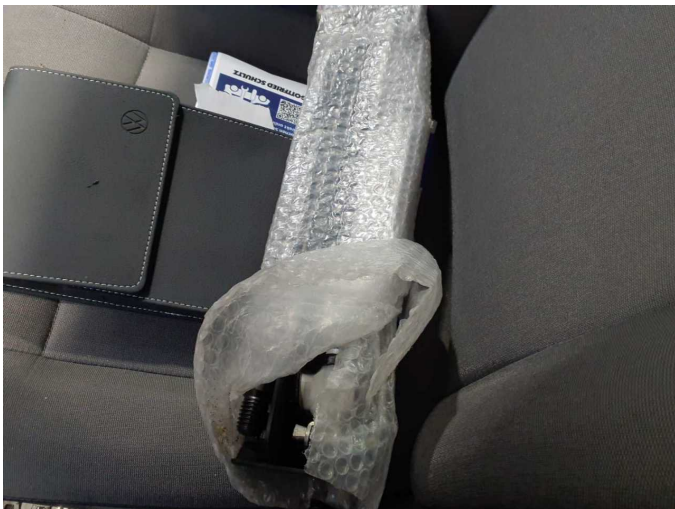


Figure 21: Misc.



Figure 22: Misc.



Figure 23: Misc.

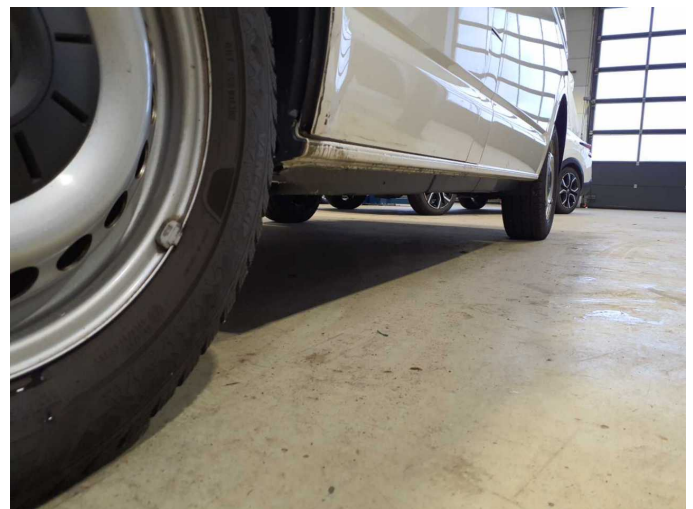


Figure 24: Misc.



Figure 25: Misc.



Figure 26: Misc.



Figure 27: Misc.



Figure 28: Misc.



Figure 29: Misc.



Figure 30: Misc.



Figure 31: Misc.



Figure 32: Misc.



Figure 33: Misc.



Damage 1: Door - front right side: Door - Scratch(es) - Smart repair



Damage 1: Door - front right side: Door - Scratch(es) - Smart repair



Damage 2: Door - rear right side: Door - Scratch(es) - Smart repair



**Damage 2:** Door - rear right side: Door - Scratch(es) - Smart repair



**Damage 3:** Body: Body - Glued / labelled - De-glue / neutralise



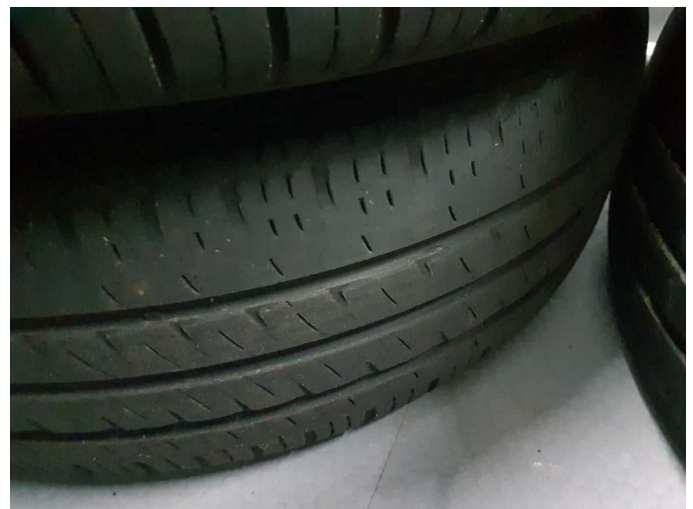
**Damage 3:** Body: Body - Glued / labelled - De-glue / neutralise



**Damage 4:** 2nd wheel set: 2 tyres (Sommerreifen Profiltiefe <2mm) - Worn - Replace



**Damage 4:** 2nd wheel set: 2 tyres (Sommerreifen Profiltiefe <2mm) - Worn - Replace



**Damage 4:** 2nd wheel set: 2 tyres (Sommerreifen Profiltiefe <2mm) - Worn - Replace



**Damage 4:** 2nd wheel set: 2 tyres (Sommerreifen Profiltiefe <math>< 2\text{mm}</math>) - Worn - Replace



**Damage 5:** Vehicle glazing: Windscreen - Broken / torn - Replace



**Damage 5:** Vehicle glazing: Windscreen - Broken / torn - Replace