

## Expertise

Protocol number: 46364365  
Order No. / Reference: 26469958  
Inspection date: 2 Jul 2026

Manufacturer: Volkswagen

Model: Golf Variant 2.0 TDI SCR DSG R-Line

VIN: WVVZZZCDZNW531575



### Vehicle details

#### Manufacturer / Type / Model / Equipment

Volkswagen Golf Variant 2.0 TDI SCR DSG R-Line

**Vehicle Identification number** WVVZZZCDZNW531575

**Mileage (Read)** 174,110 km

**First registration** 26 Jul 2022

**Number of holders** 1

**Next periodical technical inspection** 10/2027  
(Report on hand)

**Power / Engine displacement** 110 kw / 1,968 ccm

**Fuel type / Cylinder** Diesel / 4

**Gearbox / Number of gears** Automatic / 7

**Type of drive** Front drive

**Type of vehicle** Station wagon

**Colour / colour code** Delfingrau Metallic

**Doors / Seats** 5 / 5

**Upholstery type** Cloth / leather  
combination

**Colour of upholstery** Anthracite

**Type of use** rental car



Vehicle details			
<b>Maintenance booklet / proof</b>	digital proof / complete	<b>Next maintenance in</b>	3,800 km
<b>Last service on / at</b>	10/2025 at 150,640 km		
<b>Key is / should be</b>	2 / 2	<b>FZG documents</b>	ZB#2 (B) was available (copy), ZB#1 (S) was not available.
		<b>Letter No.</b>	GJ202380
<b>Previous damage / Accident</b>	None detectable	<b>Repainting</b>	None detectable
<b>Inspection conditions</b>	sufficient	<b>Lifting equipment / pit</b>	No
<b>Test drive</b>	Not performed	<b>Engine function test</b>	Performed
<b>Manufacturer key number/ type code number</b>	0603 / CNN 01275		
<b>Emission standard</b>	EURO6;WLTP;AP;PI/CI; M, N1 I	<b>fine dust sticker</b>	
<b>Permitted total weight</b>	2,060 kg	<b>Empty weight</b>	

## Tyres

Mounted tyres				
#	Tyre size	Type of tyre	Manufacturer	Tread depth
1)	205/55 R16 91H	Winter tyres on Light alloy	Goodyear	3mm / 3mm
2)	205/55 R16 91H	Winter tyres on Light alloy	Goodyear	6mm / 6mm
Replacement				
Typ	Tyre size	Type of tyre	Manufacturer	Tread depth
	Tirefit	Expiration date 04/2026		

**Legend: Tread depth information for the left tire is listed first, for the right tire it is listed second on the axle in the direction of travel.**



## Equipment

### Standard equipment

- Airbag for driver and front passenger
- 30-color ambient lighting
- App-Connect
- Exterior mirror housings and door handles in body color
- third brake light
- Car2X
- Decorative inlays "Carbon Grey"
- Digital Cockpit Pro, multicolor
- Electronic differential lock XDS
- Electronic stability program and electromechanical brake booster
- Driving profile selection
- Electric windows, front and rear
- Pedestrian protection measures expanded
- luggage compartment cover
- Transmission: 7-speed DSG
- Rear window wiper with intermittent function
- ISOFIX mounting points
- Rear headrests (3)
- LED reading lights at the front (2) and 2 at the rear
- LED headlights
- Dynamic headlight range control
- Fatigue detection
- Emergency braking assistant "Front Assist" with pedestrian and cyclist detection
- Brushed stainless steel pedals
- Radio "Composition"
- Wheels: Alloy wheels (4) "Valencia" 7.5 J x 17 in grey metallic
- Keyless start system without safe locking
- Seat belts: Three-point automatic seat belt for the middle rear seat
- Seat belts: Three-point automatic seat belts at the front with height adjustment and belt tensioner
- Seats: Top sports seats in the front
- Start-stop system
- Bumpers in body color
- Textile floor mats front and rear
- Electronic immobilizer
- Central locking without safe locking, with remote control and 2 remote folding keys
- Airbag: Head airbag system for front and rear passengers including front side airbags
- Electrically adjustable and heated exterior mirrors with memory function and passenger-side mirror lowering function.
- black roof rails
- Diesel particulate filter and SCR catalyst
- Parking assistance
- Electronic parking brake including auto-hold function
- Automatic headlight control, with LED daytime running lights
- Chassis: Sport chassis
- Windscreen made of laminated safety glass, heat and sound insulating
- Speed limiter
- Rear window heated
- Rear spoiler in car color
- "Climatronic" air conditioning system
- Front headrests
- LED taillights
- Steering wheel: Multifunction sports steering wheel in leather, with touch controls and paddle shifters
- Non-smoking version
- Emergency call service
- Package: Seat Comfort Package
- Progressive steering
- Tire pressure monitoring system (passive)
- Wheels: Tire Mobility Set
- Rear bench seat undivided, backrest asymmetrically split and foldable with center armrest
- Seat belts: Three-point automatic seat belts for the outer rear seats
- Seat covers in "R-Line" fabric
- Seats: Lumbar support in the front
- Lane keeping assistant "Lane Assist"
- 12-volt power outlet in the luggage compartment
- Telephone interface with inductive charging function
- Ambient lighting with logo projection
- Green thermal insulation glazing, sides and rear



## Extra equipment

- Illuminated strip between headlights and door handle recesses
- IQ.LIGHT - LED matrix headlights, including Light and Sight package (Dynamic Light Assist high beam control for LED matrix headlights - Automatically dimming interior mirror - IQ.LIGHT - LED matrix headlights with LED daytime running lights, cornering lights and dynamic turn signals - LED taillights with dynamic turn signals - Dynamic headlight range control with dynamic cornering lights - Multifunction camera - Rain sensor - Bad weather lights and cornering lights)
- Paint finish: Metallic
- Package: Business Premium incl. navigation system (R-Line DSG) (6+1 speakers, App-Connect incl. App-Connect Wireless for Apple CarPlay, Android Auto, automatic distance control, adaptive cruise control (ACC) stop/go, speed limiter, emergency brake, pedestrian detection, travel assist, lane assist, emergency assist, multifunction sports steering wheel with LED and heated steering wheel, paddle shifters, multifunction camera, Discover Media navigation incl. streaming & internet (MP3, touchscreen, USB), cargo net, radio, heated windshield washer system, voice control, telephone interface, comfort with inductive charging, textile floor mats, traffic sign recognition, heated front seats)

## Brief expert findings

Documents submitted	At the time of the inspection, the vehicle registration certificate Part 2 (title) was available, but the vehicle registration certificate Part 1 (document) was not. (Copy)
VIN comparison	The vehicle identification number (VIN) was read from the vehicle and its conformity with the submitted documents was confirmed by the undersigned during the inspection.
Inspection	The inspection conditions were sufficient for the assessment of the vehicle. No lifting equipment or pit was available for inspecting the vehicle. Therefore, inspection of the vehicle's underside was only possible to a limited extent.
Test drive	No test drive/shunting maneuver was carried out during the inspection of the vehicle.
Engine function test	An engine test run was performed.

## Value reducing factors

No.	Component group	Description
1	Equipment	Tirefit filler - Expired - Replace
2	2nd wheel set	1 alloy rim - Scratch(es) - Loss in value
3	2nd wheel set	1 alloy rim - Scratched - Replace
4	Rear bumper	Rear bumper - Scratch(es) - Paint
5	Vehicle glazing	Windscreen (Steinschlag mit Rissbildung) - Stone chips - Replace

## Wear and tear

No.	Component group	Description
1	Bonnet	Bonnet - Stone chips - No deduction
2	Front bumper	Front bumper - Stone chips - No deduction
3	Roof	Roof - Stone chips - No deduction
4	Interior	Interior - Scratch(es) - No deduction

The vehicle shows signs of wear and tear commensurate with its age and use.

## Missing parts

### Description

2nd wheel set - Tyres - complete set



## Order/Scope of Order

An order was placed to prepare a sales report for the described vehicle. This report includes the following:

- Description of key vehicle information
- Documentation of equipment features  
*(Delivery by third-party service providers)*
- Documentation of damage, defects, missing parts
- Documentation of prior damage, unrepaired prior damage, repainting
- A brief visual or functional inspection of the equipment details, if possible.  
*(Functional testing of driver assistance systems is not included in the scope of services!)*
- a photographic documentation of the vehicle

## Basis for the order

This product is based on the guidelines for vehicle returns and valuations published by Alphabet Fleet GmbH. The expert makes the specific findings in each individual case objectively, within the framework of the prescribed standards, based on their own expertise.

The vehicle inspection takes place in a fully assembled, unassembled state.

Damage or defects that can only be detected during disassembly/diagnostic work or through further investigation remain within the realm of prognostic risk. An increased risk exists due to concealed defects caused by fraudulent misrepresentation and which were not identifiable by the expert.

Damage or defects resulting from normal use or wear and tear of the vehicle will be accepted in accordance with the applicable standard.

There was no explicit identification or monetary consideration of the expected features within the product.

Features which, in their nature and extent, slightly exceed normal use but do not constitute unacceptable damage, will be documented and indicated as signs of wear, if applicable.

Damage or defects that, according to the applicable standard, can no longer be attributed to normal use or wear and tear are listed under "Value Reducing Factors" in the product description.

Depending on the product specification, a monetary ID can be provided. If this takes place, the costs can be 100% or pro rata depending on the vehicle's age and mileage.

## Previous damages

No apparent prior damage that had been repaired could be found on the vehicle.

## Comments

- Die Unterbodenbesichtigung war nur ebenerdig und eingeschränkt möglich.
- Mehrkosten möglich .



Figure 1: Diagonal front (left)



Figure 2: Diagonal front (right)



Figure 3: Diagonal rear (left)



Figure 4: Diagonal rear (right)

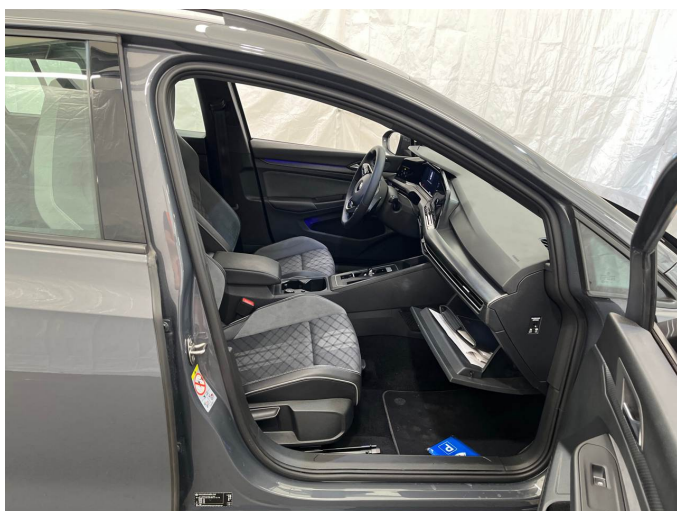


Figure 5: Interior - front



Figure 6: Interior - rear



Figure 7: Instrument cluster



Figure 8: Instrument panel



Figure 9: Interior 360° view



Figure 10: Cargo area

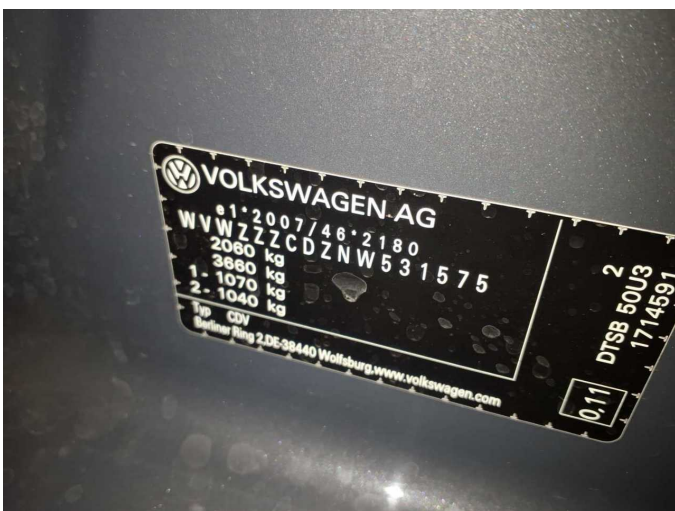


Figure 11: VIN



Figure 12: Mounted tyres



Figure 13: Documents

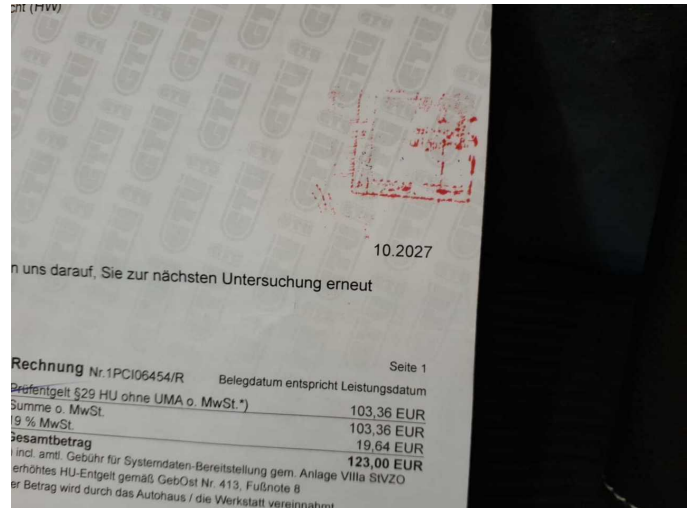


Figure 14: Documents

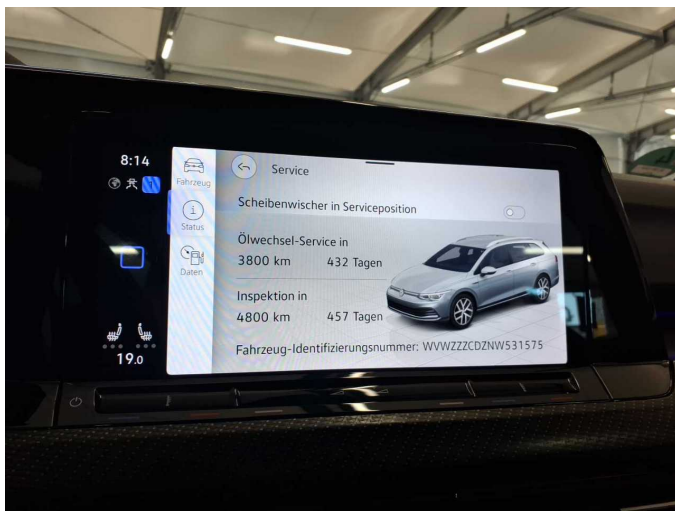


Figure 15: Documents

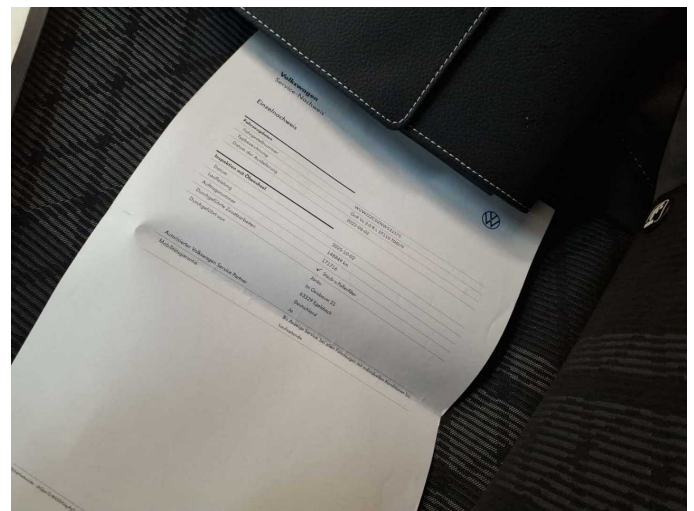


Figure 16: Documents



Figure 17: Additional tyres

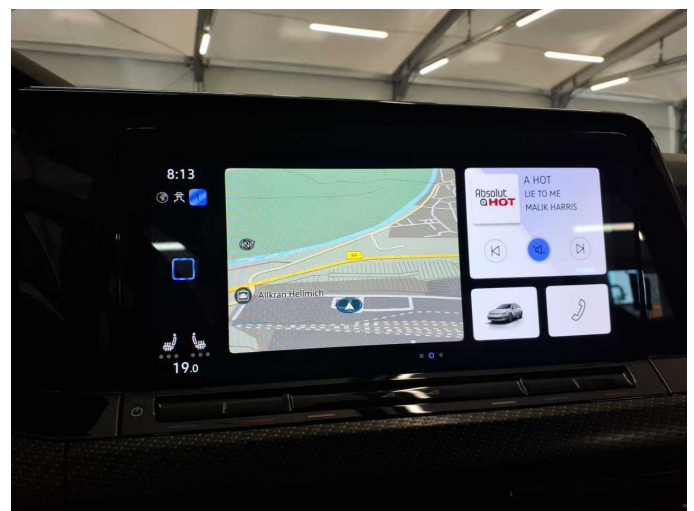


Figure 18: Navigation



Figure 19: Misc.



Figure 20: Misc.



Figure 21: Misc.



Figure 22: Misc.



Figure 23: Misc.



Figure 24: Misc.



Figure 25: Misc.



Figure 26: Misc.



Figure 27: Misc.



Figure 28: Misc.



Figure 29: Misc.



Figure 30: Misc.



Figure 31: Misc.



Figure 32: Misc.



Figure 33: Misc.



Figure 34: Misc.



Figure 35: Misc.



Damage 1: Equipment: Tirefit filler - Expired - Replace



**Damage 2:** 2nd wheel set: 1 alloy rim - Scratch(es) - Loss in value



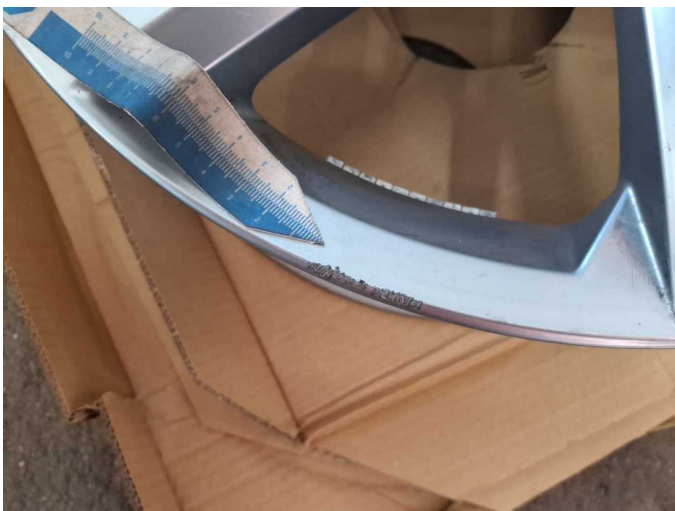
**Damage 2:** 2nd wheel set: 1 alloy rim - Scratch(es) - Loss in value



**Damage 3:** 2nd wheel set: 1 alloy rim - Scratched - Replace



**Damage 3:** 2nd wheel set: 1 alloy rim - Scratched - Replace



**Damage 3:** 2nd wheel set: 1 alloy rim - Scratched - Replace



**Damage 3:** 2nd wheel set: 1 alloy rim - Scratched - Replace



**Damage 3:** 2nd wheel set: 1 alloy rim - Scratched - Replace



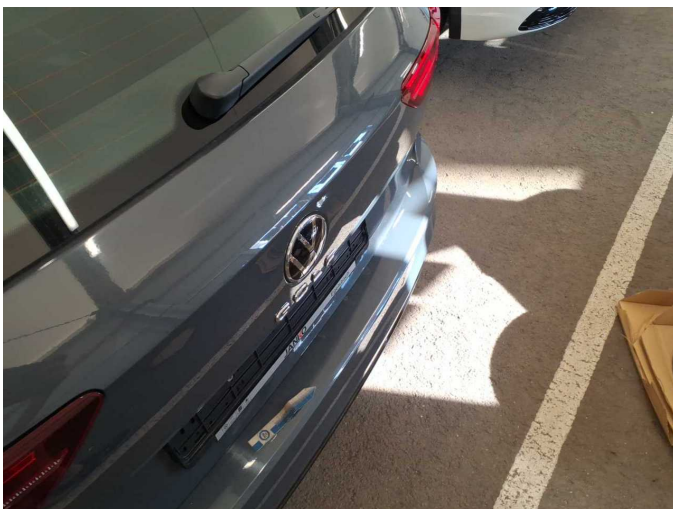
**Damage 3:** 2nd wheel set: 1 alloy rim - Scratched - Replace



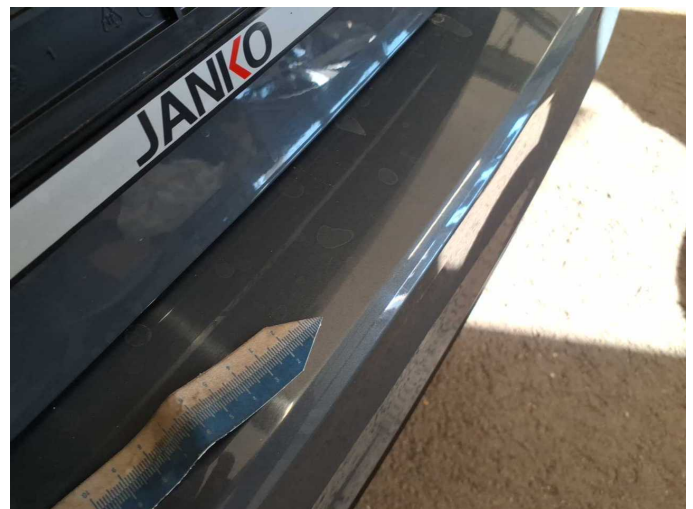
**Damage 4:** Rear bumper: Rear bumper - Scratch(es) - Paint



**Damage 4:** Rear bumper: Rear bumper - Scratch(es) - Paint



**Damage 4:** Rear bumper: Rear bumper - Scratch(es) - Paint



**Damage 4:** Rear bumper: Rear bumper - Scratch(es) - Paint



**Damage 5:** Vehicle glazing: Windscreen (Steinschlag mit Rissbildung) - Stone chips - Replace



**Damage 5:** Vehicle glazing: Windscreen (Steinschlag mit Rissbildung) - Stone chips - Replace



**Damage 5:** Vehicle glazing: Windscreen (Steinschlag mit Rissbildung) - Stone chips - Replace



**Damage 5:** Vehicle glazing: Windscreen (Steinschlag mit Rissbildung) - Stone chips - Replace



**Missing part 1:** 2nd wheel set: Tyres - complete set - Missing - Replace



**Missing part 1:** 2nd wheel set: Tyres - complete set - Missing - Replace



**Missing part 1:** 2nd wheel set: Tyres - complete set - Missing - Replace



# Wartungshistorie

(gemäß Auftraggeber Informationen)

Fahrgestellnummer: WVVZZZCDZNW531575  
Hersteller / Modell: VOLKSWAGEN VOLKSWAGEN Golf Variant 2.0 TDI SCR DSG R-Line

Datum	KM-Stand	Beschreibung
02.03.2026	169.568	Batterie ern; Luftfiltereinsatz ern; Systemtest/Eigendiagnose
12.02.2026	168.492	Bremse Sonstiges; Bremsklötze hinten; Bremsscheiben hinten
17.10.2025	150.828	Bremse Sonstiges; Bremsklötze vorne; Bremsscheiben vorne
15.10.2025	150.640	AU; Motoröl b. Wartung; Ölfilter ern; Regelwartungsdienst; Wartung Sonstiges
16.04.2025	117.898	Getriebeöl ern/prüfen; Kraftstofffilter ern; Motoröl b. Wartung; Ölfilter ern; Regelwartungsdienst; Systemtest/Eigendiagnose; Wartung Sonstiges
06.03.2025	1.111.866	Bremse Sonstiges; Bremsklötze vorne; Bremsscheiben vorne
30.09.2024	85.541	Bremsflüssigkeit ern; Bremsscheiben + Klötze h; Motoröl b. Wartung; Regelwartungsdienst; Systemtest/Eigendiagnose
10.09.2024	85.541	Bremsflüssigkeit ern; Bremsflüssigkeit ern; Bremsscheiben hinten; Bremsscheiben hinten; Motoröl b. Wartung; Motoröl b. Wartung; Regelwartungsdienst; Regelwartungsdienst; Systemtest/Eigendiagnose; Systemtest/Eigendiagnose
27.07.2023	57.926	Bremse Sonstiges; Bremsklötze vorne; Bremsscheiben vorne; Motoröl b. Wartung; Ölfilter ern; Regelwartungsdienst; Wartung Sonstiges
23.01.2023	30.361	Motoröl b. Wartung; Regelwartungsdienst