

Expertise

Protocol number: 45820335
Order No. / Reference: 26354001
Inspection date: 5 Jun 2026

Manufacturer: Skoda

Model: Octavia Combi 2.0 TDI DSG Style

VIN: TMBJJ8NX0PY101704



Vehicle details

Manufacturer / Type / Model / Equipment

Skoda Octavia Combi 2.0 TDI DSG Style

Vehicle Identification number TMBJJ8NX0PY101704

Mileage (Read) 87,193 km

First registration 5 Apr 2023

Number of holders 1

Power / Engine displacement 110 kw / 1,968 ccm

Fuel type / Cylinder Diesel / 4

Gearbox / Number of gears Automatic / 7

Type of drive Front drive

Type of vehicle Station wagon

Colour / colour code Blau Race Metallic

Doors / Seats 5 / 5

Upholstery type Cloth

Colour of upholstery Black-Anthracite



Vehicle details

Maintenance booklet / proof	digital proof / complete	Next maintenance in	1,500 km
Last service on / at	06/2025 at 59,529 km		
Key is / should be	3 / 3	FZG documents	ZB#2 (B) was available (copy), ZB#1 (S) was not available.
		Letter No.	GQ564402
Previous damage / Accident	None detectable	Repainting	None detectable
Inspection conditions	sufficient	Lifting equipment / pit	No
Test drive	Not performed	Engine function test	Performed
Manufacturer key number/ type code number	8004 / AWL 00291		
Emission standard	EURO6;WLTP;AP;PI/CI; M, N1 I	fine dust sticker	
Permitted total weight	1,990 kg	Empty weight	

Tyres

Mounted tyres

#	Tyre size	Type of tyre	Manufacturer	Tread depth
1)	205/55 R17 91V	Summer tyres on Light alloy	Continental	5mm / 5mm
2)	205/55 R17 91V	Summer tyres on Light alloy	Continental	6mm / 6mm

Additional tyres

#	Tyre size	Type of tyre	Manufacturer	Tread depth
1)	205/60 R16 96H	Winter tyres on Light alloy	Bridgestone	5mm / 5mm
2)	205/60 R16 96H	Winter tyres on Light alloy	Bridgestone	6mm / 6mm

Replacement

Typ	Tyre size	Type of tyre	Manufacturer	Tread depth
	Tirefit	Expiration date 01/2027		

Legend: Tread depth information for the left tire is listed first, for the right tire it is listed second on the axle in the direction of travel.



Equipment

Standard equipment

- Storage compartment in the luggage compartment with cargo element
- Airbag, driver's knee airbag
- Airbag, front side airbags
- Ambient lighting
- Traction control (ASR)
- Automatically dimming exterior mirror (driver's side)
- Exterior mirrors with memory function
- Heated windshield washer nozzles including 5l washer fluid reservoir
- Glasses compartment in the headliner
- AERO anodized roof rails
- Diesel particulate filter
- Tachometer
- Electronic parking brake including auto-hold function
- Electronic Stability Control (ESC)
- Electric windows front and rear, including anti-pinch protection and child safety lock
- Cruise control system
- Tinted windows
- Heated rear window
- Rear window wiper including windshield washer system
- ISOFIX preparations on the front passenger seat and the outer rear seats including top tether anchorage
- Climatronic air conditioning (2-zone)
- Headrests (5) front and rear height adjustable
- LED fog lights
- LED license plate lights
- LED headlights with LED daytime running lights
- Steering wheel: height and reach adjustable
- Manual headlight range adjustment
- Rear center armrest with pass-through option
- Engine drag torque control (MSR)
- Front and rear parking sensors
- Radio: Bolero music system with 10" display
- Radio accessories: 8 speakers
- Radio accessories: Digital radio reception DAB+
- Radio accessories: Voice control
- Tire pressure monitoring
- Wheels: 17" Rotare AERO alloy wheels
- Seat belts
- Seats: Heated front seats
- Seats: Height-adjustable driver and passenger seats
- Seats: Rear seat backrest split 60:40, foldable
- Speed limiter
- Lane change and parking assist as well as exit warning
- Telephone: Phonebox with inductive charging function (connection via external antenna)
- Immobiliser
- Storage compartments
- Airbag, driver and passenger
- Airbag, head airbags
- Airbag: Center airbag front
- Anti-lock braking system (ABS)
- Center section of the dashboard with fabric covering
- Electrically adjustable and heated exterior mirrors
- Electrically folding exterior mirrors
- Hill start assist
- Hydraulic brake assist (HBA)
- Grey headliner
- Decorative strip in silver square with ambient lighting
- Digital Cockpit Plus
- Third brake light
- Electronic transverse differential lock (XDS+)
- Driving profile selection
- Front radar assistant including city emergency braking function and pedestrian and cyclist detection
- Transmission: 7-speed dual-clutch transmission (DSG)
- Green tec: Start/stop system including brake energy recuperation
- Interior mirror automatically dimming
- Kessy, keyless entry and start-stop system
- Child safety lock for the rear doors and windows
- Removable boot cover
- Paint finish: Solid
- LED taillights in crystal glass look and animated turn signals
- Remote release of the rear seat backrests in the trunk
- Steering wheel: Leather steering wheel with multifunction buttons and paddle shifters.
- Front center armrest, including storage compartment
- Fatigue detection
- Upholstery: Cloth
- Radio accessories: 2 USB-C ports on the front
- Radio accessories: Bluetooth hands-free system
- Radio accessories: SmartLink
- Rain sensor and driving light assistant
- Tire mobility kit
- Electromechanical power steering
- Safety lights in the front side doors
- Seats: Electrically adjustable front seats with memory function
- SKODA Care Connect
- Lane keeping assistant (Lane Assist)
- 12V socket in the trunk
- Phone: Wireless SmartLink for Apple CarPlay
- Lashing eyes in the trunk
- Central locking including remote control integrated into the key and EASY Start



Extra equipment

- Swiveling trailer hitch including trailer stabilization and adapter
- Paint finish: Metallic
- Package: Infotainment package Business Columbus (Style, RS) DSG (Columbus navigation system - Infotainment Online (3-year term), online map updates: for navigation, traffic situation, petrol stations and parking space search - 3 USB charging ports - Head-Up Display - Adaptive Cruise Control (ACC) - Traveller Assist system: - Traffic sign recognition - Adaptive Lane Keeping Assist - Emergency and traffic jam assist - Capacitate steering wheel with Hands Off Detection)
- Package: Travel (DSG) WA1
- Seats: Manually adjustable Ergo seats PWE, PW4
- Heated windscreen
- Comfort opening with electric tailgate operation (The electric tailgate opens and closes at the touch of a button via remote control, a button in the driver's door, and by foot movement at the rear. The integrated comfort opening gives you all the options.)
- Package: Comfort (Style) (3-zone Climatronic - Sunset (dark tinted rear window and rear side windows) - acoustic glazing in the front side windows - heated front and outer rear seats - heated steering wheel)
- Package: Parking & Lighting (Style, Sportline) (Cornering lights in the fog lights - Headlight cleaning system - Matrix headlights - Reversing camera)
- Package: Transport (Combi) (Double-sided boot mat - Media holder - Tablet holder - Waste bin - 3rd vehicle key - Net program in the luggage compartment and cargo elements - Luggage net partition - Variable loading floor)

Brief expert findings

Documents submitted	At the time of the inspection, the vehicle registration certificate Part 2 (title) was available, but the vehicle registration certificate Part 1 (document) was not. (Copy)
VIN comparison	The vehicle identification number (VIN) was read from the vehicle and its conformity with the submitted documents was confirmed by the undersigned during the inspection.
Inspection	The inspection conditions were sufficient for the assessment of the vehicle. No lifting equipment or pit was available for inspecting the vehicle. Therefore, inspection of the vehicle's underside was only possible to a limited extent.
Test drive	No test drive/shunting maneuver was carried out during the inspection of the vehicle.
Engine function test	An engine test run was performed.

Value reducing factors

No.	Component group	Description
1	Door - rear right side	Door - Scratch(es) - Paint

Wear and tear

No.	Component group	Description
1	Vehicle glazing	Windscreen - Stone chips - No deduction
2	Bonnet	Bonnet - Stone chips - No deduction
3	Front bumper	Front bumper - Stone chips - No deduction
4	Rear bumper	Rear bumper - Scratch(es) - No deduction

The vehicle shows signs of wear and tear commensurate with its age and use.



Order/Scope of Order

An order was placed to prepare a sales report for the described vehicle. This report includes the following:

- Description of key vehicle information
- Documentation of equipment features
(Delivery by third-party service providers)
- Documentation of damage, defects, missing parts
- Documentation of prior damage, unrepaired prior damage, repainting
- A brief visual or functional inspection of the equipment details, if possible.
(Functional testing of driver assistance systems is not included in the scope of services!)
- a photographic documentation of the vehicle

Basis for the order

This product is based on the guidelines for vehicle returns and valuations published by Alphabet Fleet GmbH. The expert makes the specific findings in each individual case objectively, within the framework of the prescribed standards, based on their own expertise.

The vehicle inspection takes place in a fully assembled, unassembled state.

Damage or defects that can only be detected during disassembly/diagnostic work or through further investigation remain within the realm of prognostic risk. An increased risk exists due to concealed defects caused by fraudulent misrepresentation and which were not identifiable by the expert.

Damage or defects resulting from normal use or wear and tear of the vehicle will be accepted in accordance with the applicable standard.

There was no explicit identification or monetary consideration of the expected features within the product.

Features which, in their nature and extent, slightly exceed normal use but do not constitute unacceptable damage, will be documented and indicated as signs of wear, if applicable.

Damage or defects that, according to the applicable standard, can no longer be attributed to normal use or wear and tear are listed under "Value Reducing Factors" in the product description.

Depending on the product specification, a monetary ID can be provided. If this takes place, the costs can be 100% or pro rata depending on the vehicle's age and mileage.

Previous damages

No apparent prior damage that had been repaired could be found on the vehicle.

Comments

- Der beiliegende Winterradsatz Sommerradsatz Reifensatz ist kein Bestandteil des Auslieferungsumfangs.



Figure 1: Diagonal front (left)



Figure 2: Diagonal front (right)



Figure 3: Diagonal rear (left)



Figure 4: Diagonal rear (right)



Figure 5: Interior - front



Figure 6: Interior - rear



Figure 7: Instrument cluster



Figure 8: Instrument panel



Figure 9: Interior 360° view



Figure 10: Cargo area

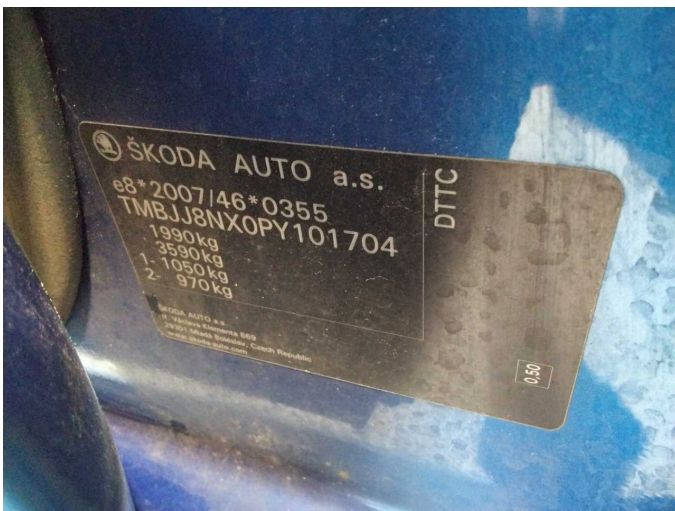


Figure 11: VIN



Figure 12: Mounted tyres

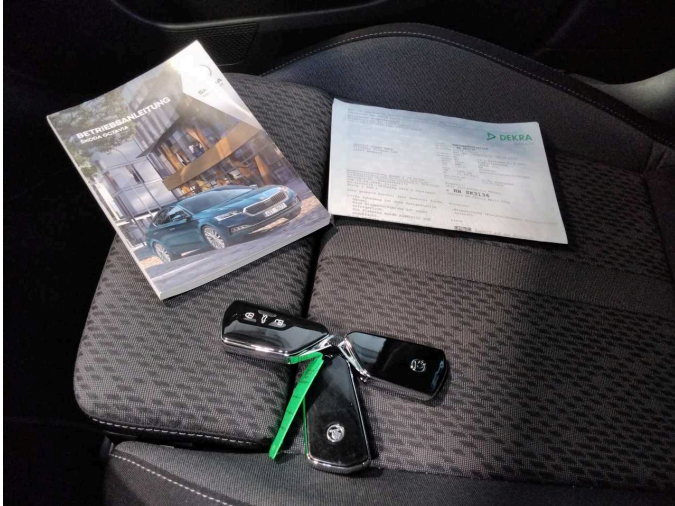


Figure 13: Documents



Figure 14: Documents



Figure 15: Additional tyres



Figure 16: Additional tyres

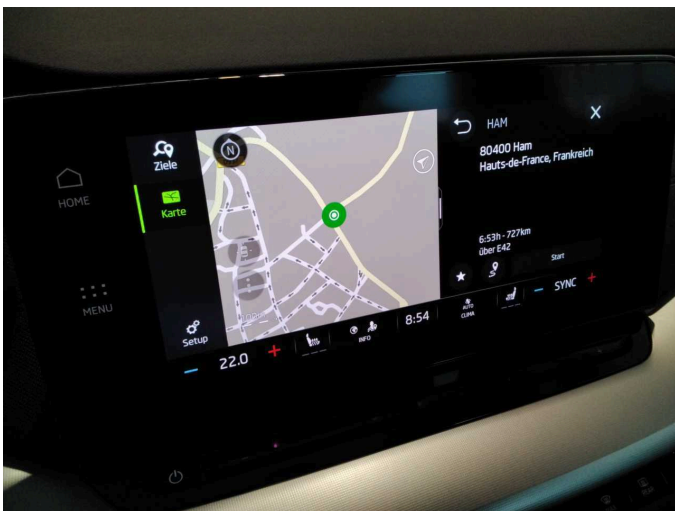


Figure 17: Navigation



Figure 18: Misc.



Figure 19: Misc.



Figure 20: Misc.



Figure 21: Misc.

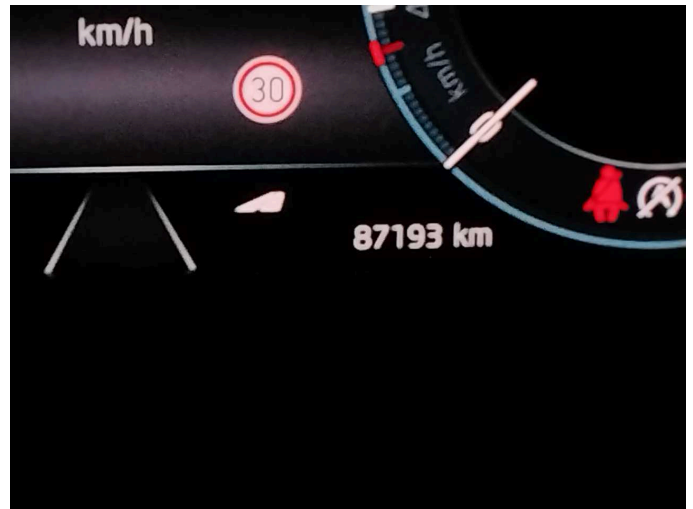


Figure 22: Misc.



Figure 23: Misc.



Figure 24: Misc.



Figure 25: Misc.



Figure 26: Misc.



Figure 27: Misc.

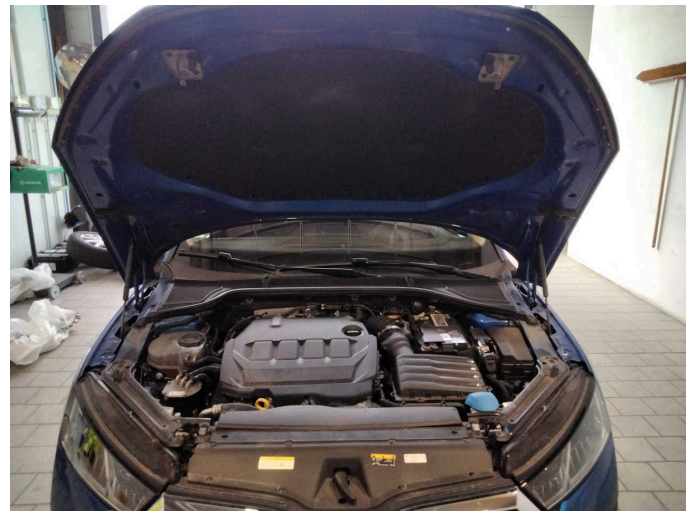


Figure 28: Misc.



Figure 29: Misc.



Figure 30: Misc.



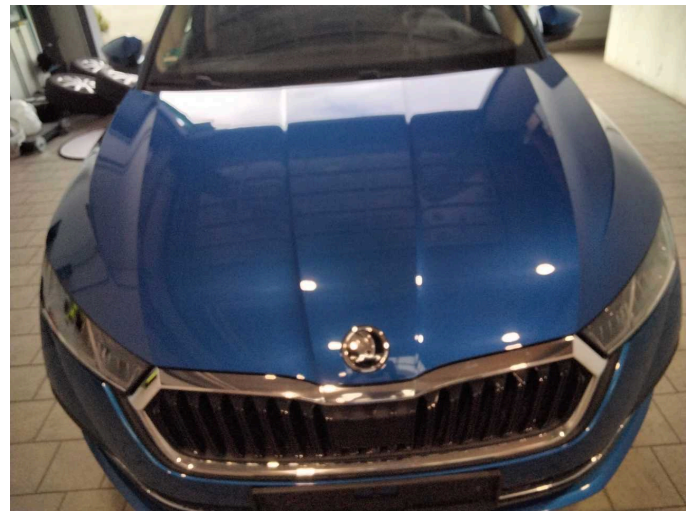
Damage 1: Door - rear right side: Door - Scratch(es) - Paint



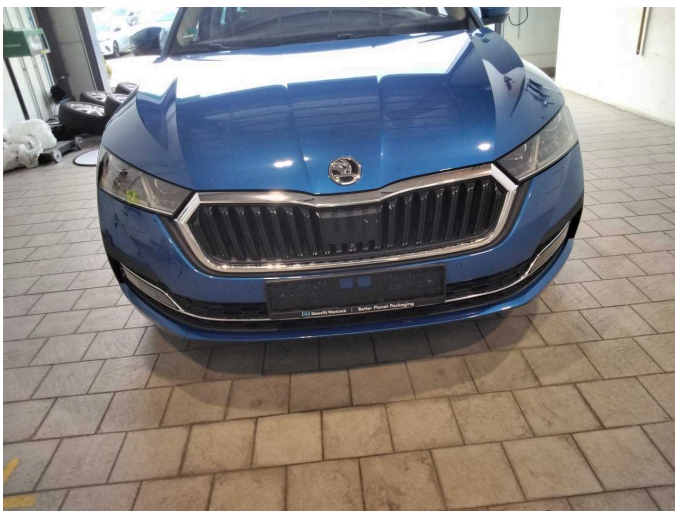
Damage 1: Door - rear right side: Door - Scratch(es) - Paint



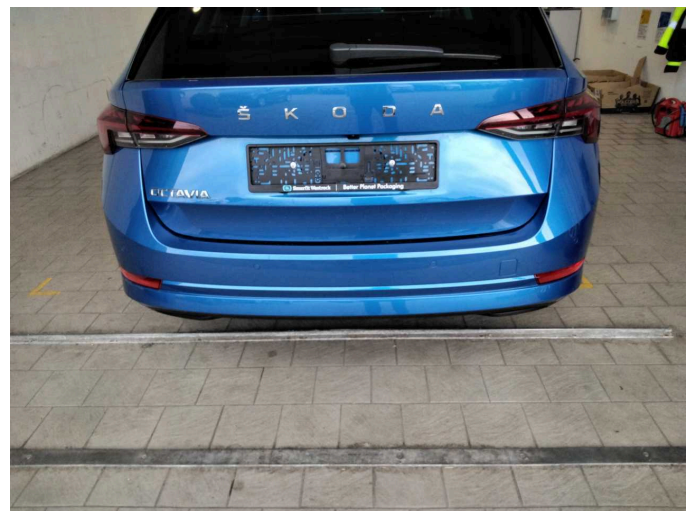
Wear and tear 1: Vehicle glazing: Windscreen - Stone chips - No deduction



Wear and tear 2: Bonnet: Bonnet - Stone chips - No deduction



Wear and tear 3: Front bumper: Front bumper - Stone chips - No deduction



Wear and tear 4: Rear bumper: Rear bumper - Scratch(es) - No deduction



Wartungshistorie

(gemäß Auftraggeber Informationen)

Fahrgestellnummer: TMBJJ8NX0PY101704

Hersteller / Modell: SKODA SKODA Octavia Combi 2.0 TDI DSG Style

Datum	KM-Stand	Beschreibung
09.04.2026	84.827	AU; Wartung Sonstiges
23.06.2025	59.529	Bremsflüssigkeit; Bremsflüssigkeit ern; Motoröl b. Wartung; Ölfilter ern; Regelwartungsdienst; Wartung Sonstiges
26.03.2024	30.286	Motoröl b. Wartung; Ölfilter ern; Regelwartungsdienst; Wartung Sonstiges