

Expertise

Protocol number: 46144442
Order No. / Reference: 26513078
Inspection date: 24 Jun 2026

Manufacturer: Volvo

Model: XC40 B3 B DKG Core

VIN: YV1XZK7V6P2040853



Vehicle details

Manufacturer / Type / Model / Equipment

Volvo XC40 B3 B DKG Core

Vehicle Identification number YV1XZK7V6P2040853

Mileage (Read) 124,330 km

First registration 21 Apr 2023

Number of holders 1

Next periodical technical inspection 05/2028
(Report on hand)

Power / Engine displacement 120 kw / 1,969 ccm

Fuel type / Cylinder Hybrid Petrol / E / 4

Gearbox / Number of gears Automatic / 7

Type of drive Front drive

Type of vehicle SUV

Colour / colour code Crystal Weiß-Perleffekt

Doors / Seats 5 / 5

Upholstery type Cloth

Colour of upholstery Grey-Black



Vehicle details

Maintenance booklet / proof	digital proof / complete	Next maintenance in	304 Tag(e)
Last service on / at	05/2026 at 119,043 km		
Key is / should be	2 / 2	FZG documents	ZB#2 (B) was available (copy), ZB#1 (S) was not available.
		Letter No.	GQ214809
Previous damage / Accident	Detectable	Repainting	Detectable
Inspection conditions	sufficient	Lifting equipment / pit	yes
Test drive	Not performed	Engine function test	Performed
Manufacturer key number/ type code number	9101 / BUO 00004		
Emission standard	EURO6;WLTP;AP;PI/CI; M, N1 I	fine dust sticker	
Permitted total weight	2,220 kg	Empty weight	

Tyres

Mounted tyres

#	Tyre size	Type of tyre	Manufacturer	Tread depth
1)	235/50 R19 103V	Summer tyres on Light alloy	Continental	4mm / 4mm
2)	235/50 R19 103V	Summer tyres on Light alloy	Continental	4mm / 4mm

Additional tyres

#	Tyre size	Type of tyre	Manufacturer	Tread depth
1)	235/60 R17 102H	Winter tyres on Light alloy	Bridgestone	5mm / 5mm
2)	235/60 R17 102H	Winter tyres on Light alloy	Continental	5mm / 5mm

Replacement

Typ	Tyre size	Type of tyre	Manufacturer	Tread depth
	Tirefit	Expiration date 05/2027		

Legend: Tread depth information for the left tire is listed first, for the right tire it is listed second on the axle in the direction of travel.

TÜV SÜD Auto Partner GmbH
Wiesenring 2
04159 Leipzig

Inspection location
Hartmann Compound Professionals
Arnoldschacht 9-11
44894 Bochum



Equipment



Standard equipment

- Integrated, removable waste bin in the center console
- Passenger side airbag can be deactivated
- Active safety belts with belt tensioners
- Android infotainment system
- Electrically folding exterior mirrors
- Heated exterior mirrors and rear window
- Hill descent control
- LED turn signals integrated into the exterior mirrors
- City Safety
- Aluminum roof rails (integrated)
- Second generation digital instrumentation
- Pass-through hatch behind the center armrest in the rear
- Electronic differential lock
- Electronic stability control
- Foldable cargo floor with fastening system for carrier bags in the luggage compartment
- Front grille in waterfall design in high-gloss black with chrome surround
- Cup holders (two) in the center console
- Hooks for carrier bags in the luggage compartment
- rear window wiper
- Interior lighting
- ISOFIX mounting for the outer rear seats
- Keyless Start
- Automatic climate control with 2-zone temperature control
- Rear headrests fixed
- Front headrests
- Steering wheel adjustable for height and reach
- Steering wheel: Sports steering wheel
- Rear center armrest with two integrated cup holders
- Emergency brake lights
- Otto particulate filter
- Electric parking brake
- Radio: High Performance Sound audio system
- Radio accessories: Two USB-C ports on the back of the center console
- Tire pressure monitoring system
- Wheels: Tire sealant
- Safety Assistance
- Side window trim in black (bottom)
- Seats: Passenger seat adjustable in height and length
- Seats: Driver's seat height and length adjustable including tilt adjustment
- Seats: Whiplash Protection System WHIPS
- Start/Stop technology
- 12-volt socket at the front
- Textile floor mats front and rear
- Glazing: Colored glazing
- Preparation for Trailer Stability Assist (TSA)
- Immobiliser
- ABS - Anti-lock Braking System
- Airbags
- Ambient lighting
- Fold-out (bag) hook on the glove compartment
- Electrically adjustable exterior mirrors
- Exterior mirror caps in car color
- Hill start assist
- third brake light
- Roof edge spoiler
- Digital services including Google Maps navigation system
- Tachometer
- Rear parking assist with automatic braking intervention (rear)
- Chassis: Dynamically designed
- Electric windows front and rear
- Automatic emergency braking
- Luggage compartment partition net
- Transmission: 7-speed dual-clutch transmission
- Front seat belt height adjustment
- Automatic tailgate
- Interior and exterior mirrors automatically dimming
- Intelligent driver information system
- Keyless Drive
- Child safety lock for the rear doors (electric)
- Comfort opening/closing of the side windows via radio remote control
- LED headlights "Thor's Hammer"
- Steering wheel: Multifunction buttons on the steering wheel
- Illuminated makeup mirror for driver and front passenger
- Front center armrest with integrated storage compartment
- Optical underride protection front and rear in high-gloss silver
- Upholstery: Textile (Rivel Chine)
- Radio accessories: Two USB-C ports in the front center console
- Rain sensor
- Run-off Road Protection
- Rear seats can be folded down in a 40/60 split or completely.
- Speed-sensitive power steering
- Seats: Adjustable (manual) leg rest for driver and front passenger seats
- Seats: Lumbar support (4-way electrically adjustable) for driver and front passenger seats
- 12-volt power outlet in the luggage compartment
- Phone: Inductive smartphone charging system
- First aid kit and warning triangle
- Lashing eyes (four) in the luggage compartment
- Warning tone/indicator when seat belts are not fastened (for all seats)



- Central locking system with two remote controls and integrated emergency keys

Extra equipment

- Towbar (semi-electric)
- Package: Driver Assistance Package (Mild Hybrid) (Adaptive Cruise Control - Emergency Stop Assist - automatic emergency braking system if warnings are ignored due to the driver's failure to steer, brake, or accelerate, including activation of the hazard warning lights and automatic braking to a standstill - Pilot Assist - Blind Spot Information System - Blind Spot Assist - Lane Change Warning including steering intervention - Cross Traffic Alert - cross traffic warning with braking intervention - Rear Collision Mitigation)
- Paint finish: Pearl effect paint
- Package: Parking Assistance Package (Mild Hybrid) (Front and rear parking aid with automatic braking intervention (rear) - reversing camera)
- Package: Winter Package (front seat heating - steering wheel heating)
- Wheels: 19" alloy wheels, 5-Y-spoke design, diamond cut/matt graphite look (7.5 Jx 19" with all-season tires 235/50 R19, tire category A)

Brief expert findings

Documents submitted	At the time of the inspection, the vehicle registration certificate Part 2 (title) was available, but the vehicle registration certificate Part 1 (document) was not. (Copy)
VIN comparison	The vehicle identification number (VIN) was read from the vehicle and its conformity with the submitted documents was confirmed by the undersigned during the inspection.
Inspection	The inspection conditions were sufficient for the assessment of the vehicle. Lifting equipment and/or a pit were available for examining the vehicle.
Test drive	No test drive/shunting maneuver was carried out during the inspection of the vehicle.
Engine function test	An engine test run was performed.

Value reducing factors

No.	Component group	Description
1	Side panel - rear right side	Sill - Scratch(es) - Smart repair
2	Rear bumper	Rear bumper - Scratch(es) - Smart repair
3	Bonnet	Insulation lining - Missing - Replace

Wear and tear

No.	Component group	Description
1	Front bumper	Front bumper - Stone chips - No deduction
2	Vehicle glazing	Windscreen - Stone chips - No deduction

The vehicle shows signs of wear and tear commensurate with its age and use.

Previous damages

No.	Previous damage	Extent of damage (Net)
1	Side right, Professionally repaired, Invoice of repair done	Non-existent

Repainting

No.	Repainting
1	Mudguard - right side, Door - rear right side, Door - front right side, Professionally carried out, Invoice of repair done



Order/Scope of Order

An order was placed to prepare a sales report for the described vehicle. This report includes the following:

- Description of key vehicle information
- Documentation of equipment features
(Delivery by third-party service providers)
- Documentation of damage, defects, missing parts
- Documentation of prior damage, unrepaired prior damage, repainting
- A brief visual or functional inspection of the equipment details, if possible.
(Functional testing of driver assistance systems is not included in the scope of services!)
- a photographic documentation of the vehicle

Basis for the order

This product is based on the guidelines for vehicle returns and valuations published by Alphabet Fleet GmbH. The expert makes the specific findings in each individual case objectively, within the framework of the prescribed standards, based on their own expertise.

The vehicle inspection takes place in a fully assembled, unassembled state.

Damage or defects that can only be detected during disassembly/diagnostic work or through further investigation remain within the realm of prognostic risk. An increased risk exists due to concealed defects caused by fraudulent misrepresentation and which were not identifiable by the expert.

Damage or defects resulting from normal use or wear and tear of the vehicle will be accepted in accordance with the applicable standard.

There was no explicit identification or monetary consideration of the expected features within the product.

Features which, in their nature and extent, slightly exceed normal use but do not constitute unacceptable damage, will be documented and indicated as signs of wear, if applicable.

Damage or defects that, according to the applicable standard, can no longer be attributed to normal use or wear and tear are listed under "Value Reducing Factors" in the product description.

Depending on the product specification, a monetary ID can be provided. If this takes place, the costs can be 100% d or pro rata depending on the vehicle's age and mileage.

Previous damages

Professionally repaired previous damages were found at the vehicle.

Comments

- Winterradsatz ist kein Bestandteil des Auslieferungsumfangs.



Figure 1: Diagonal front (left)



Figure 2: Diagonal front (right)



Figure 3: Diagonal rear (left)



Figure 4: Diagonal rear (right)



Figure 5: Interior - front



Figure 6: Interior - rear



Figure 7: Instrument cluster



Figure 8: Instrument panel



Figure 9: Interior 360° view



Figure 10: Cargo area



Figure 11: VIN



Figure 12: Mounted tyres



Figure 13: Documents



Figure 14: Documents

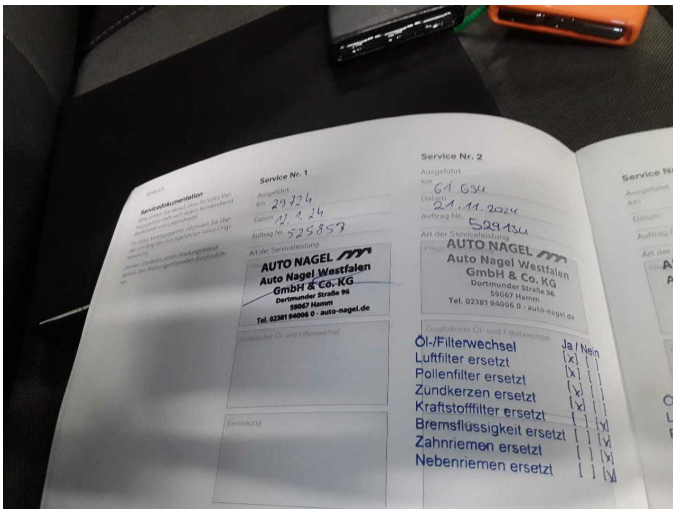


Figure 15: Documents

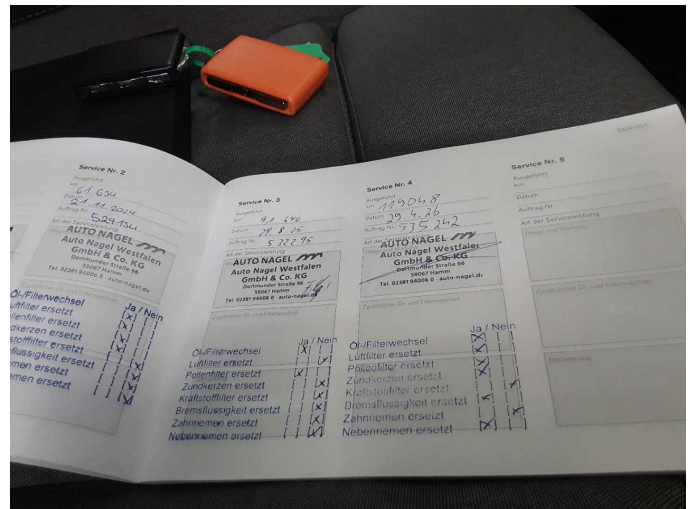


Figure 16: Documents



Figure 17: Additional tyres

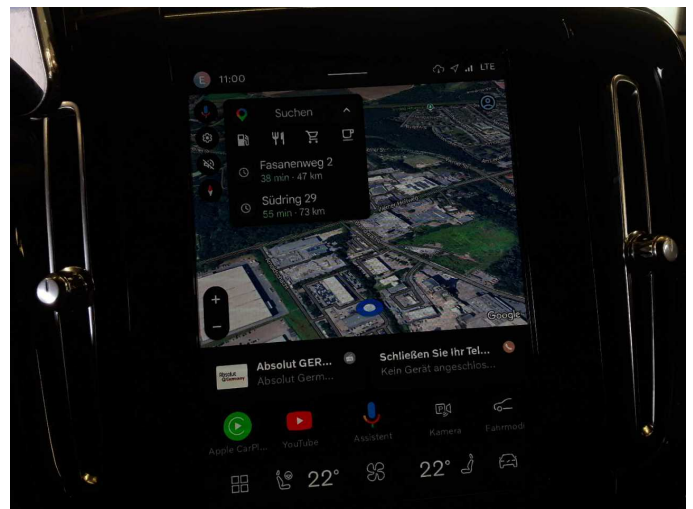


Figure 18: Navigation



Figure 19: Misc.



Figure 20: Misc.



Figure 21: Misc.



Figure 22: Misc.



Figure 23: Misc.

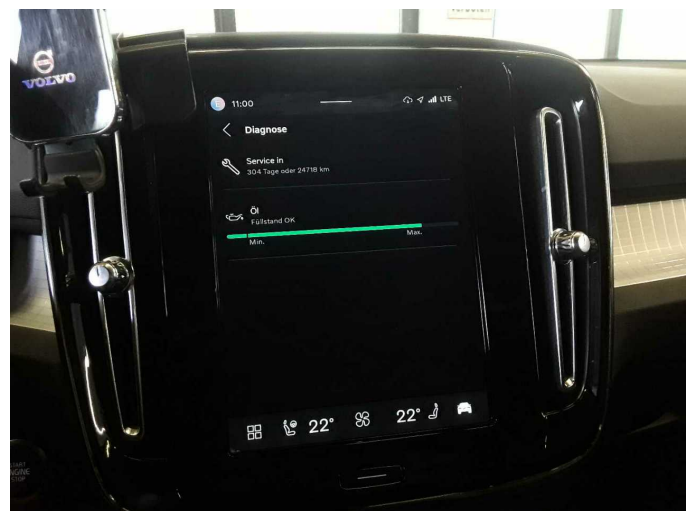


Figure 24: Misc.



Figure 25: Misc.



Figure 26: Misc.



Figure 27: Misc.



Figure 28: Misc.



Figure 29: Misc.



Figure 30: Misc.



Damage 1: Side panel - rear right side: Sill - Scratch(es) - Smart repair



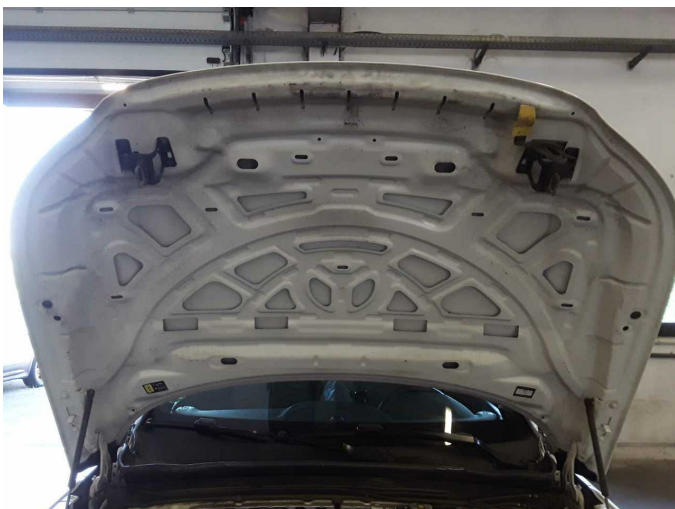
Damage 1: Side panel - rear right side: Sill - Scratch(es) - Smart repair



Damage 2: Rear bumper: Rear bumper - Scratch(es) - Smart repair



Damage 2: Rear bumper: Rear bumper - Scratch(es) - Smart repair



Damage 3: Bonnet: Insulation lining - Missing - Replace



Wear and tear 1: Front bumper: Front bumper - Stone chips - No deduction



Wear and tear 1: Front bumper: Front bumper - Stone chips - No deduction



Wear and tear 2: Vehicle glazing: Windscreen - Stone chips - No deduction



Wear and tear 2: Vehicle glazing: Windscreen - Stone chips - No deduction



Repainting 1: Mudguard - right side, Door - rear right side, Door - front right side



Repainting 1: Mudguard - right side, Door - rear right side, Door - front right side



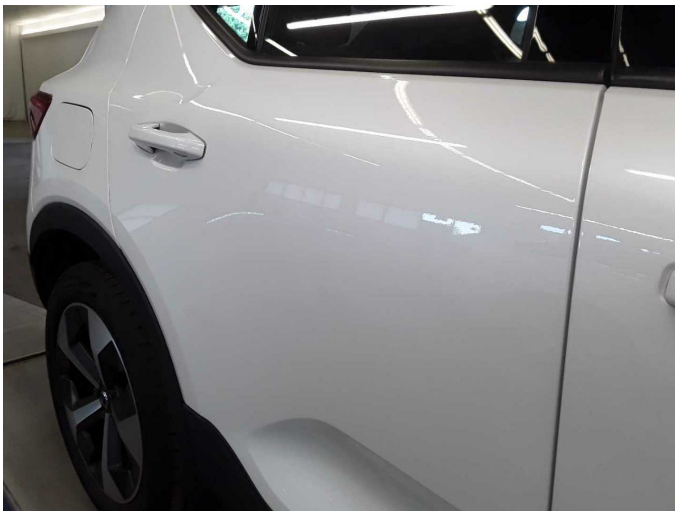
Repainting 1: Mudguard - right side, Door - rear right side, Door - front right side



Repainting 1: Mudguard - right side, Door - rear right side, Door - front right side



Repainting 1: Mudguard - right side, Door - rear right side, Door - front right side



Repainting 1: Mudguard - right side, Door - rear right side, Door - front right side



Wartungshistorie

(gemäß Auftraggeber Informationen)

Fahrgestellnummer: YV1XZK7V6P2040853
Hersteller / Modell: VOLVO VOLVO XC40 B3 B DKG Core

Datum	KM-Stand	Beschreibung
08.05.2026	119.043	Bremsflüssigkeit; Bremsflüssigkeit ern; Getriebeöl ern/prüfen; Keilrippenriemen; Luftfiltereinsatz ern; Motoröl b. Wartung; Ölfilter ern; Regelwartungsdienst; Reparatur Sonstiges; Reparatur Sonstiges; Systemtest/Eigendiagnose; Wartung Sonstiges; Zündkerzen ern
29.08.2025	91.640	Motoröl b. Wartung; Ölfilter ern; Regelwartungsdienst; Wartung Sonstiges
27.11.2024	61.634	Getriebeöl ern/prüfen; Luftfiltereinsatz ern; Motoröl b. Wartung; Ölfilter ern; Regelwartungsdienst; Reparatur Sonstiges; Wartung Sonstiges; Zündkerzen ern
12.01.2024	29.729	Motoröl b. Wartung; Ölfilter ern; Regelwartungsdienst; Wartung Sonstiges