

## Expertise

Protocol number: 46327297  
Order No. / Reference: MW3058797  
Inspection date: 13 Nov 2025

Manufacturer: Kia

Model: Niro 1.6 GDI PHEV 2WD OPF Aut. Spirit

VIN: KNACR81FGS5192414



### Vehicle details

#### Manufacturer / Type / Model / Equipment

Kia Niro 1.6 GDI PHEV 2WD OPF Aut. Spirit

**Vehicle Identification number** KNACR81FGS5192414

**Mileage (Read)** 18,414 km

**First registration** 9 Aug 2024

**Number of holders** 1

**Power / Engine displacement** 69 kw / 1,580 ccm

**Fuel type / Cylinder** Hybr.B/E ext.auf1 / 4

**Gearbox / Number of gears** Automatic / 6

**Type of drive** Front drive

**Type of vehicle** SUV

**Colour / colour code** Interstellar Grau Metallic

**Doors / Seats** 5 / 5

**Upholstery type** Artificial leather

**Colour of upholstery** Black-Anthracite

**readiness to drive** Not roadworthy /  
moveable



Vehicle details			
<b>Maintenance booklet / proof</b>	digital proof / complete	<b>Next maintenance in</b>	7 Monat(e)
<b>Last service on / at</b>	05/2025 at 13,722 km		
<b>Key is / should be</b>	2 / 2	<b>FZG documents</b>	ZB#2 (B) was available (copy), ZB#1 (S) was not available.
		<b>Letter No.</b>	HG481878
<b>Previous damage / Accident</b>	None detectable	<b>Repainting</b>	None detectable
<b>Inspection conditions</b>	sufficient	<b>Lifting equipment / pit</b>	yes
<b>Test drive</b>	Not possible to drive	<b>Engine function test</b>	Performed
<b>readiness to drive</b>	Not roadworthy / moveable		
<b>Manufacturer key number/ type code number</b>	2233 / ABW 00002		
<b>Emission standard</b>	EURO6;WLTP;EA;PI/CI;M, N1, N2	<b>fine dust sticker</b>	
<b>Permitted total weight</b>	2,060 kg	<b>Empty weight</b>	

## Tyres

Mounted tyres				
#	Tyre size	Type of tyre	Manufacturer	Tread depth
1)	225/40 R18 95V	Summer tyres on Light alloy	Continental	5mm / 5mm
2)	225/40 R18 95V	Summer tyres on Light alloy	Continental	5mm / 5mm
Additional tyres				
#	Tyre size	Type of tyre	Manufacturer	Tread depth
1)	205/60 R16 92H	Winter tyres on Light alloy	Continental	7mm / 7mm
2)	205/60 R16 92H	Winter tyres on Light alloy	Continental	7mm / 7mm
Replacement				
Typ	Tyre size	Type of tyre	Manufacturer	Tread depth
	Tirefit	Expiration date 03/2029		

**Legend: Tread depth information for the left tire is listed first, for the right tire it is listed second on the axle in the direction of travel.**

TÜV SÜD Auto Partner GmbH  
Wiesenring 2  
04159 Leipzig

Inspection location  
Hartmann Fleet Professionals GmbH  
Industriestraße 11  
36272 Niederaula



## Equipment



## Standard equipment

- Airbag: 1 knee airbag (driver's side)
- Airbag: 2 side airbags
- Airbag: Center airbag
- Ambient lighting in the dashboard
- Highway assistant
- Electrically heated exterior mirrors
- Exterior mirrors with integrated LED turn signals
- On-board computer
- Decorative inlays, marble look (grey)
- Drive Mode Select
- twilight sensor
- Electric tailgate, sensor-controlled
- Electric windows, front and rear
- High Beam Assist (HBA)
- Front collision warning system, extended with turning function
- Gear selector rotary switch (shift by wire)
- Luggage net loops in the luggage compartment
- Luggage compartment lighting
- Cruise control, adaptive and navigation-based
- Back window, heater
- Inductive charging station for smartphones
- Integrated panoramic display with fully digital instrument cluster
- Insulating glazing for the windshield
- Child safety locks on the rear doors
- Automatic air conditioning
- Steering wheel in high-quality imitation leather
- Steering wheel: Heated multifunction steering wheel
- Armrest - centre, rear
- Driver Alert System (DAW)
- Emergency call service eCall
- Gasoline particulate filter (GPF)
- Rear parking sensors
- Upholstery: Leatherette
- Radio accessories: Bluetooth hands-free system with voice recognition
- Radio accessories: Smartphone interface Apple CarPlay and Android Auto
- Rain sensor
- Wheels: 16" alloy wheels
- Rear view camera
- Rear seat backrest asymmetrically split (60:40), foldable
- Seat belts
- Seat: Passenger seat with lumbar support, electrically adjustable
- Seat: Front seat heating
- Smart key and start button
- Lane Follow Assist (LFA)
- SUV design elements
- Phone accessories: Inductive charging station for smartphones
- USB charging port in the center console
- Glazing: Privacy glazing
- Airbag: 2 front airbags
- Airbag: 2 curtain airbags
- Aluminum sports pedals
- Anti-lock braking system (ABS)
- Electrically folding exterior mirrors
- Electrically adjustable exterior mirrors
- Hill start assist
- Front overhead console with reading lights
- Third brake light with LED
- Dual LED headlights
- Door sills with aluminum
- Electronic Stability Program (ESP) with TCS (Traction Control)
- Forward Collision Warning (FCA) with brake intervention and pedestrian and cyclist detection
- Floor mats
- Luggage net
- luggage compartment cover
- Speed limiter
- 6-speed dual-clutch transmission
- rear window wiper
- Interior rearview mirror self-dimming (electrochromatic)
- Intelligent speed assistant
- ISOFIX mounts on outer rear seats
- Kia map navigation with a 26 cm (10.25 inch) screen diagonal
- Headrests on all seats are height-adjustable.
- Steering wheel: Steering wheel adjustable for height and reach
- front center armrest
- LED fog lights
- Kia Connect online services
- Electronic parking brake with auto-hold function
- Front parking sensors
- Cross-traffic alert
- Radio accessories: Digital radio reception (DAB/DAB+)
- Radio accessories: Harman/Kardon premium sound system
- Radio accessories: USB port
- Tire pressure monitoring system (TPMS)
- Wheels: Tire repair kit
- LED taillights
- Power steering
- Seat: Passenger seat height adjustable
- Seat: Driver's seat height adjustable
- Seat: Driver's seat with lumbar support, electrically adjustable
- Sun visors with illuminated makeup mirrors
- Lane keeping assist with visual/acoustic warning signal
- LED daytime running lights
- Blind spot assist with steering and braking intervention
- USB charging ports on the sides of the front seats (one each)
- Electronic immobilizer
- Central locking with remote control



- thermal insulation glazing
- Auxiliary heater, electric

**Extra equipment**

- Detachable towbar (including installation)
- Charging cable Type 2 to Type 2 plug
- Paint finish: Metallic paint

**Brief expert findings**

Documents submitted	At the time of the inspection, the vehicle registration certificate Part 2 (title) was available, but the vehicle registration certificate Part 1 (document) was not. (Copy)
VIN comparison	The vehicle identification number (VIN) was read from the vehicle and its conformity with the submitted documents was confirmed by the undersigned during the inspection.
Inspection	The inspection conditions were sufficient for the assessment of the vehicle. Lifting equipment and/or a pit were available for examining the vehicle.
Test drive	It was not possible to drive the vehicle at the time of the inspection.
Engine function test	An engine test run was performed. This is due to the following reason.: Reifen beschädigt
readiness to drive	The vehicle was not capable of driving under its own power at the time of inspection, but can be moved on its own axle with the aid of assistance.

**Value reducing factors**

No.	Component group	Description
1	Wheel / tyres	Tyre - rear right side (nicht fahrbereit) - Porous / cracked - Replace
2	Wheel / tyres	Alloy rim - rear right side - Scratched - Loss in value

**Wear and tear**

No.	Component group	Description
1	Vehicle glazing	Windscreen - Stone chips - No deduction
2	Door - rear right side	Door - Scratch(es) - No deduction
3	Front bumper	Front bumper - Stone chips - No deduction
4	Rear bumper	Rear bumper - Scratch(es) - No deduction

The vehicle shows signs of wear and tear commensurate with its age and use.

**Order/Scope of Order**

An order was placed to prepare a sales report for the described vehicle. This report includes the following:

- Description of key vehicle information
- Documentation of equipment features  
*(Delivery by third-party service providers)*
- Documentation of damage, defects, missing parts
- Documentation of prior damage, unrepaired prior damage, repainting
- A brief visual or functional inspection of the equipment details, if possible.  
*(Functional testing of driver assistance systems is not included in the scope of services!)*
- a photographic documentation of the vehicle



## Basis for the order

This product is based on the guidelines for vehicle returns and valuations published by Alphabet Fleet GmbH. The expert makes the specific findings in each individual case objectively, within the framework of the prescribed standards, based on their own expertise.

The vehicle inspection takes place in a fully assembled, unassembled state.

Damage or defects that can only be detected during disassembly/diagnostic work or through further investigation remain within the realm of prognostic risk. An increased risk exists due to concealed defects caused by fraudulent misrepresentation and which were not identifiable by the expert.

Damage or defects resulting from normal use or wear and tear of the vehicle will be accepted in accordance with the applicable standard.

There was no explicit identification or monetary consideration of the expected features within the product.

Features which, in their nature and extent, slightly exceed normal use but do not constitute unacceptable damage, will be documented and indicated as signs of wear, if applicable.

Damage or defects that, according to the applicable standard, can no longer be attributed to normal use or wear and tear are listed under "Value Reducing Factors" in the product description.

Depending on the product specification, a monetary ID can be provided. If this takes place, the costs can be 100% d or pro rata depending on the vehicle's age and mileage.

## Previous damages

No apparent prior damage that had been repaired could be found on the vehicle.

## Comments

Der beiliegende Winterradsatz ist nicht Bestandteil der vorliegenden Fahrzeugausstattung.



Figure 1: Diagonal front (left)



Figure 2: Diagonal front (right)



Figure 3: Diagonal rear (left)



Figure 4: Diagonal rear (right)



Figure 5: Interior - front



Figure 6: Interior - rear

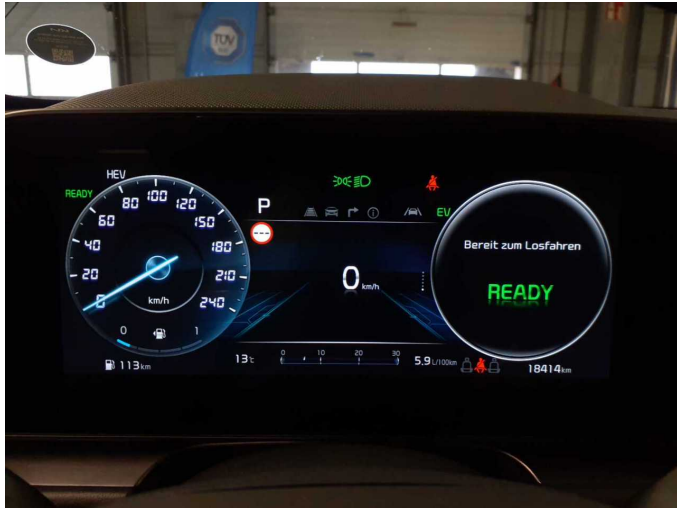


Figure 7: Instrument cluster



Figure 8: Instrument panel



Figure 9: Interior 360° view ([Online Link](#))



Figure 10: Cargo area



Figure 11: VIN



Figure 12: Mounted tyres



Figure 13: Documents



Figure 14: Additional tyres



Figure 15: Navigation

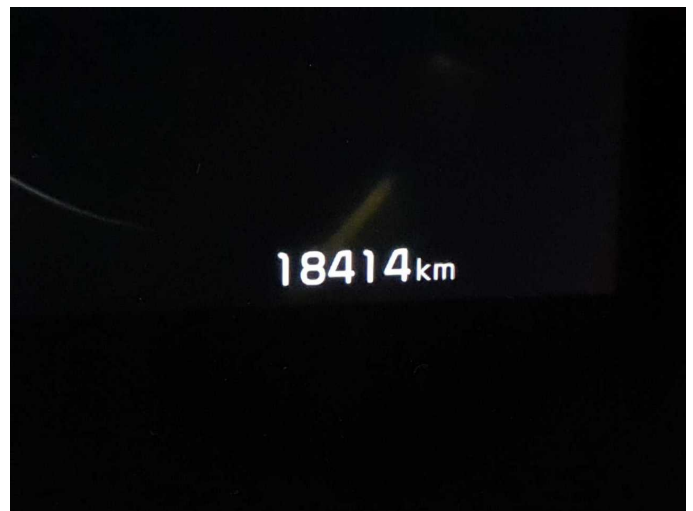


Figure 16: Misc.

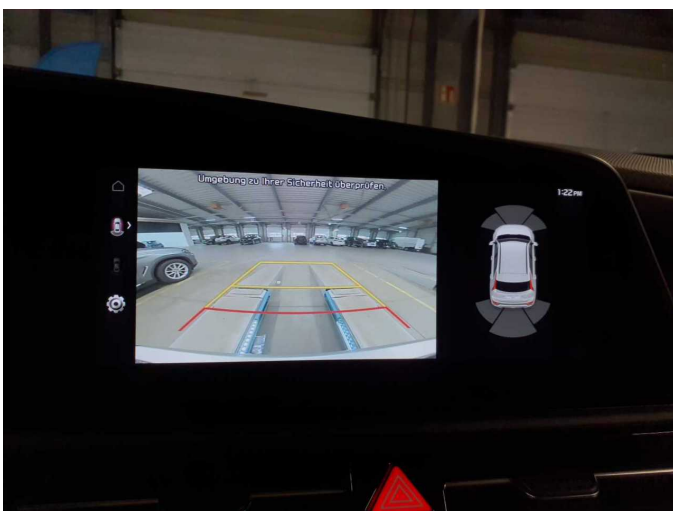


Figure 17: Misc.



Figure 18: Misc.



Figure 19: Misc.



Figure 20: Misc.



Figure 21: Misc.



Figure 22: Misc.

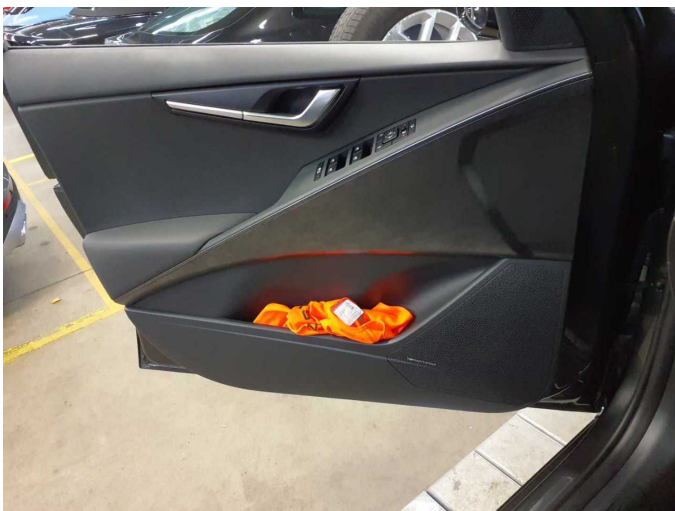


Figure 23: Misc.



Figure 24: Misc.



Figure 25: Misc.



Figure 26: Misc.

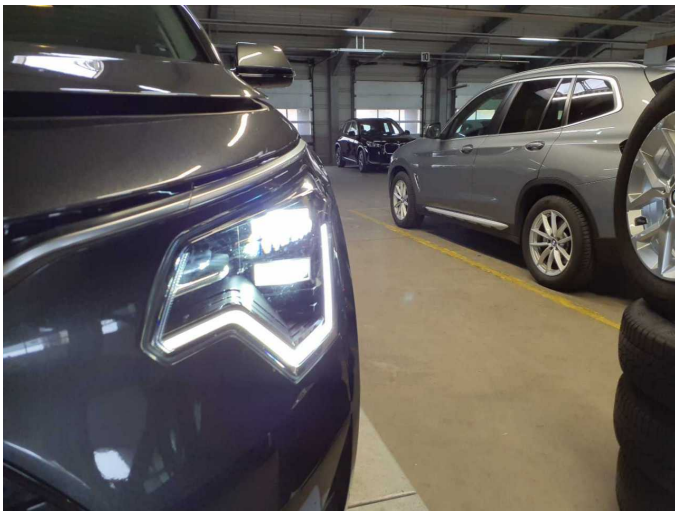


Figure 27: Misc.

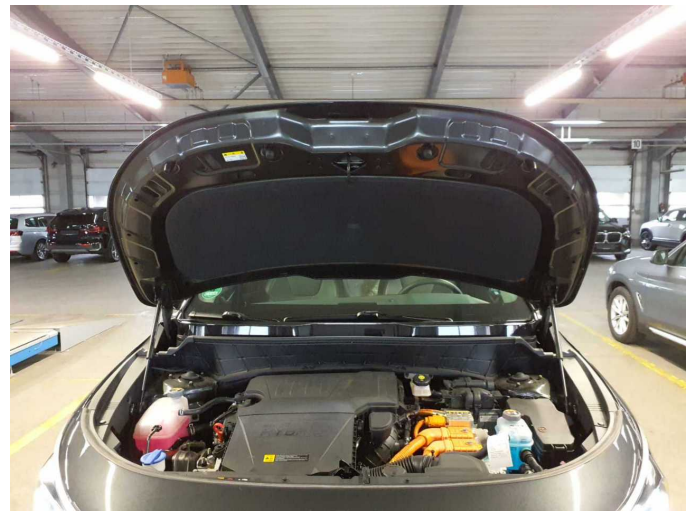


Figure 28: Misc.

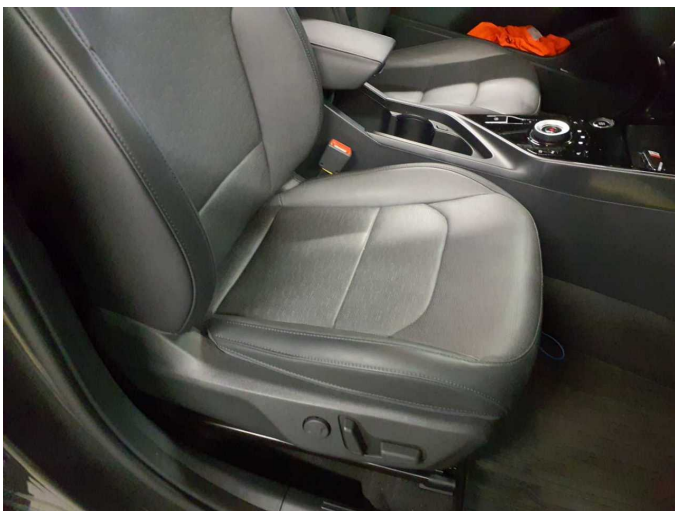


Figure 29: Misc.



Figure 30: Misc.



Figure 31: Misc.



Figure 32: Misc.



Figure 33: Misc.



Figure 34: Misc.



Figure 35: Misc.



Figure 36: Misc.



Figure 37: Misc.



Figure 38: Misc.

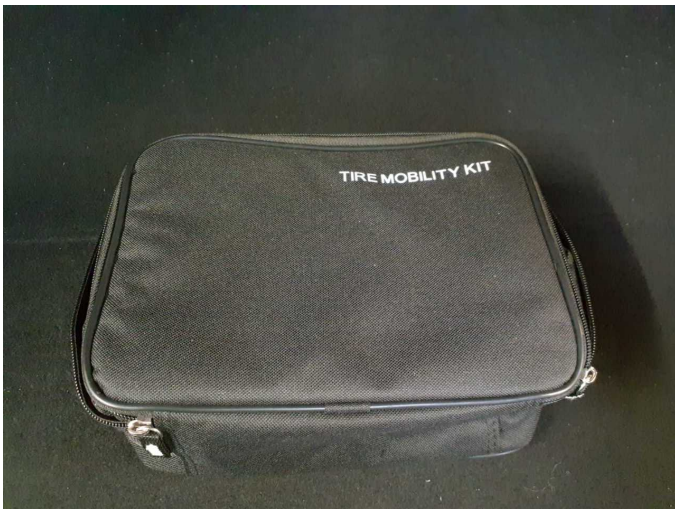
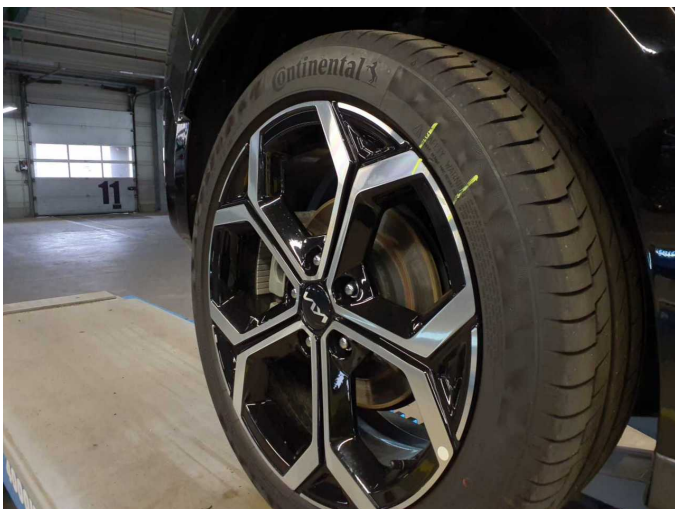


Figure 39: Misc.



Figure 40: Misc.



**Damage 1:** Wheel / tyres: Tyre - rear right side (nicht fahbereit) - Porous / cracked - Replace



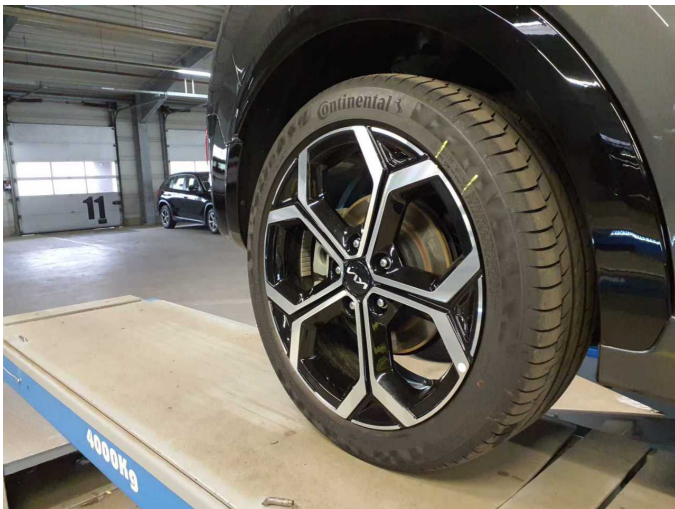
**Damage 1:** Wheel / tyres: Tyre - rear right side (nicht fahbereit) - Porous / cracked - Replace



**Damage 1:** Wheel / tyres: Tyre - rear right side (nicht fahbereit) - Porous / cracked - Replace



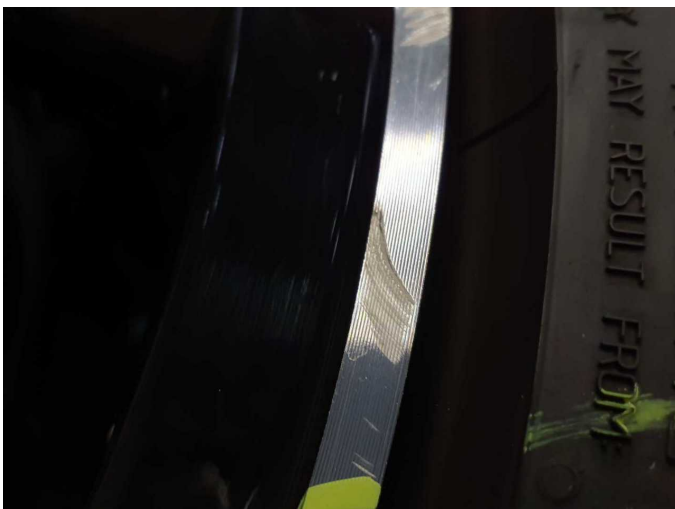
**Damage 1:** Wheel / tyres: Tyre - rear right side (nicht fahbereit) - Porous / cracked - Replace



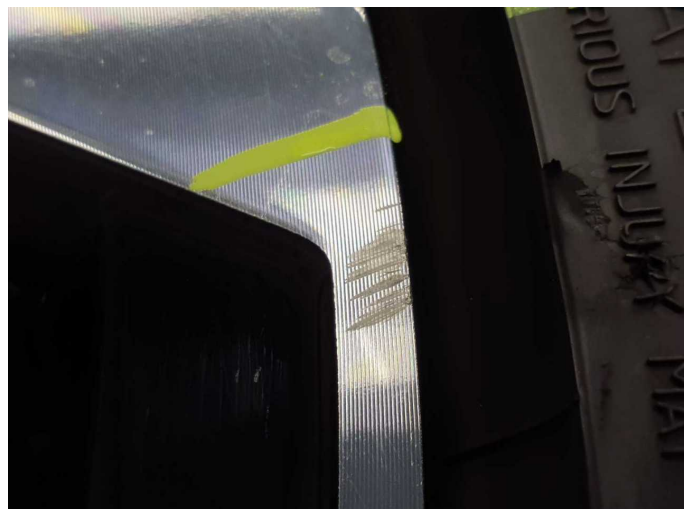
**Damage 2:** Wheel / tyres: Alloy rim - rear right side - Scratched - Loss in value



**Damage 2:** Wheel / tyres: Alloy rim - rear right side - Scratched - Loss in value



**Damage 2:** Wheel / tyres: Alloy rim - rear right side - Scratched - Loss in value



**Damage 2:** Wheel / tyres: Alloy rim - rear right side - Scratched - Loss in value