

Expertise

Protocol number: 46213765
Order No. / Reference: 26543288
Inspection date: 26 Jun 2026

Manufacturer: Audi

Model: Q5 35 TDI S tronic S line

VIN: WAUZZZFY0R2010850



Vehicle details

Manufacturer / Type / Model / Equipment

Audi Q5 35 TDI S tronic S line

Vehicle Identification number WAUZZZFY0R2010850

Mileage (Read) 191,938 km

First registration 7 Dec 2023

Number of holders 1

Next periodical technical inspection 12/2026
(Report not on hand)

Power / Engine displacement 120 kw / 1,968 ccm

Fuel type / Cylinder Hybrid Diesel / E / 4

Gearbox / Number of gears Automatic /

Type of drive Front drive

Type of vehicle Station wagon

Colour / colour code daytonagrau perleffekt
(Z7S)

Doors / Seats 5 / 5

Upholstery type Cloth / leather
combination

Colour of upholstery Anthracite-Grey



Vehicle details

Maintenance booklet / proof	digital evidence / incomplete	Next maintenance in	15,700 km
Last service on / at	05/2026 at 186,623 km		
Key is / should be	2 / 2	FZG documents	ZB#2 (B) was available (copy), ZB#1 (S) was not available.
		Letter No.	GY239333
Previous damage / Accident	None detectable	Repainting	None detectable
Inspection conditions	sufficient	Lifting equipment / pit	No
Test drive	Not performed	Engine function test	Performed
Manufacturer key number/ type code number	0588 / BQC 00313		
Emission standard	EURO6;WLTP;AP;PI/CI; M, N1 I	fine dust sticker	
Permitted total weight	2,420 kg	Empty weight	

Tyres

Mounted tyres				
#	Tyre size	Type of tyre	Manufacturer	Tread depth
1)	235/55 R19 105V	Summer tyres on Light alloy	Goodyear	7mm / 7mm
2)	235/55 R19 105V	Summer tyres on Light alloy	Goodyear	8mm / 8mm
Additional tyres				
#	Tyre size	Type of tyre	Manufacturer	Tread depth
1)	235/65 R17 108H	Winter tyres on Light alloy	Pirelli	5mm / 5mm
2)	235/65 R17 108H	Winter tyres on Light alloy	Pirelli	6mm / 6mm

Legend: Tread depth information for the left tire is listed first, for the right tire it is listed second on the axle in the direction of travel.

TÜV SÜD Auto Partner GmbH
Wiesenring 2
04159 Leipzig

Inspection location
Hartmann Fleet Professionals GmbH
Leerenstraße 25
29683 Bad Fallingbommel



Equipment



Standard equipment

- AdBlue tank (12 liters) (tank for AdBlue solution for reducing nitrogen oxides in the exhaust gas using an SCR system)
- Accent surfaces in matte black (for air vents and center console insert)
- Anti-lock braking system (ABS) (with electronic brake force distribution (EBD))
- Traction control (ASR)
- Audi drive select (adjustment of vehicle characteristics in the available modes auto, comfort, dynamic, allroad, offroad and individual by adjusting the steering assistance, engine characteristics or shift characteristics, adaptive dampers and setting other optional equipment.)
- Audi pre sense city (Within system limits, an impending collision with vehicles and pedestrians can be detected at speeds up to approximately 85 km/h. In this case, the system warns the driver visually, audibly, and, if necessary, with a braking jolt. It can initiate full deceleration if required to reduce the collision speed or, if possible, avoid the collision altogether.)
- Electrically adjustable, heated and folding exterior mirrors, automatically dimming on both sides (including curb view function for the passenger side - with integrated LED turn signal - aspherical mirror glass on the left, convex on the right - including heated windshield washer nozzles - the curb view function tilts the passenger exterior mirror downwards when reverse gear is engaged, giving the driver a better view of the curb).
- Exterior mirror housings in body color
- Third brake light (in LED technology)
- Headliner in fabric (in titanium grey or atlas beige, color-matched to the respective interior color)
- Decorative inserts in micrometallic silver (for dashboard, door panels and center console)
- Parking aid plus (supports the driver with acoustic signals and a display message when parking and maneuvering. The parking aid is activated by engaging reverse gear or via a button in the center console, or automatically when the distance to a detected object is less than 90 cm. Automatic activation can be switched on and off.)
- Electronic Stability Control (ESC)
- Electric windows front and rear
- Front and rear floor mats (made of velour in black)
- Electrically opening and closing tailgate (The tailgate opens electrically after unlocking and can be closed again at the touch of a button. Closing the tailgate is just as easy and convenient as opening it, using the button on the inside of the tailgate, the vehicle key button, or the button in the driver's door. The soft-close function makes manual closing easier when necessary. In areas with low ceilings, the opening angle of the tailgate can be limited.)
- rear window wiper
- Interior mirror, automatically dimming, frameless
- Airbag for driver and front passenger (with front passenger airbag deactivation)
- Airbag: Front side airbags and head airbag system (front side airbags integrated into the seatbacks. With head airbag system: deploys in front of the side window area and thus protects front and outer rear passengers in the event of a side impact.)
- Audi connect Emergency Call & Service with Audi connect Remote & Control (The Audi connect Emergency Call & Service services ensure a safe feeling on every journey. For example, in the event of a serious accident, an automatic emergency call is triggered to the Audi emergency call center. - Emergency Call & Service: Emergency call, online breakdown call, Audi damage service, Audi service appointment online - Remote & Control: Parking position, vehicle status, remote control, locking/unlocking, remote control of auxiliary heating, push notification, anti-theft alarm system)
- Audi virtual cockpit plus (fully digital 12.3-inch instrument cluster in full HD with additional graphic display options: Classic, Sport, Dynamic design - Display of the respective information: speed, engine speed, map display, Audi connect services, radio media information, etc. - Configuration of on-board computer values in the tachometer - Break recommendation - Operation via the multifunction steering wheel - Display of the navigation map as a 3D terrain model - Permanent display of navigation information)
- Hill Descent Assist (enables controlled descent on steep slopes up to 30 km/h)
- Roof edge spoiler
- Black roof rails with roof rack recognition (including roof base carrier)
- Diesel particulate filter (DPF)
- Door sill trims with aluminum inlay at the front, illuminated, with S lettering
- Electromechanical parking brake (includes parking brake function when stationary, starting aid by automatic release when starting and full deceleration while driving via all 4 wheels)
- Chassis: Standard chassis (for good ride comfort and driving dynamics, with a 25 mm lower ride height compared to quattro models to reduce air resistance. The resulting reduction in air resistance can help save fuel)
- Cruise control system including speed limiter (maintains the desired speed from approximately 20 km/h, provided the engine power or engine braking effect allows it; adjustable speed limiter allows individual limitation of the maximum speed, e.g. within built-up areas)
- Transmission: S tronic 7-speed
- Heated rear window
- Interior lighting (roof module including reading lights for driver and front passenger - capacitively operated - reading lights in the rear - ambient light on the center console - illuminated vanity mirrors in the front - glove compartment light - passive door warning lights - trunk light left and right - approach lighting on the right side of the tailgate)
- Manual child lock



- Camera-based traffic sign recognition (Supports the driver by displaying traffic signs detected within the system's limits, such as speed limits, no-overtaking zones, and temporary speed restrictions, which are within the detection range of the front camera. The traffic sign recognition is displayed automatically in the digital instrument cluster or in the optional Audi virtual cockpit.)
- Automatic climate control (1-zone - electronically regulates air temperature, volume and distribution, sun position-dependent control - air distribution can be set using 5 main positions - 3 LEDs integrated into the seat heating/ventilation buttons provide feedback on the selected setting (optional) - buttons for defrosting the front and rear windows - manual recirculation control - with key recognition and humidity sensor - dust and odor-removing cabin air filter)
- Rear headrests (3)
- Front headrests
- Stainless steel loading sill protector
- LED headlights: Matrix LED headlights with dynamic light display and dynamic turn signals (multifunction camera - headlight cleaning system). Front and rear LED headlights with the following functionalities: - visually enhanced daytime running lights - low beam - high beam - position lights - turn signals - cornering lights - all-weather lights - maneuvering lights - motorway lights - automatic dynamic headlight range control - static cornering lights - dynamic light display for coming home/leaving home functions.
- front center armrest
- Model designation according to new performance labeling
- Navigation: MMI Navigation plus with MMI touch (Navigation system on the high-resolution 10.1-inch color display, 7-inch driver information system, map updates, 3D city display, highly detailed 3D city models, personal route assistance, online traffic information plus, MMI search, MMI touch, infotainment operation via natural language interaction, detailed route information. Includes Audi connect Nav & Infotainment, use of navigation data for predictive and efficient driving, country information. Input of up to 10 waypoints)
- Wheel: Tire repair kit (with 12-volt compressor and tire sealant in the luggage compartment, maximum permissible speed 80 km/h)
- Reversing camera (Within the system's limits, the reversing camera captures the area behind the vehicle and displays it on the MMI screen using dynamic display elements. The system allows a choice between perpendicular parking mode and trailer mode (in conjunction with a factory-installed trailer hitch). Depending on the selected mode, the calculated driving lane or a guide line for coupling a trailer is displayed. The reversing camera is discreetly integrated into the tailgate handle.)
- Electromechanical power steering (maintenance-free rack and pinion steering with speed-dependent steering assistance; precise steering feel at high speeds, excellent support when parking.)
- Seat covers in fabric (synonym: seat center panel in black fabric - seat side bolsters, headrests, front center armrest and door panel inserts in solid black fabric)
- ISOFIX and Top Tether child seat attachment for the outer rear seats (holding device for the practical attachment of ISOFIX child seats with an additional upper attachment point (Top Tether) on the outer rear seats)
- boot floor mat
- Comfort key (without Safelock) (provides access and engine start authorization without actively using the vehicle key. With the electronic access and immobilizer system, you can open your vehicle at the doors and tailgate via wireless communication between the key and the vehicle, and lock it using the sensors on the door handles. The comfort key must be carried in the vehicle for this to work. The engine is started and stopped using the engine start/stop button.)
- Steering wheel: Leather steering wheel in 3-spoke design with multifunction plus (with 14 multifunction buttons for convenient operation of the available infotainment features such as audio skip, telephony, NAV button or the freely programmable button - adjustable in height and distance - with full-size airbag - shift paddles for manual changing of the driving modes)
- Mild hybrid (Mild hybrid features an enhanced start-stop function, extended energy recuperation during braking to charge the starter battery, and additional lithium-ion storage. This allows the system to recover more energy and switch off the engine more frequently. A supplementary belt-driven starter generator (BSG) is conceptually included for mild hybrid systems. Purely electric driving is not possible.)
- Non-smoking version (one 12-volt socket each at the front and rear - storage compartment at the front)
- Wheel: On-board tools (excluding jack)
- Wheel: Alloy wheels, 18" 5-arm star (8.0 J x 18, tire 235/60 R 18)
- Wheel: Tire pressure monitoring system (visual and audible warning in case of pressure loss in one or more wheels - display in the driver information system)
- Radio: MMI Radio plus with MMI touch (10.1" color display (1,540 × 720) including MMI touch operation - Driver information system with 7" color display - Audi music interface with 1 USB-A, 1 USB-C port, each with data and charging function - Bluetooth interface (hands-free calling and audio streaming) - 8 passive speakers, 4 front, 4 rear - DAB+ - AM/FM phase diversity - speed-dependent volume adjustment - voice control system with natural language for controlling infotainment and vehicle functions - WLAN hardware - teaser phases)
- Seat belts (with height adjustment and seat belt reminder for all seats. Acoustic and visual warning signals remind the front seat belts to fasten. A visual warning signal alerts the rear seat belts to unfastening.)
- Seats: Standard front seats
- Seats: Rear seat backrest, split and foldable (split, in a 40:20:40 ratio or fully foldable, with center armrest - including four lashing eyes in the luggage compartment, for securing luggage and objects, attachment points for the luggage compartment net)
- Front sun visor



- Seats: Front seats manually adjustable (with manual adjustment of seat height, seat longitudinal position, backrest angle, headrest and seat belt height)
- Front seat heating (for driver and front passenger side, individually adjustable in 3 stages via direct selection button on the climate control unit)
- Start-stop system
- Telephone: Audi Phone Box (features as Audi phone box light; additional functions: The Audi phone box includes: - Bluetooth interface - Hands-free system - Coupling antenna for connecting the mobile phone to the external antenna for improved reception quality and reduced mobile phone radiation in the vehicle interior - LTE support - Charging option via USB port or wireless charging (Qi standard) - Forgetfulness warning - Charging status display in the MMI touch display)
- Partition net (to be attached to the body or to the folded-down rear seat backrest, helpful whether the rear seat backrest is upright, folded down on one side or completely folded down, removable)
- Glazing: Windscreen in heat-insulating and acoustic glazing (windscreen in heat-insulating glazing, green tinted - improved external noise insulation)
- Electronic immobilizer (integrated into the engine control unit, automatic activation via vehicle key)
- black decorative trim

Extra equipment

- Accent areas in glossy black
- Decorative inlays in matt brushed aluminum
- Comfort center armrest at the front (adjustable in tilt and longitudinally sliding or completely foldable)
- Fuel tank 70 liters with additional 24-liter AdBlue tank (larger tank for AdBlue solution)
- Paint finish: Pearl effect
- Assistance Package Tour (adaptive speed assistant (0-250 km/h) - traffic jam assistant - Audi active lane assist (above 65 km/h) - predictive efficiency assistant - left turn assistant - evasive steering assistant - high beam assistant)
- Seat covers in Sequenz fabric/leather
- Seats: Pneumatically adjustable lumbar support with massage function (The lumbar support provides support in the lumbar region through targeted inflation and deflation of three lordosis bladders and is adjustable via lumbar support buttons on the seat. The massage function, with three different programs (wave, stretch, kneading) and three intensity levels, can be switched on and off via the lumbar support buttons with integrated direct massage buttons. Programs and intensity levels can be adjusted via the MMI. Massage duration approximately 10 minutes.)

- Lane Departure Warning (within system limits, helps prevent unintentional lane departures. If the system is activated and ready, and the driver has not used the turn signal, the Lane Departure Warning helps prevent crossing detected lane markings by making corrective steering interventions. Additional steering wheel vibration can be set at the driver's request. Operating range from approximately 60 to a maximum of 250 km/h)
- Telephone: Bluetooth interface (The smartphone can be connected to the vehicle via Bluetooth to play music through the vehicle or to make phone calls. Depending on the smartphone model, emails and SMS messages can also be displayed in the MMI via Bluetooth.)
- First aid kit with warning triangle (warning triangle in the trunk - first aid kit in the trunk - 2 high-visibility vests in the door pockets)
- Glazing: Clear glass
- Glazing: Side and rear windows in heat-insulating glass (for rear window, door and side windows - green tinted - rear window heated, with timer)
- Central locking with remote control

- Towbar (ball head mechanically swiveling with electric release - ball rod and head made of forged steel - operation via push button in the luggage compartment - trailer stabilization via the electronic stability control (ESC) The integrated swiveling system socket allows continuous operation of electrical devices in the trailer or caravan while driving and can be swivelled invisibly behind the bumper apron when not in use)
- S line interior package
- Wheel: Light alloy wheels, 19" 5-twin-spoke star (S-design), polished (8.0 J x 19, tires 235/55 R 19)
- Radio accessories: USB charging ports for rear passengers (two USB-A charging ports for rear passengers in the rear center console)
- sunshade roller blind, manual
- Variable folding luggage compartment mat (foldable and collapsible in several segments; usable in full length to cover the luggage compartment floor even with the rear seat backrest folded down and for variable division of the load space; protective length sufficient also for the loading edge and the bumper)



Brief expert findings

Documents submitted	At the time of the inspection, the vehicle registration certificate Part 2 (title) was available, but the vehicle registration certificate Part 1 (document) was not. (Copy)
VIN comparison	The vehicle identification number (VIN) was read from the vehicle and its conformity with the submitted documents was confirmed by the undersigned during the inspection.
Inspection	The inspection conditions were sufficient for the assessment of the vehicle. No lifting equipment or pit was available for inspecting the vehicle. Therefore, inspection of the vehicle's underside was only possible to a limited extent.
Test drive	No test drive/shunting maneuver was carried out during the inspection of the vehicle.
Engine function test	An engine test run was performed.

Value reducing factors

No.	Component group	Description
1	Side panel - rear left side	Wheel well extension - Scratch(es) - Smart repair
2	Side panel - rear right side	Sill - dent(s) - Smart repair
3	Side panel - rear right side	Wheel well extension - Scratch(es) - Smart repair
4	Front bumper	Front bumper - Scratch(es) - Smart repair
5	Door - rear left side	Door edge - Scratch(es) - Smart repair
6	Rear bumper	Rear bumper - Scratch(es) - Paint
7	Vehicle glazing	Windscreen - Stone chips - Replace

Wear and tear

No.	Component group	Description
1	Bonnet	Bonnet - Stone chips - No deduction

The vehicle shows signs of wear and tear commensurate with its age and use.

Missing parts

Description

Equipment - Tirefit filler

Order/Scope of Order

An order was placed to prepare a sales report for the described vehicle. This report includes the following:

- Description of key vehicle information
- Documentation of equipment features
(*Delivery by third-party service providers*)
- Documentation of damage, defects, missing parts
- Documentation of prior damage, unrepaired prior damage, repainting
- A brief visual or functional inspection of the equipment details, if possible.
(*Functional testing of driver assistance systems is not included in the scope of services!*)
- a photographic documentation of the vehicle



Basis for the order

This product is based on the guidelines for vehicle returns and valuations published by Alphabet Fleet GmbH. The expert makes the specific findings in each individual case objectively, within the framework of the prescribed standards, based on their own expertise.

The vehicle inspection takes place in a fully assembled, unassembled state.

Damage or defects that can only be detected during disassembly/diagnostic work or through further investigation remain within the realm of prognostic risk. An increased risk exists due to concealed defects caused by fraudulent misrepresentation and which were not identifiable by the expert.

Damage or defects resulting from normal use or wear and tear of the vehicle will be accepted in accordance with the applicable standard.

There was no explicit identification or monetary consideration of the expected features within the product.

Features which, in their nature and extent, slightly exceed normal use but do not constitute unacceptable damage, will be documented and indicated as signs of wear, if applicable.

Damage or defects that, according to the applicable standard, can no longer be attributed to normal use or wear and tear are listed under "Value Reducing Factors" in the product description.

Depending on the product specification, a monetary ID can be provided. If this takes place, the costs can be 100% or pro rata depending on the vehicle's age and mileage.

Previous damages

No apparent prior damage that had been repaired could be found on the vehicle.



Figure 1: Diagonal front (left)



Figure 2: Diagonal front (right)



Figure 3: Diagonal rear (left)



Figure 4: Diagonal rear (right)



Figure 5: Interior - front



Figure 6: Interior - rear



Figure 7: Instrument cluster



Figure 8: Instrument panel



Figure 9: Interior 360° view



Figure 10: Cargo area



Figure 11: VIN



Figure 12: Mounted tyres



Figure 13: Documents



Figure 14: Additional tyres

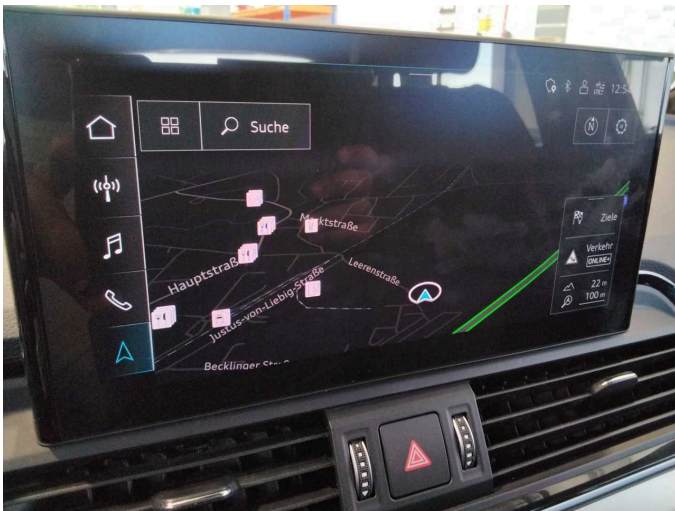


Figure 15: Navigation

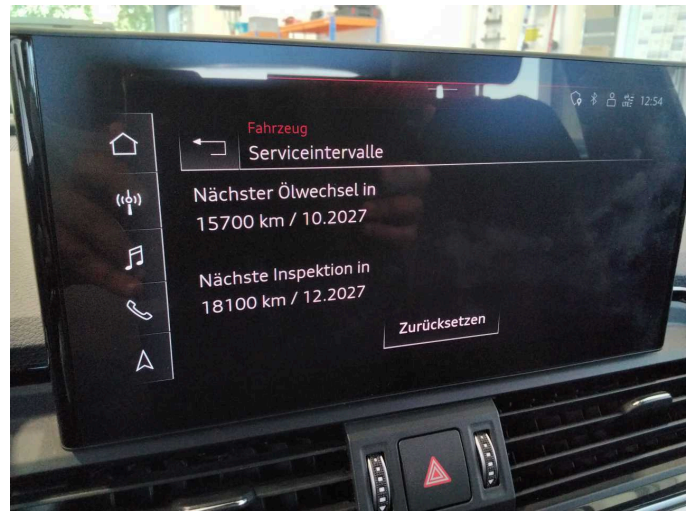


Figure 16: Misc.



Figure 17: Misc.



Figure 18: Misc.



Figure 19: Misc.



Figure 20: Misc.

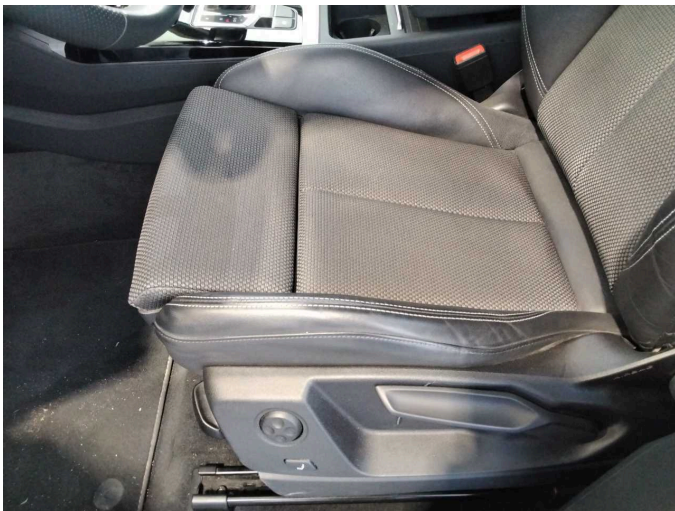


Figure 21: Misc.



Figure 22: Misc.



Figure 23: Misc.

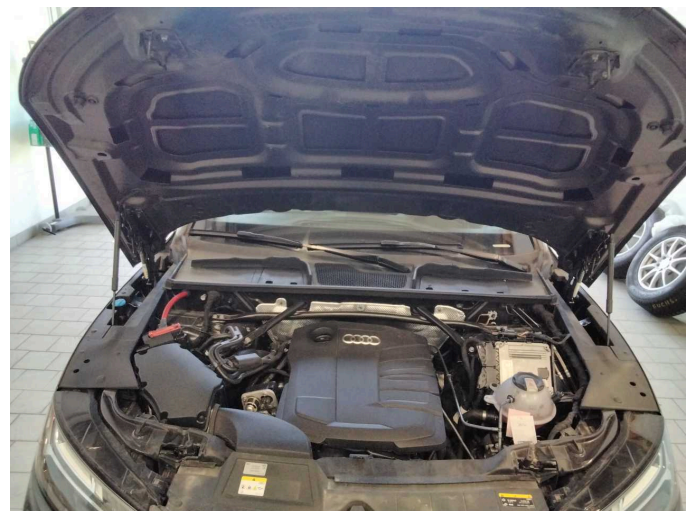


Figure 24: Misc.



Figure 25: Misc.



Figure 26: Misc.

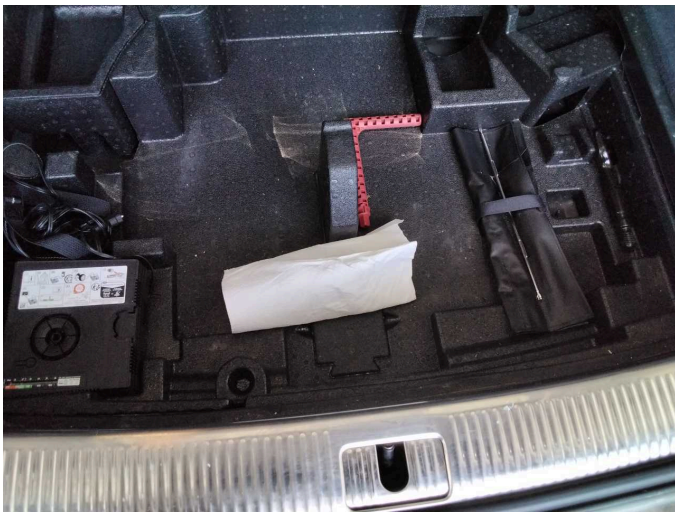


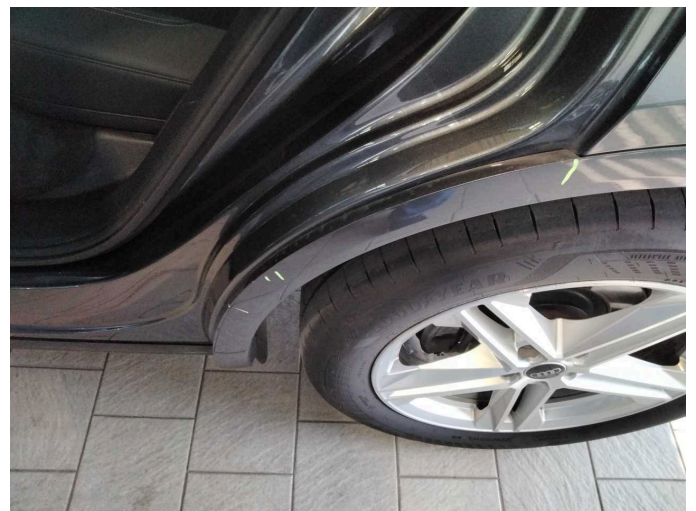
Figure 27: Misc.



Figure 28: Misc.



Figure 29: Misc.



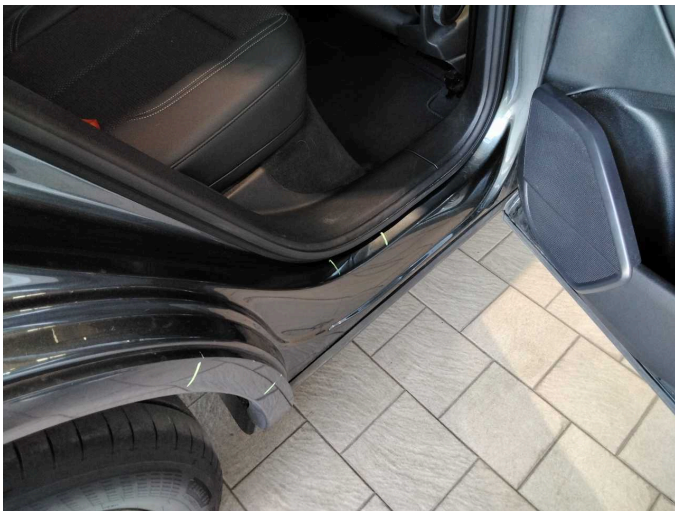
Damage 1: Side panel - rear left side: Wheel well extension - Scratch(es)
- Smart repair



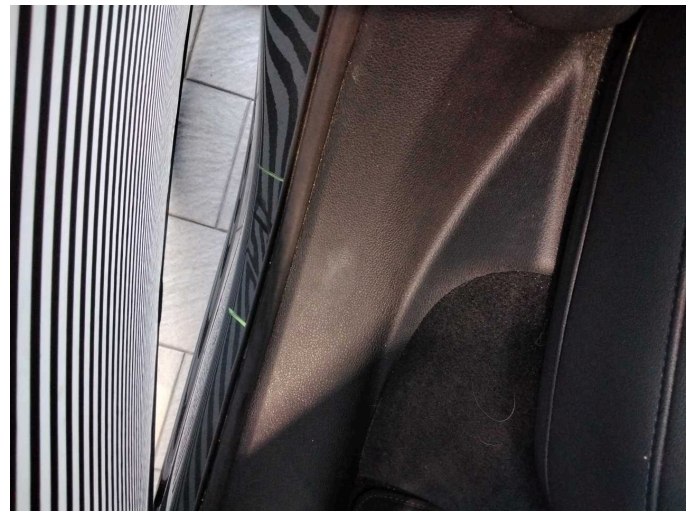
Damage 1: Side panel - rear left side: Wheel well extension - Scratch(es) - Smart repair



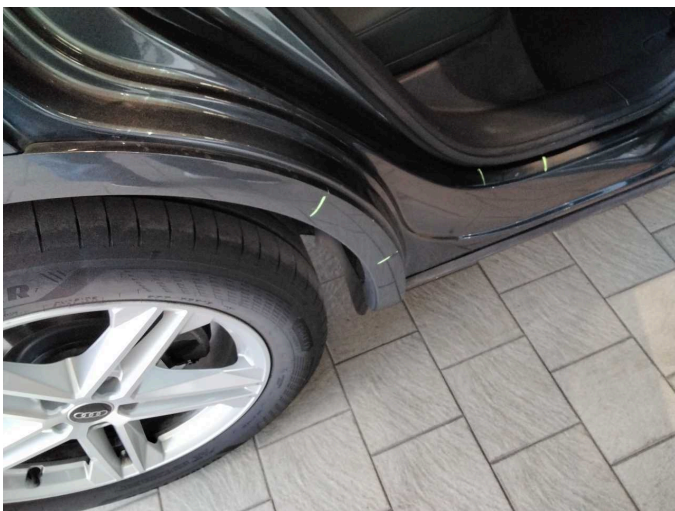
Damage 1: Side panel - rear left side: Wheel well extension - Scratch(es) - Smart repair



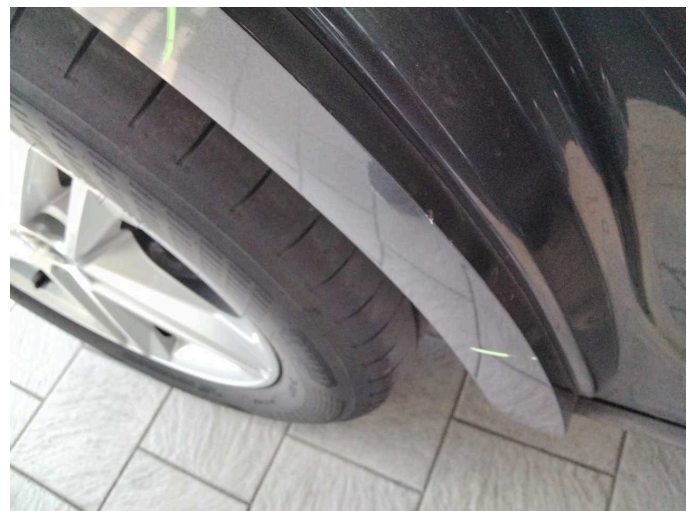
Damage 2: Side panel - rear right side: Sill - dent(s) - Smart repair



Damage 2: Side panel - rear right side: Sill - dent(s) - Smart repair



Damage 3: Side panel - rear right side: Wheel well extension - Scratch(es) - Smart repair



Damage 3: Side panel - rear right side: Wheel well extension - Scratch(es) - Smart repair



Damage 4: Front bumper: Front bumper - Scratch(es) - Smart repair



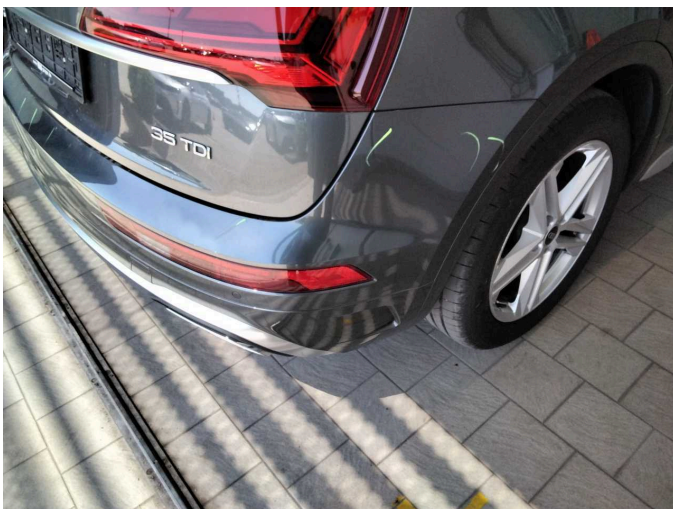
Damage 4: Front bumper: Front bumper - Scratch(es) - Smart repair



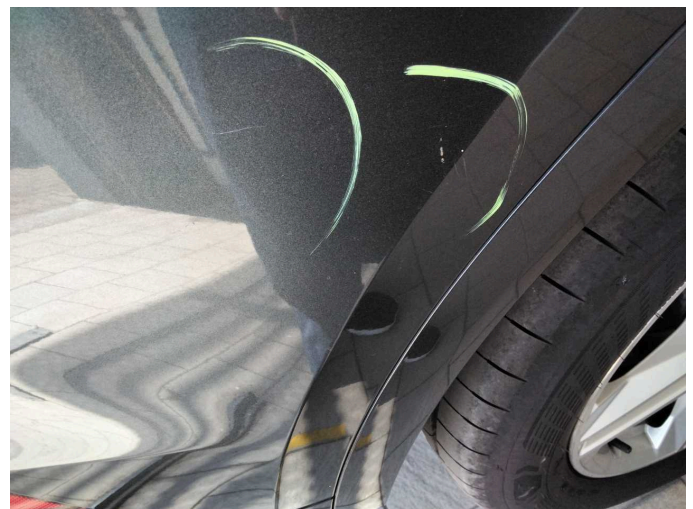
Damage 5: Door - rear left side: Door edge - Scratch(es) - Smart repair



Damage 5: Door - rear left side: Door edge - Scratch(es) - Smart repair



Damage 6: Rear bumper: Rear bumper - Scratch(es) - Paint



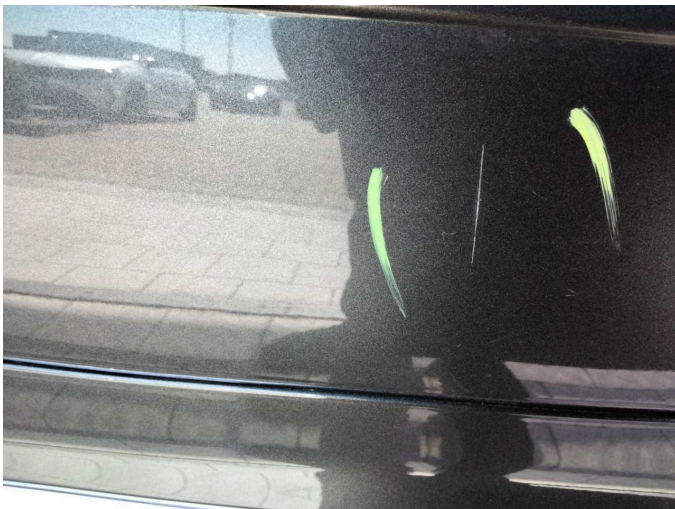
Damage 6: Rear bumper: Rear bumper - Scratch(es) - Paint



Damage 6: Rear bumper: Rear bumper - Scratch(es) - Paint



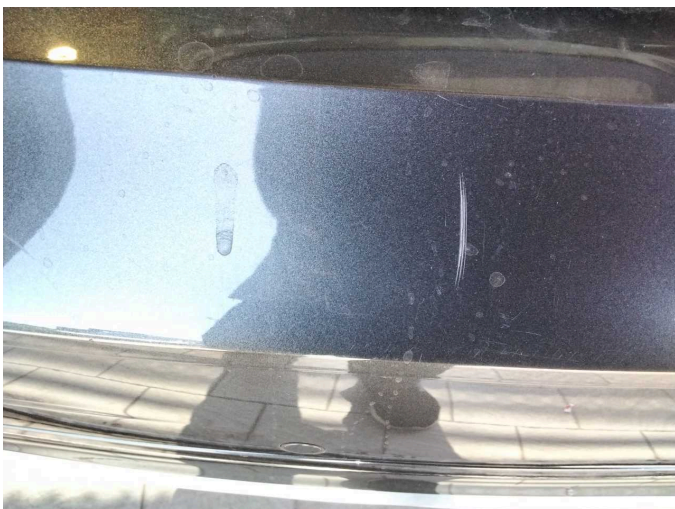
Damage 6: Rear bumper: Rear bumper - Scratch(es) - Paint



Damage 6: Rear bumper: Rear bumper - Scratch(es) - Paint



Damage 6: Rear bumper: Rear bumper - Scratch(es) - Paint



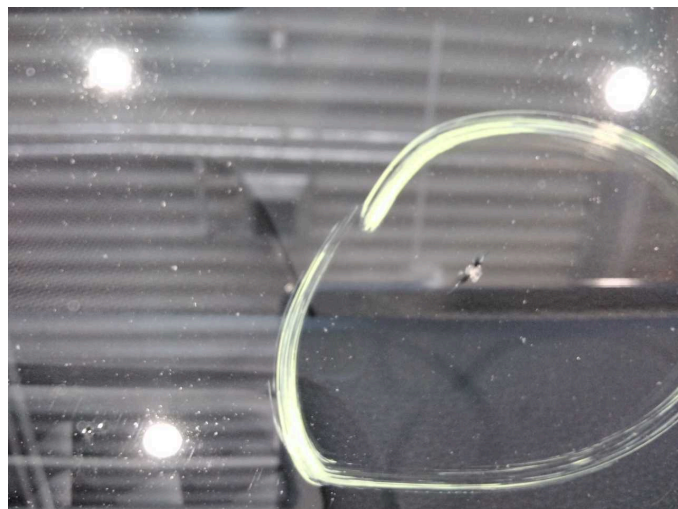
Damage 6: Rear bumper: Rear bumper - Scratch(es) - Paint



Damage 7: Vehicle glazing: Windscreen - Stone chips - Replace



Damage 7: Vehicle glazing: Windscreen - Stone chips - Replace



Damage 7: Vehicle glazing: Windscreen - Stone chips - Replace



Missing part 1: Equipment: Tirefit filler - Missing - Replace