

## Expertise

Protocol number: 46120386  
Order No. / Reference: 26529950  
Inspection date: 24 Jun 2026

Manufacturer: Ford

Model: Transit Custom 320 L1H1 LKW VA Trend

VIN: WF0YXXTTGYNT01940



### Vehicle details

#### Manufacturer / Type / Model / Equipment

Ford Transit Custom 320 L1H1 LKW VA Trend

<b>Vehicle Identification number</b>	WF0YXXTTGYNT01940
<b>Mileage (Read)</b>	170,361 km
<b>First registration</b>	10 Oct 2022
<b>Number of holders</b>	1
<b>Next periodical technical inspection</b>	11/2026 (Report not on hand)

<b>Power / Engine displacement</b>	96 kw / 1,995 ccm
------------------------------------	-------------------

<b>Fuel type / Cylinder</b>	Diesel / 4
-----------------------------	------------

<b>Gearbox / Number of gears</b>	Manual / 6
----------------------------------	------------

<b>Type of drive</b>	Front drive
----------------------	-------------

<b>Type of vehicle</b>	Van
------------------------	-----

<b>Colour / colour code</b>	Frozen White
-----------------------------	--------------

<b>Doors / Seats</b>	4 / 3
----------------------	-------

<b>Upholstery type</b>	Cloth
------------------------	-------

<b>Colour of upholstery</b>	Black
-----------------------------	-------



## Vehicle details

<b>Maintenance booklet / proof</b>	digital proof / complete	<b>Next maintenance in</b>	30,000 km
<b>Last service on / at</b>	12/2025 at 158,432 km		
<b>Key is / should be</b>	3 / 3	<b>FZG documents</b>	ZB#2 (B) was available (copy), ZB#1 (S) was not available.
		<b>Letter No.</b>	GP434378
<b>Previous damage / Accident</b>	None detectable	<b>Repainting</b>	None detectable
<b>Inspection conditions</b>	sufficient	<b>Lifting equipment / pit</b>	yes
<b>Test drive</b>	Not performed	<b>Engine function test</b>	Performed
<b>Manufacturer key number/ type code number</b>	8566 / BMU 07083		
<b>Emission standard</b>	EURO6;WLTP;AR;PI/CI;N1 III, N2	<b>fine dust sticker</b>	
<b>Permitted total weight</b>	3,200 kg	<b>Empty weight</b>	

## Tyres

### Mounted tyres

#	Tyre size	Type of tyre	Manufacturer	Tread depth
1)	215/65 R16 109R	Winter tyres on Steel rim with wheel cover	Pirelli	6mm / 6mm
2)	215/65 R16 109R	Winter tyres on Steel rim with wheel cover	Pirelli	9mm / 9mm

### Additional tyres

#	Tyre size	Type of tyre	Manufacturer	Tread depth
1)	215/65 R16 109T	Summer tyres on Steel	Goodyear	4mm / 4mm
2)	215/65 R16 109T	Summer tyres on Steel	Pirelli	9mm / 9mm

### Replacement

Typ	Tyre size	Type of tyre	Manufacturer	Tread depth
E	215/65 R16 109T C	Summer tyres on Steel	Goodyear	8 mm

**Legend: Tread depth information for the left tire is listed first, for the right tire it is listed second on the axle in the direction of travel.**



## Equipment

### Standard equipment

- 1 battery
- Anti-lock braking system with electronic brake force distribution (EBD)
- roof, flat
- Double-leaf rear door with 180° opening angle (without window)
- Electronic Stability Program (ESP) with Traction Control System (TCS)
- FordPass Connect
- Generator, 240 A
- Cruise control including imitation leather steering wheel
- Lockable glove compartment with lid
- Front air conditioning
- Paint finish: Solid color paint
- Cargo area floor: Vinyl floor covering, sealed, "Easy Clean"
- Emergency brake assist including emergency brake light
- Front and rear parking pilot system including fog lights
- Radio: Audio system 13 additionally with DAB/DAB+
- Wheels/Tires: Spare wheel, steel wheel
- Headlights: Halogen projector headlights
- Sliding door: Sliding door, right
- Mud flaps front and rear
- Half-height side wall cladding
- Seat belts
- Power outlet: 12-volt connection
- Immobiliser
- Central locking with remote control

### Extra equipment

- 3. KEYS/COVERS/MATS
- Rear swing door without window (without interior mirror)
- Retrofitting a towbar
- Radio: Audio system 25: Ford audio system including Ford SYNC 3 with AppLink, DAB/DAB+, navigation (Radio (FM/AM) 8" touchscreen multifunction display, FordPass Connect integrated control panel and audio remote control, Ford SYNC 3 with touchscreen (hands-free system with voice control, SMS readout/sending function, Bluetooth, Emergency Assistance...), AppLink (advanced voice control, privacy mode, support for Android Auto and Apple CarPlay, capacitive touchscreens...), lane guidance, adaptive cruise control, lane keeping assist, traffic sign recognition, Park Pilot front/rear)
- SORTIMO installation
- Blind spot assist including cross traffic alert and trailer function (electrically adjustable and heated exterior mirrors, also electrically foldable)

- Driver's side airbag
- Exterior mirrors, electrically adjustable and heated
- On-board computer
- Headliner in driver's cab
- Tachometer
- Third brake light
- Front electric windows
- Ford Easy Fuel
- Warranty: 2-year Ford new car warranty including Ford Assistance mobility guarantee
- Transmission: 6-speed transmission
- Interior lighting with delay circuit
- Fuel tank 70 l
- Cargo area lighting with activatable switch-off delay
- Steering column, adjustable in height and reach
- Package: Style-Color Package
- Particulate filter: diesel particulate filter
- Wheel trims
- Wheels: Steel wheels 6.5 J x 16 with 215/65 R 16 R tires
- Sliding door entry light automatically illuminates when the door is opened
- Side protection strips
- Power steering
- Start-stop system
- Lashing eyes 8
- Heat-insulating glazing, lightly tinted
- Auxiliary heater, electric

- Airbag (passenger side)
- Cargo area floor: Vinyl floor covering omitted
- Package: Visibility Package II (Trend) (Heated windscreen - Electrically folding exterior mirrors - Adjustable instrument lighting - Windscreen wipers with rain sensor - Headlight assistant with day/night sensor)
- Tire Pressure Monitoring System (TPMS)
- Reversing camera (reversing camera with image transmission of the rear driving path in the multifunction display and coupling aid)
- Seats: Seat Package 15 - Partition (load-through hatch), without window (Custom Truck Trend) (Driver's seat, 4-way adjustable (forward/backward, backrest, seat cushion tilt, height) - Double passenger seat with storage compartment under individually foldable seat cushions - Height-adjustable headrests - Integrated tray in the double passenger seat (fold-out) - Heated driver's seat - Heated passenger seat (outer seat) - Inner armrest for driver - Manual lumbar support (driver's seat) - TREND seat cover: fabric - Partition without window with load-through hatch)



## Brief expert findings

Documents submitted	At the time of the inspection, the vehicle registration certificate Part 2 (title) was available, but the vehicle registration certificate Part 1 (document) was not. (Copy)
VIN comparison	The vehicle identification number (VIN) was read from the vehicle and its conformity with the submitted documents was confirmed by the undersigned during the inspection.
Inspection	The inspection conditions were sufficient for the assessment of the vehicle. Lifting equipment and/or a pit were available for examining the vehicle.
Test drive	No test drive/shunting maneuver was carried out during the inspection of the vehicle.
Engine function test	An engine test run was performed.

## Value reducing factors

No.	Component group	Description
1	Boot lid / rear door	Boot lid - Glued / labelled - De-glue / neutralise
2	Boot lid / rear door	Trim plywood - lower - Broken / torn - Replace
3	Mudguard - left side	Mud flap (Und rechts 2x) - Broken / torn - Replace
4	Equipment	Vehicle key with remote control (Schlüssel-bart fehlt) - Broken / torn - Replace
5	Braking system	Brake discs and brake pads - front - Corrosion - Replace

## Missing parts

### Description

Equipment - Vehicle jack

## Order/Scope of Order

An order was placed to prepare a sales report for the described vehicle. This report includes the following:

- Description of key vehicle information
- Documentation of equipment features  
(*Delivery by third-party service providers*)
- Documentation of damage, defects, missing parts
- Documentation of prior damage, unrepaired prior damage, repainting
- A brief visual or functional inspection of the equipment details, if possible.  
(*Functional testing of driver assistance systems is not included in the scope of services!*)
- a photographic documentation of the vehicle



## Basis for the order

This product is based on the guidelines for vehicle returns and valuations of light commercial vehicles published by Alphabet Fleet Management GmbH. The expert makes the specific findings in each individual case objectively, within the framework of the prescribed standards, based on their own expertise.

The vehicle inspection takes place in a fully assembled, unassembled state.

Damage or defects that can only be detected during disassembly/diagnostic work or through further investigation remain within the realm of prognostic risk. An increased risk exists due to concealed defects caused by fraudulent misrepresentation and which were not identifiable by the expert.

Damage or defects resulting from normal use or wear and tear of the vehicle will be accepted in accordance with the applicable standard.

There was no explicit identification or monetary consideration of the expected features within the product.

Features which, in their nature and extent, slightly exceed normal use but do not constitute unacceptable damage, will be documented and indicated as signs of wear, if applicable.

Damage or defects that, according to the applicable standard, can no longer be attributed to normal use or wear and tear are listed under "Value Reducing Factors" in the product description.

Depending on the product specification, a monetary ID can be provided. If this takes place, the costs can be 100% d or pro rata depending on the vehicle's age and mileage.

## Previous damages

No apparent prior damage that had been repaired could be found on the vehicle.

## Comments

- Winterradsatz ist kein Bestandteil des Auslieferungsumfangs.



Figure 1: Diagonal front (left)



Figure 2: Diagonal front (right)



Figure 3: Diagonal rear (left)



Figure 4: Diagonal rear (right)



Figure 5: Interior - front



Figure 6: Interior - rear



Figure 7: Instrument cluster



Figure 8: Instrument panel



Figure 9: Interior 360° view



Figure 10: Cargo area



Figure 11: VIN



Figure 12: Mounted tyres



Figure 13: Documents



Figure 14: Documents



Figure 15: Navigation



Figure 16: Misc.

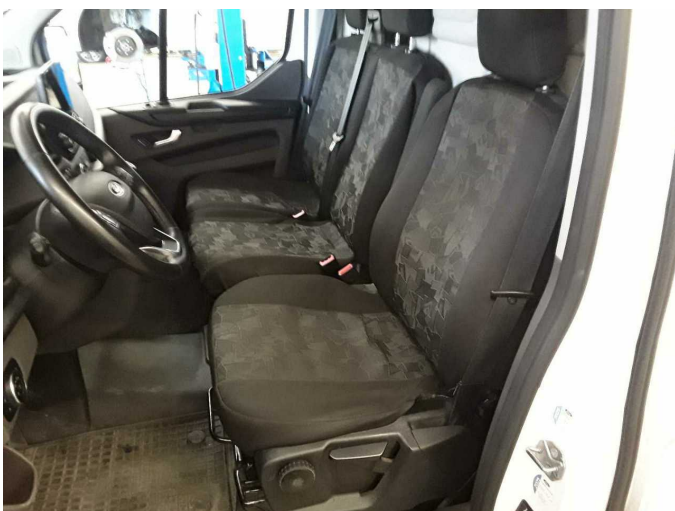


Figure 17: Misc.



Figure 18: Misc.



Figure 19: Misc.



Figure 20: Misc.



Figure 21: Misc.



Figure 22: Misc.



Figure 23: Misc.



Figure 24: Misc.



Figure 25: Misc.



Figure 26: Misc.



Figure 27: Misc.



Figure 28: Misc.

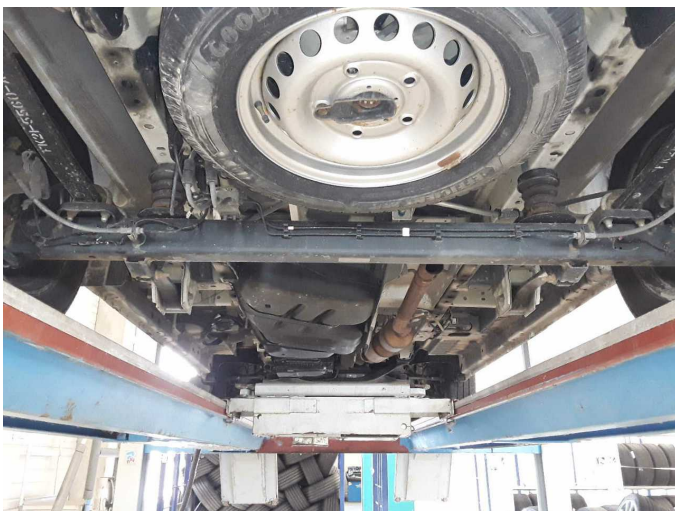


Figure 29: Misc.

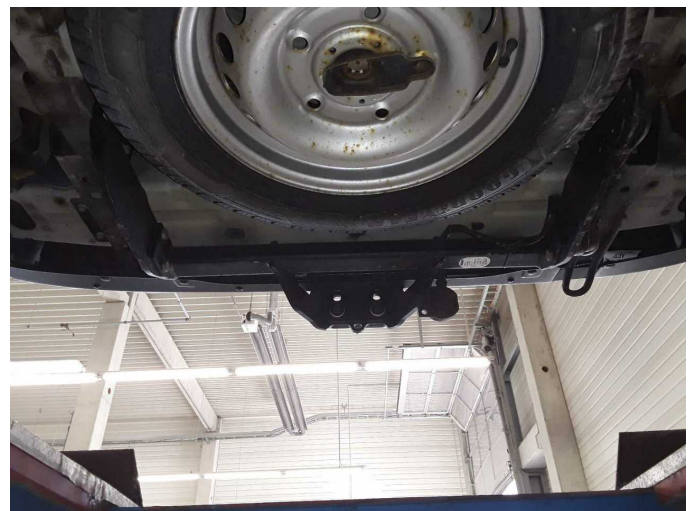


Figure 30: Misc.



Figure 31: Misc.



Figure 32: Misc.



Figure 33: Misc.



Figure 34: Misc.



**Damage 1:** Boot lid / rear door: Boot lid - Glued / labelled - De-glue / neutralise



**Damage 2:** Boot lid / rear door: Trim plywood - lower - Broken / torn - Replace



**Damage 2:** Boot lid / rear door: Trim plywood - lower - Broken / torn - Replace



**Damage 3:** Mudguard - left side: Mud flap (Und rechts 2x) - Broken / torn - Replace



**Damage 3:** Mudguard - left side: Mud flap (Und rechts 2x) - Broken / torn - Replace



**Damage 3:** Mudguard - left side: Mud flap (Und rechts 2x) - Broken / torn - Replace



**Damage 3:** Mudguard - left side: Mud flap (Und rechts 2x) - Broken / torn - Replace



**Damage 4:** Equipment: Vehicle key with remote control (Schlüssel-bart fehlt) - Broken / torn - Replace



**Damage 5:** Braking system: Brake discs and brake pads - front - Corrosion - Replace



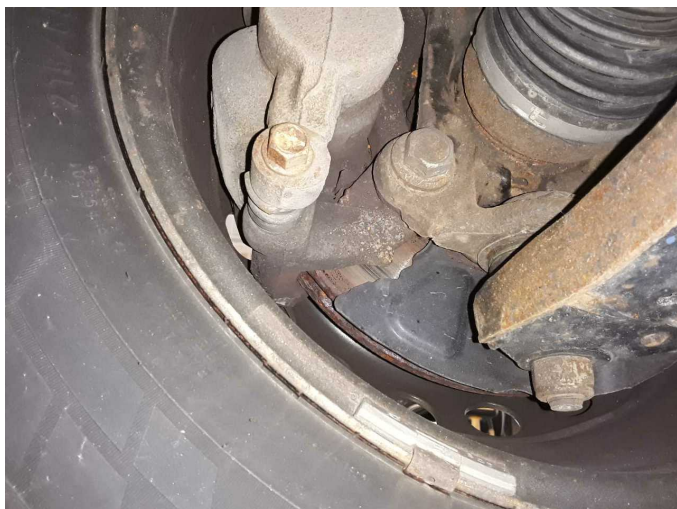
**Damage 5:** Braking system: Brake discs and brake pads - front - Corrosion - Replace



**Damage 5:** Braking system: Brake discs and brake pads - front - Corrosion - Replace



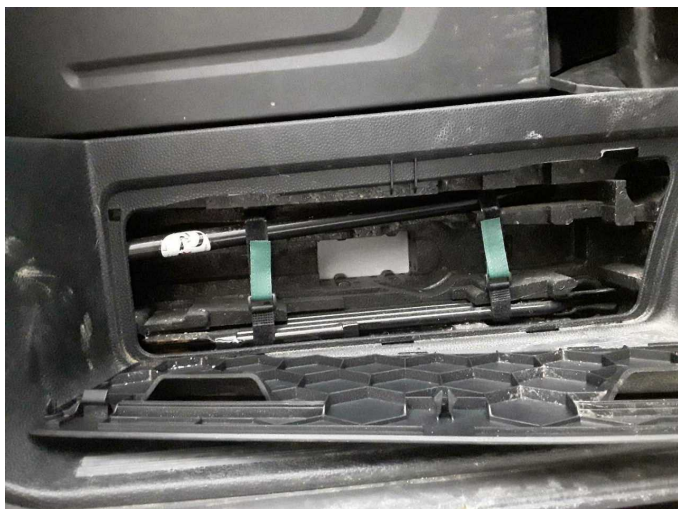
**Damage 5:** Braking system: Brake discs and brake pads - front - Corrosion - Replace



**Damage 5:** Braking system: Brake discs and brake pads - front - Corrosion - Replace



**Damage 5:** Braking system: Brake discs and brake pads - front - Corrosion - Replace



**Missing part 1:** Equipment: Vehicle jack - Missing - Replace



# Wartungshistorie

(gemäß Auftraggeber Informationen)

Fahrgestellnummer: WF0YXXTTGYNT01940

Hersteller / Modell: FORD FORD Transit Custom 320 L1H1 LKW VA Trend

Datum	KM-Stand	Beschreibung
23.12.2025	158.432	Keilrippenriemen; Luftfiltereinsatz ern; Motoröl b. Wartung; Ölfilter ern; Regelwartungsdienst; Reparatur Sonstiges; Wartung Sonstiges; Zahnriemen/Steuerkett ern
07.11.2025	154.234	Bremse Sonstiges; Bremsklötze hinten; Bremsscheiben + Klötze h; Bremsscheiben hinten; Motoröl b. Wartung; Systemtest/Eigendiagnose
07.04.2025	118.270	Bremsbelagfühler ern; Bremse Sonstiges; Bremsklötze vorne; Bremsscheiben + Klötze v; Bremsscheiben vorne; Motoröl b. Wartung; Ölfilter ern; Regelwartungsdienst; Wartung Sonstiges
22.11.2024	97.510	Bremsbelagfühler ern; Bremsklötze hinten; HU + AU
16.08.2024	80.058	Bremsflüssigkeit; Bremsflüssigkeit ern; Luftfiltereinsatz ern; Motoröl b. Wartung; Ölfilter ern; Regelwartungsdienst; Wartung Sonstiges
18.03.2024	57.382	Bremse Sonstiges; Bremsklötze vorne; Bremsscheiben + Klötze v; Bremsscheiben vorne; Reparatur Sonstiges
27.11.2023	42.618	Motoröl b. Wartung; Ölfilter ern; Regelwartungsdienst; Wartung Sonstiges