

» Overview

Order number: 1002401333
Order completed: 09.04.2026 13:13
Report number: 10391426
VIN: VSSZZZKJ8RR099472



Front Left 3/4



Rear Right 3/4



Mileage

» Vehicle Data

| | |
|------------------------------|----------------|
| Vehicle category: | Passenger Car |
| Vehicle type: | SmallCar |
| Make: | Seat |
| Model: | Arona |
| Manufacturers and type code: | 7593 / ANH |
| Date of first registration: | 19.03.2024 |
| Mileage: | 24,316 km |
| Proof of mileage: | ReadOff |
| Exterior colour: | "Candy" Weiss |
| Roof colour: | "Candy" Weiss |
| Propulsion: | Front |
| Fuel: | Petrol |
| Engine size (cc): | 1,000 ccm |
| Performance: | 85 kW (116 PS) |
| Length: | |
| Height: | |
| Width: | |
| Permitted total weight: | |
| Wheelbase: | |
| Number of powered axles: | 2 |
| Cylinders: | 3 |
| Euronorm: | Euro 6 |
| Number of doors: | 4 |
| Number of seats: | 5 |
| Gearbox: | Manual 6-speed |
| Upholstery type: | Lining fabrics |
| Interior colour: | Titanschwarz |
| Number of keys: | 2 |

» Documents & Maintenance

| | |
|-------------------------------------|--------------|
| Statutory inspection date: | 03.2027 |
| Registration certificate available: | Yes |
| Registration certificate received: | Yes |
| License plate: | None |
| Maintenance book: | Digital |
| Maintenance: | Not testable |
| Maintenance last date: | |
| Maintenance last mileage: | |

| | |
|--|---|
| "Standard Plus" version | Dynamic headlight range control (self-adjusting while driving) |
| 18-inch alloy wheels "Performance" 20/4, machined, Cosmo Gray | ECO function |
| 2 reading lights in front | Electronic differential lock XDS, dynamic traction support |
| 3-cylinder gasoline engine 1.0 l/85 kW, TSI base engine: TJ4, "TSI" | Electronic immobilizer |
| 3-cylinder SI engine 1.0 l unit 05C.B | Electronic stability control (ESC) |
| 3-point seat belt in center, rear | Emblems |
| 3-point seat belt in front with electric seat belt pretensioner | Emission standard, WLTP3 M1, N1-I/EU6EA |
| 3-point seat belts, outer rear | Equipment options subset for Germany |
| 4 doors | Extended and proactive pedestrian and cyclist protection |
| 6-speed manual transmission "M6" | Exterior mirror housings and various add-on parts in body color |
| Activated carbon canister (Evaporative Emission Control System (EVAP)) | Exterior mirrors, power-folding/adjustment, heated |
| Advanced driver attention & drowsiness monitor | External, USB type C, only data socket(s) |
| Airbag on driver and front passenger side, without knee airbag, with front passenger airbag deactivation | Forward collision warning incl. autonomous emergency braking, without adaptive cruise control |
| AKEBONO disc brakes in rear | Fresh air intake system with combination filter |
| Alloy wheels 7J x 18 | Front fog lamps |
| Alternator 140 A | Front head restraints |
| Antenna for AM/FM reception, "diversity" | Front stabilizer bar |
| Antifreeze up to -25 degree Celsius tolerance up to -30 degree C | Front-wheel drive |
| Axial and vertical adjustable steering column | Fuel system for fuel-injected SI engine (tropicalized) |
| Battery 320 A (49 Ah) | Gearshift knob/handle in leather |
| BeatsAudio: premium speakers + subwoofer + 300-W amplifier | Hand brake lever handle in leather |
| Breakaway interior rearview mirror, auto-dimming | Hatchback |
| Carrier frequency 433.92 MHz-434.42 Mhz | Heat-reflecting windshield |
| Central locking w/ radio remote control, interior controls, without SAFELOCK | Heavy-duty rear axle (design 2) |
| Child seat anchors for child seat system ISOFIX | Hill hold assist |
| Chrome package | Initial standard fuel filling |
| Climatronic with impact pressure control, CFC-free | In-plant control of self-collection |
| Comfort seats in front | Installation differentiation for transmission MQ 200_GA -- vehicle components -- |
| Control of series production | Instrument cluster, km/h speedometer |
| Cruise control system and speed limiter | Interior ambient lighting, type 1 |
| Custom package: IBIZA Carbon package | Interior light in footwell in front and rear |
| Customized installation | Inventory control model 4 |
| Decorative inserts | Lane keeping system |
| Digital Cockpit | Leather-wrapped multi-function sports steering wheel |
| Digital radio reception | LED headlamps with lens |
| Disc brakes in front (Geomet D) | LED license plate lighting |
| Door and side trim panel in foam film, insert in leatherette | LED rear combination lamp |
| Driving on the right | Left exterior mirror, convex |
| Driving profile selection and hydraulic damper control | Left-hand drive |
| | LongLife Service Regime |

| | |
|--|--|
| Luggage compartment cover, folding | Service indicator 30 000 km or 2 years (variable) |
| Luggage compartment trim (design 2) | Shock absorption in front |
| Luggage pockets on backrest | Side airbag in front with curtain airbag |
| Manual height adjustment for front seats | Side and rear windows in heat-insulating glass |
| Manual in German | Single-tone horn |
| Mobile phone interface | Smaller spare wheel (18-inch) as temporary spare wheel |
| Multi-function display/trip computer active info display "Entry" | Sound system with subwoofer "branded" design 2 |
| Nameplate set | Space-saving spare wheel for temporary use, radial tire (5-hole) |
| Navigation system | Special identification label for EC for M1 passenger vehicles |
| Navigation system - High | Special price |
| No special edition | Special specifications |
| No special purpose vehicle, standard equipment | Sports bumpers |
| Non-smoker's package | Standard air cleaner |
| Not hot country | Standard climatic zones |
| Online service, with OCU, with head unit coding, without engine immobilizer interconnection | Standard dashboard |
| Operating permit, alteration | Standard decorative trims |
| Optional infotainment system (MIB3) | Standard design |
| Pan-European emergency call service | Standard manufacturing sequence |
| Park distance control | Standard paint coating |
| Part set without country-specific prescriptive standard | Standard pedal cluster |
| Power steering | Start-stop system with regenerative braking |
| Power windows with comfort operation and circuit breaker | Sun visors with mirror, airbag label on front passenger sun visor |
| Protective side molding | Suspension range 12 installation control only, no requirement forecast |
| Rear exhaust tailpipe (standard) | Three rear head restraints |
| Rear floor panel module, type 1 | Tire pressure monitoring system |
| Rear fog lamp | Tires 215/40 R18 89W xl |
| Rear overhang, short | Tires without specification of tire brand |
| Rear shock absorption for sports version | Tool kit and jack |
| Rear window wiper and washer system with intermittent control | Top sports equipment |
| Red Color package: Red brake calipers, Red front and rear safety belts (incl. Dual Ride) | Trims for alloy wheels |
| Reduced price package | Type approval country Germany |
| Refrigerant R1234yf | Type sign and company logo |
| Regional code " ECE " for radio | Unsplit molded headliner |
| Right exterior mirror, convex | Unsplit rear seat bench, split folding backrest |
| SEAT CONNECT gen3 - Safety, service, remote access and online infotainment | Variant |
| SEAT Connect Plus - 3 years | Vehicle class differentiation -6F0- |
| SEAT Full LED | Vehicles with special upgrade measures |
| Seat heater for front seats separately controlled | Vent |
| Seat trim covers in fabric | Visual and acoustic seat belt reminder, electric contact in front and rear |
| Seats with velour fabric "Dinámica" | Voice control |
| Separate daytime running light with automatic headlight control and manual Coming and Leaving Home feature | Weight range 8 installation control only, no requirement forecast |

Wheel bolts with anti-theft protection (unlockable) Without washer fluid level indicator

Wheelbase

Windshield wiper intermittent control with light/rain sensor

Winter package 1

Wired & Wireless App-Connect

With dynamic road sign display

With multifunction camera

With UNECE CS (R155) without SU (R156)

Without additional front underbody guard

Without additional noise suppression measures for passenger compartment

Without additional side body covers (stone guard)

Without additional tires

Without alternative drive system

Without applications

Without auxiliary heater/parking heater

Without backrest release for front seats

Without camera systems/accident sensors

Without CD changer/CD player

Without CD/DVD for navigation

Without center armrest in front

Without delivery equipment

Without drawers under front seats

Without extended safety system

Without fire extinguisher

Without first aid kit and warning triangle

Without floor mats

Without headlamp washer system

Without heat accumulator/auxiliary heater

Without heated washer nozzles

Without lane change assist

Without light control

Without luggage/load compartment floor

Without lumbar support in seat backrests

Without mounting fixture in luggage compartment

Without rear spoiler

Without roof insert (standard roof)

Without roof rails/roof load rack

Without second battery

Without special body measures

Without special color trim

Without surface protection, with additional transport protection measures

Without trailer hitch

» Tyres

MOUNTED TYRES

| Make | Location | Position | Type | Rim | Dimensions | Profile depth |
|-------------|----------|----------|--------|-----------|------------------|---------------|
| Continental | Front | Left | Summer | Aluminium | 215/40 R 18 89 W | 5.0 mm |
| Continental | Front | Right | Summer | Aluminium | 215/40 R 18 89 W | 5.0 mm |
| Continental | Rear | Left | Summer | Aluminium | 215/40 R 18 89 W | 6.0 mm |
| Continental | Rear | Right | Summer | Aluminium | 215/40 R 18 89 W | 6.0 mm |

Permitted: Yes**Roadworthy:** Yes**SPARE/EMERGENCY TYRE & ACCESSORIES****Permitted:** Yes**Roadworthy:** Yes**Emergency tyre provided:** Yes**Toolkit present:** Yes**Jack present:** Yes

» Devaluation Factors

| Nr | Location | Damage type | Repair type |
|----|--------------------|---------------------|------------------|
| 1 | Bumper spoiler F | Deformed / Strained | Replace |
| 2 | Electrical circuit | Rodent damage | Replace |
| 3 | Tailgate / Boot | Scratch(es) | Touch up |
| 4 | Door FR | Lettering | Remove lettering |
| 5 | Aerial | Damaged | Replace |

» Usage Damages

The vehicle shows signs of wear consistent with its age, mileage and purpose.

» Commercial devaluation

| | |
|---|-----------------------------------|
| Known previous damages: | No |
| Previous damages detectable: | No |
| Repainting present: | No |
| Paint thickness measurement performed: | Yes - no abnormalities/deviations |

PAINTTHICKNESS MEASUREMENT RESULTS

The measured values were in the usual range.

At least 3 measurements were carried out per component.

» Notes On The Assessment**Details of the assignment and the scope of the assessment:**

The order was placed to prepare a condition report on the described vehicle.

The vehicle condition assessment was carried out in accordance with the order on the basis of the standards for vehicle assessments specified by the client. The expert makes the findings in the individual case on the basis of his own expertise and at his own expert discretion.

Vehicle identification:

VSSZZZKJ8RR099472

VIN checked and matches documentation

Vehicle condition:

Well maintained general condition

Inspection condition:

Sufficient, Insufficient light conditions

Lifting platform/lifting equipment used:

Yes

Testdrive carried out:

No

Engine test carried out:

Yes

» **Remarks**

This copy was generated electronically. It is valid without an original signature.

» Commercial Pictures



Front Left 3/4



Front Right 3/4



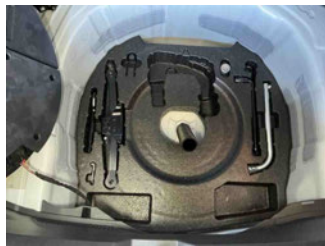
Rear Left 3/4



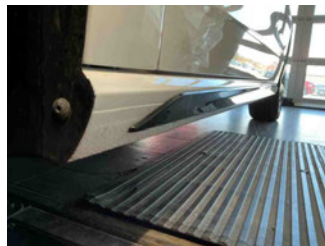
Rear Right 3/4



Mileage



Tools



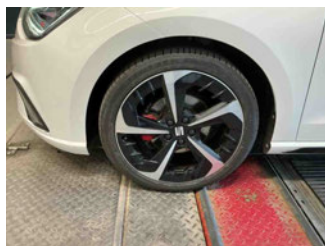
Sill outer L



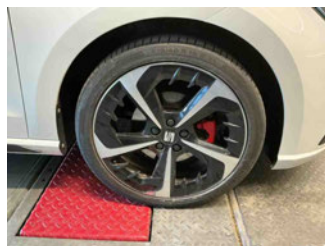
Sill outer R



Chassis nr



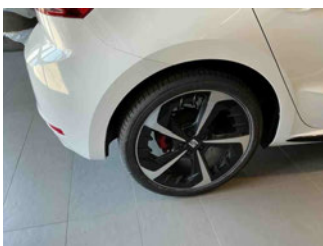
Wheel FL



Wheel FR



Wheel RL



Wheel RR



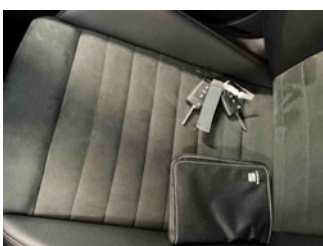
Spare wheel



Central console



Engine compartment



Documents



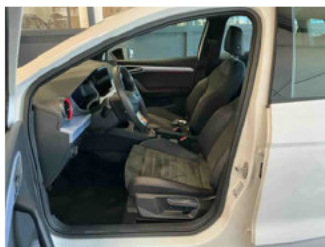
Interior arrangement



Registration Certificate



History Maintenance



Interior - front



Interior - rear



GPS/Radio

» Devaluation Damages

DEVALUATION FACTORS

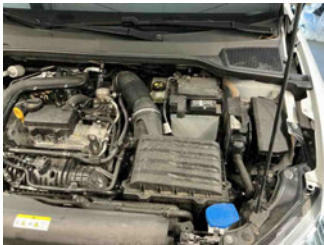
1 - Bumper spoiler F - Deformed / Strained - Replace



2 - Electrical circuit - Rodent damage - Replace

Comment

Batteriepluskabel Marderverbiss- erneuern



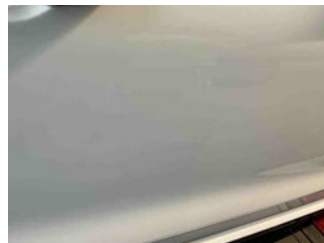
3 - Tailgate / Boot - Scratch(es) - Touch up



4 - Door FR - Lettering - Remove lettering

Comment

Rückstände entfernen



5 - Aerial - Damaged - Replace

Comment

Antennenstab Marderverbiss - erneuern

