

Expertise

Protocol number: 46193357
Order No. / Reference: 26544793
Inspection date: 26 Jun 2026

Manufacturer: Mercedes-Benz

Model: C 220 d T 9G-TRONIC AMG Line

VIN: W1KAH0EB3PF086697



Vehicle details

Manufacturer / Type / Model / Equipment

Mercedes-Benz C 220 d T 9G-TRONIC AMG Line

Vehicle Identification number	W1KAH0EB3PF086697
Mileage (Read)	157,573 km
First registration	1 Dec 2022
Number of holders	1
Next periodical technical inspection (Report on hand)	12/2027

Power / Engine displacement	147 kw / 1,993 ccm
Fuel type / Cylinder	Hybrid Diesel / E / 4
Gearbox / Number of gears	Automatic / 9
Type of drive	Rear drive
Type of vehicle	Station wagon

Colour / colour code	GRAPHITGRAU - METALLICLACK
Doors / Seats	5 / 5
Upholstery type	Alcantara / Leather
Colour of upholstery	Black-Anthracite



Vehicle details

Maintenance booklet / proof	digital proof / complete	Next maintenance in	340 Tag(e)
Last service on / at	05/2026 at 156,661 km		
Key is / should be	2 / 2	FZG documents	ZB#2 (B) was available (copy), ZB#1 (S) was not available.
		Letter No.	GM990569
Previous damage / Accident	Detectable	Repainting	Detectable
Inspection conditions	sufficient	Lifting equipment / pit	yes
Test drive	Not performed	Engine function test	Performed
Manufacturer key number/ type code number	2222 / AYH 00205		
Emission standard	EURO6;WLTP;AP;PI/CI; M, N1 I	fine dust sticker	
Permitted total weight	2,400 kg	Empty weight	

Tyres

Mounted tyres

#	Tyre size	Type of tyre	Manufacturer	Tread depth
1)	225/45 R18 95Y	Summer tyres on Light alloy	Goodyear	4mm / 4mm
2)	245/40 R18 97Y	Summer tyres on Light alloy	Goodyear	4mm / 4mm

Legend: Tread depth information for the left tire is listed first, for the right tire it is listed second on the axle in the direction of travel.



Equipment

Standard equipment

- Airbag for driver and front passenger
- Airbag: Center airbag
- Airbag: Windowbag for driver and front passenger
- AMG floor mats
- Left and right exterior mirrors are heated and electrically adjustable
- Brake system with larger brake discs on the front axle
- black roof rails
- Double cup holder at the front
- EASY-PACK tailgate
- Electronic Stability Program (ESP)
- Electric windows (4-way)
- Transmission: 9-speed automatic, 9G-TRONIC
- Heated rear window
- Instrument panel and door sills in ARTICO man-made leather in black nappa look
- Mechanical child safety lock for the rear doors
- Rear headrests (3)
- Cargo area cover including EASY-PACK safety net
- Steering wheel: Multifunction sports steering wheel in Nappa leather
- Package: Storage
- Upholstery: ARTICO leatherette/MICROCUT microfiber
- Radio accessories: Communication module (LTE) for using Mercedes me connect services
- Remote Services Plus
- Windscreen wipers with rain sensor
- Seats: Rear seat backrests foldable
- Cruise control
- Electronic immobilizer
- Decorative elements, metal structure
- Airbag: Automatic passenger airbag deactivation
- Airbag: Side airbag for driver and front passenger
- Ambient lighting with 64 light colors
- AMG sports pedal assembly made of brushed stainless steel with rubber studs
- Basic services
- Brake assist, active
- Diesel particulate filter
- DYNAMIC SELECT
- ECO start/stop function
- Chassis: Sport chassis with sport direct steering
- Speed Limit Assistant
- rear window wiper
- Interior headliner fabric crystal grey
- ISOFIX child seat attachment with top tether in the rear
- KEYLESS-GO start function
- THERMATIC automatic climate control with 1 climate zone
- Front headrests
- LED High Performance Headlights
- Mercedes-Benz emergency call system
- Center console in high-gloss black
- Package: Interior lighting package
- Radio accessories: Digital radio (DAB)
- Radio accessories: Central display
- Tire pressure monitoring system (TPMS)
- Wheels: 45.7 cm (18") AMG light-alloy wheels in a 5-spoke design
- Lane Keeping Assist, active
- High-visibility vest for drivers
- Central locking with remote control



Extra equipment

- Ambient lighting with 64 light colors (with directly illuminated light lines.)
- Head-up display
- THERMATIC automatic climate control with 2 climate zones (control via the central display or the climate control unit in the center console; sensor system for detecting, for example, indoor/outdoor temperature, sunlight, humidity, and dew point; automatic recirculation (only in conjunction with navigation system); ventilation system consisting of: 3 center vents and 2 side vents; fine dust activated carbon filter for filtering dust, soot, and pollen; dew point sensor; residual heat function for efficient use of engine waste heat)
- Package: Advanced Comfort Package (Heated seats for driver and front passenger - Seat Comfort Package: - Numerous electric and manual adjustment options for the front seats to adapt to the specific body and comfort requirements of the driver and front passenger - Electro-pneumatic 4-way lumbar support and lateral support adjustment with control element on the seat - Electric seat cushion tilt adjustment - Electric height adjustment - Electric backrest adjustment - Electric seat cushion depth adjustment - Mechanical longitudinal adjustment - Mechanical headrest adjustment)
- Package: Luggage compartment comfort (electrically folding rear seat backrests via switches on the right and left in the control panel in the load compartment - electric opening and closing of the load compartment roller blind - 12V socket on the left in the control panel in the load compartment - reversible mat, with a rubberized, non-slip side and a soft velour side)
- Package: Parking (12 ultrasonic sensors - reversing camera - Active Parking Assist with PARKTRONIC: detects free parking spaces, assisted parking, visual and acoustic warning, display of camera and ultrasonic data in the media display - Cross traffic warning: can provide visual and acoustic warnings when reversing out of a parking space and, if necessary, automatically initiate emergency braking - Reverse maneuvering brake: can trigger a braking process - Drive-away assist)
- Radio accessories: Advanced sound system (with 9 speakers and 225 watts system power)
- Wheels: 45.7 cm (18") AMG light-alloy wheels in 5-spoke design (aerodynamically optimized, painted black and high-sheen finish with front axle 225/45 R 18 on 7.5 J x 18 ET 40, rear axle 245/40 R 18 on 8.5 J x 18 ET 52)
- Type designation removed from trunk lid
- Heat-insulating dark tinted glass
- Decorative elements in diamond pattern, silver-grey
- Chassis: AGILITY CONTROL chassis with selective damping system and lowered suspension
- Black fabric headliner
- Fuel tank with larger capacity
- Paint finish: Metallic
- Package: Advanced Infotainment Package (MBUX Navigation Premium (hard drive navigation, pre-installation for Live Traffic Information), Traffic Sign Assist, Smartphone Integration (connects the mobile phone wirelessly to the multimedia system via Apple CarPlay and Android Auto), Wireless charging system for mobile devices in the front, Driver display - 31.2 cm (12.3") color LCD display, Central display - 30.2 cm (11.9") touch display with LCD technology)
- Package: Driving Assistance (Active Distance Assist DISTRONIC, Active Speed Limit Assist, Extended Automatic Restart on Highways, Route-Based Speed Adaptation with Traffic Jam End Function, Active Traffic Jam Assist, Active Steering Assist, Active Lane Change Assist, Active Emergency Stop Assist, Emergency Lane Function, Active Brake Assist with Vehicle, Bicycle and Pedestrian Detection; Intersection Function, Turn Function, Traffic Jam End Emergency Braking Function, Evasive Steering Assist, Active Lane Keeping Assist, Active Blind Spot Assist, Exit Warning Function)
- Package: Night (for T-Model with AMG Line exterior) (Radiator grille: diamond grille with silver pins and high-gloss black louvre (18") AMG light-alloy wheels in 5-spoke design, aerodynamically optimized, black-painted, high-sheen finish, with front axle 225/45 R18 on 7.5Jx18 ET40, rear axle 245/40 R18 on 8Jx18 ET52 AMG front apron with high-gloss black wing trim. Rear bumper with high-gloss black wing trim. Belt trim strip and window surrounds in high-gloss black. Exterior mirror housings in high-gloss black. Heat-insulating dark-tinted rear glass (from the B-pillar). Roof rails in black.)
- Package: Mirror package (both exterior mirrors electrically folding (button in the driver's door control panel) - interior mirror and exterior mirror on the driver's side automatically dimming continuously - ambient lighting of the exterior mirror to illuminate the entry area with projection of the Mercedes-Benz logo)
- Seats: Sports seats
- Telephone accessories: Wireless charging system for mobile devices (wireless charging according to Qi standard for compatible mobile phones - fast connection setup between multimedia system and mobile phone via Near Field Communication (NFC) for identification of the mobile device - storage compartment for wireless charging is located in the storage compartment at the front of the center console)



Brief expert findings

Documents submitted	At the time of the inspection, the vehicle registration certificate Part 2 (title) was available, but the vehicle registration certificate Part 1 (document) was not. (Copy)
VIN comparison	The vehicle identification number (VIN) was read from the vehicle and its conformity with the submitted documents was confirmed by the undersigned during the inspection.
Inspection	The inspection conditions were sufficient for the assessment of the vehicle. Lifting equipment and/or a pit were available for examining the vehicle.
Test drive	No test drive/shunting maneuver was carried out during the inspection of the vehicle.
Engine function test	An engine test run was performed.

Value reducing factors

No.	Component group	Description
1	Side panel - rear right side	Side panel - dent(s) - Smooth repair work
2	Side panel - rear left side	Side panel - dent(s) - Smooth repair work
3	Door - front left side	Door edge - Scratch(es) - Smart repair
4	Wheel / tyres	Alloy rim - rear left side - Scratched - Loss in value
5	Wheel / tyres	Alloy rim - rear right side - Scratched - Loss in value
6	Front bumper	Front bumper - Scratched - Smart repair
7	Mudguard - right side	Mudguard - right side - Scratch(es) - Paint
8	Door - rear right side	Door - Scratch(es) - Paint
9	Door - front right side	Door - Scratch(es) - Paint
10	Rear bumper	Rear bumper - Scratched - Paint
11	Bonnet	Bonnet - Stone chips - Paint
12	Boot lid / rear door	Boot lid - Deformed - Repair and paint

Wear and tear

No.	Component group	Description
1	Body	Underbody panelling - Scratched - No deduction
2	Vehicle glazing	Windscreen - Stone chips - No deduction

The vehicle shows signs of wear and tear commensurate with its age and use.

Previous damages

No.	Previous damage	Extent of damage (Net)
1	Front, Provided by user / customer, from 4 Mar 2025	1.534,69 €
2	Front, Side right, Provided by user / customer, from 28 Aug 2024	8.169,32 €

Repainting

No.	Repainting
1	Side panel - rear right side, Door - rear right side, Professionally carried out, Invoice of repair done Non-existent



Order/Scope of Order

An order was placed to prepare a sales report for the described vehicle. This report includes the following:

- Description of key vehicle information
- Documentation of equipment features
(Delivery by third-party service providers)
- Documentation of damage, defects, missing parts
- Documentation of prior damage, unrepaired prior damage, repainting
- A brief visual or functional inspection of the equipment details, if possible.
(Functional testing of driver assistance systems is not included in the scope of services!)
- a photographic documentation of the vehicle

Basis for the order

This product is based on the guidelines for vehicle returns and valuations published by Alphabet Fleet GmbH. The expert makes the specific findings in each individual case objectively, within the framework of the prescribed standards, based on their own expertise.

The vehicle inspection takes place in a fully assembled, unassembled state.

Damage or defects that can only be detected during disassembly/diagnostic work or through further investigation remain within the realm of prognostic risk. An increased risk exists due to concealed defects caused by fraudulent misrepresentation and which were not identifiable by the expert.

Damage or defects resulting from normal use or wear and tear of the vehicle will be accepted in accordance with the applicable standard.

There was no explicit identification or monetary consideration of the expected features within the product.

Features which, in their nature and extent, slightly exceed normal use but do not constitute unacceptable damage, will be documented and indicated as signs of wear, if applicable.

Damage or defects that, according to the applicable standard, can no longer be attributed to normal use or wear and tear are listed under "Value Reducing Factors" in the product description.

Depending on the product specification, a monetary ID can be provided. If this takes place, the costs can be 100% or pro rata depending on the vehicle's age and mileage.

Previous damages

According to available information previous damages were repaired at the vehicle. Traces of repairs, which allow conclusions about the area of repair, were not recognizable during the inspection.



Figure 1: Diagonal front (left)



Figure 2: Diagonal front (right)



Figure 3: Diagonal rear (left)



Figure 4: Diagonal rear (right)



Figure 5: Interior - front



Figure 6: Interior - rear



Figure 7: Instrument cluster



Figure 8: Instrument panel



Figure 9: Interior 360° view



Figure 10: Cargo area

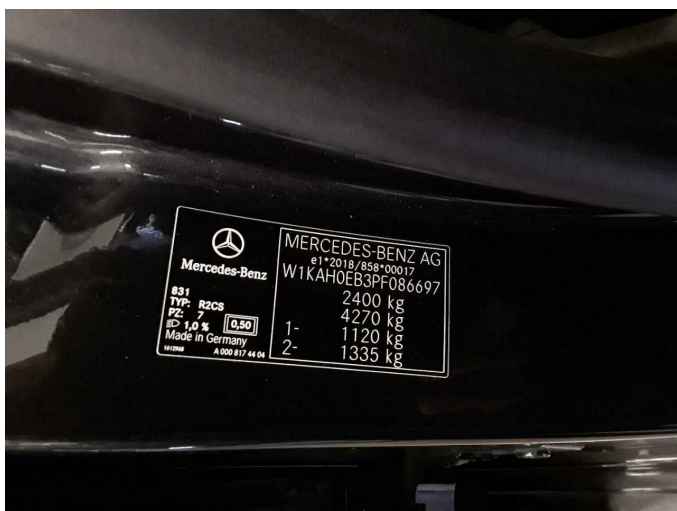


Figure 11: VIN



Figure 12: Mounted tyres



Figure 13: Documents

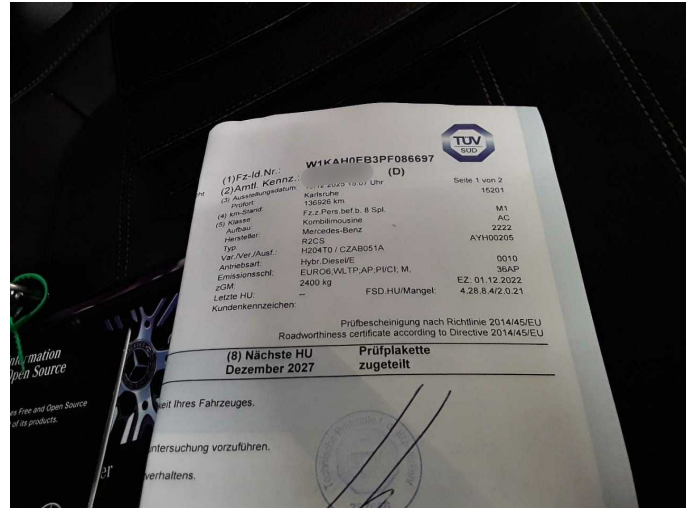


Figure 14: Documents

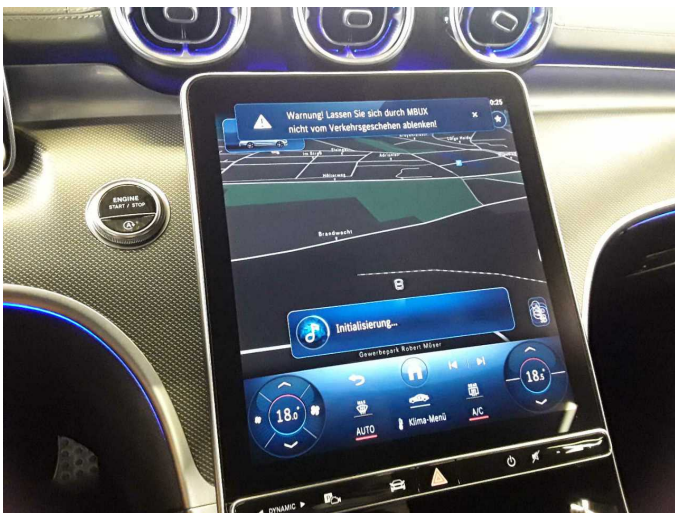


Figure 15: Navigation



Figure 16: Misc.

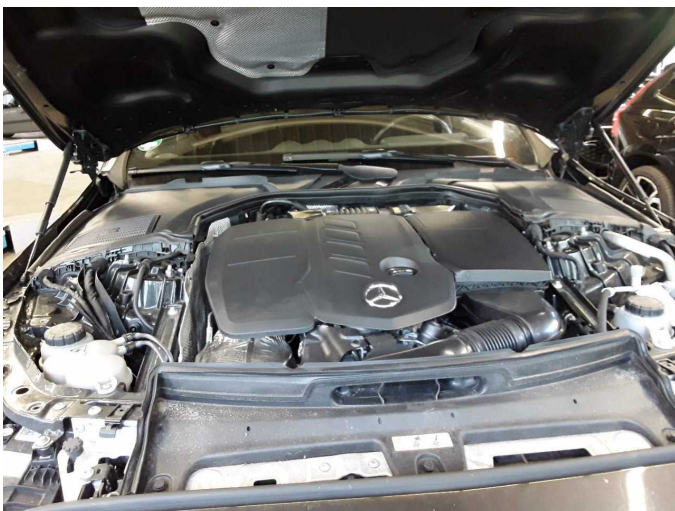


Figure 17: Misc.



Figure 18: Misc.



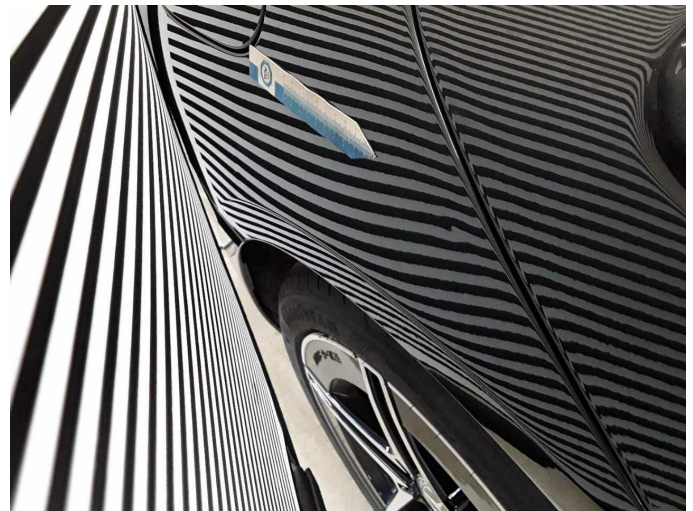
Figure 19: Misc.



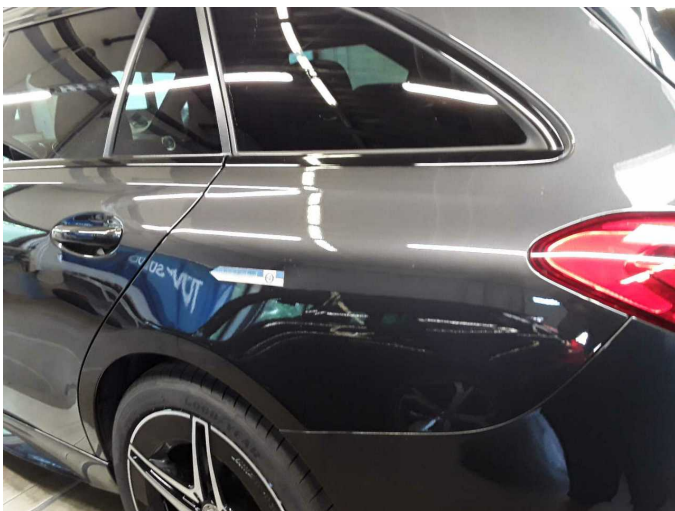
Figure 20: Misc.



Damage 1: Side panel - rear right side: Side panel - dent(s) - Smooth repair work



Damage 1: Side panel - rear right side: Side panel - dent(s) - Smooth repair work



Damage 2: Side panel - rear left side: Side panel - dent(s) - Smooth repair work



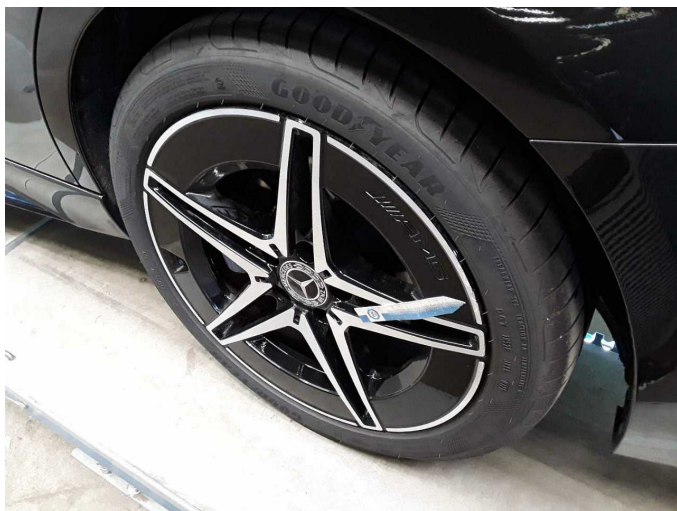
Damage 2: Side panel - rear left side: Side panel - dent(s) - Smooth repair work



Damage 3: Door - front left side: Door edge - Scratch(es) - Smart repair



Damage 3: Door - front left side: Door edge - Scratch(es) - Smart repair



Damage 4: Wheel / tyres: Alloy rim - rear left side - Scratched - Loss in value



Damage 4: Wheel / tyres: Alloy rim - rear left side - Scratched - Loss in value



Damage 5: Wheel / tyres: Alloy rim - rear right side - Scratched - Loss in value



Damage 5: Wheel / tyres: Alloy rim - rear right side - Scratched - Loss in value



Damage 6: Front bumper: Front bumper - Scratched - Smart repair



Damage 6: Front bumper: Front bumper - Scratched - Smart repair



Damage 7: Mudguard - right side: Mudguard - right side - Scratch(es) - Paint



Damage 7: Mudguard - right side: Mudguard - right side - Scratch(es) - Paint



Damage 8: Door - rear right side: Door - Scratch(es) - Paint



Damage 8: Door - rear right side: Door - Scratch(es) - Paint



Damage 9: Door - front right side: Door - Scratch(es) - Paint



Damage 9: Door - front right side: Door - Scratch(es) - Paint



Damage 10: Rear bumper: Rear bumper - Scratched - Paint



Damage 10: Rear bumper: Rear bumper - Scratched - Paint



Damage 10: Rear bumper: Rear bumper - Scratched - Paint



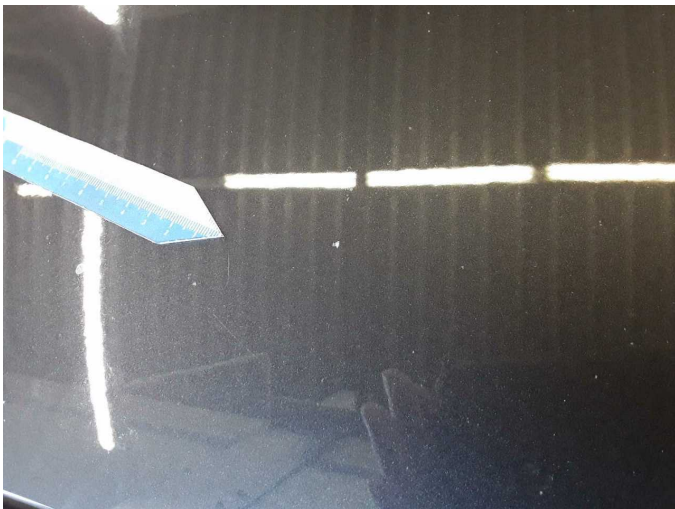
Damage 11: Bonnet: Bonnet - Stone chips - Paint



Damage 11: Bonnet: Bonnet - Stone chips - Paint



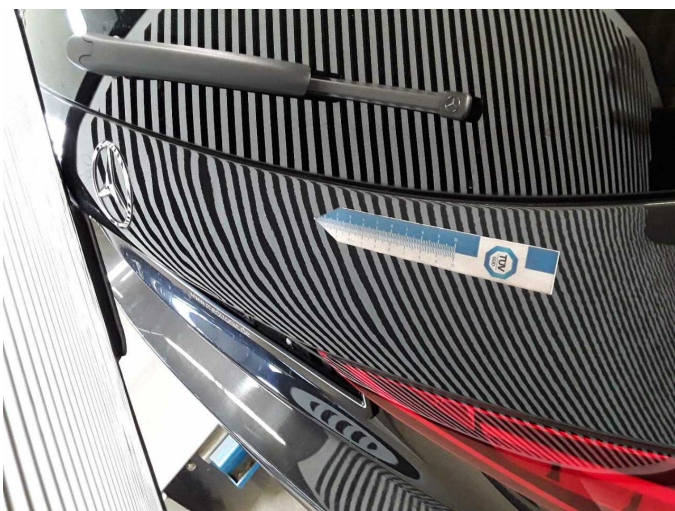
Damage 11: Bonnet: Bonnet - Stone chips - Paint



Damage 11: Bonnet: Bonnet - Stone chips - Paint



Damage 12: Boot lid / rear door: Boot lid - Deformed - Repair and paint



Damage 12: Boot lid / rear door: Boot lid - Deformed - Repair and paint



Repainting 1: Side panel - rear right side, Door - rear right side



Repainting 1: Side panel - rear right side, Door - rear right side



Repainting 1: Side panel - rear right side, Door - rear right side



Repainting 1: Side panel - rear right side, Door - rear right side



Wartungshistorie

(gemäß Auftraggeber Informationen)

Fahrgestellnummer: W1KAH0EB3PF086697

Hersteller / Modell: MERCEDES-BENZ MB C 220 d T 9G-TRONIC AMG Line

Datum	KM-Stand	Beschreibung
22.05.2026	156.661	Bremsscheiben vorne; Regelwartungsdienst
26.01.2026	139.001	Systemtest/Eigendiagnose
27.11.2025	134.223	Bremsscheiben hinten; Regelwartungsdienst
26.06.2025	110.295	Bremsscheiben vorne
03.06.2025	104.995	Systemtest/Eigendiagnose
02.06.2025	104.995	Regelwartungsdienst
29.11.2024	80.460	Regelwartungsdienst
27.06.2024	54.681	Bremsinspektion vo + hi; Regelwartungsdienst
25.08.2023	25.578	Regelwartungsdienst