

## Expertise

Protocol number: 46222283  
Order No. / Reference: 26584187  
Inspection date: 26 Jun 2026

Manufacturer: Mercedes-Benz

Model: C 220 d T 9G-TRONIC Avantgarde

VIN: W1K2062161F020168



### Vehicle details

#### Manufacturer / Type / Model / Equipment

Mercedes-Benz C 220 d T 9G-TRONIC Avantgarde

**Vehicle Identification number** W1K2062161F020168

**Mileage (Read)** 115,694 km

**First registration** 22 Feb 2022

**Number of holders** 2

**Power / Engine displacement** 147 kw / 1,993 ccm

**Fuel type / Cylinder** Hybrid Diesel / E / 4

**Gearbox / Number of gears** Automatic / 9

**Type of drive** Rear drive

**Type of vehicle** Station wagon

**Colour / colour code** SCHWARZ - UNILACK

**Doors / Seats** 5 / 5

**Upholstery type** Cloth / leather combination

**Colour of upholstery** Anthracite-Black



## Vehicle details

<b>Maintenance booklet / proof</b>	digital proof / complete	<b>Next maintenance in</b>	159 Tag(e)
<b>Last service on / at</b>	11/2025 at 102,223 km		
<b>Key is / should be</b>	2 / 2	<b>FZG documents</b>	ZB#2 (B) was available (copy), ZB#1 (S) was not available.
		<b>Letter No.</b>	GF720764
<b>Previous damage / Accident</b>	Detectable	<b>Repainting</b>	None detectable
<b>Inspection conditions</b>	sufficient	<b>Lifting equipment / pit</b>	No
<b>Test drive</b>	Not performed	<b>Engine function test</b>	Performed
<b>Manufacturer key number/ type code number</b>	2222 / AYH 00001		
<b>Emission standard</b>	EURO6;WLTP;AP;PI/CI; M, N1 I	<b>fine dust sticker</b>	
<b>Permitted total weight</b>	2,400 kg	<b>Empty weight</b>	

## Tyres

### Mounted tyres

#	Tyre size	Type of tyre	Manufacturer	Tread depth
1)	225/50 R17 94W	Summer tyres on Light alloy	Michelin	5mm / 5mm
2)	225/50 R17 94W	Summer tyres on Light alloy	Michelin	4mm / 4mm

### Additional tyres

#	Tyre size	Type of tyre	Manufacturer	Tread depth
1)	225/50 R17 98V	Winter tyres on Light alloy	Michelin	8mm / 8mm
2)	225/50 R17 98V	Winter tyres on Light alloy	Michelin	7mm / 7mm

**Legend: Tread depth information for the left tire is listed first, for the right tire it is listed second on the axle in the direction of travel.**

TÜV SÜD Auto Partner GmbH  
Wiesenring 2  
04159 Leipzig

Inspection location  
Hartmann Fleet Professionals GmbH  
Leerenstraße 25  
29683 Bad Fallingbommel



## Equipment



## Standard equipment

- Adaptive Highbeam Assist Plus
- Airbag: Automatic passenger airbag deactivation
- Airbag: Center airbag
- Airbag: Center airbag (Additional airbag for increased front occupant protection in the event of a side impact)
- Airbag: Side airbag for driver and front passenger
- Airbag: Sidebag for driver and front passenger (combined thorax/pelvisbag)
- Airbag: Windowbag for driver and front passenger
- Ambient lighting with 64 light colors
- ATTENTION ASSIST (the attention assistant) (can detect typical signs of fatigue through driver behavior and warn the driver of increasing fatigue or inattentiveness)
- Left and right exterior mirrors are heated and electrically adjustable
- Basic services
- Basic services (breakdown management, maintenance management, accident management, telediagnosis, remote vehicle diagnostics)
- Roof rails in polished aluminum
- Double cup holder at the front
- DYNAMIC SELECT (consisting of driving programs: Comfort, Sport, Eco mode)
- ECO start/stop function
- Illuminated entry sills with Mercedes-Benz lettering
- Electronic Stability Program (ESP) (including Anti-lock Braking System (ABS) and Traction Control System (ASR))
- Driver observation camera
- Chassis: AGILITY CONTROL chassis with selective damping system and lowered suspension
- Pedestrian protection
- Velour floor mats
- Speed Limit Assistant
- Speed Limit Assistant (The Speed Limit Assistant detects and displays speed limits.)
- rear window wiper
- Heated rear window
- ISOFIX child seat attachment with top tether in the rear
- Mechanical child safety lock for the rear doors
- THERMATIC automatic climate control with 2 climate zones (control via the central display or the climate control unit in the center console; sensor system for detecting, for example, indoor/outdoor temperature, sunlight, humidity, and dew point; automatic recirculation (only in conjunction with navigation system); ventilation system consisting of: 3 center vents and 2 side vents; fine dust activated carbon filter for filtering dust, soot, and pollen; dew point sensor; residual heat function for efficient use of engine waste heat)
- Steering wheel: Multifunction sports steering wheel in leather
- Airbag for driver and front passenger
- Airbag: Automatic passenger airbag deactivation (The system automatically deactivates the passenger airbag as soon as it detects a rear-facing child seat or registers that the passenger seat is unoccupied. A transponder in the child seat is not necessary. If it detects that an adult is taking the seat, the airbag is automatically activated, reducing the risk of incorrect operation.)
- Active Distance Assist DISTRONIC
- Ambient lighting with 64 light colors (Directly illuminated trim strip from the sides of the center console across the instrument panel to the door handles of the front and rear doors and the rear side panels - Additional lighting on the air vents and the door center panels and the rear side panels - Four dimming zones (Total, Direct, Ambient and Accent) - Variable brightness setting - 64 colors - Ten color moods - Integrated into the ENERGIZING Comfort Control programs)
- Brake assist, active
- Diesel particulate filter
- DYNAMIC SELECT
- EASY-PACK tailgate
- EASY-PACK tailgate (with electric operation for opening and closing)
- Electronic Stability Program (ESP)
- Driver display (31.2 cm (12.3") color LCD display with a resolution of 2400 x 900 pixels - five different menus with specific content and display styles)
- Electric windows (4-way)
- Fingerprint scanner (Color-illuminated fingerprint scanner in the control bar below the central display - Two fingerprints can be stored per user - Fast access replaces PIN entry - Protects personal data such as profiles as well as office and payment functions)
- Transmission: 9-speed automatic, 9G-TRONIC
- Rear bumper in body color
- Interior headliner fabric crystal grey
- KEYLESS-GO start function
- THERMATIC automatic climate control with 1 climate zone
- Rear headrests (3)
- Front headrests
- Fuel tank with larger volume 66 l
- Paint finish: Solid
- Cargo area cover including EASY-PACK safety net
- LED High Performance Headlights
- LED High Performance headlights (low beam with LED projection technology, high beam with LED reflection technology, daytime running lights, position lights and direction indicators in LED technology, adaptive full-LED taillights with automatic adjustment of light intensity to the surroundings)
- Mercedes-Benz emergency call system



- Steering wheel: Multifunction sports steering wheel in leather (sporty steering wheel in 3-spoke design - leather finish - black grained shift paddles - control via touch panels: left: driver display, cruise control and limiter or active distance assist DISTRONIC; right: MBUX multimedia system (e.g. audio volume and track selection, telephony and navigation), touch sensitivity adjustable via central display)
- Center console in high-gloss black
- Package: Storage
- Package: Storage (Luggage net on the left side panel in the trunk/ cargo area - Elastic tension strap on the right in the cargo area (only for the T-Model) - Folding box under the load floor (not available for plug-in hybrid vehicles) - Double cup holder in the center console for 2 x 750 ml - Map pockets on the back of the front seats)
- Package: AVANTGARDE Exterior
- Package: AVANTGARDE Exterior (radiator grille with integrated Mercedes star and a single chrome louvre as well as chrome grille frame - dynamic front bumper with centrally positioned trim strip in glossy chrome - side window surrounds in polished aluminum - trim on the B-pillars in high-gloss black - bar on the rear side windows in high-gloss black - side sills painted in body color)
- Package: AVANTGARDE Interior (seats with specific seat graphics and redesigned headrests - doors with trim elements in high-gloss black and surrounds in silver chrome as well as switches in silver chrome - overhead control unit in high-gloss black)
- Package: Interior lighting package (Illuminated glove compartment - Lighting for wireless mobile interface or mobile phone storage - Lighting for the storage compartment in the center console or the double cupholder - Lighting for the storage compartment under the armrest of the center console - Two makeup lights in front - Two reading lights in the overhead control unit - Two reading lights and interior light function in the grab handles in the rear - Lighting for the trunk or cargo area)
- Package: Seating comfort (various electric and manual adjustment options for the front seats to adapt to the specific body and comfort requirements of driver and front passenger - electro-pneumatic 4-way lumbar support - electric seat cushion tilt adjustment - electric height adjustment - electric backrest adjustment - electric seat cushion depth adjustment by 6 cm with leg rest pad - mechanical longitudinal adjustment - mechanical headrest adjustment)
- Package: USB (2 USB-C ports under the front center armrest, suitable for data transfer)
- Upholstery: ARTICO leatherette/fabric
- Radio: Extended MBUX functions (personalization (profiles) and prediction functions - MBUX voice assistant with natural language understanding - activation via "Hey Mercedes" - learning function of the MBUX voice assistant by connecting to a cloud-based online dictionary - Wi-Fi hotspot - internet radio)
- Radio accessories: Digital radio (DAB)
- Radio accessories: Communication module (LTE) for using Mercedes me connect services
- Mercedes-Benz Emergency Call System (can provide a crucial time advantage in an emergency. A communication module with its own SIM card automatically triggers an emergency call upon detection of an accident, which can shorten the time until emergency services arrive. The emergency call can also be triggered manually to organize assistance.)
- Navigation: MBUX Navigation Premium (Pre-installation for navigation services - Package (control code) - Multimedia / Digital content - Hard disk navigation - Pre-installation for Live Traffic Information - Communication module (LTE) for the use of Mercedes me connect services)
- Package: AVANTGARDE Advanced Plus (Electrically adjustable driver's seat with memory function: driver and front passenger seats, steering column and exterior mirrors electrically adjustable and storable, seat fore/aft position and headrest height additionally electrically adjustable, 3 memory settings each for driver and front passenger, 4-way lumbar support for driver and front passenger, seat cushion depth adjustment with gapless cushion, PRE-SAFE positioning, blind spot assist, illuminated door sills with "Mercedes-Benz" lettering with interchangeable cover, traffic sign assist, ambient lighting plus)
- Package: Customization Package (Minigames - Vehicle Modes - Sound Experience Soundscapes, only for EQ vehicles with a Burmester surround sound system)
- Package: Interior lighting package
- Package: Luggage compartment comfort (electrically foldable rear seat backrests via switches on the right and left in the control panel in the cargo area - electric opening and closing of the cargo area blind - 12V socket on the left in the control panel in the cargo area)
- Package: Parking package with 360° camera (12 ultrasonic sensors: six each in the front and rear bumpers - 360° camera - Active Parking Assist with PARKTRONIC: detects parking spaces, assisted parking, assisted exiting, visual and acoustic warning of detected obstacles according to distance and position, display of camera and ultrasonic data in the central display, button for Active Parking Assist with PARKTRONIC - cross traffic warning - maneuvering braking - drive-away assist)
- Package: Mirror package (both exterior mirrors electrically folding (button in the driver's door control panel) - interior mirror and exterior mirror on the driver's side automatically dimming continuously - ambient lighting of the exterior mirror to illuminate the entry area with projection of the Mercedes-Benz logo)
- Radio: Extended MBUX functions
- Radio: MBUX
- Radio: MBUX multimedia system (instrument display with 31.2 cm (12.3") diagonal - media display with 30.2 cm (11.9") diagonal and touch function - touch control buttons on the steering wheel - radio (FM/AM) - USB interface in the center console under the armrest - Bluetooth telephony with contact transfer and audio streaming of music files - display of vehicle functions (driver assistance systems, driving programs and vehicle settings) - favorites storage - smartphone-related voice control)



- Radio accessory: Communication module (LTE) for using Mercedes me connect services (The communication module transmits larger data volumes at high speed. Thanks to 5G, your vehicle is ready for the future: for example, through even faster data transmission for communication and streaming or Car-to-X communication.)
- Remote Services (Communication module - Mercedes me services:
  - Programming of auxiliary heating/ventilation: -Remote door locking and unlocking -Sunroof/windows with remote locking and opening including ventilation function -Personalization -Vehicle location
  - Vehicle tracking -Geographic vehicle monitoring -Parking service monitoring -Find function (Remote Vehicle Finder)
- Seats: Rear seat backrests foldable
- Lane Keeping Assist, active
- Telephone accessories: Wireless charging system for mobile devices (wireless charging according to Qi standard for compatible mobile phones - fast connection setup between multimedia system and mobile phone via Near Field Communication (NFC) for identification of the mobile device - storage compartment for wireless charging is located in the storage compartment at the front of the center console)
- Cruise control
- TIREFIT with tire inflation compressor
- Blind Spot Assist
- Pre-installation for DISTRONIC
- Electronic immobilizer
- Central locking with remote control

### Extra equipment

- Towbar with ESP trailer stabilization
- THERMOTRONIC automatic climate control (4-zone automatic climate control: enables individually adjustable climate for driver and front passenger as well as rear seats - climate settings can be controlled via the central display or the climate control unit in the center console - control unit on the back of the center console - automatic recirculation (with navigation) - sensors for detecting, e.g., interior/exterior temperature, ... - fine dust activated carbon filter for filtering dust, soot and pollen - dew point sensors, defroster nozzles under the windshield - residual heat function)
- Package: Winter Package Plus with 43.2 cm (17") winter complete wheels (Winter Package - Winter complete wheels M+S 4-way 43.2 cm (17") light alloy wheels with 10 double-spoke design, vanadium silver painted with 225/50 R17 on 7 J x 17 ET44.5)
- Type designation removed from trunk lid
- Heat and noise insulating acoustic glass
- Heat-insulating dark tinted glass

- Radio accessories: Central display
- Radio accessories: Central display (touchscreen display with LCD technology - 30.2 cm (11.9") screen diagonal - resolution of 1,624 x 1,728 pixels (width x height) - tilted 6° - 7° towards the driver)
- Tire pressure monitoring system (TPMS)
- Remote Services Plus
- Wheels: 43.2 cm (17") light alloy wheels in 5-spoke design (black painted and polished with 225/50 R 17 on 7 J x 17 ET 44.5)
- Windscreen wipers with rain sensor
- Power steering
- Seats: Heated seats for driver and front passenger (Pleasant warmth and therefore high seating and travel comfort. In cooler weather or according to your personal preference, the seat heating quickly brings the seat surfaces and backrests to a comfortable temperature. The intensity can be selected in three levels. Intelligent and convenient: The seat heating switches off automatically.)
- Telephone accessories: Smartphone integration (wirelessly connects the mobile phone to the MBUX multimedia system - display of selected third-party apps - access to current software and data, e.g., for navigation, traffic information, contact data, messaging, telephony, media, IP radio - optimized user interface for driving - control of smartphone functions via voice control)
- High-visibility vest for drivers
- Reversible boot mat in black
- Decorative elements in diamond pattern, silver-grey

- THERMATIC automatic climate control with 2 climate zones
- Fuel tank with larger capacity
- Steering wheel: Multifunction sports steering wheel in ARTICO man-made leather (sporty steering wheel in 3-spoke design - finished in ARTICO man-made leather - steering wheel shift paddles, black grained - control via touch control panels)
- Package: Advanced Comfort Package
- Package: Infotainment Package
- Package: Park
- Package: Mirror package
- Package: USB
- Upholstery: ARTICO man-made leather
- Wheels: 43.2 cm (17") alloy wheels in a 5-spoke design
- Wheels: Complete summer wheel sets fitted at the factory
- Seats: Comfort seats
- Phone accessories: Wireless charging system for mobile devices
- Heat and noise insulating acoustic glass (for windshield and front doors)



## Brief expert findings

Documents submitted	At the time of the inspection, the vehicle registration certificate Part 2 (title) was available, but the vehicle registration certificate Part 1 (document) was not. (Copy)
VIN comparison	The vehicle identification number (VIN) was read from the vehicle and its conformity with the submitted documents was confirmed by the undersigned during the inspection.
Inspection	The inspection conditions were sufficient for the assessment of the vehicle. No lifting equipment or pit was available for inspecting the vehicle. Therefore, inspection of the vehicle's underside was only possible to a limited extent.
Test drive	No test drive/shunting maneuver was carried out during the inspection of the vehicle.
Engine function test	An engine test run was performed.

## Value reducing factors

No.	Component group	Description
1	Side panel - rear right side	Sill - Scratch(es) - Smart repair
2	Side panel - rear left side	Side panel - Scratch(es) - Smart repair
3	Seat - front	Backrest cover - left side - Broken / torn - Smart repair
4	Rear bumper	Rear bumper - Scratch(es) - Smart repair
5	Door - rear left side	Door - Dent / paintcoat damage - Repair and paint
6	Bonnet	Bonnet - Stone chips - Paint
7	Boot lid / rear door	Boot lid - Scratch(es) - Paint
8	Vehicle glazing	Windscreen - Stone chips - repair according to calculation

## Wear and tear

No.	Component group	Description
1	Front bumper	Front bumper - Stone chips - No deduction
2	Door - rear right side	Door handle - outside - Scratch(es) - No deduction
3	Body	C-pillar - right side - Scratch(es) - Smart repair
4	Mudguard - right side	Mudguard - right side - Dent / paintcoat damage - Smart repair
5	Sill - left side	Sill - Scratch(es) - Smart repair
6	Side panel - rear right side	Side panel - Scratch(es) - Smart repair
7	Door - front left side	Door - Dent / paintcoat damage - Smart repair
8	Door - front right side	Door - dent(s) - Smooth repair work
9	Door - front right side	Door edge - Scratch(es) - Smart repair

The vehicle shows signs of wear and tear commensurate with its age and use.

## Previous damages

No.	Previous damage	Extent of damage (Net)
1	Rear, Provided by user / customer, from 15 Jun 2023	1.764,94 €



## Order/Scope of Order

An order was placed to prepare a sales report for the described vehicle. This report includes the following:

- Description of key vehicle information
- Documentation of equipment features  
*(Delivery by third-party service providers)*
- Documentation of damage, defects, missing parts
- Documentation of prior damage, unrepaired prior damage, repainting
- A brief visual or functional inspection of the equipment details, if possible.  
*(Functional testing of driver assistance systems is not included in the scope of services!)*
- a photographic documentation of the vehicle

## Basis for the order

This product is based on the guidelines for vehicle returns and valuations published by Alphabet Fleet GmbH. The expert makes the specific findings in each individual case objectively, within the framework of the prescribed standards, based on their own expertise.

The vehicle inspection takes place in a fully assembled, unassembled state.

Damage or defects that can only be detected during disassembly/diagnostic work or through further investigation remain within the realm of prognostic risk. An increased risk exists due to concealed defects caused by fraudulent misrepresentation and which were not identifiable by the expert.

Damage or defects resulting from normal use or wear and tear of the vehicle will be accepted in accordance with the applicable standard.

There was no explicit identification or monetary consideration of the expected features within the product.

Features which, in their nature and extent, slightly exceed normal use but do not constitute unacceptable damage, will be documented and indicated as signs of wear, if applicable.

Damage or defects that, according to the applicable standard, can no longer be attributed to normal use or wear and tear are listed under "Value Reducing Factors" in the product description.

Depending on the product specification, a monetary ID can be provided. If this takes place, the costs can be 100% or pro rata depending on the vehicle's age and mileage.

## Previous damages

According to available information previous damages were repaired at the vehicle. Traces of repairs, which allow conclusions about the area of repair, were not recognizable during the inspection.



Figure 1: Diagonal front (left)



Figure 2: Diagonal front (right)



Figure 3: Diagonal rear (left)



Figure 4: Diagonal rear (right)



Figure 5: Interior - front



Figure 6: Interior - rear



Figure 7: Instrument cluster



Figure 8: Instrument panel



Figure 9: Interior 360° view



Figure 10: Cargo area



Figure 11: VIN



Figure 12: Mounted tyres



Figure 13: Documents

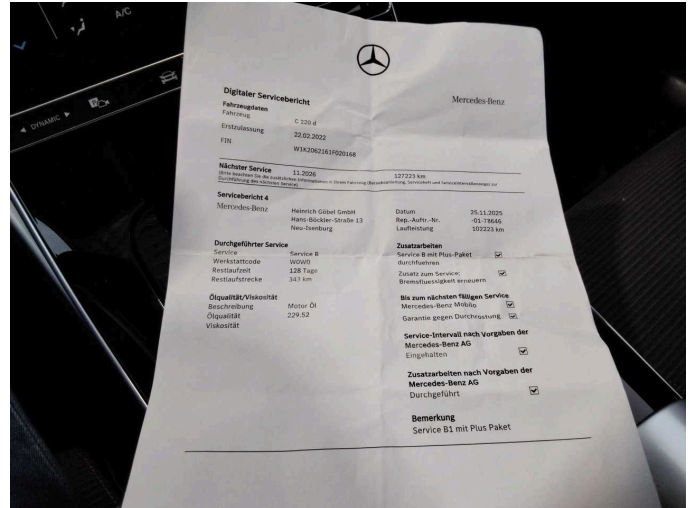


Figure 14: Documents

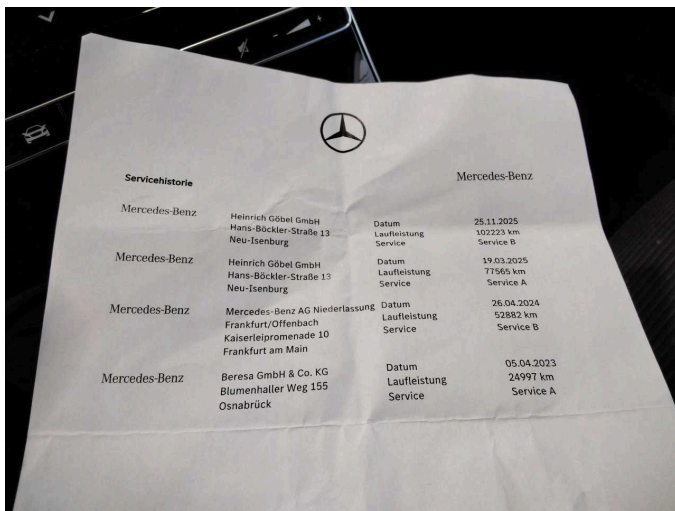


Figure 15: Documents



Figure 16: Additional tyres

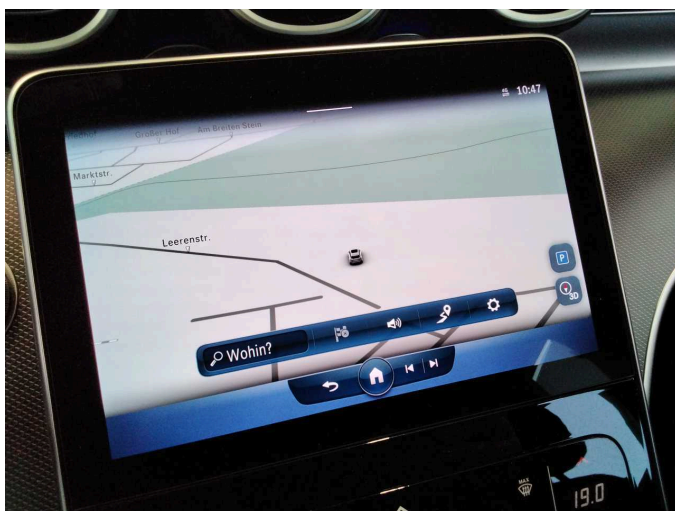


Figure 17: Navigation



Figure 18: Misc.



Figure 19: Misc.

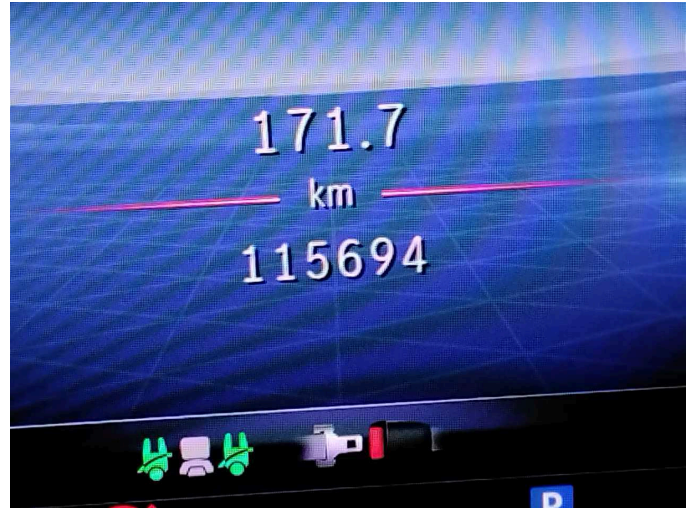


Figure 20: Misc.



Figure 21: Misc.



Figure 22: Misc.



Figure 23: Misc.

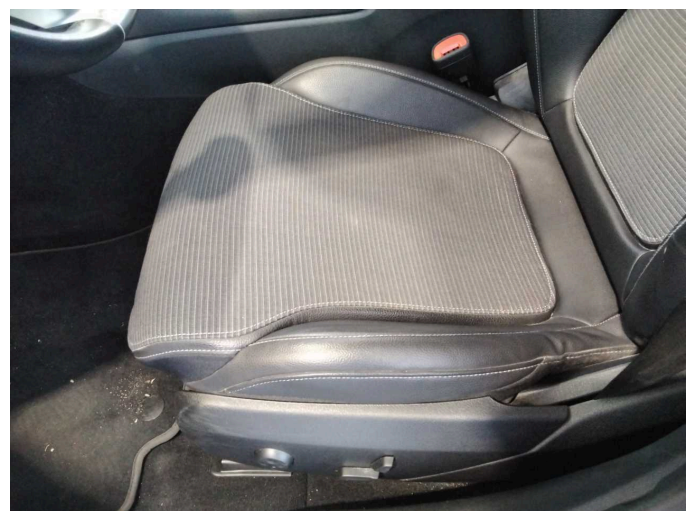


Figure 24: Misc.



Figure 25: Misc.



Figure 26: Misc.



Figure 27: Misc.



Figure 28: Misc.



Figure 29: Misc.



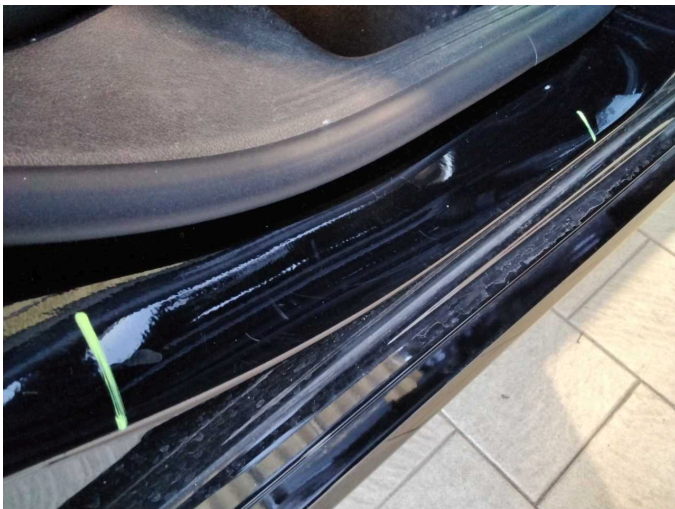
Figure 30: Misc.



Figure 31: Misc.



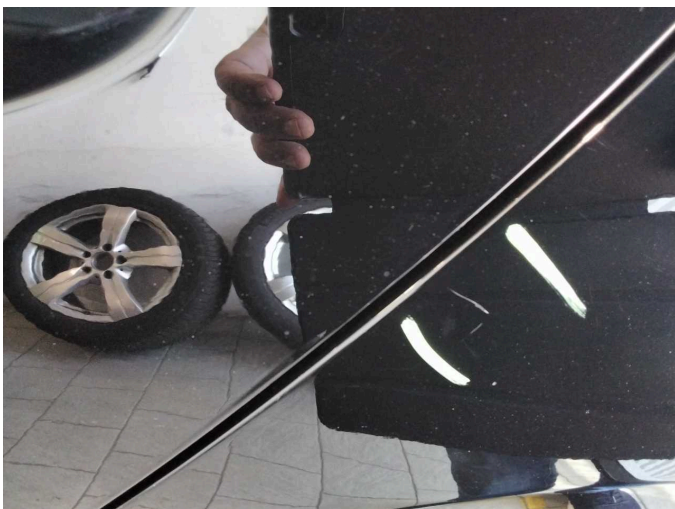
Damage 1: Side panel - rear right side: Sill - Scratch(es) - Smart repair



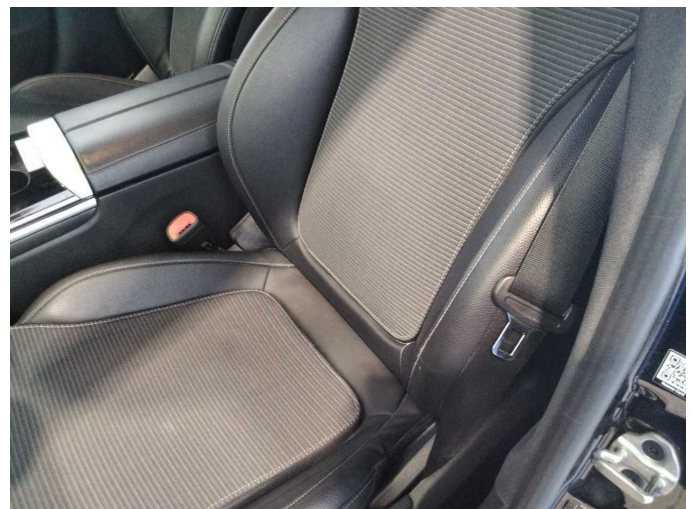
Damage 1: Side panel - rear right side: Sill - Scratch(es) - Smart repair



Damage 2: Side panel - rear left side: Side panel - Scratch(es) - Smart repair



Damage 2: Side panel - rear left side: Side panel - Scratch(es) - Smart repair



Damage 3: Seat - front: Backrest cover - left side - Broken / torn - Smart repair



**Damage 3:** Seat - front: Backrest cover - left side - Broken / torn - Smart repair



**Damage 4:** Rear bumper: Rear bumper - Scratch(es) - Smart repair



**Damage 4:** Rear bumper: Rear bumper - Scratch(es) - Smart repair



**Damage 4:** Rear bumper: Rear bumper - Scratch(es) - Smart repair



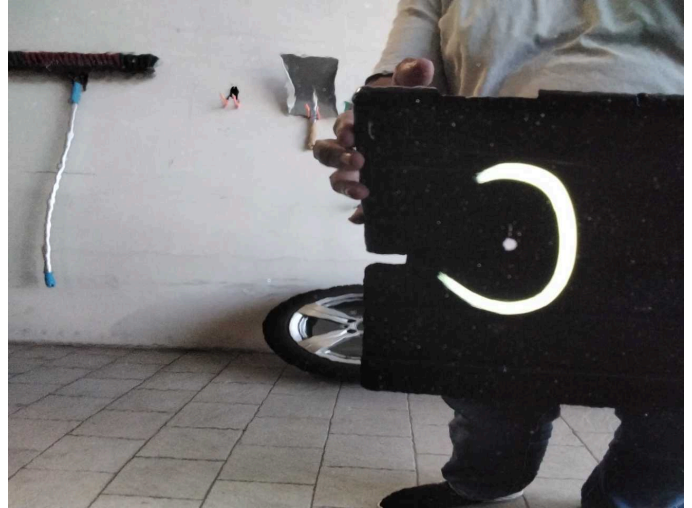
**Damage 4:** Rear bumper: Rear bumper - Scratch(es) - Smart repair



**Damage 4:** Rear bumper: Rear bumper - Scratch(es) - Smart repair



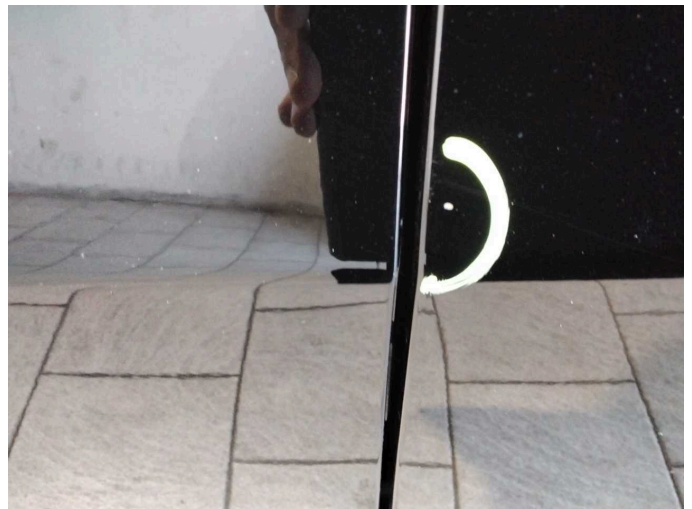
**Damage 5:** Door - rear left side: Door - Dent / paintcoat damage - Repair and paint



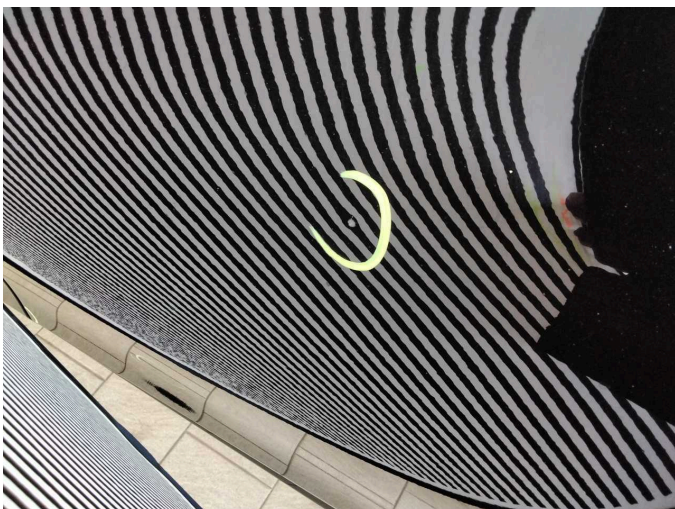
**Damage 5:** Door - rear left side: Door - Dent / paintcoat damage - Repair and paint



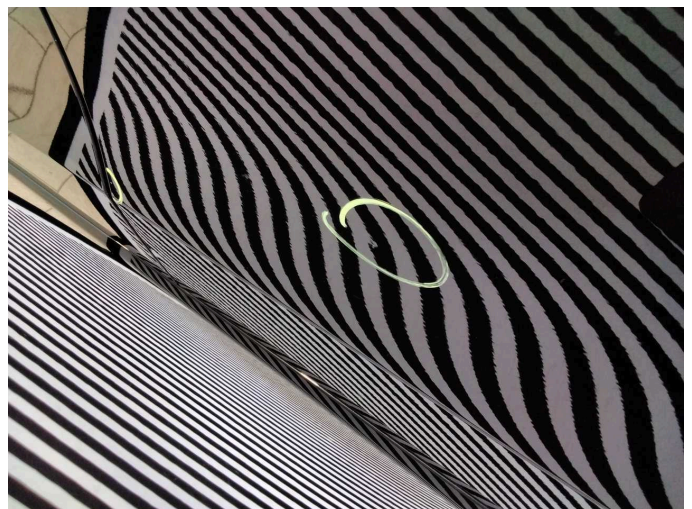
**Damage 5:** Door - rear left side: Door - Dent / paintcoat damage - Repair and paint



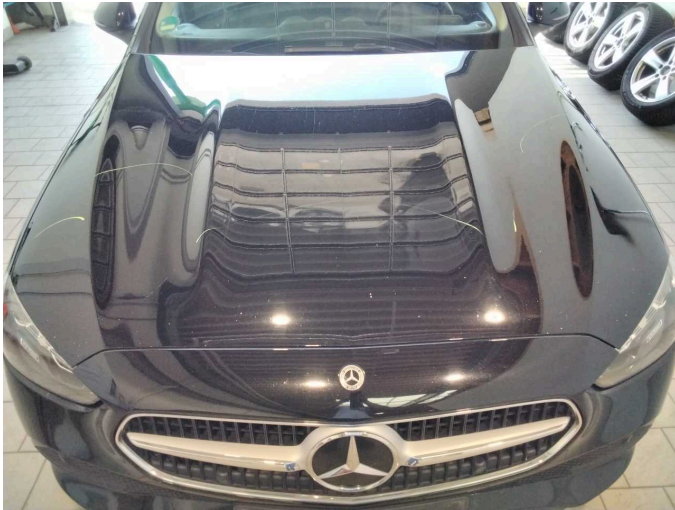
**Damage 5:** Door - rear left side: Door - Dent / paintcoat damage - Repair and paint



**Damage 5:** Door - rear left side: Door - Dent / paintcoat damage - Repair and paint



**Damage 5:** Door - rear left side: Door - Dent / paintcoat damage - Repair and paint



**Damage 6:** Bonnet: Bonnet - Stone chips - Paint



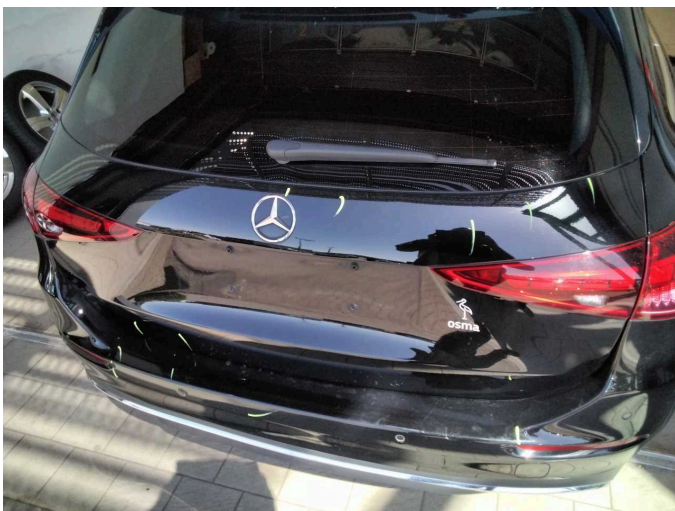
**Damage 6:** Bonnet: Bonnet - Stone chips - Paint



**Damage 6:** Bonnet: Bonnet - Stone chips - Paint



**Damage 6:** Bonnet: Bonnet - Stone chips - Paint



**Damage 7:** Boot lid / rear door: Boot lid - Scratch(es) - Paint



**Damage 7:** Boot lid / rear door: Boot lid - Scratch(es) - Paint



**Damage 7:** Boot lid / rear door: Boot lid - Scratch(es) - Paint



**Damage 7:** Boot lid / rear door: Boot lid - Scratch(es) - Paint



**Damage 8:** Vehicle glazing: Windscreen - Stone chips - repair according to calculation



**Damage 8:** Vehicle glazing: Windscreen - Stone chips - repair according to calculation



**Damage 8:** Vehicle glazing: Windscreen - Stone chips - repair according to calculation



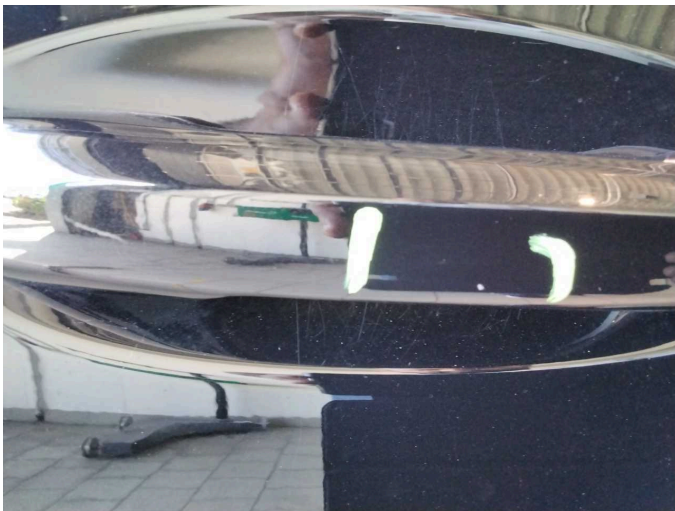
**Damage 8:** Vehicle glazing: Windscreen - Stone chips - repair according to calculation



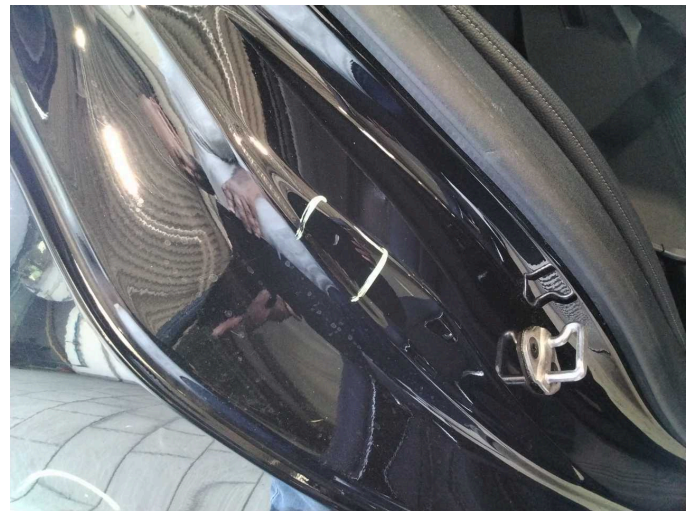
**Wear and tear 1:** Front bumper: Front bumper - Stone chips - No deduction



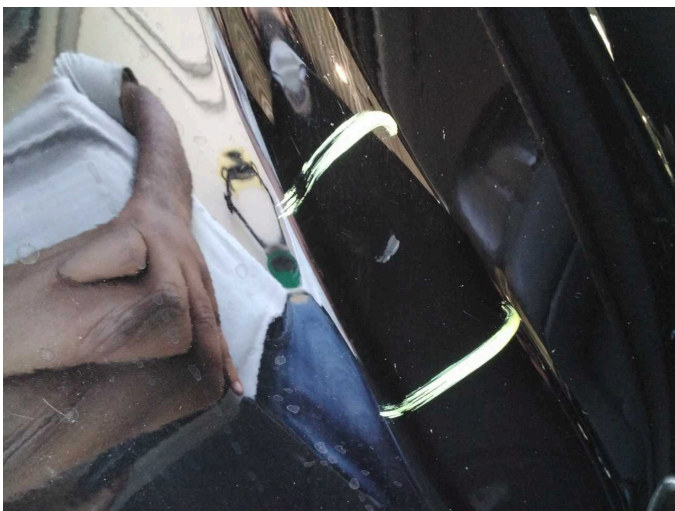
**Wear and tear 2:** Door - rear right side: Door handle - outside - Scratch(es) - No deduction



**Wear and tear 2:** Door - rear right side: Door handle - outside - Scratch(es) - No deduction



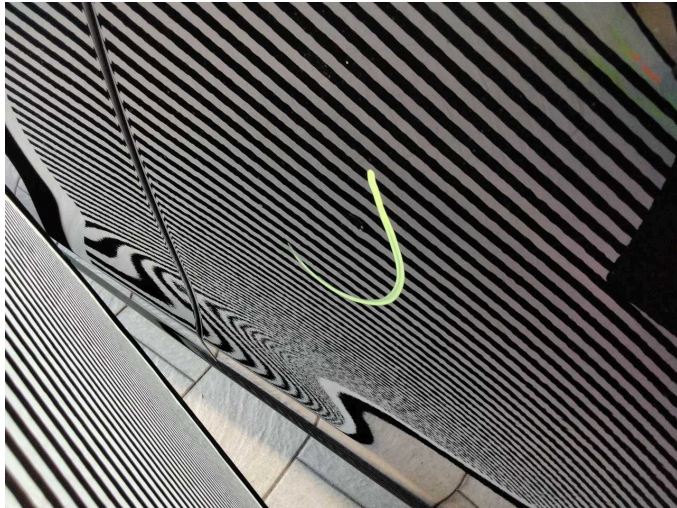
**Wear and tear 3:** Body: C-pillar - right side - Scratch(es) - Smart repair



**Wear and tear 3:** Body: C-pillar - right side - Scratch(es) - Smart repair



**Wear and tear 4:** Mudguard - right side: Mudguard - right side - Dent / paintcoat damage - Smart repair



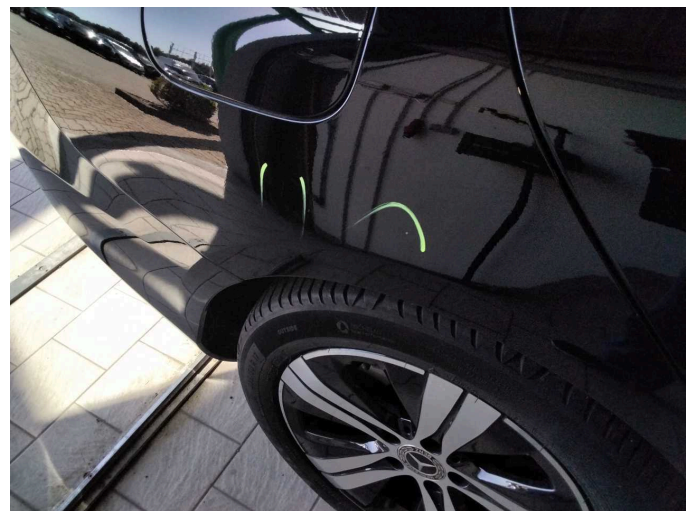
**Wear and tear 4:** Mudguard - right side: Mudguard - right side - Dent / paintcoat damage - Smart repair



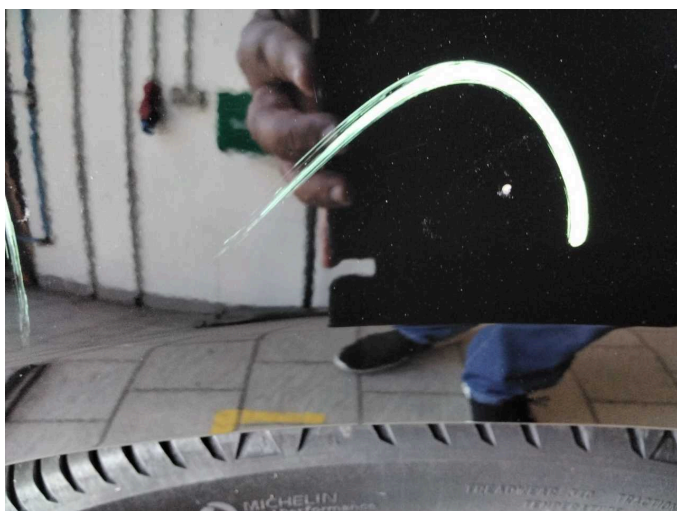
**Wear and tear 5:** Sill - left side: Sill - Scratch(es) - Smart repair



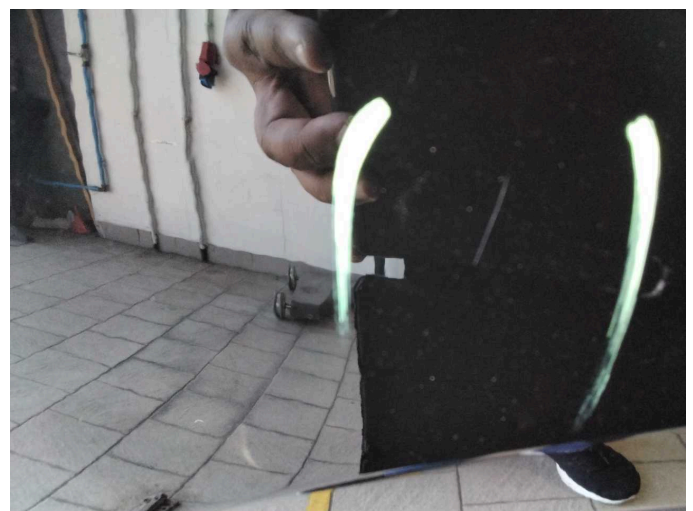
**Wear and tear 5:** Sill - left side: Sill - Scratch(es) - Smart repair



**Wear and tear 6:** Side panel - rear right side: Side panel - Scratch(es) - Smart repair



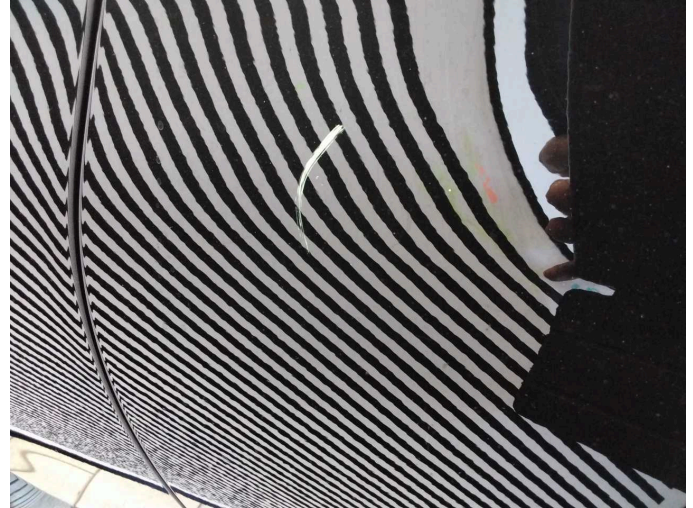
**Wear and tear 6:** Side panel - rear right side: Side panel - Scratch(es) - Smart repair



**Wear and tear 6:** Side panel - rear right side: Side panel - Scratch(es) - Smart repair



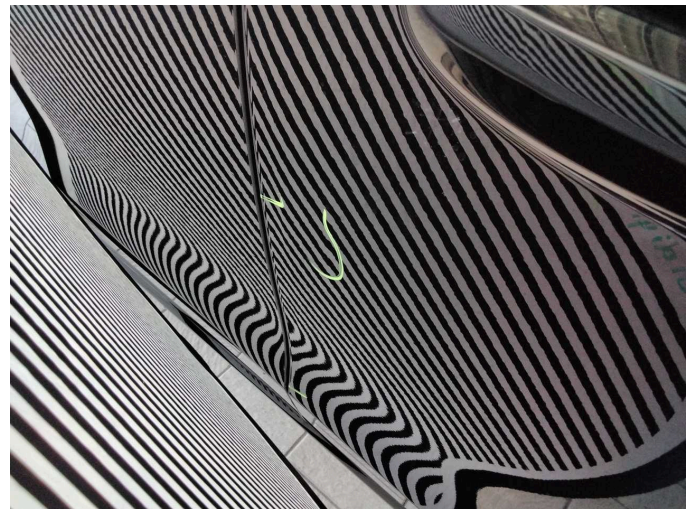
**Wear and tear 7:** Door - front left side: Door - Dent / paintcoat damage - Smart repair



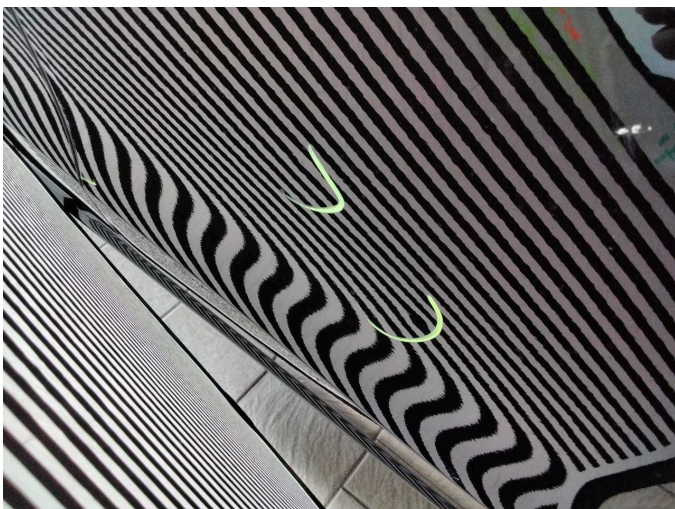
**Wear and tear 7:** Door - front left side: Door - Dent / paintcoat damage - Smart repair



**Wear and tear 8:** Door - front right side: Door - dent(s) - Smooth repair work



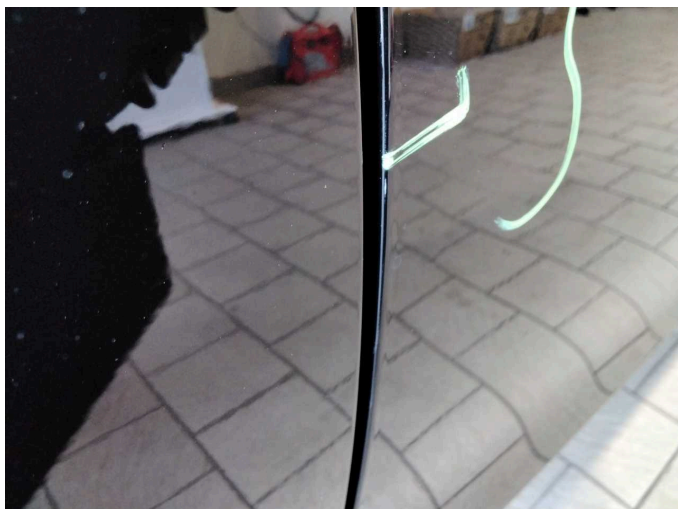
**Wear and tear 8:** Door - front right side: Door - dent(s) - Smooth repair work



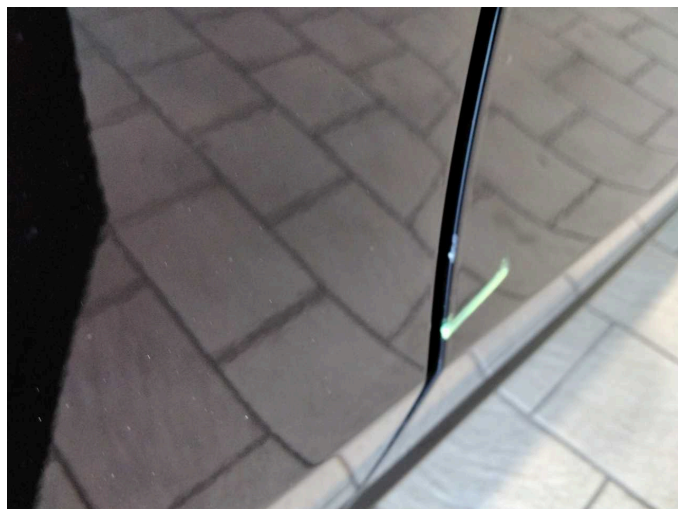
**Wear and tear 8:** Door - front right side: Door - dent(s) - Smooth repair work



**Wear and tear 9:** Door - front right side: Door edge - Scratch(es) - Smart repair



**Wear and tear 9:** Door - front right side: Door edge - Scratch(es) - Smart repair



**Wear and tear 9:** Door - front right side: Door edge - Scratch(es) - Smart repair