

Expertise

Protocol number: 46365044
Order No. / Reference: 26562134-1
Inspection date: 24 Jun 2026

Manufacturer: Audi

Model: A3 30 g-tron Sportback S tronic S line

VIN: WAUZZZGY1RA000624



Vehicle details

Manufacturer / Type / Model / Equipment

Audi A3 30 g-tron Sportback S tronic S line

Vehicle Identification number WAUZZZGY1RA000624

Mileage (Read) 43,276 km

First registration 5 Sept 2023

Number of holders 1

Power / Engine displacement 96 kw / 1,498 ccm

Fuel type / Cylinder Natural gas / 4

Gearbox / Number of gears Automatic / 7

Type of drive Front drive

Type of vehicle Saloon car

Colour / colour code Mythoschwarz Metallic (Y9T)

Doors / Seats 5 / 5

Upholstery type Cloth / leather combination

Colour of upholstery Black-Anthracite



Vehicle details			
Maintenance booklet / proof	digital proof / complete	Next maintenance in	2 Tag(e)
Last service on / at	06/2025 at 30,104 km		
Key is / should be	2 / 2	FZG documents	ZB#2 (B) was available (copy), ZB#1 (S) was not available.
		Letter No.	GV268907
Previous damage / Accident	None detectable	Repainting	None detectable
Inspection conditions	sufficient	Lifting equipment / pit	No
Test drive	Not performed	Engine function test	Performed
Manufacturer key number/ type code number	0588 / BXQ 00080		
Emission standard	EURO6;WLTP;AP;PI/CI; M, N1 I	fine dust sticker	
Permitted total weight	1,885 kg	Empty weight	

Tyres

Mounted tyres				
#	Tyre size	Type of tyre	Manufacturer	Tread depth
1)	205/55 R16 91H	Winter tyres on Light alloy	Pirelli	7mm / 7mm
2)	205/55 R16 91H	Winter tyres on Light alloy	Pirelli	8mm / 8mm
Additional tyres				
#	Tyre size	Type of tyre	Manufacturer	Tread depth
1)	225/40 R18 92Y	Summer tyres on Light alloy	Pirelli	5mm / 5mm
2)	225/40 R18 92Y	Summer tyres on Light alloy	Pirelli	6mm / 6mm
Replacement				
Typ	Tyre size	Type of tyre	Manufacturer	Tread depth
	Tirefit	Expiration date 05/2027		

Legend: Tread depth information for the left tire is listed first, for the right tire it is listed second on the axle in the direction of travel.

TÜV SÜD Auto Partner GmbH
Wiesenring 2
04159 Leipzig

Inspection location
Hartmann Fleet Professionals GmbH
Leerenstraße 25
29683 Bad Fallingbommel



Equipment



Standard equipment

- Airbag for driver and front passenger (with front passenger airbag deactivation)
- Anti-lock braking system (ABS) (with electronic brake force distribution (EBD), hydraulic brake assist)
- Audi pre sense front (within system limits, uses a front radar to detect the area in front of the vehicle and warns the driver with visual and acoustic signals to indicate a potential hazard from vehicles ahead, whether moving or stationary – pedestrian and cyclist detection registers, within system limits, when a pedestrian or cyclist is moving on or crossing the road. The system then warns the driver with an acoustic and visual signal)
- Door sill trims with aluminum inlay at the front, illuminated, with S lettering
- Electric windows front and rear
- Electromechanical parking brake (includes parking brake function when stationary, starting aid by automatic release when starting off and emergency braking function while driving via all four wheels)
- Headliner in steel grey fabric
- Interior lighting (front and rear roof module, including reading lights (incandescent bulbs) - glove box lighting (incandescent bulb) - LED trunk lighting right)
- Lane Departure Warning (within system limits, helps prevent unintentional lane departures. If the system is activated and ready, and the driver has not used the turn signal, the Lane Departure Warning helps prevent crossing detected lane markings by making corrective steering interventions. Additional steering wheel vibration can be set at the driver's request. Operating range from approximately 60 to a maximum of 250 km/h)
- Light and rain sensor
- Manual air conditioning (cools or heats the vehicle interior - air distribution and fan manually adjustable - manual recirculation mode - particle filter - dust and odor separating cabin air filter, which ensures a lower burden of dust particles, odors and allergens in the vehicle interior)
- Non-smoking version (with 12-volt socket and storage compartment)
- Radio: MMI Radio plus (10.1-inch color display (1,540 x 720) including MMI touch operation, digital instrument cluster with 10.25-inch color display, Audi music interface with two USB-C ports, each with data and charging function, Bluetooth interface (hands-free calling and audio streaming), passive speakers with 4 speakers in the front and 2 in the rear (80 watts), AM/FM phase diversity, DAB+ speed-dependent volume adjustment, voice control system for controlling infotainment and vehicle functions, WLAN hardware)
- Rear parking aid (supports reversing and maneuvering within the system limits by acoustically indicating the distance to a detected object behind the vehicle. The measurement is carried out by ultrasonic sensors discreetly integrated into the bumper, which are activated when reverse gear is engaged.)
- rear window wiper
- 12-volt power outlet in the rear
- 12V socket
- 3-point automatic seat belts (3-point automatic seat belts for all seats, pyrotechnic belt tensioners, belt height adjustment at the front, belt force limiters on all outer seats)
- Airbag: Front side airbags with head airbag system and front interaction airbag (In addition to the front side airbags and the head airbags, an interaction airbag is installed at the front, which deploys within the system boundaries between the driver and front passenger seats if required)
- Audi connect Emergency Call & Service with m.connect Remote & Control (The Audi connect Emergency Call & Service services ensure a safe feeling on every journey. - Emergency call - Online breakdown call - Audi damage service - Audi service appointment online Audi connect Remote & Control: - Vehicle status - Remote locking/unlocking - Parking position - Remote control of auxiliary heating - Push notification of anti-theft alarm system)
- Chassis: Standard chassis (Standard comfort chassis with balanced tuning, for very good ride comfort with good driving dynamics.)
- Daytime running light
- Digital instrument cluster - fully digital instrument cluster in 10.25 inches (speed, time, mileage, outside temperature, fuel warning with remaining range, shift indicator (for manual and automatic transmissions in manual mode), current radio station or music track, radio and media lists, classic-style display; if available: telephone menu (in conjunction with multifunction steering wheel), trip computer with short- and long-term memory, fuel-saving tips for more economical driving including break recommendations)
- Electrically adjustable and heated exterior mirrors (with integrated LED indicator lights - left mirror glass aspherical, right convex - including heated windshield washer nozzles)
- Electrically operated child safety lock
- Electromechanical power steering (with speed-dependent steering assistance)
- Electronic Differential Lock (EDS)
- Electronic immobilizer
- Electronic Stability Control (ESC)
- Exterior mirror housings in body color
- Front and rear floor mats (made of velour in black)
- Front headrests
- i-Size child seat attachment and top tether for the outer rear seats
- Rear headrests (3)
- Removable luggage compartment cover
- Seats: Standard front seats (with manual adjustment of seat height, seat longitudinal position, backrest angle, headrest and seatbelt height)
- Speed limiter (assists you in maintaining a constant driving style and adhering to speed limits by adjusting the maximum speed)
- Start-stop system



- Remote key (without Safe-Lock) (locks and unlocks doors, luggage compartment and fuel filler flap - including comfort closing/opening of windows)
 - Roof edge spoiler S
 - Seat covers in fabric (seat center panel in fabric - seat side bolsters, front center armrest (if ordered) and headrests in solid black fabric)
 - Tachometer
 - third brake light
 - Traction control ASR (prevents wheel spin by reducing engine power, thus providing more stability and improved traction on the road)
 - Transmission: S tronic 7-speed
- Steering wheel: Leather steering wheel in a 3-spoke design with multifunction controls and shift paddles (The steering wheel's height and reach are manually adjustable. For convenient operation of the extensive standard and optional infotainment features, the steering wheel is equipped with six multifunction buttons. Shift paddles allow manual gear changes.)
 - Tire pressure monitoring system (visual and audible warning in case of pressure loss in one or more wheels)
 - Tire repair kit (with tire sealant and compressor)



Extra equipment

- Airbags: Front and rear side airbags with head airbag system and front interaction airbag (The so-called interaction airbag deploys between the front seats, providing protection for the driver and front passenger occupants in the event of a side impact within the system's limits. In a side collision, this largely mitigates the impact between the two front occupants and the front passenger seat when driving alone, thus reducing the risk of injury.)
- Hold assist (holds the vehicle after stopping on inclines and declines typical in road traffic for an unlimited time).
- Comfort key in conjunction with anti-theft alarm system (For convenient unlocking of all doors and the tailgate. You only need to carry the comfort key with you, but do not need to actively operate it. When you are in the vehicle, you can start and stop the engine using the engine start/stop button. Includes: Comfort key with Safelock, anti-theft alarm system, deactivatable ultrasonic interior monitoring, tilt sensor warning in case of theft, battery-powered horn to prevent tampering)
- Steering wheel: Leather steering wheel in 3-spoke design with multifunction plus and shift paddles
- Storage and luggage compartment package (lockable glove compartment - storage compartment on driver's side - storage net on the back of the front seatbacks - comfort cupholder - 12-volt socket in the trunk - luggage compartment net - second luggage compartment light on the left in LED (only for A3 Sportback))
- Assistance package with MMI Navigation plus with MMI touch (Audi pre sense front (pedestrian and cyclist detection) - High-beam assistant - Parking assistant with parking aid plus - Adaptive cruise assistant (supports the driver with acceleration, braking, maintaining speed and distance, and lane keeping) - Emergency assistant - Efficiency assistant - Camera-based traffic sign recognition - MMI Navigation plus with MMI touch (10.1-inch color display, natural language interaction, Audi connect Navigation & Info.) - Adaptive cruise control)
- Package: Black Optics Package Plus (Black optics package with Audi rings front and rear and model designation on the rear in black. On the S model, the model designation in the radiator grille is also finished in black)
- Progressive steering (increases driving dynamics and driving comfort through more direct steering response (e.g. on winding country roads or when turning) and reduced steering effort (e.g. when parking and maneuvering); impressive driving characteristics thanks to a steering ratio dependent on the steering angle and speed-dependent steering assistance, adjustable via Audi drive select (auto/comfort/dynamic))
- Wheel: Anti-theft wheel bolts
- Towbar (removable and lockable; ball rod and head made of forged steel, the 13-pin socket can be swivelled invisibly behind the bumper apron, the removed towbar fits in the spare wheel well; including trailer stabilization via the electronic stability control (ESC))
- black roof rails
- Deletion of model designation and performance/technology lettering
- Interior mirror, automatically dimming, frameless
- 2-zone automatic climate control (electronically regulates air temperature, volume and distribution - separate temperature distribution for driver and front passenger side - with sun position-dependent control - automatic recirculation control - dust and odor separating allergen filter - air vents in the rear center console - separate defroster button for faster defrosting of the front and side windows)
- Paint finish: Metallic
- Matrix LED headlights, LED taillights and headlight cleaning system (The matrix LED headlights include: dynamic turn signals, daytime running lights, low beam, high beam, position lights, cornering lights, all-weather lights (to reduce glare in poor visibility conditions), maneuvering lights (illuminating the maneuvering area in front and to the sides when reversing), motorway lights, automatic dynamic headlight range control, static cornering lights (supplementing lateral illumination in tight curves), dynamic light sequence for the coming home/leaving home function.)
- Business package in conjunction with assistance package (USB ports with charging function in the rear - Audi connect Navigation & Infotainment plus - Audi phone box - Audi virtual cockpit plus - Smartphone interface (Android Auto and Apple CarPlay) - MMI Navigation plus with MMI touch - Cruise control)
- S line interior package (S tronic) (front sport seats with manual adjustment of seat height, seat fore/aft position, seat tilt, backrest tilt and seat belt height, as well as headrests; fabric Puls/mono.pur 550-K synthetic leather; 3-spoke leather steering wheel with multifunction plus and shift paddles including leather steering wheel grips; front and rear door armrests in synthetic leather; aluminum spectrum dark decorative inlays; illuminated front door sill trims with aluminum inlays and S lettering; black fabric headliner; front center armrest; stainless steel floor mats, pedals and footrest)
- Wheel: Audi new car tire warranty
- Wheel: On-board tools and jack (in the luggage compartment)
- Wheel: Audi Sport light alloy wheels, 5-arm blade, anthracite black, gloss turned (8.0 J x 18, tires 225/40 R 18)
- Reversing camera (captures the area behind the vehicle within the system limits. The display is adjusted according to the steering angle using dynamic display elements in the MMI touch display. The user can choose between perpendicular parking and trailer modes. Depending on the selected mode, the calculated driving lane or a guide line for coupling a trailer is displayed, also dependent on the steering angle. The reversing camera is activated by engaging reverse gear or via a button in the center console.)



Wear and tear

No.	Component group	Description
1	Vehicle glazing	Windscreen - Stone chips - No deduction
2	Front bumper	Front bumper - Stone chips - No deduction
3	Trim / covers	Boot lid - interior trim - Scratch(es) - No deduction
4	Wheel / tyres	Alloy rim - front right side - Scratch(es) - No deduction

The vehicle shows signs of wear and tear commensurate with its age and use.

Order/Scope of Order

An order was placed to prepare a sales report for the described vehicle. This report includes the following:

- Description of key vehicle information
- Documentation of equipment features
(*Delivery by third-party service providers*)
- Documentation of damage, defects, missing parts
- Documentation of prior damage, unrepaired prior damage, repainting
- A brief visual or functional inspection of the equipment details, if possible.
(*Functional testing of driver assistance systems is not included in the scope of services!*)
- a photographic documentation of the vehicle

Basis for the order

This product is based on the guidelines for vehicle returns and valuations published by Alphabet Fleet GmbH. The expert makes the specific findings in each individual case objectively, within the framework of the prescribed standards, based on their own expertise.

The vehicle inspection takes place in a fully assembled, unassembled state.

Damage or defects that can only be detected during disassembly/diagnostic work or through further investigation remain within the realm of prognostic risk. An increased risk exists due to concealed defects caused by fraudulent misrepresentation and which were not identifiable by the expert.

Damage or defects resulting from normal use or wear and tear of the vehicle will be accepted in accordance with the applicable standard.

There was no explicit identification or monetary consideration of the expected features within the product.

Features which, in their nature and extent, slightly exceed normal use but do not constitute unacceptable damage, will be documented and indicated as signs of wear, if applicable.

Damage or defects that, according to the applicable standard, can no longer be attributed to normal use or wear and tear are listed under "Value Reducing Factors" in the product description.

Depending on the product specification, a monetary ID can be provided. If this takes place, the costs can be 100% d or pro rata depending on the vehicle's age and mileage.

Previous damages

No apparent prior damage that had been repaired could be found on the vehicle.

Comments

-Der montierte Winterradsatz ist kein Bestandteil des Auslieferungsumfangs.



Figure 1: Diagonal front (left)



Figure 2: Diagonal front (right)



Figure 3: Diagonal rear (right)



Figure 4: Interior - front



Figure 5: Interior - rear



Figure 6: Instrument cluster



Figure 7: Instrument panel



Figure 8: Interior 360° view



Figure 9: Cargo area

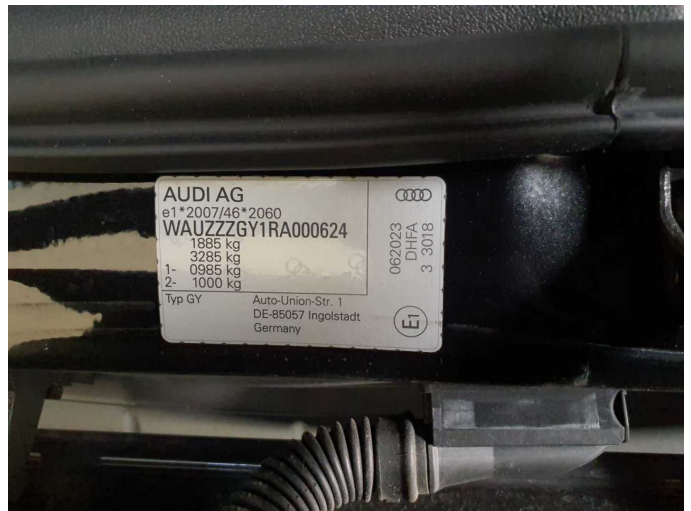


Figure 10: VIN



Figure 11: Mounted tyres

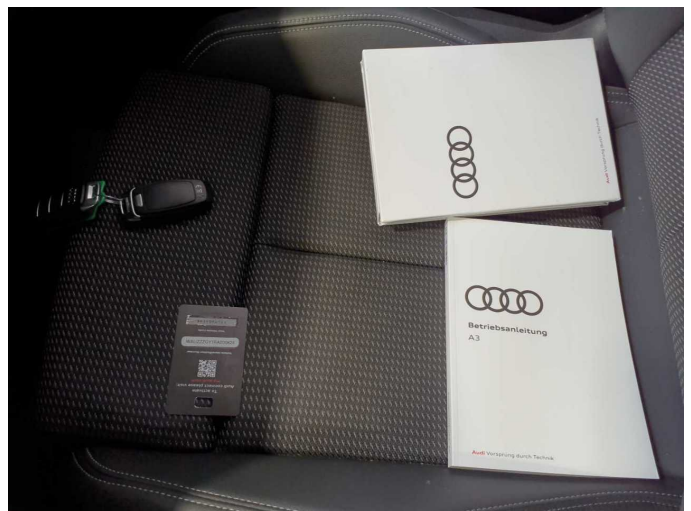


Figure 12: Documents



Figure 13: Additional tyres



Figure 14: Navigation



Figure 15: Misc.



Figure 16: Misc.



Figure 17: Misc.



Figure 18: Misc.



Figure 19: Misc.



Figure 20: Misc.

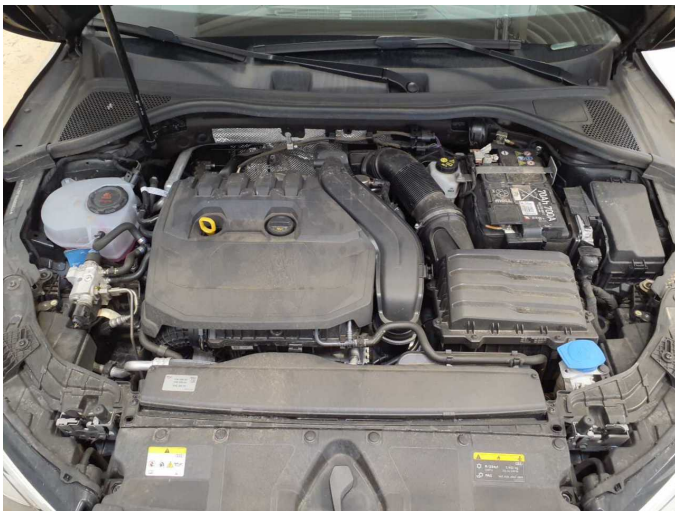


Figure 21: Misc.



Figure 22: Misc.

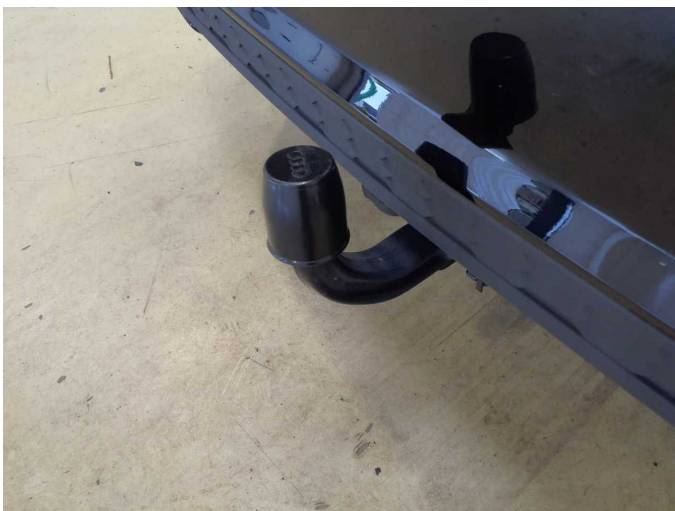


Figure 23: Misc.



Figure 24: Misc.



Figure 25: Misc.



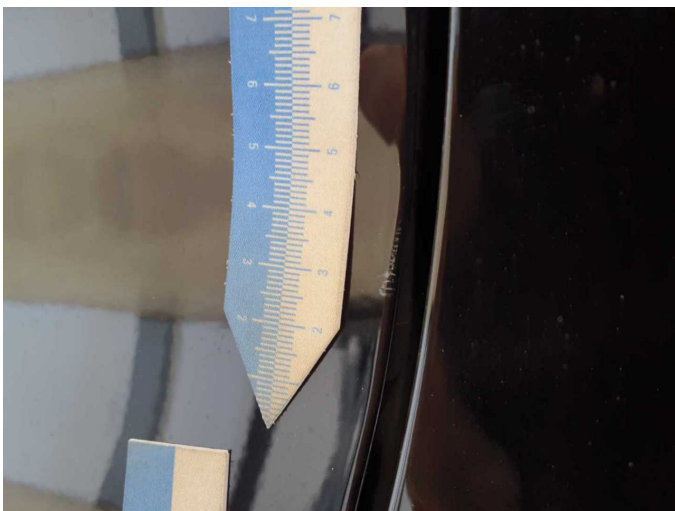
Figure 26: Misc.



Figure 27: Misc.



Damage 1: Door - front left side: Door edge - Scratch(es) - Smart repair



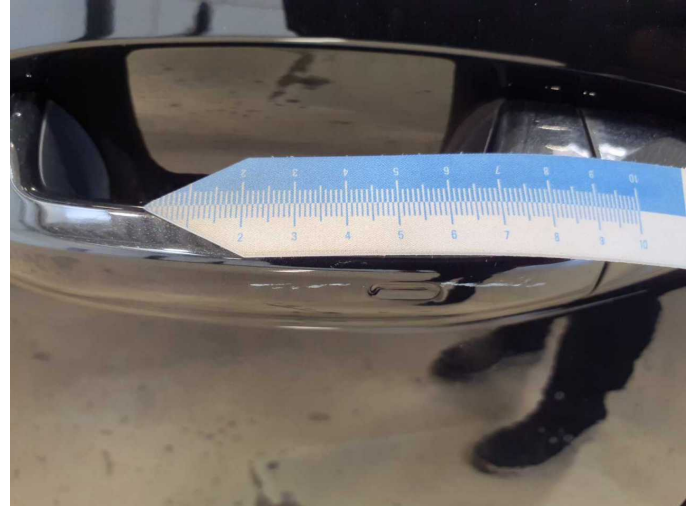
Damage 1: Door - front left side: Door edge - Scratch(es) - Smart repair



Damage 1: Door - front left side: Door edge - Scratch(es) - Smart repair



Damage 2: Door - front left side: Door handle - outside - Scratch(es) - Smooth repair work



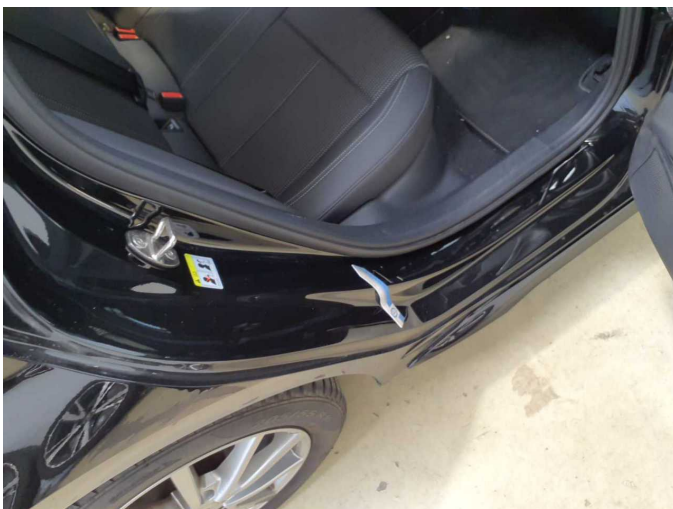
Damage 2: Door - front left side: Door handle - outside - Scratch(es) - Smooth repair work



Damage 3: Door - rear left side: Door - dent(s) - Smart repair



Damage 3: Door - rear left side: Door - dent(s) - Smart repair



Damage 4: Side panel - rear right side: Sill - Scratch(es) - Smart repair



Damage 4: Side panel - rear right side: Sill - Scratch(es) - Smart repair



Damage 5: 2nd wheel set: 1 alloy rim - Scratch(es) - Loss in value



Damage 5: 2nd wheel set: 1 alloy rim - Scratch(es) - Loss in value



Damage 5: 2nd wheel set: 1 alloy rim - Scratch(es) - Loss in value



Damage 6: Trim / covers: Door trim - rear right side - Deformed - Replace



Damage 6: Trim / covers: Door trim - rear right side - Deformed - Replace



Damage 6: Trim / covers: Door trim - rear right side - Deformed - Replace



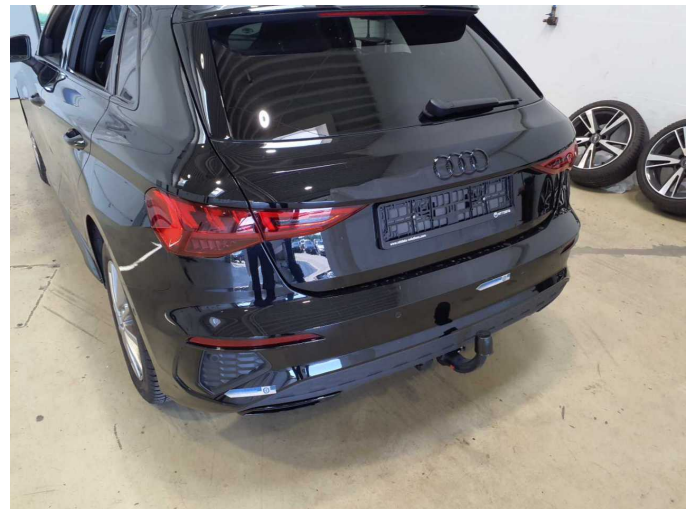
Damage 6: Trim / covers: Door trim - rear right side - Deformed - Replace



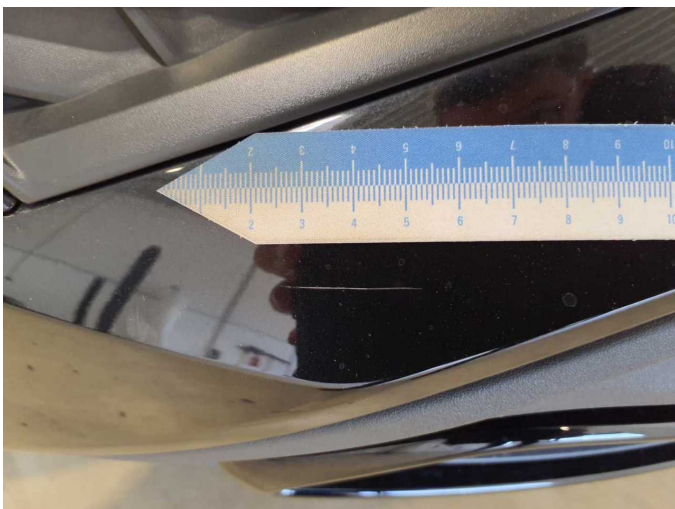
Damage 7: Side panel - rear left side: Side panel - Scratch(es) - Paint



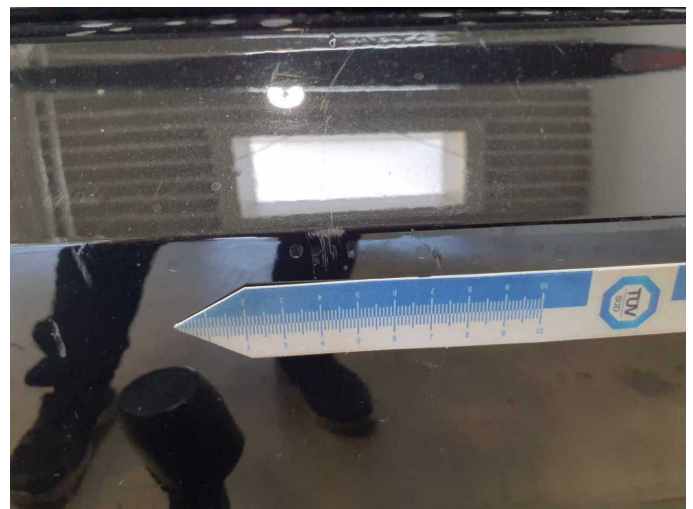
Damage 7: Side panel - rear left side: Side panel - Scratch(es) - Paint



Damage 8: Rear bumper: Rear bumper - Scratch(es) - Paint



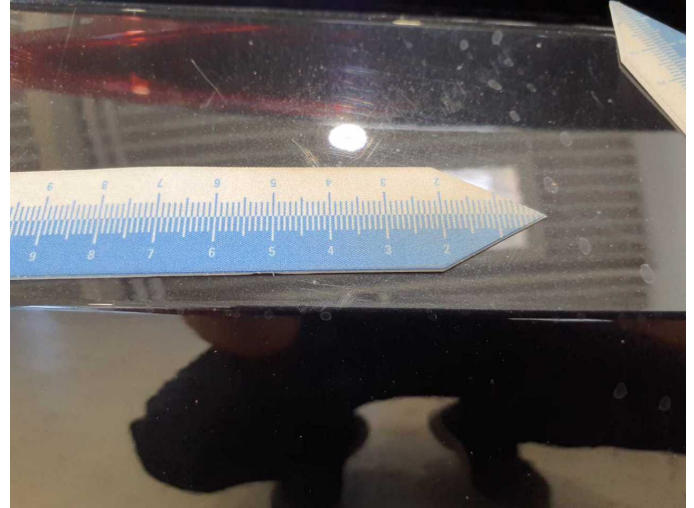
Damage 8: Rear bumper: Rear bumper - Scratch(es) - Paint



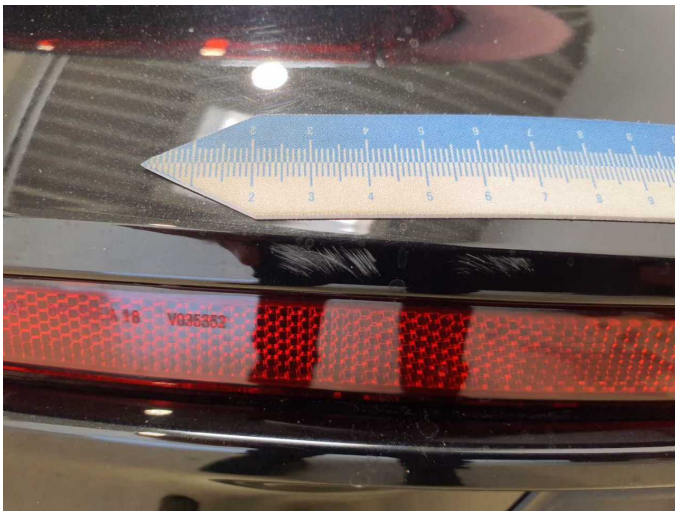
Damage 8: Rear bumper: Rear bumper - Scratch(es) - Paint



Damage 8: Rear bumper: Rear bumper - Scratch(es) - Paint



Damage 8: Rear bumper: Rear bumper - Scratch(es) - Paint



Damage 8: Rear bumper: Rear bumper - Scratch(es) - Paint



Damage 8: Rear bumper: Rear bumper - Scratch(es) - Paint



Damage 8: Rear bumper: Rear bumper - Scratch(es) - Paint