

Expertise

Protocol number: 45828116
Order No. / Reference: 26403127
Inspection date: 27 May 2026

Manufacturer: Peugeot

Model: 5008 BlueHDi 180 EAT8 GT

VIN: VF3MJEHZRLS193973



Vehicle details

Manufacturer / Type / Model / Equipment

Peugeot 5008 BlueHDi 180 EAT8 GT

Vehicle Identification number VF3MJEHZRLS193973

Mileage (Read) 146,649 km

First registration 1 Oct 2020

Number of holders 1

Power / Engine displacement 130 kw / 1,997 ccm

Fuel type / Cylinder Diesel / 4

Gearbox / Number of gears Automatic / 8

Type of drive Front drive

Type of vehicle SUV

Colour / colour code Platinum Grau Metallic

Doors / Seats 5 / 7

Upholstery type Leather

Colour of upholstery Black



Vehicle details			
Maintenance booklet / proof	digital proof / complete	Next maintenance in	26,400 km
Last service on / at	03/2026 at 142,982 km		
Key is / should be	2 / 2	FZG documents	ZB#2 (B) was available (copy), ZB#1 (S) was not available.
		Letter No.	FR252041
Previous damage / Accident	Detectable	Repainting	None detectable
Inspection conditions	sufficient	Lifting equipment / pit	No
Test drive	Not performed	Engine function test	Performed
Manufacturer key number/ type code number	3003 / AZF 00037		
Emission standard	EURO6;WLTP;AM;PI/CI; M, N1 I	fine dust sticker	
Permitted total weight	2,280 kg	Empty weight	

Tyres

Mounted tyres				
#	Tyre size	Type of tyre	Manufacturer	Tread depth
1)	225/55 R18 98H	Winter tyres on Light alloy	Pirelli	5mm / 5mm
2)	225/55 R18 98H	Winter tyres on Light alloy	Pirelli	5mm / 5mm
Additional tyres				
#	Tyre size	Type of tyre	Manufacturer	Tread depth
1)	205/55 R19 97V	Summer tyres on Light alloy	Continental	3mm / 3mm
2)	205/55 R19 97V	Summer tyres on Light alloy	Continental	3mm / 3mm
Replacement				
Typ	Tyre size	Type of tyre	Manufacturer	Tread depth
	Tirefit	Expiration date 06/2025		

Legend: Tread depth information for the left tire is listed first, for the right tire it is listed second on the axle in the direction of travel.

TÜV SÜD Auto Partner GmbH
Wiesenring 2
04159 Leipzig

Inspection location
ARS Altmann AG Automobillogistik
Römerstraße 3
64560 Riedstadt



Equipment



Standard equipment

- ABS (Anti-lock Braking System)
- Airbag for driver and front passenger
- Airbag: Curtain airbags front and rear
- Electrically folding exterior mirrors with LED approach lighting
- Exterior mirror caps Perla Nera Black
- On-board computer
- Chrome trim strips above the side windows
- Black Diamond roof (roof in Perla Nera black)
- Aluminum roof rails
- Trim: Alcantara decorative inserts for door panels and dashboard
- Tachometer
- EBV (Electronic Brakeforce Distribution)
- Front parking aid, acoustic and visual
- Chassis: Sport mode
- Misfueling protection
- High beam assist
- Follow-me-home function (automatic)
- Front bumper in chrome look
- front and rear floor mats
- Transmission: 8-speed automatic transmission EAT8
- Heated rear window
- Interior mirror automatically dimming
- Keyless system
- Folding tables on the front seat backrests
- Front headrests (2)
- Rear headrests (3)
- Blue LED lighting on the door panel and the cup holder
- LED taillights
- "Washington" 19" alloy wheels
- Steering wheel: small multifunction steering wheel, flattened at the top and bottom
- Front center armrest, two-piece, with storage compartment, illuminated and climate-controlled
- Emergency brake assist
- Aluminum pedals and stainless steel door sills
- Radio: Mirror Screen
- Rain sensor
- Tire pressure monitoring system
- Reversing camera with 180° surround view
- Side windows in the second row and rear window are more heavily tinted.
- Seats: Passenger seat height adjustable
- Seats: Ergonomic comfort seats with AGR seal of approval
- Seats: Manual lumbar support, for driver's seat
- Sunshade roller blind, row 2
- Socket (3) 12 Volt
- Traffic sign recognition
- Pre-installation for WEBASTO auxiliary heater
- Central locking system, activatable from inside via remote control
- Active Safety Brake
- Airbag: Front and rear side airbags
- Active Blind Spot Assist
- Electrically adjustable and heated exterior mirrors with integrated LED turn signals
- Hill start assist
- Chrome trim strips on the lower part of the doors
- Chrome trim strips below the side windows
- Black headliner
- Ceiling light at the front, 2 reading lights at the front and ceiling light with delayed shut-off at the rear
- Digital instrument cluster with high-resolution 12.3" screen, adjustable and customizable
- Rear parking aid, acoustic and visual
- ESP (Electronic Stability Program) with ASR (Anti-Slip Regulation)
- Electric windows front and rear
- electric parking brake
- Front collision warning
- Full LED headlights with headlight range control
- Cruise control system with speed limiter
- Seat belts: 3-point safety belts
- rear window wiper
- Map pockets on the front seatbacks
- Child safety locks on the rear doors
- Automatic climate control (2-zone), with activated carbon filter
- LED ambient lighting in the front headliner and front footwell
- LED daytime running lights
- Steering wheel: Multifunction leather steering wheel
- light sensor
- makeup mirror
- Fatigue warning
- Navigation system: 3D navigation system NAC
- Particulate filter: FAP diesel particulate filter
- Peugeot Connect Box
- Radio accessories: Multifunctional touchscreen with 8" color display
- Wheels: Tire repair kit (compressor + tire sealant spray)
- paddle shifters on the steering wheel
- Electric power steering
- Seats: 3 separate individual seats in row 2
- Seats: Passenger seat foldable
- Seats: Driver's seat height adjustable
- Seats: Heated front seats
- Lane keeping assist with steering intervention
- Stop&Start system
- Tie-down points in the trunk (4 pieces)
- Immobiliser



Extra equipment

- Automatic cruise control (ACC) with stop function
- tailgate sensor-controlled
- Inductive charging station including 220 volt socket
- Package: Easy Package (Reversing camera with 360° surround view - Park Assist: Active parking system with automatic steering for parallel and perpendicular parking spaces)
- Radio accessories: Digital radio reception DAB+
- Seats: 2 additional seats for the 3rd row (removable and fully retractable)
- Decorative inlays made of real wood "Grey Oak" for door panels and dashboard
- Paint finish: Metallic
- Package: Full leather package with AGR seal of approval (Upholstery: "Nappa" leather in black - Ergonomic comfort seats - Electrically adjustable driver's seat with memory function - Heated front seats - Massage function for driver and front passenger seats - Extendable thigh support on driver and front passenger side - Electrically adjustable lumbar support on driver and front passenger side - Electrically adjustable seat cushion tilt on the front passenger side)

Brief expert findings

Documents submitted	At the time of the inspection, the vehicle registration certificate Part 2 (title) was available, but the vehicle registration certificate Part 1 (document) was not. (Copy)
VIN comparison	The vehicle identification number (VIN) was read from the vehicle and its conformity with the submitted documents was confirmed by the undersigned during the inspection.
Inspection	The inspection conditions were sufficient for the assessment of the vehicle. No lifting equipment or pit was available for inspecting the vehicle. Therefore, inspection of the vehicle's underside was only possible to a limited extent.
Test drive	No test drive/shunting maneuver was carried out during the inspection of the vehicle.
Engine function test	An engine test run was performed.

Value reducing factors

No.	Component group	Description
1	Equipment	Tirefit filler - Expired - Replace
2	Side panel - rear left side	Side panel - dent(s) - Smooth repair work
3	2nd wheel set	1 tyre (Flankenbeschädigung) - Damaged - Replace
4	2nd wheel set	1 alloy rim - Scratched - Loss in value
5	2nd wheel set	1 alloy rim - Scratched - Loss in value
6	2nd wheel set	1 alloy rim (Großflächig verkratzt) - Scratched - Replace
7	2nd wheel set	1 alloy rim (Großflächig verkratzt / mit Materialabtrag) - Scratched - Replace
8	Front bumper	Front bumper - Scratched - Paint

Wear and tear

No.	Component group	Description
1	Vehicle glazing	Windscreen - Stone chips - No deduction
2	Bonnet	Bonnet - Stone chips - No deduction
3	Rear bumper	Rear bumper - Scratch(es) - No deduction
4	Interior	Interior - Scratch(es) - No deduction

The vehicle shows signs of wear and tear commensurate with its age and use.

Previous damages

No.	Previous damage	Extent of damage (Net)
1	Rear, Side - left, Provided by user / customer, from 17 Nov 2025	1.427,21 €



Accident damages

No. Accident

1 Side right

Order/Scope of Order

An order was placed to prepare a sales report for the described vehicle. This report includes the following:

- Description of key vehicle information
- Documentation of equipment features
(*Delivery by third-party service providers*)
- Documentation of damage, defects, missing parts
- Documentation of prior damage, unrepaired prior damage, repainting
- A brief visual or functional inspection of the equipment details, if possible.
(*Functional testing of driver assistance systems is not included in the scope of services!*)
- a photographic documentation of the vehicle

Basis for the order

This product is based on the guidelines for vehicle returns and valuations published by Alphabet Fleet GmbH. The expert makes the specific findings in each individual case objectively, within the framework of the prescribed standards, based on their own expertise.

The vehicle inspection takes place in a fully assembled, unassembled state.

Damage or defects that can only be detected during disassembly/diagnostic work or through further investigation remain within the realm of prognostic risk. An increased risk exists due to concealed defects caused by fraudulent misrepresentation and which were not identifiable by the expert.

Damage or defects resulting from normal use or wear and tear of the vehicle will be accepted in accordance with the applicable standard.

There was no explicit identification or monetary consideration of the expected features within the product.

Features which, in their nature and extent, slightly exceed normal use but do not constitute unacceptable damage, will be documented and indicated as signs of wear, if applicable.

Damage or defects that, according to the applicable standard, can no longer be attributed to normal use or wear and tear are listed under "Value Reducing Factors" in the product description.

Depending on the product specification, a monetary ID can be provided. If this takes place, the costs can be 100% d or pro rata depending on the vehicle's age and mileage.

Previous damages

Non-repaired previous damages were found at the vehicle. The necessary repair costs are listed in the expert report or if necessary, are listed in detail in a separately enclosed repair cost calculation.

Comments

- Die Unterbodenbesichtigung war nur ebenerdig & eingeschränkt möglich. Mehrkosten möglich.
- Der angegebene Winterradsatz ist kein Bestandteil des Auslieferungsumfangs.
- Ein Nachweis über die Zulässigkeit des montierten Radsatzes wurde nicht erbracht.

Das Fahrzeug befand sich zum Besichtigungszeitpunkt in beschädigtem, nicht demontiertem Zustand. Schadenausweitung möglich, Zusatzkosten können entstehen



Figure 1: Diagonal front (left)



Figure 2: Diagonal front (right)



Figure 3: Diagonal rear (left)



Figure 4: Diagonal rear (right)



Figure 5: Interior - front



Figure 6: Interior - rear



Figure 7: Instrument cluster



Figure 8: Instrument panel



Figure 9: Interior 360° view



Figure 10: Cargo area



Figure 11: VIN

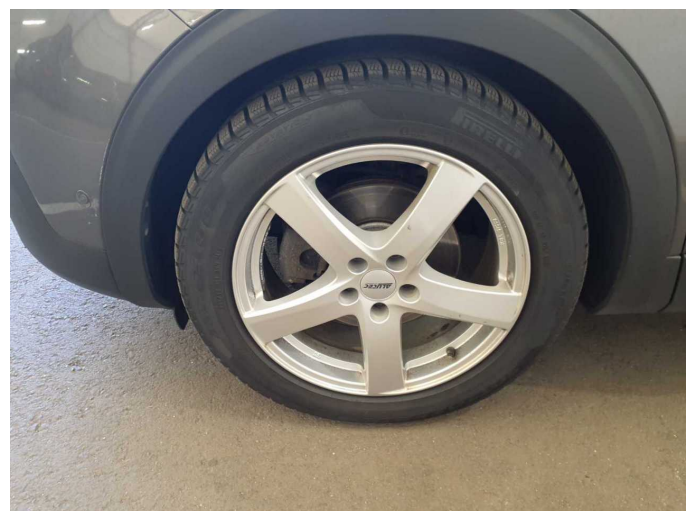


Figure 12: Mounted tyres



Figure 13: Documents



Figure 14: Documents



Figure 15: Additional tyres



Figure 16: Navigation



Figure 17: Misc.



Figure 18: Misc.



Figure 19: Misc.



Figure 20: Misc.



Figure 21: Misc.



Figure 22: Misc.

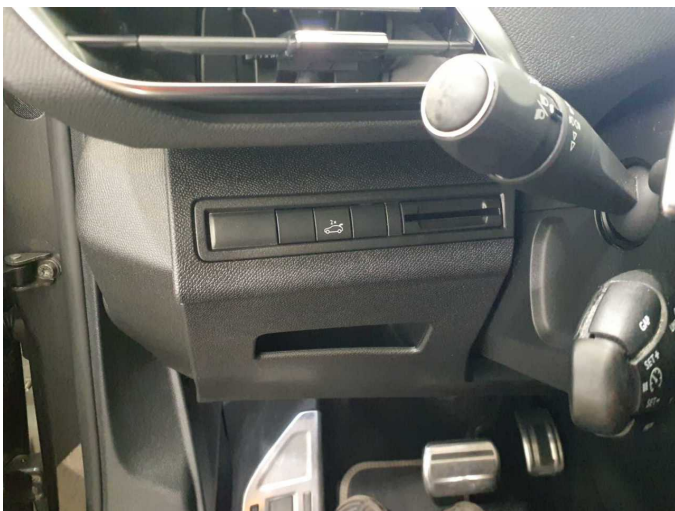


Figure 23: Misc.



Figure 24: Misc.



Figure 25: Misc.



Figure 26: Misc.

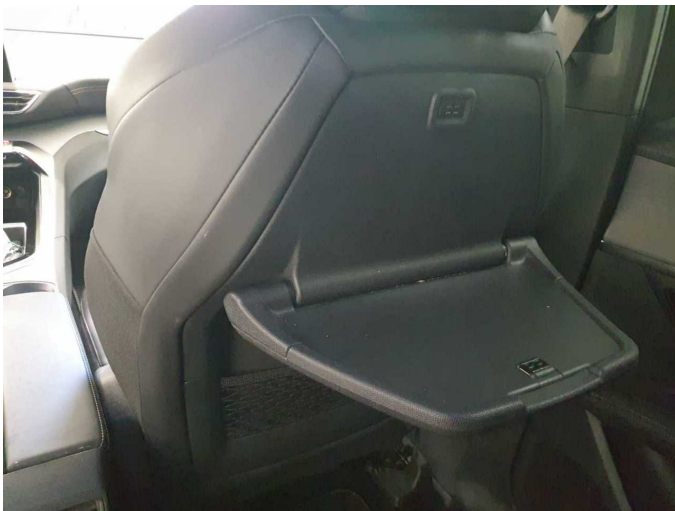


Figure 27: Misc.

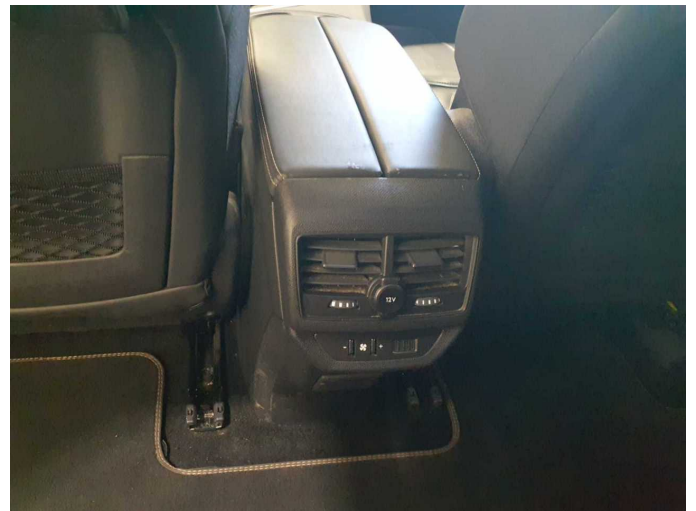


Figure 28: Misc.

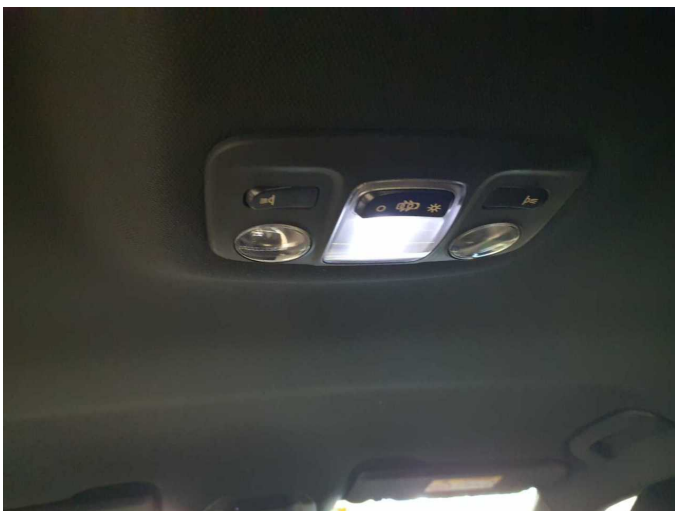


Figure 29: Misc.



Figure 30: Misc.



Figure 31: Misc.



Figure 32: Misc.



Figure 33: Misc.

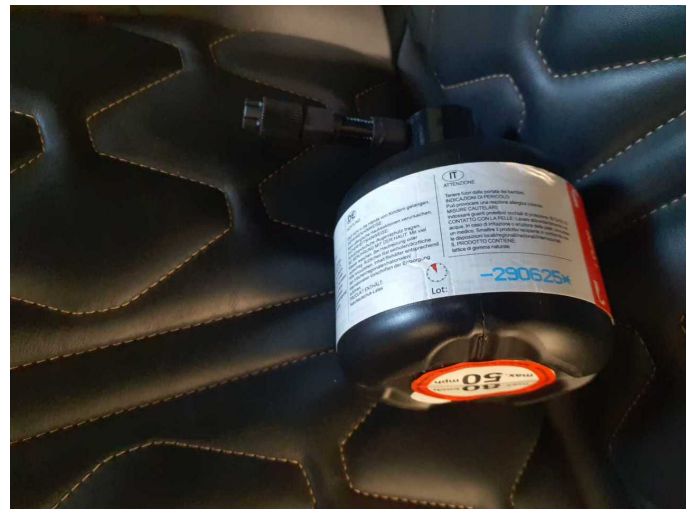


Figure 34: Misc.

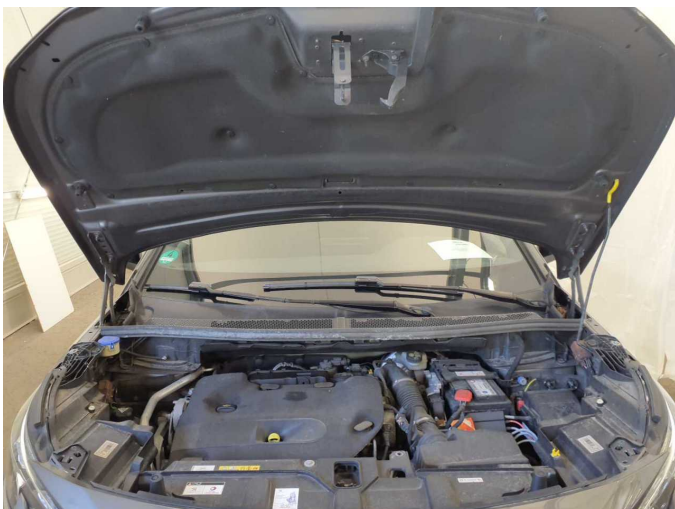


Figure 35: Misc.



Figure 36: Misc.



Figure 37: Misc.



Figure 38: Misc.



Figure 39: Misc.



Damage 1: Equipment: Tirefit filler - Expired - Replace



Damage 2: Side panel - rear left side: Side panel - dent(s) - Smooth repair work



Damage 2: Side panel - rear left side: Side panel - dent(s) - Smooth repair work



Damage 3: 2nd wheel set: 1 tyre (Flankenbeschädigung) - Damaged - Replace



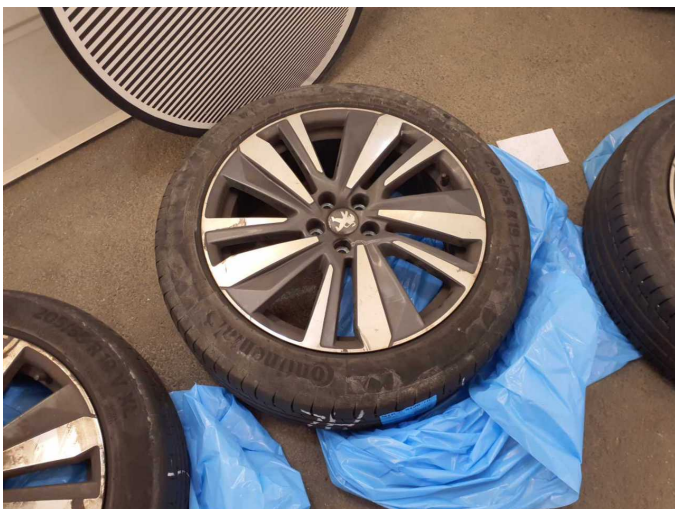
Damage 3: 2nd wheel set: 1 tyre (Flankenbeschädigung) - Damaged - Replace



Damage 4: 2nd wheel set: 1 alloy rim - Scratched - Loss in value



Damage 4: 2nd wheel set: 1 alloy rim - Scratched - Loss in value



Damage 5: 2nd wheel set: 1 alloy rim - Scratched - Loss in value



Damage 5: 2nd wheel set: 1 alloy rim - Scratched - Loss in value



Damage 6: 2nd wheel set: 1 alloy rim (Großflächig verkratzt) - Scratched - Replace



Damage 6: 2nd wheel set: 1 alloy rim (Großflächig verkratzt) - Scratched - Replace



Damage 6: 2nd wheel set: 1 alloy rim (Großflächig verkratzt) - Scratched - Replace



Damage 6: 2nd wheel set: 1 alloy rim (Großflächig verkratzt) - Scratched - Replace



Damage 7: 2nd wheel set: 1 alloy rim (Großflächig verkratzt / mit Materialabtrag) - Scratched - Replace



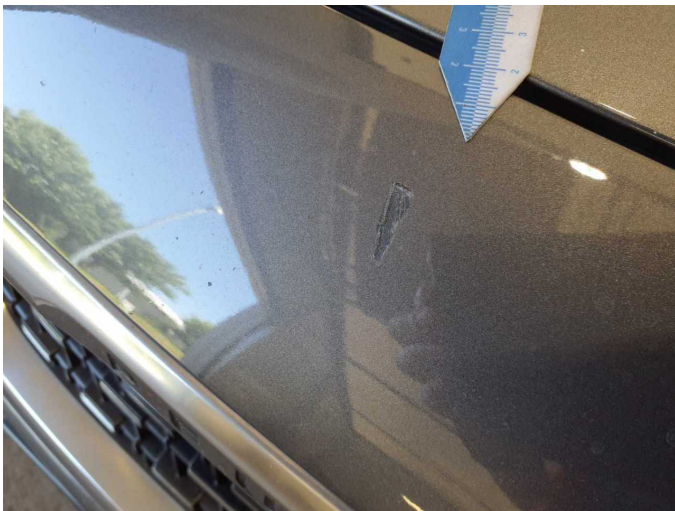
Damage 7: 2nd wheel set: 1 alloy rim (Großflächig verkratzt / mit Materialabtrag) - Scratched - Replace



Damage 7: 2nd wheel set: 1 alloy rim (Großflächig verkratzt / mit Materialabtrag) - Scratched - Replace



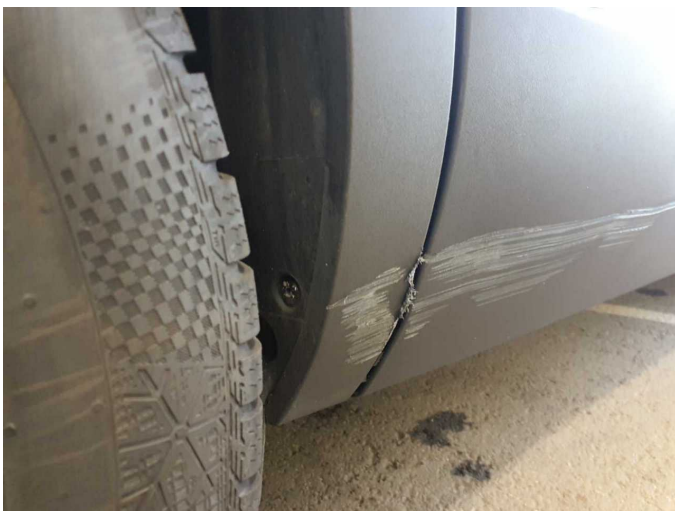
Damage 8: Front bumper: Front bumper - Scratched - Paint



Damage 8: Front bumper: Front bumper - Scratched - Paint



Accident 1: Side right



Accident 1: Side right



Accident 1: Side right



Accident 1: Side right



Accident 1: Side right



Wartungshistorie

(gemäß Auftraggeber Informationen)

Fahrgestellnummer: VF3MJHZRLS193973
Hersteller / Modell: PEUGEOT PEUGEOT 5008 BlueHDi 180 EAT8 GT

Datum	KM-Stand	Beschreibung
09.03.2026	142.982	Bremsflüssigkeit; Bremsflüssigkeit ern; Keilrippenriemen; Motoröl b. Wartung; Ölfilter ern; Regelwartungsdienst; Systemtest/Eigendiagnose; Wartung Sonstiges; Wasserpumpe ern
15.12.2025	137.251	Bremse Sonstiges; Bremsklötze vorne; Bremsscheiben + Klötze v; Bremsscheiben vorne
17.11.2025	135.600	HU + AU
17.09.2025	130.680	Systemtest/Eigendiagnose
23.05.2025	120.674	Systemtest/Eigendiagnose
13.01.2025	109.500	Motoröl b. Wartung; Ölfilter ern; Regelwartungsdienst; Wartung Sonstiges
15.01.2024	79.157	Bremse Sonstiges; Bremsklötze hinten; Bremsklötze vorne; Bremsscheiben + Klötze h; Bremsscheiben + Klötze v; Bremsscheiben hinten; Bremsscheiben vorne; HU + AU; Motoröl b. Wartung; Ölfilter ern; Regelwartungsdienst; Wartung Sonstiges
08.12.2022	52.686	Bremsflüssigkeit; Bremsflüssigkeit ern; Kraftstofffilter ern; Luftfiltereinsatz ern; Motoröl b. Wartung; Ölfilter ern; Regelwartungsdienst; Wartung Sonstiges
28.09.2021	16.178	Kleine Inspektion; Motoröl b. Wartung; Ölfilter ern; Wartung Sonstiges