



Assessment

- Vehicle Inspection Report -

Number: 10613012
From: 15.05.2026

» Overview

Order number: 1002447387
Order completed: 15.05.2026 11:30
Report number: 10613012
VIN: WVVZZZCD3PW180016



Front Left 3/4



Rear Right 3/4



Mileage



Assessment

- Vehicle Inspection Report -

Number: 10613012
From: 15.05.2026

» Vehicle Data

| | |
|-------------------------------------|--|
| Vehicle category: | Passenger Car |
| Vehicle type: | Limousine |
| Make: | Volkswagen |
| Model: | Golf |
| Manufacturers and type code: | 0603 / CMI |
| Date of first registration: | 19.05.2023 |
| Mileage: | 37,832 km |
| Proof of mileage: | ReadOff |
| Exterior colour: | Uranograu |
| Roof colour: | Uranograu |
| Propulsion: | Front |
| Fuel: | Petrol |
| Engine size (cc): | 1,984 ccm |
| Performance: | 180 kW (245 PS) |
| Length: | |
| Height: | |
| Width: | |
| Permitted total weight: | |
| Wheelbase: | |
| Number of powered axles: | 2 |
| Cylinders: | 4 |
| Euronorm: | Euro 6 |
| Number of doors: | 5 |
| Number of seats: | 5 |
| Gearbox: | Automatic 7-speed |
| Upholstery type: | Lining fabrics |
| Interior colour: | Soul-Schwarz - Tornadorot/Soul-Schwarz/ Schwarz/Soul-Schwarz |
| Number of keys: | 2 |

» Documents & Maintenance

| | |
|--|--------------|
| Statutory inspection date: | 05.2026 |
| Registration certificate available: | Yes |
| Registration certificate received: | No |
| License plate: | None |
| Maintenance book: | Digital |
| Maintenance: | Not testable |
| Maintenance last date: | |
| Maintenance last mileage: | |



Assessment

Number: 10613012
From: 15.05.2026

- Vehicle Inspection Report -

| | |
|---|--|
| 12-V outlet in luggage compartment | Driver and front passenger airbag with front passenger airbag deactivation |
| 2 LED reading lights in front and 2 in rear | Driving Mode Selection |
| 2 USB-C ports in the front, 2 USB-C charging sockets on the center console in rear, charging capacity up to 45 W | Driving on the right |
| 3 head restraints in rear | Dual-clutch transmission DSG DQ381 |
| 30-color ambient lighting, illuminated center console storage compartment in front | Dynamic headlight range control |
| 3-point seat belt for center rear seat | Electromechanical parking brake with Auto Hold function |
| 3-point seat belts for the outer rear seats | Electronic immobilizer |
| 3-point seat belts in front with height adjustment and seat belt pretensioners | Electronic restriction of top speed |
| 4 alloy wheels "Richmond" 7.5J x 17 | Electronic Stability Control and electromechanical brake booster |
| 4-cylinder SI engine 2.0 l | Emergency call service; no registration required, service is activated upon delivery |
| 4-cylinder SI engine 2.0 l TSI, 180 kW | Emission standard EU6 AP |
| 6+1 speakers | Equipment options subset for Germany |
| 7-speed automatic transmission or dual-clutch transmission DSG, note: PR family EDF | Ext. mirrors, power-adjustable and heated, with memory feature and front passenger ext. mirror lowering function |
| Activated carbon canister (Evaporative Emission Control System (EVAP)) | Extended pedestrian protection measures |
| Air Care Climatronic 3 zone automatic climate control w/ allergen filter, enhanced air filter a. controls in rear | Exterior mirrors: aspherical on driver side, convex on front passenger side |
| Alternator 140 A | First aid kit, warning triangle and safety vest |
| App-Connect incl. App-Connect Wireless for Apple CarPlay and Android Auto | Four-link suspension |
| Auto. Emergency Braking Front Assist with Pedestrian and Cyclist Monitoring | Front center armrest, height- and longitudinally adjustable |
| Automatic headlight control with LED separate daytime running light and entry and exit lighting | Front differential lock |
| Automatically-heated washer nozzles in front | Front head restraints integrated into the seat |
| Basic equipment variant | Front seats with height adjustment |
| Battery 420 A (70 Ah) | Front stabilizer bar |
| Body-colored bumpers, air intake in honeycomb structure | Front-wheel drive |
| Body-colored exterior mirror housings and door handles | Fuel system for fuel-injected SI engine |
| Car2X | Gearshift knob/handle in aluminum |
| Carpet mats in front and rear | Hatchback |
| Chrome elements on power mirror and window regulator switches, chrome trims on the vents | Headliner |
| Cornering light and poor weather light | Heated front seats |
| Curtain airbags in front and rear, side airbags in front, center airbag | Illuminated molding between headlamps and illuminated door handle recesses |
| Decorative inserts for dashboard and front door trim panels | Illuminated vanity mirrors in sun visors |
| Delivery "Autostadt Wolfsburg" | Initial standard fuel filling |
| Digital radio reception DAB+ | Inserts of front seats and outer rear seats in fabric "Scale Paper" |
| Dimming interior rearview mirror | Instrument cluster with electronic speedometer, odometer and trip odometer, tachometer |
| Disc brakes in front | ISOFIX anchors for child seats on outer rear bench seats and on front passenger seat, compatible for i-Size |
| Disc brakes in rear | Keyless Start without SAFELOCK |
| Diversity antenna for FM reception | Laminated safety glass windshield, heat- and sound-insulating |
| Door and side trim panel | Lane keeping system Lane Assist |
| Driver alert system | Leather-wrapped multi-function sports steering wheel, heated, with touch control and shifting paddles |



Assessment

Number: 10613012
From: 15.05.2026

- Vehicle Inspection Report -

| | |
|---|--|
| LED light unit in front footwell, selectable light color | Speed limiter in combination with online services |
| LED Plus headlamps | Sports suspension |
| LED rear combination lamps | Standard battery/alternator capacity |
| Left-hand drive | Standard climatic zones |
| License plate carrier in front and rear (ECE) | Standard curb weight range |
| LongLife Service Regime | Standard electronic engine sound |
| Lumbar supports in front | Standard engine starter |
| Manual in German (Germany) | Standard manufacturing sequence |
| Mobile phone interface with inductive charging feature | Standard paint coating |
| Multi-color Digital Cockpit Pro, selection of different info profiles possible | Standard rear seat release |
| Multifunction camera | Start-stop system with regenerative braking |
| Nameplate set "GTI" | Surround lighting with welcome light |
| No special edition | Suspension range 39 installation control only, no requirement forecast |
| No special purpose vehicle, standard equipment | Tailgate/trunk lid unlocking from outside |
| Non-folding front passenger seat backrest | Tire Mobility Set: 12-volt compressor and tire sealant |
| Non-smoker's package: Storage compartment and 12-V outlet in front | Tire Pressure Monitoring System |
| Not hot country | Tire suppliers for EU countries |
| Oncoming vehicle braking when turning and swerve support | Tires 225/45 R17 with sporty vehicle dynamics |
| Online service, with OCU, with head unit coding, without engine immobilizer interconnection | Tool kit |
| Operating permit, alteration | Top sports equipment |
| Operating voltage 12 V | Transport protection film (minimum protection) with additional transport protection measures |
| Park Distance Control - warning signals for obstacles in the front and rear | Two-tone horn |
| Part set without country-specific prescriptive standard | Type approval country Germany |
| Pedals in brushed stainless steel | Unsplit rear bench seat, asymmetric split folding backrest, with center armrest |
| Premium sports seats in front | UWB-capable country and carrier frequency, 433.92 to 434.42 MHz |
| Preparation for subsequent activation: Navigation feature "Discover Media" incl. Streaming & Internet | Vehicle class differentiation -5H0- |
| Preparation for We Connect and We Connect Plus | Vehicles without special upgrade measures |
| Privacy glass for rear side windows and rear window | Warning signal and warning light for front and rear seat belts not fastened |
| Progressive steering | Weight range 3 installation control only, no requirement forecast |
| Radio | Wheel locks with extended theft protection |
| Rear exhaust tailpipe (standard) | Wheelbase |
| Rear floor panel module, type 1 | Windshield wiper intermittent control with light sensor |
| Rear fog light on one side, back-up light on both sides | Winter package |
| Rear spoiler | Without additional decorative trims |
| Rear stabilizer bar | Without additional front underbody guard |
| Rear view camera system | Without additional tires |
| Refrigerant R1234yf | Without alternative drive system |
| Regional code " ECE " for radio | Without auxiliary heater/parking heater |
| Service indicator 30 000 km or 2 years (variable) | Without charging cable |
| Shock absorption in front | Without decals and emblems |
| Special identification label for EC for M1 passenger vehicles | Without dynamic road sign display |



Assessment

- Vehicle Inspection Report -

Number: 10613012
From: 15.05.2026

- Without electric motor (hybrid)
- Without extended safety system
- Without fire extinguisher
- Without headlamp washer system, with washer fluid level indicator
- Without head-up display
- Without heat accumulator/auxiliary heater
- Without hill start assist/hill descent control/comfort driving assist
- Without lane change assist
- Without light control
- Without locking and starting systems
- Without mode 3 charging cable
- Without partition
- Without preparation for rotating beacon/siren combination
- Without preparation for two-way radio installation
- Without roof insert (standard roof)
- Without roof rails
- Without seat ventilation/massage seat
- Without second battery
- Without special body measures
- Without trailer hitch
- Without voice control



Assessment

- Vehicle Inspection Report -

Number: 10613012
From: 15.05.2026

» Tyres

MOUNTED TYRES

| Make | Location | Position | Type | Rim | Dimensions | Profile depth |
|-------------|----------|----------|--------|-----------|------------------|---------------|
| Bridgestone | Front | Left | Summer | Aluminium | 225/45 R 17 91 W | 4.0 mm |
| Bridgestone | Front | Right | Summer | Aluminium | 225/45 R 17 91 W | 4.0 mm |
| Bridgestone | Rear | Left | Summer | Aluminium | 225/45 R 17 91 W | 6.0 mm |
| Bridgestone | Rear | Right | Summer | Aluminium | 225/45 R 17 91 W | 6.0 mm |

Permitted: Yes

Roadworthy: Yes

SPARE/EMERGENCY TYRE & ACCESSORIES

Toolkit present: Yes

Repair kit present: Yes

Repair kit expiration date: 02.2027

Compressor present: Yes



Assessment

- Vehicle Inspection Report -

Number: 10613012
From: 15.05.2026

» Devaluation Factors

| Nr | Location | Damage type | Repair type |
|----|--------------------|-------------|-----------------------|
| 1 | Oil change | Maintenance | Execute |
| 2 | Interior | Smell | Ozone treatment |
| 3 | Inner door sill FL | Dent(s) | Paintless dent repair |

» Usage Damages

| Nr | Location | Damage type | Repair type |
|----|------------|---------------|-------------|
| 1 | Bonnet | Stone chip(s) | Acceptable |
| 2 | Windscreen | Stone chip(s) | Acceptable |
| 3 | Bumper R | Scratch(es) | Acceptable |



Assessment

- Vehicle Inspection Report -

Number: 10613012
From: 15.05.2026

» Commercial devaluation

| | |
|---|-----------------------------------|
| Known previous damages: | No |
| Previous damages detectable: | No |
| Repainting present: | No |
| Paint thickness measurement performed: | Yes - no abnormalities/deviations |

PAINTHICKNESS MEASUREMENT RESULTS

The measured values were in the usual range.

At least 3 measurements were carried out per component.



Assessment

Number: 10613012
From: 15.05.2026

- Vehicle Inspection Report -

» Notes On The Assessment

Details of the assignment and the scope of the assessment:

The order was placed to prepare a condition report on the described vehicle.

The vehicle condition assessment was carried out in accordance with the order on the basis of the standards for vehicle assessments specified by the client. The expert makes the findings in the individual case on the basis of his own expertise and at his own expert discretion.

Vehicle identification:

WVWZZZCD3PW180016

VIN checked and matches documentation

Vehicle condition:

Cleaned

Inspection condition:

Sufficient

Lifting platform/lifting equipment used:

No

Testdrive carried out:

No

Engine test carried out:

Yes



Assessment

- Vehicle Inspection Report -

Number: 10613012
From: 15.05.2026

» Remarks

This copy was generated electronically. It is valid without an original signature.



Assessment

- Vehicle Inspection Report -

Number: 10613012
From: 15.05.2026

» Commercial Pictures



Front Left 3/4



Front Right 3/4



Rear Left 3/4



Rear Right 3/4



Mileage



Tools



Sill outer L



Sill outer R



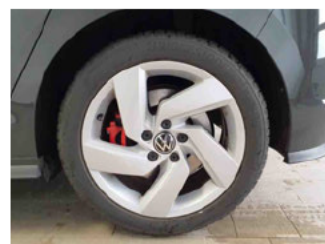
Chassis nr



Wheel FL



Wheel FR



Wheel RL



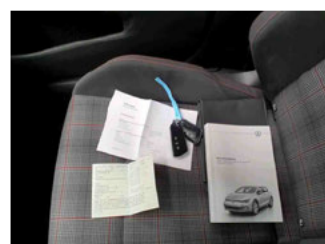
Wheel RR



Central console



Engine compartment



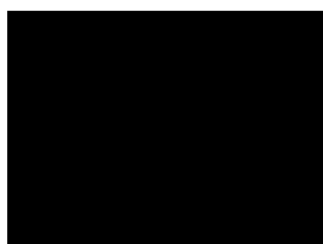
Documents



Interior arrangement



Registration Certificate



History Maintenance



Interior - front



Assessment

- Vehicle Inspection Report -

Number: 10613012
From: 15.05.2026



Interior - rear



Tirefit expiration date



GPS/Radio



Assessment

- Vehicle Inspection Report -

Number: 10613012
From: 15.05.2026

» Devaluation Damages

DEVALUATION FACTORS

1 - Oil change - Maintenance - Execute



2 - Interior - Smell - Ozone treatment

| | |
|---------|-----------------|
| Comment | Raucherfahrzeug |
|---------|-----------------|

3 - Inner door sill FL - Dent(s) - Paintless dent repair



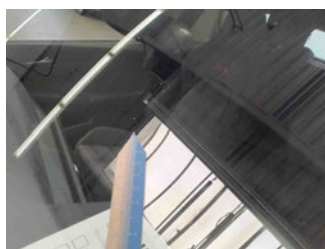
USAGE DAMAGES

1 - Bonnet - Stone chip(s) - Acceptable



2 - Windscreen - Stone chip(s) - Acceptable

| | |
|---------|-----------|
| Comment | Abplatzer |
|---------|-----------|





Assessment

- Vehicle Inspection Report -

Number: 10613012
From: 15.05.2026

3 - Bumper R - Scratch(es) - Acceptable

