

Expertise

Protocol number: 45794137
Order No. / Reference: 26207975
Inspection date: 5 Jun 2026

Manufacturer: Audi

Model: A5 Sportback 45 TFSI quattro S tronic S line

VIN: WAUZZZF59PA050238



Vehicle details

Manufacturer / Type / Model / Equipment

Audi A5 Sportback 45 TFSI quattro S tronic S line

Vehicle Identification number WAUZZZF59PA050238

Mileage (Read) 40,135 km

First registration 26 Apr 2023

Number of holders 1

Power / Engine displacement 195 kw / 1,984 ccm

Fuel type / Cylinder Hybrid Petrol / E / 4

Gearbox / Number of gears Automatic / 7

Type of drive All-wheel drive

Type of vehicle Saloon car

Colour / colour code District Green Metallic (X6M)

Doors / Seats 5 / 4

Upholstery type Leather

Colour of upholstery Black



Vehicle details

Maintenance booklet / proof	digital proof / complete	Next maintenance in	12,400 km
Last service on / at	05/2025 at 28,069 km		
Key is / should be	2 / 2	FZG documents	ZB#2 (B) was available (copy), ZB#1 (S) was not available.
		Letter No.	GS532603
Previous damage / Accident	Detectable	Repainting	None detectable
Inspection conditions	sufficient	Lifting equipment / pit	yes
Test drive	Not performed	Engine function test	Performed
Manufacturer key number/ type code number	0588 / BVE 00375		
Emission standard	EURO6;WLTP;AP;PI/CI; M, N1 I	fine dust sticker	
Permitted total weight	2,175 kg	Empty weight	

Tyres

Mounted tyres				
#	Tyre size	Type of tyre	Manufacturer	Tread depth
1)	245/45 R18 97V	Winter tyres on Light alloy	Goodyear	7mm / 7mm
2)	245/45 R18 97V	Winter tyres on Light alloy	Goodyear	7mm / 7mm

Additional tyres				
#	Tyre size	Type of tyre	Manufacturer	Tread depth
1)	255/35 R19 96Y	Summer tyres on Light alloy	Bridgestone	5mm / 5mm
2)	255/35 R19 96Y	Summer tyres on Light alloy	Bridgestone	6mm / 6mm

Replacement				
Typ	Tyre size	Type of tyre	Manufacturer	Tread depth
	Tirefit	Expiration date 02/2027		

Legend: Tread depth information for the left tire is listed first, for the right tire it is listed second on the axle in the direction of travel.



Equipment

Standard equipment

- Airbag for driver and front passenger
- Accent areas matte black
- Anti-lock braking system (ABS)
- Audi connect emergency call & service including vehicle control
- Electrically adjustable/heated exterior mirrors
- Outdoor temperature display
- Fabric headliner
- Tachometer
- Door sill trims with aluminum inlay at the front, illuminated, with S lettering
- Driver information system
- Electric front windows
- front and rear floor mats
- Cruise control system with adjustable speed limiter
- Interior lighting
- Manual child lock
- Automatic air conditioning
- boot floor mat
- Fuel tank (58 liters)
- LED headlights
- Mild hybrid
- front center armrest
- Otto particulate filter
- Upholstery: Fabric finish Index
- Wheel: Tire pressure monitoring system
- Radio: MMI Radio Plus
- Radio accessories: Data module Europe
- Electromechanical power steering
- Front seats (standard seats)
- Phone: Bluetooth interface
- Glazing: Windscreen in heat-insulating and acoustic glazing
- Airbag: Front side airbags and head airbag system
- "quattro" all-wheel drive with ultra technology
- Drive slip control
- Audi drive select
- Audi pre sense city
- Exterior mirror housings in body color
- third brake light
- Decorative inlays diamond lacquer silver grey
- Rear parking sensors
- Electromechanical parking brake
- Electronic Stability Control (ESC)
- Suspension (sports suspension)
- Remote key, without safe lock
- Luggage compartment lid, electrically opening and closing
- Transmission: S tronic (7-speed)
- Interior mirror dimming
- ISOFIX and Top Tether child seat anchors for the outer rear seats
- Headrests (4)
- LED taillights
- Steering wheel: Leather steering wheel in 3-spoke design with multifunction
- Non-smoking version
- Package Gloss
- Wheel: Alloy wheels "5-twin-spoke design" (S-design)
- Wheel: Tire repair kit
- Radio accessories: 8 speakers
- Rear seat backrest foldable
- Seat belts: Three-point automatic seat belts for all seats
- Start-stop system
- First aid kit with warning triangle
- Electronic immobilizer
- Green thermal insulation glazing



Extra equipment

- Audi virtual cockpit with 12.3" color display (Innovative, fully digital instrument cluster for flexible and needs-based display of relevant information according to driver requirements: speed/RPM, map display, Audi connect services, radio/media information, etc.; the VIEW button on the multifunction steering wheel allows switching between two different-sized displays of the round instruments. The display with smaller instruments enables large, clear graphics of the on-board computer and MMI content)
- Comfort package seats (variable headrests for the front seats - 4-way lumbar support for the front seats, electrically adjustable horizontally and vertically - comfort center armrest in the front, longitudinally adjustable and tiltable; additional storage option in the integrated storage compartment)
- Deletion of model designation and performance/technology lettering
- Matrix LED headlights with Audi laser light (Matrix LED headlights with Audi laser light, dynamic light styling and dynamic turn signals - LED taillights with dynamic light styling and dynamic turn signals - headlight cleaning system)
- Package: Black Optics Package (adds black accents to the exterior in the area of the Audi Singleframe grille, the trim strips on the side windows, and the front and rear bumpers. Design varies depending on model and equipment.)
- Storage and luggage compartment package (Sportback) (flexible transport of items and comfort on journeys; consisting of: - storage net on the back of the front seat backrests - cupholder in the rear center armrest - storage compartment on the driver's side - lockable glove compartment in the luggage compartment: - luggage compartment net - net in recesses on the left and right - tension strap on the right)
- Telephone: Audi Phone Box (Up to two smartphones can be paired with the vehicle simultaneously via Bluetooth, allowing you to either play music through the vehicle or make phone calls from one of the two smartphones. It connects to the vehicle's antenna, improving both reception and call quality. Additionally, the smartphone can be charged wirelessly using the Qi standard or via USB if it is still in the storage compartment.)
- Three-seater rear seating system (distinctive outer rear seats, visually adapted to the front seats and an additional middle seat - 3 rear L-shaped headrests, manually height-adjustable for better rear visibility; rear seat backrest split in a 40:20:40 ratio or fully foldable)
- Wheel: Alloy wheels, 10-parallel spoke design (8.0 J x 18 with winter tires 245/40 R 18 - suitable for snow chains, maximum permissible speed 240 km/h)
- Airbag: Rear side airbags
- Audi pre sense basic (within the system's limits, it initiates preventive safety measures for the occupants by networking and coordinating different vehicle systems. In unstable driving conditions, the front seat belts are electrically tightened. Depending on the situation, the windows close. The hazard warning lights are activated to warn following traffic.)
- Brake calipers painted red (supporting the dynamic character of the vehicle through a sportier look of the braking system)
- Business package (front seat heating - comfort package mirrors - infotainment package smartphone - navigation package - leather steering wheel in 3-spoke design with multifunction plus)
- Front sports seats (with manual adjustment of seat height, seat longitudinal position, seat tilt, backrest tilt, headrest and belt height; with pronounced seat side bolsters for better lateral support in curves, extendable thigh support)
- Glazing: Sun protection glazing, tinted (rear window, rear door and side windows tinted)
- Package: Ambient Lighting Package (in addition to the interior lighting: - approach lighting in the exterior door handles - entry lights on the underside of the front doors - illuminated front cupholders - front footwell lighting - illuminated interior door handles - ambient door lighting - ambient lighting in the front center console)
- Paint finish: Metallic
- Parking Assistance Package (Parking Aid Plus - Parking Assist - Rearview Camera)
- Radio accessories: Audi sound system (10 speakers including center speaker and subwoofer - 6-channel amplifier - total output of 180 watts)
- Seat covers in microfiber/leather (center panels of the front seats and the two outer seats in the rear in microfiber black or rock grey - side bolsters, headrests, middle seat in the rear and center armrest in leather black or rock grey)
- Steering wheel: Sport contour leather steering wheel in a 3-spoke design with multifunction controls and a flat bottom (steering wheel height and reach are manually adjustable. For convenient operation of the extensive standard and optional infotainment features, the steering wheel is equipped with 12 multifunction buttons. Includes a leather gearshift/selector lever knob and a leatherette handbrake grip.)
- Wheel: Audi new car tire warranty (36-month term from vehicle handover to the first customer)
- Wheel: Audi Sport light alloy wheels, 5-double arm, titanium grey matt, polished (8.5 J x 19 with tires 255/35 R 19)

Retrofitted equipment

- Sport steering wheel in 3-spoke design with multifunction steering wheel plus exhaust 2PF



Brief expert findings

Documents submitted	At the time of the inspection, the vehicle registration certificate Part 2 (title) was available, but the vehicle registration certificate Part 1 (document) was not. (Copy)
VIN comparison	The vehicle identification number (VIN) was read from the vehicle and its conformity with the submitted documents was confirmed by the undersigned during the inspection.
Inspection	The inspection conditions were sufficient for the assessment of the vehicle. Lifting equipment and/or a pit were available for examining the vehicle.
Test drive	No test drive/shunting maneuver was carried out during the inspection of the vehicle.
Engine function test	An engine test run was performed. This is due to the following reason.: i.O.

Value reducing factors

No.	Component group	Description
1	Door - rear left side	Door - Soiled - Clean
2	Door - front right side	Door - dent(s) - Smooth repair work
3	Door - rear right side	Door - Scratched - Smart repair
4	Door - rear left side	Door - Scratched - Smart repair
5	Interior	Interior - Soiled - Clean
6	Front bumper	Front bumper - Scratched - Smart repair
7	Side panel - rear right side	Side panel - Dent / paintcoat damage - Smart repair
8	Wheel / tyres	Alloy rim - rear right side - Scratched - Loss in value
9	Bonnet	Bonnet - Stone chips - Paint
10	Vehicle glazing	Windscreen - Broken / torn - repair according to calculation

Wear and tear

No.	Component group	Description
1	Misc.	Main inspection - No evidence - No deduction

The vehicle shows signs of wear and tear commensurate with its age and use.

Previous damages

No.	Previous damage	Extent of damage (Net)
1	Front, Provided by user / customer, from 26 Apr 2025	80,00 €
2	Front, Provided by user / customer, from 11 Jul 2024	903,05 €
3	Front, Rear, Side right, Provided by user / customer, from 4 Feb 2024	1.670,21 €

Accident damages

No.	Accident
1	Rear, Side right



Order/Scope of Order

An order was placed to prepare a sales report for the described vehicle. This report includes the following:

- Description of key vehicle information
- Documentation of equipment features
(Delivery by third-party service providers)
- Documentation of damage, defects, missing parts
- Documentation of prior damage, unrepaired prior damage, repainting
- A brief visual or functional inspection of the equipment details, if possible.
(Functional testing of driver assistance systems is not included in the scope of services!)
- a photographic documentation of the vehicle

Basis for the order

This product is based on the guidelines for vehicle returns and valuations published by Alphabet Fleet GmbH. The expert makes the specific findings in each individual case objectively, within the framework of the prescribed standards, based on their own expertise.

The vehicle inspection takes place in a fully assembled, unassembled state.

Damage or defects that can only be detected during disassembly/diagnostic work or through further investigation remain within the realm of prognostic risk. An increased risk exists due to concealed defects caused by fraudulent misrepresentation and which were not identifiable by the expert.

Damage or defects resulting from normal use or wear and tear of the vehicle will be accepted in accordance with the applicable standard.

There was no explicit identification or monetary consideration of the expected features within the product.

Features which, in their nature and extent, slightly exceed normal use but do not constitute unacceptable damage, will be documented and indicated as signs of wear, if applicable.

Damage or defects that, according to the applicable standard, can no longer be attributed to normal use or wear and tear are listed under "Value Reducing Factors" in the product description.

Depending on the product specification, a monetary ID can be provided. If this takes place, the costs can be 100% or pro rata depending on the vehicle's age and mileage.

Previous damages

Non-repaired previous damages were found at the vehicle. The necessary repair costs are listed in the expert report or if necessary, are listed in detail in a separately enclosed repair cost calculation.

Comments

Die beigefügte Reparaturkostenkalkulation wurde nach bestem Wissen und Gewissen unter eingeschränkter Besichtigungsbedingung im demontagefreien Zustand erstellt. Es können aufgrund verdeckter Beschädigung erhebliche Mehrkosten und somit Abweichung der für den Unfall ausgewiesenen Reparaturkosten nicht ausgeschlossen werden.

ALPHABET



Figure 1: Diagonal front (left)

ALPHABET



Figure 2: Diagonal front (right)

ALPHABET



Figure 3: Diagonal rear (left)

ALPHABET



Figure 4: Diagonal rear (right)

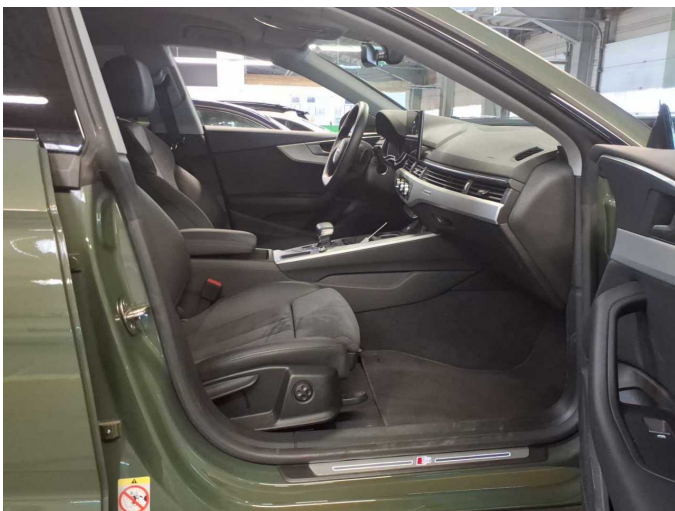


Figure 5: Interior - front



Figure 6: Interior - rear



Figure 7: Instrument cluster



Figure 8: Instrument panel

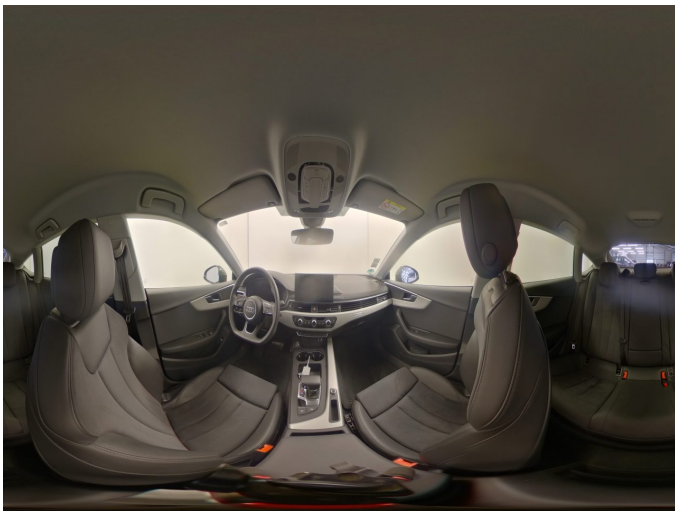


Figure 9: Interior 360° view



Figure 10: Cargo area



Figure 11: VIN



Figure 12: Mounted tyres



Figure 13: Documents



Figure 14: Additional tyres

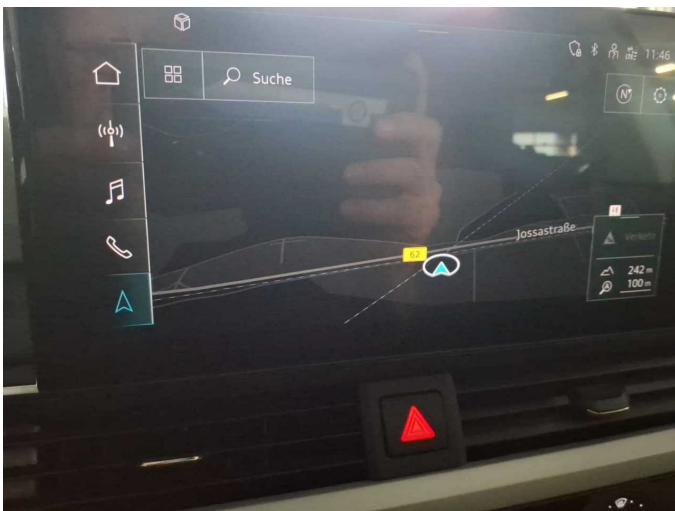


Figure 15: Navigation



Figure 16: Misc.

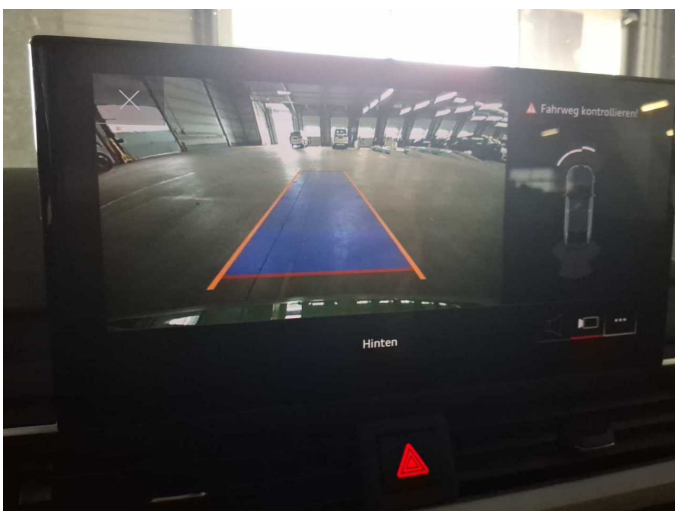


Figure 17: Misc.



Figure 18: Misc.



Figure 19: Misc.



Figure 20: Misc.

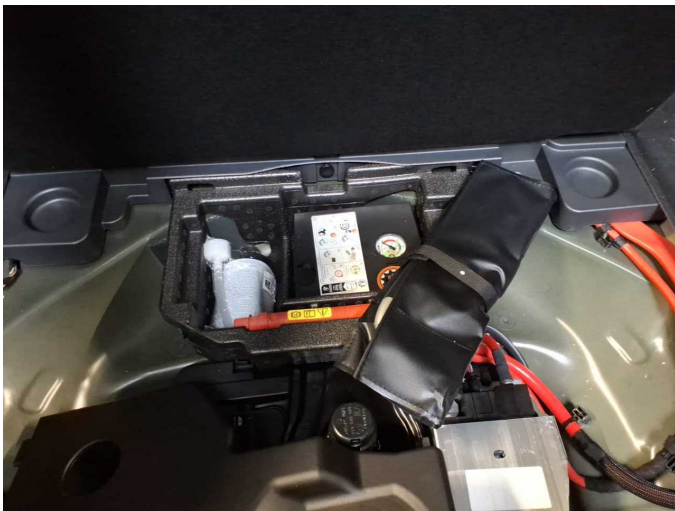


Figure 21: Misc.



Figure 22: Misc.



Figure 23: Misc.

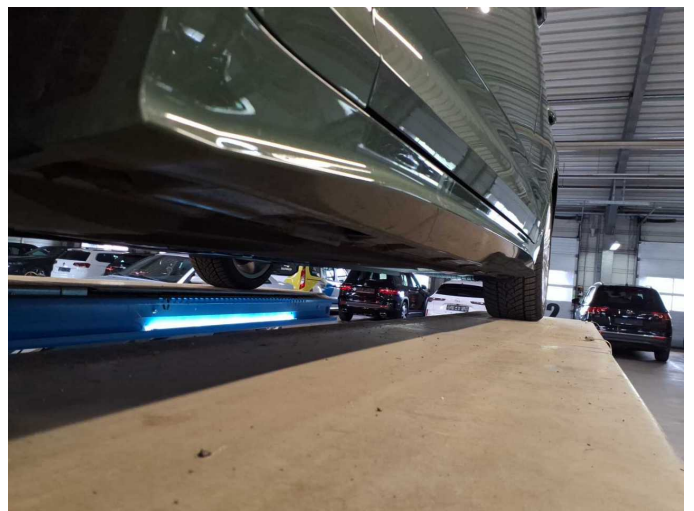


Figure 24: Misc.



Figure 25: Misc.



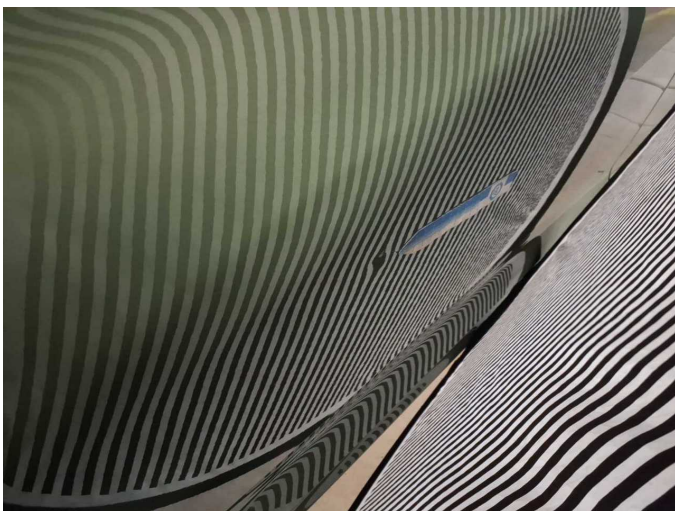
Damage 1: Door - rear left side: Door - Soiled - Clean



Damage 1: Door - rear left side: Door - Soiled - Clean



Damage 2: Door - front right side: Door - dent(s) - Smooth repair work



Damage 2: Door - front right side: Door - dent(s) - Smooth repair work



Damage 3: Door - rear right side: Door - Scratched - Smart repair



Damage 3: Door - rear right side: Door - Scratched - Smart repair



Damage 4: Door - rear left side: Door - Scratched - Smart repair



Damage 4: Door - rear left side: Door - Scratched - Smart repair



Damage 5: Interior: Interior - Soiled - Clean



Damage 6: Front bumper: Front bumper - Scratched - Smart repair



Damage 6: Front bumper: Front bumper - Scratched - Smart repair



Damage 7: Side panel - rear right side: Side panel - Dent / paintcoat damage - Smart repair



Damage 7: Side panel - rear right side: Side panel - Dent / paintcoat damage - Smart repair



Damage 7: Side panel - rear right side: Side panel - Dent / paintcoat damage - Smart repair



Damage 8: Wheel / tyres: Alloy rim - rear right side - Scratched - Loss in value



Damage 8: Wheel / tyres: Alloy rim - rear right side - Scratched - Loss in value



Damage 8: Wheel / tyres: Alloy rim - rear right side - Scratched - Loss in value



Damage 9: Bonnet: Bonnet - Stone chips - Paint



Damage 9: Bonnet: Bonnet - Stone chips - Paint



Damage 9: Bonnet: Bonnet - Stone chips - Paint



Damage 9: Bonnet: Bonnet - Stone chips - Paint



Damage 9: Bonnet: Bonnet - Stone chips - Paint



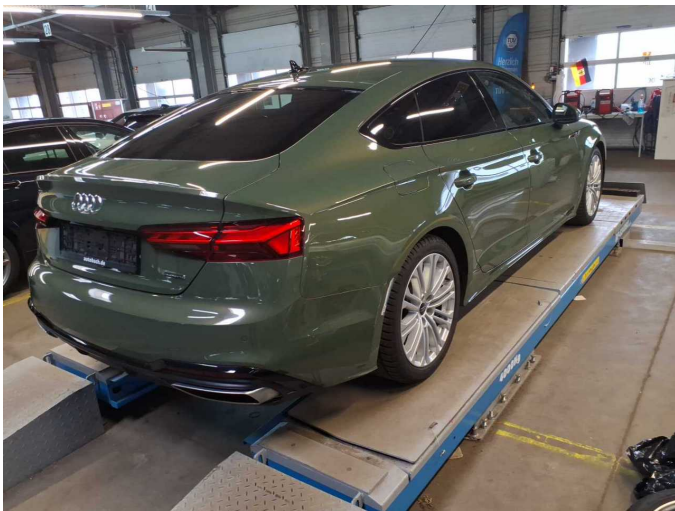
Damage 9: Bonnet: Bonnet - Stone chips - Paint



Damage 10: Vehicle glazing: Windscreen - Broken / torn - repair according to calculation



Damage 10: Vehicle glazing: Windscreen - Broken / torn - repair according to calculation



Accident 1: Rear, Side right



Accident 1: Rear, Side right



Accident 1: Rear, Side right



Wartungshistorie

(gemäß Auftraggeber Informationen)

Fahrgestellnummer: WAUZZZF59PA050238

Hersteller / Modell: AUDI AUDI A5 Sportback 45 TFSI quattro S tronic S line

Datum	KM-Stand	Beschreibung
15.05.2025	28.069	Bremsflüssigkeit; Bremsflüssigkeit ern; Motoröl b. Wartung; Ölfilter ern; Regelwartungsdienst; Wartung Sonstiges