

Expertise

Protocol number: 46364643
Order No. / Reference: 26024687-1
Inspection date: 14 Apr 2026

Manufacturer: Opel

Model: Astra Sports Tourer Plug-In-Hybrid Elegance

VIN: VXKF4DGXTP1090534



Vehicle details

Manufacturer / Type / Model / Equipment

Opel Astra Sports Tourer Plug-In-Hybrid Elegance

Vehicle Identification number VXKF4DGXTP1090534

Mileage (Read) 10,753 km

First registration 4 Jan 2024

Number of holders 1

Power / Engine displacement 110 kw / 1,598 ccm

Fuel type / Cylinder Hybr.B/E ext.auf1 / 4

Gearbox / Number of gears Automatic / 8

Type of drive Front drive

Type of vehicle Station wagon

Colour / colour code Kobalt Blau Metallic

Doors / Seats 5 / 5

Upholstery type Cloth / leather combination

Colour of upholstery Grey-Black



Vehicle details

Maintenance booklet / proof	digital evidence / incomplete	Next maintenance in	
Last service on / at	01/2025 at 6,942 km		
Key is / should be	2 / 2	FZG documents	ZB#2 (B) was available (copy), ZB#1 (S) was not available.
		Letter No.	HB397416
Previous damage / Accident	None detectable	Repainting	None detectable
Inspection conditions	sufficient	Lifting equipment / pit	yes
Test drive	Not performed	Engine function test	Performed
Manufacturer key number/ type code number	1889 / AEW 00009		
Emission standard	EURO6;WLTP;AP;PI/CI; M, N1 I	fine dust sticker	
Permitted total weight	2,170 kg	Empty weight	

Tyres

Mounted tyres

#	Tyre size	Type of tyre	Manufacturer	Tread depth
1)	225/45 R17 94W	All-season tyres on Light alloy	Falken	6mm / 6mm
2)	225/45 R17 94W	All-season tyres on Light alloy	Falken	7mm / 7mm

Replacement

Typ	Tyre size	Type of tyre	Manufacturer	Tread depth
Tirefit		Expiration date 05/2029		

Legend: Tread depth information for the left tire is listed first, for the right tire it is listed second on the axle in the direction of travel.

TÜV SÜD Auto Partner GmbH
Wiesenring 2
04159 Leipzig

Inspection location
Hartmann Fleet Professionals GmbH
Leerenstraße 25
29683 Bad Fallingbommel



Equipment



Standard equipment

- 3 adjustable driving modes (Electric mode (Standard mode) - Sport mode - Hybrid mode)
- Airbag: Chest-pelvis side airbags, driver and front passenger (side airbag, front passenger can be manually deactivated)
- Airbag: Front and rear outer head airbags
- Active pedestrian warning tone (AVAS) (ambient noise up to a driving speed of 50 km/h)
- Exterior mirrors, electrically adjustable, heated and folding
- Exterior mirror housings in black
- Hill Start Assist
- third brake light
- Roof rails
- Electronic brake force distribution (EBD)
- Electric windows front and rear (with one-touch function and anti-pinch protection)
- Transmission: 8-speed automatic transmission
- Back window, heater
- rear window wiper
- Hybrid-specific display via infotainment system display (energy consumption display and energy flow diagram - charging range and consumption statistics - battery charge level indicators - charging stations via navigation)
- Charging cable: Mode 2 charging cable (Type 2, up to 1.8 kW - for household sockets - 6 meters length)
- LED ambient lighting (front doors, adjustable in 8 colors)
- LED headlights (LED headlights - LED daytime running lights - LED taillights - LED turn signals - manual headlight range control - high beam assist - automatic low beam - rain sensor)
- Lithium-ion battery (12.4 kWh storage capacity)
- Illuminated makeup mirrors in both sun visors
- Multimedia Infotainment System (with 10" color touchscreen display and 10" driver information display, automatic music recognition, Bluetooth audio streaming, hands-free calling, simultaneous pairing of 2 mobile phones, wireless smartphone integration via Apple CarPlay and Android Auto, personalization options, 4x20 watts, favorite station memory (24 per profile), speed-dependent volume control, FM/AM, DAB+, RDS-EON, 2 USB-C ports, breakdown and emergency call, vehicle status and information)
- gasoline particulate filter (maintenance-free)
- Tire repair kit (including tire sealant and 12-volt compressor (without jack))
- 180-degree reversing camera (parking pilot, front and rear parking aid)
- Keyless locking and starting system Keyless Open & Start
- Seat belts: Three-point seat belts in all seats (belt force limiter and belt tensioner in the front and on the outer rear seats - warning tone and light for unfastened seat belts in all seats)
- 12V power outlet in the center console
- Pre-installation for ISOFIX child seat mounting system (incl. top tether attachment points, rear outer)
- Storage compartments (storage compartment in the center console, in the front doors suitable for 1.5-liter beverage bottles, in the rear doors suitable for 0.5-liter beverage bottles, glove compartment with LED lighting)
- Airbag: Front airbags, driver and front passenger (front passenger airbag can be manually deactivated)
- Anti-lock braking system (ABS) (including brake assist)
- Automatic activation of the hazard warning lights (and unlocking of the doors after deployment of the airbag or seatbelt pretensioner)
- On-board computer
- Braking system: Regenerative
- Tachometer
- Electronic Stability Program (ESP) and Traction Control with engine and brake intervention (TCPlus)
- Front Collision Warning (with automatic emergency braking, pedestrian detection, lane keeping assist, traffic sign recognition and driver fatigue detection, as well as automatic speed assist with stop function)
- Interior rearview mirror, automatically dimming
- Wiring harness for trailer hitch
- Front headrests and 3 rear headrests, height adjustable
- Paintwork: Roof in car color
- Charging port at the rear left with access to the power charging socket
- LED interior lighting (including reading lights, front and rear, as well as trunk lighting and lighting in the front footwell)
- Steering wheel: Leather steering wheel, flattened, perforated, with steering wheel remote control and paddle shifters
- Center armrest, front and rear (front center armrest with USB port and 2 USB chargers - front and rear cup holders - storage compartments - rear center armrest with pass-through)
- myOpel App, with hybrid-specific functions (battery charge level indicator, charging time and range monitoring - remote control of climate control and charging process settings - e-mobility coaching)
- Fog light
- Onboard charger (3.7 kW/16 A, single-phase, vehicle-integrated charging unit)
- Electric parking brake
- Tire pressure monitoring system
- Wheels: Alloy wheels 7.5 J x 17 (5 spokes) in silver/black (with low rolling resistance tires 225/45 R 17)
- Rear seat backrest folds forward in a 40:20:40 split
- The word "Hybrid" is written on it.
- safety net
- Solar Protect heat-insulating glazing (in the rear, heavily tinted)
- Start/Stop system (Driving assistant - Reinforced starter - AGM high-performance battery - eco switch to deactivate the start/stop function - Brake energy recuperation)
- Electronic immobilizer



- Central locking with remote control (and interior switch)

Extra equipment

- All-weather tires
- Air conditioning: Intelli-Air air quality system "Clean Cabin" (incl. air quality monitoring and air filtration system)
- Paint finish: Metallic
- Charging cable: Mode 3 charging cable, single-phase, 7.4 kW (6 m length, for public charging or for the wall box at home)
- Navigation system (Multimedia infotainment system with 10" color touchscreen display and 10" driver information display; navigation system with integrated memory; 3D map display for Europe and Russia; dynamic route guidance via map and/or arrow display and voice prompts; TomTom Online Traffic; online POI search and route guidance; parking information; fuel price information; live weather; over-the-air map updates; intelligent voice control; "Hey Opel" shortcut button; 6 functions; active route suggestions)
- Heated windscreen, ThermaTec
- Intelli-Drive 1.0 (Forward Collision Warning with Automatic Emergency Braking, Pedestrian Detection, Active Lane Keeping Assist, Lane Change Assist, Traffic Sign Recognition and Driver Alert System, Rear Traffic Alert and Automatic Speed Assist with Stop Function, Blind Spot Warning)
- Cargo tray, usable on both sides
- Custom-fit rubber mats
- Seats: Ergonomic active seats for driver and front passenger in Isabella fabric/premium leatherette (Elegance) (certified by the German Campaign for Healthy Backs (AGR) - adjustable length, height, tilt, backrest angle, and seat cushion angle - electro-pneumatically adjustable lumbar support (height and length adjustable) - extendable thigh support - pockets on the backs of the front seats, driver and front passenger - Isabella fabric/premium leatherette, black - heated front seats and steering wheel - heated ThermaTec windshield)

Brief expert findings

Documents submitted	At the time of the inspection, the vehicle registration certificate Part 2 (title) was available, but the vehicle registration certificate Part 1 (document) was not. (Copy)
VIN comparison	The vehicle identification number (VIN) was read from the vehicle and its conformity with the submitted documents was confirmed by the undersigned during the inspection.
Inspection	The inspection conditions were sufficient for the assessment of the vehicle. Lifting equipment and/or a pit were available for examining the vehicle.
Test drive	No test drive/shunting maneuver was carried out during the inspection of the vehicle.
Engine function test	An engine test run was performed.

Value reducing factors

No.	Component group	Description
1	Wheel / tyres	Alloy rim - rear left side - Corrosion - Loss in value
2	Misc.	Inspection / maintenance - Due - Perform
3	Wheel / tyres	Alloy rim - rear right side - Scratched - Replace
4	Wheel / tyres	Alloy rim - front left side - Scratched - Replace
5	Wheel / tyres	Alloy rim - front right side - Scratched - Replace
6	Bonnet	Bonnet (Anätzung) - Paint defect - Paint
7	Roof	Roof - Dent / paintcoat damage - Repair and paint

Wear and tear

No.	Component group	Description
1	Door - rear left side	Door handle - outside - Scratch(es) - No deduction
2	Door - front left side	Door edge - Scratch(es) - No deduction
3	Side panel - rear left side	Side panel - dent(s) - No deduction
4	Front bumper	Front bumper (Unterseite) - Scratch(es) - No deduction

The vehicle shows signs of wear and tear commensurate with its age and use.



Missing parts

Description

Multimedia system - Navigation data storage

Order/Scope of Order

An order was placed to prepare a sales report for the described vehicle. This report includes the following:

- Description of key vehicle information
- Documentation of equipment features
(Delivery by third-party service providers)
- Documentation of damage, defects, missing parts
- Documentation of prior damage, unrepaired prior damage, repainting
- A brief visual or functional inspection of the equipment details, if possible.
(Functional testing of driver assistance systems is not included in the scope of services!)
- a photographic documentation of the vehicle

Basis for the order

This product is based on the guidelines for vehicle returns and valuations published by Alphabet Fleet GmbH. The expert makes the specific findings in each individual case objectively, within the framework of the prescribed standards, based on their own expertise.

The vehicle inspection takes place in a fully assembled, unassembled state.

Damage or defects that can only be detected during disassembly/diagnostic work or through further investigation remain within the realm of prognostic risk. An increased risk exists due to concealed defects caused by fraudulent misrepresentation and which were not identifiable by the expert.

Damage or defects resulting from normal use or wear and tear of the vehicle will be accepted in accordance with the applicable standard.

There was no explicit identification or monetary consideration of the expected features within the product.

Features which, in their nature and extent, slightly exceed normal use but do not constitute unacceptable damage, will be documented and indicated as signs of wear, if applicable.

Damage or defects that, according to the applicable standard, can no longer be attributed to normal use or wear and tear are listed under "Value Reducing Factors" in the product description.

Depending on the product specification, a monetary ID can be provided. If this takes place, the costs can be 100% or pro rata depending on the vehicle's age and mileage.

Previous damages

No apparent prior damage that had been repaired could be found on the vehicle.



Figure 1: Diagonal front (left)



Figure 2: Diagonal front (right)



Figure 3: Diagonal rear (left)



Figure 4: Diagonal rear (right)



Figure 5: Interior - front



Figure 6: Interior - rear

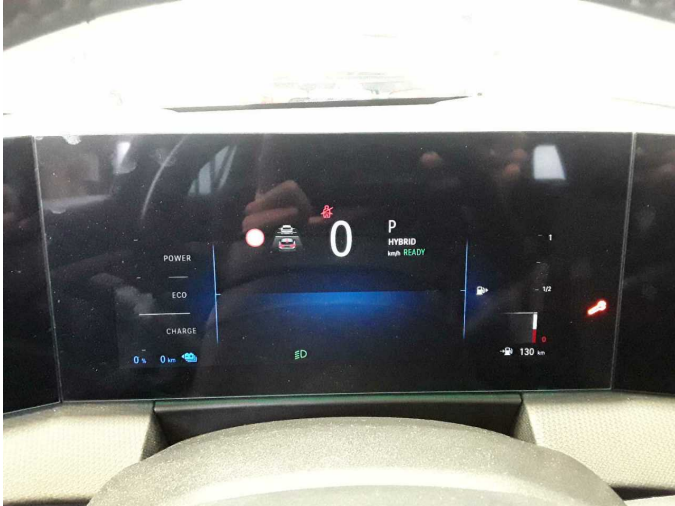


Figure 7: Instrument cluster



Figure 8: Instrument panel



Figure 9: Interior 360° view



Figure 10: Cargo area

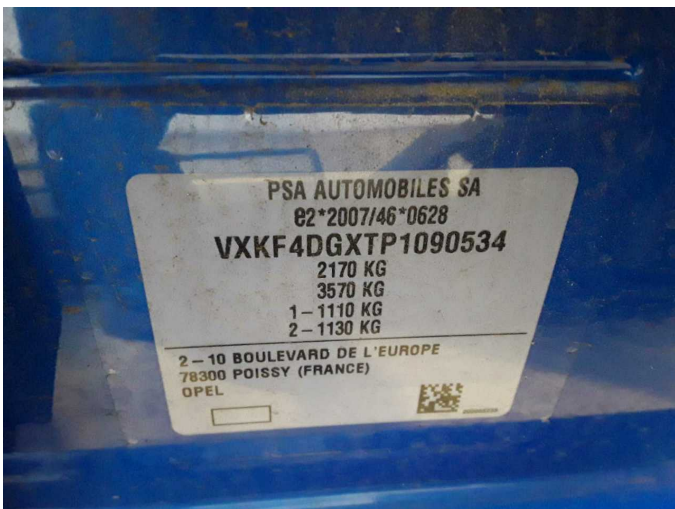


Figure 11: VIN



Figure 12: Mounted tyres



Figure 13: Documents



Figure 14: Documents



Figure 15: Misc.



Figure 16: Misc.

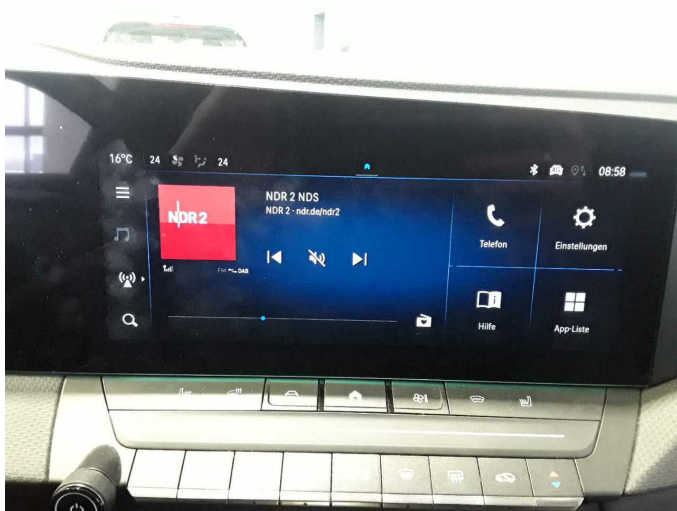


Figure 17: Misc.



Figure 18: Misc.



Figure 19: Misc.



Figure 20: Misc.



Figure 21: Misc.



Figure 22: Misc.



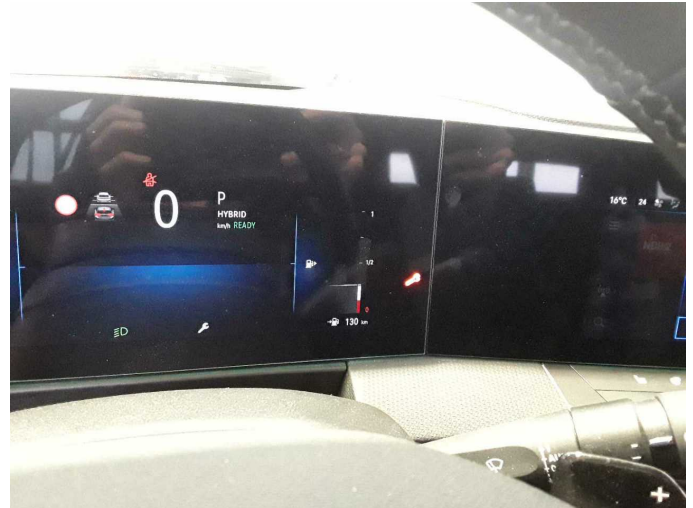
Figure 23: Misc.



Damage 1: Wheel / tyres: Alloy rim - rear left side - Corrosion - Loss in value



Damage 1: Wheel / tyres: Alloy rim - rear left side - Corrosion - Loss in value



Damage 2: Misc.: Inspection / maintenance - Due - Perform



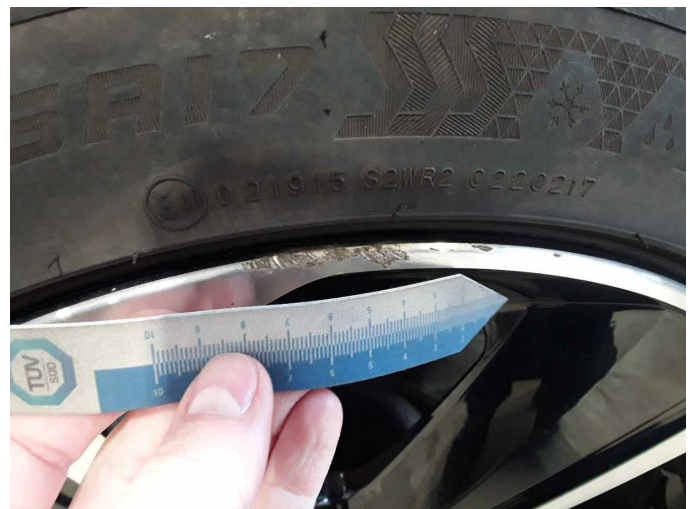
Damage 3: Wheel / tyres: Alloy rim - rear right side - Scratched - Replace



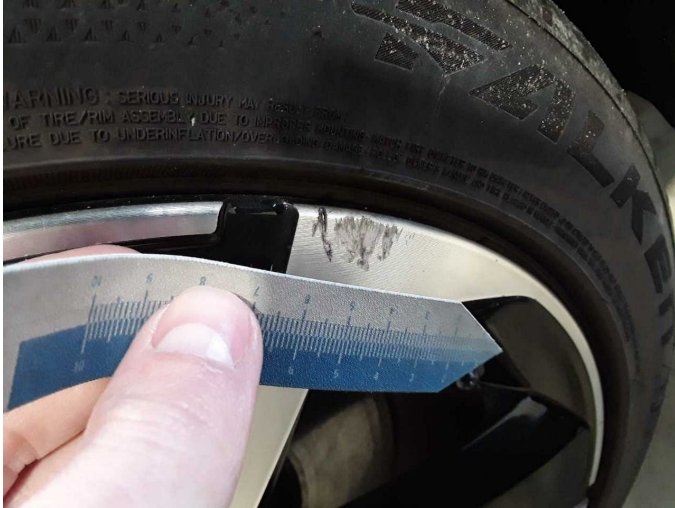
Damage 3: Wheel / tyres: Alloy rim - rear right side - Scratched - Replace



Damage 4: Wheel / tyres: Alloy rim - front left side - Scratched - Replace



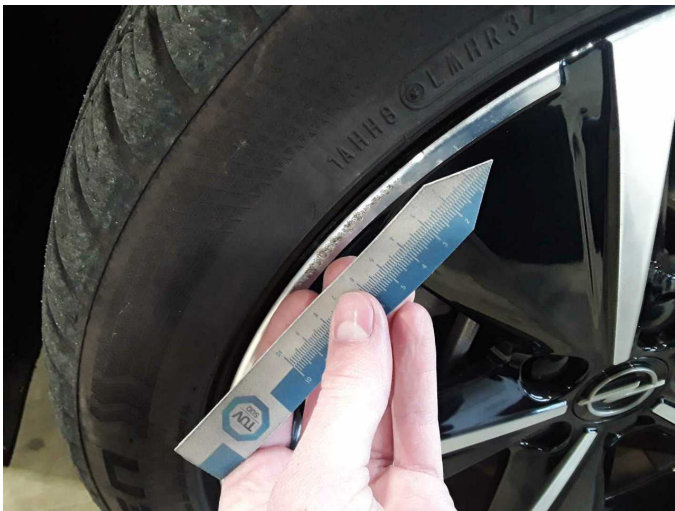
Damage 4: Wheel / tyres: Alloy rim - front left side - Scratched - Replace



Damage 4: Wheel / tyres: Alloy rim - front left side - Scratched - Replace



Damage 4: Wheel / tyres: Alloy rim - front left side - Scratched - Replace



Damage 4: Wheel / tyres: Alloy rim - front left side - Scratched - Replace



Damage 5: Wheel / tyres: Alloy rim - front right side - Scratched - Replace



Damage 5: Wheel / tyres: Alloy rim - front right side - Scratched - Replace



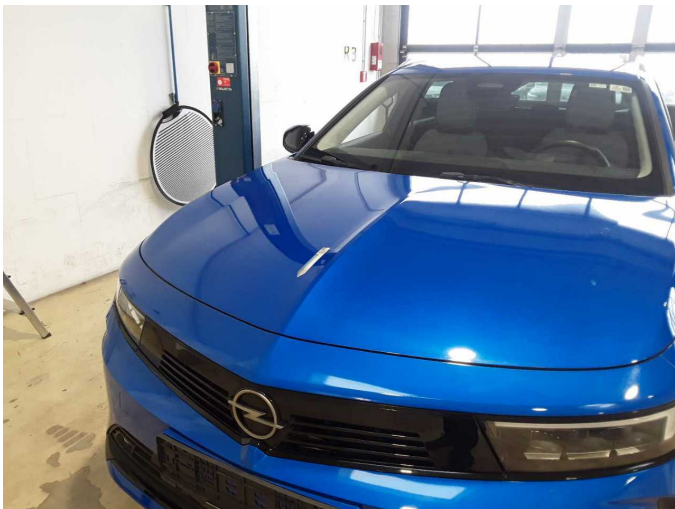
Damage 5: Wheel / tyres: Alloy rim - front right side - Scratched - Replace



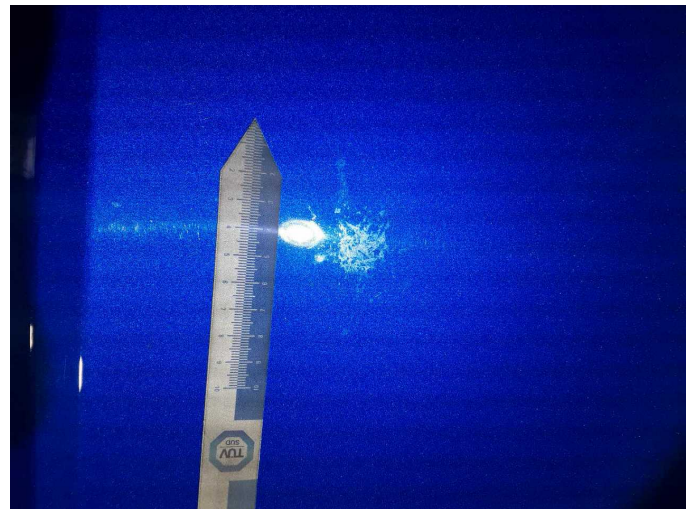
Damage 5: Wheel / tyres: Alloy rim - front right side - Scratched - Replace



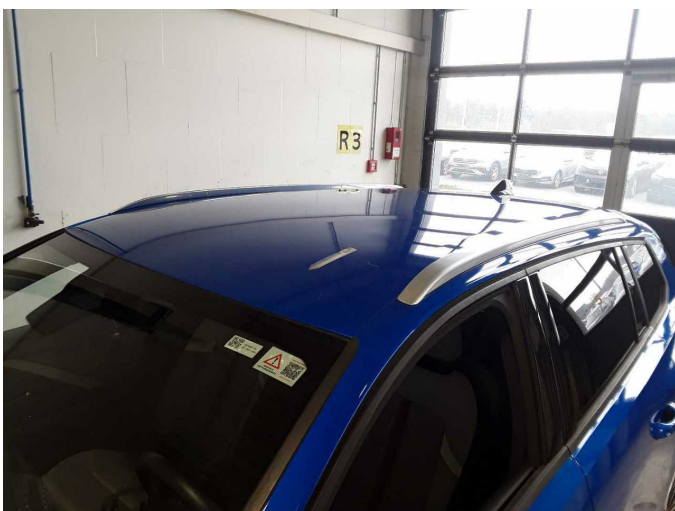
Damage 5: Wheel / tyres: Alloy rim - front right side - Scratched - Replace



Damage 6: Bonnet: Bonnet (Anätzung) - Paint defect - Paint



Damage 6: Bonnet: Bonnet (Anätzung) - Paint defect - Paint



Damage 7: Roof: Roof - Dent / paintcoat damage - Repair and paint



Damage 7: Roof: Roof - Dent / paintcoat damage - Repair and paint



Damage 7: Roof: Roof - Dent / paintcoat damage - Repair and paint