

Expertise

Protocol number: 46151837
Order No. / Reference: 26495093
Inspection date: 24 Jun 2026

Manufacturer: Ford

Model: Focus Turnier 1.5 EcoBlue Start-Stopp-System Aut.
COOL&CONNECT

VIN: WF0PXXGCHPNR10955



Vehicle details

Manufacturer / Type / Model / Equipment

Ford Focus Turnier 1.5 EcoBlue Start-Stopp-System Aut.
COOL&CONNECT

Vehicle Identification number	WF0PXXGCHPNR10955
Mileage (Read)	143,437 km
First registration	17 Nov 2022
Number of holders	1

Power / Engine displacement	88 kw / 1,499 ccm
Fuel type / Cylinder	Diesel / 4
Gearbox / Number of gears	Automatic / 8
Type of drive	Front drive
Type of vehicle	Station wagon

Colour / colour code	Frozen White
Doors / Seats	5 / 5
Upholstery type	Cloth
Colour of upholstery	Black-Anthracite



Vehicle details

Maintenance booklet / proof	digital proof / complete	Next maintenance in	41 %
Last service on / at	11/2025 at 125,739 km		
Key is / should be	2 / 2	FZG documents	ZB#2 (B) was available (copy), ZB#1 (S) was not available.
		Letter No.	GP468487
Previous damage / Accident	Detectable	Repainting	Detectable
Inspection conditions	sufficient	Lifting equipment / pit	No
Test drive	Not performed	Engine function test	Performed
Manufacturer key number/ type code number	8566 / BPV 00636		
Emission standard	EURO6;WLTP;AP;PI/CI; M, N1 I	fine dust sticker	
Permitted total weight	2,035 kg	Empty weight	

Tyres

Mounted tyres

#	Tyre size	Type of tyre	Manufacturer	Tread depth
1)	205/60 R16 92V	Summer tyres on Steel rim with wheel cover	Goodyear	4mm / 4mm
2)	205/60 R16 92V	Summer tyres on Steel rim with wheel cover	Goodyear	4mm / 4mm

Additional tyres

#	Tyre size	Type of tyre	Manufacturer	Tread depth
1)	205/60 R16 92H	Winter tyres on Light alloy	Pirelli	5mm / 5mm
2)	205/60 R16 92H	Winter tyres on Light alloy	Pirelli	5mm / 5mm

Replacement

Typ	Tyre size	Type of tyre	Manufacturer	Tread depth
	Tirefit	Expiration date 10/2026		

Legend: Tread depth information for the left tire is listed first, for the right tire it is listed second on the axle in the direction of travel.



Equipment

Standard equipment

- Airbag: Passenger airbag deactivation
- Exterior mirrors in body color, driver and passenger side, electrically adjustable and heated
- Tires: 6.5 J x 16 design wheels (4) with 205/60 R16 tires
- Hill start assist
- Roof rails, black
- Diesel particulate filter (DPF)
- Electronic Shifter
- Driver information system with on-board computer, color (10.7 cm screen diagonal)
- Electronic parking brake
- Luggage compartment cover
- Speed limiter
- Transmission: 8-speed automatic transmission
- Back window, heater
- Interior lighting with LED technology
- Isofix bracket
- Headrests: 2 front and 3 rear, height adjustable
- Leather gear knob
- Adjustable steering column
- Center console "Premium" front
- Front and rear parking pilot system
- Post-Collision Assist
- Radio: Ford SYNC 3 Light with AppLink, 8" touchscreen and DAB/DAB+
- Headlight assistant with day/night sensor
- Seats: Passenger seat height-adjustable, manually
- Seats: Map grid on the driver's and front passenger's seat backrests
- Start-stop system
- Carpet floor mats in the front
- Warning system for unfastened seat belts for the 1st and 2nd rows of seats

Extra equipment

- Paint finish: Frozen White
- Safety partition net for luggage compartment
- Seats: Ford ergonomic seat

- Anti-lock braking system (ABS) with electronic brake force distribution (EBD)
- Attachment points behind the second row of seats for mounting the safety partition net
- Fabric headliner
- Roof spoiler painted in car color
- Tachometer
- Electronic Safety and Stability Program (ESP)
- Lane keeping assist including lane keeping assist
- Electric windows front and rear
- FordPass Connect including eCall, live traffic information (only with navigation) and Wi-Fi hotspot
- Cruise control
- Illuminated glove compartment
- Rear window wiper
- Intelligent security system
- Air conditioning, manual
- LED headlights
- Steering wheel: 3-spoke design
- Make-up mirrors in driver and passenger sun visors
- MyKey key system (individually programmable second key)
- Upholstery: Cloth
- Pre-Collision Assist
- Tire repair kit
- Tire Pressure Monitoring System (TMPS)
- Electromechanical speed-dependent power steering
- Seats: Driver's seat height adjustable
- Seats: Rear seat backrest
- Seats: Front sports seats with enhanced lateral support
- 12-volt power outlet in the luggage compartment
- Lashing eyes in the luggage compartment
- Electronic immobilizer
- Central locking with remote control and remote luggage compartment release

- Navigation: Ford SYNC 3 with AppLink, 8" touchscreen and DAB/DAB+



Brief expert findings

Documents submitted	At the time of the inspection, the vehicle registration certificate Part 2 (title) was available, but the vehicle registration certificate Part 1 (document) was not. (Copy)
VIN comparison	The vehicle identification number (VIN) was read from the vehicle and its conformity with the submitted documents was confirmed by the undersigned during the inspection.
Inspection	The inspection conditions were sufficient for the assessment of the vehicle. No lifting equipment or pit was available for inspecting the vehicle. Therefore, inspection of the vehicle's underside was only possible to a limited extent.
Test drive	No test drive/shunting maneuver was carried out during the inspection of the vehicle.
Engine function test	An engine test run was performed.

Value reducing factors

No.	Component group	Description
1	Trim / covers	Floor mats - Holes - Replace
2	Engine	Engine cover - Damage caused by marten / rodent - Replace
3	Seat - front	Seat cover - left side - Burn hole (cigarettes) - Smart repair
4	Side panel - rear left side	Sill - Dent / paintcoat damage - Smart repair
5	Interior	Interior (Raucherauto) - Odour - Ozone treatment
6	Trim / covers	Carpet - front left side - Holes - Loss in value
7	Trim / covers	Roof lining - Holes - Loss in value
8	Vehicle glazing	Windscreen with lane departure assistant - Broken / torn - Replace

Previous damages

No.	Previous damage	Extent of damage (Net)
1	Front, Provided by user / customer, from 9 Jul 2024	1.210,41 €

Repainting

No.	Repainting
1	Side panel - rear right side, Professionally carried out, Invoice of repair done Non-existent

Paint coat thickness measurement

Side panel - rear right side	853 µm
------------------------------	--------

Order/Scope of Order

An order was placed to prepare a sales report for the described vehicle. This report includes the following:

- Description of key vehicle information
- Documentation of equipment features
(*Delivery by third-party service providers*)
- Documentation of damage, defects, missing parts
- Documentation of prior damage, unrepaired prior damage, repainting
- A brief visual or functional inspection of the equipment details, if possible.
(*Functional testing of driver assistance systems is not included in the scope of services!*)
- a photographic documentation of the vehicle



Basis for the order

This product is based on the guidelines for vehicle returns and valuations published by Alphabet Fleet GmbH. The expert makes the specific findings in each individual case objectively, within the framework of the prescribed standards, based on their own expertise.

The vehicle inspection takes place in a fully assembled, unassembled state.

Damage or defects that can only be detected during disassembly/diagnostic work or through further investigation remain within the realm of prognostic risk. An increased risk exists due to concealed defects caused by fraudulent misrepresentation and which were not identifiable by the expert.

Damage or defects resulting from normal use or wear and tear of the vehicle will be accepted in accordance with the applicable standard.

There was no explicit identification or monetary consideration of the expected features within the product.

Features which, in their nature and extent, slightly exceed normal use but do not constitute unacceptable damage, will be documented and indicated as signs of wear, if applicable.

Damage or defects that, according to the applicable standard, can no longer be attributed to normal use or wear and tear are listed under "Value Reducing Factors" in the product description.

Depending on the product specification, a monetary ID can be provided. If this takes place, the costs can be 100% d or pro rata depending on the vehicle's age and mileage.

Previous damages

According to available information previous damages were repaired at the vehicle. Traces of repairs, which allow conclusions about the area of repair, were not recognizable during the inspection.

Comments

Die zusätzlichen Winterräder sind kein Bestandteil der Ausstattung.



Figure 1: Diagonal front (left)



Figure 2: Diagonal front (right)



Figure 3: Diagonal rear (left)



Figure 4: Diagonal rear (right)



Figure 5: Interior - front



Figure 6: Interior - rear



Figure 7: Instrument cluster



Figure 8: Instrument panel



Figure 9: Interior 360° view



Figure 10: Cargo area



Figure 11: VIN



Figure 12: Mounted tyres

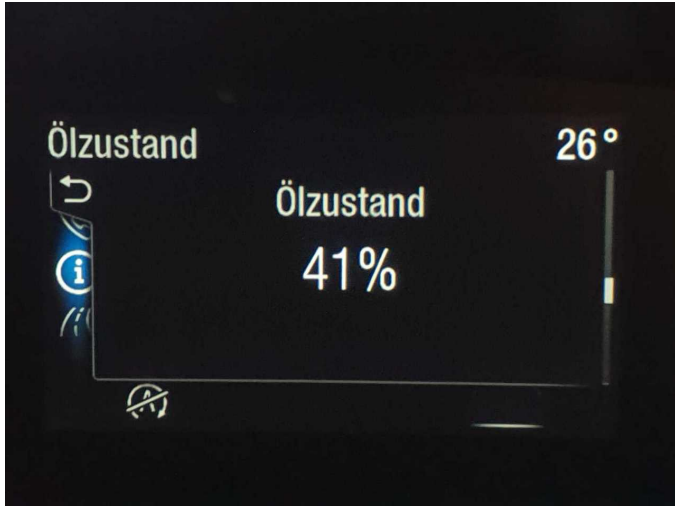


Figure 13: Documents

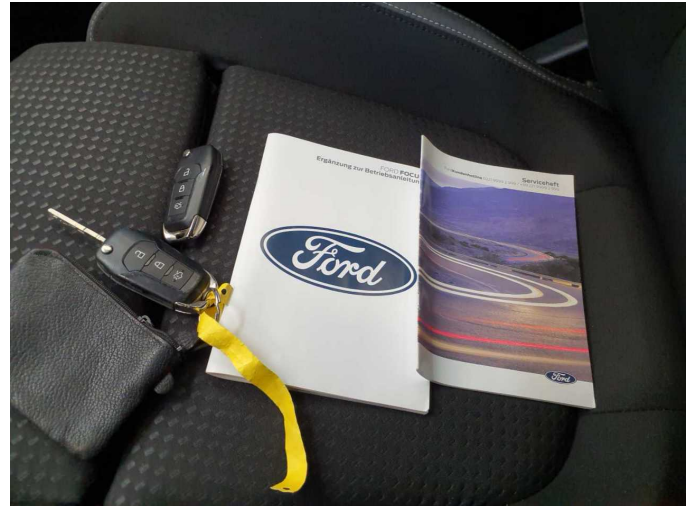


Figure 14: Documents

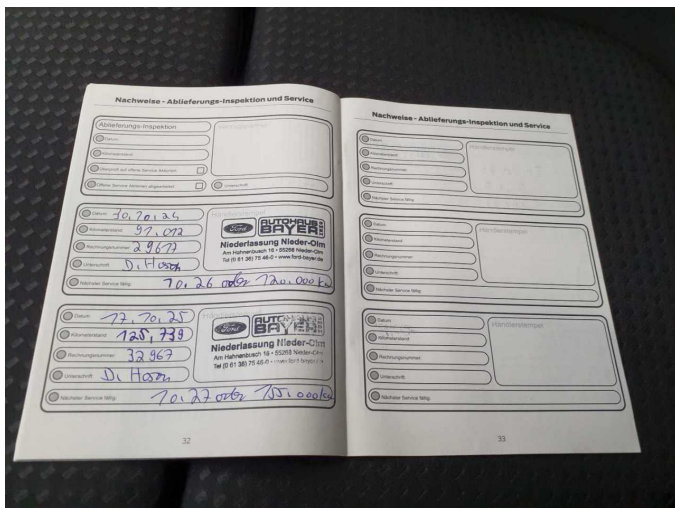


Figure 15: Documents

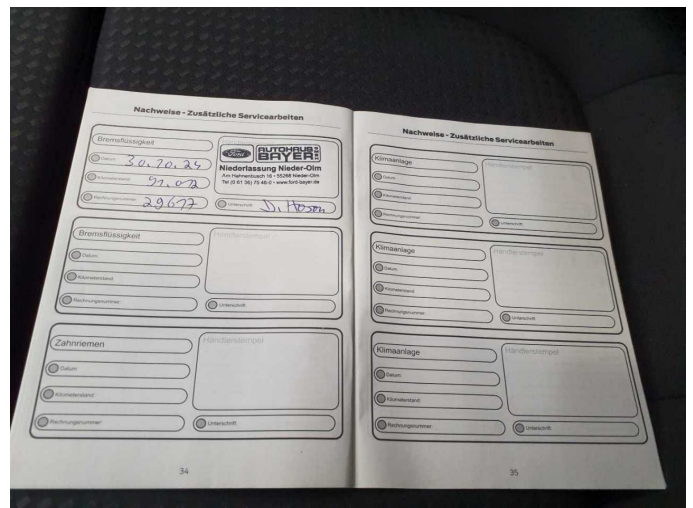


Figure 16: Documents



Figure 17: Additional tyres



Figure 18: Navigation



Figure 19: Misc.



Figure 20: Misc.



Figure 21: Misc.



Figure 22: Misc.

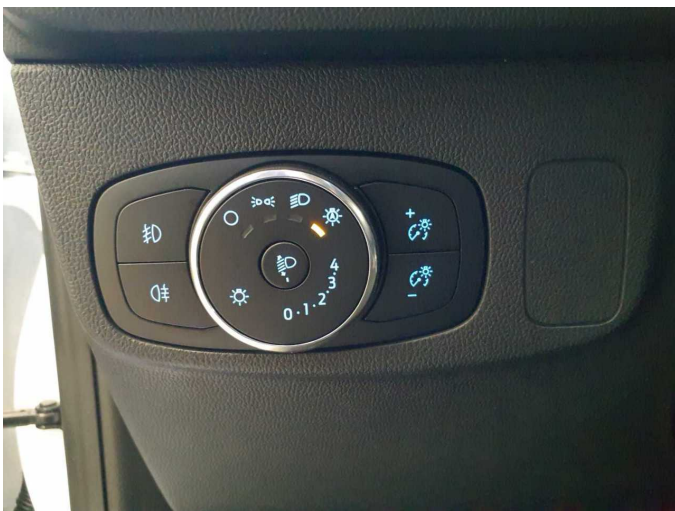


Figure 23: Misc.



Figure 24: Misc.



Figure 25: Misc.



Figure 26: Misc.

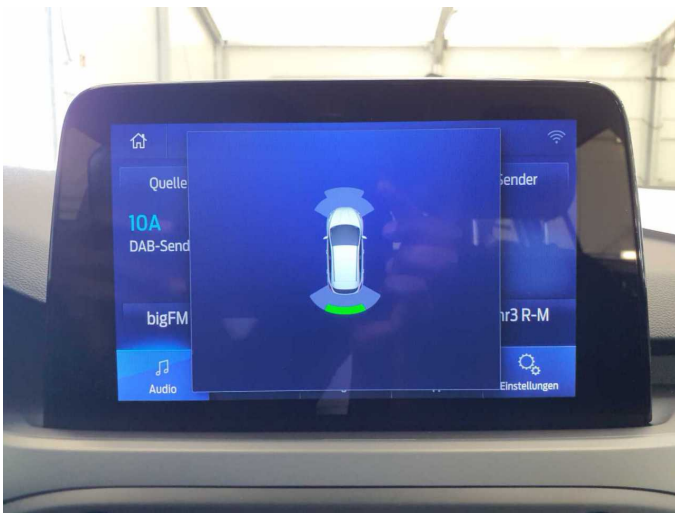


Figure 27: Misc.



Figure 28: Misc.



Figure 29: Misc.



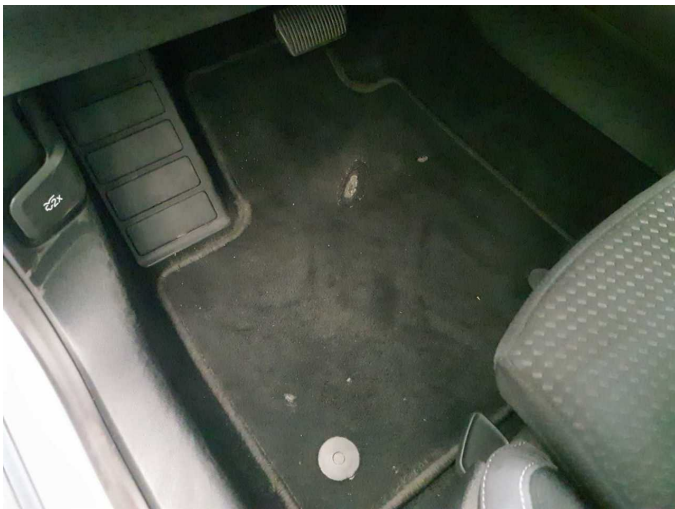
Figure 30: Misc.



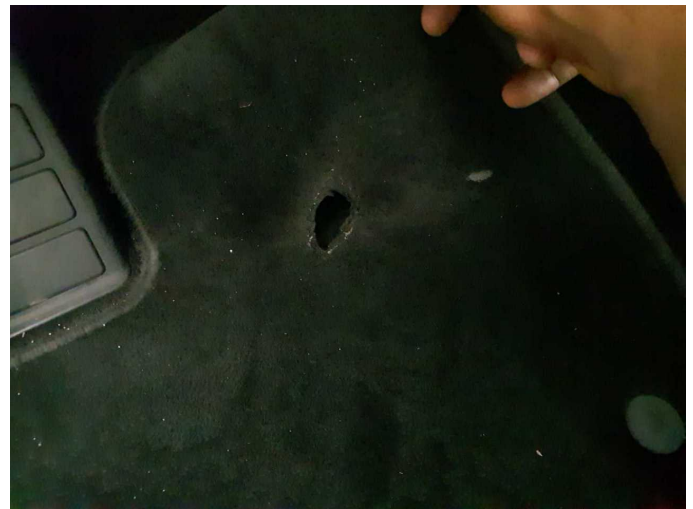
Figure 31: Misc.



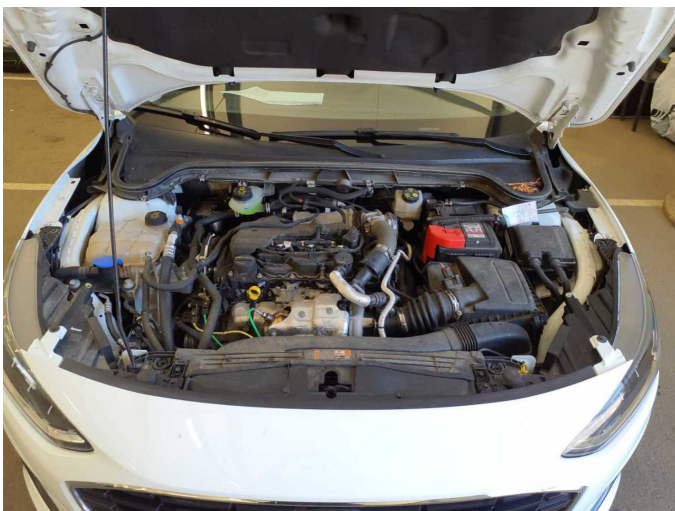
Figure 32: Misc.



Damage 1: Trim / covers: Floor mats - Holes - Replace



Damage 1: Trim / covers: Floor mats - Holes - Replace



Damage 2: Engine: Engine cover - Damage caused by marten / rodent - Replace



Damage 2: Engine: Engine cover - Damage caused by marten / rodent - Replace



Damage 3: Seat - front: Seat cover - left side - Burn hole (cigarettes) - Smart repair



Damage 3: Seat - front: Seat cover - left side - Burn hole (cigarettes) - Smart repair



Damage 4: Side panel - rear left side: Sill - Dent / paintcoat damage - Smart repair



Damage 4: Side panel - rear left side: Sill - Dent / paintcoat damage - Smart repair



Damage 4: Side panel - rear left side: Sill - Dent / paintcoat damage - Smart repair



Damage 4: Side panel - rear left side: Sill - Dent / paintcoat damage - Smart repair



Damage 4: Side panel - rear left side: Sill - Dent / paintcoat damage - Smart repair



Damage 6: Trim / covers: Carpet - front left side - Holes - Loss in value



Damage 6: Trim / covers: Carpet - front left side - Holes - Loss in value



Damage 7: Trim / covers: Roof lining - Holes - Loss in value



Damage 7: Trim / covers: Roof lining - Holes - Loss in value



Damage 8: Vehicle glazing: Windscreen with lane departure assistant - Broken / torn - Replace



Damage 8: Vehicle glazing: Windscreen with lane departure assistant - Broken / torn - Replace



Damage 8: Vehicle glazing: Windscreen with lane departure assistant - Broken / torn - Replace



Damage 8: Vehicle glazing: Windscreen with lane departure assistant - Broken / torn - Replace



Repainting 1: Side panel - rear right side



Repainting 1: Side panel - rear right side



Wartungshistorie

(gemäß Auftraggeber Informationen)

Fahrgestellnummer: WF0PXXGCHPNR10955
Hersteller / Modell: FORD FORD Focus Turnier 1.5 EcoBlue Start-Stopp-System Aut.
COOL&CONNECT

Datum	KM-Stand	Beschreibung
03.11.2025	125.739	AU; Bremse Sonstiges; Bremsklötze vorne; Bremsscheiben + Klötze v; Bremsscheiben vorne; Kraftstofffilter ern; Luftfiltereinsatz ern; Motoröl b. Wartung; Ölfilter ern; Regelwartungsdienst; Wartung Sonstiges
30.10.2024	91.012	Bremsflüssigkeit; Bremsflüssigkeit ern; Motoröl b. Wartung; Ölfilter ern; Regelwartungsdienst; Wartung Sonstiges
03.06.2024	75.595	Bremsklötze hinten; Bremsklötze vorne; Bremsscheiben + Klötze h; Bremsscheiben + Klötze v; Bremsscheiben hinten; Bremsscheiben vorne
05.02.2024	60.382	Kraftstofffilter ern; Luftfiltereinsatz ern; Motoröl b. Wartung; Ölfilter ern; Regelwartungsdienst; Wartung Sonstiges
12.09.2023	30.096	Motoröl b. Wartung; Ölfilter ern; Regelwartungsdienst; Reparatur Sonstiges; Wartung Sonstiges