

Expertise

Protocol number: 45524925
Order No. / Reference: 26380221
Inspection date: 11 May 2026

Manufacturer: Skoda

Model: Kodiaq 2.0 TDI 4x4 DSG Sportline

VIN: TMBLN9NSXN8008144



Vehicle details

Manufacturer / Type / Model / Equipment

Skoda Kodiaq 2.0 TDI 4x4 DSG Sportline

Vehicle Identification number TMBLN9NSXN8008144

Mileage (Read) 124,496 km

First registration 28 Apr 2022

Number of holders 1

Next periodical technical inspection 05/2027

(Report on hand)

Power / Engine displacement 147 kw / 1,968 ccm

Fuel type / Cylinder Diesel / 4

Gearbox / Number of gears Automatic / 7

Type of drive All-wheel drive

Type of vehicle SUV

Colour / colour code Stahlgrau (F7A)

Doors / Seats 5 / 5

Upholstery type Cloth

Colour of upholstery Black-Anthracite

Re-import no

Vehicle with smoke odor no

readiness to drive Roadworthy



Vehicle details

Maintenance booklet / proof	digital evidence / incomplete	Next maintenance in	507 Tag(e)
Last service on / at	02/2025 at 91,647 km		
Key is / should be	2 / 2	FZG documents	ZB#2 (B) was available (copy), ZB#1 (S) was not available.
		Letter No.	GG225417
Previous damage / Accident	None detectable	Repainting	Detectable
Inspection conditions	sufficient	Lifting equipment / pit	yes
Test drive	short drive on the company premises	Engine function test	Performed
readiness to drive	Roadworthy		
Manufacturer key number/ type code number	8004 / AVW 00363		
Emission standard	EURO6;WLTP;AP;PI/CI; M, N1 I	fine dust sticker	
Permitted total weight	2,410 kg	Empty weight	

Tyres

Mounted tyres

#	Tyre size	Type of tyre	Manufacturer	Tread depth
1)	235/55 R18 104H	Winter tires (with run-flat tires) on Light alloy	Pirelli	3mm / 3mm
2)	235/55 R18 104H	Winter tires (with run-flat tires) on Light alloy	Pirelli	5mm / 5mm

Additional tyres

#	Tyre size	Type of tyre	Manufacturer	Tread depth
1)	235/50 R19 99V	Summer tires (with run-flat tires) on Light alloy	Pirelli	5mm / 5mm
2)	235/50 R19 99V	Summer tires (with run-flat tires) on Light alloy	Pirelli	7mm / 7mm

Replacement

Typ	Tyre size	Type of tyre	Manufacturer	Tread depth
N	145/85 R18 103M	Summer tyres on Steel	Sonstige	3 mm

Legend: Tread depth information for the left tire is listed first, for the right tire it is listed second on the axle in the direction of travel.

TÜV SÜD Auto Partner GmbH
Wiesenring 2
04159 Leipzig

Inspection location
ARS Altmann AG Niederlassung
Wolnzach
Feierabendmühle 2
85283 Wolnzach



Equipment



Standard equipment

- 12V socket in the center console and in the trunk
- Storage compartments behind the wheel arches in the trunk
- Airbag, driver's knee airbag
- Airbag, front side airbags
- Permanent all-wheel drive
- Traction control (ASR)
- Electrically folding exterior mirrors including interior and driver's side mirrors with automatic dimming
- Hill start assist
- Hydraulic brake assist (HBA)
- Black headliner
- Dark Carbon decorative inlay
- Tachometer
- Easy Start (start-stop button)
- Electronic parking brake including auto-hold function
- ESC Electronic Stability Control
- Driving profile selection
- Electric windows front and rear
- High Beam Assist (Light Assist)
- front and rear floor mats
- Closed storage compartment on the driver's side
- Transmission: 7-speed dual-clutch transmission (DSG)
- Illuminated glove compartment
- Climatronic air conditioning (2-zone)
- Boot cover, roll-up and removable
- Paint finish: Special paint finish, solid color
- LED ambient lighting
- LED taillights in crystal glass look & LED license plate lights
- Reading lights at the front of the headliner
- Rear center armrest with cup holders and pass-through option
- Multifunction display in the instrument cluster, color
- Fog lights with integrated LED daytime running lights
- Stainless steel pedal design
- Progressive steering
- Radio accessories: 8 speakers
- Radio accessories: SmartLink
- Tire pressure monitoring
- Wheels: RunFlat tires with Seal technology
- Heated windshield washer nozzles, front
- Headlights washer / wiper system
- Kodiahq seat belts
- Seats: Adjustable lumbar support in the front seats
- Seats: Height-adjustable front seats
- Seats: Remote release of the rear seat backrests (2nd row) in the boot
- Speed limiter
- Sunset
- Front door sill trims
- Variable fastening concept in the trunk
- Storage compartment on the left wheel arch
- front aero windshield wipers
- Airbag, driver and passenger
- Airbag, head airbags
- Allergen filter
- Anti-lock braking system (ABS)
- Dashboard in black / black, door trim in black with microfiber inlay
- Electrically adjustable and heated exterior mirrors with integrated side indicators
- Care Connect: Proactive services (10-year term)
- Roof rails, black
- Diesel particulate filter
- Third brake light
- eCall
- Electronic transverse differential lock (XDS+)
- Driving light assistant and rain sensor
- Chassis: Adaptive chassis DCC including driving profile selection
- Front radar assistant including city emergency braking function with pedestrian detection
- Cruise control
- Tinted windows
- Isofix anchorage on the outer rear seats including top tether
- Front headrests are fixed, rear headrests are height-adjustable.
- LED matrix headlights and dynamic high beam assist (Light Assist)
- Steering wheel: Sport leather steering wheel with multifunction buttons including paddle shifters.
- Front center armrest, including storage compartment
- Engine drag torque control (MSR)
- Multi-collision brake
- Rear parking sensors
- Upholstery: Microfiber Sport-Black
- Radio: Bolero infotainment system
- Radio accessories: Digital radio reception DAB+
- Radio accessories: Wireless SmartLink
- Wheels: 19" alloy wheels Triglav anthracite polished
- Rear seat backrest split 60:40, foldable, longitudinally adjustable, backrest angle adjustable
- Electromechanical power steering
- Seats: Heated front and outer rear seats
- Seats: Electrically adjustable front seats with memory function
- Skoda Care Connect
- Sun visor on driver and passenger side with illuminated vanity mirror
- Telephone: Convenient hands-free telephone system including phone box
- Lashing eyes in the trunk
- Central locking with remote control



- Immobiliser

Extra equipment

- Swiveling trailer hitch (with electric release, including trailer stabilization)
- Climatronic air conditioning (3-zone) (fully automatic, separately adjustable for driver, front passenger and rear seats)
- Steering wheel: Heated sports steering wheel including paddle shifters
- Package: Family (Removable waste bin for the door panel - Sunshades for the rear side windows - Door edge protectors)
- Proactive occupant protection including rear side airbags
- Radio accessories: CANTON sound system (11 speakers, 1 subwoofer, digital equalizer, 575W)
- Wheels: 18" steel spare wheel, space-saving (tire 145/85 R18 incl. jack, wheel bolt wrench, load floor cover replaces tire mobility kit)
- Traveller Plus (DSG) assistance system (Adaptive Cruise Control ACC (control range up to 210 km/h) - Lane Assist, Blind Spot Detection and Parking Assist, Exit Warning - Adaptive Lane Guidance - Park Assist - Traffic Jam and Emergency Assist - Traffic Sign Recognition)
- Package: Business Columbus (Sportline, RS) (Dynamic radio-navigation system Columbus - 9.2" capacitive color display - Digital instrument cluster (Virtual Cockpit) - Driver fatigue detection - 230V socket and USB charging port (Type-C) on the back of the front center armrest - Acoustic glazing in the front doors - KESSY keyless entry - Electric tailgate operation including comfort opening - Luggage net partition - Infotainment Online (3-year subscription))
- Auxiliary heating
- 360° surround view camera (area view) including reversing camera

Brief expert findings

Documents submitted	At the time of the inspection, the vehicle registration certificate Part 2 (title) was available, but the vehicle registration certificate Part 1 (document) was not. (Copy)
VIN comparison	The vehicle identification number (VIN) was read from the vehicle and its conformity with the submitted documents was confirmed by the undersigned during the inspection.
Inspection	The inspection conditions were sufficient for the assessment of the vehicle. Lifting equipment and/or a pit were available for examining the vehicle.
Test drive	A short maneuvering and shunting exercise was carried out on the company premises.
Engine function test	An engine test run was performed.
readiness to drive	The vehicle was roadworthy at the time of inspection.

Value reducing factors

No.	Component group	Description
1	Side panel - rear left side	Sill - Dent / paintcoat damage - Smart repair
2	Rear bumper	Rear bumper - Scratch(es) - Paint
3	Rear bumper	Spoiler - Dent / paintcoat damage - Repair and paint
4	Roof	Roof - Damage by hail - repair according to calculation
5	Front bumper	Spoiler - Scratched - Replace

Wear and tear

No.	Component group	Description
1	Trim / covers	Floor mats - Holes - No deduction
2	Wheel / tyres	Tyre - front (Profiltiefe 3mm) - Does not meet the leasing specifications - No deduction
3	Bonnet	Bonnet - dent(s) - No deduction
4	Vehicle glazing	Windscreen - Stone chips - No deduction
5	Front bumper	Front bumper - Stone chips - No deduction
6	Wing mirror - left side	Cap - Scratch(es) - No deduction
7	Documents	Service book (Service bei 120000km fehlt) - Incomplete - No deduction

The vehicle shows signs of wear and tear commensurate with its age and use.



Repainting

No. Repainting

1 Mudguard - right side, Professionally carried out, Invoice of repair done Non-existent

Paint coat thickness measurement

Mudguard - right side 197 µm |

Order/Scope of Order

An order was placed to prepare a sales report for the described vehicle. This report includes the following:

- Description of key vehicle information
- Documentation of equipment features
(*Delivery by third-party service providers*)
- Documentation of damage, defects, missing parts
- Documentation of prior damage, unrepaired prior damage, repainting
- A brief visual or functional inspection of the equipment details, if possible.
(*Functional testing of driver assistance systems is not included in the scope of services!*)
- a photographic documentation of the vehicle

Basis for the order

This product is based on the guidelines for vehicle returns and valuations published by Alphabet Fleet GmbH. The expert makes the specific findings in each individual case objectively, within the framework of the prescribed standards, based on their own expertise.

The vehicle inspection takes place in a fully assembled, unassembled state.

Damage or defects that can only be detected during disassembly/diagnostic work or through further investigation remain within the realm of prognostic risk. An increased risk exists due to concealed defects caused by fraudulent misrepresentation and which were not identifiable by the expert.

Damage or defects resulting from normal use or wear and tear of the vehicle will be accepted in accordance with the applicable standard.

There was no explicit identification or monetary consideration of the expected features within the product.

Features which, in their nature and extent, slightly exceed normal use but do not constitute unacceptable damage, will be documented and indicated as signs of wear, if applicable.

Damage or defects that, according to the applicable standard, can no longer be attributed to normal use or wear and tear are listed under "Value Reducing Factors" in the product description.

Depending on the product specification, a monetary ID can be provided. If this takes place, the costs can be 100% d or pro rata depending on the vehicle's age and mileage.

Previous damages

No apparent prior damage that had been repaired could be found on the vehicle.

Comments

- Für den montierten Radsatz wurde kein Nachweis erbracht.
- Winterradsatz ist kein Bestandteil des Auslieferungsumfanges.



Figure 1: Diagonal front (left)



Figure 2: Diagonal front (right)



Figure 3: Diagonal rear (left)



Figure 4: Diagonal rear (right)



Figure 5: Interior - front



Figure 6: Interior - rear



Figure 7: Instrument cluster



Figure 8: Instrument panel



Figure 9: Interior 360° view



Figure 10: Cargo area

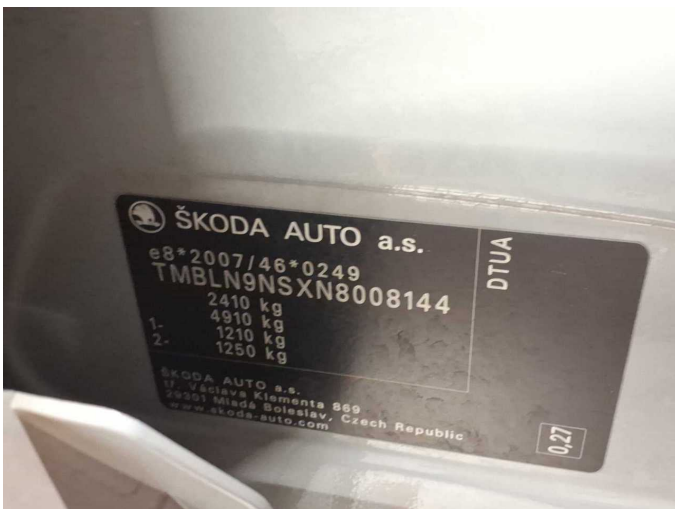


Figure 11: VIN



Figure 12: Mounted tyres



Figure 13: Documents



Figure 14: Documents



Figure 15: Documents



Figure 16: Additional tyres

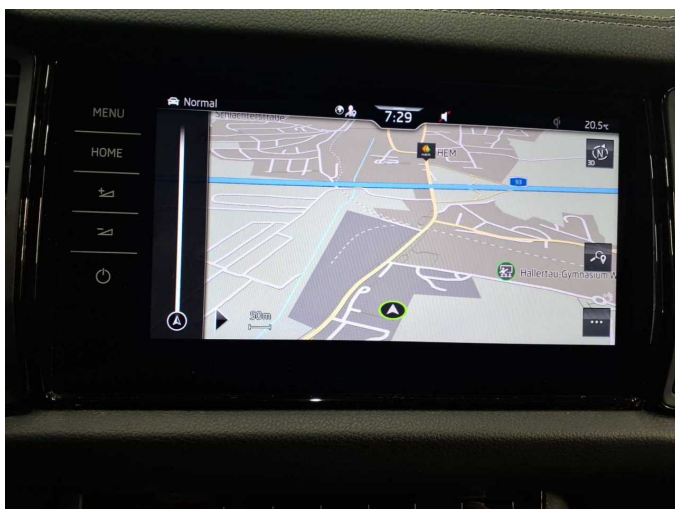


Figure 17: Navigation

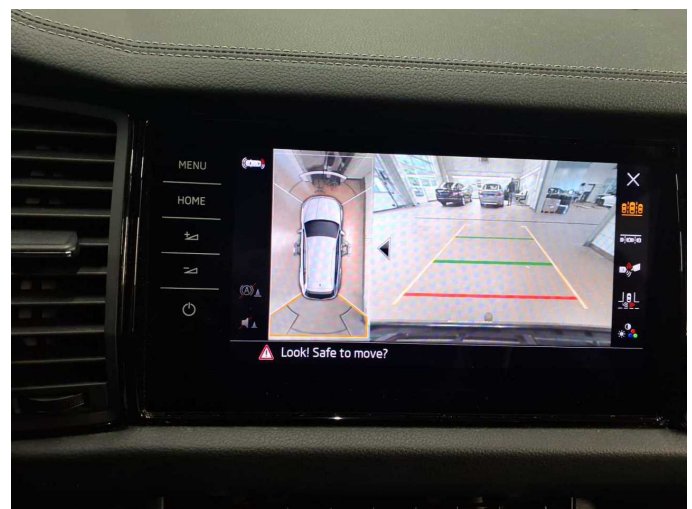


Figure 18: Misc.



Figure 19: Misc.



Figure 20: Misc.



Figure 21: Misc.

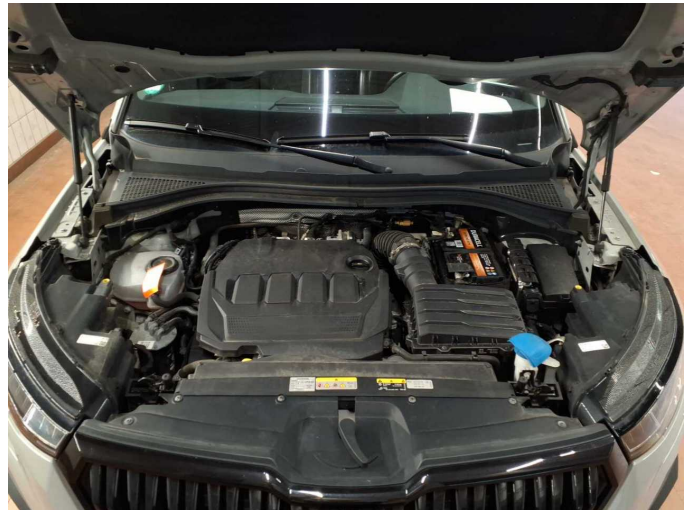


Figure 22: Misc.



Figure 23: Misc.

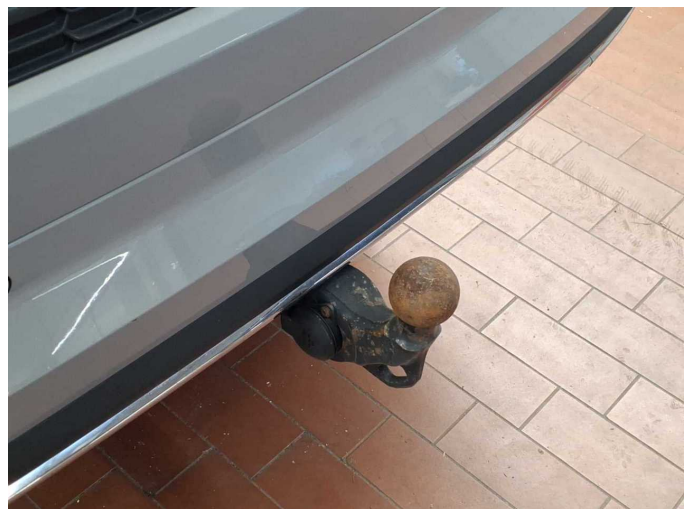


Figure 24: Misc.



Figure 25: Misc.



Figure 26: Misc.



Figure 27: Misc.



Figure 28: Misc.



Figure 29: Misc.



Figure 30: Misc.



Figure 31: Misc.



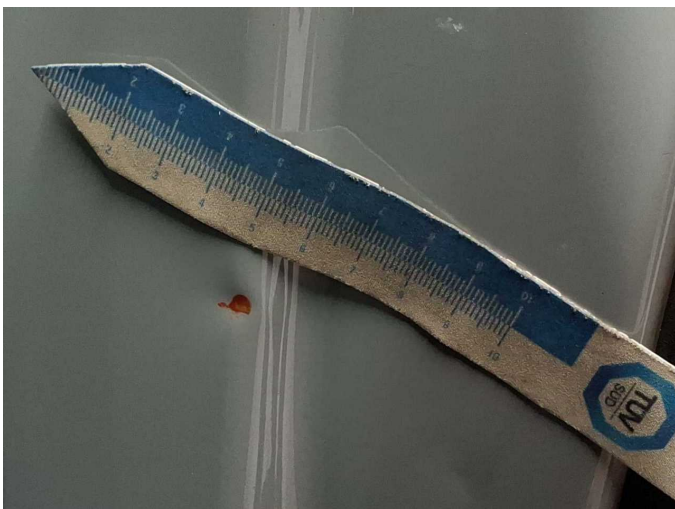
Damage 1: Side panel - rear left side: Sill - Dent / paintcoat damage - Smart repair



Damage 1: Side panel - rear left side: Sill - Dent / paintcoat damage - Smart repair



Damage 1: Side panel - rear left side: Sill - Dent / paintcoat damage - Smart repair



Damage 1: Side panel - rear left side: Sill - Dent / paintcoat damage - Smart repair



Damage 2: Rear bumper: Rear bumper - Scratch(es) - Paint



Damage 2: Rear bumper: Rear bumper - Scratch(es) - Paint



Damage 2: Rear bumper: Rear bumper - Scratch(es) - Paint



Damage 2: Rear bumper: Rear bumper - Scratch(es) - Paint



Damage 2: Rear bumper: Rear bumper - Scratch(es) - Paint



Damage 2: Rear bumper: Rear bumper - Scratch(es) - Paint



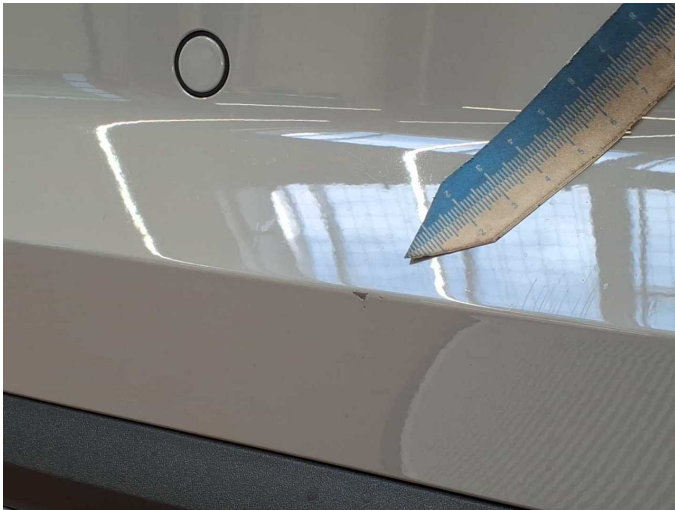
Damage 3: Rear bumper: Spoiler - Dent / paintcoat damage - Repair and paint



Damage 3: Rear bumper: Spoiler - Dent / paintcoat damage - Repair and paint



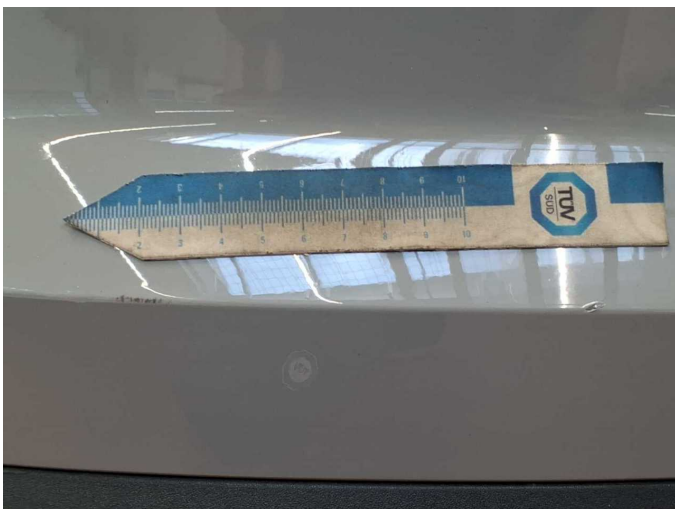
Damage 3: Rear bumper: Spoiler - Dent / paintcoat damage - Repair and paint



Damage 3: Rear bumper: Spoiler - Dent / paintcoat damage - Repair and paint



Damage 3: Rear bumper: Spoiler - Dent / paintcoat damage - Repair and paint



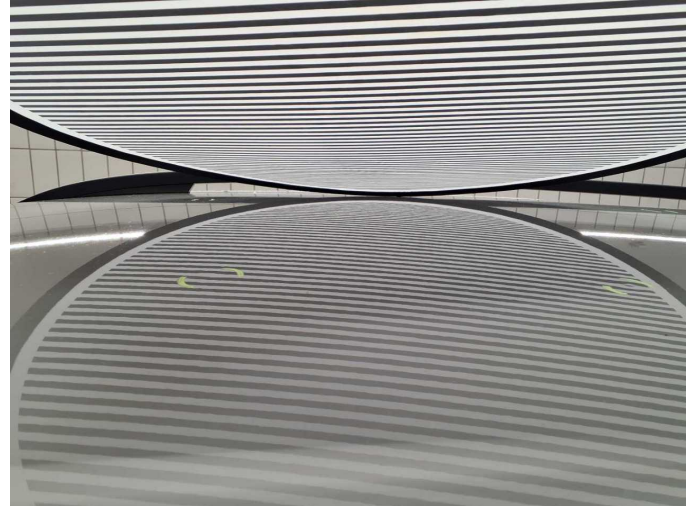
Damage 3: Rear bumper: Spoiler - Dent / paintcoat damage - Repair and paint



Damage 4: Roof: Roof - Damage by hail - repair according to calculation



Damage 4: Roof: Roof - Damage by hail - repair according to calculation



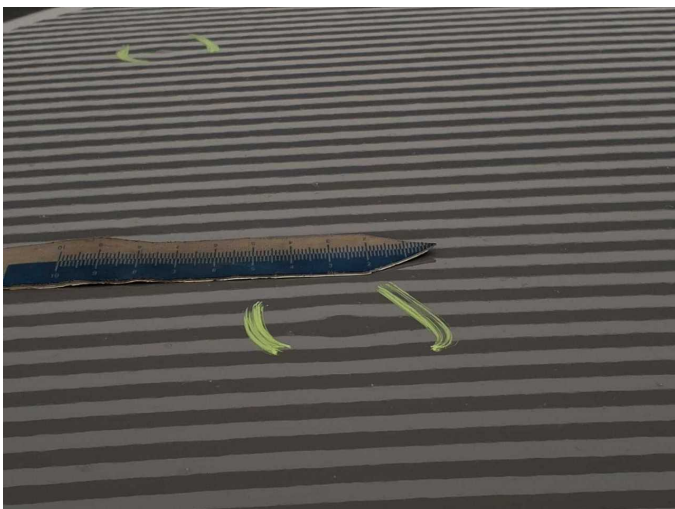
Damage 4: Roof: Roof - Damage by hail - repair according to calculation



Damage 4: Roof: Roof - Damage by hail - repair according to calculation



Damage 4: Roof: Roof - Damage by hail - repair according to calculation



Damage 4: Roof: Roof - Damage by hail - repair according to calculation



Damage 5: Front bumper: Spoiler - Scratched - Replace



Damage 5: Front bumper: Spoiler - Scratched - Replace



Damage 5: Front bumper: Spoiler - Scratched - Replace



Damage 5: Front bumper: Spoiler - Scratched - Replace



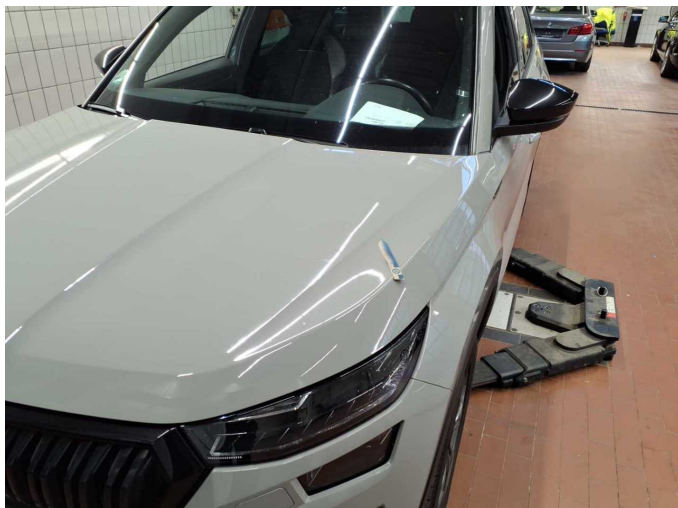
Damage 5: Front bumper: Spoiler - Scratched - Replace



Damage 5: Front bumper: Spoiler - Scratched - Replace



Wear and tear 3: Bonnet: Bonnet - dent(s) - No deduction



Wear and tear 3: Bonnet: Bonnet - dent(s) - No deduction



Wear and tear 6: Wing mirror - left side: Cap - Scratch(es) - No deduction



Repainting 1: Mudguard - right side



Wartungshistorie

(gemäß Auftraggeber Informationen)

Fahrgestellnummer: TMBLN9NSXN8008144
Hersteller / Modell: SKODA SKODA Kodiaq 2.0 TDI 4x4 DSG Sportline

Datum	KM-Stand	Beschreibung
02.05.2025	99.028	AU
03.02.2025	91.647	Kraftstofffilter ern; Luftfiltereinsatz ern; Motoröl b. Wartung; Ölfilter ern; Regelwartungsdienst; Systemtest/Eigendiagnose; Wartung Sonstiges
23.02.2024	60.215	Bremse Sonstiges; Bremsflüssigkeit; Bremsflüssigkeit ern; Bremsklötze hinten; Bremsklötze vorne; Bremsscheiben hinten; Bremsscheiben vorne; Getriebeöl ern/prüfen; Motoröl b. Wartung; Ölfilter ern; Ölwechsel - Hinterachse; Regelwartungsdienst; Reparatur Sonstiges; Wartung Sonstiges
25.04.2023	30.173	Motoröl b. Wartung; Ölfilter ern; Regelwartungsdienst; Wartung Sonstiges