

Expertise

Protocol number: 46311265
Order No. / Reference: 26468623
Inspection date: 2 Jul 2026

Manufacturer: Mercedes-Benz

Model: C 200 d T 9G-TRONIC AMG Line

VIN: W1KAH0DB6PF113411



Vehicle details

Manufacturer / Type / Model / Equipment

Mercedes-Benz C 200 d T 9G-TRONIC AMG Line

Vehicle Identification number	W1KAH0DB6PF113411
Mileage (Read)	61,583 km
First registration	10 May 2023
Number of holders	1
Next periodical technical inspection (Report on hand)	05/2028

Power / Engine displacement	120 kw / 1,993 ccm
Fuel type / Cylinder	Hybrid Diesel / E / 4
Gearbox / Number of gears	Automatic / 9
Type of drive	Rear drive
Type of vehicle	Station wagon

Colour / colour code	Sodalithblau Metallic
Doors / Seats	5 / 5
Upholstery type	Alcantara / Leather
Colour of upholstery	Black

readiness to drive	Not roadworthy / moveable
---------------------------	------------------------------



Vehicle details

Maintenance booklet / proof	digital proof / complete	Next maintenance in	99 Tag(e)
Last service on / at	08/2025 at 46,637 km		
Key is / should be	2 / 2	FZG documents	ZB#2 (B) was available (copy), ZB#1 (S) was not available.
		Letter No.	GV671609
Previous damage / Accident	Detectable	Repainting	Detectable
Inspection conditions	sufficient	Lifting equipment / pit	No
Test drive	Not performed	Engine function test	Performed
readiness to drive	Not roadworthy / moveable		
Manufacturer key number/ type code number	2222 / BDF 00273		
Emission standard	EURO6;WLTP;AP;PI/CI; M, N1 I	fine dust sticker	
Permitted total weight	2,400 kg	Empty weight	

Tyres

Mounted tyres

#	Tyre size	Type of tyre	Manufacturer	Tread depth
1)	225/45 R18 95Y	Summer tyres on Light alloy	Michelin	5mm / 5mm
2)	245/40 R18 97Y	Summer tyres on Light alloy	Michelin	5mm / 5mm

Additional tyres

#	Tyre size	Type of tyre	Manufacturer	Tread depth
1)	225/45 R18 95H	Winter tyres on Light alloy	Goodyear	7mm / 7mm
2)	225/45 R18 95H	Winter tyres on Light alloy	Goodyear	5mm / 5mm

Legend: Tread depth information for the left tire is listed first, for the right tire it is listed second on the axle in the direction of travel.



Equipment

Standard equipment

- Airbag for driver and front passenger
- Airbag: Center airbag
- Airbag: Windowbag for driver and front passenger
- AMG floor mats
- Left and right exterior mirrors are heated and electrically adjustable
- Brake system with larger brake discs on the front axle
- black roof rails
- Double cup holder at the front
- EASY-PACK tailgate
- Electronic Stability Program (ESP)
- Electric windows (4-way)
- Transmission: 9-speed automatic, 9G-TRONIC
- Heated rear window
- Instrument panel and door sills in ARTICO man-made leather in black nappa look
- Mechanical child safety lock for the rear doors
- Rear headrests (3)
- Cargo area cover including EASY-PACK safety net
- Steering wheel: Multifunction sports steering wheel in Nappa leather
- Package: Storage
- Upholstery: ARTICO leatherette/MICROCUT microfiber
- Radio: MBUX
- Radio accessories: Communication module (LTE) for using Mercedes me connect services
- Remote Services Plus
- Seats: Rear seat backrests foldable
- Cruise control
- Electronic immobilizer
- Decorative elements, metal structure
- Airbag: Automatic passenger airbag deactivation
- Airbag: Side airbag for driver and front passenger
- Ambient lighting with 64 light colors
- AMG sports pedal assembly made of brushed stainless steel with rubber studs
- Basic services
- Brake assist, active
- Diesel particulate filter
- DYNAMIC SELECT
- ECO start/stop function
- Chassis: Sport chassis with sport direct steering
- Speed Limit Assistant
- rear window wiper
- Interior headliner fabric crystal grey
- ISOFIX child seat attachment with top tether in the rear
- KEYLESS-GO start function
- THERMATIC automatic climate control with 1 climate zone
- Front headrests
- LED High Performance Headlights
- Mercedes-Benz emergency call system
- Center console in high-gloss black
- Package: Interior lighting package
- Radio: Extended MBUX functions
- Radio accessories: Digital radio (DAB)
- Radio accessories: Central display
- Tire pressure monitoring system (TPMS)
- Windscreen wipers with rain sensor
- Lane Keeping Assist, active
- High-visibility vest for drivers
- Central locking with remote control



Extra equipment

- Ambient lighting with 64 light colors (with directly illuminated light lines.)
- Chassis: AGILITY CONTROL chassis with selective damping system and lowered suspension
- Fingerprint scanner (color-illuminated fingerprint scanner in the control bar below the OLED media display - two fingerprints can be stored per user - faster access replaces PIN entry - protects personal data such as profiles as well as office and payment functions)
- Head-up display
- Black fabric headliner
- THERMOTRONIC automatic climate control with 4 climate zones (controlled via the central display or the climate control unit in the center console, with Auto button for automatic control of temperature, air volume and air distribution - control unit on the back of the center console - automatic recirculation when a tunnel is detected via GPS, only in conjunction with navigation system - sensors for detecting e.g. inside/outside temperature - fine dust activated carbon filter - ventilation system - dew point sensors - residual heat function for efficient use of engine waste heat)
- Package: Driving Assistance Package Plus (Active Distance Assist DISTRONIC, Active Speed Limit Assist, Extended Automatic Restart on Highways, Route-Based Speed Adaptation with Traffic Jam End Function, Active Traffic Jam Assist, Active Steering Assist, Active Lane Change Assist, Active Emergency Stop Assist, Emergency Lane Function, Active Brake Assist with Vehicle, Bicycle and Pedestrian Detection; Intersection Function, Turn Function, Traffic Jam End Emergency Braking Function, Evasive Steering Assist, Active Lane Keeping Assist, Active Blind Spot Assist, PRE-SAFE Impulse Side)
- Package: Luggage compartment comfort (electrically folding rear seat backrests via switches on the right and left in the control panel in the load compartment - electric opening and closing of the load compartment roller blind - 12V socket on the left in the control panel in the load compartment - reversible mat, with a rubberized, non-slip side and a soft velour side)
- Package: Mirror package (both exterior mirrors electrically folding (button in the driver's door control panel) - interior mirror and exterior mirror on the driver's side automatically dimming continuously - ambient lighting of the exterior mirror to illuminate the entry area with projection of the Mercedes-Benz logo)
- Wheels: 45.7 cm (18") AMG light-alloy wheels in 5-spoke design (aerodynamically optimized, painted black and high-sheen finish with front axle 225/45 R 18 on 7.5 J x 18 ET 40, rear axle 245/40 R 18 on 8.5 J x 18 ET 52)
- Heated windshield washer system
- Seats: Sports seats
- Type designation removed from trunk lid
- Heat-insulating dark tinted glass
- ENERGIZING AIR CONTROL (Air quality sensor and one fine dust sensor each for indoor and outdoor use - Fine dust filtration with 2 filters - Activated carbon-based indoor air filter with filter layers against fine dust (PM2.5) and nitrogen oxides (NOx) or sulfur dioxides (SO2) as well as pollen - Automatic recirculation or fresh air switching depending on the measured air quality, taking into account the overall climate comfort control system - Air quality menu in the MBUX multimedia system to illustrate the measured values)
- KEYLESS-GO (access and driving authorization system)
- Fuel tank with larger capacity
- Paint finish: Metallic
- Steering wheel: Steering wheel heating
- Center console metal structure
- Package: Advanced Parking Package (12 ultrasonic sensors - 360° camera - Active Parking Assist with PARKTRONIC: detects free parking spaces, assisted parking, visual and acoustic warning, display of camera and ultrasonic data in the media display - Cross traffic warning: can provide visual and acoustic warnings when reversing out of a parking space and, if necessary, automatically initiate emergency braking - Reverse maneuvering brake: can trigger a braking process - Drive-away assist)
- Package: High-End Infotainment Package (MBUX Navigation Premium (hard drive navigation, pre-installation for Live Traffic Information), Traffic Sign Assist, Smartphone Integration (connects the mobile phone wirelessly to the multimedia system via Apple CarPlay and Android Auto), Wireless charging system for mobile devices in the front, Driver display - 31.2 cm (12.3") color LCD display, Central display - 30.2 cm (11.9") touch display, MBUX Augmented Reality for navigation.)
- Package: Night (for T-Model with AMG Line exterior) (Radiator grille: diamond grille with silver pins and high-gloss black louvre (18") AMG light-alloy wheels in 5-spoke design, aerodynamically optimized, black-painted, high-sheen finish, with front axle 225/45 R18 on 7.5Jx18 ET40, rear axle 245/40 R18 on 8Jx18 ET52 AMG front apron with high-gloss black wing trim. Rear bumper with high-gloss black wing trim. Belt trim strip and window surrounds in high-gloss black. Exterior mirror housings in high-gloss black. Heat-insulating dark-tinted rear glass (from the B-pillar). Roof rails in black.)
- Radio accessories: Advanced sound system (with 9 speakers and 225 watts system power)
- Wheels: Complete summer wheel sets fitted at the factory
- Wheels: Winter complete set of wheels M+S 4x 45.7 cm (18") multi-spoke alloy wheels (black painted and polished with 225/45 R 18 on 7.5 J x 18 ET 40)
- High-visibility vests for drivers and passengers (one for each seat)



Brief expert findings

Documents submitted	At the time of the inspection, the vehicle registration certificate Part 2 (title) was available, but the vehicle registration certificate Part 1 (document) was not. (Copy)
VIN comparison	The vehicle identification number (VIN) was read from the vehicle and its conformity with the submitted documents was confirmed by the undersigned during the inspection.
Inspection	The inspection conditions were sufficient for the assessment of the vehicle. No lifting equipment or pit was available for inspecting the vehicle. Therefore, inspection of the vehicle's underside was only possible to a limited extent.
Test drive	No test drive/shunting maneuver was carried out during the inspection of the vehicle.
Engine function test	An engine test run was performed.
readiness to drive	The vehicle was not capable of driving under its own power at the time of inspection, but can be moved on its own axle with the aid of assistance.

Value reducing factors

No.	Component group	Description
1	Side panel - rear left side	Side panel - dent(s) - Smooth repair work
2	Door - front left side	Door edge - Scratch(es) - Smart repair
3	Roof	Roof rail - left side - dent(s) - Smooth repair work
4	Wheel / tyres	Tyre - front right side - Broken / torn - Replace
5	2nd wheel set	1 tyre - Broken / torn - Replace
6	2nd wheel set	1 alloy rim - Scratch(es) - Loss in value
7	Wheel / tyres	Alloy rim - front right side - Scratch(es) - Loss in value
8	Wheel / tyres	Alloy rim - rear right side - Scratch(es) - Loss in value

Wear and tear

No.	Component group	Description
1	Bonnet	Bonnet - Stone chips - No deduction
2	Front bumper	Front bumper - Stone chips - No deduction
3	Vehicle glazing	Windscreen - Stone chips - No deduction
4	Rear bumper	Rear bumper - Scratch(es) - No deduction

The vehicle shows signs of wear and tear commensurate with its age and use.

Previous damages

No.	Previous damage	Extent of damage (Net)
1	Side right, Provided by user / customer, from 28 Oct 2025	9.647,54 €

Repainting

No.	Repainting
1	Side panel - rear right side

Paint coat thickness measurement

Side panel - rear right side	209 µm
------------------------------	--------



Order/Scope of Order

An order was placed to prepare a sales report for the described vehicle. This report includes the following:

- Description of key vehicle information
- Documentation of equipment features
(Delivery by third-party service providers)
- Documentation of damage, defects, missing parts
- Documentation of prior damage, unrepaired prior damage, repainting
- A brief visual or functional inspection of the equipment details, if possible.
(Functional testing of driver assistance systems is not included in the scope of services!)
- a photographic documentation of the vehicle

Basis for the order

This product is based on the guidelines for vehicle returns and valuations published by Alphabet Fleet GmbH. The expert makes the specific findings in each individual case objectively, within the framework of the prescribed standards, based on their own expertise.

The vehicle inspection takes place in a fully assembled, unassembled state.

Damage or defects that can only be detected during disassembly/diagnostic work or through further investigation remain within the realm of prognostic risk. An increased risk exists due to concealed defects caused by fraudulent misrepresentation and which were not identifiable by the expert.

Damage or defects resulting from normal use or wear and tear of the vehicle will be accepted in accordance with the applicable standard.

There was no explicit identification or monetary consideration of the expected features within the product.

Features which, in their nature and extent, slightly exceed normal use but do not constitute unacceptable damage, will be documented and indicated as signs of wear, if applicable.

Damage or defects that, according to the applicable standard, can no longer be attributed to normal use or wear and tear are listed under "Value Reducing Factors" in the product description.

Depending on the product specification, a monetary ID can be provided. If this takes place, the costs can be 100% d or pro rata depending on the vehicle's age and mileage.

Previous damages

According to available information previous damages were repaired at the vehicle. Traces of repairs, which allow conclusions about the area of repair, were not recognizable during the inspection.

Comments

- Die Unterbodenbesichtigung war nur ebenerdig und eingeschränkt möglich.
- Mehrkosten möglich .



Figure 1: Diagonal front (left)



Figure 2: Diagonal front (right)



Figure 3: Diagonal rear (left)



Figure 4: Diagonal rear (right)



Figure 5: Interior - front

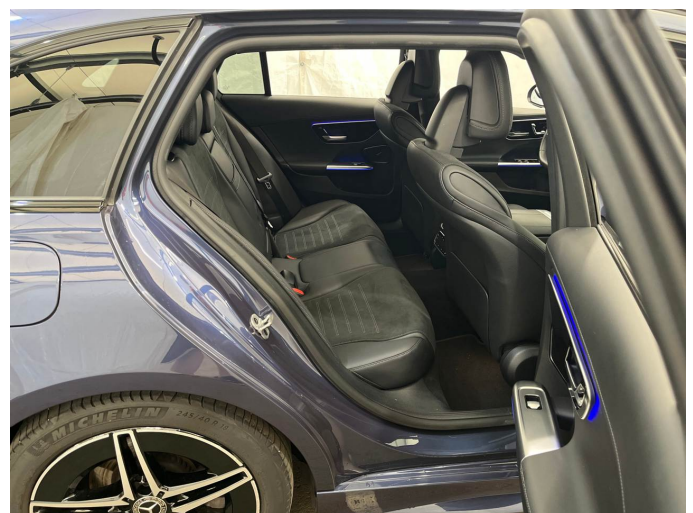


Figure 6: Interior - rear



Figure 7: Instrument cluster



Figure 8: Instrument panel



Figure 9: Interior 360° view



Figure 10: Cargo area



Figure 11: VIN



Figure 12: Mounted tyres



Figure 13: Documents

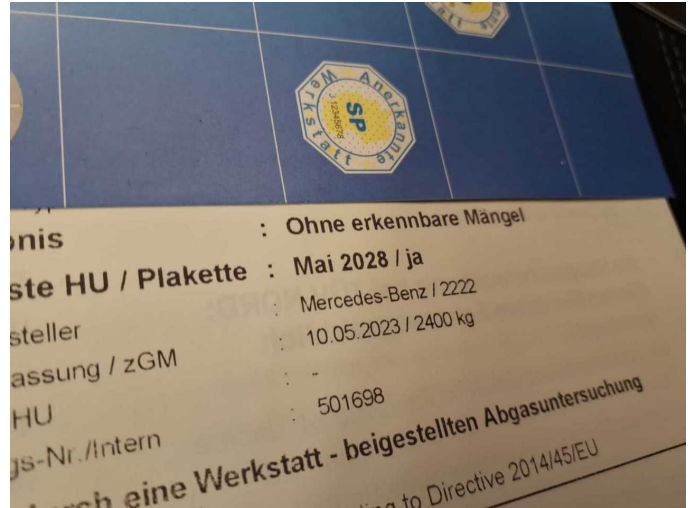


Figure 14: Documents



Figure 15: Documents



Figure 16: Additional tyres

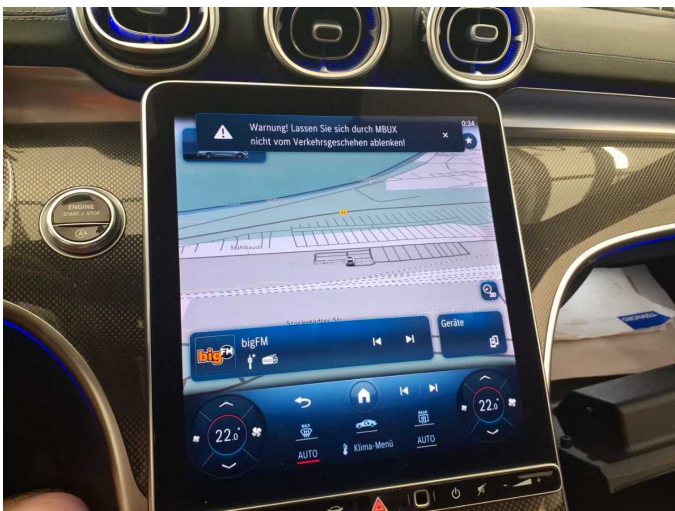


Figure 17: Navigation



Figure 18: Misc.



Figure 19: Misc.



Figure 20: Misc.



Figure 21: Misc.

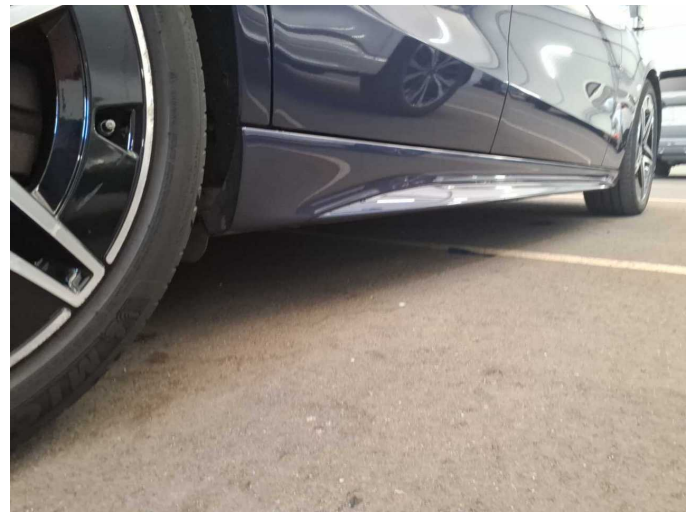


Figure 22: Misc.

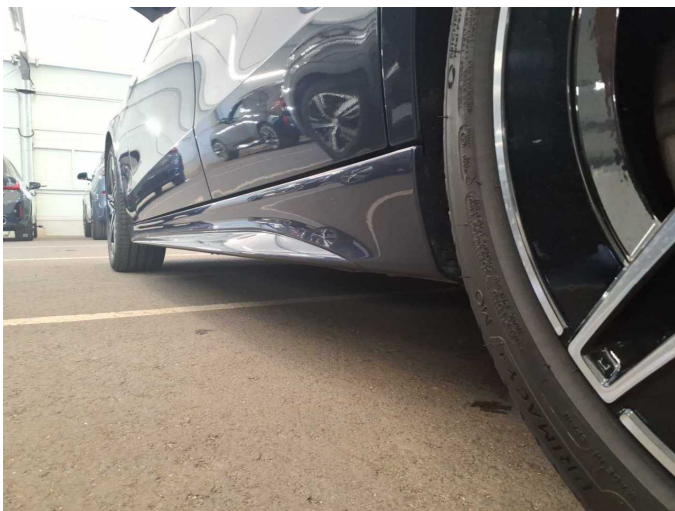


Figure 23: Misc.



Figure 24: Misc.



Figure 25: Misc.



Figure 26: Misc.

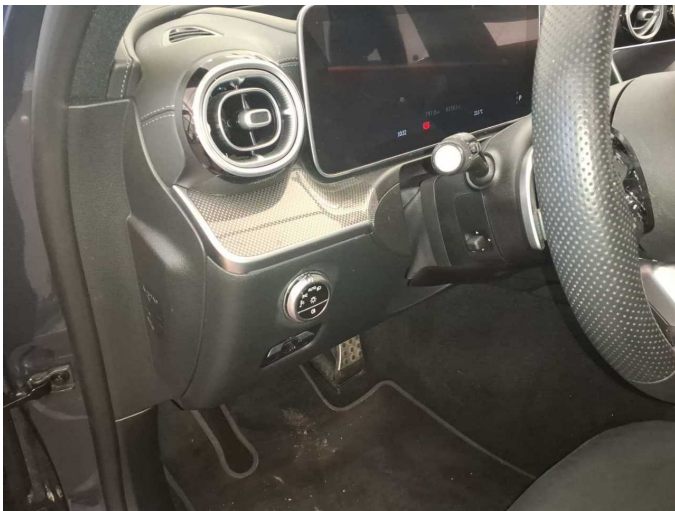


Figure 27: Misc.



Figure 28: Misc.



Figure 29: Misc.



Figure 30: Misc.



Figure 31: Misc.

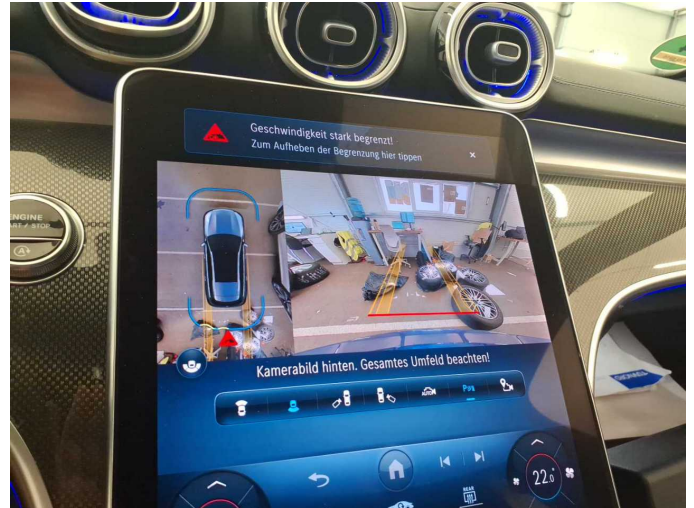


Figure 32: Misc.



Figure 33: Misc.

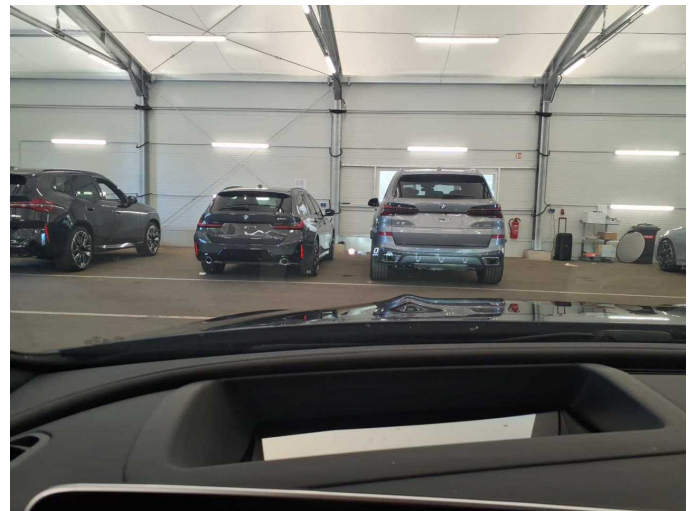


Figure 34: Misc.

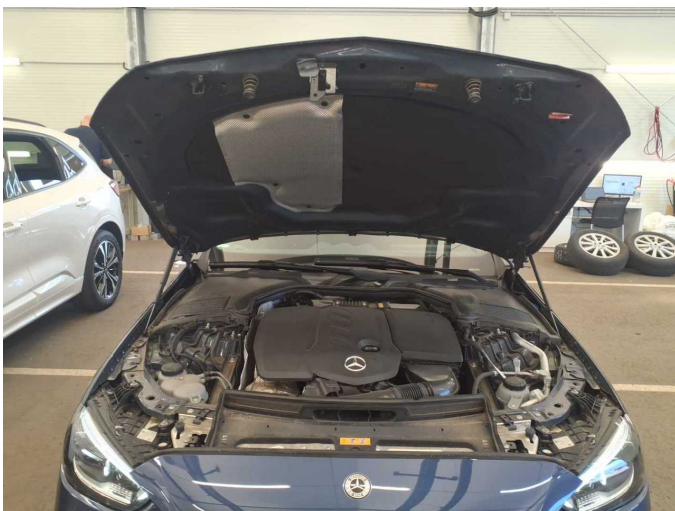


Figure 35: Misc.

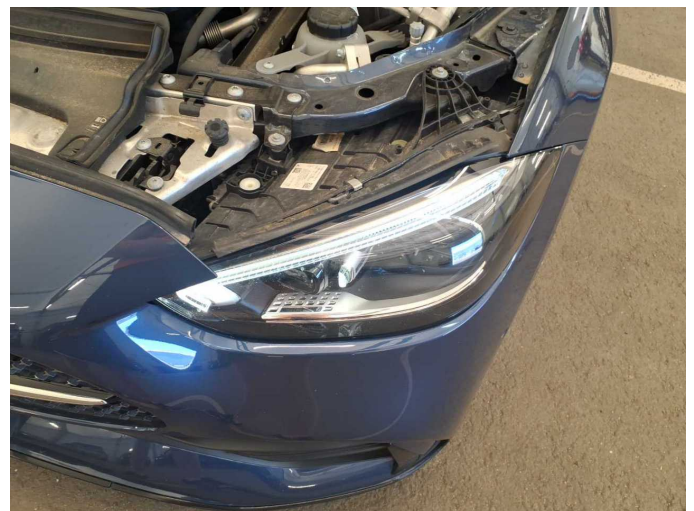


Figure 36: Misc.



Damage 1: Side panel - rear left side: Side panel - dent(s) - Smooth repair work



Damage 1: Side panel - rear left side: Side panel - dent(s) - Smooth repair work



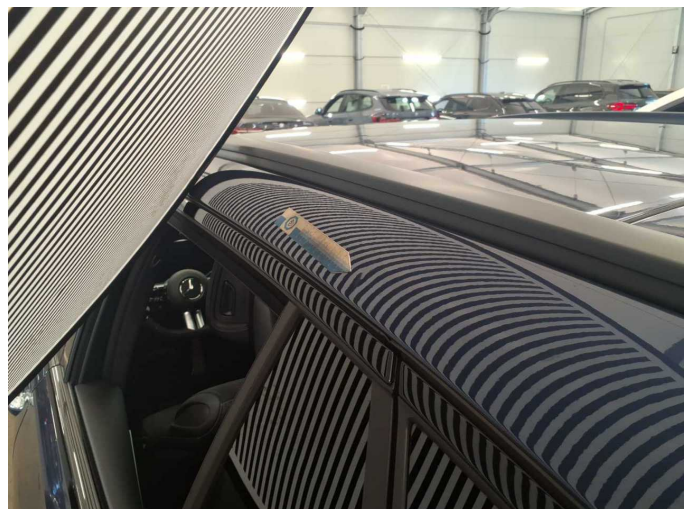
Damage 2: Door - front left side: Door edge - Scratch(es) - Smart repair



Damage 2: Door - front left side: Door edge - Scratch(es) - Smart repair



Damage 3: Roof: Roof rail - left side - dent(s) - Smooth repair work



Damage 3: Roof: Roof rail - left side - dent(s) - Smooth repair work



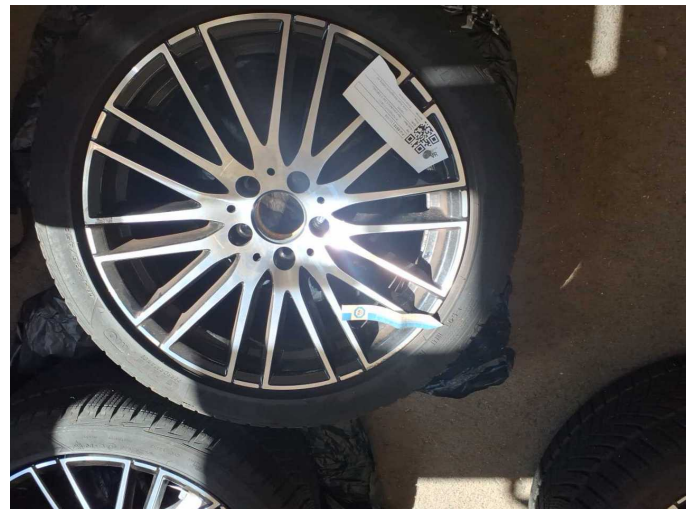
Damage 4: Wheel / tyres: Tyre - front right side - Broken / torn - Replace



Damage 4: Wheel / tyres: Tyre - front right side - Broken / torn - Replace



Damage 5: 2nd wheel set: 1 tyre - Broken / torn - Replace



Damage 5: 2nd wheel set: 1 tyre - Broken / torn - Replace



Damage 6: 2nd wheel set: 1 alloy rim - Scratch(es) - Loss in value



Damage 6: 2nd wheel set: 1 alloy rim - Scratch(es) - Loss in value



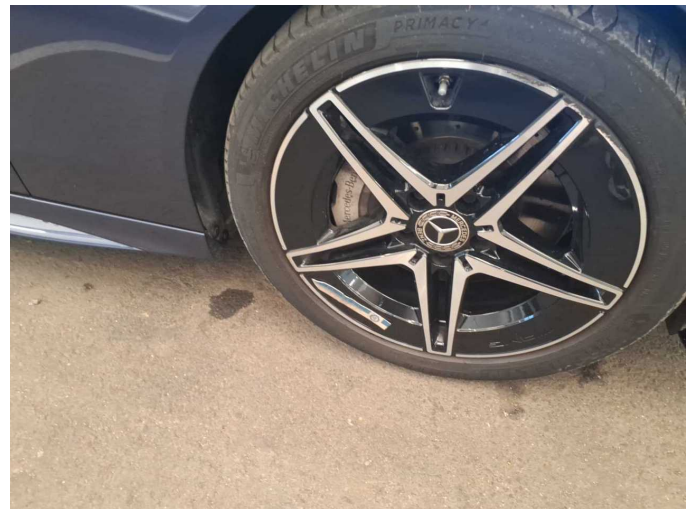
Damage 6: 2nd wheel set: 1 alloy rim - Scratch(es) - Loss in value



Damage 6: 2nd wheel set: 1 alloy rim - Scratch(es) - Loss in value



Damage 7: Wheel / tyres: Alloy rim - front right side - Scratch(es) - Loss in value



Damage 7: Wheel / tyres: Alloy rim - front right side - Scratch(es) - Loss in value



Damage 8: Wheel / tyres: Alloy rim - rear right side - Scratch(es) - Loss in value



Damage 8: Wheel / tyres: Alloy rim - rear right side - Scratch(es) - Loss in value



Damage 8: Wheel / tyres: Alloy rim - rear right side - Scratch(es) - Loss in value



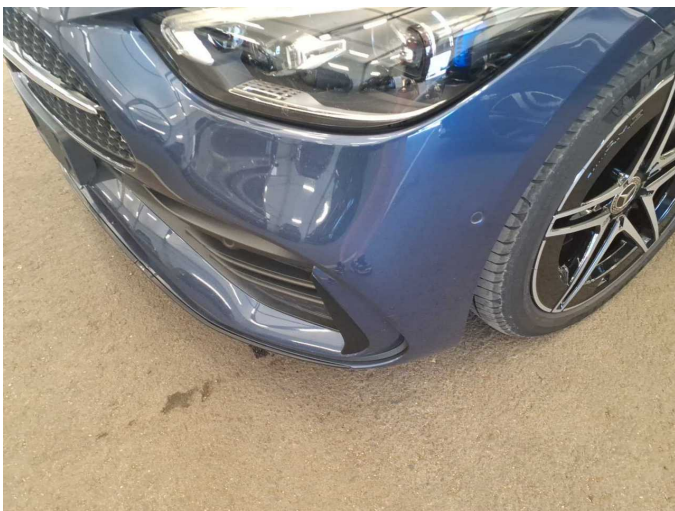
Wear and tear 1: Bonnet: Bonnet - Stone chips - No deduction



Wear and tear 1: Bonnet: Bonnet - Stone chips - No deduction



Wear and tear 2: Front bumper: Front bumper - Stone chips - No deduction



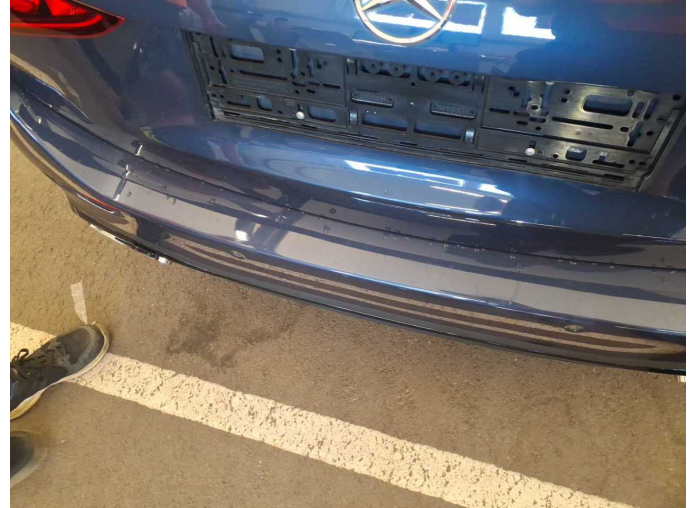
Wear and tear 2: Front bumper: Front bumper - Stone chips - No deduction



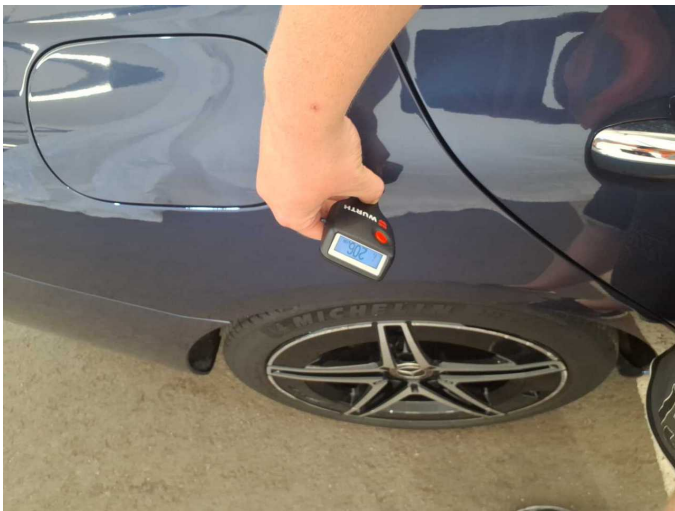
Wear and tear 2: Front bumper: Front bumper - Stone chips - No deduction



Wear and tear 3: Vehicle glazing: Windscreen - Stone chips - No deduction



Wear and tear 4: Rear bumper: Rear bumper - Scratch(es) - No deduction



Repainting 1: Side panel - rear right side



Repainting 1: Side panel - rear right side



Wartungshistorie

(gemäß Auftraggeber Informationen)

Fahrgestellnummer: W1KAH0DB6PF113411

Hersteller / Modell: MERCEDES-BENZ MB C 200 d T 9G-TRONIC AMG Line

Datum	KM-Stand	Beschreibung
27.03.2026	60.683	Batterie ern; Reparatur Sonstiges; Systemtest/Eigendiagnose
02.09.2025	46.637	Reparatur Sonstiges; Systemtest/Eigendiagnose
11.08.2025	46.637	Bremsscheiben vorne; Regelwartungsdienst
24.05.2024	25.809	Regelwartungsdienst