

Expertise

Protocol number: 46296112
Order No. / Reference: 26121199
Inspection date: 2 Jul 2026

Manufacturer: Mercedes-Benz

Model: C 200 d T 9G-TRONIC Avantgarde

VIN: W1KAH0DB3PF111096



Vehicle details

Manufacturer / Type / Model / Equipment

Mercedes-Benz C 200 d T 9G-TRONIC Avantgarde

Vehicle Identification number W1KAH0DB3PF111096

Mileage (Read) 184,918 km

First registration 9 May 2023

Number of holders 1

Power / Engine displacement 120 kw / 1,993 ccm

Fuel type / Cylinder Hybrid Diesel / E / 4

Gearbox / Number of gears Automatic / 9

Type of drive Rear drive

Type of vehicle Station wagon

Colour / colour code SPEKTRALLBLAU
METALLIC

Doors / Seats 5 / 5

Upholstery type Artificial leather

Colour of upholstery Black

Vehicle with smoke odor no

readiness to drive Not roadworthy /
moveable



Vehicle details

Maintenance booklet / proof	Non-existent	Next maintenance in	314 Tag(e)
Key is / should be	2 / 2	FZG documents	ZB#2 (B) was available (copy), ZB#1 (S) was not available.
		Letter No.	GS717964
Previous damage / Accident	None detectable	Repainting	Detectable
Inspection conditions	sufficient	Lifting equipment / pit	yes
Test drive	Not performed	Engine function test	With complaint
readiness to drive	Not roadworthy / moveable		
Manufacturer key number/ type code number	2222 / BDF 00241		
Emission standard	EURO6;WLTP;AP;PI/CI; M, N1 I	fine dust sticker	
Permitted total weight	2,400 kg	Empty weight	

Tyres

Mounted tyres

#	Tyre size	Type of tyre	Manufacturer	Tread depth
1)	225/50 R17 98H	Winter tyres on Light alloy	Fulda	8mm / 8mm
2)	225/50 R17 98H	Winter tyres on Light alloy	Fulda	8mm / 8mm

Additional tyres

#	Tyre size	Type of tyre	Manufacturer	Tread depth
1)	225/50 R17 94W	Summer tyres (Without wheel rim)	Continental	4mm / 4mm
2)	225/50 R17 94W	Summer tyres (Without wheel rim)	Continental	4mm / 4mm

Legend: Tread depth information for the left tire is listed first, for the right tire it is listed second on the axle in the direction of travel.

TÜV SÜD Auto Partner GmbH
Wiesenring 2
04159 Leipzig

Inspection location
Mosolf SE & Co.KG
Faberweg 25
73230 Kirchheim unter Teck



Equipment



Standard equipment

- Airbag for driver and front passenger
- Airbag: Center airbag (Additional airbag for increased front occupant protection in the event of a side impact)
- Airbag: Sidebag for driver and front passenger (combined thorax/pelvisbag)
- Airbag: Windowbag for driver and front passenger
- Ambient lighting with 64 light colors
- Left and right exterior mirrors are heated and electrically adjustable
- Brake assist, active
- Roof rails in polished aluminum
- Double cup holder at the front
- EASY-PACK tailgate (with electric operation for opening and closing)
- Electronic Stability Program (ESP) (including Anti-lock Braking System (ABS) and Traction Control System (ASR))
- Speed Limit Assistant (The Speed Limit Assistant detects and displays speed limits.)
- Rear bumper in body color (rear bumper painted in body color with centrally positioned trim panel (wing) in glossy chrome)
- KEYLESS-GO start function
- THERMATIC automatic climate control with 1 climate zone (controlled via the central display or the climate control unit in the center console) - Sensor system for detecting, for example, interior/ exterior temperature, solar radiation, humidity and dew point - Ventilation system consisting of: 3 center vents in the center area and 2 side vents, 2 ventilation openings each in the footwell for driver and front passenger - Fine dust filter for filtering dust, soot and pollen - Dew point sensor, continuous defroster vent under the windshield and 2 fixed defroster vents)
- Steering wheel: Multifunction sports steering wheel in leather (sporty steering wheel in 3-spoke design - leather finish - black grained shift paddles - control via touch panels: left: driver display, cruise control and limiter or active distance assist DISTRONIC; right: MBUX multimedia system (e.g. audio volume and track selection, telephony and navigation), touch sensitivity adjustable via central display)
- Center console in high-gloss black
- Package: Storage (storage compartment with net on the left in the load compartment - double cup holder in the center console for 2 x 750 ml - elastic tension strap on the right in the load compartment - folding box under the load floor - 1 additional bag hook on the right in the load compartment - recess including storage tray on the right in the load compartment - map pockets on the backs of the front seats - reversible mat in the boot floor)
- Airbag: Automatic passenger airbag deactivation (The system automatically deactivates the passenger airbag as soon as it detects a rear-facing child seat or registers that the passenger seat is unoccupied. A transponder in the child seat is not necessary. If it detects that an adult is taking the seat, the airbag is automatically activated, reducing the risk of incorrect operation.)
- Basic services (breakdown management, maintenance management, accident management, telediagnosis, remote vehicle diagnostics)
- Diesel particulate filter
- DYNAMIC SELECT (consisting of driving programs: Comfort, Sport, Eco mode)
- ECO start/stop function
- Electric windows (4-way)
- Velour floor mats
- Transmission: 9-speed automatic, 9G-TRONIC
- rear window wiper
- Heated rear window
- Interior headliner fabric crystal grey
- ISOFIX child seat attachment with top tether in the rear
- Mechanical child safety lock for the rear doors
- Rear headrests (3)
- Front headrests
- Paint finish: Solid
- Cargo area cover including EASY-PACK safety net
- LED High Performance headlights (The elements of the LED High Performance headlights: - Torch and trifunctional light guide for daytime running lights, position lights and turn signals - Multi-chamber reflector system with 4 individual reflectors each) for low beam and high beam. The elements of the rear lights in LED technology: - All light functions in full LED technology - Tail light - Brake light and parking light - Rear fog light (only on the left side) - Turn signals - Reversing light - 3rd brake light)
- Mercedes-Benz Emergency Call System (can provide a crucial time advantage in an emergency. A communication module with its own SIM card automatically triggers an emergency call upon detection of an accident, which can shorten the time until emergency services arrive. The emergency call can also be triggered manually to organize assistance.)
- Package: AVANTGARDE Exterior (radiator grille with integrated Mercedes star and a chrome-plated louvre, radiator grille frame in chrome - 43.2 cm (17") 5-spoke alloy wheels, high-gloss black paint and gloss coating, 225/50 R 17 on 7 J x 17 ET 44.5 - Dynamic front bumper with centrally positioned trim strip in high-gloss chrome and diamond-pattern air intakes in black. - AGILITY CONTROL suspension with 15 mm lowering and selective damping system. - Strip on the rear side windows in high-gloss black.)
- Upholstery: ARTICO leatherette/fabric



- Package: Interior lighting package (Illuminated glove compartment - Lighting for wireless mobile interface or mobile phone storage - Lighting for the storage compartment in the center console or the double cupholders - Lighting for the storage compartment under the center console armrest - Two vanity lights in front - Two reading lights in the overhead control unit - Two reading lights in the interior mirror in conjunction with mirror parking - Two reading lights and interior light function in the rear grab handles - Lighting for the trunk or cargo area)
 - Radio: MBUX (fully digital instrument display with 26 cm (10.25") color LCD display and a resolution of 1440 x 540 pixels - Bluetooth telephony / audio - WLAN hotspot)
 - Radio accessory: Communication module (LTE) for using Mercedes me connect services (The communication module with a vehicle-integrated, LTE-enabled SIM card offers you added comfort and safety. It continuously connects you to your vehicle – and the vehicle to infrastructure such as the Mercedes-Benz server or the internet. This allows you to use services such as Mercedes me connect Live Traffic Information.)
 - Windscreen wipers with rain sensor
 - Power steering
 - Seats: Rear seat backrests foldable
 - Lane Keeping Assist, active
 - Cruise control
 - High-visibility vest for drivers
 - Electronic immobilizer
 - Decorative elements in diamond pattern, silver-grey
- Radio: Extended MBUX functions (personalization (profiles) and prediction functions - MBUX voice assistant "LINGUATRONIC" with natural language understanding - activation via Hey Mercedes - learning function of the MBUX voice assistant through connection with a cloud-based online dictionary, Mercedes me connect service free of charge for 3 years from activation - Wi-Fi hotspot - internet radio)
 - Radio accessories: Digital radio (DAB)
 - Radio accessories: Central display (High-resolution central display, slightly inclined towards the driver with a 24 cm (9.5") screen diagonal, with MBUX multimedia system - touch display with LCD technology)
 - Tire pressure monitoring system (TPMS)
 - Remote Services Plus (Communication module - Mercedes me services: remote vehicle status query, programming of auxiliary heating/ventilation, remote door locking and unlocking, sunroof/windows with remote locking and opening including ventilation remote control, personalization, vehicle location, vehicle tracking, geographic vehicle monitoring, parking service monitoring, finder function (Remote Vehicle Finder), notification when exceeding the driving speed, Send2Car function)
 - Central locking with remote control



Extra equipment

- Black fabric headliner
- Paint finish: Metallic
- Center console diamond pattern silver grey
- Package: Advanced Comfort Package (Heated seats for driver and front passenger - Seat Comfort Package: - Numerous electric and manual adjustment options for the front seats to adapt to the specific body and comfort requirements of the driver and front passenger - Electro-pneumatic 4-way lumbar support and lateral support adjustment with control element on the seat - Electric seat cushion tilt adjustment - Electric height adjustment - Electric backrest adjustment - Electric seat cushion depth adjustment - Mechanical longitudinal adjustment - Mechanical headrest adjustment)
- Package: Infotainment package (MBUX Navigation Premium (hard drive navigation, pre-installation for Live Traffic Information), traffic sign assistant, smartphone integration (connects the mobile phone wirelessly to the multimedia system via Apple CarPlay and Android Auto))
- Package: Parking (12 ultrasonic sensors - reversing camera - Active Parking Assist with PARKTRONIC: detects free parking spaces, assisted parking, visual and acoustic warning, display of camera and ultrasonic data in the media display - Cross traffic warning: can provide visual and acoustic warnings when reversing out of a parking space and, if necessary, automatically initiate emergency braking - Reverse maneuvering brake: can trigger a braking process - Drive-away assist)
- Heat-insulating dark tinted glass
- THERMATIC automatic climate control with 2 climate zones (control via the central display or the climate control unit in the center console; sensor system for detecting, for example, indoor/outdoor temperature, sunlight, humidity, and dew point; automatic recirculation (only in conjunction with navigation system); ventilation system consisting of: 3 center vents and 2 side vents; fine dust activated carbon filter for filtering dust, soot, and pollen; dew point sensor; residual heat function for efficient use of engine waste heat)
- Package: Business (for Avantgarde Exterior (P15) or AMG Line Exterior (P31)) (Mirror Package: Electrically folding exterior mirrors with automatic dimming function, ambient lighting with Mercedes-Benz logo projection - Advanced Comfort Package: Heated seats for driver and front passenger, 4-way lumbar support, seat comfort package - Parking Package: Parking package with reversing camera - Infotainment Package: MBUX Navigation Premium, traffic sign assist, smartphone integration - Larger fuel tank)
- Upholstery: ARTICO man-made leather
- Radio accessories: Advanced sound system (with 9 speakers and 225 watts system power)
- Wheels: 43.2 cm (17") light alloy wheels with 10-twin-spoke design (vanadium silver painted with 225/50 R 17 on 7 J x 17 ET 44.5)
- Seats: Comfort seats
- Type designation removed from trunk lid
- Heat and noise insulating acoustic glass (for windshield and front doors)

Brief expert findings

Documents submitted	At the time of the inspection, the vehicle registration certificate Part 2 (title) was available, but the vehicle registration certificate Part 1 (document) was not. (Copy)
VIN comparison	The vehicle identification number (VIN) was read from the vehicle and its conformity with the submitted documents was confirmed by the undersigned during the inspection.
Inspection	The inspection conditions were sufficient for the assessment of the vehicle. Lifting equipment and/or a pit were available for examining the vehicle.
Test drive	No test drive/shunting maneuver was carried out during the inspection of the vehicle.
Engine function test	An engine test run was performed, problem has been detected This is due to the following reason.: Motorkontrolleuchte leuchtet.
readiness to drive	The vehicle was not capable of driving under its own power at the time of inspection, but can be moved on its own axle with the aid of assistance.



Value reducing factors

No.	Component group	Description
1	Braking system	Brake fluid - No evidence - No deduction
2	Misc.	Inspection / maintenance - No evidence - No deduction
3	Electrical system	Battery - Empty - Perform
4	Trim / covers	Boot lid - interior trim - Scratch(es) - Loss in value
5	Side panel - rear left side	Sill - Scratch(es) - Smart repair
6	Wheel / tyres	Alloy rim - rear left side - Scratch(es) - Loss in value
7	Wheel / tyres	Alloy rim - front left side - Scratch(es) - Loss in value
8	Instrument panel	Indicator light (Motorkontrolleuchte) - on - Perform
9	Bonnet	Bonnet (Mit Steinschlag) - Scratch(es) - Paint
10	Side panel - rear left side	Side panel (Orangenhaut) - Unprofessionally repaired - Paint

Wear and tear

No.	Component group	Description
1	Misc.	Inspection / maintenance - No evidence - No deduction
2	Vehicle glazing	Windscreen - Stone chips - No deduction
3	Body	Body - Scratch(es) - No deduction
4	Front bumper	Front bumper - Scratch(es) - No deduction
5	Documents	Service book (Digitaler Ausdruck) - Missing - No deduction

The vehicle shows signs of wear and tear commensurate with its age and use.

Repainting

No. Repainting

- 1 Side panel - rear left side, Unprofessionally carried out, Invoice of repair done Non-existent

Paint coat thickness measurement

Side panel - rear left side 284 µm |

Order/Scope of Order

An order was placed to prepare a sales report for the described vehicle. This report includes the following:

- Description of key vehicle information
- Documentation of equipment features
(*Delivery by third-party service providers*)
- Documentation of damage, defects, missing parts
- Documentation of prior damage, unrepaired prior damage, repainting
- A brief visual or functional inspection of the equipment details, if possible.
(*Functional testing of driver assistance systems is not included in the scope of services!*)
- a photographic documentation of the vehicle



Basis for the order

This product is based on the guidelines for vehicle returns and valuations published by Alphabet Fleet GmbH. The expert makes the specific findings in each individual case objectively, within the framework of the prescribed standards, based on their own expertise.

The vehicle inspection takes place in a fully assembled, unassembled state.

Damage or defects that can only be detected during disassembly/diagnostic work or through further investigation remain within the realm of prognostic risk. An increased risk exists due to concealed defects caused by fraudulent misrepresentation and which were not identifiable by the expert.

Damage or defects resulting from normal use or wear and tear of the vehicle will be accepted in accordance with the applicable standard.

There was no explicit identification or monetary consideration of the expected features within the product.

Features which, in their nature and extent, slightly exceed normal use but do not constitute unacceptable damage, will be documented and indicated as signs of wear, if applicable.

Damage or defects that, according to the applicable standard, can no longer be attributed to normal use or wear and tear are listed under "Value Reducing Factors" in the product description.

Depending on the product specification, a monetary ID can be provided. If this takes place, the costs can be 100% d or pro rata depending on the vehicle's age and mileage.

Previous damages

No apparent prior damage that had been repaired could be found on the vehicle.

Comments

-Der montierte Reifensatz ist kein Bestandteil des Auslieferungsumfangs.

-Felgen der Winterräder gehören zu den Sommerreifen



Figure 1: Diagonal front (left)



Figure 2: Diagonal front (right)



Figure 3: Diagonal rear (left)



Figure 4: Diagonal rear (right)



Figure 5: Interior - front



Figure 6: Interior - rear



Figure 7: Instrument cluster



Figure 8: Instrument cluster



Figure 9: Instrument panel



Figure 10: Interior 360° view



Figure 11: Cargo area



Figure 12: VIN



Figure 13: Mounted tyres



Figure 14: Documents

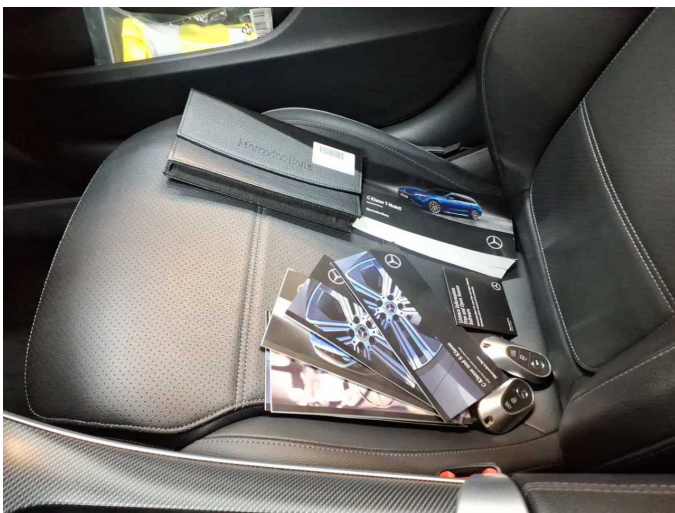


Figure 15: Documents



Figure 16: Additional tyres

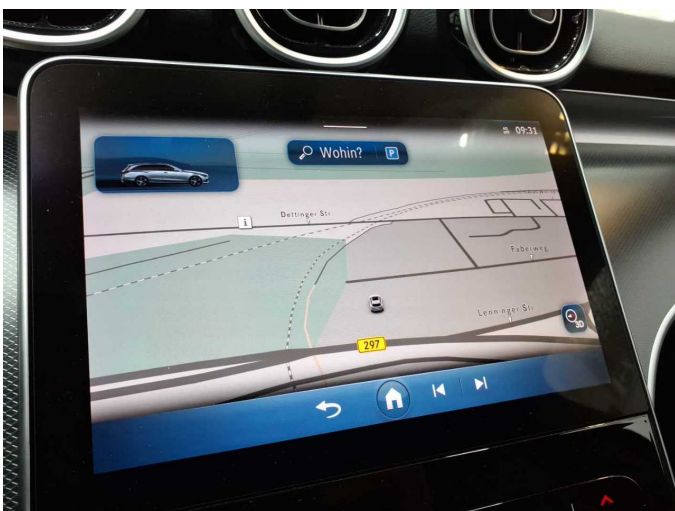


Figure 17: Navigation



Figure 18: Misc.



Figure 19: Misc.



Figure 20: Misc.

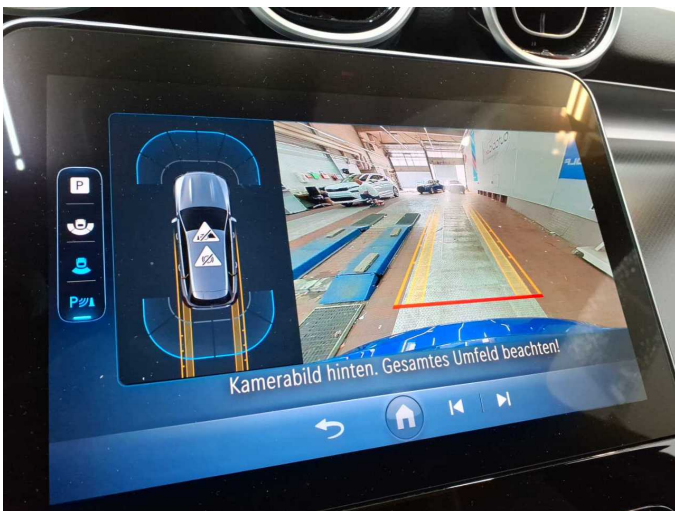


Figure 21: Misc.

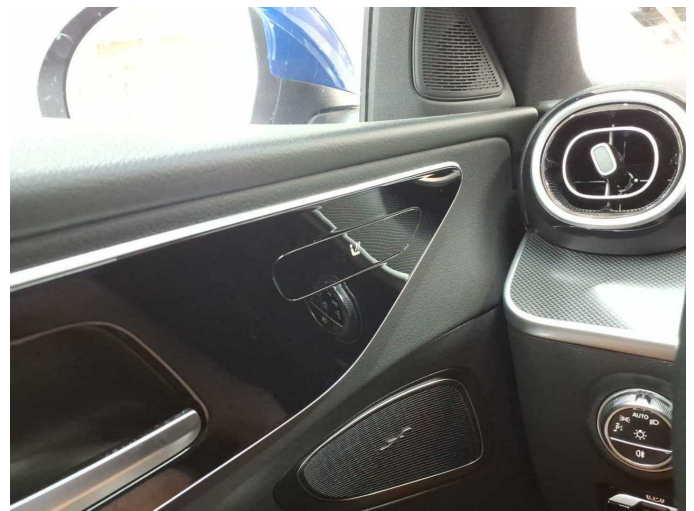


Figure 22: Misc.

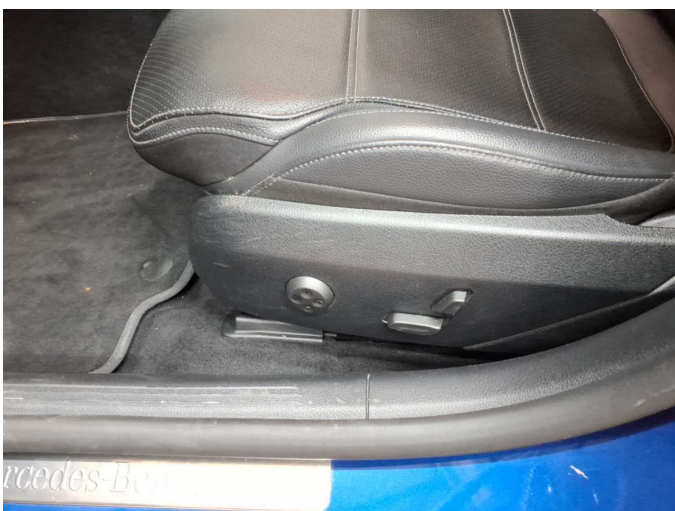


Figure 23: Misc.



Figure 24: Misc.



Figure 25: Misc.



Figure 26: Misc.



Figure 27: Misc.



Figure 28: Misc.

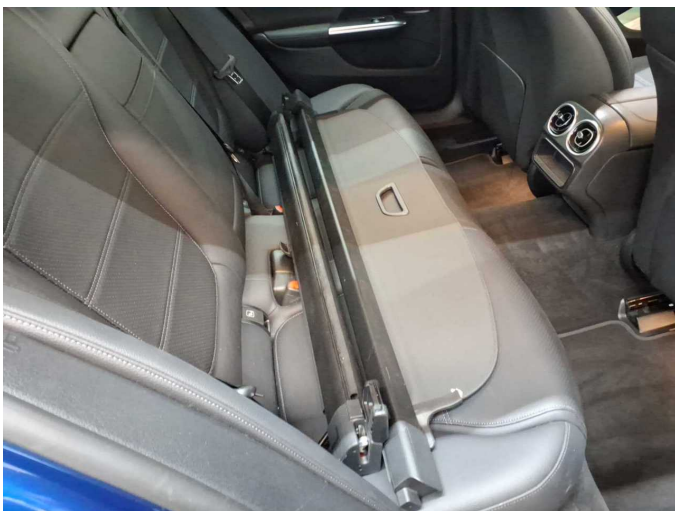


Figure 29: Misc.

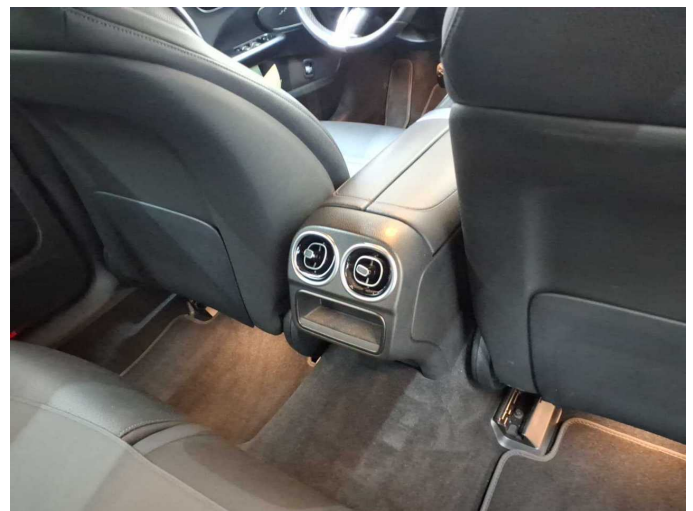


Figure 30: Misc.



Figure 31: Misc.



Figure 32: Misc.

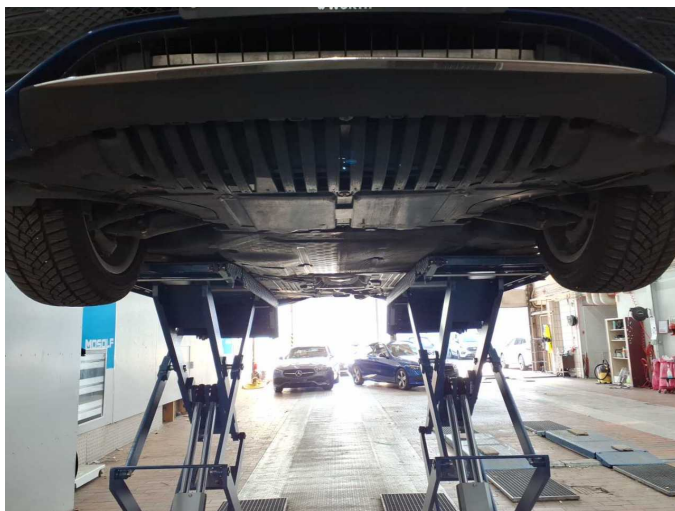
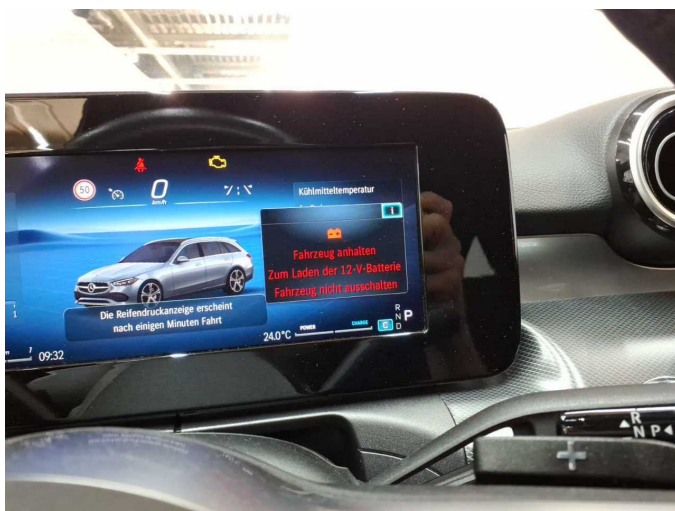


Figure 33: Misc.



Damage 3: Electrical system: Battery - Empty - Perform



Damage 3: Electrical system: Battery - Empty - Perform



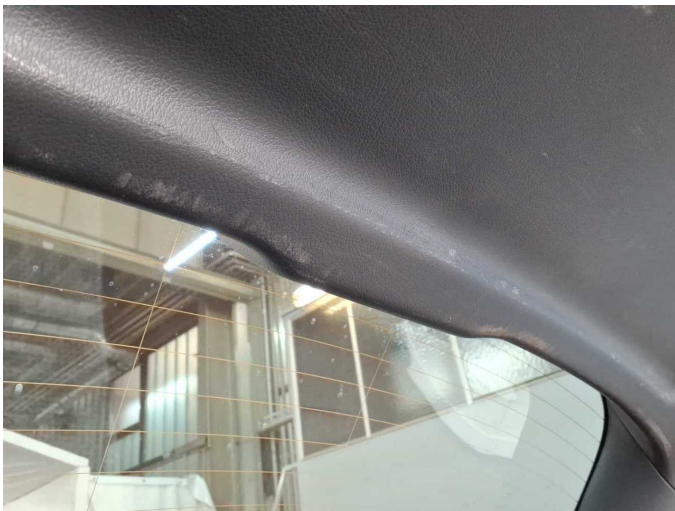
Damage 4: Trim / covers: Boot lid - interior trim - Scratch(es) - Loss in value



Damage 4: Trim / covers: Boot lid - interior trim - Scratch(es) - Loss in value



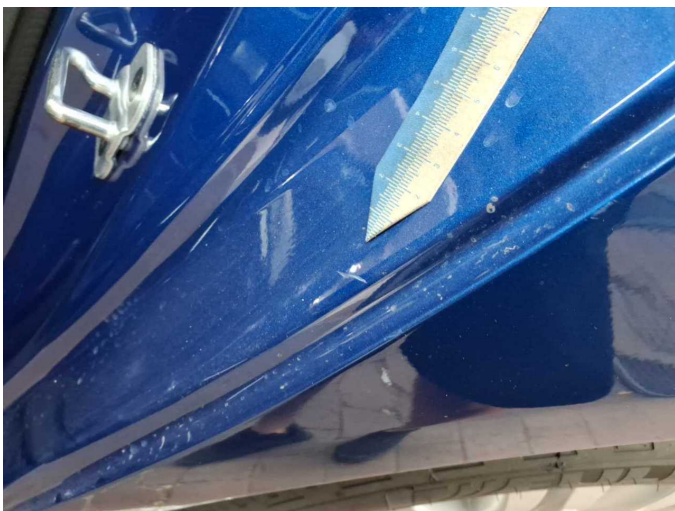
Damage 4: Trim / covers: Boot lid - interior trim - Scratch(es) - Loss in value



Damage 4: Trim / covers: Boot lid - interior trim - Scratch(es) - Loss in value



Damage 5: Side panel - rear left side: Sill - Scratch(es) - Smart repair



Damage 5: Side panel - rear left side: Sill - Scratch(es) - Smart repair



Damage 6: Wheel / tyres: Alloy rim - rear left side - Scratch(es) - Loss in value



Damage 6: Wheel / tyres: Alloy rim - rear left side - Scratch(es) - Loss in value



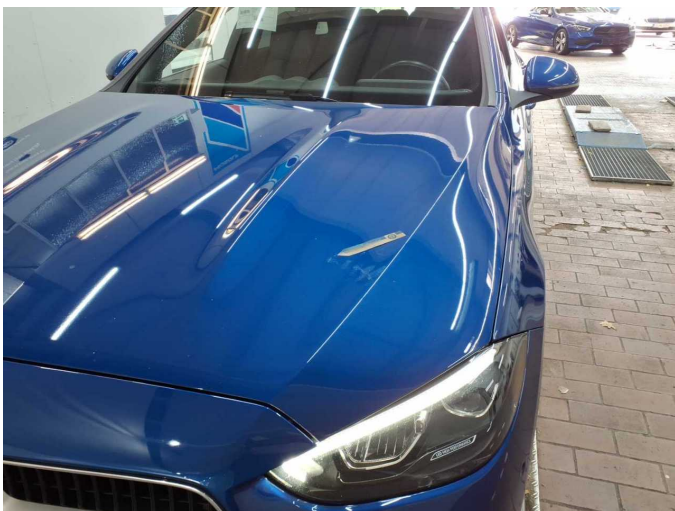
Damage 7: Wheel / tyres: Alloy rim - front left side - Scratch(es) - Loss in value



Damage 7: Wheel / tyres: Alloy rim - front left side - Scratch(es) - Loss in value



Damage 8: Instrument panel: Indicator light (Motorkontrolleuchte) - on - Perform



Damage 9: Bonnet: Bonnet (Mit Steinschlag) - Scratch(es) - Paint



Damage 9: Bonnet: Bonnet (Mit Steinschlag) - Scratch(es) - Paint



Damage 10: Side panel - rear left side: Side panel (Orangenhaut) - Unprofessionally repaired - Paint



Damage 10: Side panel - rear left side: Side panel (Orangenhaut) - Unprofessionally repaired - Paint



Repainting 1: Side panel - rear left side



Repainting 1: Side panel - rear left side