

Expertise

Protocol number: 46167146
Order No. / Reference: 26509866
Inspection date: 25 Jun 2026

Manufacturer: Nissan

Model: Leaf 62 kWh e+ N-Connecta

VIN: SJNFAAZE1U0145272



Vehicle details

Manufacturer / Type / Model / Equipment

Nissan Leaf 62 kWh e+ N-Connecta

Vehicle Identification number SJNFAAZE1U0145272

Mileage (Read) 39,173 km

First registration 22 Dec 2021

Number of holders 1

Power / Engine displacement 90 kw / 0 ccm

Fuel type / Cylinder Electric / 0

Gearbox / Number of gears Direct drive / 1

Type of drive Front drive

Type of vehicle Saloon car

Colour / colour code Blade Silver Metallic

Doors / Seats 5 / 5

Upholstery type Cloth

Colour of upholstery Black-Blue

Re-import no

readiness to drive Roadworthy



Vehicle details

Maintenance booklet / proof	Non-existent	Next maintenance in	
Key is / should be	3 / 3	FZG documents	ZB#2 (B) was available (copy), ZB#1 (S) was not available.
		Letter No.	GC885312
Previous damage / Accident	None detectable	Repainting	None detectable
Inspection conditions	sufficient	Lifting equipment / pit	yes
Test drive	Not performed	Engine function test	Performed
readiness to drive	Roadworthy		
Manufacturer key number/ type code number	2228 / AAJ 00003		
Emission standard	2017/1151;WLTP;reine Elektrofz	fine dust sticker	
Permitted total weight	2,140 kg	Empty weight	

Tyres

Mounted tyres

#	Tyre size	Type of tyre	Manufacturer	Tread depth
1)	215/50 R17 95V	All-season tyres on Light alloy	Goodyear	2mm / 2mm
2)	215/50 R17 95V	All-season tyres on Light alloy	Goodyear	7mm / 7mm

Replacement

Typ	Tyre size	Type of tyre	Manufacturer	Tread depth
Tirefit		Expiration date 05/2025		

Legend: Tread depth information for the left tire is listed first, for the right tire it is listed second on the axle in the direction of travel.



Equipment

Standard equipment

- Airbag: Driver and passenger side
- Airbag: Front side airbags
- Anti-lock braking system (ABS) with electronic brake force distribution (EBD) and NISSAN brake assist
- Outdoor temperature display
- third brake light
- Electric windows front and rear
- Cruise control system and speed limiter
- cup holder
- Heated rear window
- Intelligent Adaptive Speed and Distance Assist
- Intelligent Autonomous Emergency Braking Assistant
- Automatic air conditioning
- Headrests (5) front and rear
- Front charging port Type 2, AC (up to 6.6 kW)
- Charging port: Fast charging port at the front (CHAdeMO), direct current up to 50 kW
- Charging cable: Mode 3 charging cable Type 2/Type 2 (up to 7.4kW)
- Steering wheel: Remote control on the steering wheel
- Headlight range control
- NISSAN Connect EV navigation system
- Electric parking brake
- ProPILOT
- Radio accessories: Apple CarPlay and Android Auto
- Tire pressure monitoring system (TPMS)
- Color reversing camera
- Rear seat backrest foldable asymmetrically (60:40)
- Windscreen wipers with intermittent function front and rear
- Seat belts: Three-point seat belts
- Seats: Driver's seat height adjustable
- 12-volt socket, front
- Chrome-look door handles
- Glazing: UV-absorbing windshield
- Electronic immobilizer

Extra equipment

- 2 additional keys
- All-season tyres
- Paint finish: Metallic

- Airbag: Front and rear head airbags
- Acoustic pedestrian warning system (AVAS)
- Electrically adjustable exterior mirrors in car color
- Exterior mirrors with automatic folding function
- Hill Start Assist
- Electronic Stability Program (ESP)
- High Beam Assist
- Transmission: Automatic, continuously variable
- shark antenna
- Interior mirror, automatically dimming
- Intelligent AROUND VIEW MONITOR
- Intelligent lane keeping assist active
- Removable boot cover
- Paint finish: Solid
- Charging port: Fast charging port at the front (CHAdeMO) compatible with 100kW
- Charging cable: EVSE cable (Mode 2 safety system) with household plug (up to 2.3 kW)
- Leather steering wheel
- Steering column adjustable in height and depth
- Light and rain sensor
- Fog light
- Upholstery: Cloth
- Cross-traffic alert
- Radio accessories: Roof antenna
- Wheels: Light alloy (4) 6.5J x 17"
- LED taillights
- Windows tinted from the B-pillar back
- electric power steering
- Seats: Driver and passenger seats manually adjustable
- Seats: ISOFIX child seat attachment
- Blind spot assist, active
- Glazing: Laminated glass windshield
- Traffic sign recognition
- Central locking including remote control

- Wheel lock for 4 alloy wheels
- Rubber mats
- Registration package including floor mats, first aid kit, W



Brief expert findings

Documents submitted	At the time of the inspection, the vehicle registration certificate Part 2 (title) was available, but the vehicle registration certificate Part 1 (document) was not. (Copy)
VIN comparison	The vehicle identification number (VIN) was read from the vehicle and its conformity with the submitted documents was confirmed by the undersigned during the inspection.
Inspection	The inspection conditions were sufficient for the assessment of the vehicle. Lifting equipment and/or a pit were available for examining the vehicle.
Test drive	No test drive/shunting maneuver was carried out during the inspection of the vehicle.
Engine function test	An engine test run was performed.
readiness to drive	The vehicle was roadworthy at the time of inspection.

Value reducing factors

No.	Component group	Description
1	Equipment	Tirefit filler - Due - Replace
2	Seat - front	Seat cover - right side (Sitze) - Soiled - Clean
3	Boot lid / rear door	Trim standard - upper (Rechts mit Halter) - Broken / torn - Replace
4	Vehicle glazing	Rear window - Scratch(es) - Loss in value
5	Rear bumper	Rear bumper - Scratch(es) - Smart repair
6	Side panel - rear left side	Side panel - Dent / paintcoat damage - Smart repair
7	Bonnet	Insulation lining - Broken / torn - Replace
8	Wheel / tyres	Tyre - front - Does not meet the leasing specifications - Replace
9	Wheel / tyres	Alloy rim - front right side - Scratched - Replace
10	Front bumper	Front bumper - Scratched - Repair and paint
11	Sill - right side	Trim - Broken / torn - Replace
12	Body	Body (Hagelschaden) - dent(s) - Repair

Wear and tear

No.	Component group	Description
1	Wheel / tyres	Alloy rim - front left side - Scratch(es) - No deduction
2	Misc.	Main inspection - No evidence - No deduction
3	Misc.	Inspection / maintenance - No evidence - No deduction

The vehicle shows signs of wear and tear commensurate with its age and use.

Missing parts

Description

Wheel / tyres - Wheel lock

Order/Scope of Order

An order was placed to prepare a sales report for the described vehicle. This report includes the following:

- Description of key vehicle information
- Documentation of equipment features
(*Delivery by third-party service providers*)
- Documentation of damage, defects, missing parts
- Documentation of prior damage, unrepaired prior damage, repainting
- A brief visual or functional inspection of the equipment details, if possible.
(*Functional testing of driver assistance systems is not included in the scope of services!*)
- a photographic documentation of the vehicle



Basis for the order

This product is based on the guidelines for vehicle returns and valuations published by Alphabet Fleet GmbH. The expert makes the specific findings in each individual case objectively, within the framework of the prescribed standards, based on their own expertise.

The vehicle inspection takes place in a fully assembled, unassembled state.

Damage or defects that can only be detected during disassembly/diagnostic work or through further investigation remain within the realm of prognostic risk. An increased risk exists due to concealed defects caused by fraudulent misrepresentation and which were not identifiable by the expert.

Damage or defects resulting from normal use or wear and tear of the vehicle will be accepted in accordance with the applicable standard.

There was no explicit identification or monetary consideration of the expected features within the product.

Features which, in their nature and extent, slightly exceed normal use but do not constitute unacceptable damage, will be documented and indicated as signs of wear, if applicable.

Damage or defects that, according to the applicable standard, can no longer be attributed to normal use or wear and tear are listed under "Value Reducing Factors" in the product description.

Depending on the product specification, a monetary ID can be provided. If this takes place, the costs can be 100% d or pro rata depending on the vehicle's age and mileage.

Previous damages

No apparent prior damage that had been repaired could be found on the vehicle.

Comments

- Es wird kein Service-Restlauf angezeigt.

- Die beigefügte Reparaturkostenkalkulation wurde nach bestem Wissen und Gewissen unter eingeschränkten Besichtigungsbedingung im demontagefreien Zustand erstellt. Es können aufgrund verdeckter Beschädigung erhebliche Mehrkosten und somit Abweichung der für den Unfall ausgewiesenen Reparaturkosten nicht ausgeschlossen werden.



Figure 1: Diagonal front (left)



Figure 2: Diagonal front (right)



Figure 3: Diagonal rear (left)



Figure 4: Diagonal rear (right)



Figure 5: Interior - front



Figure 6: Interior - rear



Figure 7: Instrument cluster



Figure 8: Instrument panel



Figure 9: Interior 360° view



Figure 10: Cargo area



Figure 11: VIN



Figure 12: Mounted tyres



Figure 13: Documents



Figure 14: Documents



Figure 15: Documents



Figure 16: Documents

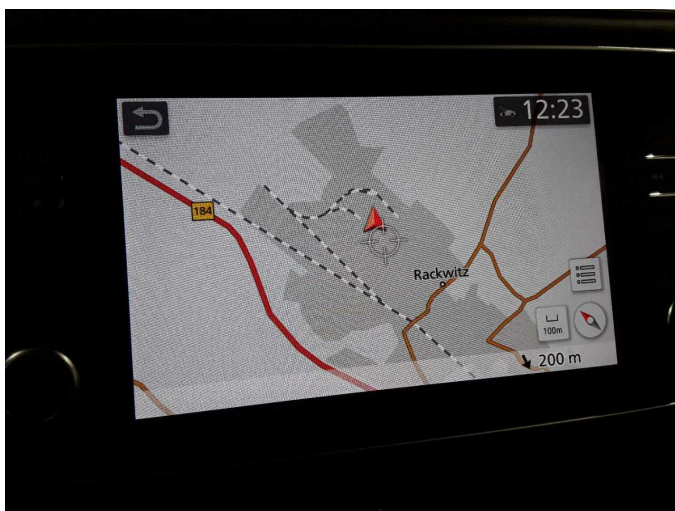


Figure 17: Navigation



Figure 18: Misc.



Figure 19: Misc.



Figure 20: Misc.



Figure 21: Misc.



Figure 22: Misc.



Figure 23: Misc.



Figure 24: Misc.



Figure 25: Misc.



Figure 26: Misc.



Figure 27: Misc.



Figure 28: Misc.



Figure 29: Misc.



Figure 30: Misc.



Figure 31: Misc.



Figure 32: Misc.



Figure 33: Misc.

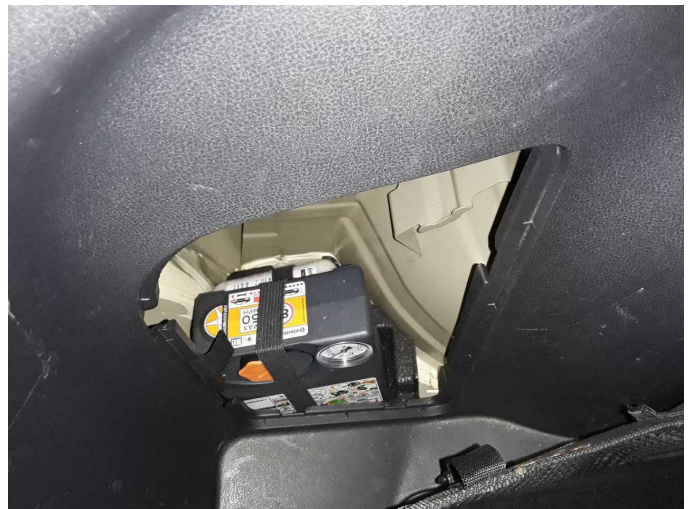
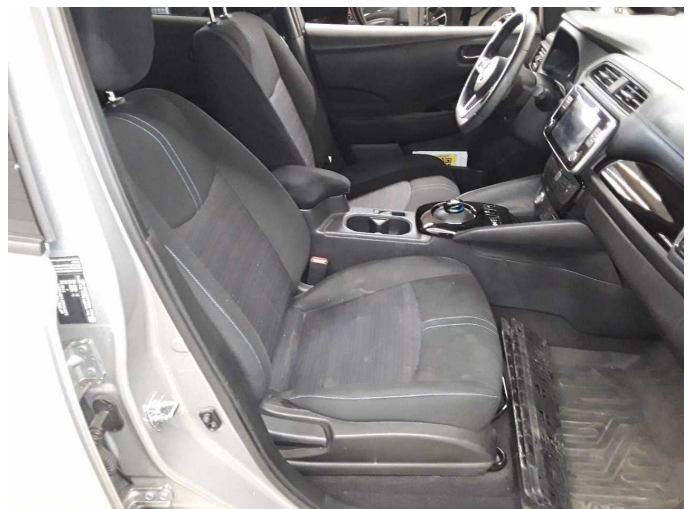


Figure 34: Misc.



Damage 1: Equipment: Tirefit filler - Due - Replace



Damage 2: Seat - front: Seat cover - right side (Sitze) - Soiled - Clean



Damage 2: Seat - front: Seat cover - right side (Sitze) - Soiled - Clean



Damage 2: Seat - front: Seat cover - right side (Sitze) - Soiled - Clean



Damage 2: Seat - front: Seat cover - right side (Sitze) - Soiled - Clean



Damage 2: Seat - front: Seat cover - right side (Sitze) - Soiled - Clean



Damage 3: Boot lid / rear door: Trim standard - upper (Rechts mit Halter) - Broken / torn - Replace



Damage 3: Boot lid / rear door: Trim standard - upper (Rechts mit Halter) - Broken / torn - Replace



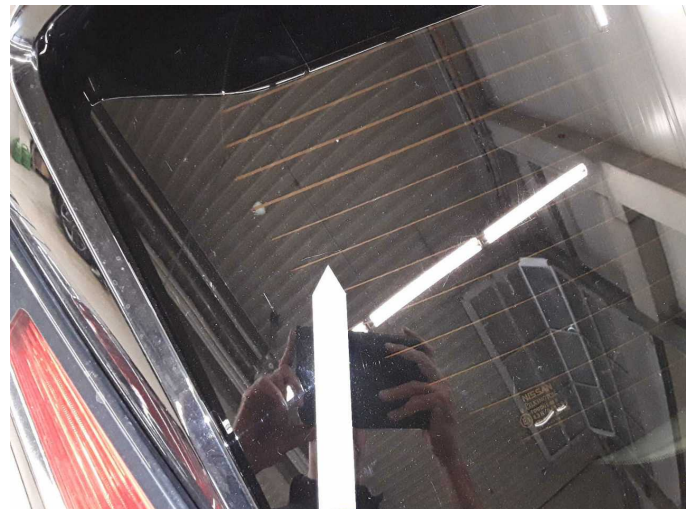
Damage 3: Boot lid / rear door: Trim standard - upper (Rechts mit Halter)
- Broken / torn - Replace



Damage 4: Vehicle glazing: Rear window - Scratch(es) - Loss in value



Damage 4: Vehicle glazing: Rear window - Scratch(es) - Loss in value



Damage 4: Vehicle glazing: Rear window - Scratch(es) - Loss in value



Damage 5: Rear bumper: Rear bumper - Scratch(es) - Smart repair



Damage 5: Rear bumper: Rear bumper - Scratch(es) - Smart repair



Damage 5: Rear bumper: Rear bumper - Scratch(es) - Smart repair



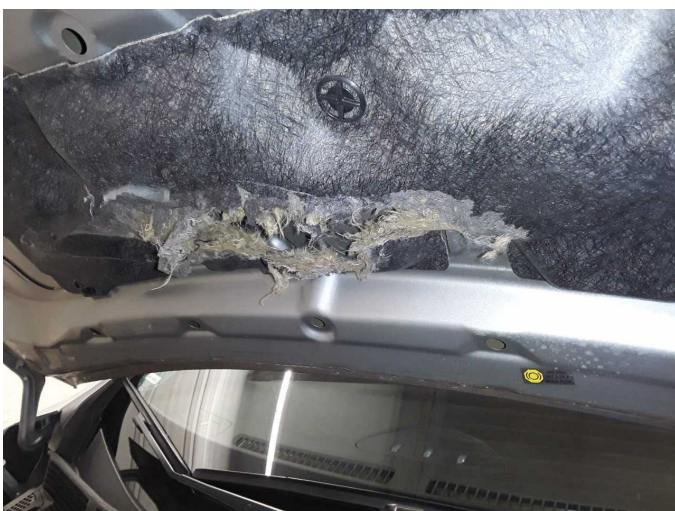
Damage 6: Side panel - rear left side: Side panel - Dent / paintcoat damage - Smart repair



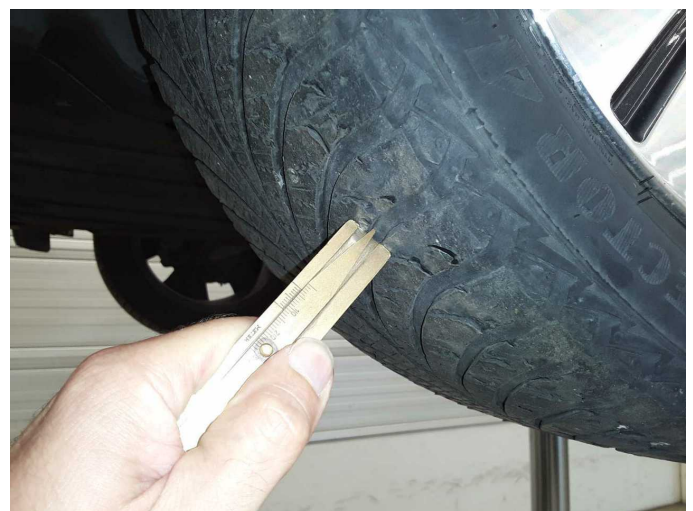
Damage 6: Side panel - rear left side: Side panel - Dent / paintcoat damage - Smart repair



Damage 7: Bonnet: Insulation lining - Broken / torn - Replace



Damage 7: Bonnet: Insulation lining - Broken / torn - Replace



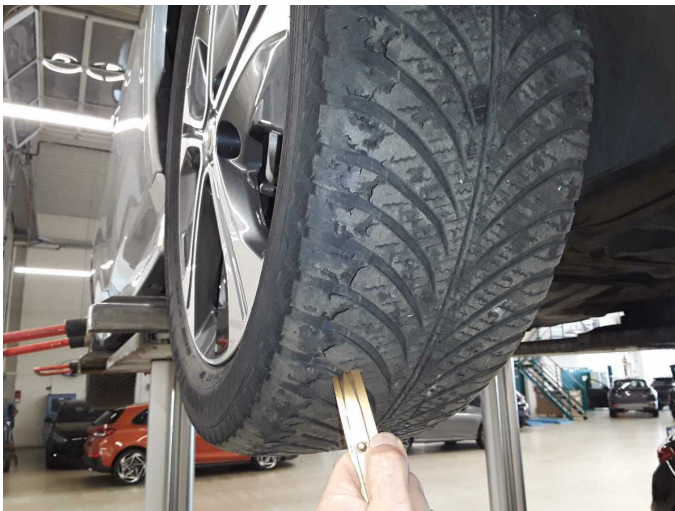
Damage 8: Wheel / tyres: Tyre - front - Does not meet the leasing specifications - Replace



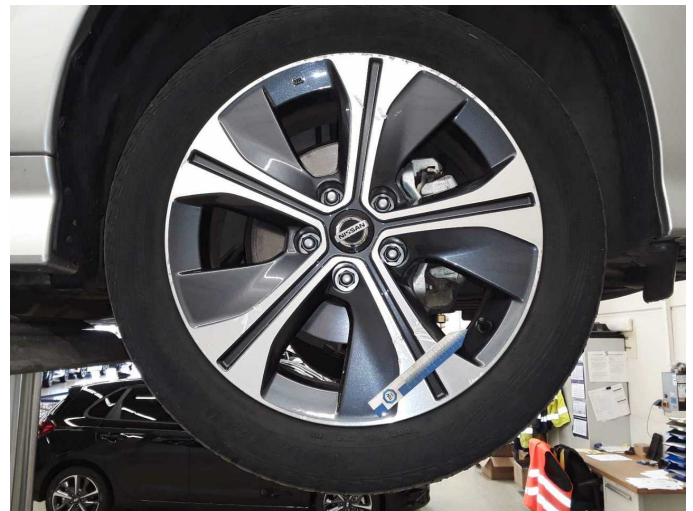
Damage 8: Wheel / tyres: Tyre - front - Does not meet the leasing specifications - Replace



Damage 8: Wheel / tyres: Tyre - front - Does not meet the leasing specifications - Replace



Damage 8: Wheel / tyres: Tyre - front - Does not meet the leasing specifications - Replace



Damage 9: Wheel / tyres: Alloy rim - front right side - Scratched - Replace



Damage 9: Wheel / tyres: Alloy rim - front right side - Scratched - Replace



Damage 9: Wheel / tyres: Alloy rim - front right side - Scratched - Replace



Damage 10: Front bumper: Front bumper - Scratched - Repair and paint



Damage 10: Front bumper: Front bumper - Scratched - Repair and paint



Damage 10: Front bumper: Front bumper - Scratched - Repair and paint



Damage 10: Front bumper: Front bumper - Scratched - Repair and paint



Damage 10: Front bumper: Front bumper - Scratched - Repair and paint



Damage 10: Front bumper: Front bumper - Scratched - Repair and paint



Damage 11: Sill - right side: Trim - Broken / torn - Replace



Damage 11: Sill - right side: Trim - Broken / torn - Replace



Damage 11: Sill - right side: Trim - Broken / torn - Replace



Damage 11: Sill - right side: Trim - Broken / torn - Replace



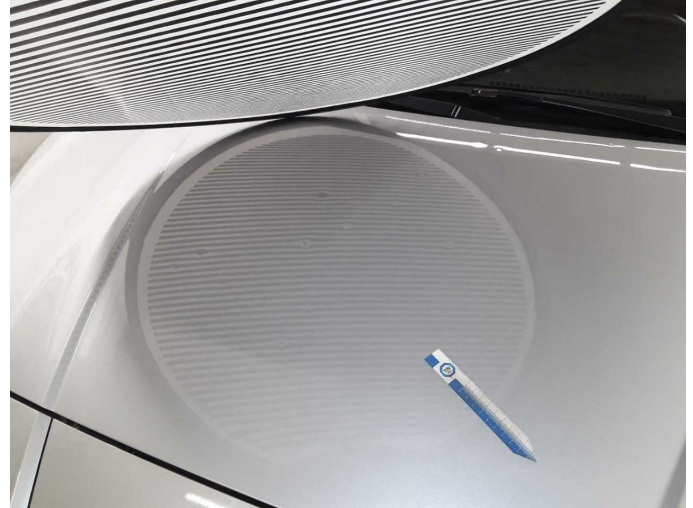
Damage 12: Body: Body (Hagelschaden) - dent(s) - Repair



Damage 12: Body: Body (Hagelschaden) - dent(s) - Repair



Damage 12: Body: Body (Hagelschaden) - dent(s) - Repair



Damage 12: Body: Body (Hagelschaden) - dent(s) - Repair



Damage 12: Body: Body (Hagelschaden) - dent(s) - Repair



Damage 12: Body: Body (Hagelschaden) - dent(s) - Repair



Damage 12: Body: Body (Hagelschaden) - dent(s) - Repair



Damage 12: Body: Body (Hagelschaden) - dent(s) - Repair



Damage 12: Body: Body (Hagelschaden) - dent(s) - Repair



Damage 12: Body: Body (Hagelschaden) - dent(s) - Repair



Damage 12: Body: Body (Hagelschaden) - dent(s) - Repair



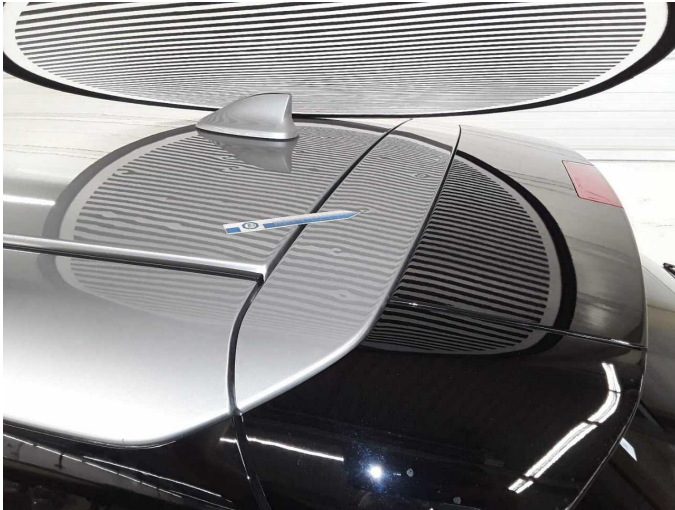
Damage 12: Body: Body (Hagelschaden) - dent(s) - Repair



Damage 12: Body: Body (Hagelschaden) - dent(s) - Repair



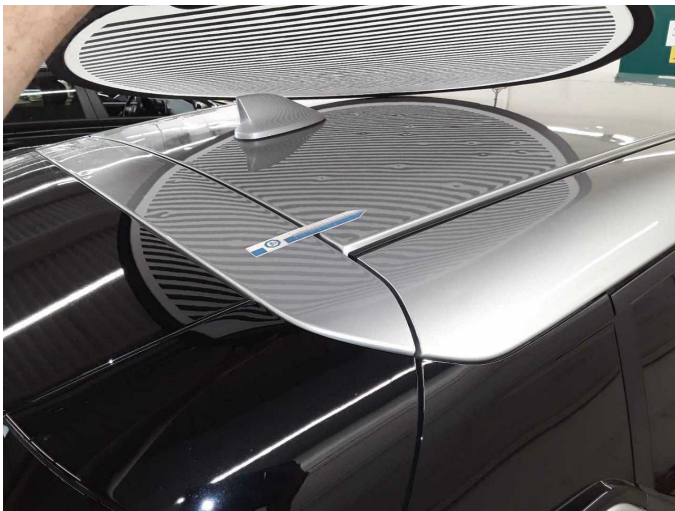
Damage 12: Body: Body (Hagelschaden) - dent(s) - Repair



Damage 12: Body: Body (Hagelschaden) - dent(s) - Repair



Damage 12: Body: Body (Hagelschaden) - dent(s) - Repair



Damage 12: Body: Body (Hagelschaden) - dent(s) - Repair



Damage 12: Body: Body (Hagelschaden) - dent(s) - Repair



Damage 12: Body: Body (Hagelschaden) - dent(s) - Repair



Damage 12: Body: Body (Hagelschaden) - dent(s) - Repair



Damage 12: Body: Body (Hagelschaden) - dent(s) - Repair



Wear and tear 1: Wheel / tyres: Alloy rim - front left side - Scratch(es) - No deduction