

Expertise

Protocol number: 46363508
Order No. / Reference: 26505209
Inspection date: 6 Jul 2026

Manufacturer: Volkswagen

Model: Multivan 2,0 TDI SCR KÜ Life

VIN: WV2ZZZST6RH017250



Vehicle details

Manufacturer / Type / Model / Equipment

Volkswagen Multivan 2,0 TDI SCR KÜ Life

Vehicle Identification number WV2ZZZST6RH017250

Mileage (Read) 101,353 km

First registration 23 Apr 2024

Number of holders 1

Power / Engine displacement 110 kw / 1,968 ccm

Fuel type / Cylinder Diesel / 4

Gearbox / Number of gears Automatic / 7

Type of drive Front drive

Type of vehicle Van

Colour / colour code Pure Grey

Doors / Seats 5 / 7

Upholstery type Cloth

Colour of upholstery Anthracite-Grey

readiness to drive Not roadworthy /
moveable



Vehicle details

Maintenance booklet / proof	digital proof / complete	Next maintenance in	21,200 km
Last service on / at	03/2026 at 92,427 km		
Key is / should be	2 / 2	FZG documents	ZB#2 (B) was available (copy), ZB#1 (S) was not available.
		Letter No.	HB014810
Previous damage / Accident	Detectable	Repainting	None detectable
Inspection conditions	sufficient	Lifting equipment / pit	yes
Test drive	Not performed	Engine function test	Performed
readiness to drive	Not roadworthy / moveable		
Manufacturer key number/ type code number	0603 / CQJ 00444		
Emission standard	EURO6;WLTP;AP;PI/CI; M, N1 I	fine dust sticker	
Permitted total weight	2,850 kg	Empty weight	

Tyres

Mounted tyres

#	Tyre size	Type of tyre	Manufacturer	Tread depth
1)	215/65 R16 102H	Summer tyres on Light alloy	Michelin	6mm / 6mm
2)	215/65 R16 102H	Summer tyres on Light alloy	Continental	6mm / 6mm

Additional tyres

#	Tyre size	Type of tyre	Manufacturer	Tread depth
1)	215/65 R16 102H	Winter tyres on Light alloy	Continental	3mm / 3mm
2)	215/65 R16 102H	Winter tyres on Light alloy	Continental	3mm / 3mm

Legend: Tread depth information for the left tire is listed first, for the right tire it is listed second on the axle in the direction of travel.



Equipment

Standard equipment

- Airbag for driver and front passenger
- Evasive steering assist and turn assist
- Exterior mirror housings in high-gloss black
- Floor coverings: Reinforced velour carpet in the passenger compartment
- Decorative inlays: Decorative inlays "Dark Silver Brushed"
- Parking assistance in the front and rear areas
- Chassis: 16" chassis with 16" disc brakes at the front and 16" disc brakes at the rear
- Window in the sliding door, left
- Windows: Front pane made of laminated safety glass, heat and sound insulating
- Cruise control system with speed limiter
- Glove compartment with light
- Tailgate: Power closing tailgate
- Instrument usage (km/h)
- Cargo space divider (load capacity 20 kg) with bag hooks and luggage net
- Strip between the headlights painted in glossy black
- Headlight range control
- Multifunction display: Digital Cockpit
- Non-smoking version
- eCall emergency call system
- Particulate filter: Soot particle filter for diesel engines
- Radio: App-Connect incl. App-Connect Wireless
- Radio: Digital radio reception (DAB+)
- Radio accessories: Voice control
- Wheels, tires: Covers for alloy wheels
- Wheels/Tires: "Syrakus" alloy wheels 6.5 J x 16, in silver
- Wheels/Tires: Tire pressure monitoring system
- Windscreen wiper intermittent control with rain sensor for the front windscreen wipers
- Drawers under the outer seats in the passenger compartment and 2 waste bins
- Automatically dimming interior safety mirror
- Seats in the passenger compartment: 3 individual seats in the 3rd row.
- Seats: Armrests for driver and front passenger seats, on both sides
- Sun visors with mirrors, illuminated, ticket holder on the driver's side
- Telephone: Mobile phone interface
- Traffic sign recognition
- Green thermal insulation glazing
- Airbag: Side and head airbags for driver and front passenger
- Reinforced battery (68 Ah/ 380 A)
- On-board tools and tire mobility set
- third brake light
- Three-phase generator 180 A
- Electronic Stability Program, ABS, ASR (with deactivation button), EDS
- Chassis: Suspension and damping, standard
- Window in the sliding door, right
- Electric windows, front
- Floor mats: Textile floor mats in the driver's cab
- Transmission: DSG (dual-clutch transmission), 7-speed automatic
- Rear window with wiper/washer system, heated
- Fuel-powered auxiliary heater
- LED headlights with LED daytime running lights
- LED taillights
- Steering wheel: Multifunction leather steering wheel with paddle shifters
- Fatigue detection
- Emergency braking assistant "Front Assist"
- Without Mode 3 charging cable
- Radio: "Ready 2 Discover" with 25.4 cm (10 inch) color touchscreen including "Streaming & Internet"
- Radio accessories: 8 speakers (passive)
- Radio accessories: USB interface
- Wheels/Tires: 215/65 R 16 102 H XL, optimized for low rolling resistance
- Wheels/Tire Accessories: Lockable wheel bolts
- Sliding door: Closing aid on both sides for sliding doors
- Keys for locking system: 2 vehicle keys
- Speed-sensitive power steering (Servotronic)
- Seatbelt check
- Seats in the passenger compartment: 2 individual seats facing forward in the 2nd row.
- Seats: Armrest(s) inside the seats (removable and repositionable)
- Seats: Seat left and right, in the 1st row
- Lane keeping assistant "Lane Assist"
- Daytime running light activation with cornering lights
- First aid kit, warning triangle and high-visibility vest
- Electronic immobilizer
- Central locking with keyless start system "Keyless Start" without safe locking



Extra equipment

- Towbar, foldable (with electric release (including trailer stabilization))
- Windows (glass type in the cargo/passenger compartment) - rear windows heavily tinted
- Navigation system "Discover Media" (25.4 cm (10 inch) color touchscreen - streaming & internet)
- Heated seats for the driver's cab, left and right, separately adjustable
- Seating configuration - 1. Seat packages: 7-seater package with Vis-a-Vis = 2-2-3 (Approval for a maximum of 7 seats - 3 individual seats in the 3rd row - 2 individual seats facing the rear (Vis-a-Vis view) in the 2nd row - Without armrests in the 2nd row - Without armrests in the 3rd row)
- Central locking with keyless locking and starting system "Keyless Access/Advanced" (without safe locking)
- Adaptive Cruise Control (ACC) stop&go
- Anti-theft alarm system with interior monitoring, backup horn and tow-away protection
- Air conditioning: 3-zone "Air Care Climatronic" with additional control unit in the passenger compartment
- Radio: "Harman Kardon" sound system (13 speakers - 840 watts total power - digital 16-channel amplifier - subwoofer)
- Table: Multifunctional table/center console with 3 cup holders (movable throughout the vehicle)
- Partitions: Mesh partition
- Ambient lighting on the tailgate and 30-color ambient lighting (including footwell lighting for the 2nd row of seats)
- Ambient lighting in the door area with logo projection of the Multivan silhouette

Brief expert findings

Documents submitted	At the time of the inspection, the vehicle registration certificate Part 2 (title) was available, but the vehicle registration certificate Part 1 (document) was not. (Copy)
VIN comparison	The vehicle identification number (VIN) was read from the vehicle and its conformity with the submitted documents was confirmed by the undersigned during the inspection.
Inspection	The inspection conditions were sufficient for the assessment of the vehicle. Lifting equipment and/or a pit were available for examining the vehicle.
Test drive	No test drive/shunting maneuver was carried out during the inspection of the vehicle.
Engine function test	An engine test run was performed.
readiness to drive	The vehicle was not capable of driving under its own power at the time of inspection, but can be moved on its own axle with the aid of assistance.



Value reducing factors

No.	Component group	Description
1	Wing mirror - left side	Cap - Scratch(es) - Smart repair
2	Boot lid / rear door	Boot lid - Scratch(es) - Smart repair
3	Door - front right side	Door - dent(s) - Smooth repair work
4	Indicator - front	Mirror - right side - Scratch(es) - Replace
5	Side panel - rear right side	Interior trim (Stoff) - Broken / torn - Smart repair
6	Trim / covers	Boot sill cover (Materialabtrag) - Scratched - Replace
7	Wheel / tyres	Tyre - rear right side (nicht fahrbereit) - Deformed - Replace
8	Wheel / tyres	Tyre - front right side (Flanke, nicht fahrbereit) - Damaged - Replace
9	Sill - left side	Sill - Scratch(es) - Smart repair
10	Interior	Interior (Flecken) - Soiled - Clean
11	Door - rear left side	Speaker cover - Deformed - Loss in value
12	Door - rear right side	Speaker cover - Deformed - Loss in value
13	Trim / covers	Entrance sliding door - left side (Trittbrett links Materialabtrag) - Scratched - Replace
14	Trim / covers	Entrance sliding door - right side (Trittbrett rechts Materialabtrag) - Scratched - Replace
15	Seat - front	Seat cover - left side (+ Polster) - Broken / torn - Replace
16	Sliding door - left side	Sliding door with glass panel - Scratch(es) - Paint
17	Rear bumper	Rear bumper - Scratched - Paint
18	Door - front left side	Door - Dent / paintcoat damage - Repair and paint
19	Bonnet	Bonnet - Dent / paintcoat damage - Repair and paint

Wear and tear

No.	Component group	Description
1	Misc.	Main inspection - No evidence - No deduction

The vehicle shows signs of wear and tear commensurate with its age and use.

Missing parts

Description

Interior - Separation net

Accident damages

No. Accident

1 Side right

Order/Scope of Order

An order was placed to prepare a sales report for the described vehicle. This report includes the following:

- Description of key vehicle information
- Documentation of equipment features
(*Delivery by third-party service providers*)
- Documentation of damage, defects, missing parts
- Documentation of prior damage, unrepaired prior damage, repainting
- A brief visual or functional inspection of the equipment details, if possible.
(*Functional testing of driver assistance systems is not included in the scope of services!*)
- a photographic documentation of the vehicle



Basis for the order

This product is based on the guidelines for vehicle returns and valuations of light commercial vehicles published by Alphabet Fleet Management GmbH. The expert makes the specific findings in each individual case objectively, within the framework of the prescribed standards, based on their own expertise.

The vehicle inspection takes place in a fully assembled, unassembled state.

Damage or defects that can only be detected during disassembly/diagnostic work or through further investigation remain within the realm of prognostic risk. An increased risk exists due to concealed defects caused by fraudulent misrepresentation and which were not identifiable by the expert.

Damage or defects resulting from normal use or wear and tear of the vehicle will be accepted in accordance with the applicable standard.

There was no explicit identification or monetary consideration of the expected features within the product.

Features which, in their nature and extent, slightly exceed normal use but do not constitute unacceptable damage, will be documented and indicated as signs of wear, if applicable.

Damage or defects that, according to the applicable standard, can no longer be attributed to normal use or wear and tear are listed under "Value Reducing Factors" in the product description.

Depending on the product specification, a monetary ID can be provided. If this takes place, the costs can be 100% d or pro rata depending on the vehicle's age and mileage.

Previous damages

Non-repaired previous damages were found at the vehicle. The necessary repair costs are listed in the expert report or if necessary, are listed in detail in a separately enclosed repair cost calculation.

Comments

Der beiliegende Winterradsatz ist kein Bestandteil der Ausstattung.



Figure 1: Diagonal front (left)



Figure 2: Diagonal front (right)



Figure 3: Diagonal rear (left)



Figure 4: Diagonal rear (right)

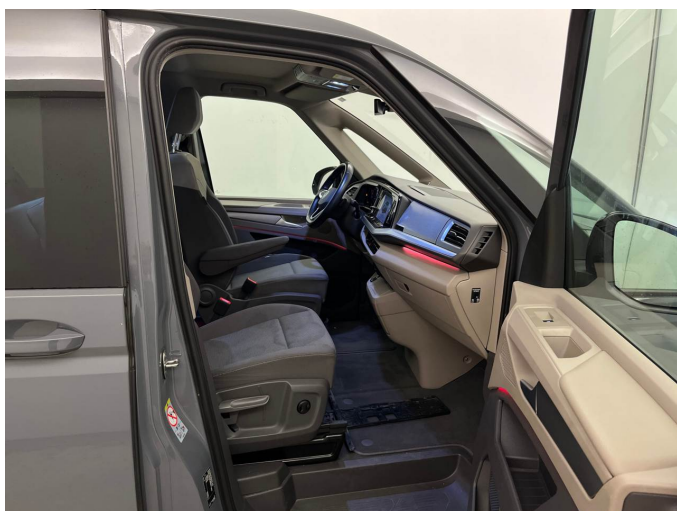


Figure 5: Interior - front



Figure 6: Interior - rear



Figure 7: Instrument cluster



Figure 8: Instrument panel



Figure 9: Interior 360° view



Figure 10: Cargo area



Figure 11: VIN



Figure 12: Mounted tyres



Figure 13: Documents



Figure 14: Additional tyres



Figure 15: Navigation



Figure 16: Misc.



Figure 17: Misc.



Figure 18: Misc.



Figure 19: Misc.



Figure 20: Misc.



Figure 21: Misc.

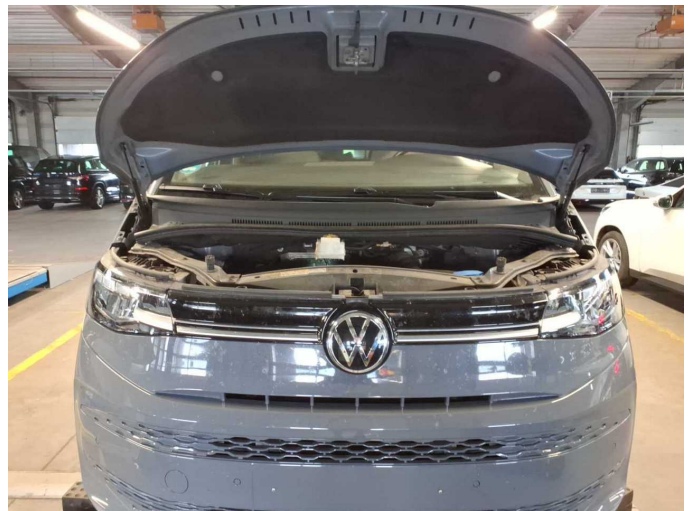


Figure 22: Misc.

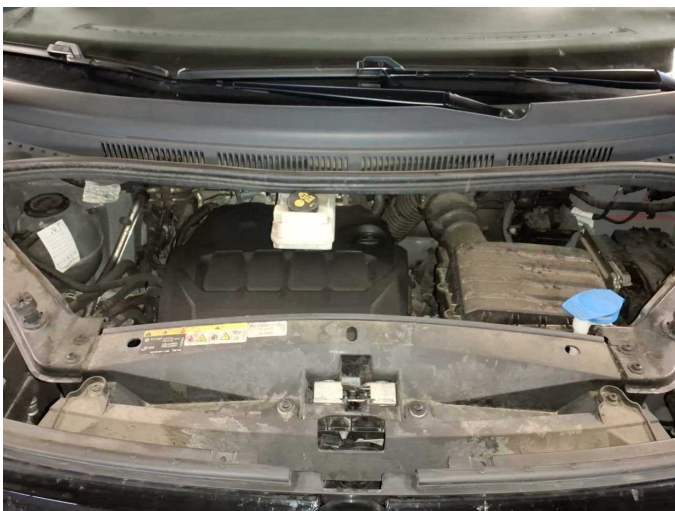


Figure 23: Misc.



Figure 24: Misc.



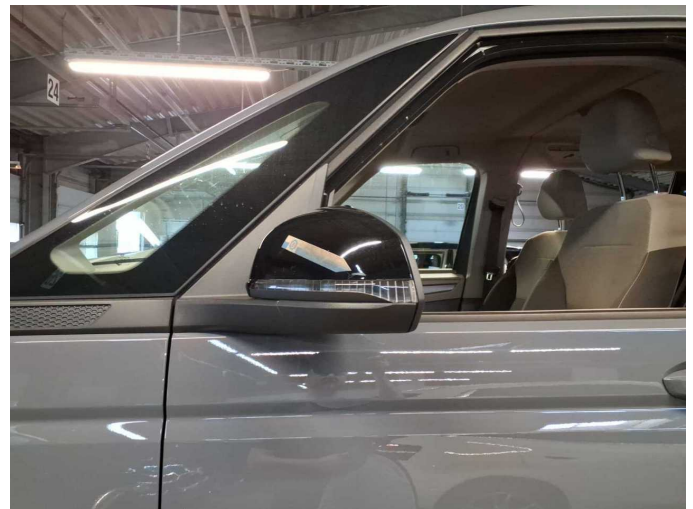
Figure 25: Misc.



Figure 26: Misc.



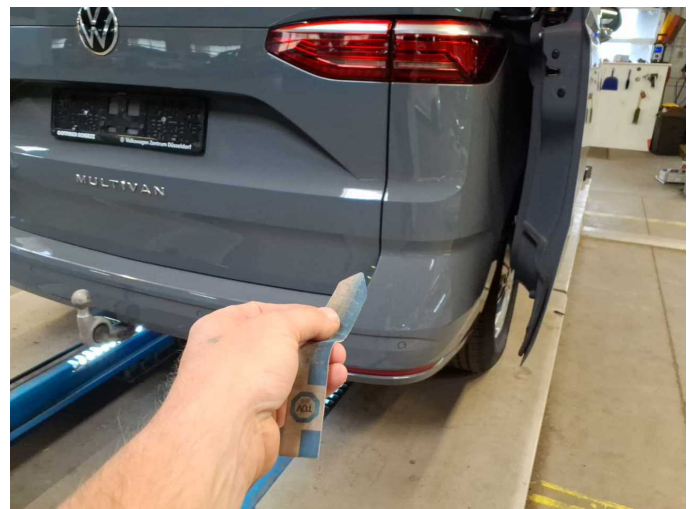
Figure 27: Misc.



Damage 1: Wing mirror - left side: Cap - Scratch(es) - Smart repair



Damage 1: Wing mirror - left side: Cap - Scratch(es) - Smart repair



Damage 2: Boot lid / rear door: Boot lid - Scratch(es) - Smart repair



Damage 2: Boot lid / rear door: Boot lid - Scratch(es) - Smart repair



Damage 3: Door - front right side: Door - dent(s) - Smooth repair work



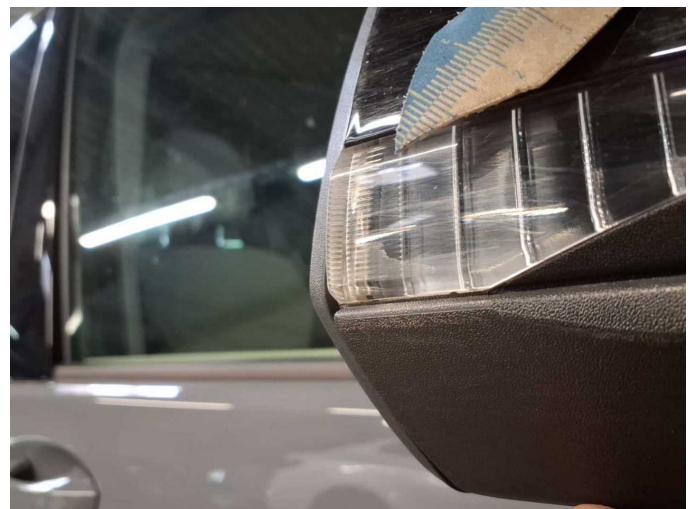
Damage 3: Door - front right side: Door - dent(s) - Smooth repair work



Damage 4: Indicator - front: Mirror - right side - Scratch(es) - Replace



Damage 4: Indicator - front: Mirror - right side - Scratch(es) - Replace



Damage 4: Indicator - front: Mirror - right side - Scratch(es) - Replace



Damage 5: Side panel - rear right side: Interior trim (Stoff) - Broken / torn - Smart repair



Damage 5: Side panel - rear right side: Interior trim (Stoff) - Broken / torn - Smart repair



Damage 6: Trim / covers: Boot sill cover (Materialabtrag) - Scratched - Replace



Damage 6: Trim / covers: Boot sill cover (Materialabtrag) - Scratched - Replace



Damage 6: Trim / covers: Boot sill cover (Materialabtrag) - Scratched - Replace



Damage 6: Trim / covers: Boot sill cover (Materialabtrag) - Scratched - Replace



Damage 6: Trim / covers: Boot sill cover (Materialabtrag) - Scratched - Replace



Damage 7: Wheel / tyres: Tyre - rear right side (nicht fahrbereit) - Deformed - Replace



Damage 7: Wheel / tyres: Tyre - rear right side (nicht fahrbereit) - Deformed - Replace



Damage 7: Wheel / tyres: Tyre - rear right side (nicht fahrbereit) - Deformed - Replace



Damage 7: Wheel / tyres: Tyre - rear right side (nicht fahrbereit) - Deformed - Replace



Damage 7: Wheel / tyres: Tyre - rear right side (nicht fahrbereit) - Deformed - Replace



Damage 7: Wheel / tyres: Tyre - rear right side (nicht fahrbereit) - Deformed - Replace



Damage 8: Wheel / tyres: Tyre - front right side (Flanke, nicht fahrbereit) - Damaged - Replace



Damage 8: Wheel / tyres: Tyre - front right side (Flanke, nicht fahrbereit) - Damaged - Replace



Damage 9: Sill - left side: Sill - Scratch(es) - Smart repair



Damage 9: Sill - left side: Sill - Scratch(es) - Smart repair



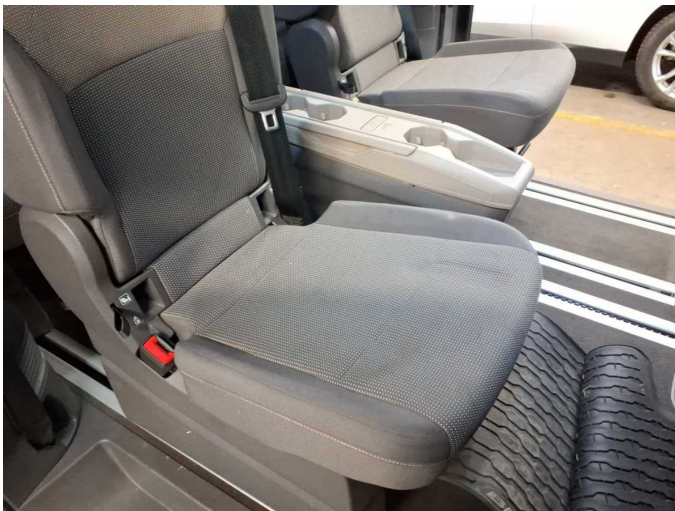
Damage 9: Sill - left side: Sill - Scratch(es) - Smart repair



Damage 10: Interior: Interior (Flecken) - Soiled - Clean



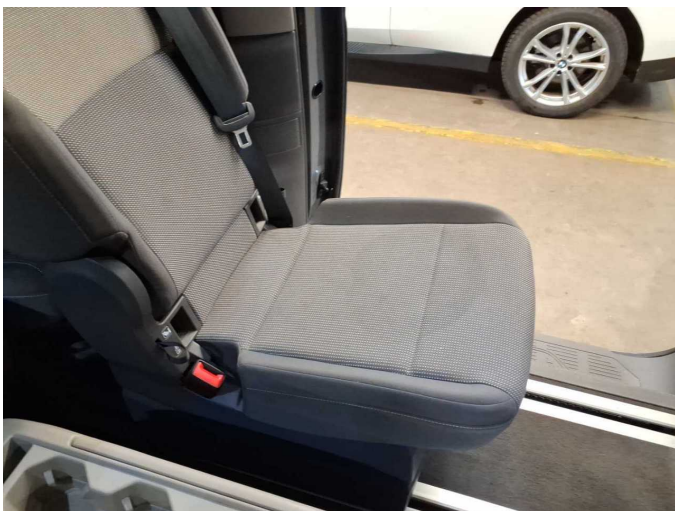
Damage 10: Interior: Interior (Flecken) - Soiled - Clean



Damage 10: Interior: Interior (Flecken) - Soiled - Clean



Damage 10: Interior: Interior (Flecken) - Soiled - Clean



Damage 10: Interior: Interior (Flecken) - Soiled - Clean



Damage 11: Door - rear left side: Speaker cover - Deformed - Loss in value



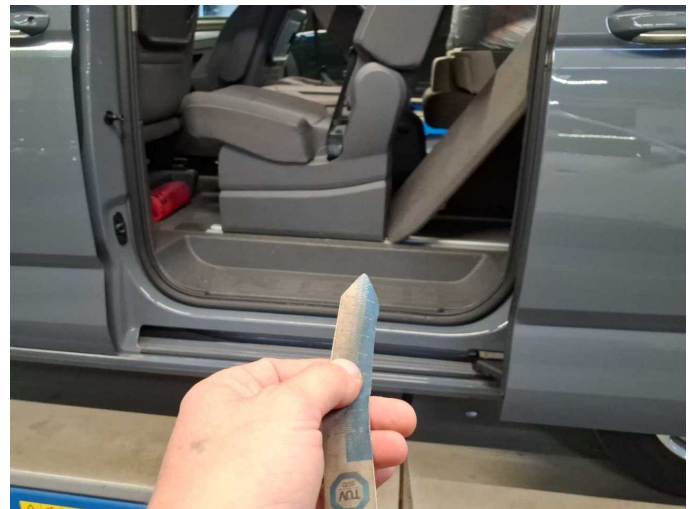
Damage 11: Door - rear left side: Speaker cover - Deformed - Loss in value



Damage 12: Door - rear right side: Speaker cover - Deformed - Loss in value



Damage 12: Door - rear right side: Speaker cover - Deformed - Loss in value



Damage 13: Trim / covers: Entrance sliding door - left side (Trittbrett links Materialabtrag) - Scratched - Replace



Damage 13: Trim / covers: Entrance sliding door - left side (Trittbrett links Materialabtrag) - Scratched - Replace



Damage 13: Trim / covers: Entrance sliding door - left side (Trittbrett links Materialabtrag) - Scratched - Replace



Damage 13: Trim / covers: Entrance sliding door - left side (Trittbrett links Materialabtrag) - Scratched - Replace



Damage 14: Trim / covers: Entrance sliding door - right side (Trittbrett rechts Materialabtrag) - Scratched - Replace



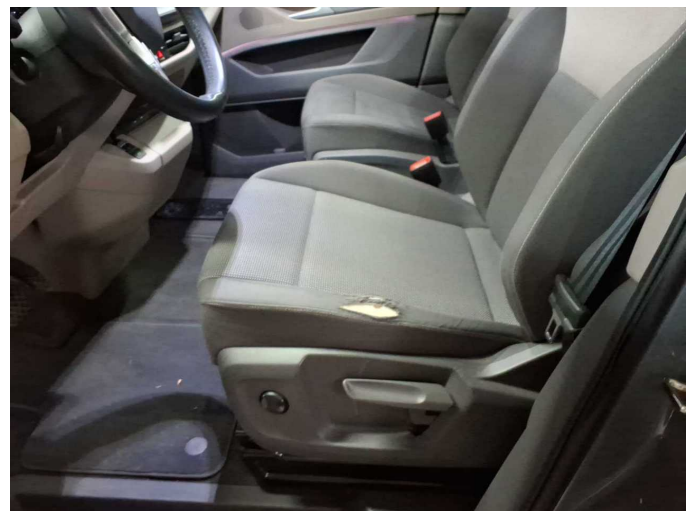
Damage 14: Trim / covers: Entrance sliding door - right side (Trittbrett rechts Materialabtrag) - Scratched - Replace



Damage 14: Trim / covers: Entrance sliding door - right side (Trittbrett rechts Materialabtrag) - Scratched - Replace



Damage 14: Trim / covers: Entrance sliding door - right side (Trittbrett rechts Materialabtrag) - Scratched - Replace



Damage 15: Seat - front: Seat cover - left side (+ Polster) - Broken / torn - Replace



Damage 15: Seat - front: Seat cover - left side (+ Polster) - Broken / torn - Replace



Damage 15: Seat - front: Seat cover - left side (+ Polster) - Broken / torn - Replace



Damage 16: Sliding door - left side: Sliding door with glass panel - Scratch(es) - Paint



Damage 16: Sliding door - left side: Sliding door with glass panel - Scratch(es) - Paint



Damage 17: Rear bumper: Rear bumper - Scratched - Paint



Damage 17: Rear bumper: Rear bumper - Scratched - Paint



Damage 17: Rear bumper: Rear bumper - Scratched - Paint



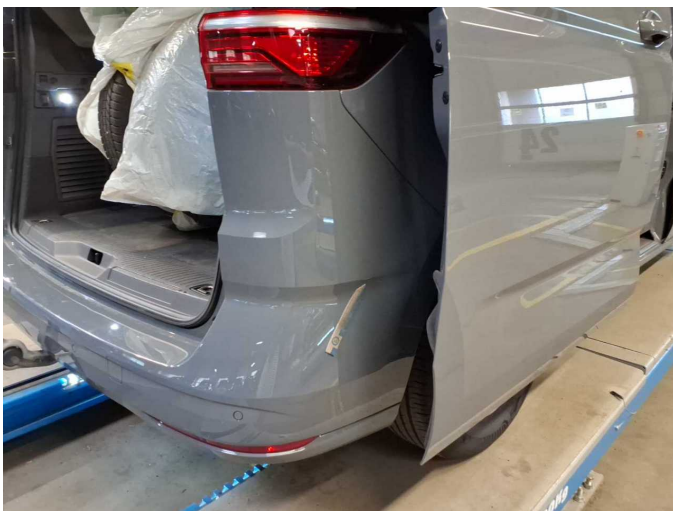
Damage 17: Rear bumper: Rear bumper - Scratched - Paint



Damage 17: Rear bumper: Rear bumper - Scratched - Paint



Damage 17: Rear bumper: Rear bumper - Scratched - Paint



Damage 17: Rear bumper: Rear bumper - Scratched - Paint



Damage 17: Rear bumper: Rear bumper - Scratched - Paint



Damage 18: Door - front left side: Door - Dent / paintcoat damage - Repair and paint



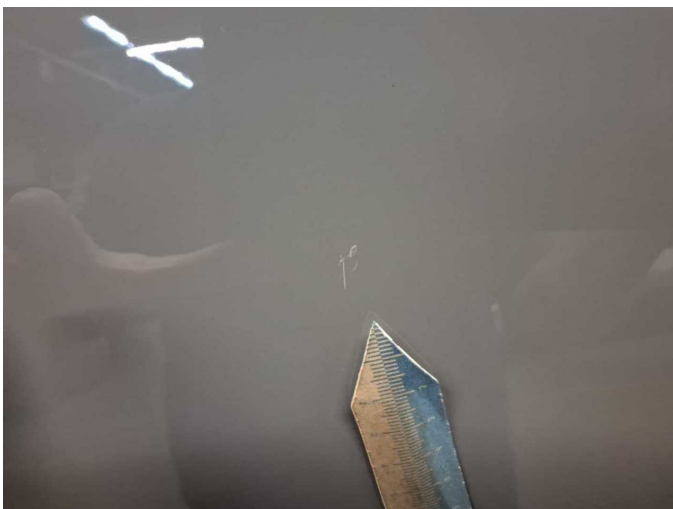
Damage 18: Door - front left side: Door - Dent / paintcoat damage - Repair and paint



Damage 18: Door - front left side: Door - Dent / paintcoat damage - Repair and paint



Damage 18: Door - front left side: Door - Dent / paintcoat damage - Repair and paint



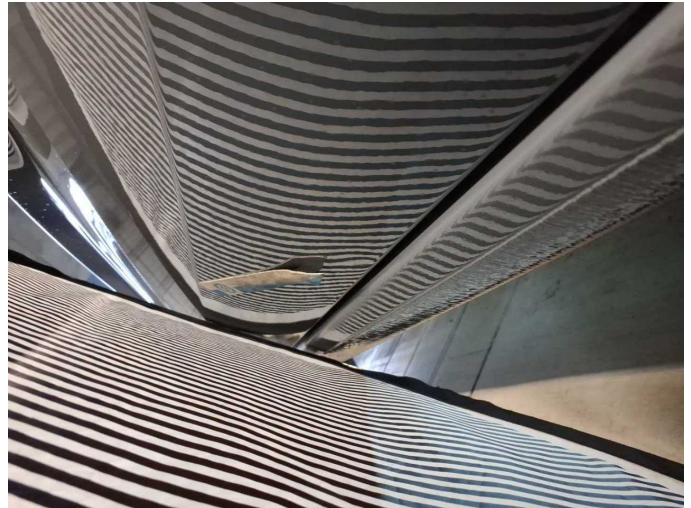
Damage 18: Door - front left side: Door - Dent / paintcoat damage - Repair and paint



Damage 18: Door - front left side: Door - Dent / paintcoat damage - Repair and paint



Damage 18: Door - front left side: Door - Dent / paintcoat damage - Repair and paint



Damage 18: Door - front left side: Door - Dent / paintcoat damage - Repair and paint



Damage 19: Bonnet: Bonnet - Dent / paintcoat damage - Repair and paint



Damage 19: Bonnet: Bonnet - Dent / paintcoat damage - Repair and paint



Damage 19: Bonnet: Bonnet - Dent / paintcoat damage - Repair and paint



Damage 19: Bonnet: Bonnet - Dent / paintcoat damage - Repair and paint



Damage 19: Bonnet: Bonnet - Dent / paintcoat damage - Repair and paint



Damage 19: Bonnet: Bonnet - Dent / paintcoat damage - Repair and paint



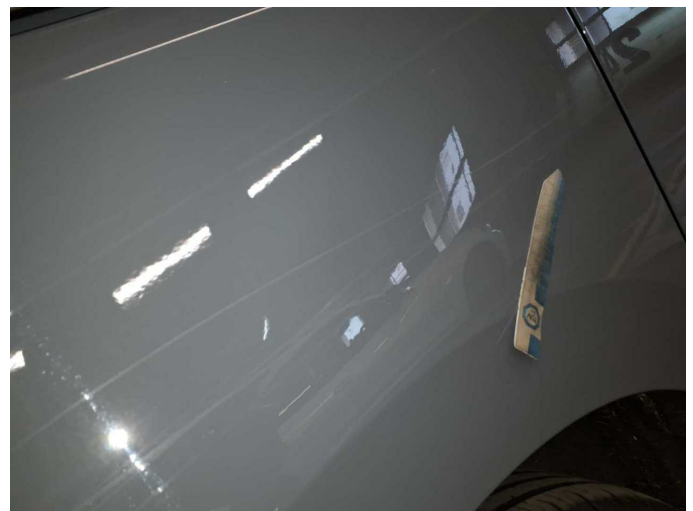
Missing part 1: Interior: Separation net - Missing - Replace



Accident 1: Side right



Accident 1: Side right



Accident 1: Side right



Accident 1: Side right



Accident 1: Side right



Accident 1: Side right



Accident 1: Side right



Accident 1: Side right



Wartungshistorie

(gemäß Auftraggeber Informationen)

Fahrgestellnummer: WV2ZZZST6RH017250

Hersteller / Modell: VOLKSWAGEN VOLKSWAGEN Multivan T7 Kurz Life

Datum	KM-Stand	Beschreibung
31.03.2026	92.427	Motoröl b. Wartung; Motoröl b. Wartung; Ölfilter ern; Ölfilter ern; Regelwartungsdienst; Regelwartungsdienst; Wartung Sonstiges; Wartung Sonstiges
22.07.2025	60.971	Motoröl b. Wartung; Ölfilter ern; Regelwartungsdienst; Wartung Sonstiges
12.06.2025	55.811	Bremse Sonstiges; Bremsklötze hinten; Bremsklötze vorne; Bremscheiben hinten; Bremscheiben vorne
28.11.2024	32.022	Motoröl b. Wartung; Ölfilter ern; Regelwartungsdienst; Wartung Sonstiges