

Expertise

Protocol number: 44498411
Order number / reference: 26093325
Inspection date: 16 Mar 2026

Manufacturer: Opel

Model: Movano 2.3 D L2H2 2WD VA S&S

VIN: W0VMR4600MB266169



Vehicle details

Manufacturer / Type / Model / Equipment

Opel Movano 2.3 D L2H2 2WD VA S&S

Vehicle Identification number W0VMR4600MB266169

Mileage (Read) 115,098 km

First registration 6 Dec 2021

Number of holders 1

Power / Engine displacement 132 kw / 2,299 ccm

Fuel type / Cylinder Diesel / 4

Gearbox / Number of gears Manual / 6

Type of drive Front drive

Type of vehicle Van

Colour / colour code Polarweiß

Doors / Seats 4 / 3

Upholstery type Cloth

Colour of upholstery Anthracite



Vehicle details

Maintenance booklet / proof	digital proof / complete	Next maintenance in	
Last maintenance on / at	02/2025 at 85,462 km		
Key is / should be	2 / 2	FZG documents	ZB#2 (B) was available (copy), ZB#1 (S) was not available
		Letter No.	GC775373
Previous damage / Accident	None detectable	Repainting	None detectable
Inspection conditions	sufficient	Lifting equipment / pit	yes
Test drive	Not performed	Engine function test	Performed
Manufacturer key number/ type code number	1844 / AKL 00941		
Emission standard	EURO6;WLTP;CI;PI/CI;N1 III, N2	Fine dust sticker	
Permitted total weight	3,300 kg	Empty weight	

Tyres

Mounted tyres

#	Tyre size	Type of tyre	Manufacturer	Tread depth
1)	225/65 R16 112T	All-season tyres on Steel rim with wheel cover	Continental	4mm / 4mm
2)	225/65 R16 112T	All-season tyres on Steel rim with wheel cover	Continental	5mm / 5mm

Legend: Tread depth for tires on the left is in the first place, for tires on the right is in the second place on the axle in the direction of travel



Equipment

Standard equipment

- Storage compartment above the windshield
- Driver's side airbag
- On-board computer
- ESP, Electronic Stability Program
- Rear gullwing doors, 180° opening angle, sheet metal cladding
- Heating and ventilation system with particle and odor filter, front
- Paint finish: Solid paint
- Steering column, height adjustable
- Upholstery - Fabric
- Quickheat rapid heating system
- Wheels: Steel wheels 6.5 J x 16 (tires 225/65 R16 C)
- Crosswind Assist
- Visual equipment
- Seat: Driver's seat, 6-way adjustable
- 12-volt socket at the front
- Blind spot mirror in passenger-side sun visor
- Doors: Sheet metal insert without window, driver's side
- Anchoring points in the cargo area
- Immobiliser
- Central locking with radio remote control
- ABS electronic
- Exterior mirrors electrically adjustable and heated
- tachometer
- Electric front windows
- Transmission: 6-speed transmission
- Seat belts: 3-point safety belts in the front
- Headrests (3) height adjustable
- Fuel tank 80 l
- Cargo area lighting
- Particulate filter: Soot particle filter for diesel engines with SCR
- Radio: Radio preparation including speaker, wiring and antenna
- Power steering
- Seat: Double passenger seat
- Start/Stop system
- LED daytime running lights
- Partition wall, closed
- Doors: Sliding door, passenger side, without window
- Lashing eyes on the loading platform
- Thermally insulated glazing, green tinted

Extra equipment

- Passenger side airbag
- Smart tachograph (CAN bus interface, for additional consumers on superstructures)
- Electric front windows with hold function on the driver's side
- Cruise control
- Retrofitting a 3.5t towbar
- Package: Cool & Sound Package 2 XZ48
- Parkpilot, front and rear parking aid (warning signal when reversing)
- Tires: All-weather tires
- Reversing camera with front and rear parking aid
- Seat: Suspension seat, driver's side
- Partition wall: Cladding of the partition wall for noise reduction
- Battery, additional ((70 Ah) with isolating relay, to support the factory-installed auxiliary heater for additional electrical consumers up to 50A)
- FlexTray glove compartment, extendable glove compartment
- Automatic climate control with pollen filter
- Fog light
- Package: Driver Assistance Package 2 (High Beam Assist - Light and Rain Sensor - Lane Assist - Blind Spot Warning)
- Tires: Tire repair kit
- Interface for modifications
- Seat heating on driver's side
- Rear step, integrated into the bumper
- Underbody protection (metal) for engine compartment

Brief expert findings

Documents submitted	At the time of the inspection, the vehicle registration certificate Part 2 (title) was available, but the vehicle registration certificate Part 1 (document) was not. (Copy)
VIN comparison	The vehicle identification number (VIN) was read from the vehicle and its conformity with the submitted documents was confirmed by the undersigned during the inspection.
Inspection	The inspection conditions were sufficient for the assessment of the vehicle. Lifting equipment and a pit were available for examining the vehicle.
Test drive	No test drive/shunting maneuver was carried out during the inspection of the vehicle.
Engine function test	An engine test run was performed.

Value reducing factors



No.	Component group	Description
1	Sill - left side	Sill - Scratch(es) - Smart repair
2	Wheel / tyres	Tyre - front - Does not meet the leasing specifications - Replace
3	Braking system	Brake discs and pads - rear - Corrosion - Replace
4	Braking system	Brake discs and brake pads - front - Corrosion - Replace

Wear and tear

No.	Component group	Description
1	Misc.	Main inspection (kein Nachweis) - Due - Replace

The vehicle shows signs of wear commensurate with its age and use.

Missing parts

Description

Equipment - Tirefit complete

Order/Scope of order

The order was placed to prepare a sales report for the vehicle described. This includes the following:

- Description of core relevant information about the vehicle
- Documentation of equipment features
(Delivery by third-party service providers)
- Documentation of damage, defects, missing parts
- Documentation of previous damage, unrepaired previous damage, repainting
- a brief visual or functional inspection of the equipment details if possible.
(Functional tests of driver assistance systems are not included in the scope of services!)
- a photo documentation of the vehicle

Basis for the order

This product is based on the guidelines for vehicle returns and valuations of light commercial vehicles from Alphabet Fuhrparkmanagement GmbH. The expert makes the explicit findings in each individual case objectively within the framework of the specified standards based on his or her own expertise.

The vehicle inspection takes place in a disassembled state.

Damage or defects that can only be detected during disassembly/diagnosis work or through advanced knowledge remain within the scope of the prognosis risk. An extended risk exists for concealed defects caused by fraudulent deception and not identifiable by the expert.

Damage or defects resulting from normal use or wear and tear of the vehicle will be accepted according to the applicable standard.

There was no explicit identification or monetary consideration of the expected features within the product.

Features which in their nature and severity slightly exceed normal use but do not constitute unacceptable damage will be documented and identified under signs of use if necessary.

Damage or defects that can no longer be attributed to normal use or wear and tear according to the underlying standard are listed in the product under value-reducing factors.

Depending on the product specification, a monetary ID can be provided. If this takes place, the costs can be 100% d or pro rata depending on the vehicle's age and mileage.

Previous damages

No apparent prior damage that had been repaired could be found on the vehicle.



Figure 1: Diagonal front (left)



Figure 2: Diagonal front (right)



Figure 3: Diagonal rear (left)



Figure 4: Diagonal rear (right)



Figure 5: Interior - front



Figure 6: Interior - rear



Figure 7: Instrument cluster



Figure 8: Instrument panel



Figure 9: Interior 360° view



Figure 10: Cargo area



Figure 11: VIN



Figure 12: Mounted tyres



Figure 13: Documents



Figure 14: Documents

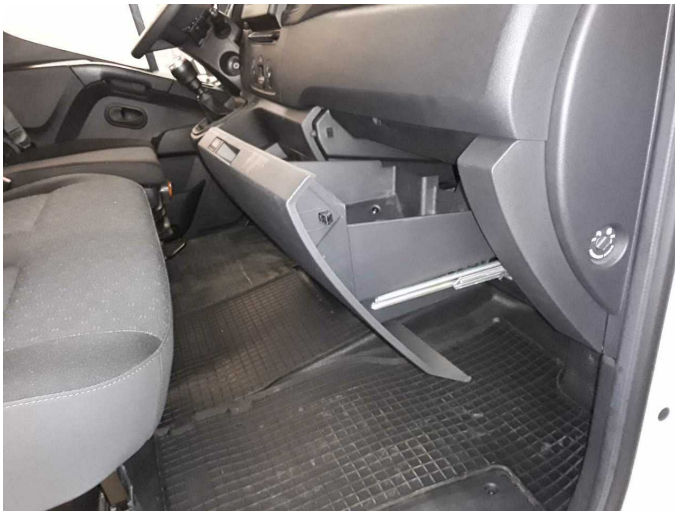


Figure 15: Misc.



Figure 16: Misc.



Figure 17: Misc.



Figure 18: Misc.



Figure 19: Misc.



Figure 20: Misc.



Figure 21: Misc.



Figure 22: Misc.



Figure 23: Misc.



Figure 24: Misc.



Figure 25: Misc.



Figure 26: Misc.



Figure 27: Misc.



Figure 28: Misc.



Figure 29: Misc.



Figure 30: Misc.



Figure 31: Misc.



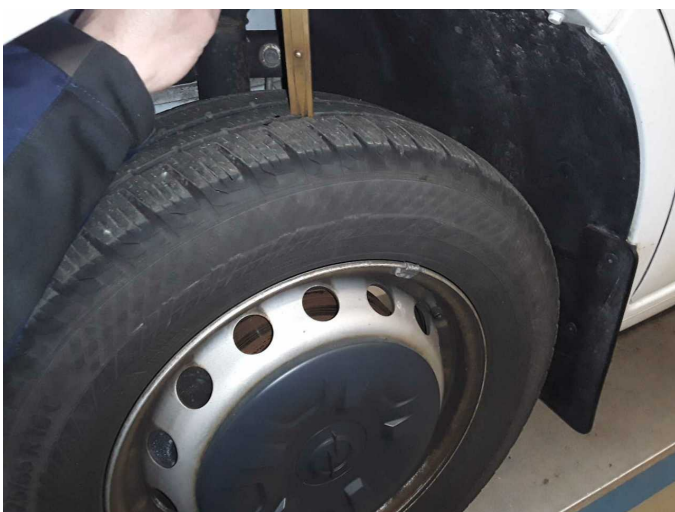
Damage 1: Sill - left side: Sill - Scratch(es) - Smart repair



Damage 1: Sill - left side: Sill - Scratch(es) - Smart repair



Damage 2: Wheel / tyres: Tyre - front - Does not meet the leasing specifications - Replace



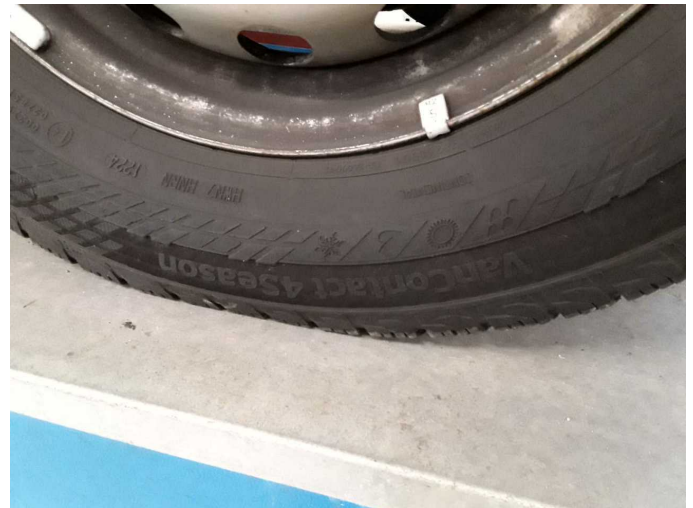
Damage 2: Wheel / tyres: Tyre - front - Does not meet the leasing specifications - Replace



Damage 2: Wheel / tyres: Tyre - front - Does not meet the leasing specifications - Replace



Damage 2: Wheel / tyres: Tyre - front - Does not meet the leasing specifications - Replace



Damage 2: Wheel / tyres: Tyre - front - Does not meet the leasing specifications - Replace



Damage 3: Braking system: Brake discs and pads - rear - Corrosion - Replace



Damage 3: Braking system: Brake discs and pads - rear - Corrosion - Replace



Damage 3: Braking system: Brake discs and pads - rear - Corrosion - Replace



Damage 3: Braking system: Brake discs and pads - rear - Corrosion - Replace



Damage 3: Braking system: Brake discs and pads - rear - Corrosion - Replace



Damage 4: Braking system: Brake discs and brake pads - front - Corrosion - Replace



Damage 4: Braking system: Brake discs and brake pads - front - Corrosion - Replace



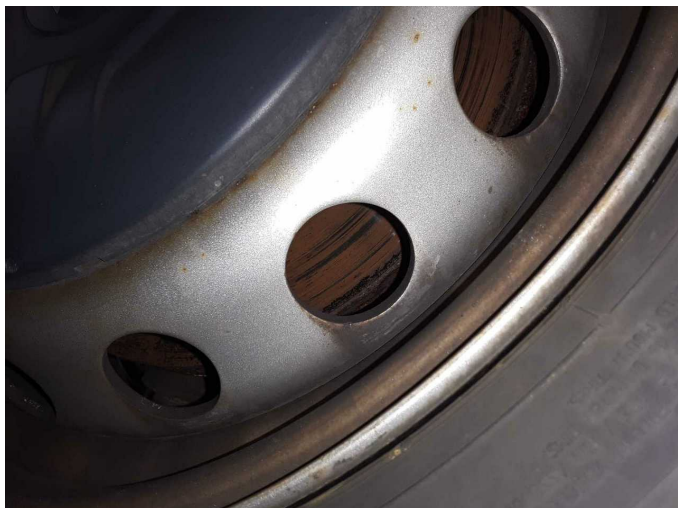
Damage 4: Braking system: Brake discs and brake pads - front - Corrosion - Replace



Damage 4: Braking system: Brake discs and brake pads - front - Corrosion - Replace



Damage 4: Braking system: Brake discs and brake pads - front - Corrosion - Replace



Damage 4: Braking system: Brake discs and brake pads - front -
Corrosion - Replace



Wartungshistorie

(gemäß Auftraggeber Informationen)

Fahrgestellnummer: W0VMR4600MB266169
Hersteller / Modell: OPEL OPEL Movano 2.3 D L2H2 2WD VA S&S

Datum	KM-Stand	Beschreibung
15.07.2025	98.073	Bremsklötze hinten; Bremssattel ern/inst
07.04.2025	88.172	Reparatur Sonstiges; Systemtest/Eigendiagnose
12.02.2025	85.462	Kraftstofffilter ern; Motoröl b. Wartung; Ölfilter ern; Regelwartungsdienst; Wartung Sonstiges
18.11.2024	78.413	Ladeluftschlauch ern; Systemtest/Eigendiagnose
31.07.2024	68.618	Bremse Sonstiges; Bremsklötze hinten; Bremsscheiben hinten
17.07.2024	67.298	Bremse Sonstiges; Bremsklötze vorne; Bremsscheiben vorne; Wartung Sonstiges
08.01.2024	61.002	AU; Systemtest/Eigendiagnose
05.07.2023	39.296	Motoröl b. Wartung; Ölfilter ern; Regelwartungsdienst; Wartung Sonstiges