

Expertise

Protocol number: 45967817
Order No. / Reference: 26503458
Inspection date: 16 Jun 2026

Manufacturer: Mercedes-Benz

Model: 316 CDI Sprinter Standard HA 7G-Tronic Plus

VIN: W1V9076331P267206



Vehicle details

Manufacturer / Type / Model / Equipment

Mercedes-Benz 316 CDI Sprinter Standard HA 7G-Tronic Plus

Vehicle Identification number W1V9076331P267206

Mileage (Read) 99,994 km

First registration 13 Oct 2020

Number of holders 1

Next periodical technical inspection 10/2026

(Report not on hand)

Power / Engine displacement 120 kw / 2,143 ccm

Fuel type / Cylinder Diesel / 4

Gearbox / Number of gears Automatic / 7

Type of drive Rear drive

Type of vehicle Van

Colour / colour code IRIDIUM SILBER

Doors / Seats 4 / 2

Upholstery type Cloth

Colour of upholstery Black

Re-import no

readiness to drive Roadworthy



Vehicle details

Maintenance booklet / proof	digital evidence / incomplete	Next maintenance in	141 Tag(e)
Last service on / at	10/2024 at 76,635 km		
Key is / should be	3 / 3	FZG documents	ZB#2 (B) was available (copy), ZB#1 (S) was not available.
		Letter No.	FW946519
Previous damage / Accident	None detectable	Repainting	None detectable
Inspection conditions	sufficient	Lifting equipment / pit	yes
Test drive	Not performed	Engine function test	Performed
readiness to drive	Roadworthy		
Manufacturer key number/ type code number	2222 / 000 000		
Emission standard	EURO 6	fine dust sticker	
Permitted total weight	3,500 kg	Empty weight	

Tyres

Mounted tyres

#	Tyre size	Type of tyre	Manufacturer	Tread depth
1)	235/65 R16 121R	All-season tyres on Steel rim with wheel cover	Continental	4mm / 4mm
2)	235/65 R16 121R	All-season tyres on Steel rim with wheel cover	Continental	6mm / 6mm

Legend: Tread depth information for the left tire is listed first, for the right tire it is listed second on the axle in the direction of travel.



Equipment

Standard equipment

- Storage compartment above windshield
- Rear towing eye
- Driver's side airbag
- Electrically adjustable and heated exterior mirrors, left and right
- Battery: fleece battery 12 V / 92 Ah
- third brake light
- Diesel particulate filter and SCR
- Entry handle on rear right corner pillar
- Electric window regulator for driver and passenger door
- 7G-TRONIC PLUS automatic transmission
- Grab handle for entry to the cargo area sliding door on the partition wall
- Instrument panel and combination instrument with various storage options
- Communication module (LTE) for digital services
- Paint finish: Solid color paint
- Headlight range control
- Breakdown management
- Radio: Radio preparation
- Wheels: Steel rims 6.5 J x 16
- Crosswind Assist
- Seats: Passenger seat armrest
- Seats: Adjustable passenger seat
- Daytime running light
- Doors: Rear doors, double-wing doors opening 180 degrees, available in two height versions
- Warning triangle
- Heat-insulating glass
- Approval N1
- Storage compartment under cockpit
- ADAPTIVE ESP (latest generation) with load- and speed-dependent driving dynamics control
- Outdoor temperature display
- Battery: fleece battery 12 V / 70 Ah
- Hill start assist
- Brake lights, adaptive
- Tachometer
- Driving light assistant
- Generator 14 V / 200 A
- Seatbelt warning device for driver's seat
- Main tank 71 liters
- HOLD function
- KEYLESS start
- Child safety locks on doors in the passenger compartment
- Headrests (2), front
- Steering wheel adjustable for tilt and height
- Mercedes-Benz emergency call system
- Upholstery: Cloth
- Radio: Pre-installation for digital radio DAB
- Sliding door on the right side
- Power steering
- Seats: Driver's seat armrest
- Start-stop function
- continuous partition wall
- First aid kit
- Lashing eyes
- Immobiliser
- Central locking with radio remote control



Extra equipment

- Passenger side airbag
- Ceiling light in the cargo/passenger compartment (with door contact)
- External suppliers
- Grab handle for entry of driver and passenger
- High roof
- Tempmatic controlled air conditioning
- Comfort roof control unit
- Cargo area floor with different paint finish
- Cable duct on side wall
- Marker lights, side
- Package: Anti-theft package
- Parameterizable special module
- Radio: Digital Radio DAB
- Tires: All-season tires
- Tires: Continental brand
- All-round license plate light, yellow, front left/rear right
- Wheels: Hydraulic jack
- Rear view camera
- Double-leaf rear door, opening to side wall
- Keys: 2 additional master keys
- Seat cover driver's seat
- Seats: Comfort driver's seat
- Seats: Lumbar support for driver's seat
- Warning light
- Electrically folding exterior mirrors
- Lockable compartment in storage area above windshield
- Chassis stabilization level 1
- Seatbelt warning device for front passenger seat
- Rear step sprung
- Terminal block for electrical connections on the driver's seat box
- Paint finish: Metallic
- Cable duct at rear portal
- Steering wheel: Multifunction steering wheel
- MBUX multimedia system with 7-inch touchscreen (High-resolution 7-inch touchscreen (960 x 540 pixels), AM/FM radio with dual tuner, Bluetooth connectivity with audio streaming and hands-free function, smartphone integration via Android Auto or Apple CarPlay, multimedia connection unit for connecting portable devices via a USB-C interface, 4 x 25 W output power, sound adjustment, separate volume control for audio and telephone, 2-way front speakers)
- Key: Multi-button radio remote control
- Passenger seat cover
- Seats: Comfort passenger seat
- Seats: Lumbar support, passenger seat
- Partition wall with 1 continuous window

Brief expert findings

Documents submitted	At the time of the inspection, the vehicle registration certificate Part 2 (title) was available, but the vehicle registration certificate Part 1 (document) was not. (Copy)
VIN comparison	The vehicle identification number (VIN) was read from the vehicle and its conformity with the submitted documents was confirmed by the undersigned during the inspection.
Inspection	The inspection conditions were sufficient for the assessment of the vehicle. Lifting equipment and/or a pit were available for examining the vehicle.
Test drive	No test drive/shunting maneuver was carried out during the inspection of the vehicle.
Engine function test	An engine test run was performed.
readiness to drive	The vehicle was roadworthy at the time of inspection.

Value reducing factors

No.	Component group	Description
1	Boot lid / rear door	Rear door - right side - dent(s) - Smooth repair work
2	Trim / covers	Boot lid - interior trim (Links + Rechts) - Missing - Replace
3	Door - rear right side	Brightware - lower - Scratch(es) - Replace
4	Wheel / tyres	Tyre - front (4mm) - Does not meet the leasing specifications - Replace
5	Trim / covers	Boot lining (Unterteile fehlen komplett) - Missing - Replace
6	Side panel - rear right side	Side panel - Deformed - Repair and paint
7	Sliding door, right	Sliding door - Dent / paintcoat damage - Repair and paint



Wear and tear

No.	Component group	Description
1	Front bumper	Front bumper (unpainted) - Scratch(es) - No deduction
2	Body	Body - Scratch(es) - No deduction
3	Body	Body - dent(s) - No deduction

The vehicle shows signs of wear and tear commensurate with its age and use.

Missing parts

Description

Documents - Log book

Order/Scope of Order

An order was placed to prepare a sales report for the described vehicle. This report includes the following:

- Description of key vehicle information
- Documentation of equipment features
(*Delivery by third-party service providers*)
- Documentation of damage, defects, missing parts
- Documentation of prior damage, unrepaired prior damage, repainting
- A brief visual or functional inspection of the equipment details, if possible.
(*Functional testing of driver assistance systems is not included in the scope of services!*)
- a photographic documentation of the vehicle

Basis for the order

This product is based on the guidelines for vehicle returns and valuations of light commercial vehicles published by Alphabet Fleet Management GmbH. The expert makes the specific findings in each individual case objectively, within the framework of the prescribed standards, based on their own expertise.

The vehicle inspection takes place in a fully assembled, unassembled state.

Damage or defects that can only be detected during disassembly/diagnostic work or through further investigation remain within the realm of prognostic risk. An increased risk exists due to concealed defects caused by fraudulent misrepresentation and which were not identifiable by the expert.

Damage or defects resulting from normal use or wear and tear of the vehicle will be accepted in accordance with the applicable standard.

There was no explicit identification or monetary consideration of the expected features within the product.

Features which, in their nature and extent, slightly exceed normal use but do not constitute unacceptable damage, will be documented and indicated as signs of wear, if applicable.

Damage or defects that, according to the applicable standard, can no longer be attributed to normal use or wear and tear are listed under "Value Reducing Factors" in the product description.

Depending on the product specification, a monetary ID can be provided. If this takes place, the costs can be 100% d or pro rata depending on the vehicle's age and mileage.

Previous damages

No apparent prior damage that had been repaired could be found on the vehicle.



Figure 1: Diagonal front (left)



Figure 2: Diagonal front (right)



Figure 3: Diagonal rear (left)



Figure 4: Diagonal rear (right)

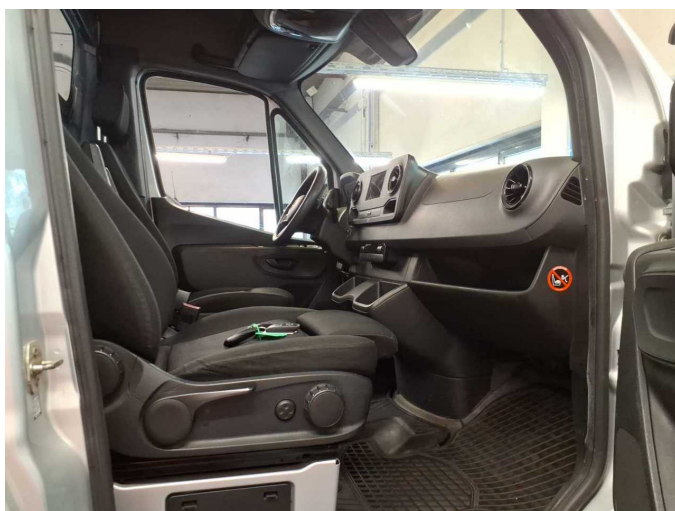


Figure 5: Interior - front



Figure 6: Interior - rear



Figure 7: Instrument cluster



Figure 8: Instrument panel



Figure 9: Interior 360° view



Figure 10: Cargo area



Figure 11: VIN



Figure 12: Mounted tyres



Figure 13: Documents



Figure 14: Misc.

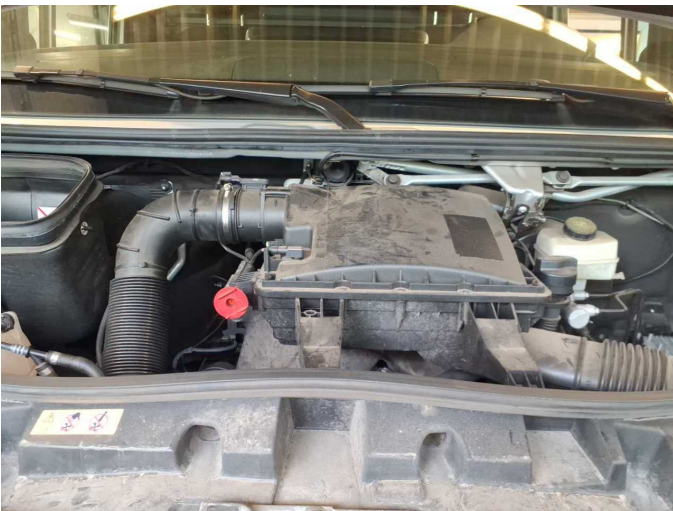


Figure 15: Misc.



Figure 16: Misc.



Figure 17: Misc.



Figure 18: Misc.



Figure 19: Misc.

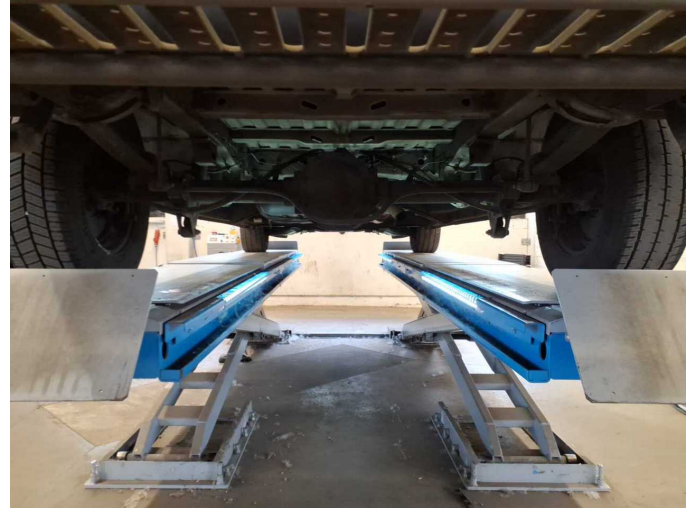


Figure 20: Misc.



Figure 21: Misc.



Figure 22: Misc.



Figure 23: Misc.

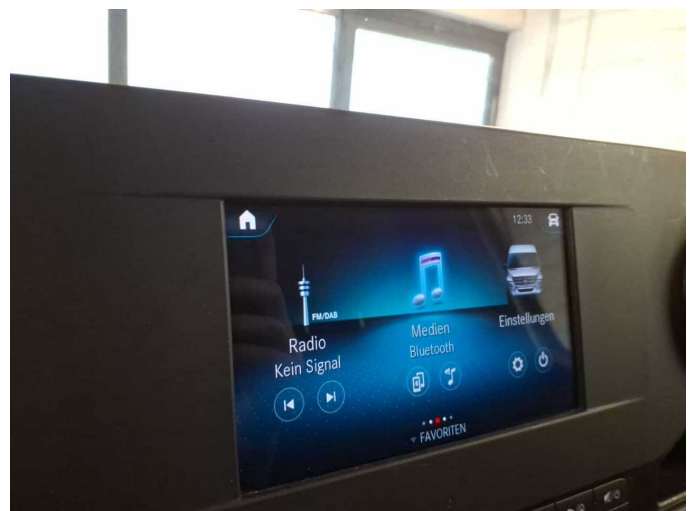


Figure 24: Misc.



Figure 25: Misc.



Figure 26: Misc.



Figure 27: Misc.



Damage 1: Boot lid / rear door: Rear door - right side - dent(s) - Smooth repair work



Damage 1: Boot lid / rear door: Rear door - right side - dent(s) - Smooth repair work



Damage 2: Trim / covers: Boot lid - interior trim (Links + Rechts) - Missing - Replace



Damage 2: Trim / covers: Boot lid - interior trim (Links + Rechts) - Missing - Replace



Damage 3: Door - rear right side: Brightware - lower - Scratch(es) - Replace



Damage 3: Door - rear right side: Brightware - lower - Scratch(es) - Replace



Damage 3: Door - rear right side: Brightware - lower - Scratch(es) - Replace



Damage 4: Wheel / tyres: Tyre - front (4mm) - Does not meet the leasing specifications - Replace



Damage 4: Wheel / tyres: Tyre - front (4mm) - Does not meet the leasing specifications - Replace



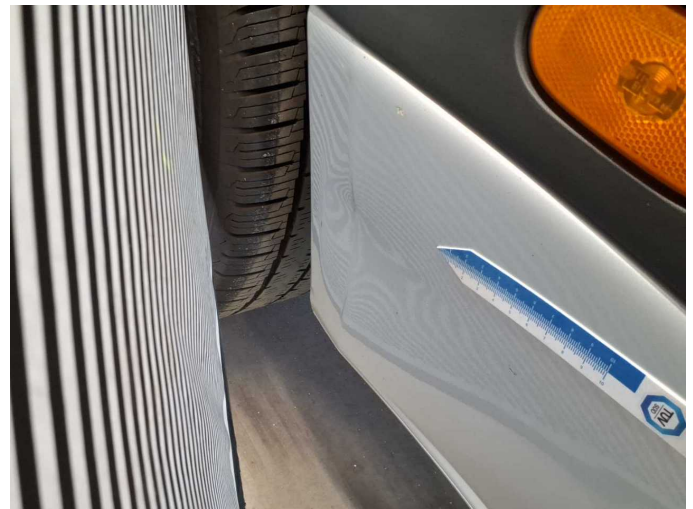
Damage 5: Trim / covers: Boot lining (Unterteile fehlen komplett) - Missing - Replace



Damage 5: Trim / covers: Boot lining (Unterteile fehlen komplett) - Missing - Replace



Damage 6: Side panel - rear right side: Side panel - Deformed - Repair and paint



Damage 6: Side panel - rear right side: Side panel - Deformed - Repair and paint



Damage 7: Sliding door, right: Sliding door - Dent / paintcoat damage - Repair and paint



Damage 7: Sliding door, right: Sliding door - Dent / paintcoat damage - Repair and paint



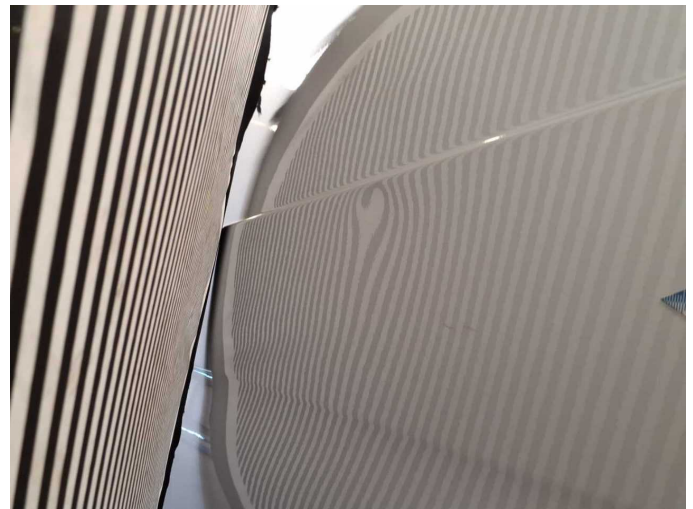
Damage 7: Sliding door, right: Sliding door - Dent / paintcoat damage - Repair and paint



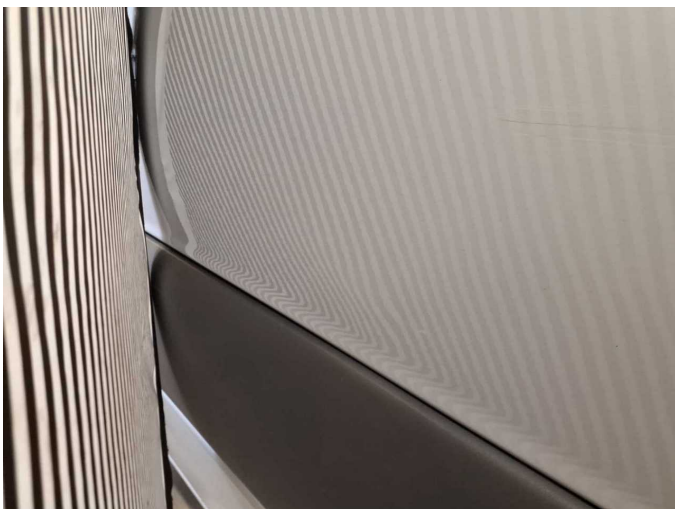
Damage 7: Sliding door, right: Sliding door - Dent / paintcoat damage - Repair and paint



Damage 7: Sliding door, right: Sliding door - Dent / paintcoat damage - Repair and paint



Damage 7: Sliding door, right: Sliding door - Dent / paintcoat damage - Repair and paint



Damage 7: Sliding door, right: Sliding door - Dent / paintcoat damage - Repair and paint



Wartungshistorie

(gemäß Auftraggeber Informationen)

Fahrgestellnummer: W1V9076331P267206
Hersteller / Modell: MERCEDES-BENZ MERCEDES-BENZ 316 CDI Sprinter Standard HA

Datum	KM-Stand	Beschreibung
13.01.2025	0	Wartung Sonstiges
16.10.2024	76.635	Bremsscheiben + Klötze v; HU + AU; Motoröl b. Wartung; Ölfilter ern; Regelwartungsdienst
28.06.2023	54.430	Bremsbelagfühler ern; Bremsklötze hinten
27.06.2022	35.207	Bremsbelagfühler ern; Bremsklötze vorne
27.01.2022	28.899	Kraftstofffilter ern; Motoröl b. Wartung; Regelwartungsdienst