

Expertise

Protocol number: 46355117
Order No. / Reference: 26612056
Inspection date: 7 Jul 2026

Manufacturer: Mercedes-Benz

Model: CLA 180 Shooting Brake 7G-DCT Progressive

VIN: W1K5M8EB9PN395768



Vehicle details

Manufacturer / Type / Model / Equipment

Mercedes-Benz CLA 180 Shooting Brake 7G-DCT Progressive

Vehicle Identification number W1K5M8EB9PN395768

Mileage (Read) 27,240 km

First registration 5 Apr 2023

Number of holders 1

Next periodical technical inspection 04/2028
(Report not on hand)

Power / Engine displacement 100 kw / 1,332 ccm

Fuel type / Cylinder Petrol / 4

Gearbox / Number of gears Automatic / 7

Type of drive Front drive

Type of vehicle Station wagon

Colour / colour code Mountaingrau Metallic

Doors / Seats 5 / 5

Upholstery type Cloth / leather combination

Colour of upholstery Black-Anthracite

Re-import no

readiness to drive Roadworthy



Vehicle details

Maintenance booklet / proof	Non-existent	Next maintenance in	-29 Tag(e)
Last service on / at	06/2025 at 15,089 km		
Key is / should be	2 / 2	FZG documents	ZB#2 (B) was available (copy), ZB#1 (S) was not available.
		Letter No.	GS687780
Previous damage / Accident	None detectable	Repainting	None detectable
Inspection conditions	sufficient	Lifting equipment / pit	yes
Test drive	Not performed	Engine function test	Performed
readiness to drive	Roadworthy		
Manufacturer key number/ type code number	2222 / AGY 00061		
Emission standard	EURO6;WLTP;AP;PI/CI; M, N1 I	fine dust sticker	
Permitted total weight	2,015 kg	Empty weight	

Tyres

Mounted tyres

#	Tyre size	Type of tyre	Manufacturer	Tread depth
1)	225/45 R18 91W	Summer tyres on Light alloy	Bridgestone	4mm / 4mm
2)	225/45 R18 91W	Summer tyres on Light alloy	Bridgestone	4mm / 4mm

Additional tyres

#	Tyre size	Type of tyre	Manufacturer	Tread depth
1)	205/55 R17 95V	Winter tyres on Light alloy	Bridgestone	5mm / 5mm
2)	205/55 R17 95V	Winter tyres on Light alloy	Bridgestone	6mm / 6mm

Legend: Tread depth information for the left tire is listed first, for the right tire it is listed second on the axle in the direction of travel.



Equipment

Standard equipment

- ADAPTIVE BRAKE with HOLD function, hill start assist, pre-filling and drying brakes in wet conditions
- Airbag: Kneebag for driver
- Airbag: Windowbag for driver and front passenger
- Traction control (ASR)
- ATTENTION ASSIST
- Basic services
- Brake assist, active
- Tachometer
- DYNAMIC SELECT
- Electronic Stability Program (ESP)
- Electric windows (4-way)
- Velour floor mats in black
- Speed Limit Assistant
- Halogen headlights with integrated LED daytime running lights
- Interior headliner fabric crystal grey
- THERMATIC automatic climate control
- Front headrests are height-adjustable
- Steering wheel: Multifunction sports steering wheel in leather
- Mercedes-Benz emergency call system
- Otto particulate filter
- Package: Seating comfort
- Radio: Extended MBUX functions
- Radio accessories: Digital radio (DAB)
- Radio accessories: USB interface in the storage compartment & 2 USB interfaces in the rear center console
- Wheels: 45.7 cm (18") alloy wheels, 4-spoke design with 10 double spokes
- Seat belts CLA-Class
- Seats: Comfort seats
- Seats: Rear seat backrests are split 40:20:40 and foldable
- 12V power outlet
- Cruise control
- High-visibility vest for drivers
- Central locking
- Airbag for driver and front passenger
- Airbag: Automatic passenger airbag deactivation
- Airbag: Side airbag for driver and front passenger
- Anti-lock braking system (ABS)
- Foldable armrest for driver and front passenger
- Left and right exterior mirrors, heated and electrically adjustable, painted in body color
- Double cup holder at the front
- Third brake light in LED technology
- ECO start/stop function
- Chassis: Comfort chassis
- electric parking brake
- Luggage net on driver and passenger seatbacks
- Transmission: 7G-DCT dual-clutch automatic transmission, 7-speed
- Lockable glove compartment
- KEYLESS-GO start function
- Rear headrests (3)
- Steering wheel shift paddles
- Steering: Direct steering
- Light and rain sensor
- Net in the passenger footwell
- Package: Light and Visibility Package
- Upholstery: ARTICO leatherette/Bertrix fabric
- Radio: MBUX multimedia system
- Radio accessories: Communication module (LTE) for using Mercedes me connect services
- Tire pressure monitoring system (TPMS)
- Gearshift lever with additional elements in silver chrome
- Windscreen wipers with rain sensor
- Seats: iSize child seat anchorages with top tether on the outer seats
- Lane Keeping Assist, active
- Bumpers in body color
- Touchpad
- Electronic immobilizer
- Decorative elements with carbon look

Extra equipment

- Paint finish: Metallic (according to sample card)
- Package: Parking package with reversing camera (including Active Parking Assist with PARKTRONIC - reversing camera)
- Heated seats for driver and front passenger
- Type designation removed from tailgate
- Navigation accessories: Pre-installation for Live Traffic Information
- Radio accessories: Advanced sound system (with 10 speakers and 225 watts system power)
- Partition net for luggage compartment separation and occupant protection



Brief expert findings

Documents submitted	At the time of the inspection, the vehicle registration certificate Part 2 (title) was available, but the vehicle registration certificate Part 1 (document) was not. (Copy)
VIN comparison	The vehicle identification number (VIN) was read from the vehicle and its conformity with the submitted documents was confirmed by the undersigned during the inspection.
Inspection	The inspection conditions were sufficient for the assessment of the vehicle. Lifting equipment and/or a pit were available for examining the vehicle.
Test drive	No test drive/shunting maneuver was carried out during the inspection of the vehicle.
Engine function test	An engine test run was performed.
readiness to drive	The vehicle was roadworthy at the time of inspection.

Value reducing factors

No.	Component group	Description
1	Door - rear right side	Door - Scratch(es) - Smart repair
2	Wheel / tyres	Alloy rim - front right side - Scratch(es) - Loss in value
3	Wheel / tyres	Alloy rim - front left side - Scratch(es) - Loss in value
4	Misc.	Inspection / maintenance - Due - Perform
5	Front bumper	Front bumper - Scratched - Paint

Wear and tear

No.	Component group	Description
1	2nd wheel set	Alloy rim set - complete - Scratched - No deduction
2	Bonnet	Bonnet - Stone chips - No deduction
3	Vehicle glazing	Windscreen - Stone chips - No deduction

The vehicle shows signs of wear and tear commensurate with its age and use.

Order/Scope of Order

An order was placed to prepare a sales report for the described vehicle. This report includes the following:

- Description of key vehicle information
- Documentation of equipment features
(*Delivery by third-party service providers*)
- Documentation of damage, defects, missing parts
- Documentation of prior damage, unrepaired prior damage, repainting
- A brief visual or functional inspection of the equipment details, if possible.
(*Functional testing of driver assistance systems is not included in the scope of services!*)
- a photographic documentation of the vehicle



Basis for the order

This product is based on the guidelines for vehicle returns and valuations published by Alphabet Fleet GmbH. The expert makes the specific findings in each individual case objectively, within the framework of the prescribed standards, based on their own expertise.

The vehicle inspection takes place in a fully assembled, unassembled state.

Damage or defects that can only be detected during disassembly/diagnostic work or through further investigation remain within the realm of prognostic risk. An increased risk exists due to concealed defects caused by fraudulent misrepresentation and which were not identifiable by the expert.

Damage or defects resulting from normal use or wear and tear of the vehicle will be accepted in accordance with the applicable standard.

There was no explicit identification or monetary consideration of the expected features within the product.

Features which, in their nature and extent, slightly exceed normal use but do not constitute unacceptable damage, will be documented and indicated as signs of wear, if applicable.

Damage or defects that, according to the applicable standard, can no longer be attributed to normal use or wear and tear are listed under "Value Reducing Factors" in the product description.

Depending on the product specification, a monetary ID can be provided. If this takes place, the costs can be 100% d or pro rata depending on the vehicle's age and mileage.

Previous damages

No apparent prior damage that had been repaired could be found on the vehicle.

Comments

- Wartungshistorie gemäß Auftraggeber Informationen.
- Winterradsatz ist kein Bestandteil des Auslieferungsumfangs.



Figure 1: Diagonal front (left)



Figure 2: Diagonal front (right)



Figure 3: Diagonal rear (left)



Figure 4: Diagonal rear (right)



Figure 5: Interior - front



Figure 6: Interior - rear



Figure 7: Instrument cluster



Figure 8: Instrument panel



Figure 9: Interior 360° view



Figure 10: Cargo area



Figure 11: VIN



Figure 12: Mounted tyres



Figure 13: Documents



Figure 14: Additional tyres



Figure 15: Navigation



Figure 16: Misc.



Figure 17: Misc.



Figure 18: Misc.



Figure 19: Misc.



Figure 20: Misc.



Figure 21: Misc.



Figure 22: Misc.

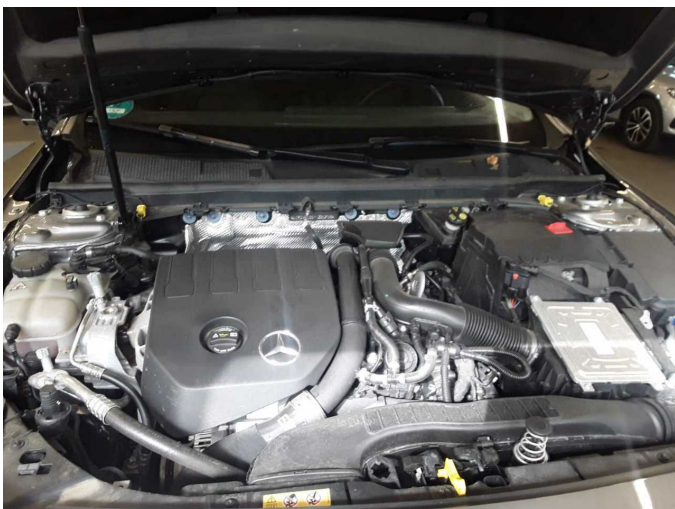


Figure 23: Misc.



Figure 24: Misc.



Figure 25: Misc.



Figure 26: Misc.



Figure 27: Misc.



Figure 28: Misc.



Figure 29: Misc.



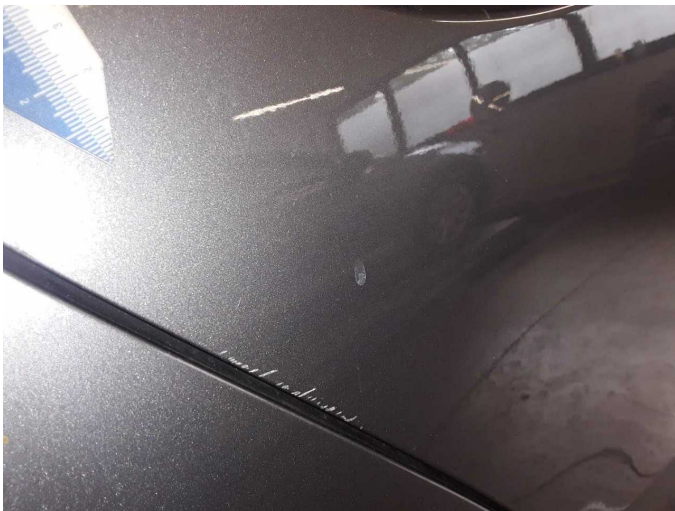
Figure 30: Misc.



Figure 31: Misc.



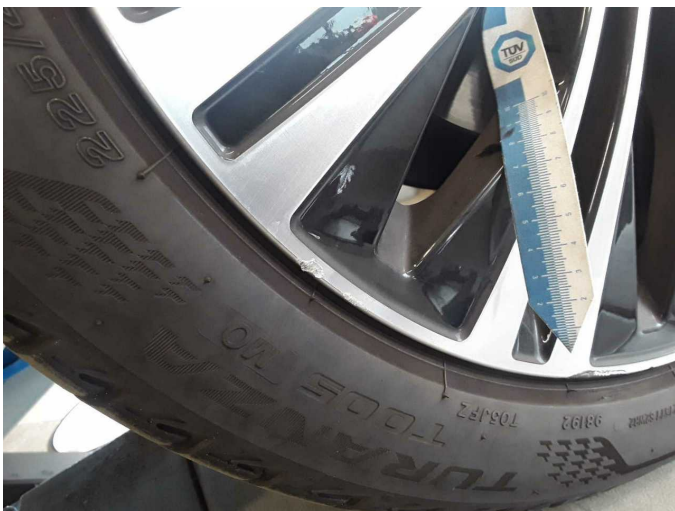
Damage 1: Door - rear right side: Door - Scratch(es) - Smart repair



Damage 1: Door - rear right side: Door - Scratch(es) - Smart repair



Damage 2: Wheel / tyres: Alloy rim - front right side - Scratch(es) - Loss in value



Damage 2: Wheel / tyres: Alloy rim - front right side - Scratch(es) - Loss in value



Damage 3: Wheel / tyres: Alloy rim - front left side - Scratch(es) - Loss in value



Damage 3: Wheel / tyres: Alloy rim - front left side - Scratch(es) - Loss in value



Damage 4: Misc.: Inspection / maintenance - Due - Perform



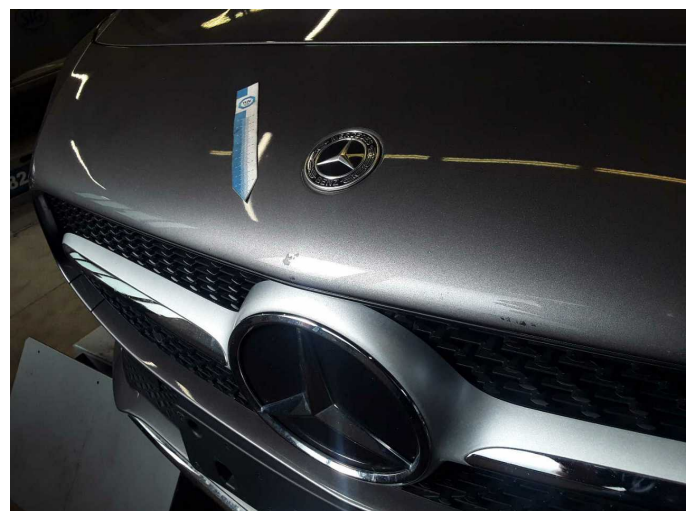
Damage 5: Front bumper: Front bumper - Scratched - Paint



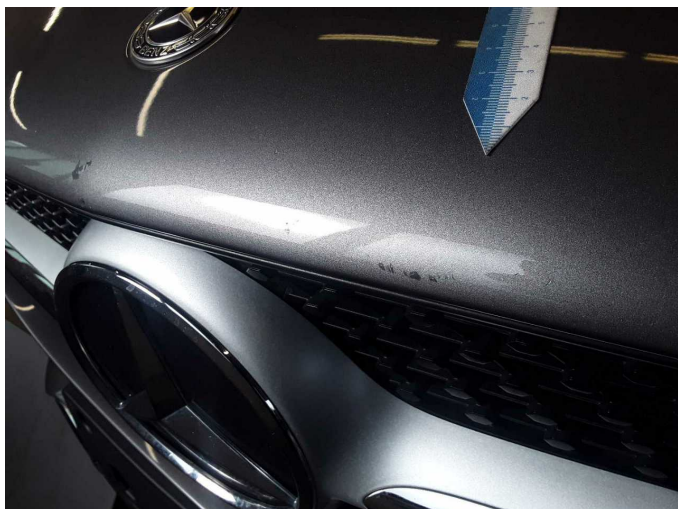
Damage 5: Front bumper: Front bumper - Scratched - Paint



Damage 5: Front bumper: Front bumper - Scratched - Paint



Damage 5: Front bumper: Front bumper - Scratched - Paint



Damage 5: Front bumper: Front bumper - Scratched - Paint



Wartungshistorie

(gemäß Auftraggeber Informationen)

Fahrgestellnummer: W1K5M8EB9PN395768

Hersteller / Modell: MERCEDES-BENZ MERCEDES-BENZ CLA 180 Shooting Brake
7G-DCT Progressive

Datum	KM-Stand	Beschreibung
13.04.2026	25.652	HU + AU
05.06.2025	15.089	Regelwartungsdienst