

Expertise

Protocol number: 45682214
Order No. / Reference: 26325255
Inspection date: 28 May 2026

Manufacturer: Volvo

Model: XC60 T6 AWD Plug-in Hybrid Plus Bright

VIN: LYVUZH1V7PB303581



Vehicle details

Manufacturer / Type / Model / Equipment

Volvo XC60 T6 AWD Plug-in Hybrid Plus Bright

Vehicle Identification number LYVUZH1V7PB303581

Mileage (Read) 81,163 km

First registration 3 Apr 2023

Number of holders 1

Power / Engine displacement 186 kw / 1,969 ccm

Fuel type / Cylinder Hybr.B/E ext.auf1 / 4

Gearbox / Number of gears Automatic / 8

Type of drive All-wheel drive

Type of vehicle SUV

Colour / colour code Crystal Weiß-Perleffekt

Doors / Seats 5 / 5

Upholstery type Leather

Colour of upholstery Brown

Vehicle with smoke odor no



Vehicle details			
Maintenance booklet / proof	Available / complete	Next maintenance in	21,659 km
Last service on / at	10/2025 at 72,822 km		
Key is / should be	2 / 2	FZG documents	ZB#2 (B) was available (copy), ZB#1 (S) was not available.
		Letter No.	GS761034
Previous damage / Accident	None detectable	Repainting	None detectable
Inspection conditions	sufficient	Lifting equipment / pit	yes
Test drive	Not performed	Engine function test	Performed
Manufacturer key number/ type code number	9101 / BRS 00017		
Emission standard	EURO6;WLTP;AP;PI/CI; M, N1 I	fine dust sticker	
Permitted total weight	2,660 kg	Empty weight	

Tyres

Mounted tyres				
#	Tyre size	Type of tyre	Manufacturer	Tread depth
1)	235/55 R19 105V	Summer tyres on Light alloy	Continental	6mm / 6mm
2)	235/55 R19 105V	Summer tyres on Light alloy	Continental	6mm / 6mm
Additional tyres				
#	Tyre size	Type of tyre	Manufacturer	Tread depth
1)	235/60 R18 107W	Winter tyres on Light alloy	Continental	7mm / 7mm
2)	235/60 R18 107W	All-season tyres on Light alloy	Continental	8 mm
	235/60 R18 107W	Winter tyres on Light alloy	Continental	8 mm

Legend: Tread depth information for the left tire is listed first, for the right tire it is listed second on the axle in the direction of travel.

TÜV SÜD Auto Partner GmbH
Wiesenring 2
04159 Leipzig

Inspection location
Mosolf SE & Co.KG
Faberweg 25
73230 Kirchheim unter Teck



Equipment



Standard equipment

- Advanced air purification system with fine dust filtration according to air quality standard PM2.5
- Air purification system with activated carbon filter (automatic recirculation and pre-ventilation of the interior when the vehicle is unlocked)
- Airbag, side airbags for driver and front passenger and head/shoulder airbags for all occupants
- Aluminum door sill plates with Volvo lettering at the front
- Ambient lighting (Extended interior lighting with: - Ambient lighting front and rear - Exit lights front and rear - Work light on the tailgate - Illuminated door pockets and door openers front and rear - Rear footwell lighting - Rear reading lights)
- Automatic climate control with separate temperature control for driver and front passenger (and additional air vents for the 2nd row of seats (integrated in the B-pillar))
- Automatic emergency braking (emergency braking mechanism after the deployment of the airbags or seatbelt pretensioners to prevent secondary accidents)
- Cargo area roller blind
- Central locking with two remote controls and integrated emergency keys (automatic locking of doors while driving (can be deactivated) - comfort opening/closing of side windows and, if applicable, sunroof via remote control - panic function integrated into the remote control)
- Charging box under the cargo floor
- Child safety lock for the rear doors (electric)
- Chrome applications in the front bumper
- Chrome applications on the rear of the vehicle
- Chrome trim strip in the door sill area
- Deactivation of the high-voltage battery (in case of a collision)
- Digital instrumentation 2nd generation (Full graphic 12.3" driver display (31.2 cm diagonal) with two variable round instruments and information display (e.g. for navigation map view))
- Drive Mode (driving mode settings for engine, transmission, steering and brakes)
- Driver and passenger side airbags with two-stage deployment system
- Electric parking brake
- Electrically folding exterior mirrors
- Electronic Stability Control (ESC)
- Emergency brake lights (brake lights flash rapidly during heavy deceleration; hazard warning lights are automatically activated below 10 km/h)
- First aid kit and warning triangle
- Fog sensor for automatic activation of the defroster function
- Glazing: Colored glazing
- Heated exterior mirrors and rear window (automatic)
- Hill Descent Control (HDC)
- Hooks for carrier bags in the luggage compartment (two on each side)
- ABS - Anti-lock Braking System
- Acoustic Vehicle Alerting System (AVAS) (Acoustic pedestrian/cyclist protection through artificially generated driving noises in the speed range up to 20 km/h)
- Active safety belts with belt tensioners
- Airbag, driver's knee airbag
- All-wheel drive (AWD) (depending on the driving mode)
- Aluminum roof rails (integrated)
- Android infotainment system (9" touchscreen (22.9 cm diagonal) - Bluetooth hands-free system incl. audio streaming - Digital vehicle owner's manual - Digital radio reception (DAB+) - 2 USB-C ports (compatible with Apple iPod/iPhone/iPad))
- Automatic tailgate (electric)
- Charging cable Schuko/Type 2 (Mode 2) (7 m length, 1-phase, 10A (for connection to a standard 230-volt household socket))
- Digital Services (Google Services (includes Google Maps, Google Assistant, Google Play Store and unlimited data) - Volvo On Call (includes, among other things, alerting the Volvo On Call service center at the touch of a button as well as additional convenience services via the Volvo CarsApp, such as locking and unlocking the vehicle, displaying the vehicle position and digital manual))
- Electric auxiliary heater with timer
- Electric windows front and rear (with auto-down and auto-up function)
- Electrically adjustable exterior mirrors
- Electronic differential lock
- Front and rear parking sensors with automatic braking intervention (rear)
- Front center armrest with integrated storage compartment and cup holders
- Front seat belt height adjustment
- Headrests (5) front and rear
- Headrests of the 2nd row of seats can be folded down (electrically)
- Hill Start Assist (HSA)
- Illuminated makeup mirror for driver and front passenger
- Immobilizer (deactivation of the high-voltage battery in the event of a collision)
- Intelligent driver information system (delays incoming calls or vehicle information in dangerous situations)
- Interior and exterior mirrors automatically dimming
- ISOFIX mounting for the outer rear seats
- Keyless Drive (electronic access system) (with sensor-controlled tailgate, illuminated door handles and floor lights)
- Lashing eyes in the luggage compartment (foldable)
- LED headlights "Thor's Hammer" (with high beam assist and integrated LED daytime running lights)
- LED turn signals integrated into the exterior mirrors
- Luggage compartment partition net



- Interior lighting (headliner, front reading lights, front ambient lighting, front footwell, storage compartment behind center console, glove compartment and luggage compartment)
- Keyless Start (electronic engine start system)
- On-board computer (with vehicle control functions)
- Package: Seat Comfort Package (Electrically adjustable front passenger seat - Electrically adjustable driver's seat with memory function for driver's seat and exterior mirror settings (stored in remote control) - Lumbar support (4-way electrically adjustable) for driver and front passenger seats - Memory function for front passenger seat - Adjustable leg support for driver and front passenger seats)
- Power outlet (12-volt connection in the luggage compartment)
- Radio accessories: Subwoofer
- Rain sensor
- Rear seats in a 40/60 split or completely foldable with pass-through function
- Rear view camera
- Roof edge spoiler
- Safety braking system with disc brakes all around (internally ventilated) (automatic brake system pre-tensioning, brake assist and automatic hold function)
- Seats: Driver and front passenger seats height adjustable (electrically) (including manual tilt adjustment for the driver's seat)
- Speed-sensitive power steering
- Stainless steel loading sill protector in the luggage compartment
- Steering wheel adjustable for height and reach
- Steering wheel: Three-spoke steering wheel, leather-free
- Tire pressure monitoring system (with tire-specific pressure loss warning)
- Upholstery: Leather/imitation leather comfort seats anthracite (incl. rear center armrest - insert: metal mesh - headliner: light beige)
- Volvo On Call (Alerting the Volvo On Call service center at the touch of a button, as well as additional convenience services via the Volvo Cars App, such as locking and unlocking the vehicle, displaying the vehicle position and digital manual.)
- Wheels: 19" 5-twin-spoke sport design alloy wheels, diamond cut/ high-gloss black (tires 235/55 R19 with rims 7.5 x 19")
- Whiplash Protection System (WHIPS) (including immersion protection on all seats and energy-absorbing front seat cushions)
- One Pedal Drive (acceleration and deceleration to a standstill via the accelerator pedal - activation/deactivation via the menu - recuperation (brake energy recovery) as soon as the foot is taken off the accelerator pedal, to optimize the range)
- Outdoor temperature display
- Package: Winter Package (front seat heating - rear seat heating - steering wheel heating)
- Panoramic glass sliding sunroof with lifting function (electric) (with integrated, continuously adjustable sunshade)
- Parking ticket holder
- Passenger side airbag can be deactivated
- Phone: Inductive smartphone charging system (Qi standard) (Wirelessly charges smartphones on a charging pad (compatibility required))
- Preparation for Trailer Stability Assist (TSA)
- Radio accessories: Smartphone integration Apple CarPlay
- Radio accessories: Two USB-C ports on the back of the center console
- Radio: Audio system High Performance Sound (220 watts of power - 10 speakers)
- Run-off Road Protection (preventive protection system in case of unintentional leaving the road or impending rollovers including emergency call via Volvo On Call and door unlocking)
- Safety Assistance (Automatic emergency braking system with detection of vehicles, cyclists, pedestrians and large animals including intersection braking assistant and emergency braking assistant for oncoming traffic - Connected Safety - Driver Alert - Attention warning - Distance warning - Variable speed limiter - Cruise control - Lane Keeping Aid (LKA) - Active lane keeping assistant - Oncoming Lane Mitigation - Ready to Drive notification - Road Edge Detection - Road Sign Information (RSI) - Traffic sign recognition)
- Start/Stop technology
- Steering wheel: Multifunction buttons on the steering wheel
- Third brake light (emergency brake lights (brake lights flash rapidly in case of heavy deceleration; hazard warning lights are automatically activated at speeds below 10 km/h))
- Transmission: 8-speed automatic transmission
- Warning tone/indicator when seat belts are not fastened (for all seats)
- Wheels: Tire sealant (Incl. 12-volt compressor, maximum speed 80 km/h)



Extra equipment

- Package: Light Package (Headlight cleaning system - Full LED headlights "Thor's Hammer" Active High Beam with extended high beam, dynamic cornering lights, intelligent high beam assistant with adaptive headlight range control and integrated LED daytime running lights)
- Paint finish: Crystal White Pearl Effect
- Parking camera with 360° surround view (including front, side and rear parking aid with automatic braking intervention (rear))
- Upholstery: Nappa leather/imitation leather comfort seats (perforated front seats) Amber Brown (with active ventilation and electrically adjustable side bolsters for driver and front passenger seats - incl. rear center armrest - gearshift lever made of Swedish crystal glass by Orrefors - inlay: Linear Lime - headliner: Anthracite)
- Alarm system with motion/tilt sensor (security lock)
- Package: Driver Assistance Package (Driver Assistance: - Adaptive Cruise Control - Emergency Stop Assist - Automatic emergency braking system if warnings are ignored - Pilot Assist - Lane Keeping Assist up to speeds of 130 km/h Driver Awareness: - Blind Spot Information System - Blind Spot Assist including Lane Change Warning for rapidly approaching vehicles including steering intervention - Cross Traffic Alert - Cross-traffic alert with braking intervention - Rear Impact Mitigation - Preventive protection in case of an impending rear-end collision)
- Windscreen, heater

Brief expert findings

Documents submitted	At the time of the inspection, the vehicle registration certificate Part 2 (title) was available, but the vehicle registration certificate Part 1 (document) was not. (Copy)
VIN comparison	The vehicle identification number (VIN) was read from the vehicle and its conformity with the submitted documents was confirmed by the undersigned during the inspection.
Inspection	The inspection conditions were sufficient for the assessment of the vehicle. Lifting equipment and/or a pit were available for examining the vehicle.
Test drive	No test drive/shunting maneuver was carried out during the inspection of the vehicle.
Engine function test	An engine test run was performed.

Value reducing factors

No.	Component group	Description
1	Equipment	Tirefit filler - Empty - Replace
2	Front bumper	Protection strip - centre - Damaged - Replace
3	Wheel / tyres	Alloy rim - front right side - Scratched - Loss in value
4	Front bumper	Front bumper - Scratch(es) - Smart repair
5	Wheel / tyres	Alloy rim - rear right side - Scratched - Loss in value
6	Seat - rear	Upholstery - Damaged - Replace
7	Rear bumper	Rear bumper - Scratch(es) - Paint
8	Body	Body - Damage by hail - repair according to calculation

Wear and tear

No.	Component group	Description
1	Interior	Interior (Verschmutzt,Kratzer) - Abrasion
2	Body	Body (Kratzer,Steinschläge) - dent(s)
3	Vehicle glazing	Windscreen - Stone chips - No deduction

The vehicle shows signs of wear and tear commensurate with its age and use.



Order/Scope of Order

An order was placed to prepare a sales report for the described vehicle. This report includes the following:

- Description of key vehicle information
- Documentation of equipment features
(Delivery by third-party service providers)
- Documentation of damage, defects, missing parts
- Documentation of prior damage, unrepaired prior damage, repainting
- A brief visual or functional inspection of the equipment details, if possible.
(Functional testing of driver assistance systems is not included in the scope of services!)
- a photographic documentation of the vehicle

Basis for the order

This product is based on the guidelines for vehicle returns and valuations published by Alphabet Fleet GmbH. The expert makes the specific findings in each individual case objectively, within the framework of the prescribed standards, based on their own expertise.

The vehicle inspection takes place in a fully assembled, unassembled state.

Damage or defects that can only be detected during disassembly/diagnostic work or through further investigation remain within the realm of prognostic risk. An increased risk exists due to concealed defects caused by fraudulent misrepresentation and which were not identifiable by the expert.

Damage or defects resulting from normal use or wear and tear of the vehicle will be accepted in accordance with the applicable standard.

There was no explicit identification or monetary consideration of the expected features within the product.

Features which, in their nature and extent, slightly exceed normal use but do not constitute unacceptable damage, will be documented and indicated as signs of wear, if applicable.

Damage or defects that, according to the applicable standard, can no longer be attributed to normal use or wear and tear are listed under "Value Reducing Factors" in the product description.

Depending on the product specification, a monetary ID can be provided. If this takes place, the costs can be 100% or pro rata depending on the vehicle's age and mileage.

Previous damages

No apparent prior damage that had been repaired could be found on the vehicle.

Comments

Der beiliegende Winterradsatz ist kein Bestandteil der Ausstattung.



Figure 1: Diagonal front (left)



Figure 2: Diagonal front (right)



Figure 3: Diagonal rear (left)



Figure 4: Diagonal rear (right)



Figure 5: Interior - front



Figure 6: Interior - rear



Figure 7: Instrument cluster



Figure 8: Instrument panel



Figure 9: Interior 360° view



Figure 10: Cargo area



Figure 11: VIN



Figure 12: Mounted tyres

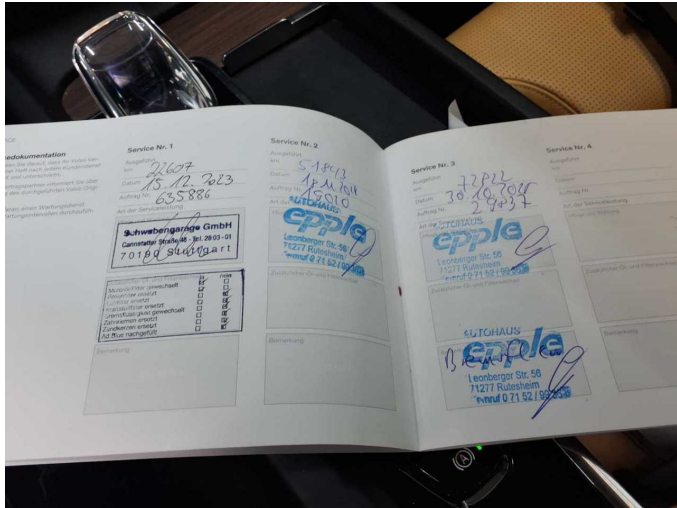


Figure 13: Documents



Figure 14: Documents

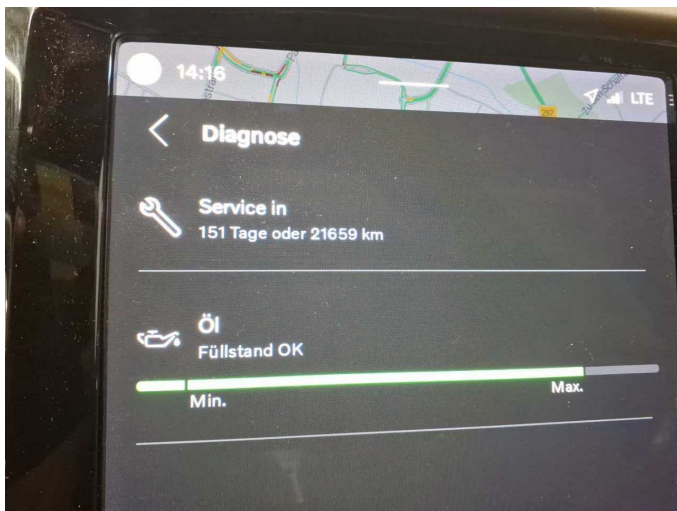


Figure 15: Documents



Figure 16: Additional tyres

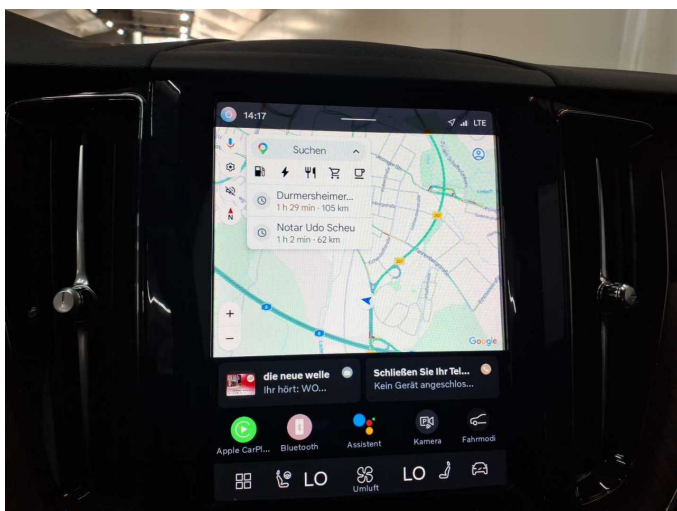


Figure 17: Navigation



Figure 18: Misc.



Figure 19: Misc.



Figure 20: Misc.



Figure 21: Misc.

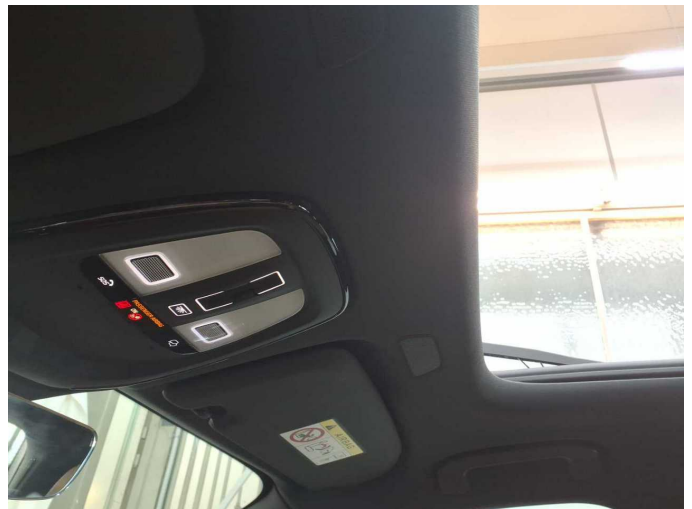


Figure 22: Misc.



Figure 23: Misc.



Figure 24: Misc.



Figure 25: Misc.



Figure 26: Misc.



Figure 27: Misc.



Figure 28: Misc.

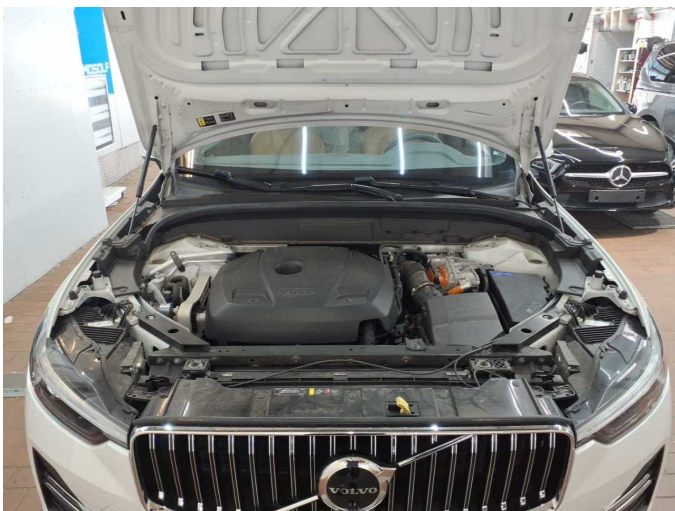


Figure 29: Misc.



Figure 30: Misc.



Figure 31: Misc.



Figure 32: Misc.

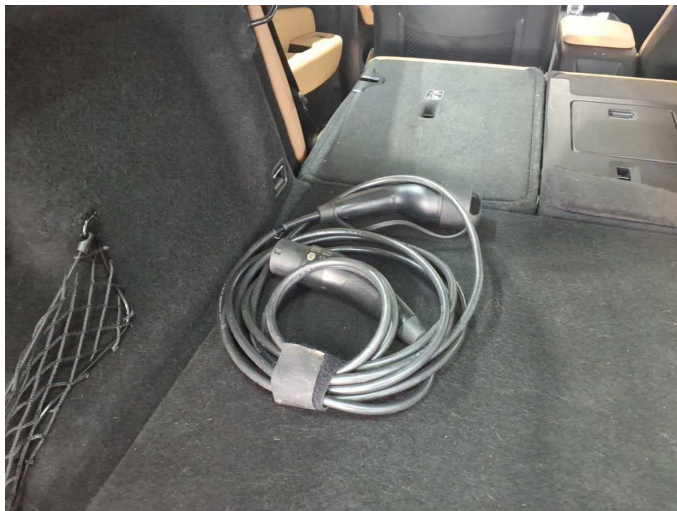


Figure 33: Misc.



Figure 34: Misc.



Figure 35: Misc.



Figure 36: Misc.



Figure 37: Misc.



Figure 38: Misc.



Damage 1: Equipment: Tirefit filler - Empty - Replace



Damage 2: Front bumper: Protection strip - centre - Damaged - Replace



Damage 2: Front bumper: Protection strip - centre - Damaged - Replace



Damage 3: Wheel / tyres: Alloy rim - front right side - Scratched - Loss in value



Damage 3: Wheel / tyres: Alloy rim - front right side - Scratched - Loss in value



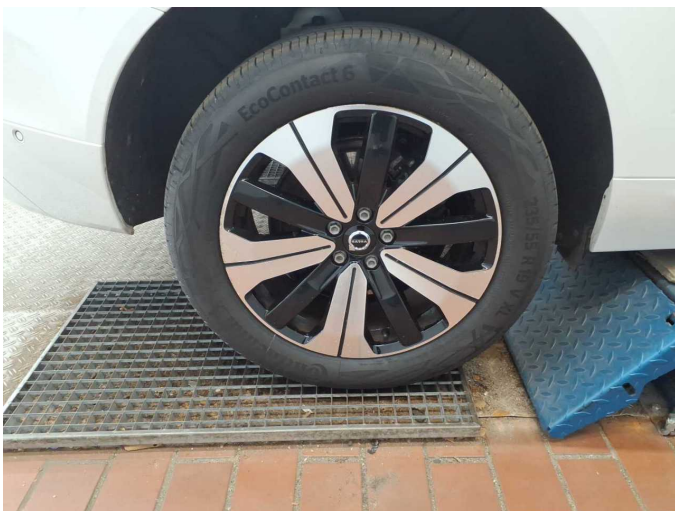
Damage 3: Wheel / tyres: Alloy rim - front right side - Scratched - Loss in value



Damage 4: Front bumper: Front bumper - Scratch(es) - Smart repair



Damage 4: Front bumper: Front bumper - Scratch(es) - Smart repair



Damage 5: Wheel / tyres: Alloy rim - rear right side - Scratched - Loss in value



Damage 5: Wheel / tyres: Alloy rim - rear right side - Scratched - Loss in value



Damage 5: Wheel / tyres: Alloy rim - rear right side - Scratched - Loss in value



Damage 5: Wheel / tyres: Alloy rim - rear right side - Scratched - Loss in value



Damage 6: Seat - rear: Upholstery - Damaged - Replace



Damage 6: Seat - rear: Upholstery - Damaged - Replace



Damage 7: Rear bumper: Rear bumper - Scratch(es) - Paint



Damage 7: Rear bumper: Rear bumper - Scratch(es) - Paint



Damage 7: Rear bumper: Rear bumper - Scratch(es) - Paint



Damage 8: Body: Body - Damage by hail - repair according to calculation



Damage 8: Body: Body - Damage by hail - repair according to calculation



Damage 8: Body: Body - Damage by hail - repair according to calculation



Damage 8: Body: Body - Damage by hail - repair according to calculation



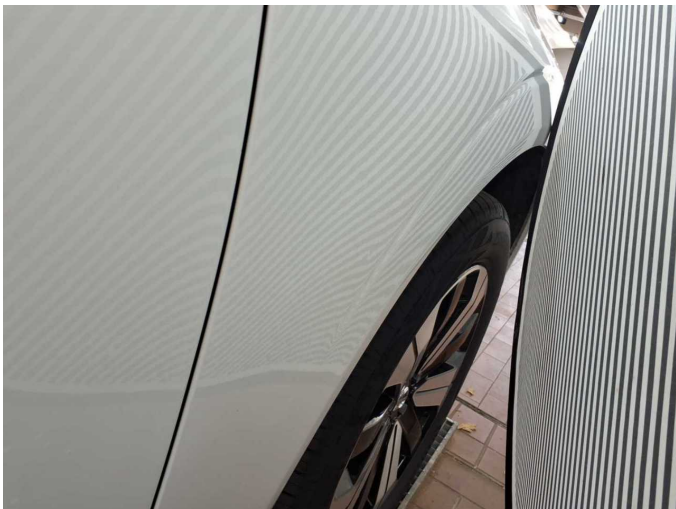
Damage 8: Body: Body - Damage by hail - repair according to calculation



Damage 8: Body: Body - Damage by hail - repair according to calculation



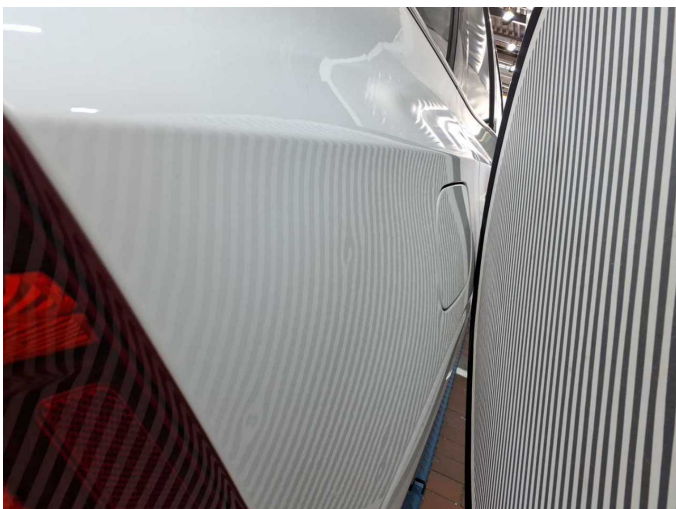
Damage 8: Body: Body - Damage by hail - repair according to calculation



Damage 8: Body: Body - Damage by hail - repair according to calculation



Damage 8: Body: Body - Damage by hail - repair according to calculation



Damage 8: Body: Body - Damage by hail - repair according to calculation



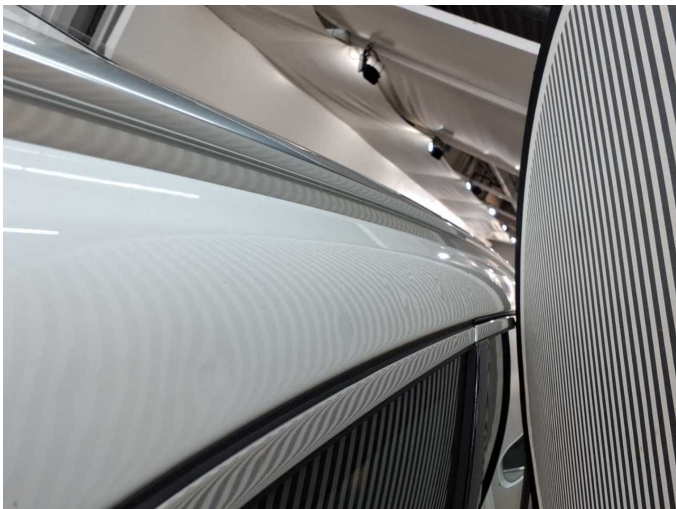
Damage 8: Body: Body - Damage by hail - repair according to calculation



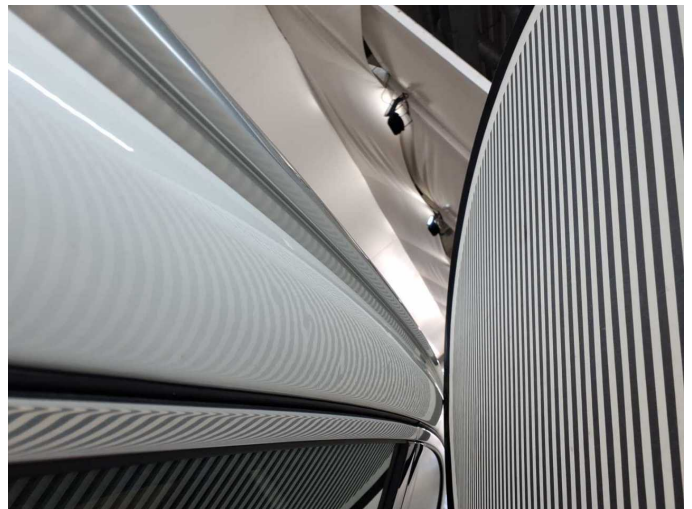
Damage 8: Body: Body - Damage by hail - repair according to calculation



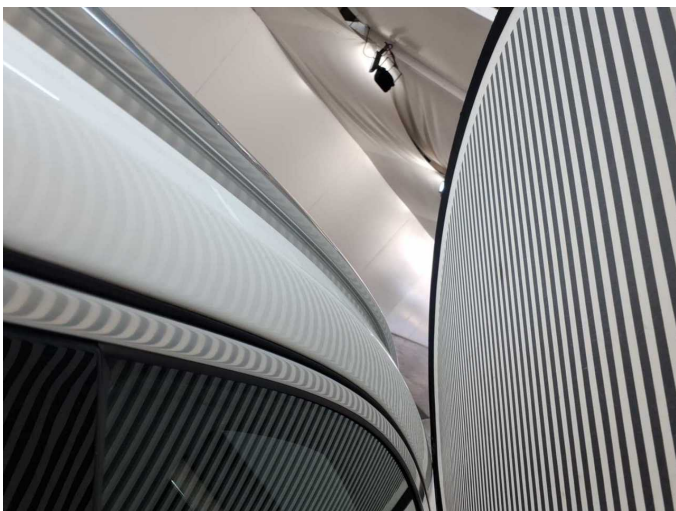
Damage 8: Body: Body - Damage by hail - repair according to calculation



Damage 8: Body: Body - Damage by hail - repair according to calculation



Damage 8: Body: Body - Damage by hail - repair according to calculation



Damage 8: Body: Body - Damage by hail - repair according to calculation



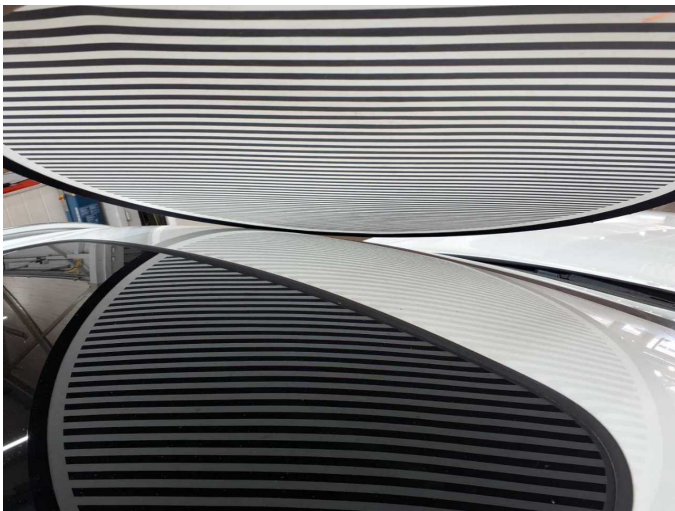
Damage 8: Body: Body - Damage by hail - repair according to calculation



Damage 8: Body: Body - Damage by hail - repair according to calculation



Damage 8: Body: Body - Damage by hail - repair according to calculation



Damage 8: Body: Body - Damage by hail - repair according to calculation



Damage 8: Body: Body - Damage by hail - repair according to calculation



Wartungshistorie

(gemäß Auftraggeber Informationen)

Fahrgestellnummer: LYVUZH1V7PB303581

Hersteller / Modell: VOLVO VOLVO XC60 T6 AWD Recharge Plus Bright

Datum	KM-Stand	Beschreibung
31.10.2025	72.832	Bremsflüssigkeit; Bremsflüssigkeit ern; Luftfiltereinsatz ern; Motoröl b. Wartung; Ölfilter ern; Regelwartungsdienst; Reparatur Sonstiges; Wartung Sonstiges; Zündkerzen ern
18.11.2024	51.847	Motoröl b. Wartung; Ölfilter ern; Regelwartungsdienst; Reparatur Sonstiges; Wartung Sonstiges
15.12.2023	22.607	Motoröl b. Wartung; Ölfilter ern; Regelwartungsdienst; Wartung Sonstiges