

## Expertise

Protocol number: 45975398  
Order No. / Reference: 26410626  
Inspection date: 15 Jun 2026

Manufacturer: Ford

Model: Transit Connect 210 L2 S&S Trend

VIN: WF0SXXWPGSMC80867



### Vehicle details

#### Manufacturer / Type / Model / Equipment

Ford Transit Connect 210 L2 S&S Trend

**Vehicle Identification number** WF0SXXWPGSMC80867

**Mileage (Read)** 140,033 km

**First registration** 23 Nov 2021

**Number of holders** 1

**Next periodical technical inspection** 11/2027  
(Report on hand)

**Power / Engine displacement** 73 kw / 1,499 ccm

**Fuel type / Cylinder** Diesel / 4

**Gearbox / Number of gears** Manual / 6

**Type of drive** Front drive

**Type of vehicle** Van

**Colour / colour code** Obsidian-Scharz Metallic

**Doors / Seats** 4 / 3

**Upholstery type** Cloth

**Colour of upholstery** Black



## Vehicle details

<b>Maintenance booklet / proof</b>	Available / complete	<b>Next maintenance in</b>	31 %
<b>Last service on / at</b>	08/2025 at 119,183 km		
<b>Key is / should be</b>	2 / 2	<b>FZG documents</b>	ZB#2 (B) was available (copy), ZB#1 (S) was not available.
		<b>Letter No.</b>	GH374832
<b>Previous damage / Accident</b>	None detectable	<b>Repainting</b>	None detectable
<b>Inspection conditions</b>	sufficient	<b>Lifting equipment / pit</b>	No
<b>Test drive</b>	Not performed	<b>Engine function test</b>	Performed
<b>Manufacturer key number/ type code number</b>	8566 / BUU 00725		
<b>Emission standard</b>	EURO6;WLTP;AQ;PI/CI; N1 II	<b>fine dust sticker</b>	
<b>Permitted total weight</b>	2,290 kg	<b>Empty weight</b>	

## Tyres

### Mounted tyres

#	Tyre size	Type of tyre	Manufacturer	Tread depth
1)	205/60 R16 96H	Winter tyres on Light alloy	Pirelli	5mm / 5mm
2)	205/60 R16 96H	Winter tyres on Light alloy	Pirelli	5mm / 5mm

### Additional tyres

#	Tyre size	Type of tyre	Manufacturer	Tread depth
1)	205/60 R16 96H	Summer tyres on Steel rim with wheel cover	Continental	5mm / 5mm
2)	205/60 R16 96H	Summer tyres on Steel rim with wheel cover	Continental	6mm / 6mm

**Legend: Tread depth information for the left tire is listed first, for the right tire it is listed second on the axle in the direction of travel.**



## Equipment

### Standard equipment

- ABS with EBD
- Exterior mirrors, electrically adjustable and heated
- Battery, reinforced
- Rubberized flooring, front
- Diesel particulate filter (DPF)
- Tachometer
- Electronic Safety and Stability Program (ESP)
- Ford Easy Fuel
- Heated windshield
- Transmission: 6-speed transmission
- Glove compartment with lid
- Front air conditioning including semi-electronic recirculation system
- Cargo area lining, side, half-height
- Alternator/Generator
- Fog light
- Radio: Ford Audio System 2
- Wheels: Steel wheels 6.5 J x 16 with 205/60 R 16 tires and wheel trims
- Electro-mechanical power steering
- Front seat belts are height-adjustable
- Seats: Seat package 4
- Start-stop system
- Concealed storage compartment on dashboard
- Power outlet: 12-volt connection in storage compartment on dashboard (driver's side)
- Daytime running light
- Child safety lock on sliding doors
- Electronic immobilizer (EPATS)
- Central locking with remote control

### Extra equipment

- Exterior mirrors with large mirror format
- Cruise control system (with adjustable speed limiter including multifunction leather steering wheel with 4 spokes in aluminium decor)
- Tire pressure monitoring system
- Seats: Seat Package 30 (fabric "Capitol/City" in Ebony (black) - Double passenger seat, variably foldable and collapsible (with storage compartment under the smaller seat section) - Driver's seat, 3-way manually adjustable (forward/backward, height, backrest) - Headrests, height-adjustable - Seat heating for driver's seat - Lumbar support, manual (driver's seat) - Seat belt warning system for driver)
- Power outlet: 12-volt connection in the charging/luggage compartment
- AUXILIARY HEATER, ELECTRIC

- Driver's side airbag
- Exterior mirrors, narrow mirror format
- Hill start assist
- On-board computer including outside temperature display
- Double-leaf rear doors without windows
- Third brake light
- Front electric windows
- FordPass Connect
- Warranty: 2-year Ford new car warranty including Ford Assistance mobility guarantee
- Front interior lighting with delay function
- Paint finish: Solid
- Cargo area floor protection plastic, molded
- Steering column, adjustable in height and reach
- Center console, front
- Emergency brake light
- Wheels: Tire repair kit
- Sliding door at rear, right
- Side protection strips, plastic
- Safety brake assist
- Automatic door locking mechanism (45 sec.)
- Front spoiler lip
- Dust and pollen filter
- Power outlet: 12-volt connection on the front center console
- Front bumper and rear bumper end caps painted in body color
- Partition wall to the cargo area without window
- Lashing eyes
- Heat-insulating glazing, lightly tinted
- Auxiliary electric heater (PTC), front

- Remote control: 2nd remote control key for central locking (instead of conventional key)
- Rear parking pilot system
- Radio: Ford Audio System 9 (Ford navigation system incl. Ford SYNC 3 with AppLink, 6" touchscreen radio (FM/AM), 2 USB ports, audio remote control on the steering wheel, Bluetooth hands-free system and audio streaming, emergency call assistant, SMS text-to-speech function, SMS sending function, voice control, reversing camera, phase diversity antenna, DAB/DAB+, acoustic and visual route guidance, road map for Europe, TMCpro live traffic, detailed 3D visualization, Michelin travel guide for Europe)
- Sortimo conversion in the cargo area
- Partition wall to the cargo area with pass-through opening, no window



## Brief expert findings

Documents submitted	At the time of the inspection, the vehicle registration certificate Part 2 (title) was available, but the vehicle registration certificate Part 1 (document) was not. (Copy)
VIN comparison	The vehicle identification number (VIN) was read from the vehicle and its conformity with the submitted documents was confirmed by the undersigned during the inspection.
Inspection	The inspection conditions were sufficient for the assessment of the vehicle. No lifting equipment or pit was available for inspecting the vehicle. Therefore, inspection of the vehicle's underside was only possible to a limited extent.
Test drive	No test drive/shunting maneuver was carried out during the inspection of the vehicle.
Engine function test	An engine test run was performed.

## Value reducing factors

No.	Component group	Description
1	2nd wheel set	1 wheel cover - Scratch(es) - Replace
2	2nd wheel set	1 wheel cover - Scratch(es) - Replace
3	Boot lid / rear door	Rear door - right side - dent(s) - Smooth repair work
4	Mudguard - left side	Mudguard - left side - Scratch(es) - Smart repair
5	Rear bumper	Rear bumper - Damaged - Replace

## Wear and tear

No.	Component group	Description
1	Front bumper	Front bumper - Stone chips - No deduction
2	Bonnet	Bonnet - Stone chips - No deduction
3	Interior	Interior - Scratch(es) - No deduction

The vehicle shows signs of wear and tear commensurate with its age and use.

## Order/Scope of Order

An order was placed to prepare a sales report for the described vehicle. This report includes the following:

- Description of key vehicle information
- Documentation of equipment features  
(*Delivery by third-party service providers*)
- Documentation of damage, defects, missing parts
- Documentation of prior damage, unrepaired prior damage, repainting
- A brief visual or functional inspection of the equipment details, if possible.  
(*Functional testing of driver assistance systems is not included in the scope of services!*)
- a photographic documentation of the vehicle



## Basis for the order

This product is based on the guidelines for vehicle returns and valuations of light commercial vehicles published by Alphabet Fleet Management GmbH. The expert makes the specific findings in each individual case objectively, within the framework of the prescribed standards, based on their own expertise.

The vehicle inspection takes place in a fully assembled, unassembled state.

Damage or defects that can only be detected during disassembly/diagnostic work or through further investigation remain within the realm of prognostic risk. An increased risk exists due to concealed defects caused by fraudulent misrepresentation and which were not identifiable by the expert.

Damage or defects resulting from normal use or wear and tear of the vehicle will be accepted in accordance with the applicable standard.

There was no explicit identification or monetary consideration of the expected features within the product.

Features which, in their nature and extent, slightly exceed normal use but do not constitute unacceptable damage, will be documented and indicated as signs of wear, if applicable.

Damage or defects that, according to the applicable standard, can no longer be attributed to normal use or wear and tear are listed under "Value Reducing Factors" in the product description.

Depending on the product specification, a monetary ID can be provided. If this takes place, the costs can be 100% d or pro rata depending on the vehicle's age and mileage.

## Previous damages

No apparent prior damage that had been repaired could be found on the vehicle.

## Comments

- Die Unterbodenbesichtigung war nur ebenerdig und eingeschränkt möglich.
- Mehrkosten möglich .



Figure 1: Diagonal front (left)



Figure 2: Diagonal front (right)



Figure 3: Diagonal rear (left)



Figure 4: Diagonal rear (right)

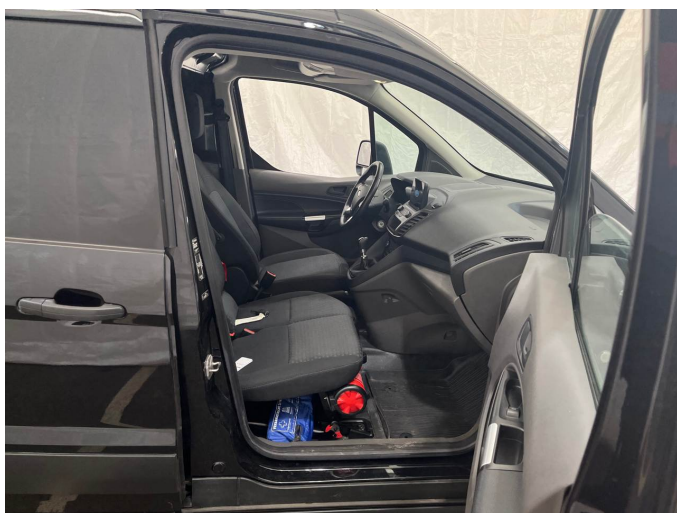


Figure 5: Interior - front



Figure 6: Interior - rear



Figure 7: Instrument cluster



Figure 8: Instrument panel



Figure 9: Interior 360° view



Figure 10: Cargo area



Figure 11: VIN



Figure 12: Mounted tyres



Figure 13: Documents

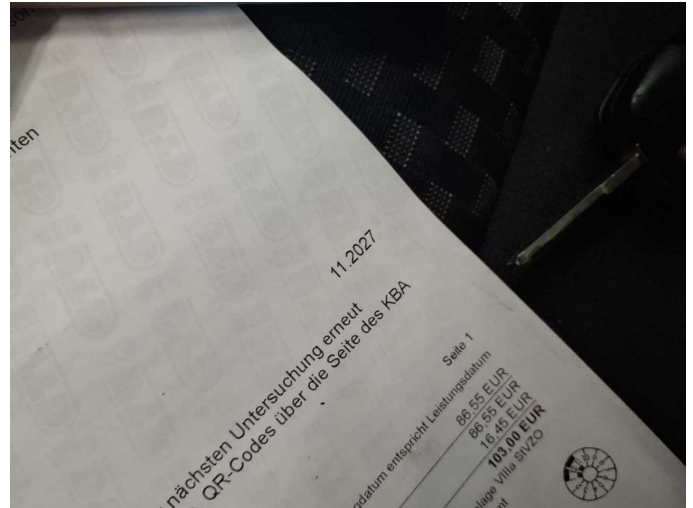


Figure 14: Documents

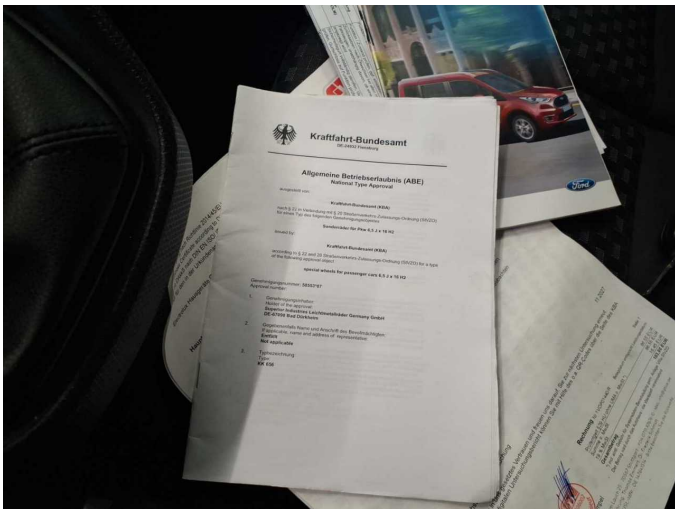


Figure 15: Documents

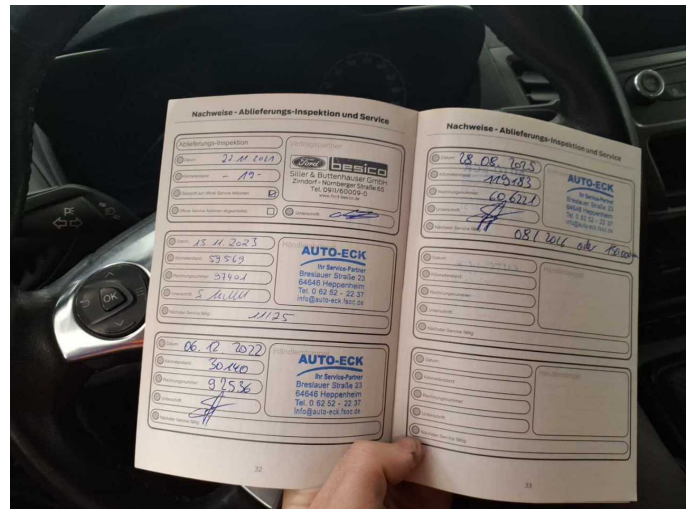


Figure 16: Documents

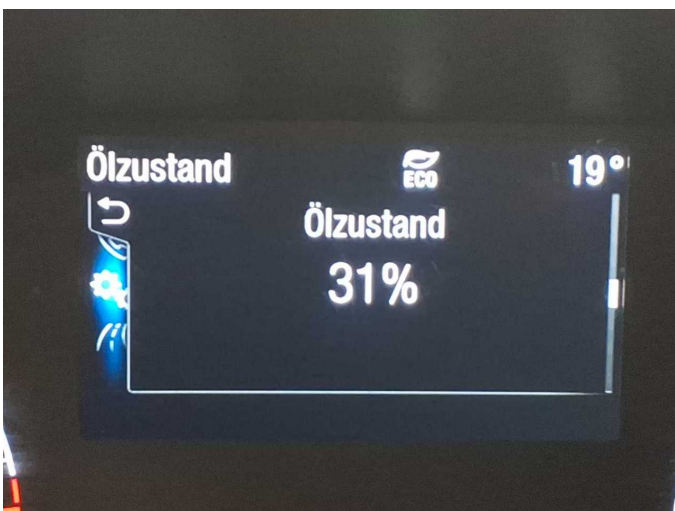


Figure 17: Documents



Figure 18: Documents



Figure 19: Additional tyres

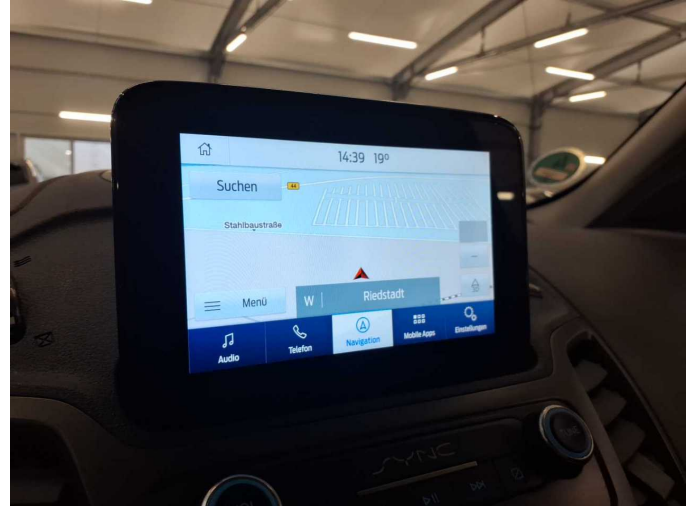


Figure 20: Navigation



Figure 21: Misc.



Figure 22: Misc.



Figure 23: Misc.



Figure 24: Misc.



Figure 25: Misc.



Figure 26: Misc.



Figure 27: Misc.



Figure 28: Misc.



Figure 29: Misc.



Figure 30: Misc.



Figure 31: Misc.



Figure 32: Misc.

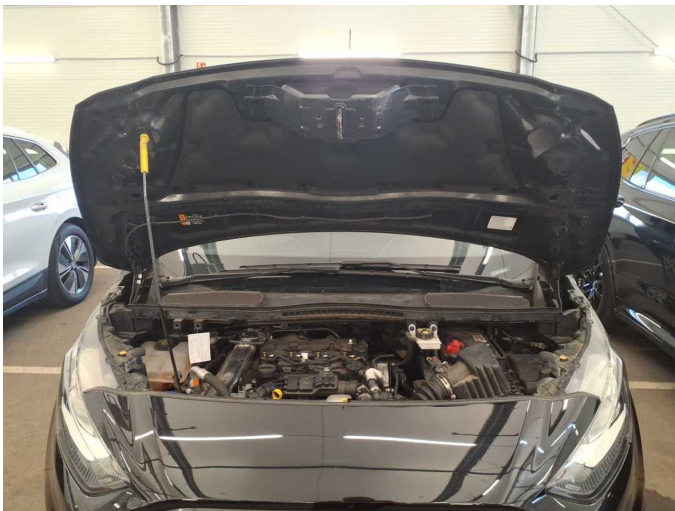


Figure 33: Misc.



Figure 34: Misc.

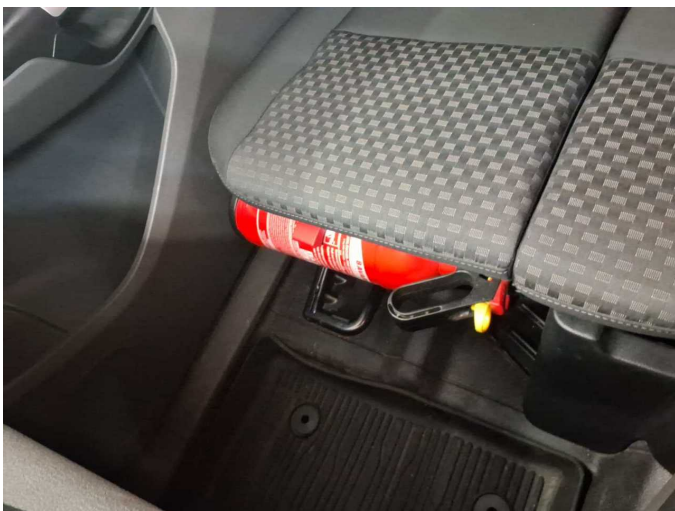


Figure 35: Misc.



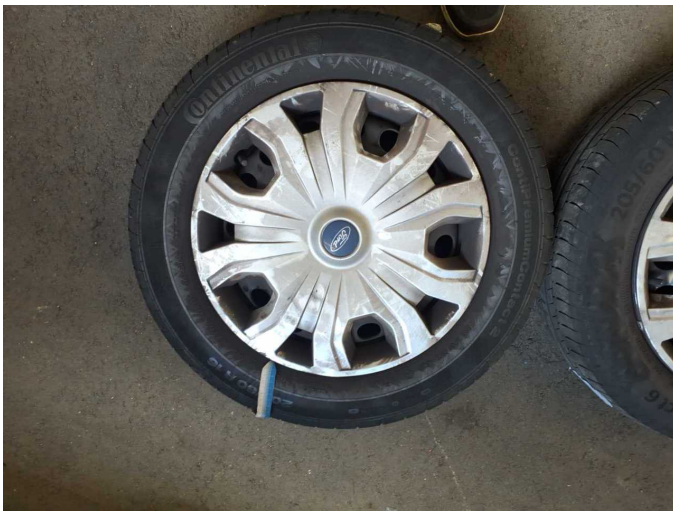
Damage 1: 2nd wheel set: 1 wheel cover - Scratch(es) - Replace



**Damage 1:** 2nd wheel set: 1 wheel cover - Scratch(es) - Replace



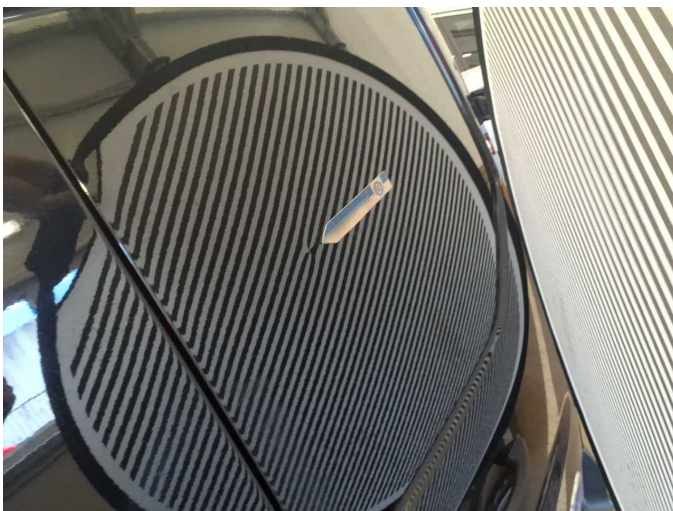
**Damage 2:** 2nd wheel set: 1 wheel cover - Scratch(es) - Replace



**Damage 2:** 2nd wheel set: 1 wheel cover - Scratch(es) - Replace



**Damage 3:** Boot lid / rear door: Rear door - right side - dent(s) - Smooth repair work



**Damage 3:** Boot lid / rear door: Rear door - right side - dent(s) - Smooth repair work



**Damage 4:** Mudguard - left side: Mudguard - left side - Scratch(es) - Smart repair



**Damage 4:** Mudguard - left side: Mudguard - left side - Scratch(es) - Smart repair



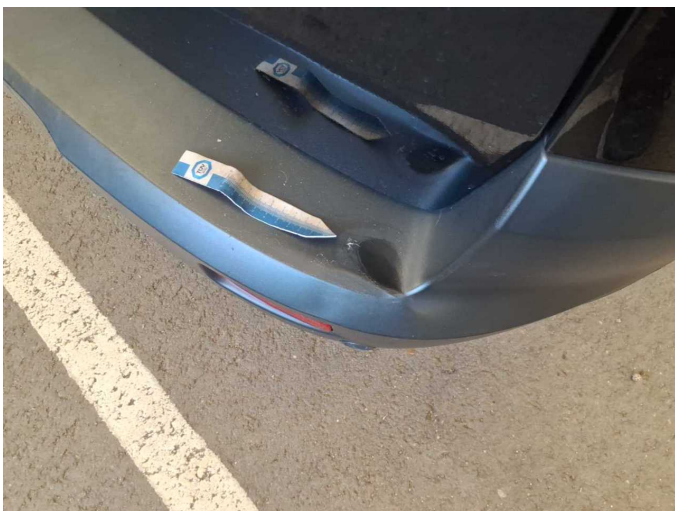
**Damage 5:** Rear bumper: Rear bumper - Damaged - Replace



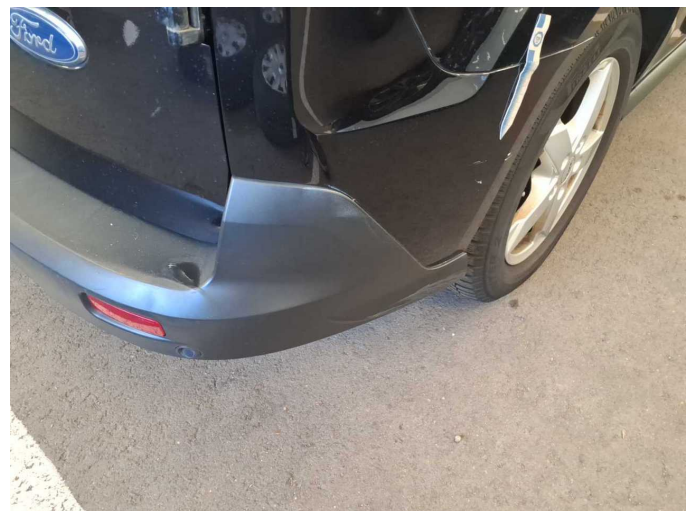
**Damage 5:** Rear bumper: Rear bumper - Damaged - Replace



**Damage 5:** Rear bumper: Rear bumper - Damaged - Replace



**Damage 5:** Rear bumper: Rear bumper - Damaged - Replace



**Damage 5:** Rear bumper: Rear bumper - Damaged - Replace



**Damage 5:** Rear bumper: Rear bumper - Damaged - Replace



# Wartungshistorie

(gemäß Auftraggeber Informationen)

Fahrgestellnummer: WF0SXXWPGSMC80867  
Hersteller / Modell: FORD FORD Transit Connect 210 L2 S&S Trend

Datum	KM-Stand	Beschreibung
27.11.2025	128.251	AU
28.08.2025	119.183	Kraftstofffilter ern; Luftfiltereinsatz ern; Motoröl b. Wartung; Ölfilter ern; Regelwartungsdienst; Wartung Sonstiges
26.09.2024	89.388	Motoröl b. Wartung; Ölwechsel; Regelwartungsdienst; Wartung Sonstiges
20.06.2024	81.147	Bremse Sonstiges; Bremsklötze hinten; Bremsklötze vorne; Bremsscheiben + Klötze h; Bremsscheiben + Klötze v; Bremsscheiben hinten; Bremsscheiben vorne
14.11.2023	59.569	AU; Bremsflüssigkeit ern; Kraftstofffilter ern; Luftfiltereinsatz ern; Motoröl b. Wartung; Regelwartungsdienst
06.12.2022	30.140	Motoröl b. Wartung; Regelwartungsdienst