

## Expertise

Protocol number: 46356257  
Order No. / Reference: 26662910  
Inspection date: 6 Jul 2026

Manufacturer: Mercedes-Benz

Model: GLC 220 d 4Matic 9G-TRONIC AMG Line Advanced

VIN: W1NKM0FB9RF117603



### Vehicle details

#### Manufacturer / Type / Model / Equipment

Mercedes-Benz GLC 220 d 4Matic 9G-TRONIC AMG Line Advanced

**Vehicle Identification number** W1NKM0FB9RF117603

**Mileage (Read)** 79,835 km

**First registration** 6 Dec 2023

**Number of holders** 1

**Next periodical technical inspection** 12/2026

(Report not on hand)

**Power / Engine displacement** 145 kw / 1,993 ccm

**Fuel type / Cylinder** Hybrid Diesel / E / 4

**Gearbox / Number of gears** Automatic / 9

**Type of drive** All-wheel drive

**Type of vehicle** SUV

**Colour / colour code** Schwarz

**Doors / Seats** 5 / 5

**Upholstery type** Alcantara / Leather

**Colour of upholstery** Anthracite-Black

**Re-import** no

**readiness to drive** Roadworthy



Vehicle details			
<b>Maintenance booklet / proof</b>	digital proof / complete	<b>Next maintenance in</b>	119 Tag(e)
<b>Last service on / at</b>	10/2025 at 61,399 km		
<b>Key is / should be</b>	2 / 2	<b>FZG documents</b>	ZB#2 (B) was available (copy), ZB#1 (S) was not available.
		<b>Letter No.</b>	GY555316
<b>Previous damage / Accident</b>	None detectable	<b>Repainting</b>	None detectable
<b>Inspection conditions</b>	sufficient	<b>Lifting equipment / pit</b>	yes
<b>Test drive</b>	Not performed	<b>Engine function test</b>	Performed
<b>readiness to drive</b>	Roadworthy		
<b>Manufacturer key number/ type code number</b>	2222 / BJX 00131		
<b>Emission standard</b>	EURO6;WLTP;AP;PI/CI; M, N1 I	<b>fine dust sticker</b>	
<b>Permitted total weight</b>	2,550 kg	<b>Empty weight</b>	

## Tyres

Mounted tyres				
#	Tyre size	Type of tyre	Manufacturer	Tread depth
1)	235/55 R19 105W	Summer tyres on Light alloy	Continental	4mm / 4mm
2)	255/50 R19 107W	Summer tyres on Light alloy	Continental	5mm / 5mm
Replacement				
Typ	Tyre size	Type of tyre	Manufacturer	Tread depth
	Tirefit	Expiration date 01/2029		

**Legend: Tread depth information for the left tire is listed first, for the right tire it is listed second on the axle in the direction of travel.**

TÜV SÜD Auto Partner GmbH  
Wiesenring 2  
04159 Leipzig

Inspection location  
Hartmann Fleet Professionals GmbH  
Leerenstraße 25  
29683 Bad Fallingbommel



## Equipment



## Standard equipment

- Adaptive Highbeam Assist (automatic switching of the high beams on and off - camera on the inside of the windshield - detects oncoming and preceding illuminated vehicles - activated by pressing the steering wheel control lever to the high beam position)
- Active Brake Assist
- 4MATIC all-wheel drive
- AMG front apron with sporty air intakes and chrome trim element (AMG rear apron in diffuser look with black insert and AMG side sill panels - exhaust system with two visible tailpipe trims integrated into the bumper)
- AMG Line Exterior (AMG Styling, consisting of AMG front apron with sporty air intakes and chrome trim element, AMG rear apron in diffuser look with black insert, AMG side sill panels, wheel arch panels in body color, exhaust system with two visible tailpipe trims integrated into the bumper and sporty engine sound, trim on the B-pillars in high-gloss black, bar between the taillights in high-gloss black)
- ATTENTION ASSIST (can detect typical signs of fatigue via steering behavior and can warn the driver of impending microsleep)
- Brake system with larger brake discs on the front axle (drilled front brake discs and front brake calipers with Mercedes-Benz lettering).
- Double cup holder
- Tachometer
- EASY-PACK tailgate (electrically opening and closing tailgate - switch for electrically opening the tailgate in the driver's door - button for electrically opening the tailgate in the vehicle key - switch for electrically closing the tailgate on the lower edge of the tailgate)
- Chassis: Sport chassis
- Fingerprint scanner (color-illuminated fingerprint scanner in the control bar below the central display - two fingerprints can be stored per user - faster access replaces PIN entry - protects personal data such as profiles as well as office and payment functions)
- Instrument panel and door sills in ARTICO man-made leather in black nappa look
- Communication module (LTE) for using Mercedes me connect services (The communication module with a vehicle-integrated, LTE-enabled SIM card offers you added comfort and safety. It continuously connects you to your vehicle – and the vehicle to the infrastructure such as the Mercedes-Benz server or the internet. This allows you to use services such as Live Traffic Information from Mercedes me connect.)
- Radiator grille with Mercedes-Benz pattern and integrated Mercedes star (as well as louvre in dark grey matt with chrome insert and black frame)
- Airbag for driver and front passenger
- Airbag: Kneebag for driver
- Airbag: Sidebag for driver and front passenger (combined thorax/pelvisbag)
- Airbag: Windowbag
- Active Lane Keeping Assist
- Ambient lighting (Three dimming zones (total, ambient and accent) - Variable brightness setting - 64 colors - Ten color moods - Integrated into the ENERGIZING comfort control programs)
- AMG floor mats
- AMG Line interior (roof control unit in high-gloss black, air vents with elements in silver chrome, doors with trim elements in high-gloss black and surround in silver chrome, and switches in silver chrome)
- AMG sports pedal assembly made of brushed stainless steel with black rubber studs
- Anti-lock braking system (ABS)
- Traction control (ASR)
- Automatic passenger airbag deactivation
- Basic services (accident and breakdown management, maintenance management, telediagnosics, remote vehicle diagnostics)
- Roof rails made of glossy anodized aluminum
- Diesel particulate filter
- Downhill Speed Regulation (DSR) (Speed setting between 2 and 18 km/h via the cruise control - switch for turning it on and off in the center console - display in the multimedia display)
- EASY-Pack: Cargo area cover
- Electronic Stability Program (ESP)
- Driver display (31.2 cm (12.3") color LCD display with a resolution of 2400 x 900 pixels - 7 different contexts with specific content - 3 different display styles)
- Transmission: 9G-TRONIC
- Rear window heated
- Rear window wiper/washer system
- Interior headliner fabric crystal grey
- Climate: THERMATIC automatic climate control (2-zone automatic climate control - control of climate settings - depending on equipment - sensor system for detecting, for example, indoor/outdoor temperature, solar radiation, humidity and dew point - automatic recirculation - ventilation system: 3 center vents in the center area and 2 side vents (each swiveling and adjustable), 2 air vents each in the footwell for driver and front passenger - fine dust activated carbon filter for filtering dust, soot and pollen - dew point sensor)
- Paint finish: Solid
- LED High Performance headlights (torch and trifunctional light guide for daytime running lights, position lights and turn signals - multi-chamber reflector system with 4 individual reflectors each) for low beam and high beam. The rear light elements in LED technology: - All light functions in full LED technology - tail light - brake light and parking light - rear fog light (left side only) - turn signals in the white light strip - reversing light in the white light strip - 3rd brake light



- Steering wheel: Multifunction sports steering wheel in Nappa leather (sporty steering wheel in 3-spoke design - finished in Nappa leather, deeply embossed in the grip area - horizontal double spokes in high-gloss black, vertical double spokes in silver chrome - black grained shift paddles - control via touch panels: left: driver display, cruise control and speed limiter or Active Distance Assist DISTRONIC; right: MBUX multimedia system (e.g. audio volume and track selection, telephony and navigation); touch sensitivity adjustable via central display)
- Navigation accessories: Extended MBUX functions (personalization (profiles) and predictive functions - MBUX voice assistant with natural language understanding - activation via "Hey Mercedes" - learning function of the MBUX voice assistant through connection with a cloud-based online dictionary, Mercedes me connect service free of charge for 3 years from activation - Wi-Fi hotspot - internet radio)
- Navigation: Hard drive navigation (Mercedes-Benz look and feel of the navigation system, all map data stored on the hard drive - fast hard drive navigation - destination input via touch function or voice control - route calculation including waypoints - numerous route options and avoidance options - 3D image of the upcoming driving maneuver and lane recommendation - easy switching between 2D and 3D views - route recording function - in-car office function)
- Package: AMG Line Advanced (00U Remote Services - 70B Warning vest for driver - P29 AMG Line Interior - P31 AMG Line Exterior - PBG MBUX Navigation Premium - PDA Advanced Package - U29 Brake system with larger brake discs on the front axle)
- Package: Boot Comfort Package (electrically foldable rear seat backrests via switches on the right and left in the control panel in the cargo area - 12V socket on the left in the control panel in the cargo area - tension strap on the right side wall - reversible mat with a rubberized, non-slip side and a soft velour side)
- Package: Seating Comfort (various electric and manual adjustment options for the front seats to adapt to the specific body and comfort requirements of the driver and front passenger - electropneumatic 4-way lumbar support and lateral support adjustment with control element on the seat - electric seat cushion tilt adjustment - electric height adjustment - electric backrest adjustment - electric seat cushion depth adjustment by 6 cm with leg rest pad - mechanical longitudinal adjustment - mechanical headrest adjustment)
- Package: USB package (2 USB-C ports under the front center armrest, suitable for data transfer)
- Radio accessories: MBUX multimedia system
- Remote Services (Communication module - Mercedes me services: Programming of auxiliary heating/ventilation, remote door locking and unlocking, sunroof/windows with remote locking and opening including ventilation function, personalization of vehicle location, vehicle tracking, geographic vehicle monitoring, parking service monitoring, finder function (Remote Vehicle Finder))
- Seats: 4-way lumbar support for driver and front passenger
- Sporty engine sound
- Steering: Sport direct steering
- Mercedes-Benz emergency call system
- Center console in high-gloss black
- Navigation accessories: Pre-installation for Live Traffic Information (Live Traffic Information receives more precise and up-to-date traffic data in real time than conventional systems and optimizes dynamic route guidance. Whether during rush hour or while traveling: You can react to many situations and easily bypass traffic jams and stop-and-go traffic.)
- Navigation accessories: Pre-installation for navigation services (display of online content on the navigation map - parking spaces - weather information - local search - digital logbook)
- Navigation: MBUX Navigation Premium (Pre-installation for navigation services - Hard drive navigation - Pre-installation for Live Traffic Information - 3 years of free navigation updates for map data)
- Package: Storage (map pockets on the back of the front seats - folding box - cargo bar, which allows the backrest of the rear seats to be raised by 10°)
- Package: Chrome Interior Package
- Package: Interior lighting (More light, more atmosphere, better orientation: The interior lighting package provides more comprehensive direct and indirect lighting. The additional light elements create a pleasant atmosphere and make operation easier.)
- Package: Parking package with reversing camera (12 ultrasonic sensors: 6 each in the front and rear bumpers - reversing camera: integrated into the trunk lid, display in the media display, trailer mode - Active Parking Assist PARKTRONIC: detects parking spaces, assisted parking, assisted exiting, visual and acoustic warning of detected obstacles, display of camera and ultrasonic data in the central display, button for Active Parking Assist with PARKTRONIC - cross traffic warning - maneuvering brake - drive-away assist)
- Package: Mirror package (interior and exterior mirrors on the driver's side automatically dimming - exterior mirrors left and right electrically folding - ambient lighting in the exterior mirrors)
- Upholstery: ARTICO leatherette/MICROCUT microfiber
- Radio accessories: Digital radio (DAB)
- Tire pressure loss warning
- Wheels: 48.3 cm (19") AMG light-alloy wheels in 5-spoke design, painted tantalum grey (aerodynamically optimized and high-sheen finish with 235/55 R19 tires on 8.0 J x 19 ET 32.5 rims)
- Wheels: Summer tires
- Wheel accessories: TIREFIT with tire inflator compressor
- Windscreen wipers with rain sensor
- Heated seats for driver and front passenger
- Telephone accessories: Wireless charging system for mobile devices (wireless charging according to Qi standard for compatible mobile phones - fast connection setup between multimedia system and mobile phone via Near Field Communication (NFC) for identification of the mobile device - storage compartment for wireless charging is located in the storage compartment at the front of the center console)
- Cruise control



- Phone accessories: Smartphone integration (Smartphone integration merges your mobile phone with the media system via Apple CarPlay and Android Auto. This gives you convenient access to your smartphone's most important applications. You can also use third-party apps like Spotify quickly and easily. Features include: app display, access to current software and data (e.g., for navigation, traffic information, contacts, messaging, telephony, media), and voice control of smartphone functions.)
- High-visibility vest for drivers
- Immobiliser
- Heat-insulating dark tinted glass
- Central display (touchscreen with LCD technology - 30.2 cm (11.9") screen diagonal - resolution of 1,624 x 1,728 pixels (width x height) - tilted 6° - 7° towards the driver)
- Central locking with remote control

### Extra equipment

- Active Distance Assist DISTRONIC (radar sensor in the radiator grille - automatically acting assistance system - active up to a speed of 160 km/h - visual and acoustic warning if you as the driver need to intervene - depending on the driving program, the vehicle accelerates faster or slower to the desired speed - detected speed limits can be conveniently adopted by pressing a button on the steering wheel (only in conjunction with Traffic Sign Assist or Speed Limit Assist))
- Center console metal structure
- Package: AMG Line Advanced Plus (electrically adjustable driver's seat with memory function - Blind Spot Assist - Illuminated door sills with "Mercedes-Benz" lettering - Traffic Sign Assist - Ambient Lighting Plus)
- Radio accessories: Burmester 3D surround sound system (15 powerful speakers - DSP amplifier with a total output of 710 W (2 x 120 watts, 7 x 50 watts, 6 x 20 watts) - 2 broadband speakers in the front for 3D sound - Frontbass technology with woofers integrated into the body shell - Sound optimization for the front, rear or all seats - 2 sound presets: "Pure" and "3D Sound" - Equalizer function for adjusting bass, midrange and treble - Noise cancellation (VNC))
- Cargo net (This feature protects you from loose items in the luggage compartment. The cargo net is very easy to use. You can attach or remove it in just a few steps.)
- Decorative elements, wood, linden, line structure, anthracite, open-pore

- Pre-installation for digital key handover (Share your vehicle with friends and family members more easily than ever before – no matter where you are. You retain full control and decide conveniently via app whether you consent to its use. You can also unlock your vehicle remotely via the mobile application. Only then will a stored key be activated. Service is free of charge for 3 years from activation.)

- Towbar with ESP trailer stabilization
- ENERGIZING AIR CONTROL (Air quality sensor and one fine dust sensor each for indoor and outdoor use - Fine dust filtration with 2 filters, consisting of a fine dust pre-filter and an interior filter - Interior filter in the air conditioner based on activated carbon with filter layers against fine dust (PM2.5) and nitrogen oxides (NOx) or sulfur dioxides (SO2) as well as pollen, allergens and soot particles - Automatic recirculation or fresh air switching depending on the measured air quality - Air quality menu in the MBUX multimedia system)
- Package: Night (Radiator grille with Mercedes-Benz pattern and louvre in high-gloss black - Attractive 48.3 cm (19") AMG 5-spoke light-alloy wheels in high-gloss black and polished finish 235/55 R19 on 8.0 J x 19 ET 32.5 - AMG front apron with visual underguard in high-gloss black - Belt trim strip and window surrounds in high-gloss black - Exterior mirror housings painted in high-gloss black - Roof rails in matte black, rear apron and diffuser in black)
- Sunroof: Panoramic sunroof (large glass module made of heat-insulating safety glass - mesh wind deflector in the front area - electric sunshade with one-touch operation - comprehensive protection concept: anti-pinch protection, automatic rain closing, automatic closing when the recirculation function is activated, PRE-SAFE closing function (only in conjunction with PRE-SAFE system))



## Brief expert findings

Documents submitted	At the time of the inspection, the vehicle registration certificate Part 2 (title) was available, but the vehicle registration certificate Part 1 (document) was not. (Copy)
VIN comparison	The vehicle identification number (VIN) was read from the vehicle and its conformity with the submitted documents was confirmed by the undersigned during the inspection.
Inspection	The inspection conditions were sufficient for the assessment of the vehicle. Lifting equipment and/or a pit were available for examining the vehicle.
Test drive	No test drive/shunting maneuver was carried out during the inspection of the vehicle.
Engine function test	An engine test run was performed.
readiness to drive	The vehicle was roadworthy at the time of inspection.

## Value reducing factors

No.	Component group	Description
1	Wheel / tyres	Alloy rim - rear right side - Scratch(es) - Loss in value
2	Side panel - rear right side	Side panel - dent(s) - Smooth repair work
3	Wheel / tyres	Alloy rim - front right side - Scratch(es) - Loss in value
4	Side panel - rear right side	Wheel well extension - Scratch(es) - Paint
5	Side panel - rear right side	Sill - Dent / paintcoat damage - Smart repair
6	Side panel - rear left side	Sill - Dent / paintcoat damage - Smart repair
7	Side panel - rear left side	Side panel - Scratch(es) - Paint
8	Front bumper	Front bumper (Zusätzlich Spoiler Kratzer) - Scratch(es) - Paint
9	Rear bumper	Rear bumper (Zusätzlich Zierleiste Kratzer) - Dent / paintcoat damage - Repair and paint
10	Boot lid / rear door	Boot lid (Zusätzlich Zierleiste Kratzer) - Scratch(es) - Paint
11	Bonnet	Bonnet (Anätzung) - Paint defect - Repair and paint
12	Door - rear right side	Door - Dent / paintcoat damage - Repair and paint

## Wear and tear

No.	Component group	Description
1	Tail light	Tail lamp - left side - Scratch(es) - No deduction
2	Vehicle glazing	Windscreen - Stone chips - No deduction
3	Mudguard - right side	Mudguard - right side - Stone chips - No deduction
4	Door - front left side	Door edge - Scratch(es) - No deduction
5	Misc.	Inspection / maintenance (2. Wartung überschritten) - does not meet manufacturer specifications - repair/paint (S3)

The vehicle shows signs of wear and tear commensurate with its age and use.

## Order/Scope of Order

An order was placed to prepare a sales report for the described vehicle. This report includes the following:

- Description of key vehicle information
- Documentation of equipment features  
(*Delivery by third-party service providers*)
- Documentation of damage, defects, missing parts
- Documentation of prior damage, unrepaired prior damage, repainting
- A brief visual or functional inspection of the equipment details, if possible.  
(*Functional testing of driver assistance systems is not included in the scope of services!*)
- a photographic documentation of the vehicle



## Basis for the order

This product is based on the guidelines for vehicle returns and valuations published by Alphabet Fleet GmbH. The expert makes the specific findings in each individual case objectively, within the framework of the prescribed standards, based on their own expertise.

The vehicle inspection takes place in a fully assembled, unassembled state.

Damage or defects that can only be detected during disassembly/diagnostic work or through further investigation remain within the realm of prognostic risk. An increased risk exists due to concealed defects caused by fraudulent misrepresentation and which were not identifiable by the expert.

Damage or defects resulting from normal use or wear and tear of the vehicle will be accepted in accordance with the applicable standard.

There was no explicit identification or monetary consideration of the expected features within the product.

Features which, in their nature and extent, slightly exceed normal use but do not constitute unacceptable damage, will be documented and indicated as signs of wear, if applicable.

Damage or defects that, according to the applicable standard, can no longer be attributed to normal use or wear and tear are listed under "Value Reducing Factors" in the product description.

Depending on the product specification, a monetary ID can be provided. If this takes place, the costs can be 100% d or pro rata depending on the vehicle's age and mileage.

## Previous damages

No apparent prior damage that had been repaired could be found on the vehicle.



Figure 1: Diagonal front (left)



Figure 2: Diagonal front (right)



Figure 3: Diagonal rear (left)



Figure 4: Diagonal rear (right)



Figure 5: Interior - front



Figure 6: Interior - rear



Figure 7: Instrument cluster



Figure 8: Instrument panel



Figure 9: Interior 360° view

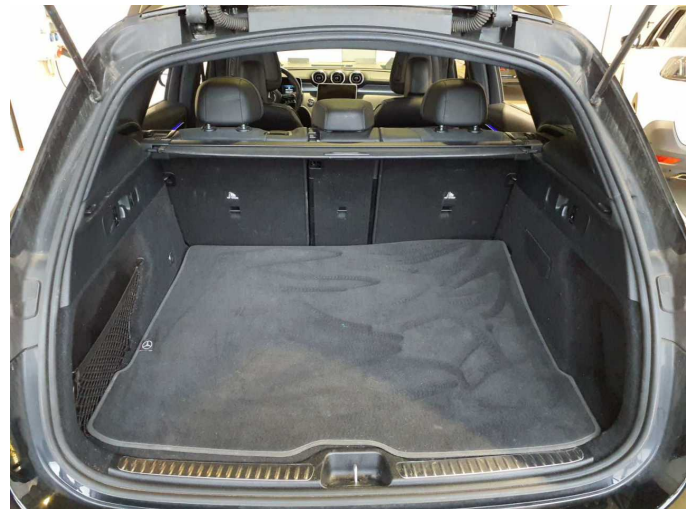


Figure 10: Cargo area

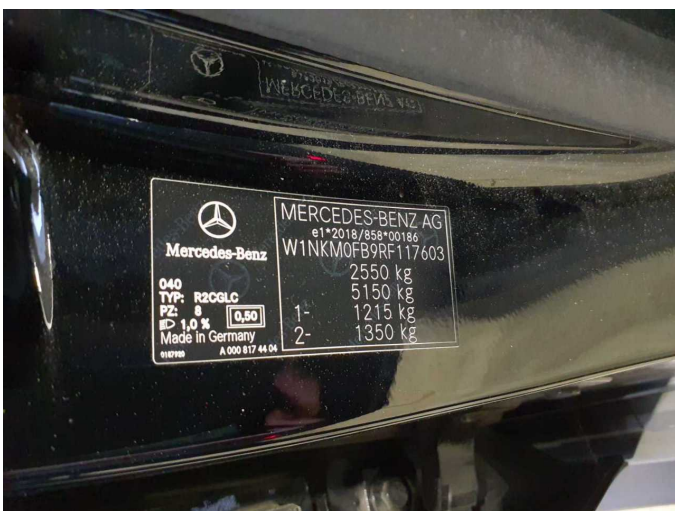


Figure 11: VIN



Figure 12: Mounted tyres



Figure 13: Documents



Figure 14: Navigation



Figure 15: Misc.

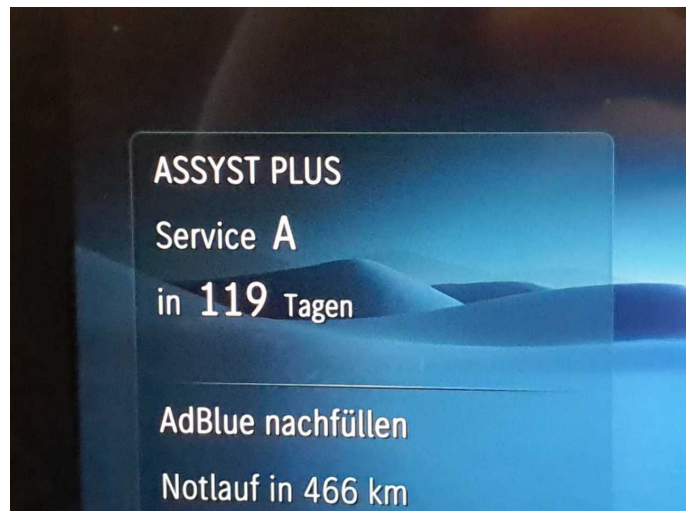


Figure 16: Misc.



Figure 17: Misc.



Figure 18: Misc.



Figure 19: Misc.



Figure 20: Misc.



Figure 21: Misc.



Figure 22: Misc.



Figure 23: Misc.



Figure 24: Misc.



Figure 25: Misc.



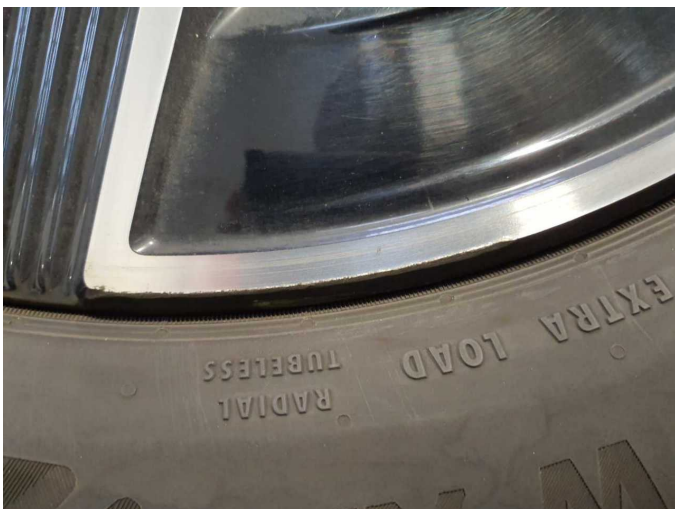
Figure 26: Misc.



Figure 27: Misc.



Damage 1: Wheel / tyres: Alloy rim - rear right side - Scratch(es) - Loss in value



Damage 1: Wheel / tyres: Alloy rim - rear right side - Scratch(es) - Loss in value



Damage 2: Side panel - rear right side: Side panel - dent(s) - Smooth repair work



**Damage 2:** Side panel - rear right side: Side panel - dent(s) - Smooth repair work



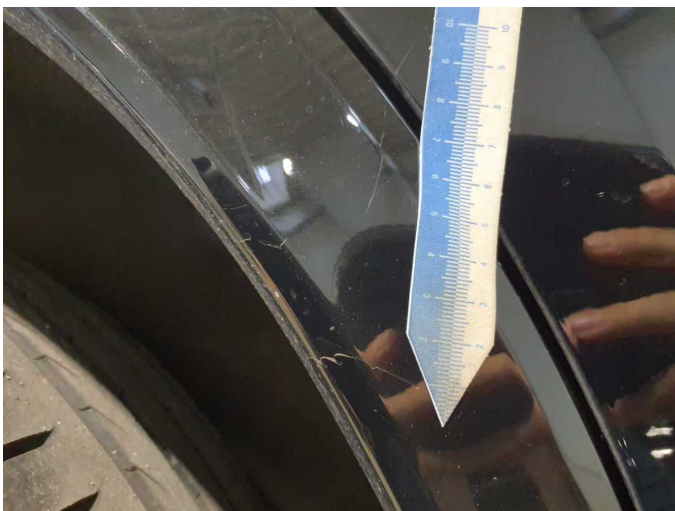
**Damage 3:** Wheel / tyres: Alloy rim - front right side - Scratch(es) - Loss in value



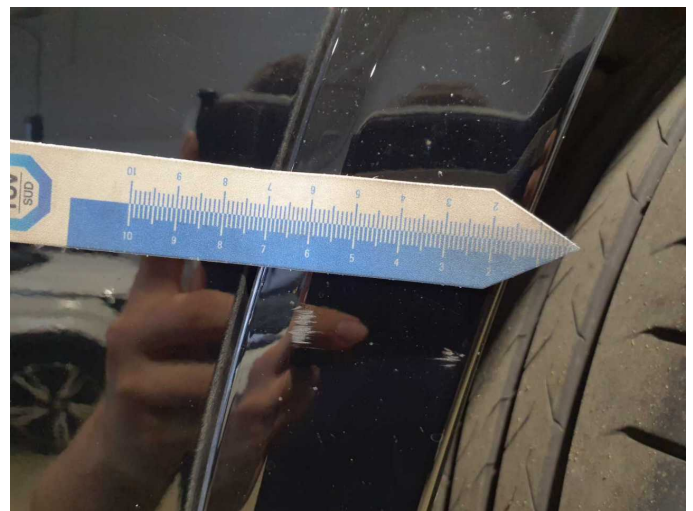
**Damage 3:** Wheel / tyres: Alloy rim - front right side - Scratch(es) - Loss in value



**Damage 4:** Side panel - rear right side: Wheel well extension - Scratch(es) - Paint



**Damage 4:** Side panel - rear right side: Wheel well extension - Scratch(es) - Paint



**Damage 4:** Side panel - rear right side: Wheel well extension - Scratch(es) - Paint



**Damage 5:** Side panel - rear right side: Sill - Dent / paintcoat damage - Smart repair



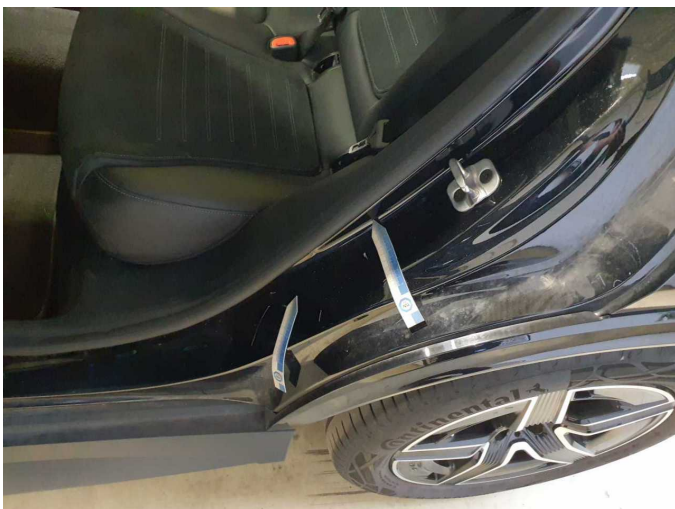
**Damage 5:** Side panel - rear right side: Sill - Dent / paintcoat damage - Smart repair



**Damage 5:** Side panel - rear right side: Sill - Dent / paintcoat damage - Smart repair



**Damage 5:** Side panel - rear right side: Sill - Dent / paintcoat damage - Smart repair



**Damage 6:** Side panel - rear left side: Sill - Dent / paintcoat damage - Smart repair



**Damage 6:** Side panel - rear left side: Sill - Dent / paintcoat damage - Smart repair



**Damage 6:** Side panel - rear left side: Sill - Dent / paintcoat damage - Smart repair



**Damage 6:** Side panel - rear left side: Sill - Dent / paintcoat damage - Smart repair



**Damage 7:** Side panel - rear left side: Side panel - Scratch(es) - Paint



**Damage 7:** Side panel - rear left side: Side panel - Scratch(es) - Paint



**Damage 7:** Side panel - rear left side: Side panel - Scratch(es) - Paint



**Damage 7:** Side panel - rear left side: Side panel - Scratch(es) - Paint



**Damage 8:** Front bumper: Front bumper (Zusätzlich Spoiler Kratzer) - Scratch(es) - Paint



**Damage 8:** Front bumper: Front bumper (Zusätzlich Spoiler Kratzer) - Scratch(es) - Paint



**Damage 8:** Front bumper: Front bumper (Zusätzlich Spoiler Kratzer) - Scratch(es) - Paint



**Damage 8:** Front bumper: Front bumper (Zusätzlich Spoiler Kratzer) - Scratch(es) - Paint



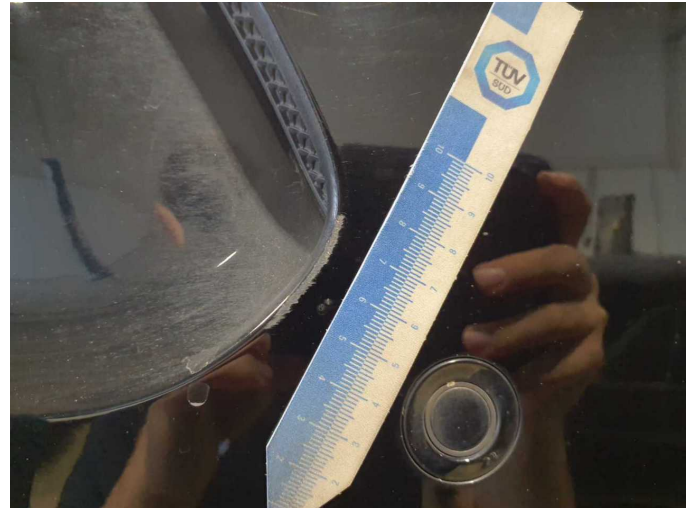
**Damage 8:** Front bumper: Front bumper (Zusätzlich Spoiler Kratzer) - Scratch(es) - Paint



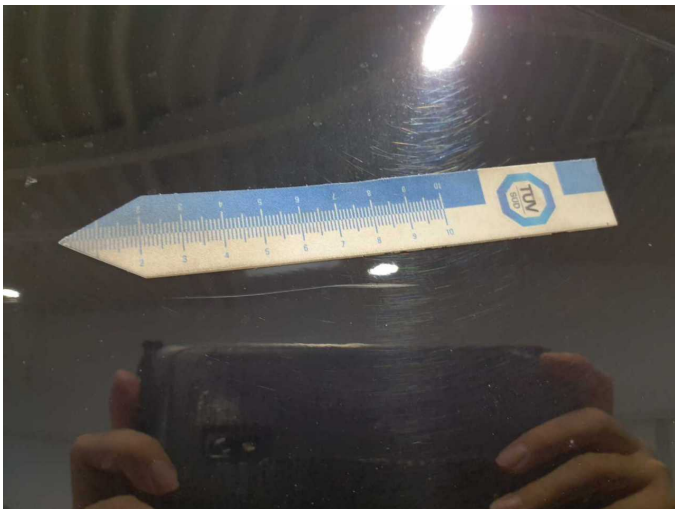
**Damage 8:** Front bumper: Front bumper (Zusätzlich Spoiler Kratzer) - Scratch(es) - Paint



**Damage 9:** Rear bumper: Rear bumper (Zusätzlich Zierleiste Kratzer) - Dent / paintcoat damage - Repair and paint



**Damage 9:** Rear bumper: Rear bumper (Zusätzlich Zierleiste Kratzer) - Dent / paintcoat damage - Repair and paint



**Damage 9:** Rear bumper: Rear bumper (Zusätzlich Zierleiste Kratzer) - Dent / paintcoat damage - Repair and paint



**Damage 9:** Rear bumper: Rear bumper (Zusätzlich Zierleiste Kratzer) - Dent / paintcoat damage - Repair and paint



**Damage 9:** Rear bumper: Rear bumper (Zusätzlich Zierleiste Kratzer) - Dent / paintcoat damage - Repair and paint



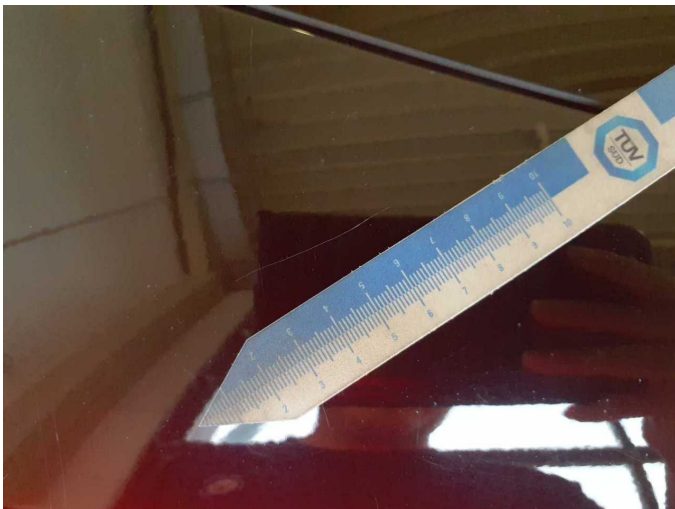
**Damage 9:** Rear bumper: Rear bumper (Zusätzlich Zierleiste Kratzer) - Dent / paintcoat damage - Repair and paint



**Damage 9:** Rear bumper: Rear bumper (Zusätzlich Zierleiste Kratzer) - Dent / paintcoat damage - Repair and paint



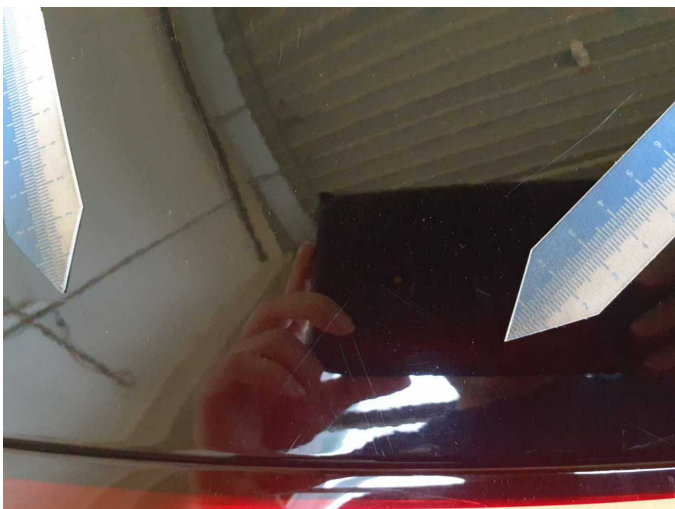
**Damage 10:** Boot lid / rear door: Boot lid (Zusätzlich Zierleiste Kratzer) - Scratch(es) - Paint



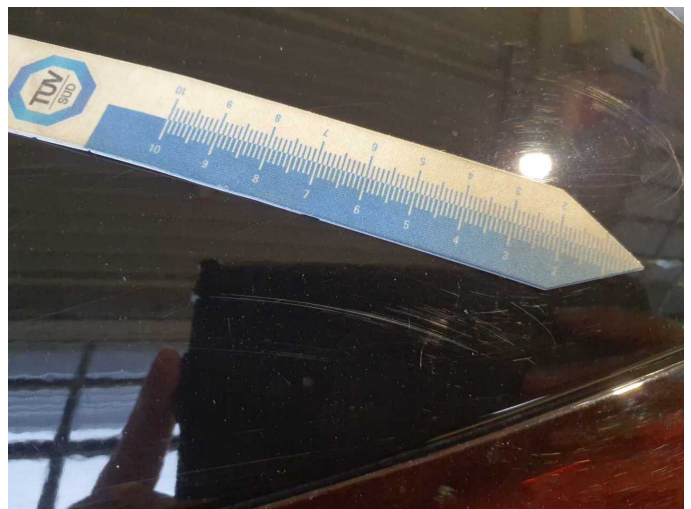
**Damage 10:** Boot lid / rear door: Boot lid (Zusätzlich Zierleiste Kratzer) - Scratch(es) - Paint



**Damage 10:** Boot lid / rear door: Boot lid (Zusätzlich Zierleiste Kratzer) - Scratch(es) - Paint



**Damage 10:** Boot lid / rear door: Boot lid (Zusätzlich Zierleiste Kratzer) - Scratch(es) - Paint



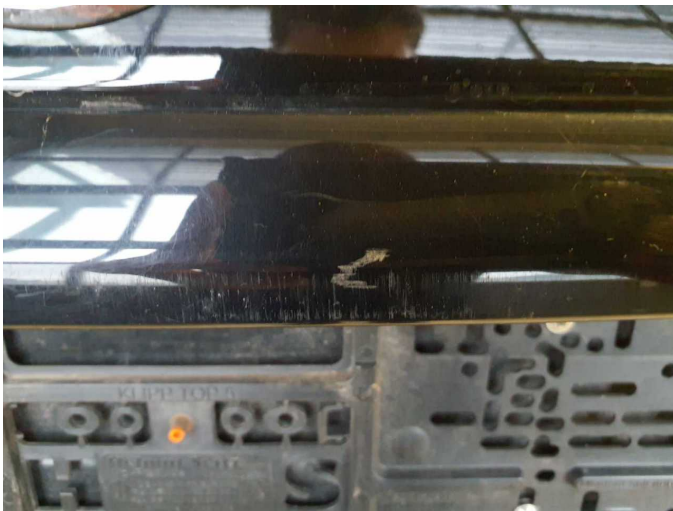
**Damage 10:** Boot lid / rear door: Boot lid (Zusätzlich Zierleiste Kratzer) - Scratch(es) - Paint



**Damage 10:** Boot lid / rear door: Boot lid (Zusätzlich Zierleiste Kratzer) - Scratch(es) - Paint



**Damage 10:** Boot lid / rear door: Boot lid (Zusätzlich Zierleiste Kratzer) - Scratch(es) - Paint



**Damage 10:** Boot lid / rear door: Boot lid (Zusätzlich Zierleiste Kratzer) - Scratch(es) - Paint



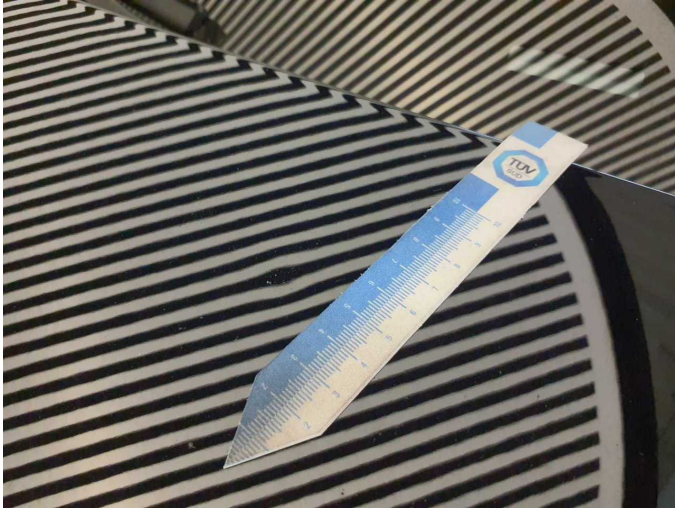
**Damage 11:** Bonnet: Bonnet (Anätzung) - Paint defect - Repair and paint



**Damage 11:** Bonnet: Bonnet (Anätzung) - Paint defect - Repair and paint



**Damage 11:** Bonnet: Bonnet (Anätzung) - Paint defect - Repair and paint



**Damage 11:** Bonnet: Bonnet (Anätzung) - Paint defect - Repair and paint



**Damage 12:** Door - rear right side: Door - Dent / paintcoat damage - Repair and paint



**Damage 12:** Door - rear right side: Door - Dent / paintcoat damage - Repair and paint



**Damage 12:** Door - rear right side: Door - Dent / paintcoat damage - Repair and paint