

## Expertise

Protocol number: 45450162  
Order No. / Reference: 26211961  
Inspection date: 5 May 2026

Manufacturer: Seat

Model: Formentor VZ 1.4 e-Hybrid DSG

VIN: VSSZZZKM7PR038282



### Vehicle details

#### Manufacturer / Type / Model / Equipment

Seat Formentor VZ 1.4 e-Hybrid DSG

**Vehicle Identification number** VSSZZZKM7PR038282

**Mileage (Read)** 55,114 km

**First registration** 8 Dec 2022

**Number of holders** 2

**Power / Engine displacement** 110 kw / 1,395 ccm

**Fuel type / Cylinder** Hybr.B/E ext.auf1 / 4

**Gearbox / Number of gears** Automatic / 6

**Type of drive** Front drive

**Type of vehicle** Saloon car

**Colour / colour code** Graphene Grau

**Doors / Seats** 5 / 5

**Upholstery type** Cloth / leather combination

**Colour of upholstery** Black-Anthracite

**readiness to drive** Roadworthy



## Vehicle details

<b>Maintenance booklet / proof</b>	digital proof / complete	<b>Next maintenance in</b>	5,500 km
<b>Last service on / at</b>	10/2025 at 49,253 km		
<b>Key is / should be</b>	2 / 2	<b>FZG documents</b>	ZB#2 (B) was available (copy), ZB#1 (S) was not available.
		<b>Letter No.</b>	GN387942
<b>Previous damage / Accident</b>	None detectable	<b>Repainting</b>	None detectable
<b>Inspection conditions</b>	sufficient	<b>Lifting equipment / pit</b>	No
<b>Test drive</b>	Not performed	<b>Engine function test</b>	Performed
<b>readiness to drive</b>	Roadworthy		
<b>Manufacturer key number/ type code number</b>	7593 / ARH 00038		
<b>Emission standard</b>	EURO6;WLTP;AP;PI/CI; M, N1 I	<b>fine dust sticker</b>	
<b>Permitted total weight</b>	2,120 kg	<b>Empty weight</b>	

## Tyres

### Mounted tyres

#	Tyre size	Type of tyre	Manufacturer	Tread depth
1)	245/40 R19 98V	Winter tyres on Light alloy	Goodyear	6mm / 6mm
2)	245/40 R19 98V	Winter tyres on Light alloy	Goodyear	7mm / 7mm

### Additional tyres

#	Tyre size	Type of tyre	Manufacturer	Tread depth
1)	245/40 R19 94W	Summer tyres on Light alloy	Bridgestone	3mm / 3mm
2)	245/40 R19 94W	Summer tyres on Light alloy	Bridgestone	5mm / 5mm

### Replacement

Typ	Tyre size	Type of tyre	Manufacturer	Tread depth
	Tirefit	Expiration date 07/2026		

**Legend: Tread depth information for the left tire is listed first, for the right tire it is listed second on the axle in the direction of travel.**



## Equipment

### Standard equipment

- Storage compartment in the doors
- Acoustic pedestrian warning system (AVAS)
- Electrically adjustable, folding and heated exterior mirrors
- Climatronic with 3-zone temperature control
- CUPRA Drive Profile
- Black headliner
- Electronic differential lock (XDS) for front axle
- Three-point automatic seat belts, front and rear
- Electronic parking brake including auto-hold function
- Chassis: Adaptive chassis control DCC
- Remote release for folding down the rear seat backrest in the boot
- Luggage compartment cover
- Speed limiter
- Illuminated glove compartment
- Rear window wiper
- Headrests, 2 front, 3 rear
- Trim strips on the side windows (outside) in Glossy Black
- Steering wheel: Heated steering wheel
- Reading lights front and rear
- Front center armrest
- Navigation: Navigation system 12"
- Otto particulate filter
- Package: Light and Visibility
- Package: Full LED package
- PreCrash Assist
- Radio accessories: 7 speakers
- Radio accessories: CUPRA CONNECT
- Tire pressure monitoring system
- Wheels: Tyre fit
- Side windows from the 2nd row of seats and rear window are dark tinted.
- Seats: CUPRA front sport bucket seats in "Sharp Textil"
- Seats: ISOFIX child seat restraint system, in the 2nd row left and right
- Smart Ambient Light
- Sun visor on driver and passenger side with make-up mirror and lighting
- Illuminated door sill trims, front
- Front Assist area monitoring system with City Emergency Braking function
- Electronic immobilizer
- Airbag: Airbags (7)
- Adaptive Cruise Control (ACC) up to 210 km/h (DSG)
- Third brake light
- Connectivity box in the center console storage compartment including wireless charger
- Roof rails in Glossy Black
- Double-tone signal horn
- Parking aid - ultrasonic, rear
- Electronic Stability Control (ESC)
- Electric window regulator with anti-pinch protection and one-touch function
- High beam assist
- Luggage compartment lighting
- Transmission: 6-speed dual-clutch transmission (DSG)
- Heated rear window
- Kessy Advanced and Keyless GO
- Mode 2 charging cable for household sockets
- Steering wheel: CUPRA sports multifunction steering wheel
- Rear center armrest with pass-through option
- Fatigue detection
- Emergency call service
- Package: Driver Assistance Package L for navigation system
- Parking assist
- Radio: Digital radio reception DAB+
- Radio accessories: Bluetooth interface
- Radio accessories: 2 USB-C ports front / 2 rear (charging function)
- Rear view camera
- Servotronic
- Seats: Passenger seat with height adjustment
- Seats: Driver's seat with height adjustment
- Seats: Lumbar support for driver and front passenger
- Seats: Rear seat backrest asymmetrically split and foldable
- Lane departure warning system
- Power outlets: 12V socket in the front, 230V socket in the trunk
- Lashing eyes in the luggage compartment
- Virtual Cockpit
- Thermal insulation glazing



### Extra equipment

- Electrically operated tailgate (opening & closing including sensor-controlled opening & closing (virtual pedal))
- Mode 3 Type 2 charging cable, 16 A
- Paint finish: Exclusive
- Panoramic glass sliding roof (electric with sunshade blind)
- Radio accessories: Wireless Full Link Connectivity (including Android Auto and Apple CarPlay)
- Swiveling towbar with electric release
- Wheels: "Exclusive I" alloy wheels in black/copper, diamond-turned finish (8J x 19", tires 245/40 R 19)
- Package: Driving Assistance Package XL for navigation system (Side Assist incl. Blind Spot Assist - Exit Assist & Exit warning - Travel Assist - Emergency Assist - Lane Assist Plus - Traffic Sign Recognition - Predictive Speed Control for ACC)
- Seats: Electrically adjustable driver's seat with memory function (CUPRA sports bucket seats in front - electrically adjustable lumbar support for driver's seat - exterior mirrors with memory function - winter package (heated front seats) - leather-look door trim)

### Brief expert findings

Documents submitted	At the time of the inspection, the vehicle registration certificate Part 2 (title) was available, but the vehicle registration certificate Part 1 (document) was not. (Copy)
VIN comparison	The vehicle identification number (VIN) was read from the vehicle and its conformity with the submitted documents was confirmed by the undersigned during the inspection.
Inspection	The inspection conditions were sufficient for the assessment of the vehicle. No lifting equipment or pit was available for inspecting the vehicle. Therefore, inspection of the vehicle's underside was only possible to a limited extent.
Test drive	No test drive/shunting maneuver was carried out during the inspection of the vehicle.
Engine function test	An engine test run was performed.
readiness to drive	The vehicle was roadworthy at the time of inspection.

### Value reducing factors

No.	Component group	Description
1	2nd wheel set	1 alloy rim - Scratch(es) - Loss in value
2	Side panel - rear right side	Wheel well extension - Scratch(es) - Paint
3	Door - rear left side	Brightware - lower - Scratch(es) - Replace
4	Front bumper	Cover bumper - front - Scratched - Replace
5	Front bumper	Front bumper - Broken / torn - Replace

### Wear and tear

No.	Component group	Description
1	Door - front left side	Brightware - lower - Scratch(es) - No deduction

The vehicle shows signs of wear and tear commensurate with its age and use.

### Missing parts

#### Description

Documents - Service book (Digitaler Ausdruck)



## Order/Scope of Order

An order was placed to prepare a sales report for the described vehicle. This report includes the following:

- Description of key vehicle information
- Documentation of equipment features  
*(Delivery by third-party service providers)*
- Documentation of damage, defects, missing parts
- Documentation of prior damage, unrepaired prior damage, repainting
- A brief visual or functional inspection of the equipment details, if possible.  
*(Functional testing of driver assistance systems is not included in the scope of services!)*
- a photographic documentation of the vehicle

## Basis for the order

This product is based on the guidelines for vehicle returns and valuations published by Alphabet Fleet GmbH. The expert makes the specific findings in each individual case objectively, within the framework of the prescribed standards, based on their own expertise.

The vehicle inspection takes place in a fully assembled, unassembled state.

Damage or defects that can only be detected during disassembly/diagnostic work or through further investigation remain within the realm of prognostic risk. An increased risk exists due to concealed defects caused by fraudulent misrepresentation and which were not identifiable by the expert.

Damage or defects resulting from normal use or wear and tear of the vehicle will be accepted in accordance with the applicable standard.

There was no explicit identification or monetary consideration of the expected features within the product.

Features which, in their nature and extent, slightly exceed normal use but do not constitute unacceptable damage, will be documented and indicated as signs of wear, if applicable.

Damage or defects that, according to the applicable standard, can no longer be attributed to normal use or wear and tear are listed under "Value Reducing Factors" in the product description.

Depending on the product specification, a monetary ID can be provided. If this takes place, the costs can be 100% or pro rata depending on the vehicle's age and mileage.

## Previous damages

No apparent prior damage that had been repaired could be found on the vehicle.

## Comments

-Der montierte Winterradsatz ist kein Bestandteil des Auslieferungsumfangs.



Figure 1: Diagonal front (left)



Figure 2: Diagonal front (right)



Figure 3: Diagonal rear (left)



Figure 4: Diagonal rear (right)



Figure 5: Interior - front



Figure 6: Interior - rear



Figure 7: Instrument cluster



Figure 8: Instrument panel



Figure 9: Interior 360° view



Figure 10: Cargo area



Figure 11: VIN



Figure 12: Mounted tyres



Figure 13: Documents



Figure 14: Documents



Figure 15: Documents



Figure 16: Additional tyres



Figure 17: Navigation

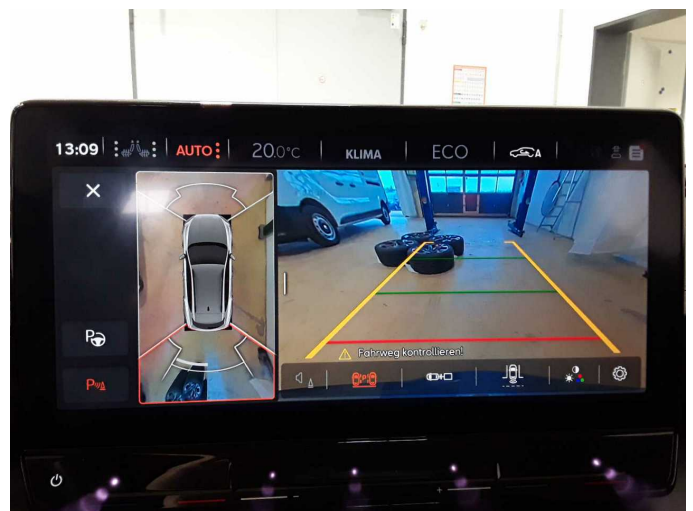


Figure 18: Misc.



Figure 19: Misc.



Figure 20: Misc.



Figure 21: Misc.



Figure 22: Misc.



Figure 23: Misc.



Figure 24: Misc.



Figure 25: Misc.



Figure 26: Misc.

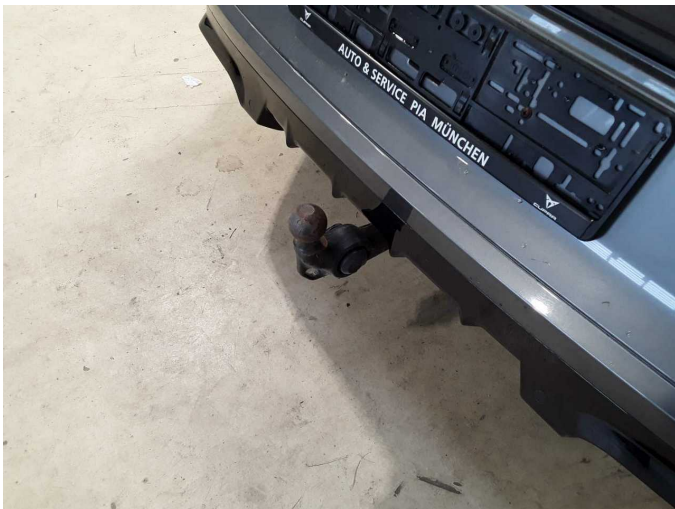


Figure 27: Misc.



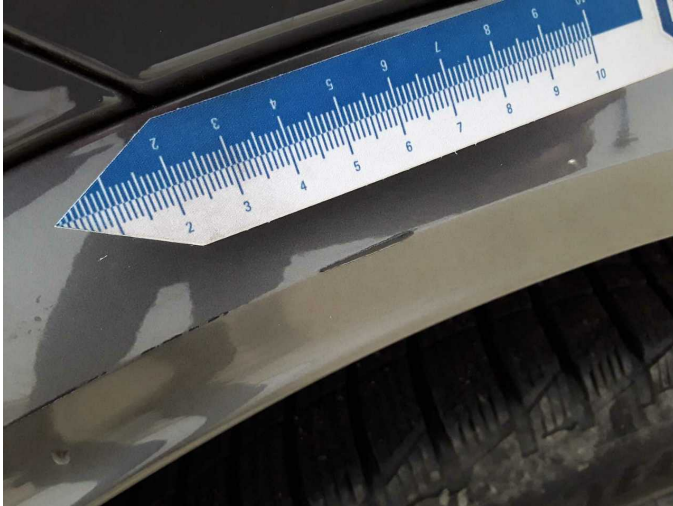
Damage 1: 2nd wheel set: 1 alloy rim - Scratch(es) - Loss in value



Damage 1: 2nd wheel set: 1 alloy rim - Scratch(es) - Loss in value



Damage 2: Side panel - rear right side: Wheel well extension - Scratch(es) - Paint



**Damage 2:** Side panel - rear right side: Wheel well extension - Scratch(es) - Paint



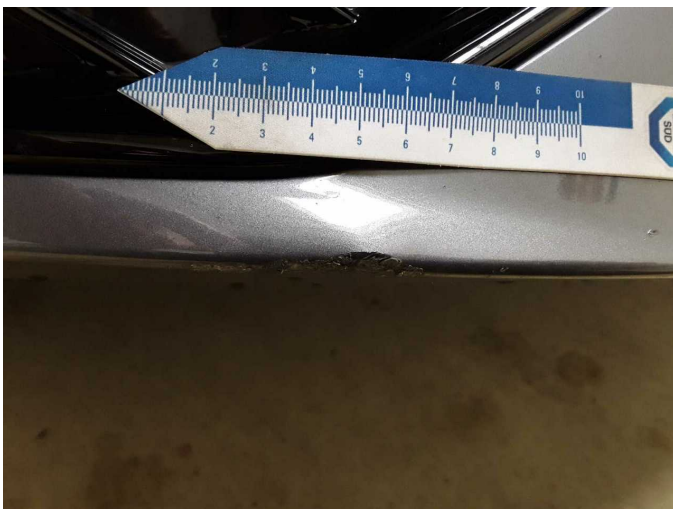
**Damage 3:** Door - rear left side: Brightware - lower - Scratch(es) - Replace



**Damage 3:** Door - rear left side: Brightware - lower - Scratch(es) - Replace



**Damage 4:** Front bumper: Cover bumper - front - Scratched - Replace



**Damage 4:** Front bumper: Cover bumper - front - Scratched - Replace



**Damage 4:** Front bumper: Cover bumper - front - Scratched - Replace



**Damage 5:** Front bumper: Front bumper - Broken / torn - Replace



**Damage 5:** Front bumper: Front bumper - Broken / torn - Replace



# Wartungshistorie

(gemäß Auftraggeber Informationen)

Fahrgestellnummer: VSSZZZKM7PR038282

Hersteller / Modell: SEAT SEAT Formentor VZ 1.4 e-Hybrid DSG

Datum	KM-Stand	Beschreibung
10.02.2026	53.934	AU; Wartung Sonstiges
17.10.2025	49.253	Bremsflüssigkeit; Bremsflüssigkeit ern; Motoröl b. Wartung; Ölfilter ern; Ölwechsel; Wartung Sonstiges
22.08.2024	30.608	Motoröl b. Wartung; Ölfilter ern; Regelwartungsdienst; Wartung Sonstiges
13.10.2023	15.373	Motoröl b. Wartung; Ölfilter ern; Ölwechsel; Wartung Sonstiges