

Expertise

Protocol number: 45519347
Order No. / Reference: 26382941
Inspection date: 13 May 2026

Manufacturer: Opel

Model: Astra Sports Tourer 1.5 D Automatik Business Edition

VIN: VXKFCYHZTP1084459



Vehicle details

Manufacturer / Type / Model / Equipment

Opel Astra Sports Tourer 1.5 D Automatik Business Edition

Vehicle Identification number VXKFCYHZTP1084459

Mileage (Read) 104,300 km

First registration 24 Jan 2024

Number of holders 1

Power / Engine displacement 96 kw / 1,499 ccm

Fuel type / Cylinder Diesel / 4

Gearbox / Number of gears Automatic / 8

Type of drive Front drive

Type of vehicle Station wagon

Colour / colour code Karbon Schwarz Metallic

Doors / Seats 5 / 5

Upholstery type Cloth

Colour of upholstery Black-Anthracite



Vehicle details

Maintenance booklet / proof	digital proof / complete	Next maintenance in	9 Monat(e)
Last service on / at	01/2026 at 94,572 km		
Key is / should be	2 / 2	FZG documents	ZB#2 (B) was available (copy), ZB#1 (S) was not available.
		Letter No.	HB396021
Previous damage / Accident	None detectable	Repainting	None detectable
Inspection conditions	sufficient	Lifting equipment / pit	yes
Test drive	Not performed	Engine function test	Performed
Manufacturer key number/ type code number	1889 / AEY 00089		
Emission standard	EURO6;WLTP;AP;PI/CI; M, N1 I	fine dust sticker	
Permitted total weight	1,980 kg	Empty weight	

Tyres

Mounted tyres

#	Tyre size	Type of tyre	Manufacturer	Tread depth
1)	205/55 R16 91H	Winter tyres on Steel rim with wheel cover	Continental	2mm / 2mm
2)	205/55 R16 91H	Winter tyres on Steel rim with wheel cover	Continental	5mm / 5mm

Additional tyres

#	Tyre size	Type of tyre	Manufacturer	Tread depth
1)	205/55 R16 94V	Summer tyres on Light alloy	Michelin	3mm / 3mm
2)	205/55 R16 94V	Summer tyres on Light alloy	Michelin	4mm / 4mm

Replacement

Typ	Tyre size	Type of tyre	Manufacturer	Tread depth
	Tirefit	Expiration date 07/2028		

Legend: Tread depth information for the left tire is listed first, for the right tire it is listed second on the axle in the direction of travel.



Equipment

Standard equipment

- Storage compartments
- Airbag: Front airbags, driver and front passenger
- Airbag: Front and rear outer head airbags
- Automatic activation of the hazard warning lights
- Exterior mirror housings in black
- Hill Start Assist
- third brake light
- Diesel particulate filter (DPF) maintenance-free
- Electronic brake force distribution (EBD)
- Electric windows front and rear
- Transmission: 8-speed automatic transmission
- rear window wiper
- automatic climate control
- Paintwork: Roof in car color
- LED headlights
- Steering wheel heating
- Illuminated makeup mirrors in both sun visors
- Multimedia infotainment system
- Opel Vizor with frame in high-gloss black
- Tire repair kit
- Wheels: Alloy wheels 7 J x 16 (5 double spokes) in silver
- Rear seat backrest folds forward in a 40:20:40 split
- Seat belts: Three-point seat belts in all seats
- Heated seats, driver and passenger
- Start/Stop System
- Pre-wiring for ISOFIX child seat mounting system
- Central locking with remote control

Extra equipment

- Paint finish: Metallic

- Airbag: Chest-pelvis-side airbags, driver and front passenger
- Anti-lock braking system (ABS)
- Exterior mirrors, electrically adjustable, heated and manually foldable
- On-board computer
- Roof design line, in black
- Tachometer
- Electronic Stability Program (ESP) and Traction Control with engine and brake intervention (TCPlus)
- Back window, heater
- Wiring harness for trailer hitch
- Front headrests and 3 rear headrests, height adjustable
- LED interior lighting
- Steering wheel: Leather steering wheel, flattened, perforated, with steering wheel remote control and paddle shifters
- Fog light
- Electric parking brake
- Tire pressure monitoring system
- 180-degree reversing camera
- Keyless Start system
- Seats: Ergonomic active driver's seat, Modene fabric
- Solar Protect thermal insulation glazing
- 12V power outlet in the center console
- Electronic immobilizer

- Navigation system (Multimedia infotainment system with 10" color touchscreen display and 10" driver information display; navigation system with integrated memory; 3D map display for Europe and Russia; dynamic route guidance via map and/or arrow display and voice prompts; TomTom Online Traffic; online POI search and route guidance; parking information; fuel price information; live weather; over-the-air map updates; intelligent voice control; "Hey Opel" shortcut button; 6 functions; active route suggestions)

Brief expert findings

Documents submitted	At the time of the inspection, the vehicle registration certificate Part 2 (title) was available, but the vehicle registration certificate Part 1 (document) was not. (Copy)
VIN comparison	The vehicle identification number (VIN) was read from the vehicle and its conformity with the submitted documents was confirmed by the undersigned during the inspection.
Inspection	The inspection conditions were sufficient for the assessment of the vehicle. Lifting equipment and/or a pit were available for examining the vehicle.
Test drive	No test drive/shunting maneuver was carried out during the inspection of the vehicle.
Engine function test	An engine test run was performed.



Value reducing factors

No.	Component group	Description
1	Trim / covers	Floor mats - Damaged - Replace
2	2nd wheel set	1 alloy rim - Scratch(es) - Loss in value
3	Engine	Engine - Leaking - Diagnosed and repair if necessary
4	Door - rear right side	Door - Scratch(es) - Paint
5	Rear bumper	Rear bumper - Scratch(es) - Paint
6	Front bumper	Front bumper - Scratch(es) - Paint

Wear and tear

No.	Component group	Description
1	Bonnet	Bonnet - Stone chips - No deduction
2	Vehicle glazing	Windscreen - Stone chips - No deduction
3	Trim / covers	Boot lid - interior trim - Scratch(es) - No deduction

The vehicle shows signs of wear and tear commensurate with its age and use.

Order/Scope of Order

An order was placed to prepare a sales report for the described vehicle. This report includes the following:

- Description of key vehicle information
- Documentation of equipment features
(*Delivery by third-party service providers*)
- Documentation of damage, defects, missing parts
- Documentation of prior damage, unrepaired prior damage, repainting
- A brief visual or functional inspection of the equipment details, if possible.
(*Functional testing of driver assistance systems is not included in the scope of services!*)
- a photographic documentation of the vehicle

Basis for the order

This product is based on the guidelines for vehicle returns and valuations published by Alphabet Fleet GmbH. The expert makes the specific findings in each individual case objectively, within the framework of the prescribed standards, based on their own expertise.

The vehicle inspection takes place in a fully assembled, unassembled state.

Damage or defects that can only be detected during disassembly/diagnostic work or through further investigation remain within the realm of prognostic risk. An increased risk exists due to concealed defects caused by fraudulent misrepresentation and which were not identifiable by the expert.

Damage or defects resulting from normal use or wear and tear of the vehicle will be accepted in accordance with the applicable standard.

There was no explicit identification or monetary consideration of the expected features within the product.

Features which, in their nature and extent, slightly exceed normal use but do not constitute unacceptable damage, will be documented and indicated as signs of wear, if applicable.

Damage or defects that, according to the applicable standard, can no longer be attributed to normal use or wear and tear are listed under "Value Reducing Factors" in the product description.

Depending on the product specification, a monetary ID can be provided. If this takes place, the costs can be 100% d or pro rata depending on the vehicle's age and mileage.

Previous damages

No apparent prior damage that had been repaired could be found on the vehicle.



Comments

Der montierte Winterradsatz ist kein Bestandteil der Ausstattung.



Figure 1: Diagonal front (left)



Figure 2: Diagonal front (right)



Figure 3: Diagonal rear (left)



Figure 4: Diagonal rear (right)



Figure 5: Interior - front



Figure 6: Interior - rear

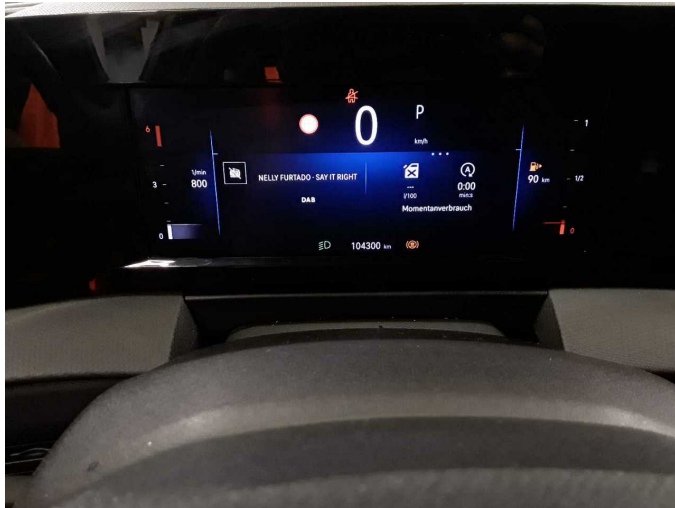


Figure 7: Instrument cluster



Figure 8: Instrument panel



Figure 9: Interior 360° view



Figure 10: Cargo area



Figure 11: VIN



Figure 12: Mounted tyres



Figure 19: Misc.



Figure 20: Misc.



Figure 21: Misc.



Figure 22: Misc.

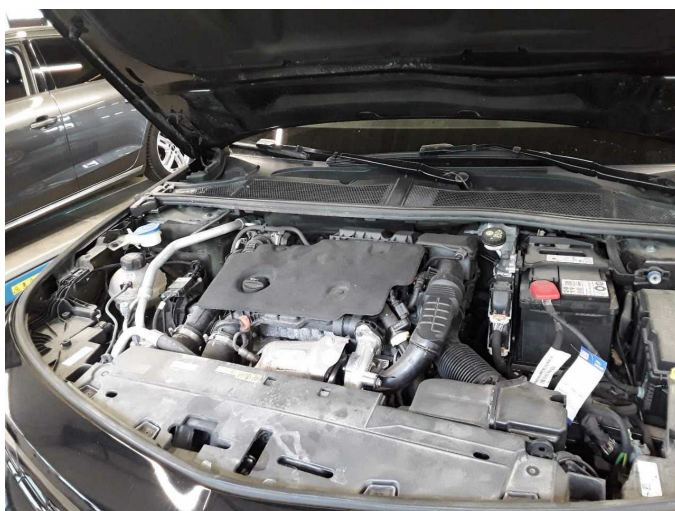


Figure 23: Misc.



Figure 24: Misc.



Figure 25: Misc.

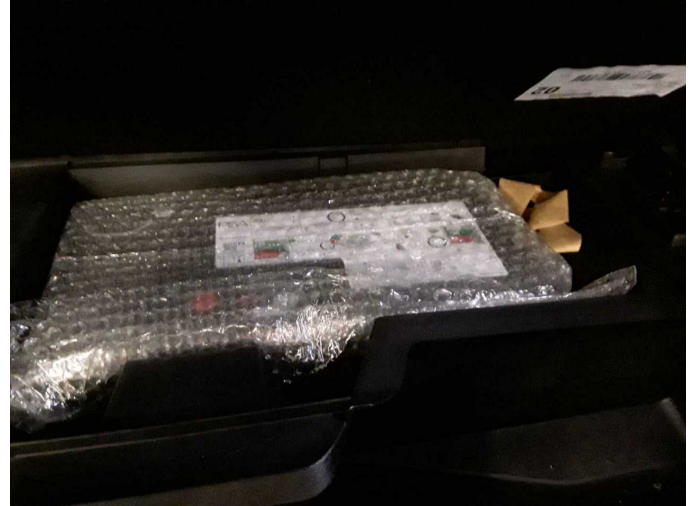
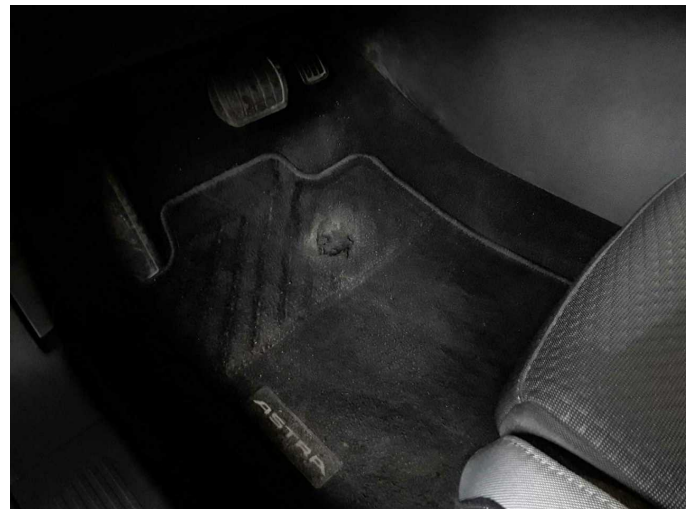


Figure 26: Misc.



Figure 27: Misc.



Damage 1: Trim / covers: Floor mats - Damaged - Replace



Damage 2: 2nd wheel set: 1 alloy rim - Scratch(es) - Loss in value



Damage 2: 2nd wheel set: 1 alloy rim - Scratch(es) - Loss in value



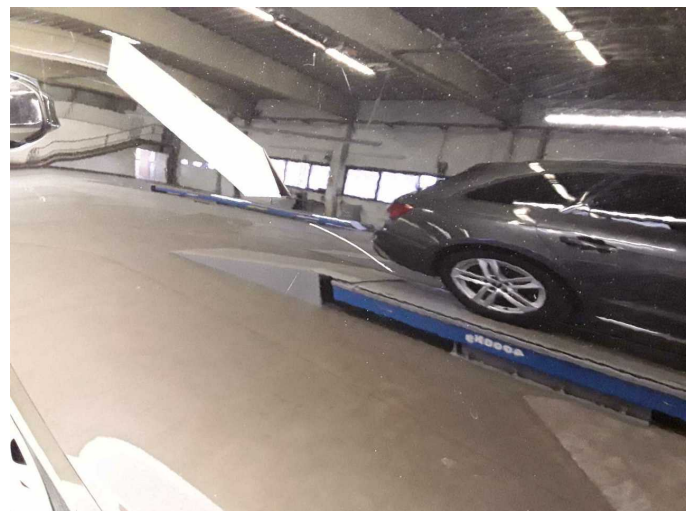
Damage 2: 2nd wheel set: 1 alloy rim - Scratch(es) - Loss in value



Damage 3: Engine: Engine - Leaking - Diagnosed and repair if necessary



Damage 4: Door - rear right side: Door - Scratch(es) - Paint



Damage 4: Door - rear right side: Door - Scratch(es) - Paint



Damage 5: Rear bumper: Rear bumper - Scratch(es) - Paint



Damage 5: Rear bumper: Rear bumper - Scratch(es) - Paint



Damage 5: Rear bumper: Rear bumper - Scratch(es) - Paint



Damage 5: Rear bumper: Rear bumper - Scratch(es) - Paint



Damage 6: Front bumper: Front bumper - Scratch(es) - Paint



Damage 6: Front bumper: Front bumper - Scratch(es) - Paint



Damage 6: Front bumper: Front bumper - Scratch(es) - Paint



Damage 6: Front bumper: Front bumper - Scratch(es) - Paint



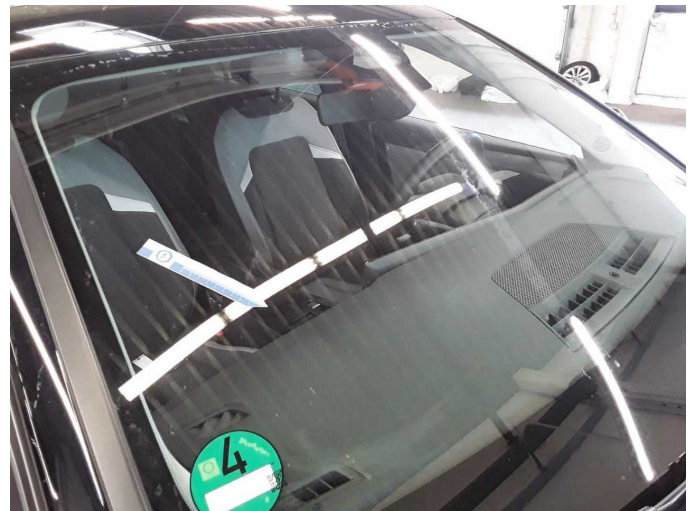
Wear and tear 1: Bonnet: Bonnet - Stone chips - No deduction



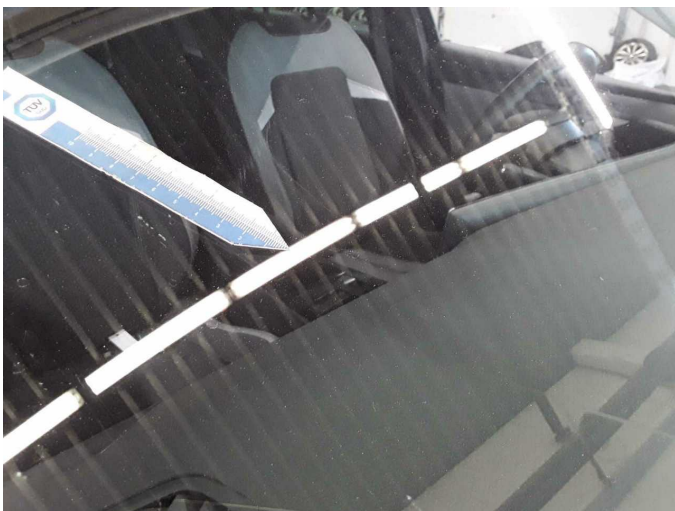
Wear and tear 1: Bonnet: Bonnet - Stone chips - No deduction



Wear and tear 1: Bonnet: Bonnet - Stone chips - No deduction



Wear and tear 2: Vehicle glazing: Windscreen - Stone chips - No deduction



Wear and tear 2: Vehicle glazing: Windscreen - Stone chips - No deduction



Wear and tear 3: Trim / covers: Boot lid - interior trim - Scratch(es) - No deduction



Wear and tear 3: Trim / covers: Boot lid - interior trim - Scratch(es) - No deduction



Wartungshistorie

(gemäß Auftraggeber Informationen)

Fahrgestellnummer: VXXFCYHZTP1084459

Hersteller / Modell: OPEL OPEL Astra Sports Tourer 1.5 D Automatik Business Edition

Datum	KM-Stand	Beschreibung
28.01.2026	94.572	Bremsflüssigkeit; Bremsflüssigkeit ern; Motoröl b. Wartung; Ölfilter ern; Regelwartungsdienst; Wartung Sonstiges
25.08.2025	74.749	Motoröl b. Wartung; Ölfilter ern; Ölwechsel; Wartung Sonstiges
06.05.2025	57.032	Kraftstofffilter ern; Luftfiltereinsatz ern; Motoröl b. Wartung; Ölfilter ern; Regelwartungsdienst; Wartung Sonstiges
12.07.2024	19.901	Motoröl b. Wartung; Ölfilter ern; Regelwartungsdienst; Wartung Sonstiges