

Expertise

Protocol number: 46018559
Order No. / Reference: 26464744
Inspection date: 16 Jun 2026

Manufacturer: Ford

Model: Focus Turnier 1.0 EcoBoost Hybrid ACTIVE X

VIN: WF0PXXGCHPNS42768



Vehicle details

Manufacturer / Type / Model / Equipment

Ford Focus Turnier 1.0 EcoBoost Hybrid ACTIVE X

Vehicle Identification number WF0PXXGCHPNS42768

Mileage (Read) 72,056 km

First registration 28 Nov 2022

Number of holders 2

Power / Engine displacement 92 kw / 999 ccm

Fuel type / Cylinder Hybrid Petrol / E / 3

Gearbox / Number of gears Manual / 6

Type of drive Front drive

Type of vehicle Station wagon

Colour / colour code Magnetic-Grau (Metallic)

Doors / Seats 5 / 5

Upholstery type Cloth

Colour of upholstery Anthracite-Grey



Vehicle details

Maintenance booklet / proof	digital proof / complete	Next maintenance in	63 %
Last service on / at	11/2025 at 60,879 km		
Key is / should be	2 / 2	FZG documents	ZB#2 (B) was available (copy), ZB#1 (S) was not available.
		Letter No.	GK809660
Previous damage / Accident	None detectable	Repainting	Detectable
Inspection conditions	sufficient	Lifting equipment / pit	No
Test drive	Not performed	Engine function test	Performed
Manufacturer key number/ type code number	8566 / BUC 00126		
Emission standard	EURO6;WLTP;AP;PI/CI; M, N1 I	fine dust sticker	
Permitted total weight	1,970 kg	Empty weight	

Tyres

Mounted tyres

#	Tyre size	Type of tyre	Manufacturer	Tread depth
1)	215/55 R17 98W	Summer tyres on Light alloy	Bridgestone	7mm / 7mm
2)	215/55 R17 98W	Summer tyres on Light alloy	Bridgestone	7mm / 7mm

Additional tyres

#	Tyre size	Type of tyre	Manufacturer	Tread depth
1)	205/60 R16 92H	Winter tyres on Light alloy	Fulda	9mm / 9mm
2)	205/60 R16 92H	Winter tyres on Light alloy	Fulda	9mm / 9mm

Legend: Tread depth information for the left tire is listed first, for the right tire it is listed second on the axle in the direction of travel.



Equipment

Standard equipment

- Airbag: Passenger airbag deactivation
- Anti-lock braking system (ABS) with electronic brake force distribution (EBD)
- Attachment points behind the second row of seats for mounting the safety partition net
- Crossover body kit
- Roof rails, black
- Digital instrument panel 12.3" (31.2 cm screen diagonal)
- Electronic Safety and Stability Program (ESP)
- Chassis with increased ground clearance
- Electronic parking brake
- FordPass Connect including live traffic information
- Luggage compartment lighting
- Cruise control
- Illuminated glove compartment
- rear window wiper
- Interior mirror, automatically dimming
- Isofix bracket
- Knee pads on the center console
- Paint finish: Solid
- LED headlights
- Adjustable steering column
- Armrest - centre, rear
- MyKey key system (individually programmable second key)
- Otto particulate filter
- Front and rear parking pilot system
- Post-Collision Assist
- Tire repair kit
- Rear view camera
- Windscreen wipers with rain sensor (sensitivity adjustable)
- Headlight assistant with day/night sensor
- Selective driving mode switch (Active)
- Electromechanical speed-dependent power steering
- Seats: Driver's seat height adjustable
- Seats: Rear seat backrest
- Seats: Front sports seats with enhanced lateral support
- 12-volt power outlet in the luggage compartment
- Carpet floor mats front and rear, velour
- 2 USB ports in the center console, rear
- Lashing eyes in the luggage compartment
- Electronic immobilizer
- Central locking with remote control and remote luggage compartment release
- Ambient lighting, front
- Exterior mirrors painted in body color, electrically adjustable, heated and foldable
- Tires: 7 J x 17 alloy wheels (4) with 215/55 R 17 tires
- Hill start assist
- Fabric headliner
- Roof spoiler painted in car color
- Tachometer
- Lane keeping assist including lane keeping assist
- Electric windows front and rear
- FordKeyFree system including Ford Power start function
- Luggage compartment cover
- Speed limiter
- Transmission: 6-speed manual transmission
- Back window, heater
- Interior lighting with LED technology
- Intelligent security system
- Air conditioning with automatic temperature control
- Headrests: 2 front and 3 rear, height adjustable
- LED taillights
- Steering wheel: 3-spoke design
- Make-up mirrors in driver and passenger sun visors
- Center console "Premium" front
- Navigation: Ford SYNC 4 including Ford navigation system with AppLink, 13.2" touchscreen and DAB/DAB+
- Upholstery: Cloth
- Pre-Collision Assist
- Tire Pressure Monitoring System (TMPS)
- Gear knob, Sensico in leather look
- Headlight low beam
- Side windows from the 2nd row of seats and rear window, dark tinted.
- Seats: Passenger seat, 2-way adjustable
- Seats: Map grid on the driver's and front passenger's seat backrests
- Start-stop system
- Phone accessories: Inductive charging station for mobile devices
- Variable radiator air intake
- Warning system for unfastened seat belts for the 1st and 2nd rows of seats



Extra equipment

- Package: Easy Parking (Active Parking Assist with parking and exiting function (in conjunction with 8-speed automatic transmission including semi-automated vehicle guidance) - Door edge protection - Rearview camera with "Split View" technology)
- Package: Family Package III (Tournament)
- Package: Winter (heated windscreen - heated steering wheel - individually and variably heated front seats)
- Panoramic sliding sunroof, electric (roof console with glasses storage compartment - illuminated make-up mirror)
- Radio: B&O Sound System (675 Watt premium sound system with 10 speakers, including subwoofer - based on the renowned sound and design expertise of Bang & Olufsen)
- Towbar preparation kit (including trailer stabilization function)
- Detachable towbar (including ESP trailer stabilization)
- eCall
- Package: Driver Assistance Package I (Intelligent cruise control, adaptive; traffic sign recognition system; wrong-way driver warning function; evasive steering assist; distance display and distance warning; driver drowsiness detection; high beam assist (in conjunction with adaptive LED matrix headlights with glare-free high beam assist); blind spot assist with cross traffic alert including emergency braking function (when reversing out of parking spaces) and trailer detection; reversing camera with split-view technology; electrically folding exterior mirrors with surround-view function.)
- Paint finish: Magnetic Metallic
- Tailgate, electric and sensor-controlled

Brief expert findings

Documents submitted	At the time of the inspection, the vehicle registration certificate Part 2 (title) was available, but the vehicle registration certificate Part 1 (document) was not. (Copy)
VIN comparison	The vehicle identification number (VIN) was read from the vehicle and its conformity with the submitted documents was confirmed by the undersigned during the inspection.
Inspection	The inspection conditions were sufficient for the assessment of the vehicle. No lifting equipment or pit was available for inspecting the vehicle. Therefore, inspection of the vehicle's underside was only possible to a limited extent.
Test drive	No test drive/shunting maneuver was carried out during the inspection of the vehicle.
Engine function test	An engine test run was performed.

Value reducing factors

No.	Component group	Description
1	Equipment	Tirefit filler - Expired - Replace
2	Wing mirror - left side	Cap - Scratch(es) - Smart repair
3	Bonnet	Bonnet - dent(s) - Smooth repair work
4	Body	C-pillar - right side - Dent / paintcoat damage - Smart repair
5	Body	C-pillar - left side - Scratch(es) - Smart repair
6	Sill - right side	Sill - Scratched - Smart repair
7	Side panel - rear left side	Side panel - Dent / paintcoat damage - Smart repair

Wear and tear

No.	Component group	Description
1	Vehicle glazing	Windscreen - Stone chips - No deduction
2	Front bumper	Front bumper - Stone chips - No deduction
3	Rear bumper	Rear bumper - Scratch(es) - No deduction

The vehicle shows signs of wear and tear commensurate with its age and use.

Repainting

No.	Repainting
1	Side panel - rear right side, Professionally carried out, Invoice of repair done Non-existent



Paint coat thickness measurement

Side panel - rear right side 237 µm |

Order/Scope of Order

An order was placed to prepare a sales report for the described vehicle. This report includes the following:

- Description of key vehicle information
- Documentation of equipment features
(Delivery by third-party service providers)
- Documentation of damage, defects, missing parts
- Documentation of prior damage, unrepaired prior damage, repainting
- A brief visual or functional inspection of the equipment details, if possible.
(Functional testing of driver assistance systems is not included in the scope of services!)
- a photographic documentation of the vehicle

Basis for the order

This product is based on the guidelines for vehicle returns and valuations published by Alphabet Fleet GmbH. The expert makes the specific findings in each individual case objectively, within the framework of the prescribed standards, based on their own expertise.

The vehicle inspection takes place in a fully assembled, unassembled state.

Damage or defects that can only be detected during disassembly/diagnostic work or through further investigation remain within the realm of prognostic risk. An increased risk exists due to concealed defects caused by fraudulent misrepresentation and which were not identifiable by the expert.

Damage or defects resulting from normal use or wear and tear of the vehicle will be accepted in accordance with the applicable standard.

There was no explicit identification or monetary consideration of the expected features within the product.

Features which, in their nature and extent, slightly exceed normal use but do not constitute unacceptable damage, will be documented and indicated as signs of wear, if applicable.

Damage or defects that, according to the applicable standard, can no longer be attributed to normal use or wear and tear are listed under "Value Reducing Factors" in the product description.

Depending on the product specification, a monetary ID can be provided. If this takes place, the costs can be 100% or pro rata depending on the vehicle's age and mileage.

Previous damages

No apparent prior damage that had been repaired could be found on the vehicle.



Figure 1: Diagonal front (left)



Figure 2: Diagonal front (right)



Figure 3: Diagonal rear (left)



Figure 4: Diagonal rear (right)



Figure 5: Interior - front



Figure 6: Interior - rear



Figure 7: Instrument cluster



Figure 8: Instrument panel



Figure 9: Interior 360° view



Figure 10: Cargo area



Figure 11: VIN



Figure 12: Mounted tyres



Figure 13: Documents



Figure 14: Documents



Figure 15: Additional tyres



Figure 16: Additional tyres

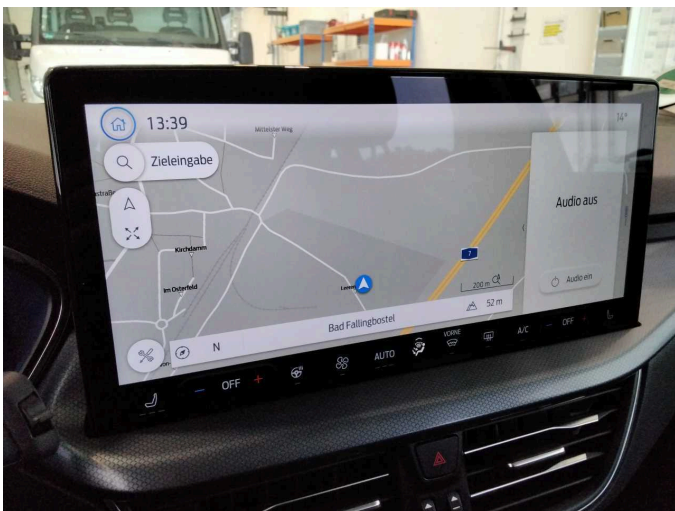


Figure 17: Navigation

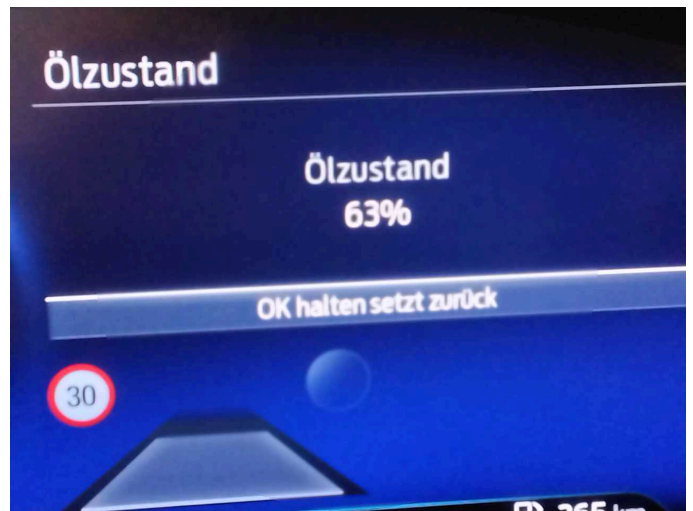


Figure 18: Misc.



Figure 19: Misc.



Figure 20: Misc.

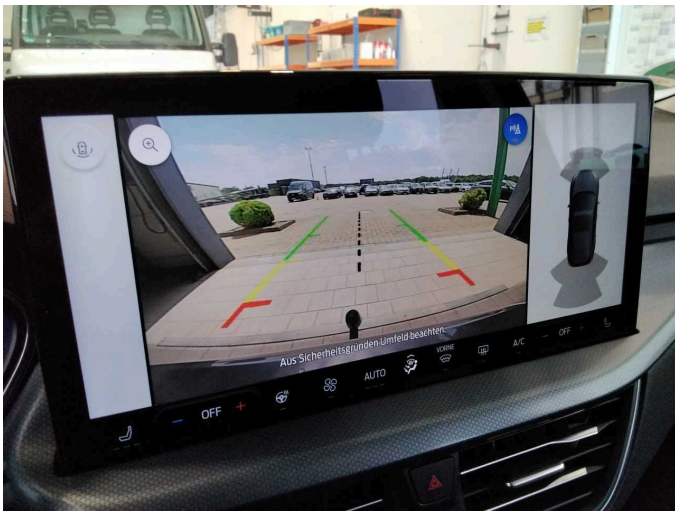


Figure 21: Misc.



Figure 22: Misc.



Figure 23: Misc.



Figure 24: Misc.



Figure 25: Misc.



Figure 26: Misc.

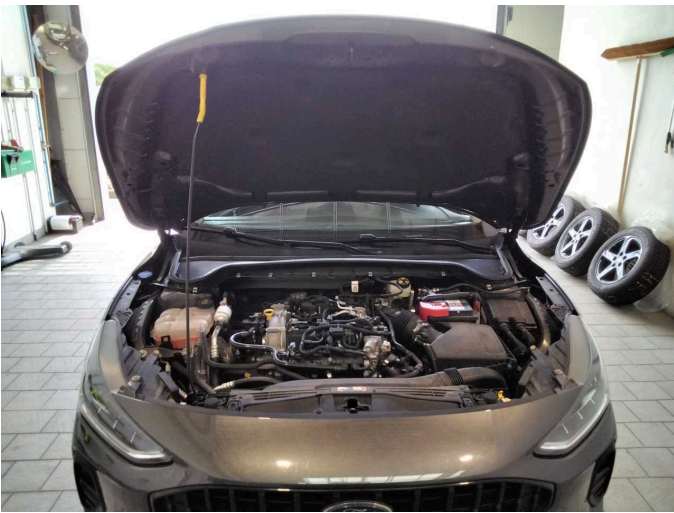


Figure 27: Misc.



Figure 28: Misc.



Figure 29: Misc.



Figure 30: Misc.



Damage 1: Equipment: Tirefit filler - Expired - Replace



Damage 2: Wing mirror - left side: Cap - Scratch(es) - Smart repair



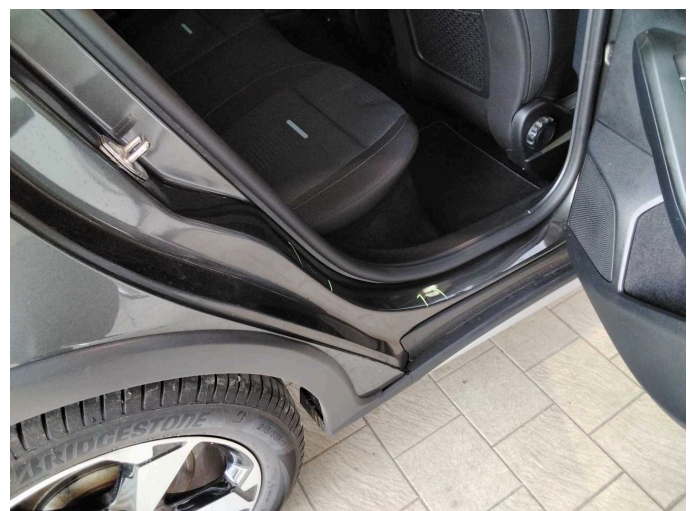
Damage 2: Wing mirror - left side: Cap - Scratch(es) - Smart repair



Damage 3: Bonnet: Bonnet - dent(s) - Smooth repair work



Damage 3: Bonnet: Bonnet - dent(s) - Smooth repair work



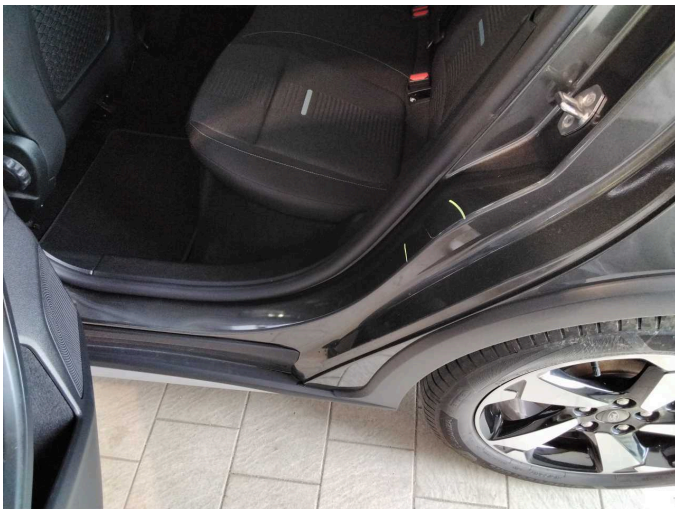
Damage 4: Body: C-pillar - right side - Dent / paintcoat damage - Smart repair



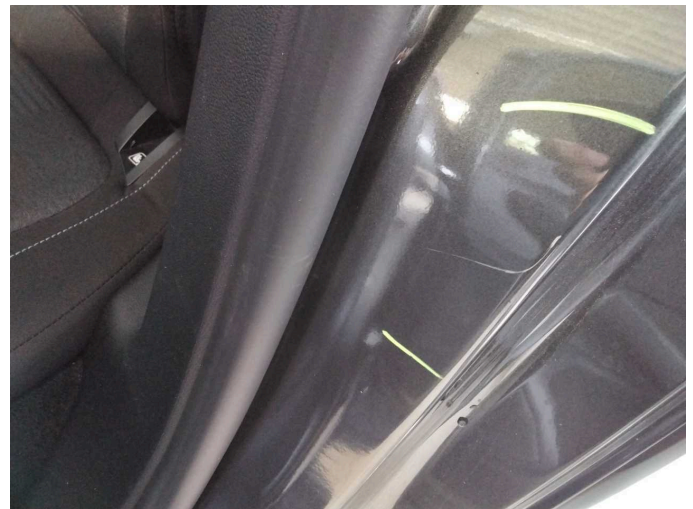
Damage 4: Body: C-pillar - right side - Dent / paintcoat damage - Smart repair



Damage 4: Body: C-pillar - right side - Dent / paintcoat damage - Smart repair



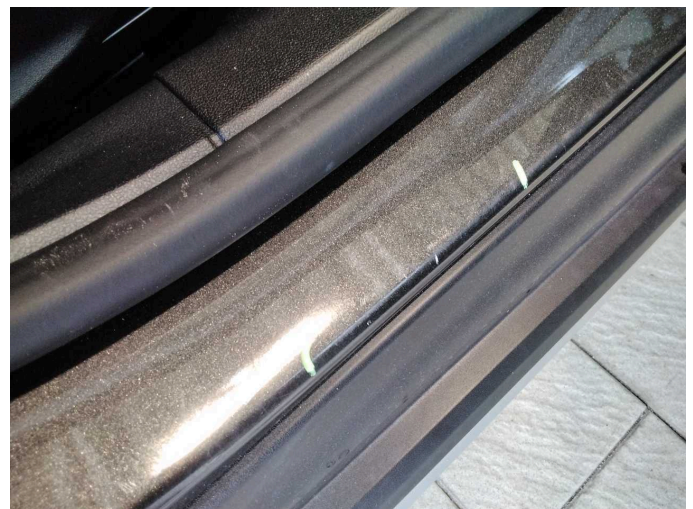
Damage 5: Body: C-pillar - left side - Scratch(es) - Smart repair



Damage 5: Body: C-pillar - left side - Scratch(es) - Smart repair



Damage 6: Sill - right side: Sill - Scratched - Smart repair



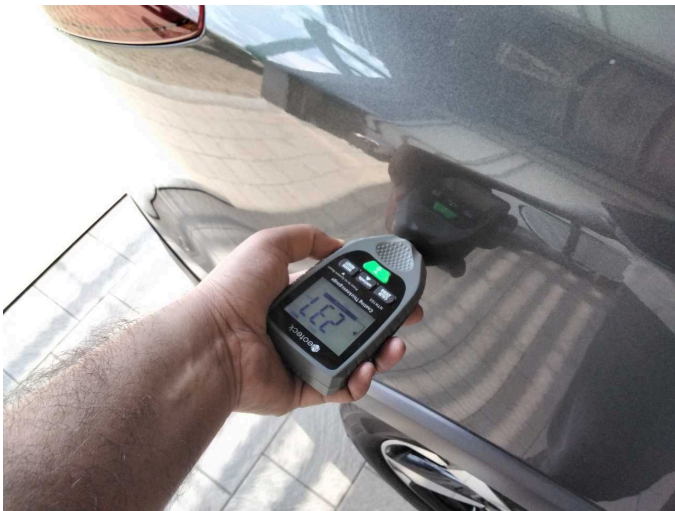
Damage 6: Sill - right side: Sill - Scratched - Smart repair



Damage 7: Side panel - rear left side: Side panel - Dent / paintcoat damage - Smart repair



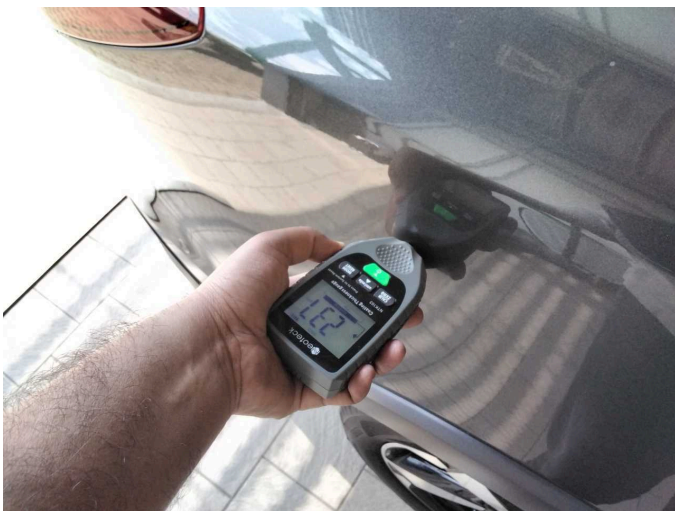
Damage 7: Side panel - rear left side: Side panel - Dent / paintcoat damage - Smart repair



Repainting 1: Side panel - rear right side



Repainting 1: Side panel - rear right side



Side panel - rear right side: 237 μm



Side panel - rear right side: 237 μm



Wartungshistorie

(gemäß Auftraggeber Informationen)

Fahrgestellnummer: WF0PXXGCHPNS42768

Hersteller / Modell: FORD FORD Focus Turnier 1.0 EcoBoost Hybrid ACTIVE X

Datum	KM-Stand	Beschreibung
21.11.2025	60.879	AU; Bremse Sonstiges; Bremsklötze hinten; Bremsklötze vorne; Bremsscheiben + Klötze h; Bremsscheiben + Klötze v; Bremsscheiben hinten; Bremsscheiben vorne; Luftfiltereinsatz ern; Motoröl b. Wartung; Ölfilter ern; Regelwartungsdienst; Wartung Sonstiges; Zündkerzen ern